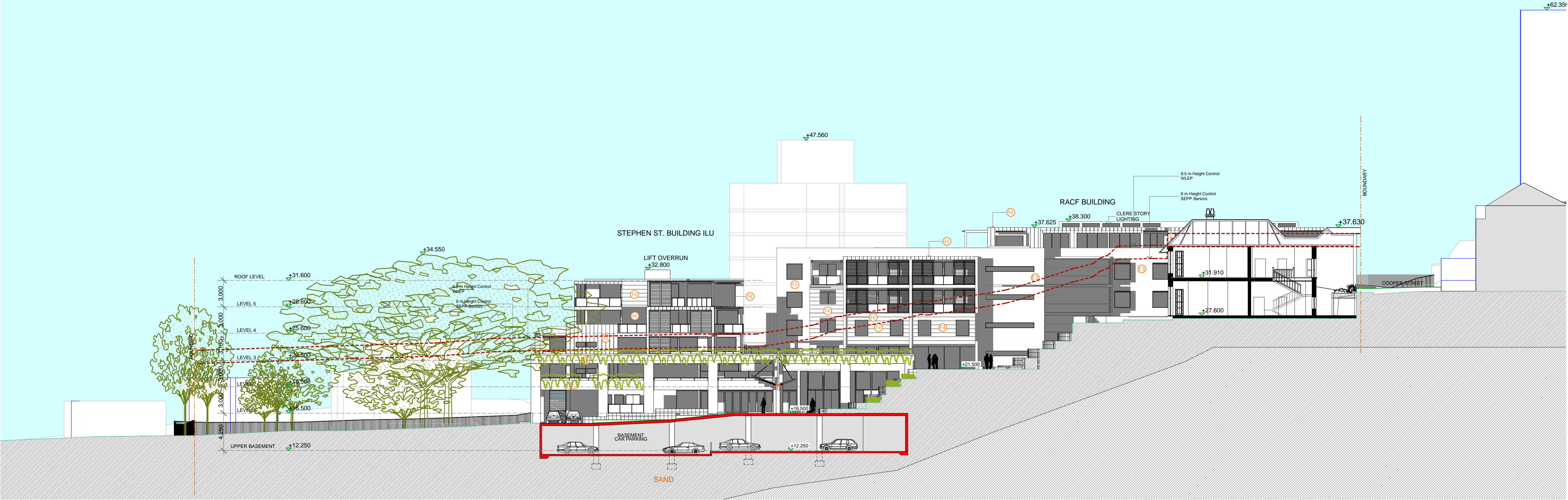


FOR MAJOR PROJECT APPLICATION ONLY



A Longitudinal Section1- Looking East
TECHNICAL SECTION

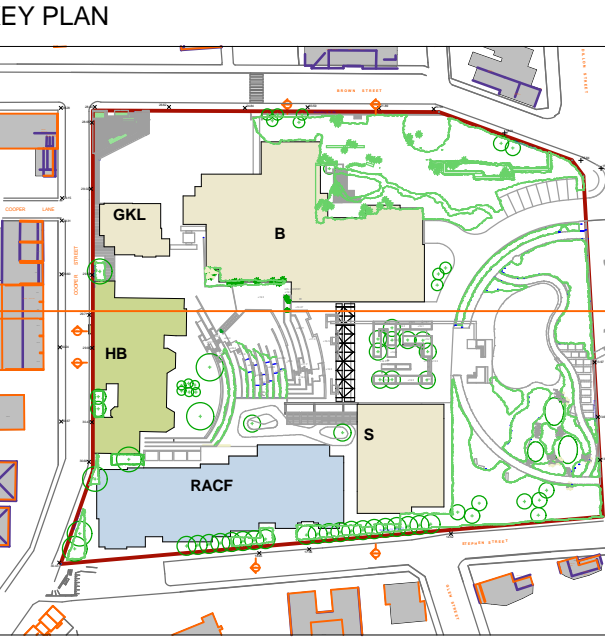
- EXTERNAL FINISHES LEGEND
- ① DRY PACK STONE WALL - THREDBO GREY COLOUR SANDSTONE
 - ② METAL CLADDING
 - ③ MASONRY WALL - BRICK 'JUTE SMOOTH'
 - ④ PROFILED ALUMINIUM BOARDING - REVERSE BRICK VENEER WALLS
 - ⑤ RENDER AND PAINTED
 - ⑥ WINDOW - ALUMINIUM FRAMED GLAZING
 - ⑦ BALUSTRADE - STAINLESS STEEL FRAMED GLASS INFILL BALUSTRADE
 - ⑧ VERTICAL SHADING LOUVRES - ALUMINIUM FRAMED WITH RECONSTITUTED TIMBER LOUVRES
 - ⑨ VERTICAL SHADING LOUVRES - GLASS LOUVRES
 - ⑩ HORIZONTAL SUNSCREEN - TIMBER POST & BEAM ON STEEL FRAME WITH ALUMINIUM BLADES / GRILL LOUVRES
 - ⑪ FRAMELESS GLASSCANOPY WALKWAY WITH TIMBER AND STEEL STRUCTURE
 - ⑫ ALUMINIUM LOUVRE WIDE BLADE SUNSCREEN
 - ⑬ HORIZONTAL TIMBER SUNSCREEN



RENDERED SECTION

Rev A 06/06/2011 New drawing

- BUILDING LEGEND
- HB HERITAGE BUILDING ILU
 - RACF RACF BUILDING
 - B BROWN STREET BUILDING ILU
 - S STEPHEN STREET BUILDING ILU
 - GKL GATE KEEPERS LODGE BUILDING ILU



OPTION B - RACF LOADING FACILITY

*Copyright JPR Architects Pty Ltd.
Reproduction of the whole or part of this documents constitutes an infringement of copyright. The information, ideas and concepts contained in this document are confidential and the recipient of this document is prohibited from disclosing such information, ideas and concepts to any person without the prior written consent of JPR Architects Pty Ltd.*

"THE TERRACES"
SCOTTISH HOSPITAL - 2 COOPER ST. PADDINGTON

PRINCIPAL ARCHITECT
jpr architects pty limited
20/50 Stanley Street East Sydney NSW 2010 tel +61 2 9366 1133 fax +61 2 9366 1166 email jpr@jpra.com.au

CONSULTING ARCHITECT: URBAN DESIGN
GMU GM Urban Design + Architecture Pty Ltd

CONSULTING ARCHITECT: AGED CARE
Flower and Samios
ARCHITECTS

CONSULTING ARCHITECT: HERITAGE
CM+ Conybear Morrison International Pty Ltd
Architecture Interiors Heritage Urban Design Masterplanning
T: 61 2 8244 8888 F: 61 2 8244 8877 E: mail@cmplus.com.au
© CM+ 2010

SCALE AT A1
1:250
DATE
06/06/2011
PROJECT No
2006067
REVISION
A
DRAWN
RM / YS / RK
ITEM No
39377

PROJECT ADDRESS
2 COOPER ST. PADDINGTON
CLIENT
Presbyterian Aged Care PADDINGTON

DRAWING TITLE
Longitudinal Section A - Option B
DRAWING No
DA 224

CAUTION: Drawings which have been scanned, saved in PDF format, and/or reprinted, other than by JPR, may not be to scale and should not be scaled or relied on for area calculations.
This design has had no input from relevant planning and services or BCA consultants and should not be construed as final

This file was generated with an evaluation version of the software. For more information, please visit: http://www.amyuni.com