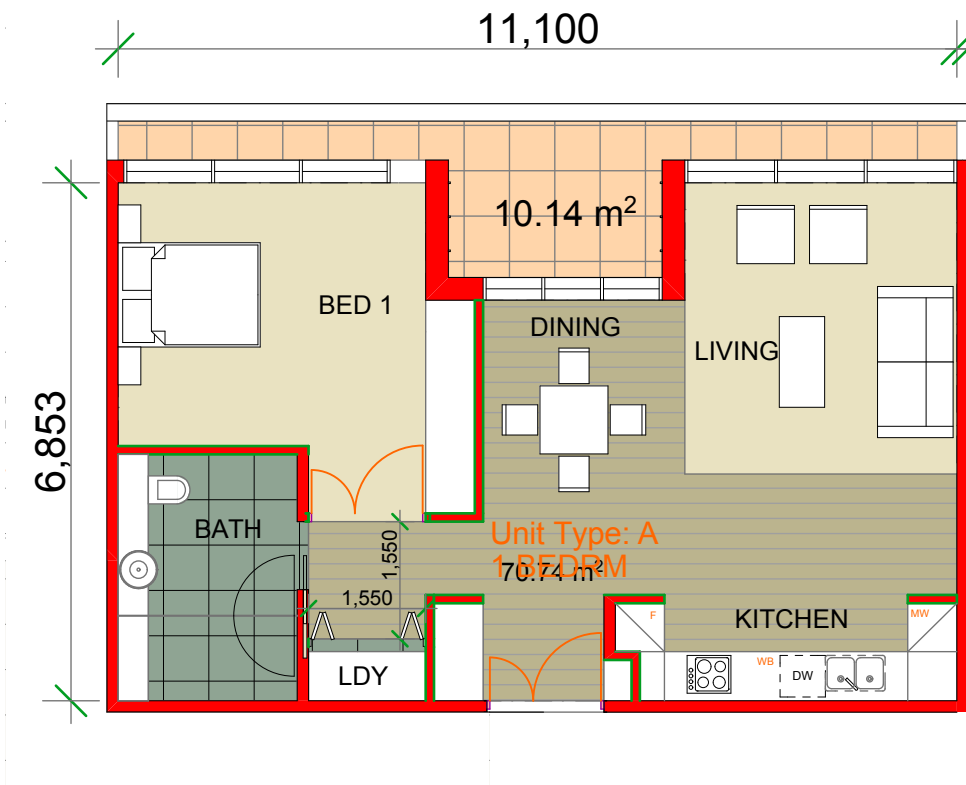
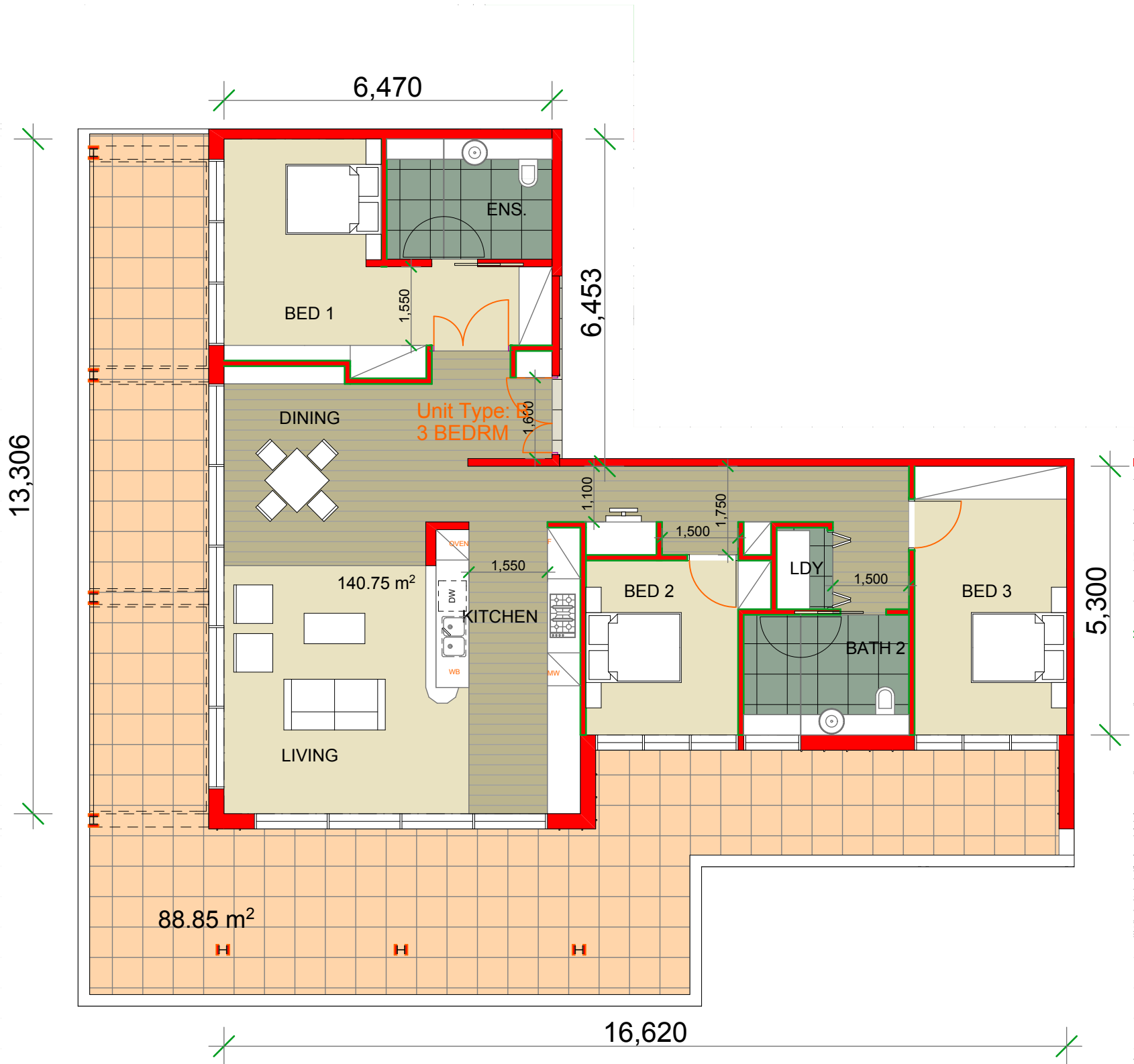


FOR MAJOR PROJECT APPLICATION ONLY



RACF ILU - UNIT TYPE A



RACF ILU - UNIT TYPE B

*Copyright JPR Architects Pty Ltd.
Reproduction of the whole or part of this documents constitutes an infringement of copyright. The information, ideas and concepts contained in this document are confidential and the recipient of this document is prohibited from disclosing such information, ideas and concepts to any person without the prior written consent of JPR Architects Pty Ltd.*

"THE TERRACES"
SCOTTISH HOSPITAL - 2 COOPER ST. PADDINGTON

PRINCIPAL ARCHITECT
j p r architects pty limited
20/50 Stanley Street East Sydney NSW 2010 tel +61 2 9366 1133 fax +61 2 9366 1166 email jpr@jpr.com.au

CONSULTING ARCHITECT: URBAN DESIGN
GMU GM Urban Design + Architecture Pty Ltd

CONSULTING ARCHITECT: AGED CARE
Flower and Samios architects

CONSULTING ARCHITECT: HERITAGE
CM+ Conybeare Morrison International Pty Ltd
Architecture Interiors Heritage Urban Design Masterplanning
T: 61 2 8244 8888 F: 61 2 8244 8877 E: mail@cmplus.com.au

SCALE AT A3
1:100
DATE
07/10/2010
PROJECT No
2006067
REVISION
A
DRAWN
RM / YS/ RK
ITEM No
38129

PROJECT ADDRESS
2 COOPER ST. PADDINGTON
CLIENT
Presbyterian Aged Care PADDINGTON

DRAWING TITLE
RACF ILU - Unit Plans - Sheet 1
DRAWING No
DA 465

CAUTION: Drawings which have been scanned, saved in PDF format, and/or reprinted, other than by JPR, may not be to scale and should not be scaled or relied on for area calculations.
This design has had no input from relevant planning and services or BCA consultants and should not be construed as final.
0 1 2m
TN
PROJECT NORTH