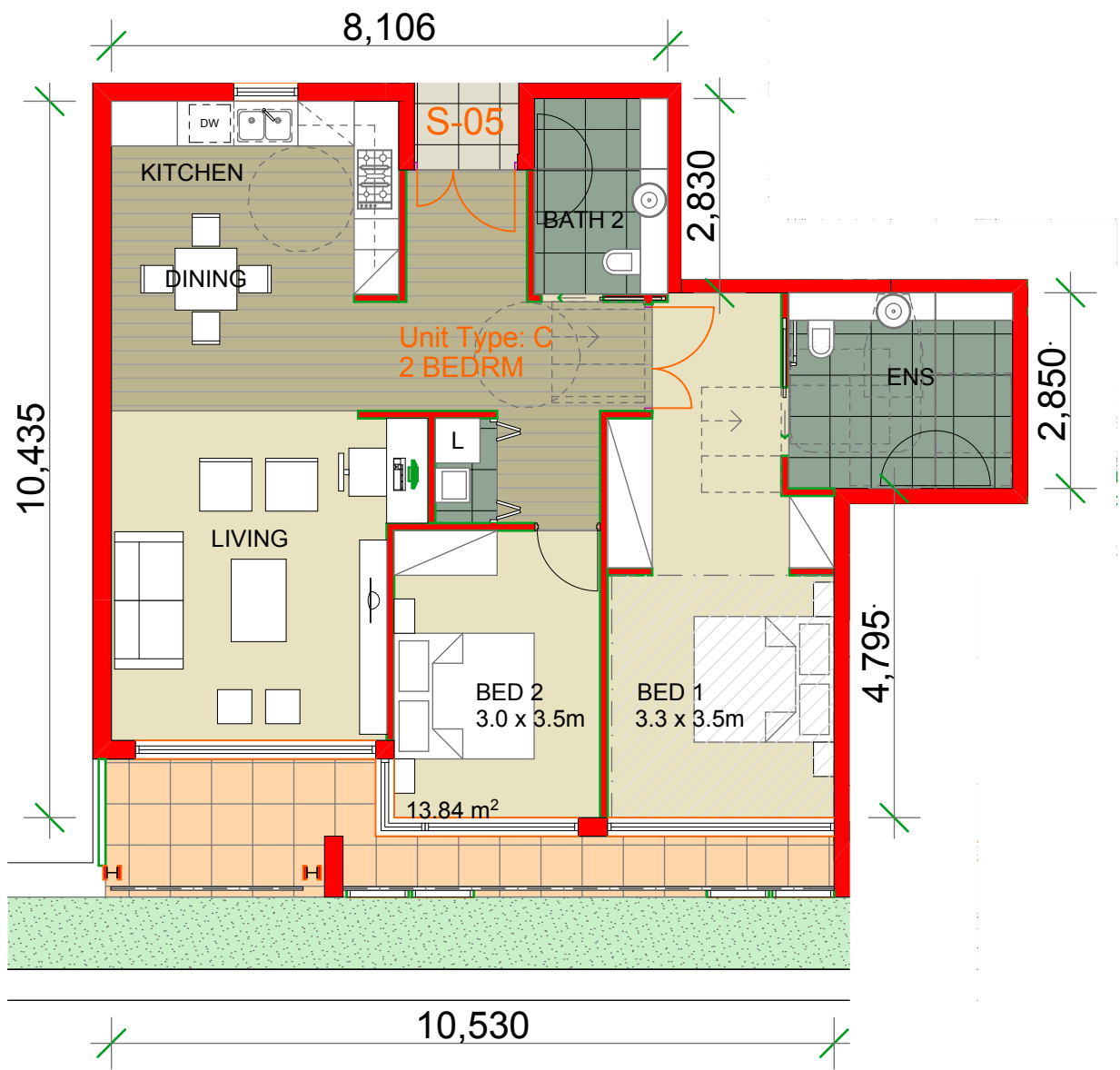


FOR MAJOR PROJECT APPLICATION ONLY



STEPHEN STREET - UNIT TYPE C



STEPHEN STREET - UNIT TYPE D

\*Copyright JPR Architects Pty Ltd.  
Reproduction of the whole or part of this document constitutes an infringement of copyright. The information, ideas and concepts contained in this document are confidential and the recipient of this document is prohibited from disclosing such information, ideas and concepts to any person without the prior written consent of JPR Architects Pty Ltd.\*

**"THE TERRACES"**  
SCOTTISH HOSPITAL - 2 COOPER ST. PADDINGTON

PRINCIPAL ARCHITECT  
**jpr architects pty limited**  
20/50 Stanley Street East Sydney NSW 2010 tel +61 2 9366 1133 fax +61 2 9366 1166 email jpr@jpr.com.au

CONSULTING ARCHITECT: URBAN DESIGN  
**GMU** GM Urban Design + Architecture Pty Ltd

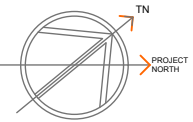
CONSULTING ARCHITECT: AGED CARE  
**Flower and Samios** architects

CONSULTING ARCHITECT: HERITAGE  
**CM+** Conybeare Morrison International Pty Ltd  
Architecture Interiors Heritage Urban Design Masterplanning  
T 61 2 8244 8888 F 61 2 8244 8877 E mail@cmplus.com.au

SCALE AT A3  
1:100  
REVISION  
**A**  
DATE  
07/10/2010  
PROJECT No  
2006067  
DRAWN  
RM / YS/ RK  
ITEM No  
37670

PROJECT ADDRESS  
2 COOPER ST. PADDINGTON  
CLIENT  
Presbyterian Aged Care PADDINGTON

DRAWING TITLE  
**Stephen St ILU - Unit Plans - Sheet 2**  
DRAWING No  
**DA 462**



CAUTION: Drawings which have been scanned, saved in PDF format, and/or reprinted, other than by JPR, may not be to scale and should not be relied on for area calculations.  
This design has had no input from relevant planning and services or BCA consultants and should not be construed as final.