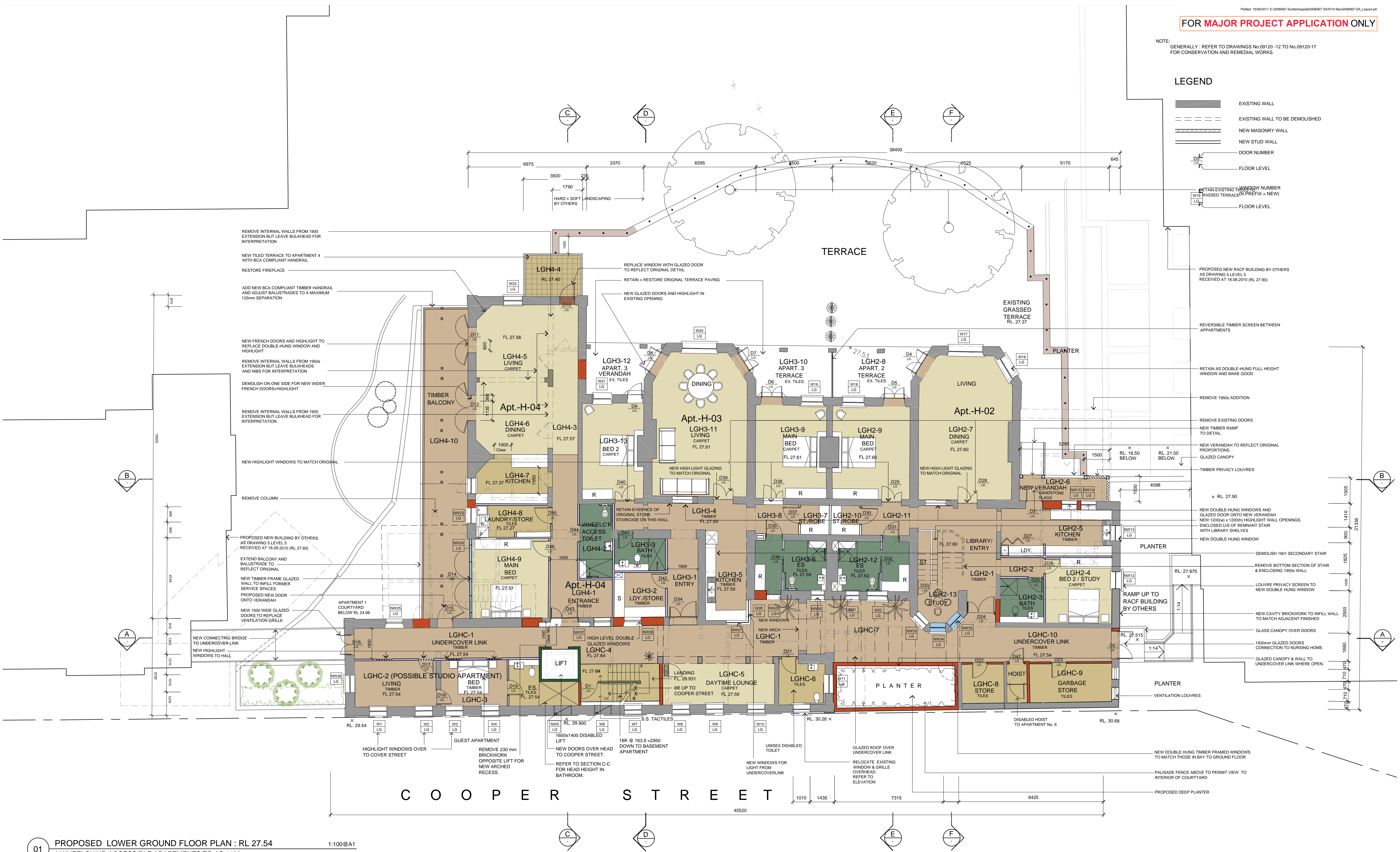


**FOR MAJOR PROJECT APPLICATION ONLY**

NOTE:  
GENERALLY : REFER TO DRAWINGS No.09120 -12 TO No.09120-17  
FOR CONSERVATION AND REMEDIAL WORKS.

# LEGEND

- EXISTING WALL
- EXISTING WALL TO BE DEMOLISHED
- NEW MASONRY WALL
- NEW STUD WALL
- DOOR NUMBER
- FLOOR LEVEL
- RETAIN EXISTING WINDOW NUMBER  
WITH RAISED TERRACE (PREFIX = NEW)
- FLOOR LEVEL



01 PROPOSED LOWER GROUND FLOOR PLAN : RL 27.40  
3 WHEELCHAIR ACCESSIBLE APARTMENTS TO AS 1428

"Copyright JPR Architects Pty Ltd.  
Reproduction of the whole or part of this documents constitutes  
an infringement of copyright. The information, ideas and  
concepts contained in this document are confidential and the  
recipient of this document is prohibited from disclosing such  
information, ideas and concepts to any person without the  
prior written consent of JPR Architects Pty Ltd."

**"THE TERRACES"**  
**SCOTTISH HOSPITAL - 2 COOPER ST. PADDINGTON**

PRINCIPAL ARCHITECT  
**jpr architects pty limited**  
20/50 Stanley Street East Sydney NSW 2010 tel +61 2 9366 1133 fax +61 2 9366 1166 email jpr@jpra.com.au

CONSULTING ARCHITECT: URBAN DESIGN  
**GMU** GM Urban Design + Architecture Pty Ltd

CONSULTING ARCHITECT: AGED CARE  
**Flower and Samios**  
ARCHITECTS

CONSULTING ARCHITECT: HERITAGE  
**CM+** Conybear Morrison International Pty Ltd  
Architecture Interiors Heritage Urban Design Masterplanning  
T: 61 2 6244 8888 F: 61 2 6244 8877 E: m@cmplus.com.au

SCALE AT A1  
**1:100**  
REVISION  
**A**

DATE  
07/10/2010  
PROJECT No  
2006067  
DRAWN  
RM / YS / RK  
ITEM No  
38112

PROJECT ADDRESS  
2 COOPER ST. PADDINGTON  
CLIENT  
Presbyterian Aged Care PADDINGTON  
DRAWING TITLE  
**Heritage Building - Level 5**  
DRAWING No  
**DA 431**

CAUTION: Drawings which have been scanned, saved in PDF format, and/or reprinted,  
other than by JPSA, may not be to scale and should not be scaled or relied on for area  
calculations.

This design has had no input from relevant planning and services or BCA consultants and should not be construed as final

