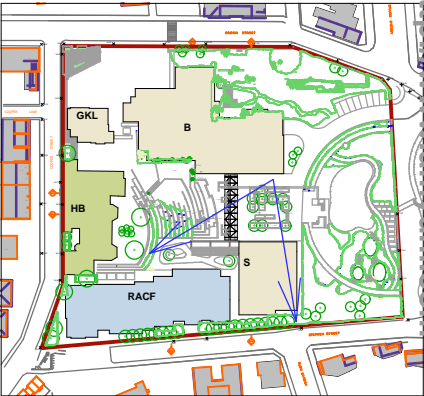


This file was generated with an evaluation version of the Amyuni(r) PDF Converter : <http://www.amyuni.com>



KEY PLAN



Proposed  
View 11 - Internal Piazza looking East

"Copyright JPR Architects Pty Ltd.  
Reproduction of the whole or part of this documents constitutes an infringement of copyright. The information, ideas and concepts contained in this document are confidential and the recipient of this document is prohibited from disclosing such information, ideas and concepts to any person without the prior written consent of JPR Architects Pty Ltd."

**"THE TERRACES"**  
SCOTTISH HOSPITAL - 2 COOPER ST. PADDINGTON



PRINCIPAL ARCHITECT  
**j p r** architects pty limited  
20/50 Stanley Street East Sydney NSW 2010 tel +61 2 9366 1133 fax +61 2 9366 1166 email jpr@jpra.com.au



CONSULTING ARCHITECT: URBAN DESIGN  
GMU GM Urban Design + Architecture Pty Ltd



CONSULTING ARCHITECT: AGED CARE  
Flower and Samios  
architects



CONSULTING ARCHITECT: HERITAGE  
Corybeare Morrison International Pty Ltd  
Architecture Interiors Heritage Urban Design Masterplanning  
T: 61 2 8244 8888 F: 61 2 8244 8877 E: mail@cmplus.com.au  
©CM+ 2010

SCALE AT A3  
NTS  
REVISION  
B  
DATE  
07/10/2010  
PROJECT No  
2006067  
DRAWN  
RM / YS/ RK  
ITEM No  
38326

FOR MAJOR PROJECT APPLICATION ONLY

CAUTION: Drawings which have been scanned, saved in PDF format, and/or reprinted, other than by JPR, may not be to scale and should not be scaled or relied on for area calculations.  
This design has had no input from relevant planning and services or BCA consultants and should not be construed as final

PROJECT ADDRESS  
2 COOPER ST. PADDINGTON  
CLIENT  
Presbyterian Aged Care PADDINGTON

DRAWING TITLE  
**View 11- Internal Piazza  
looking East**  
DRAWING No  
DA 611