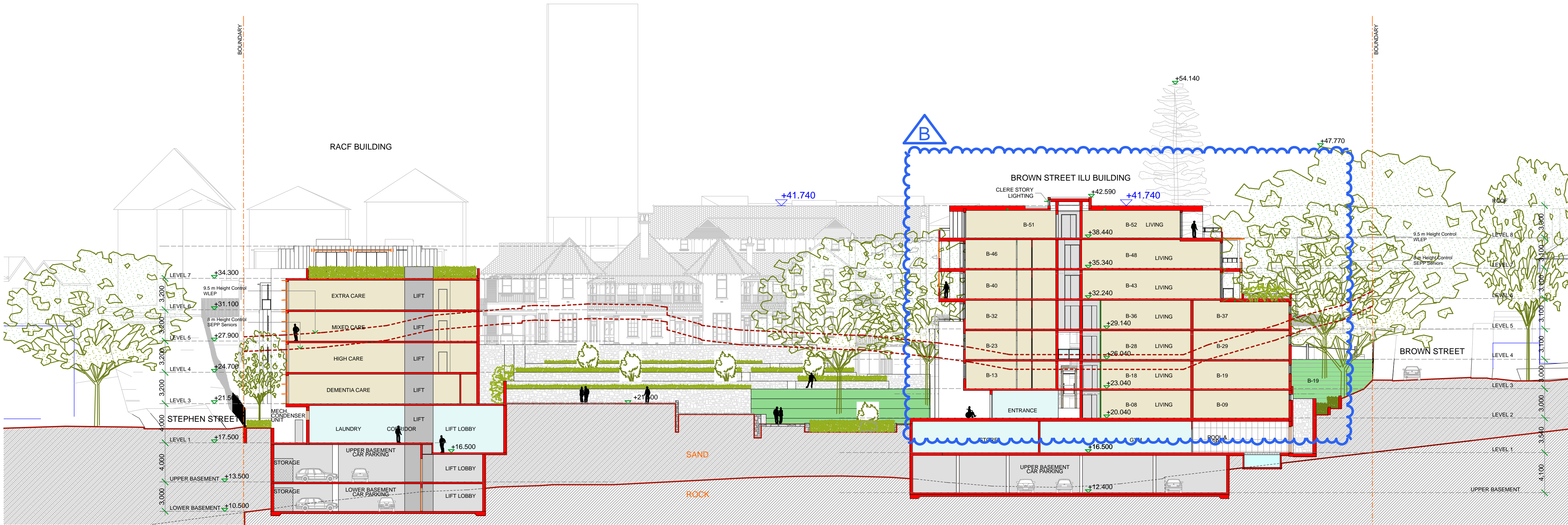


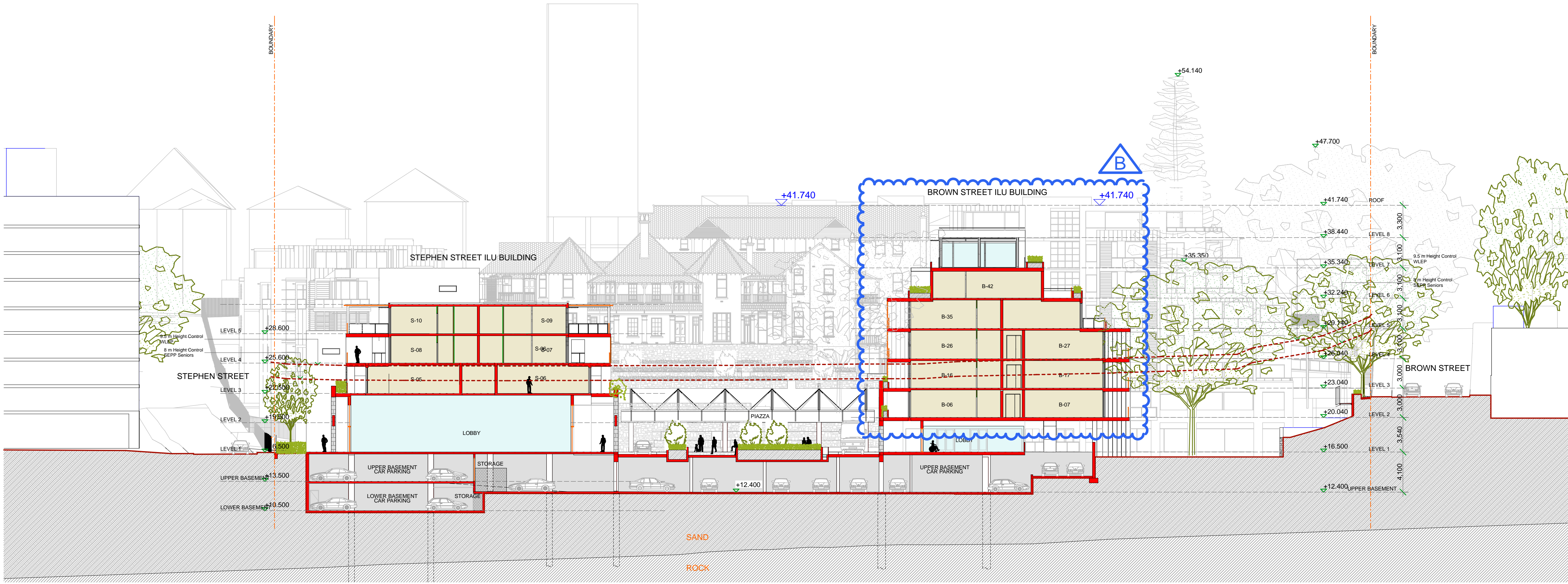
FOR MAJOR PROJECT APPLICATION ONLY

EXTERNAL FINISHES LEGEND

- ① DRY PACK STONE WALL - THREDBO GREY COLOUR SANDSTONE
- ② METAL CLADDING
- ③ MASONRY WALL - BRICK 'JUTE SMOOTH'
- ④ PROFILED ALUMINIUM BOARDING - REVERSE BRICK VENEER WALLS
- ⑤ RENDER AND PAINTED
- ⑥ WINDOW - ALUMINIUM FRAMED GLAZING
- ⑦ BALUSTRADE - STAINLESS STEEL FRAMED GLASS INFILL BALUSTRADE
- ⑧ VERTICAL SHADING LOUVRES - ALUMINIUM FRAMED WITH RECONSTITUTED TIMBER LOUVRES
- ⑨ VERTICAL SHADING LOUVRES - GLASS LOUVRES
- ⑩ HORIZONTAL SUNSCREEN - TIMBER POST & BEAM ON STEEL FRAME WITH ALUMINIUM BLADES / GRILL LOUVRES
- ⑪ FRAMELESS GLASSCANOPY WALKWAY



C Cross Section C - Looking South



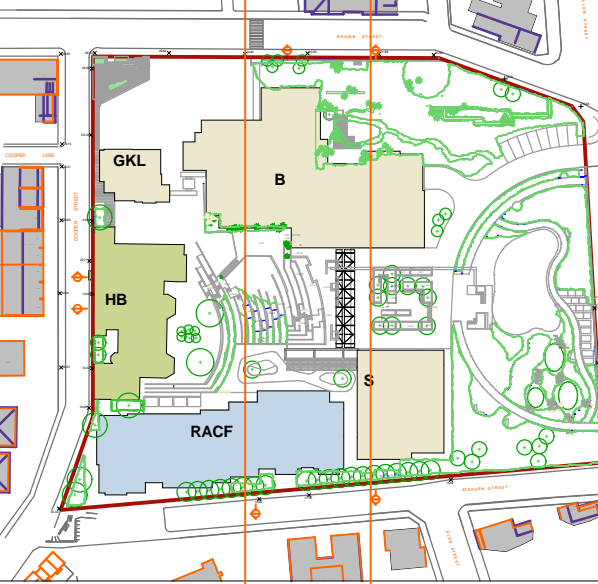
D Cross Section D - Looking South

- 1. Brown St ILU roof height lowered by removing top floor
  - 2. North eastern top corner of RACF reduced in bulk & articulated to match overall elevation
- Rev B 06/06/2011

BUILDING LEGEND

- HB HERITAGE BUILDING ILU
- RACF RACF BUILDING
- B BROWN STREET BUILDING ILU
- S STEPHEN STREET BUILDING ILU
- GKL GATE KEEPERS LODGE BUILDING ILU

KEY PLAN



C D

\*Copyright JPR Architects Pty Ltd.  
Reproduction of the whole or part of this documents constitutes an infringement of copyright. The information, ideas and concepts contained in this document are confidential and the recipient of this document is prohibited from disclosing such information, ideas and concepts to any person without the prior written consent of JPR Architects Pty Ltd.\*

OPTION A - RACF LOADING FACILITY

"THE TERRACES"  
SCOTTISH HOSPITAL - 2 COOPER ST. PADDINGTON

PRINCIPAL ARCHITECT  
jpr architects pty limited  
20/50 Stanley Street East Sydney NSW 2010 tel +61 2 9366 1133 fax +61 2 9366 1166 email jpr@jpra.com.au

CONSULTING ARCHITECT: URBAN DESIGN  
GMU GM Urban Design + Architecture Pty Ltd

CONSULTING ARCHITECT: AGED CARE  
Flower and Samios  
ARCHITECTS

CONSULTING ARCHITECT: HERITAGE  
CM+ Corybear Morrison International Pty Ltd  
Architecture Interiors Heritage Urban Design Masterplanning  
T: 61 2 8244 8888 F: 61 2 8244 8877 E: mail@cmplus.com.au  
© CM+ 2010

SCALE AT A1  
1:250  
REVISION  
B  
DATE  
07/10/2010  
PROJECT No  
2006067  
DRAWN  
RM / YS / RK  
ITEM No  
37675

PROJECT ADDRESS  
2 COOPER ST. PADDINGTON  
CLIENT  
Presbyterian Aged Care PADDINGTON

DRAWING TITLE  
Cross Section C & D  
DRAWING No  
DA 223

CAUTION: Drawings which have been scanned, saved in PDF format, and/or reprinted, other than by JPR, may not be to scale and should not be scaled or relied on for area calculations.  
This design has had no input from relevant planning and services or BCA consultants and should not be construed as final