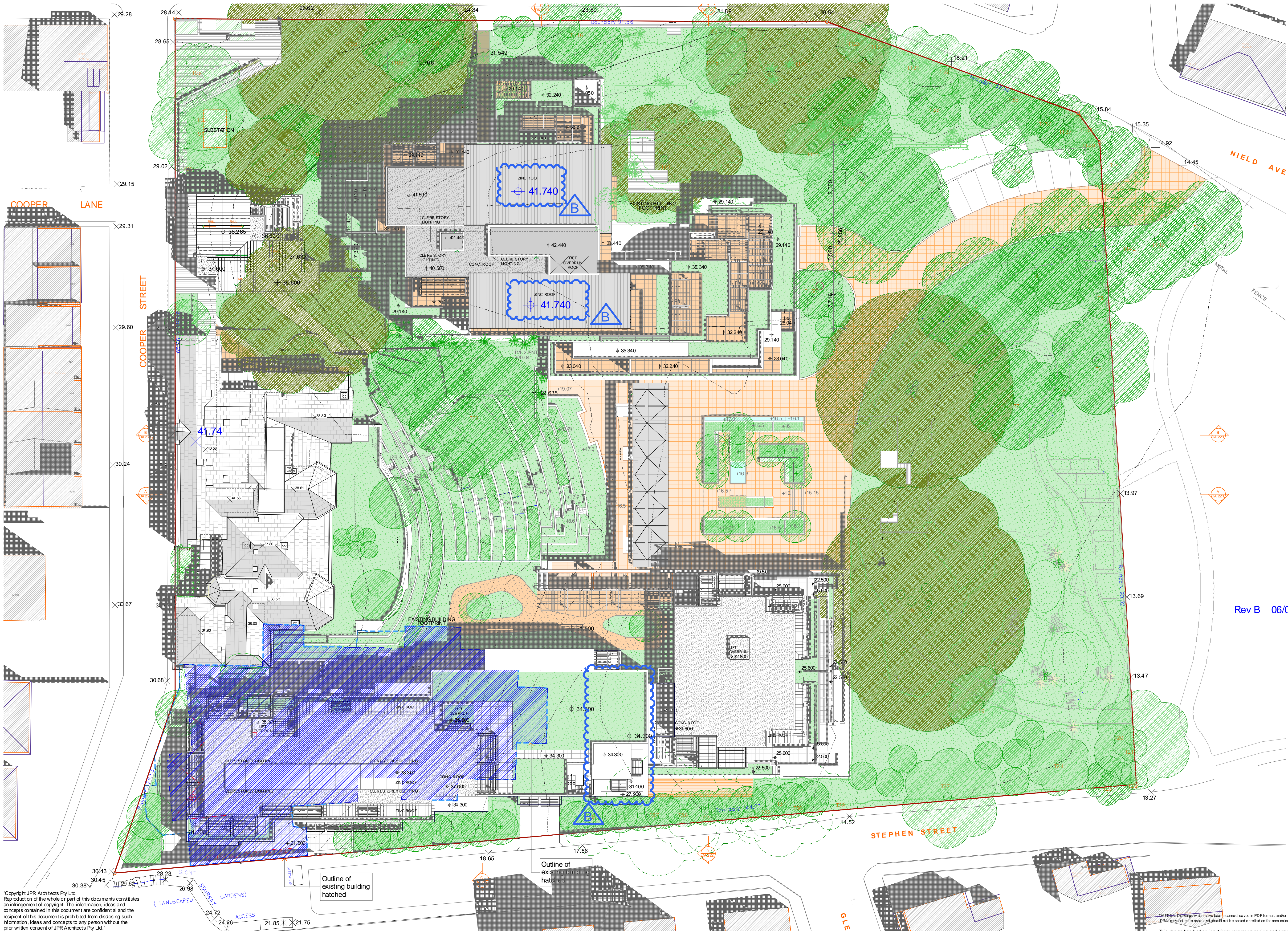


FOR MAJOR PROJECT APPLICATION ONLY

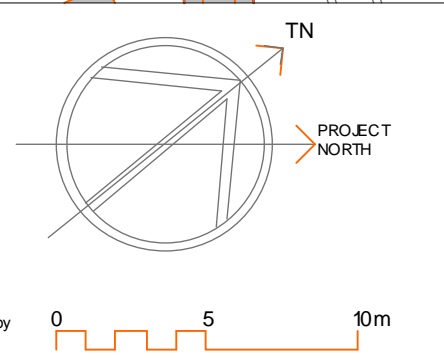
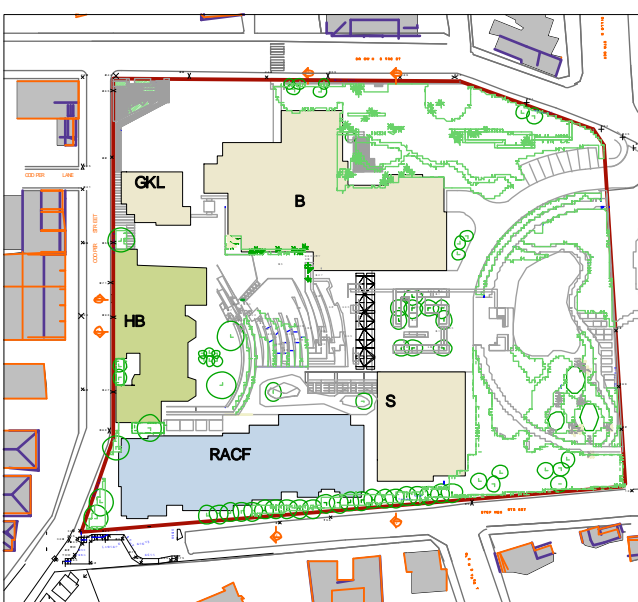


- GENERAL LEGEND
- 00.000 EXISTING RELATIVE LEVEL
 - 00.000 NEW RELATIVE LEVEL
 - EXISTING BUILDING TO BE DEMOLISHED

- TREE LEGEND
- EXISTING TREE CANOPY- HERITAGE LISTED TREE
 - EXISTING TREE CANOPY
 - EXISTING TREE TO BE REMOVED
 - PROPOSED TREE CANOPY

- BUILDING LEGEND
- HB HERITAGE BUILDING ILU
 - RACF RACF BUILDING
 - B BROWN STREET BUILDING ILU
 - S STEPHEN STREET BUILDING ILU
 - GKL GATE KEEPERS LODGE BUILDING ILU

KEY PLAN



DRAWING TITLE
Roof Plan
DRAWING No
DA211

"Copyright JPR Architects Pty Ltd.
Reproduction of the whole or part of this document constitutes an infringement of copyright. The information, ideas and concepts contained in this document are confidential and the recipient of this document is prohibited from disclosing such information, ideas and concepts to any person without the prior written consent of JPR Architects Pty Ltd."

"THE TERRACES"
SCOTTISH HOSPITAL - 2 COOPER ST. PADDINGTON

PRINCIPAL ARCHITECT
jpr architects pty limited
20/50 Stanley Street East Sydney NSW 2010 tel +61 2 9366 1133 fax +61 2 9366 1166 email pr@jpra.com.au

CONSULTING ARCHITECT: URBAN DESIGN
GMU GM Urban Design + Architecture Pty Ltd

CONSULTING ARCHITECT: AGED CARE
Flower and Samios
ARCHITECTS

CONSULTING ARCHITECT: HERITAGE
CM+ Conybeare Morrison International Pty Ltd
Architects, Interior Design, Heritage Urban Design, Masterplanning
T 61 2 6244 8888 F 61 2 6244 8877 E mail@cmplus.com.au

SCALE AT A1
1:250
REVISION
B

DATE
07/10/2010
PROJECT No
2006067
CLIENT
Presbyterian Aged Care PADDINGTON

PROJECT ADDRESS
2 COOPER ST. PADDINGTON

PROJECT NORTH

0 5 10m

This design has had no input from relevant planning and services or BCA consultants and should not be construed as final