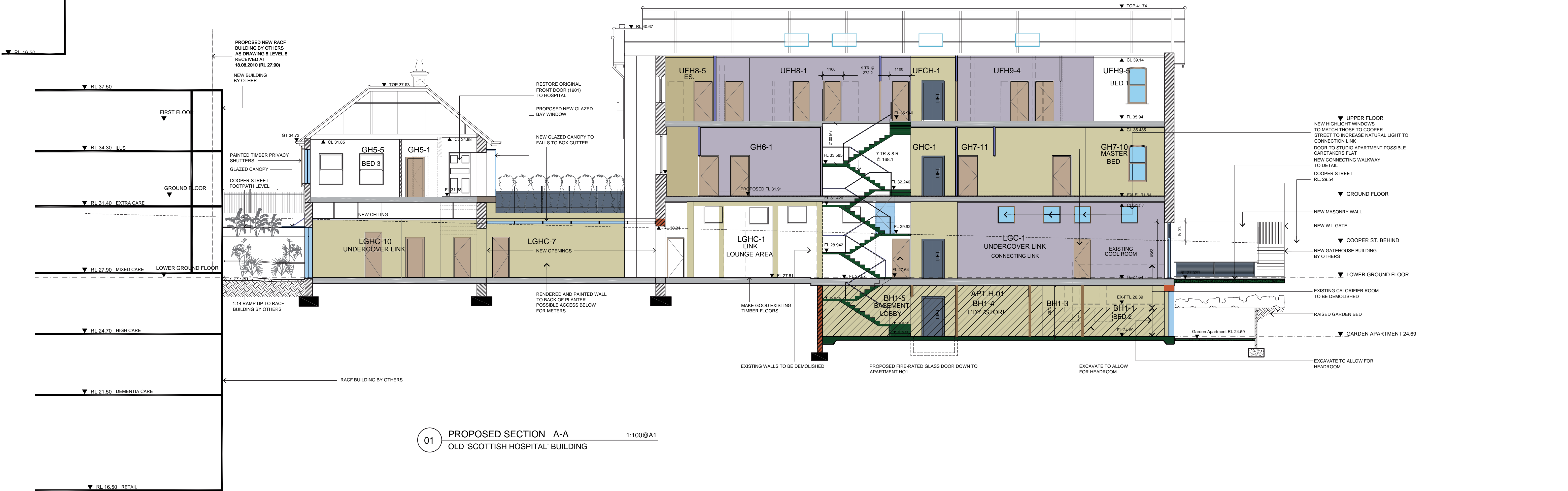
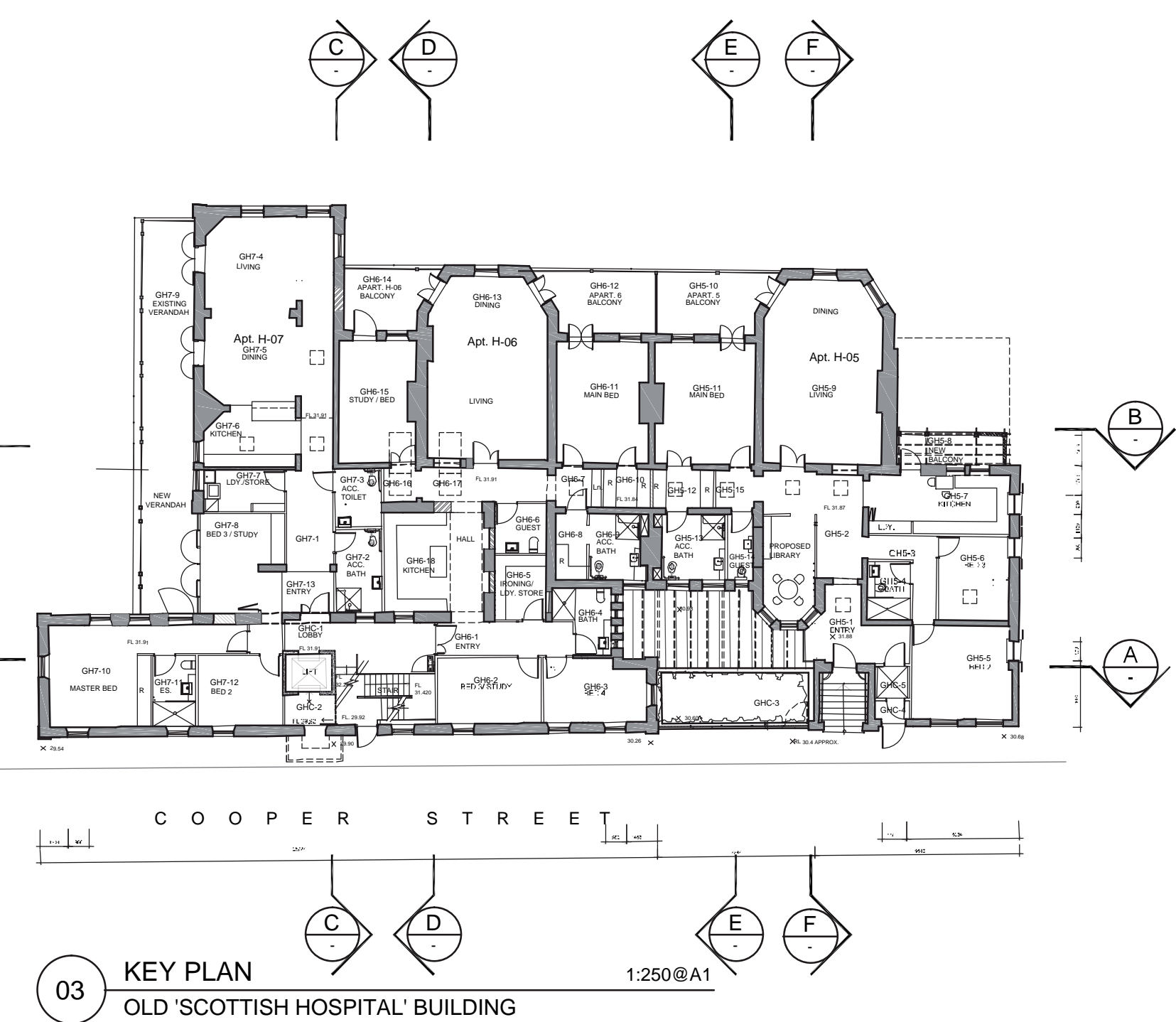
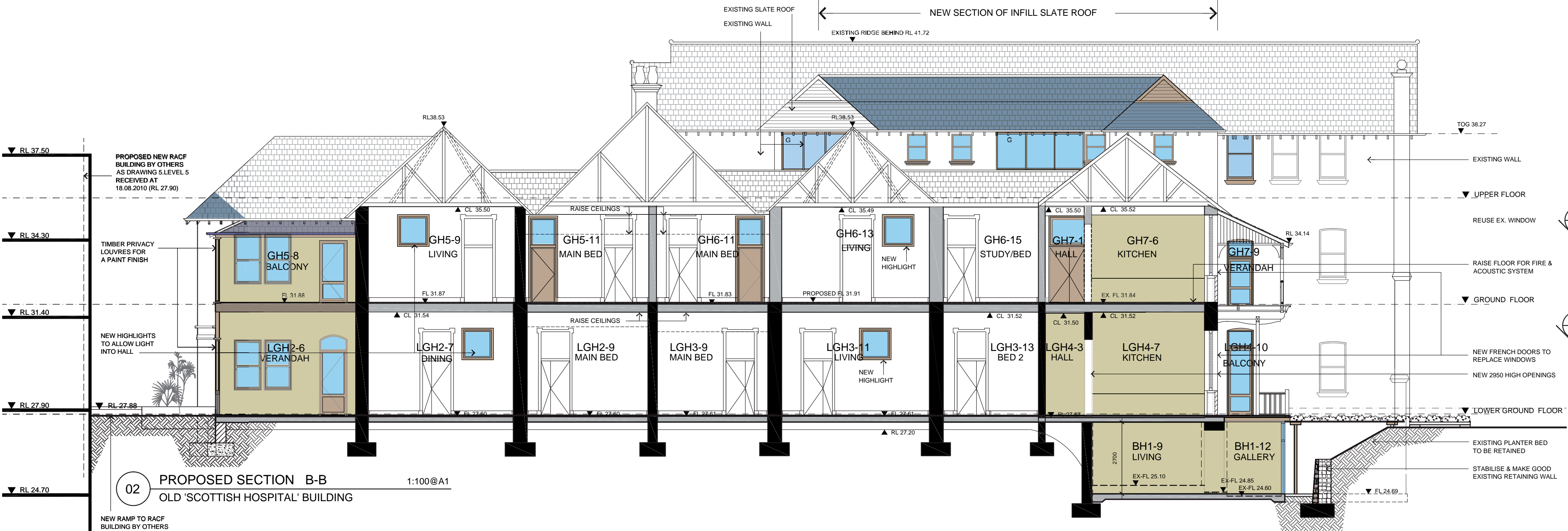


FOR MAJOR PROJECT APPLICATION ONLY



"Copyright JPR Architects Pty Ltd.
Reproduction of the whole or part of this documents constitutes
an infringement of copyright. The information, ideas and
concepts contained in this document are confidential and the
recipient of this document is prohibited from disclosing such
information, ideas and concepts to any person without the
prior written consent of JPR Architects Pty Ltd."

"THE TERRACES"
SCOTTISH HOSPITAL - 2 COOPER ST. PADDINGTON

PRINCIPAL ARCHITECT
jpr architects pty limited
20/50 Stanley Street East Sydney NSW 2010 tel +61 2 9366 1133 fax +61 2 9366 1166 email jon@jpra.com.au

CONSULTING ARCHITECT: URBAN DESIGN
GMU GM Urban Design + Architecture Pty Ltd

CONSULTING ARCHITECT: AGED CARE
Flower and Samios
ARCHITECTS

CONSULTING ARCHITECT: HERITAGE
CM+ Conybear Morison International Pty Ltd
Architecture Interiors Heritage Urban Design Masterplanning
T: 61 2 6244 8888 F: 61 2 6244 8877 E: m@cmplus.com.au
© CM+ 2010

SCALE AT A1
1:100
DATE
07/06/2010
PROJECT No
2006067
REVISION
A
DRAWN
RM / YS/ RK
ITEM No
38118

PROJECT ADDRESS
2 COOPER ST. PADDINGTON
CLIENT
Presbyterian Aged Care PADDINGTON

DRAWING TITLE
Sections

DRAWING No
DA 437

CAUTION: Drawings which have been scanned, saved in PDF format, and/or reprinted,
other than by JPR, may not be to scale and should not be scaled or relied on for area
calculations.

This design has had no input from relevant planning and services or BCA consultants and should not be construed as final