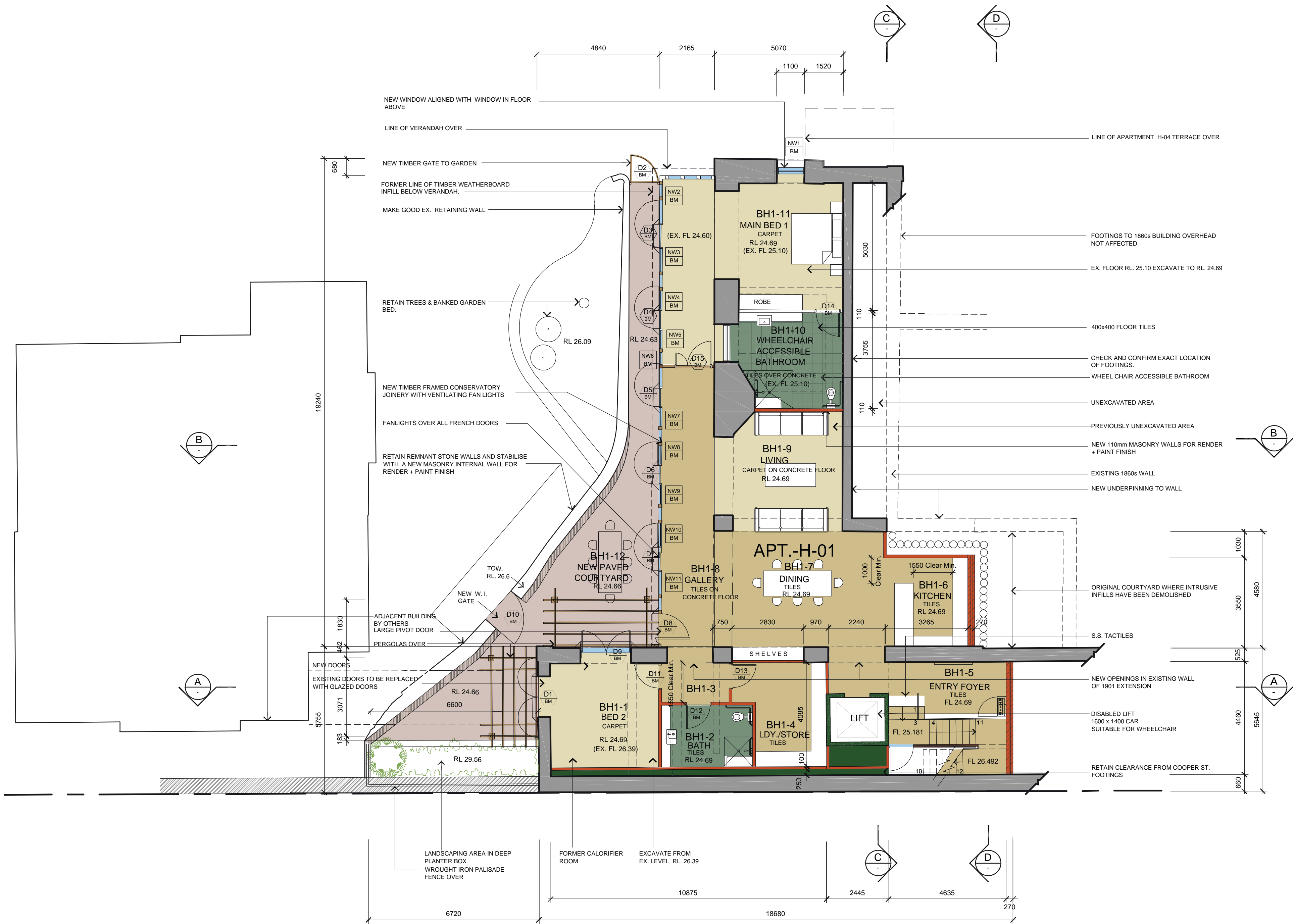


FOR MAJOR PROJECT APPLICATION ONLY

NOTE:  
GENERALLY : REFER TO DRAWINGS No.09120-12 TO No. 09120-17  
FOR CONSERVATION AND REMEDIAL WORKS.

LEGEND

- EXISTING WALL  
EXISTING WALL TO BE DEMOLISHED  
NEW WALL  
NEW EXCAVATION
- DOOR NUMBER  
FLOOR LEVEL-BASEMENT
- WINDOW NUMBER  
(N PREFIX = NEW)  
FLOOR LEVEL-BASEMENT



01 BASEMENT : PROPOSED APARTMENT 1 RL 24.69 1:100@A1  
Compliant with AS 4299 and AS 1428

"Copyright JPR Architects Pty Ltd.  
Reproduction of the whole or part of this documents constitutes  
an infringement of copyright. The information, ideas and  
concepts contained in this document are confidential and the  
recipient of this document is prohibited from disclosing such  
information, ideas and concepts to any person without the  
prior written consent of JPR Architects Pty Ltd."

# "THE TERRACES"

SCOTTISH HOSPITAL - 2 COOPER ST. PADDINGTON

PRINCIPAL ARCHITECT  
jpr architects pty limited  
20/50 Stanley Street East Sydney NSW 2010 tel +61 2 9366 1133 fax +61 2 9366 1166 email jpr@jpra.com.au

CONSULTING ARCHITECT: URBAN DESIGN  
GMU GM Urban Design + Architecture Pty Ltd

CONSULTING ARCHITECT: AGED CARE  
Flower and Samios  
ARCHITECTS

CONSULTING ARCHITECT: HERITAGE  
CM+ Conybeare Morrison International Pty Ltd  
Architecture Interiors Heritage Urban Design Masterplanning  
T 61 2 8244 8888 F 61 2 8244 8877 E mhi@cmplus.com.au  
© CM+ 2010

SCALE AT A1  
1:100  
DATE  
07/06/2010  
PROJECT NO  
2006067  
REVISION  
A  
DRAWN  
RM / YS/ RK  
ITEM NO  
38111

PROJECT ADDRESS  
2 COOPER ST. PADDINGTON  
CLIENT  
Presbyterian Aged Care PADDINGTON

DRAWING TITLE  
Heritage Building - Level 4  
DRAWING NO  
DA 430

CAUTION: Drawings which have been scanned, saved in PDF format, and/or reprinted,  
other than by JPSA, may not be to scale and should not be scaled or relied on for area  
calculations.

This design has had no input from relevant planning and services or BCA consultants and should not be construed as final

DWG NO