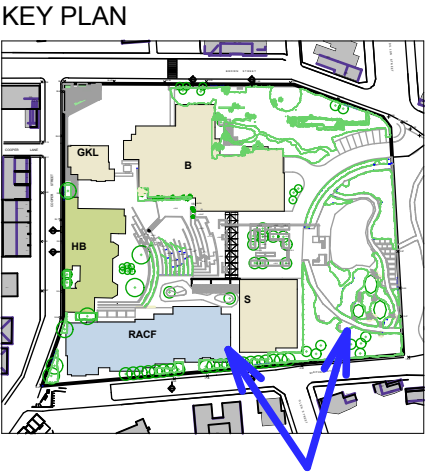




Existing
View 5 - Glenn St



Proposed
View 5 - Glenn St



*Copyright JPR Architects Pty Ltd.
Reproduction of the whole or part of this documents constitutes an infringement of copyright. The information, ideas and concepts contained in this document are confidential and the recipient of this document is prohibited from disclosing such information, ideas and concepts to any person without the prior written consent of JPR Architects Pty Ltd.*

"THE TERRACES"
SCOTTISH HOSPITAL - 2 COOPER ST. PADDINGTON

PRINCIPAL ARCHITECT
j p r architects pty limited
20/50 Stanley Street East Sydney NSW 2010 tel +61 2 9360 1133 fax +61 2 9360 1166 email jpr@jpr.com.au

CONSULTING ARCHITECT: URBAN DESIGN
GMU GM Urban Design + Architecture Pty Ltd

CONSULTING ARCHITECT: AGED CARE
Flower and Samios
ARCHITECTS

CONSULTING ARCHITECT: HERITAGE
CM+ Conybeare Morrison International Pty Ltd
Architecture Interiors Heritage Urban Design Masterplanning
T 61 2 9244 8888 F 61 2 9244 8877 E mail@cmplus.com.au
©CM+ 2010

SCALE AT A3
DATE
05/08/2010
PROJECT No
2006067
REVISION
A
DRAWN
RM / YS/ RK
ITEM No
37707

PROJECT ADDRESS
2 COOPER ST. PADDINGTON
CLIENT
Presbyterian Aged Care PADDINGTON

DRAWING TITLE
View 5- Glenn St
DRAWING No
DA 605

FOR MAJOR PROJECT APPLICATION ONLY

CAUTION: Drawings which have been scanned, saved in PDF format, and/or reprinted, other than by JPR, may not be to scale and should not be scaled or relied on for area calculations

This design has had no input from relevant planning and services or BCA consultants and should not be construed as final