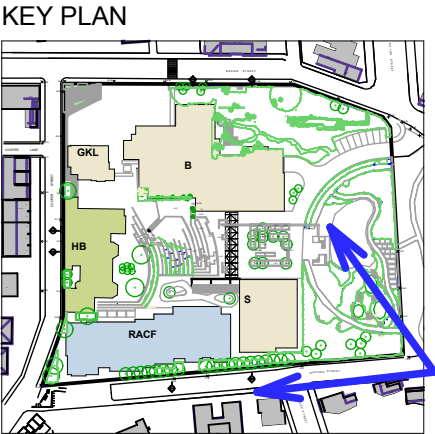




Existing  
View 7 - Stephen St & Dillon Reserve



Proposed  
View 7 - Stephen St & Dillon Reserve



\*Copyright JPR Architects Pty Ltd.  
Reproduction of the whole or part of this documents constitutes an infringement of copyright. The information, ideas and concepts contained in this document are confidential and the recipient of this document is prohibited from disclosing such information, ideas and concepts to any person without the prior written consent of JPR Architects Pty Ltd.\*

**"THE TERRACES"**  
SCOTTISH HOSPITAL - 2 COOPER ST. PADDINGTON

PRINCIPAL ARCHITECT  
**j p r** architects pty limited  
20/50 Stanley Street East Sydney NSW 2010 tel +61 2 9360 1133 fax +61 2 9360 1166 email jpr@jpr.com.au

CONSULTING ARCHITECT: URBAN DESIGN  
**GMU** GM Urban Design + Architecture Pty Ltd

CONSULTING ARCHITECT: AGED CARE  
**Flower and Samios**  
ARCHITECTS

CONSULTING ARCHITECT: HERITAGE  
**CM+** Conybeare Morrison International Pty Ltd  
Architecture Interiors Heritage Urban Design Masterplanning  
T 61 2 9244 8888 F 61 2 9244 8877 E mail@cmplus.com.au  
©CM+ 2010

SCALE AT A3  
NTS  
DATE  
05/08/2010  
PROJECT No  
2006067  
REVISION  
A  
DRAWN  
RM / YS/ RK  
ITEM No  
37709

PROJECT ADDRESS  
2 COOPER ST. PADDINGTON  
CLIENT  
Presbyterian Aged Care PADDINGTON

DRAWING TITLE  
**View 7- Stephen St- Dillon Reserve**  
DRAWING No  
**DA 607**

FOR **MAJOR PROJECT APPLICATION** ONLY

CAUTION: Drawings which have been scanned, saved in PDF format, and/or reprinted, other than by JPSA, may not be to scale and should not be scaled or relied on for area calculations

This design has had no input from relevant planning and services or BCA consultants and should not be construed as final