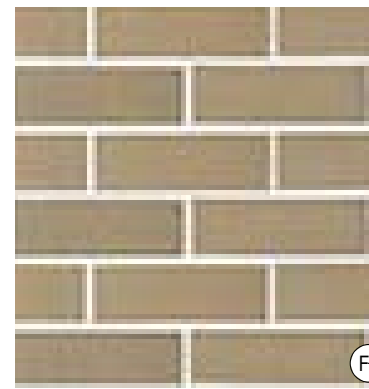
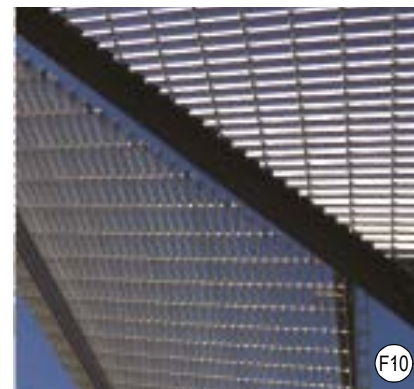
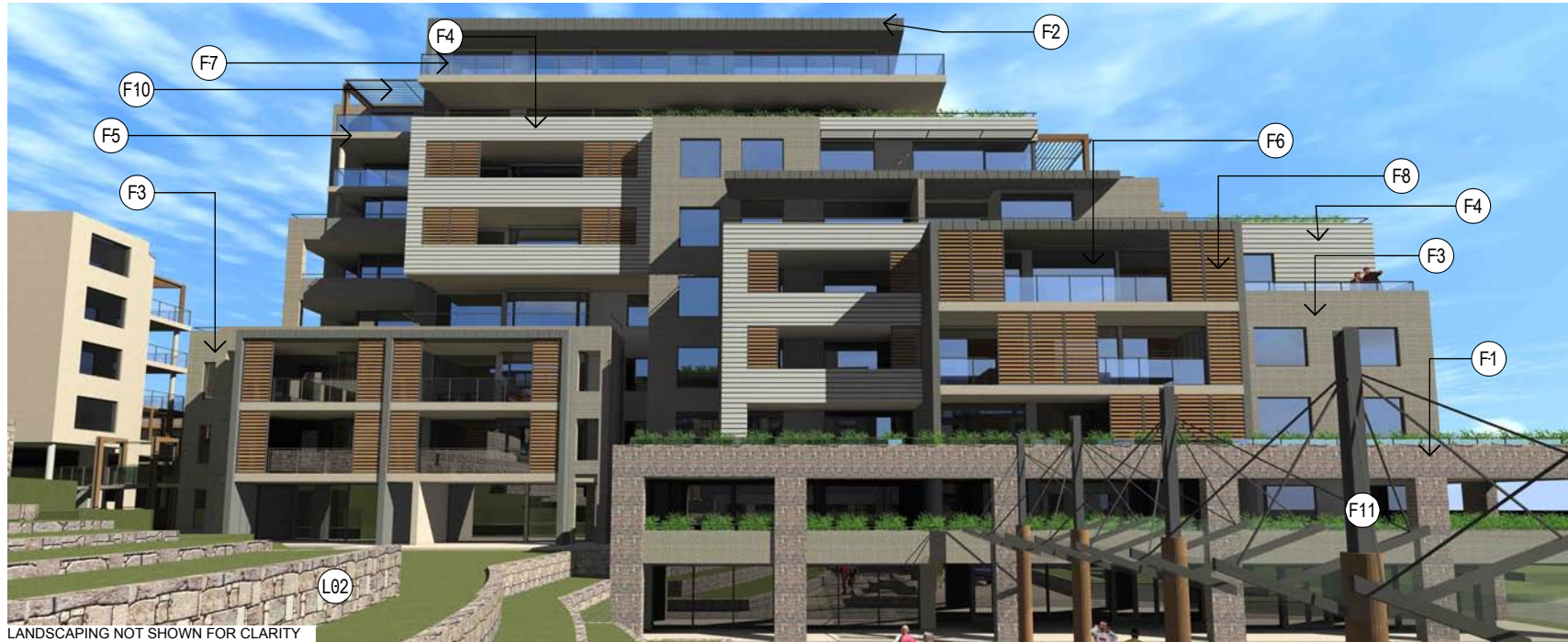


EXTERNAL FINISHES LEGEND

- (F1) DRY PACK STONE WALL - THREDBO GREY COLOUR SANDSTONE
- (F2) METAL CLADDING
- (F3) MASONRY WALL - BRICK 'JUTE SMOOTH'
- (F4) PROFILED ALUMINIUM BOARDING - REVERSE BRICK VENEER WALLS
- (F5) RENDER AND PAINTED
- (F6) WINDOW - ALUMINIUM FRAMED GLAZING
- (F7) BALUSTRADE - STAINLESS STEEL FRAMED GLASS INFILL BALUSTRADE
- (F8) VERTICAL SHADING LOUVRES - ALUMINIUM FRAMED WITH RECONSTITUTED TIMBER LOUVRES
- (F9) VERTICAL SHADING LOUVRES - GLASS LOUVRES
- (F10) HORIZONTAL SUNSCREEN - TIMBER POST & BEAM ON STEEL FRAME WITH ALUMINIUM BLADES / GRILL LOUVRES
- (F11) FRAMELESS GLASS CANOPY WALKWAY WITH TIMBER AND STEEL STRUCTURE
- (F12) ALUMINIUM LOUVRE WIDE BLADE SUNSCREEN
- (F13) HORIZONTAL TIMBER SUNSCREEN



"Copyright JPR Architects Pty Ltd.
Reproduction of the whole or part of this document constitutes an infringement of copyright. The information, ideas and concepts contained in this document are confidential and the recipient of this document is prohibited from disclosing such information, ideas and concepts to any person without the prior written consent of JPR Architects Pty Ltd."

EXTERNAL FINISHES - BROWN ST ILU

FOR MAJOR PROJECT APPLICATION ONLY

CAUTION: Drawings which have been scanned, saved in PDF format, and/or reprinted, other than by JPR, may not be to scale and should not be scaled or relied on for area calculations.

This design has had no input from relevant planning and services or BCA consultants and should not be construed as final.

"THE TERRACES"
SCOTTISH HOSPITAL - 2 COOPER ST. PADDINGTON

PRINCIPAL ARCHITECT
jpr architects pty limited
20/50 Stanley Street East Sydney NSW 2010 tel +61 2 9360 1133 fax +61 2 9360 1166 email jpr@jpr.com.au

CONSULTING ARCHITECT: URBAN DESIGN
GMU GM Urban Design + Architecture Pty Ltd

CONSULTING ARCHITECT: AGED CARE
Flower and Samios

CONSULTING ARCHITECT: HERITAGE
CM+ Conybeare Morrison International Pty Ltd
Architecture Interiors Heritage Urban Design Masterplanning
T: 61 2 8244 9888 F: 61 2 8244 8877 E: mail@cmplus.com.au
©CM+ 2010

SCALE AT A3
NTS
REVISION
A
DATE
05/08/2010
DRAWN
RM / YS / RK
PROJECT No
2006067
ITEM No
38094

PROJECT ADDRESS
2 COOPER ST. PADDINGTON
CLIENT
Presbyterian Aged Care PADDINGTON

DRAWING TITLE
Finishes Board - Brown St ILU
DRAWING No
DA 651