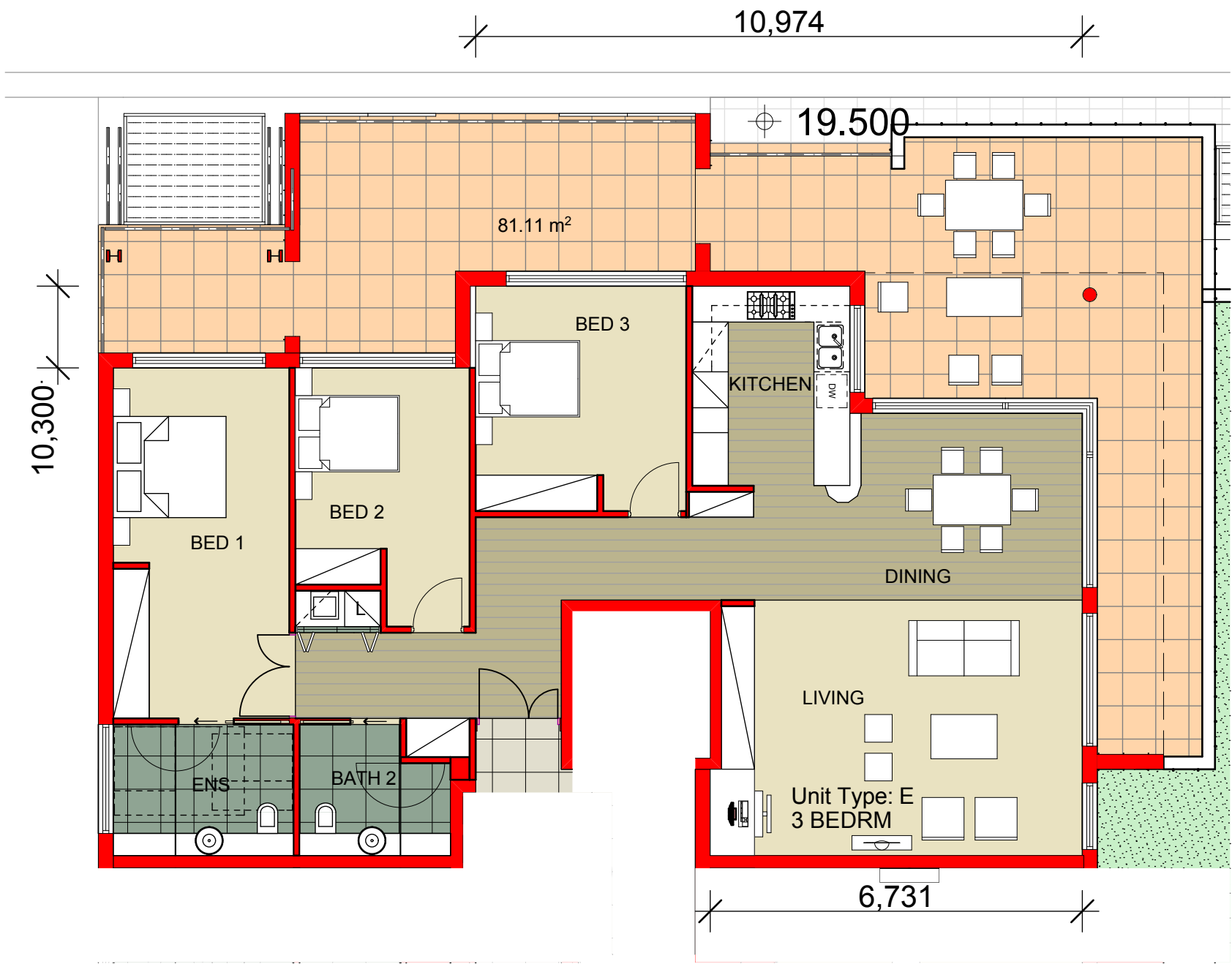


FOR MAJOR PROJECT APPLICATION ONLY



STEPHEN STREET - UNIT TYPE E

"Copyright JPR Architects Pty Ltd.  
Reproduction of the whole or part of this documents constitutes  
an infringement of copyright. The information, ideas and  
concepts contained in this document are confidential and the  
recipient of this document is prohibited from disclosing such  
information, ideas and concepts to any person without the  
prior written consent of JPR Architects Pty Ltd."

"THE TERRACES"  
SCOTTISH HOSPITAL - 2 COOPER ST. PADDINGTON



PRINCIPAL ARCHITECT  
j p r architects pty limited  
20/50 Stanley Street East Sydney NSW 2010 tel +61 2 9366 1133 fax +61 2 9366 1166 email jpr@jpr.com.au



CONSULTING ARCHITECT: URBAN DESIGN  
GMU GM Urban Design + Architecture Pty Ltd



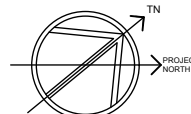
CONSULTING ARCHITECT: AGED CARE  
Flower and Samios  
ARCHITECTS



CONSULTING ARCHITECT: HERITAGE  
Corybeare Morrison International Pty Ltd  
Architecture Interiors Heritage Urban Design Masterplanning  
T 61 2 8244 8888 F 61 2 8244 8877 E mail@cmplus.com.au  
©CM+ 2010

SCALE AT A3  
1:100  
REVISION  
A  
DATE  
05/08/2010  
PROJECT No  
2006067  
DRAWN  
RM / YS/ RK  
ITEM No  
37671

PROJECT ADDRESS  
2 COOPER ST. PADDINGTON  
CLIENT  
Presbyterian Aged Care PADDINGTON



CAUTION: Drawings which have been scanned, saved in PDF format, and/or reprinted, other than by JPR, may not be to scale and should not be scaled or relied on for area calculations.

This design has had no input from relevant planning and services or BCA consultants and should not be construed as final.

DRAWING TITLE  
Stephen St ILU - Unit Plans -  
Sheet 3  
DRAWING No  
DA 463