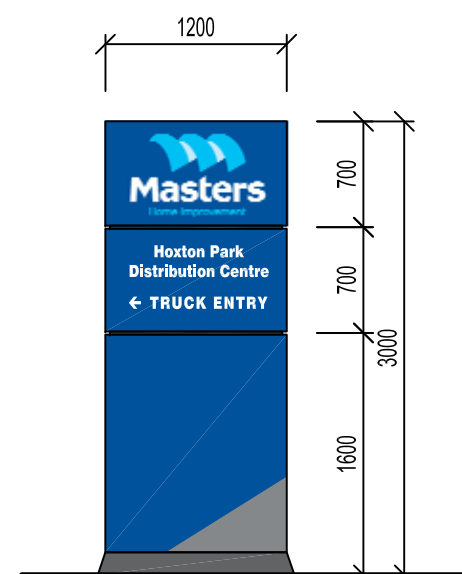
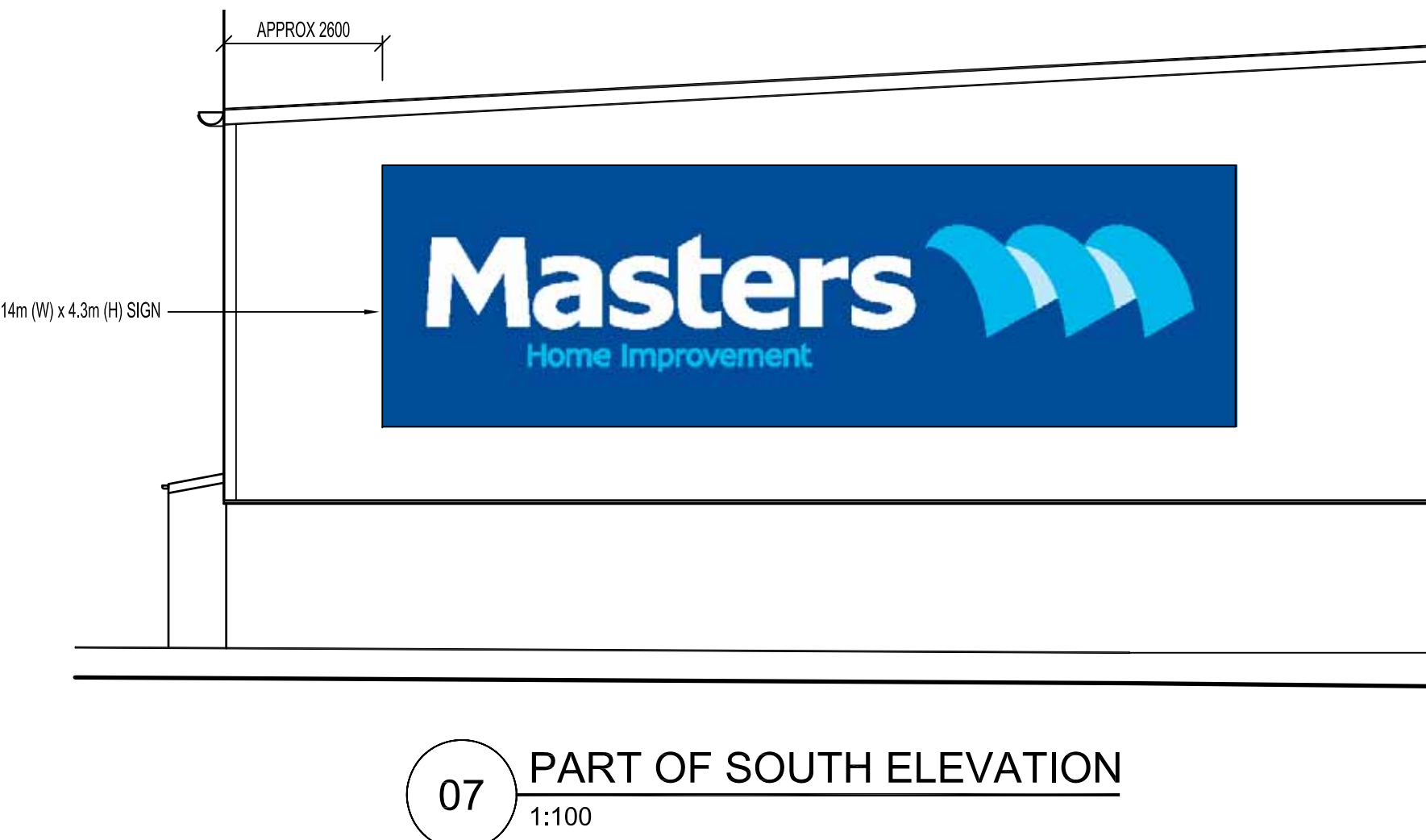
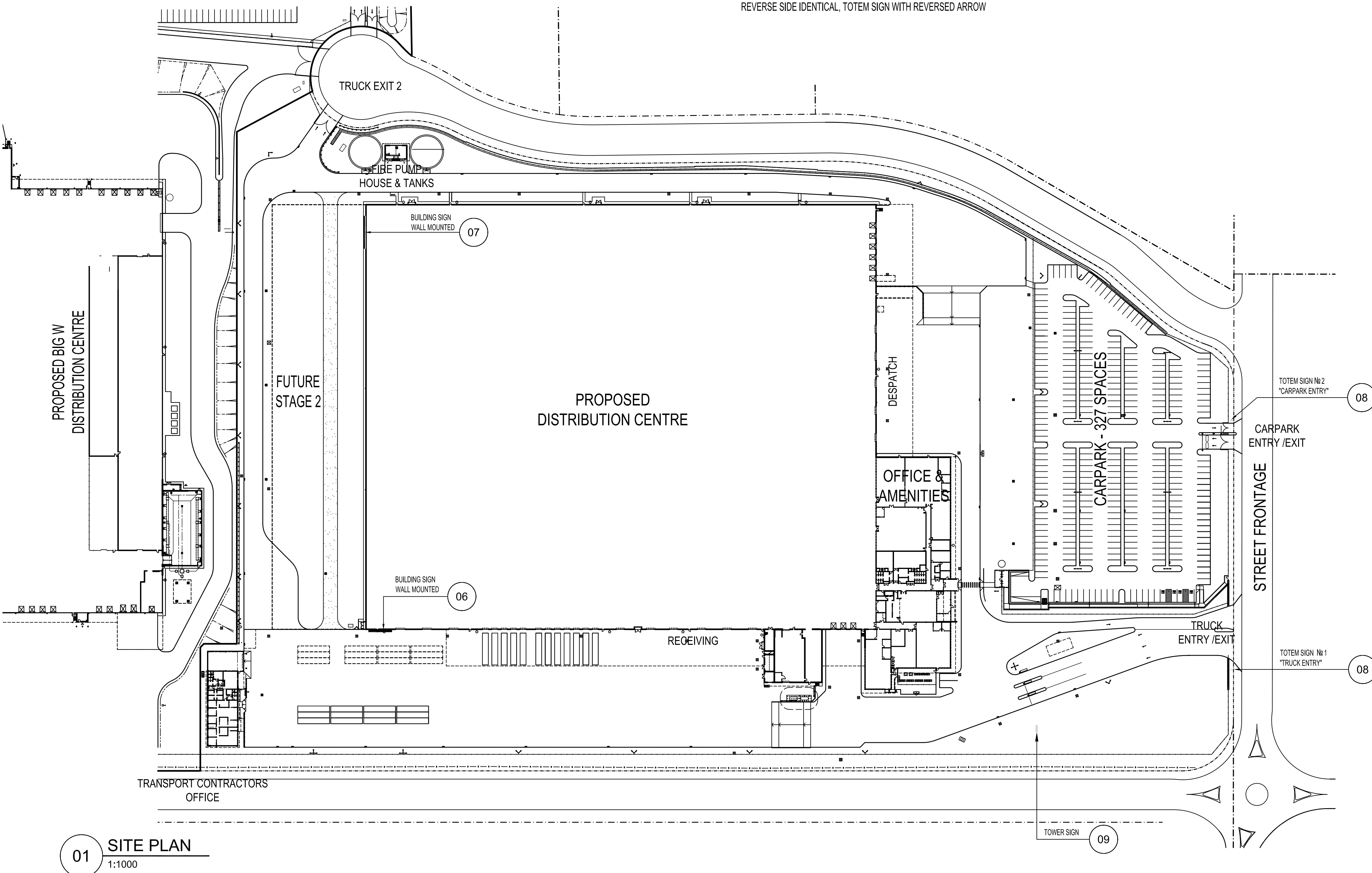
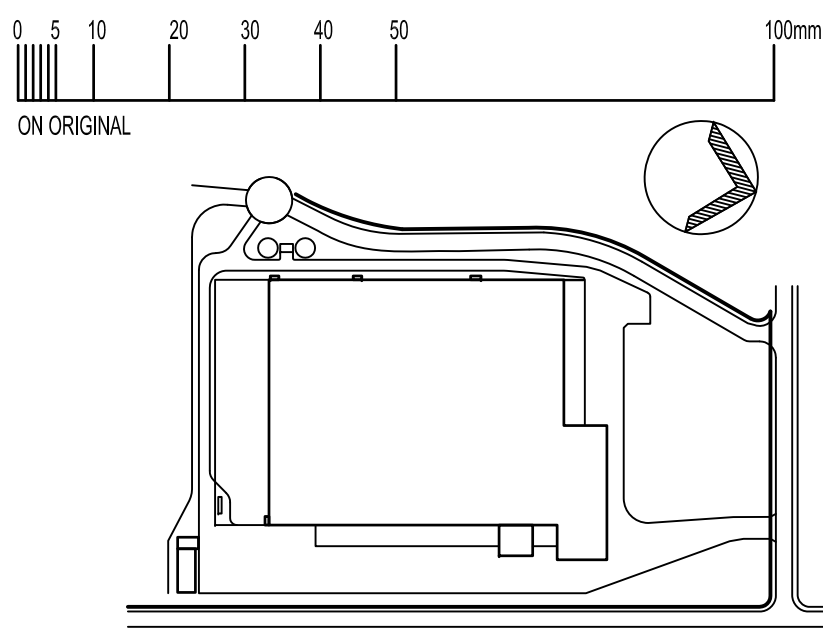
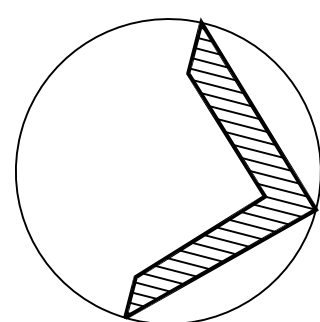
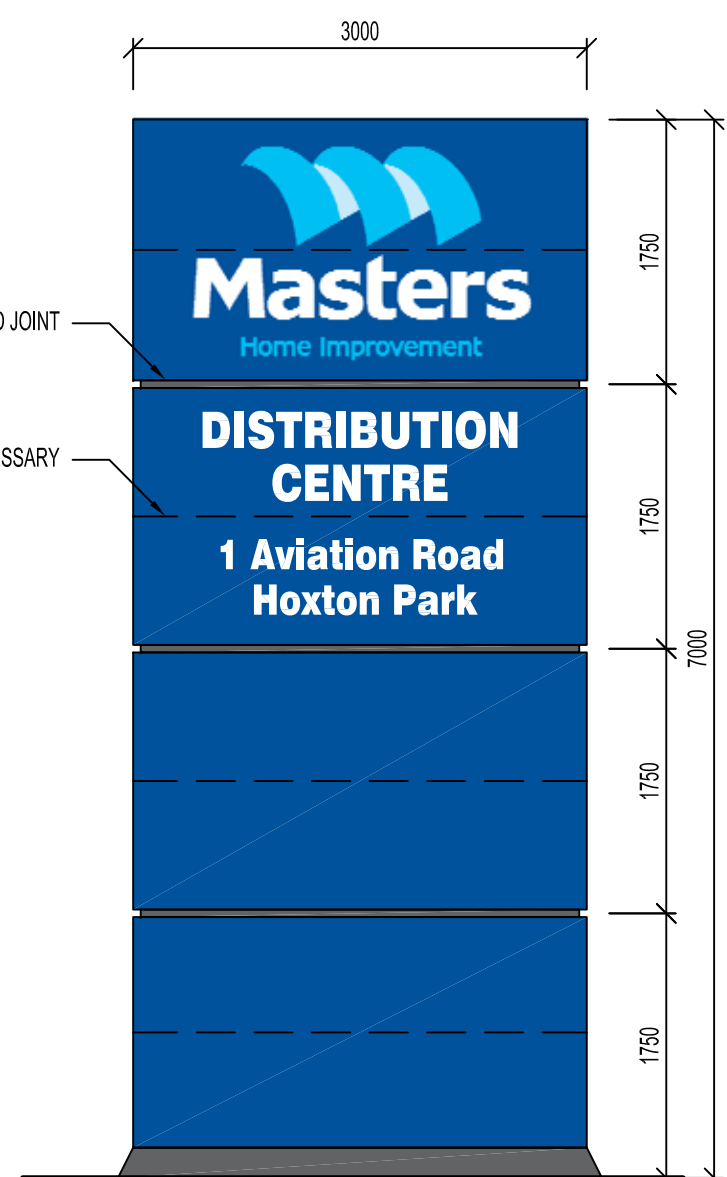


SIGNAGE TEXT SCHEDULE				
		TOWER SIGN	TOTEM № 1	TOTEM № 2
FRONT	PANEL 1	MASTERS LOGO	MASTERS LOGO	MASTERS LOGO
	PANEL 2	DISTRIBUTION CENTRE 1 Aviation Road Hoxton Park	Hoxton Park Distribution Centre TRUCK ENTRY (WITH ARROW POINTING TO THE ENTRY)	Hoxton Park Distribution Centre CARPARK ENTRY (WITH ARROW POINTING TO THE ENTRY)
	PANEL 3, 4			

REVERSE SIDE IDENTICAL, TOTEM SIGN WITH REVERSED ARROW



FINISHES LEGEND	
	ACM PANELLING ALUCOBOND ULTRAMARINE BLUE
	VINYL AVERY 980 SILVER METALLIC COLOR TO MATCH PMS 877
	PAINT COLOR TO MATCH PMS COOL GREY 10



#### KEY PLAN

THE PROPERTY IN THIS DRAWING AND IN THE CONCEPTS REMAIN WITH MNIA ARCHITECTS PTY LTD. ANY UNAUTHORISED USE OF THIS DRAWING WHETHER AS THE WHOLE OR PART MAY RENDER THE USER LIABLE IN AN ACTION FOR DAMAGES. CONSEQUENTIAL DAMAGES ARISING FROM UNWARRANTED OR UNAUTHORISED USE SHALL NOT RENDER MNIA ARCHITECTS PTY LTD LIABLE.

DIMENSIONS MUST NOT BE SCALED FROM DRAWINGS.

ALL DIMENSIONS TO BE CONFIRMED ON SITE PRIOR TO THE COMMENCEMENT OF ANY WORK.

#### NOTE

FOR SIGN FABRICATION CONCEPT REFER TO HULSBOSCH DRAWING "PROJECT OXYGEN | BRAYBROOK VIC - PRESENTATION R | 17 FEBRUARY 2011".

REV.	DATE	AMENDMENT	SIGNED
K	22.07.11	TOTEM SIGN FONT REVISED TO WOW DM COMMENT	GL
J	22.07.11	SIGNAGE TEXT SCHEDULE UPDATED	GL
I	22.07.11	TOWER SIGN FONT REVISED TO WOW DM COMMENTS	GL
H	22.07.11	SIGNAGE FONT REVISED TO WOW DM COMMENTS	GL
G	20.07.11	LOGO ADDED, TOTEM SIGN SIZE CHANGED BACK	GL
F	13.07.11	TOTEM SIGN SIZE REDUCED	GL
E	13.07.11	TOTEM SIGN & TOWER SIGN SHOWN AS OUTLINE	GL
D	19.05.11	TOTEM SIGN & TOWER SIGN SHOWN AS OUTLINE	GL
C	18.01.10	SHOWN AS OUTLINE	GL
B	18.01.10	FIRE WATER TANK SHOWN ON ELEVATION	GL
A	13.01.10	SIGNAGE DESIGN REVISED AS REQUIRED	GL
A	13.01.10	NEW DRAWING	GL

REV.	DATE	AMENDMENT	SIGNED
K	22.07.11	TOTEM SIGN FONT REVISED TO WOW DM COMMENT	GL
J	22.07.11	SIGNAGE TEXT SCHEDULE UPDATED	GL
I	22.07.11	TOWER SIGN FONT REVISED TO WOW DM COMMENTS	GL
H	22.07.11	SIGNAGE FONT REVISED TO WOW DM COMMENTS	GL
G	20.07.11	LOGO ADDED, TOTEM SIGN SIZE CHANGED BACK	GL
F	13.07.11	TOTEM SIGN SIZE REDUCED	GL
E	13.07.11	TOTEM SIGN & TOWER SIGN SHOWN AS OUTLINE	GL
D	19.05.11	TOTEM SIGN & TOWER SIGN SHOWN AS OUTLINE	GL
C	18.01.10	SHOWN AS OUTLINE	GL
B	18.01.10	FIRE WATER TANK SHOWN ON ELEVATION	GL
A	13.01.10	SIGNAGE DESIGN REVISED AS REQUIRED	GL
A	13.01.10	NEW DRAWING	GL

CLIENT  
Mirvac Projects Pty Ltd  
ABN 72 001 085 245  
Level 26, 80 Margaret St.  
Sydney, NSW, 2000  
tel. 02 9080 8000  
fax. 02 9080 8181

PROJECT  
DICK SMITH  
DISTRIBUTION CENTRE  
HOXTON PARK NSW

ARCHITECT  
MNIA ARCHITECTS  
Level 4, 8 Help Street  
PO Box 1212  
Chatswood NSW 2067  
Telephone (02) 9495 6400  
Facsimile (02) 9495 6444  
mail@mnia.com.au

STRUCTURAL & CIVIL ENGINEERS  
COSTIN ROE CONSULTING PTY LTD  
Suite 310, 55 Harrington St, The Rocks Sydney NSW 1220  
Tel: (02) 9251 7899 Fax: (02) 9241 3731

CONSULTING SERVICES ENGINEERS  
BECA PTY LTD  
Suite 6, Level 3, 9 George Street Parramatta NSW 2150  
Tel: (02) 9891 6773 Fax: (02) 9633 9477

MATERIALS HANDLING SYSTEM  
DEMATIC PTY LTD  
24 Narabang Way Belrose NSW 2085  
Tel: (02) 9486 5555 Fax: (02) 9486 5511

SECURITY CONSULTANT  
INTEGRITY  
Unit 8, 287 Victoria Road, Rydalmere NSW 2116  
Tel: 1300 386 488 Fax: 1300 664 662

TITLE		SITE SIGNAGE	
DATE	25-01-10	PROJECT No.	STATUS
SCALE	AS SHOWN (B1)	0931	AR/SK
DRAWN	GL	DWG No.	REV No.
CHECKED		SK 18	/K
APPROVED			

# Masters Hoxton Park – Distribution Centre Signage

This is to be read in conjunction with SK18 /K

## Building Signs

### *Sign 07 – South Face of Building*

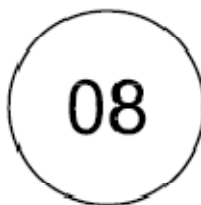
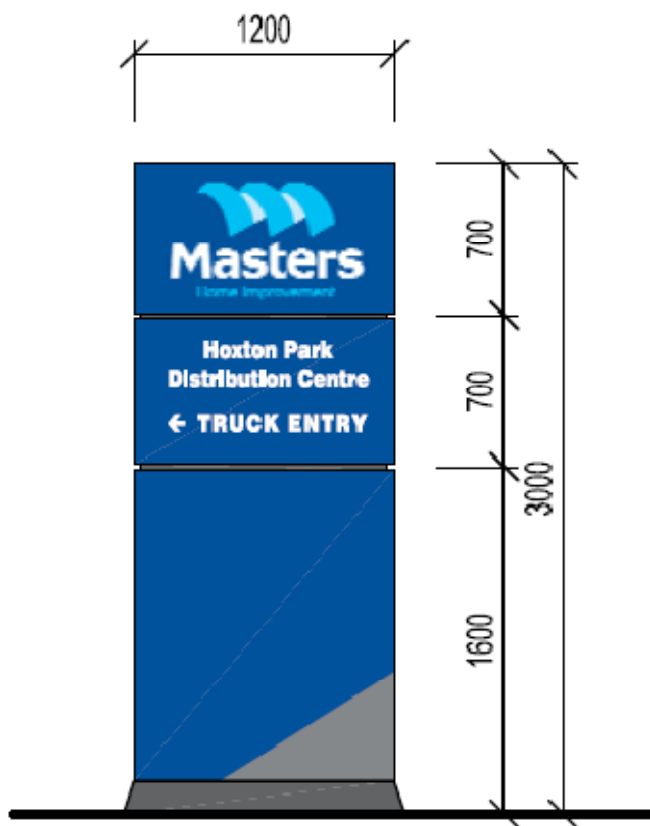
- "Masters Home Improvement" with 1300mm horizontal Icon
- 10000x3000mm ACM backing panel to match PMS661
- Individual 3D Flat Acrylic fabricated letters to be 100mm returns (deep)
- 3D Icon is flat acrylic fabrication (not curved profile)
- Each letter and the Icon are to be LED Internally illuminated

### *Sign 06 – East Face of Building*

- "Masters Home Improvement" with 1300mm horizontal Icon. Overall Sign size 14000x4300mm
- ACM backing panel to match PMS661
- Individual 3D Flat Acrylic fabricated letters to be 125mm returns (deep)
- 3D Icon is flat acrylic fabrication (not curved profile)
- Each letter and the Icon are to be LED Internally illuminated

### *Sign 08 – Totem Signs (x2)*

- Double sided pylon sign: 3000x1200x200mm (width TBC)
- Clad in 4mm ACM to match PMS 661
- Intracut graphics including Masters Icon push through opal acrylic flush with ACM.
- LED Internally illuminated



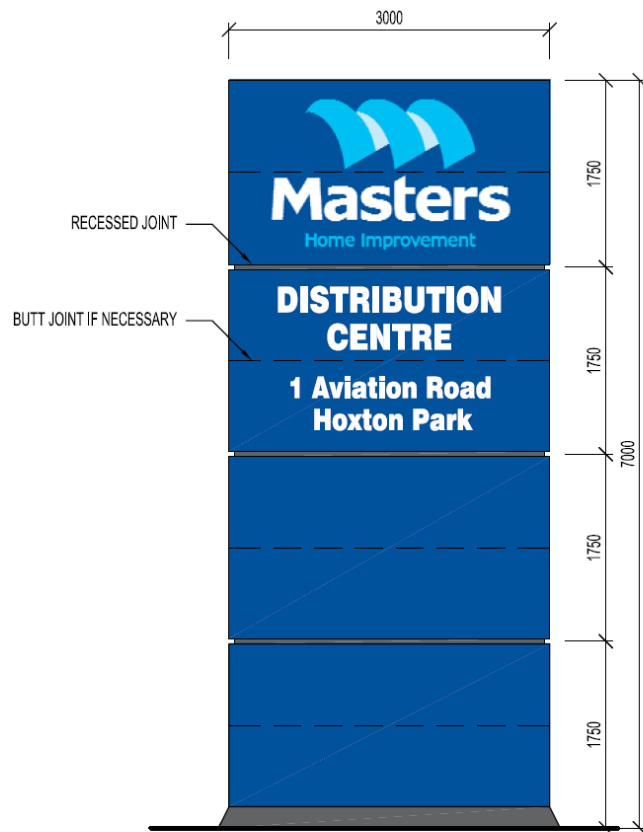
## TOTEM SIGN

1:50

NOTE:  
INTERNALLY LED ILLUMINATED

## Sign 09 –Tower Sign

- Double sided pylon sign: 7000x3000x300mm (width TBC)
- Clad in 4mm ACM to match PMS 661
- Intracut graphics including Masters Icon push through opal acrylic flush with ACM
- LED Internally illuminated



09 TOWER SIGN  
1:50  
NOTE:  
INTERNALLY LED ILLUMINATED