

Notice of Modification

Section 75W of the *Environmental Planning and Assessment Act 1979*

As delegate of the Minister for Planning, I modify the project approval referred to in Schedule 1, as set out in Schedule 2.

Chris Wilson
Executive Director
Major Projects Assessment

Sydney

23 January

2011

SCHEDULE 1

The project approval for Dick Smith Warehouse Facility for the Hoxton Park Warehouse Project, granted by the Minister for Planning on 3 June 2010 (10_0010).

SCHEDULE 2

1. Delete condition 2 of Schedule 2, and relace with:

The Proponent shall carry out the project generally in accordance with the:

- (a) EA;
- (b) site plans DA-01/F, DA-06, DA-07, DA-10/D and DA-11/E, DA-12 (see Appendix 1);
- (c) preferred project report;
- (d) statement of commitments (see Appendix 2);
- (e) modification application 10_0010 MOD 1 and accompanying letter and Environmental Assessment titled: *Hoxton Park – Dick Smith Warehouse Facility & Associated Infrastructure Project Approval 10_0010* dated 29 November 2010; and
- (f) conditions of this approval.

2. In Appendix 1 delete plans DA-01, DA-10 and DA-11, and replace with:



KEY PLAN

THE KEY PLAN IS A REFERENCE TO THE BUILDING'S LOCATION ON THE SITE. IT IS NOT A TOPOGRAPHICAL MAP. THE BUILDING IS SHOWN IN RELATION TO THE SITE BOUNDARIES AND THE SURROUNDING LAND. THE KEY PLAN IS NOT A SCALE DRAWING. THE SCALE OF THE KEY PLAN IS 1:1000. THE KEY PLAN IS NOT A TOPOGRAPHICAL MAP. THE BUILDING IS SHOWN IN RELATION TO THE SITE BOUNDARIES AND THE SURROUNDING LAND. THE KEY PLAN IS NOT A SCALE DRAWING. THE SCALE OF THE KEY PLAN IS 1:1000. THE KEY PLAN IS NOT A TOPOGRAPHICAL MAP. THE BUILDING IS SHOWN IN RELATION TO THE SITE BOUNDARIES AND THE SURROUNDING LAND. THE KEY PLAN IS NOT A SCALE DRAWING. THE SCALE OF THE KEY PLAN IS 1:1000.



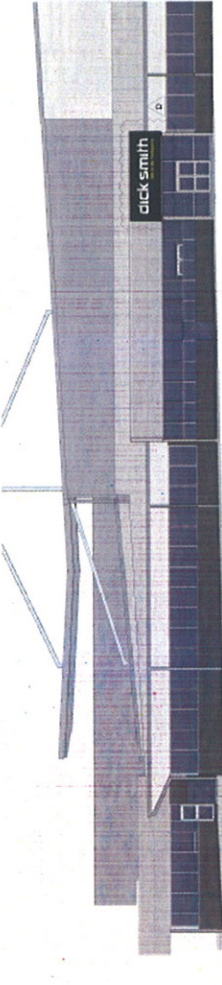
01 EAST ELEVATION
1:500



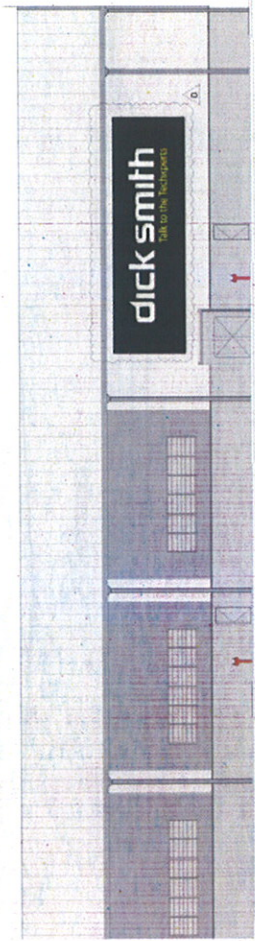
02 WEST ELEVATION
1:500



03 SOUTH ELEVATION
1:500



04 PART NORTH ELEVATION
1:500



05 PART WEST ELEVATION
1:500

06 NORTH ELEVATION
1:500

COLOR PALETTE

SHALE GREY CONCRETE	SURFIST
WANDSPRAY	MONUMENT
SUNRISE SUPERMETALIC	SURFIST ROOF

01 1:500
02 1:500
03 1:500
04 1:500
05 1:500
06 1:500



DICK SMITH
DISTRIBUTION CENTRE
HOXTON PARK NSW

01 1:500
02 1:500
03 1:500
04 1:500
05 1:500
06 1:500

01 1:500
02 1:500
03 1:500
04 1:500
05 1:500
06 1:500

01 1:500
02 1:500
03 1:500
04 1:500
05 1:500
06 1:500

01 1:500
02 1:500
03 1:500
04 1:500
05 1:500
06 1:500

01 1:500
02 1:500
03 1:500
04 1:500
05 1:500
06 1:500

