

- KEY
- CARPARK SHADE TREE- *Tristanopsis laurina* 'Luscious', Water Gum.
  - STREET TREE- *Lophostemon confertus*, Brush Box.
  - SHADE TREE- *Eucalyptus moluccana*, Grey Box.
  - PAVED SURFACE. REFER TO ARCHITECTS DWGS.
  - TURF.
  - MASS SHRUB PLANTING.
  - MASS GROUNDCOVER PLANTING.
  - HYDROSEEDED GRASS. TO FUTURE SPECIFICATION.
  - DETENTION BASIN PLANTING- GROUP 1.
  - DETENTION BASIN PLANTING- GROUP 2.
  - DETENTION BASIN PLANTING- GROUP 3.
  - MASS PLANTING TO FUTURE DRAINAGE CULVERT.

NOTE:  
EXISTING TREES TO BE REMOVED AND RETAINED TBC.



REVISED PART 3A ISSUE	SM	12.02.10	D
PART 3A ISSUE	SM	09.02.10	C
PURPOSE OF ISSUE	REVIEW	DATE	ISSUE

LANDSCAPE PLAN 01  
SCALE 1:1000 @ A1

CLIENT	MIRVAC
PROJECT ADDRESS	HOXTON PARK REDEVELOPMENT
LOCATION	
DRAWING TITLE	Authority Approval
ORIGINAL MEDIA SIZE	A1
PLOT TIME	12.02.10
STATUS	D

Architects work is subject to Copyright. Documents should not be used contrary to the purpose of the issue without written permission from Habitation. NEVER scale off drawings, use figured dimensions only

www.habitation.com.au

10\_003 L001

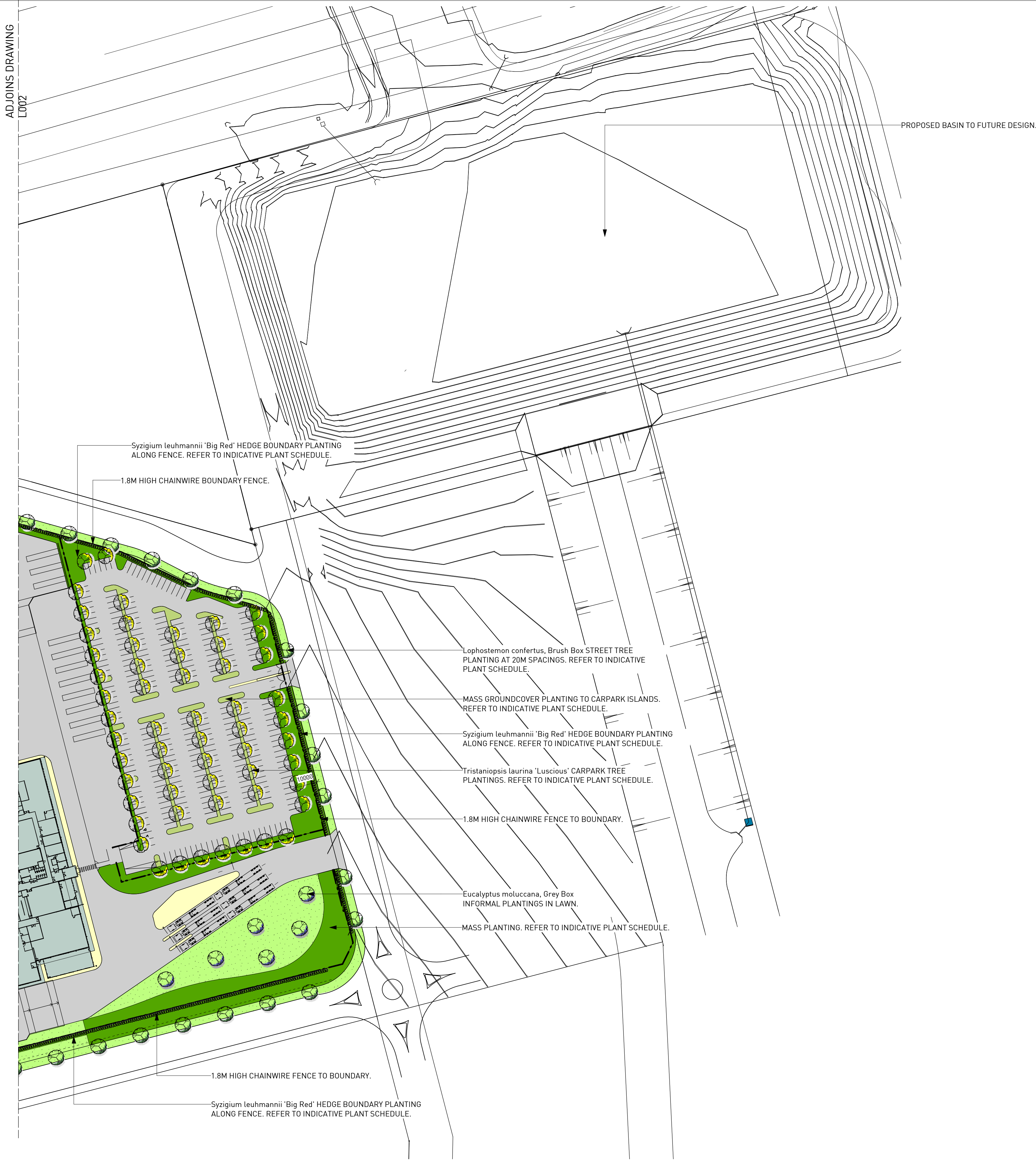




CLIENT	MIRVAC
PROJECT ADDRESS	HOXTON PARK REDEVELOPMENT
LOCATION	
DRAWING TITLE	Authority Approval
ORIGINAL MEDIA SIZE	A1
PLOT TIME	12.02.10
STATUS	d

[www.habitation.com.au](http://www.habitation.com.au)





- KEY
- CARPARK SHADE TREE- *Tristaniopsis laurina* 'Luscious', Water Gum.
  - STREET TREE- *Lophostemon confertus*, Brush Box.
  - SHADE TREE- *Eucalyptus moluccana*, Grey Box.
  - PAVED SURFACE. REFER TO ARCHITECTS DWGS.
  - TURF.
  - MASS SHRUB PLANTING.
  - MASS GROUNDCOVER PLANTING.
  - HYDROSEEDDED GRASS. TO FUTURE SPECIFICATION.
  - DETENTION BASIN PLANTING- GROUP 1.
  - DETENTION BASIN PLANTING- GROUP 2.
  - DETENTION BASIN PLANTING- GROUP 3.
  - MASS PLANTING TO FUTURE DRAINAGE CULVERT.

NOTE:  
EXISTING TREES TO BE REMOVED AND RETAINED TBC.

REVISED PART 3A ISSUE	SM	12.02.10	C
PART 3A ISSUE	SM	09.02.10	B
PURPOSE OF ISSUE	REVIEW	DATE	ISSUE

LANDSCAPE PLAN 01  
SCALE 1:1000 @ A1

CLIENT	MIRVAC
PROJECT ADDRESS	HOXTON PARK REDEVELOPMENT
LOCATION	
DRAWING TITLE	Authority Approval
ORIGINAL MEDIA SIZE	A1
PLOT TIME	12.02.10
STATUS	C

Architects work is subject to Copyright. Documents should not be used contrary to the purpose of the issue without written permission from Habitation.  
NEVER scale off drawings, use figured dimensions only

www.habitation.com.au



INDICATIVE PLANT SCHEDULE

BOTANICAL NAME	COMMON NAME	HEIGHT x SPREAD	POT SIZE	DENSITY
GENERAL PLANTING				
TREES				
Callistemon viminalis	Weeping Bottlebrush	15m x 10m	45L	As shown
Eucalyptus crebra	Narrow Leaved Ironbark	20m x 15m	45L	As shown
Eucalyptus haemastoma	Scribbly Gum	15m x 10m	45L	As shown
Eucalyptus moluccana	Grey Box	20m x 15m	45L	As shown
Lophostemon confertus	Brush Box	15m x 10m	45L	As shown
Waterhousia floribunda	Weeping Lily Pily	8m x 5m	45L	As shown

SHRUBS AND HEDGES				
Bursaria spinosa	Blackthorn	2m x 2m	200mm	1/m2
Callistemon 'Captain Cook'	Bottlebrush	2m x 2m	200mm	1/m2
Correa reflexa	Native Fuschia	1m x 1m	200mm	1/m2
Doryanthes excelsa	Gymea Lily	2m x 2m	200mm	1/m2
Grevillea 'Robyn Gordon'	Grevillea	2m x 2m	200mm	1/m2
Syzygium leuhmanii	Lily Pily	5m x 3m	200mm	1/m2

GROUNDCOVERS AND NATIVE GRASSES				
Billardiera scandens	Apple Berry	0.3m x 2m	150mm	3/m2
Dianella revoluta	Paroo Lily	1m x 1m	150mm	3/m2
Hardenbergia violacaeae	False Sarsparilla	0.3m x 2m	150mm	3/m2
Hibbertia scandens	Guinea Flower	0.3m x 2m	150mm	3/m2
Lomandra longifolia	Mat Rush	1m x 1m	150mm	3/m2

CARPARK PLANTING

TREES				
Tristaniopsis laurina	Water Gum	8m x 5m	45L	As shown

GROUNDCOVERS AND NATIVE GRASSES				
Dianella revoluta	Paroo Lily	1m	150mm	3/m2
Hardenbergia violacaeae	False Sarsparilla	0.3m	150mm	3/m2
Lomandra longifolia	Mat Rush	1m	150mm	3/m2

CULVERT PLANTING

TREES				
Casuarina glauca	Swamp Oak	12m x 8m	200mm	1/5m2
Eucalyptus moluccana	Grey Box	20m x 15m	200mm	1/5m2
Eucalyptus tereticornis	Forest Red Gum	20m x 15m	200mm	1/5m2

SHRUBS				
Acacia decurrens	Black Wattle	2m x 2m	viro tube	1/2m2
Bursaria spinosa	Blackthorn	2m x 2m	viro tube	1/2m2
Dillwynia sieberi	Prickly Parrot Pea	2m x 2m	viro tube	1/2m2

GROUNDCOVERS AND NATIVE GRASSES				
Baumea articulata	Jointed Twigrush	1m x 1m	viro tube	4/m2
Carex appressa	Tussock Sedge	1m x 1m	viro tube	4/m2
Dianella longifolia	Flax Lily	1m x 1m	viro tube	4/m2
Juncus usitatus	Common Rush	1m x 1m	viro tube	4/m2
Lomandra longifolia	Mat Rush	1m x 1m	viro tube	4/m2

DETENTION BASIN PLANTING

GROUP ONE PLANTING

TREES				
Casuarina glauca	Swamp Oak	12m x 8m	200mm	1/5m2
Eucalyptus moluccana	Grey Box	20m x 15m	200mm	1/5m2
Eucalyptus tereticornis	Forest Red Gum	20m x 15m	200mm	1/5m2

SHRUBS				
Acacia decurrens	Black Wattle	2m x 2m	viro tube	1/2m2
Bursaria spinosa	Blackthorn	2m x 2m	viro tube	1/2m2
Dillwynia sieberi	Prickly Parrot Pea	2m x 2m	viro tube	1/2m2

GROUNDCOVERS AND NATIVE GRASSES				
Carex appressa	Tussock Sedge	1m x 1m	viro tube	4/m2
Dianella longifolia	Flax Lily	1m x 1m	viro tube	4/m2
Lomandra longifolia	Mat Rush	1m x 1m	viro tube	4/m2

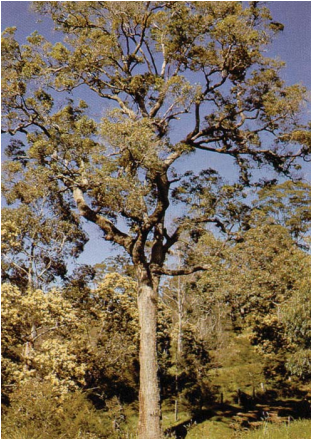
GROUP TWO PLANTING

GROUNDCOVERS AND NATIVE GRASSES				
Carex appressa	Tussock Sedge	1m x 1m	viro tube	4/m2
Dianella longifolia	Flax Lily	1m x 1m	viro tube	4/m2
Juncus usitatus	Common Rush	1m x 1m	viro tube	4/m2
Lomandra longifolia	Mat Rush	1m x 1m	viro tube	4/m2

GROUP THREE PLANTING

GROUNDCOVERS AND NATIVE GRASSES				
Baumea articulata	Jointed Twigrush	1m x 1m	viro tube	4/m2
Juncus usitatus	Common Rush	1m x 1m	viro tube	4/m2
Phragmites australis	Rush	1m x 1m	viro tube	4/m2

T  
R  
E  
E  
S



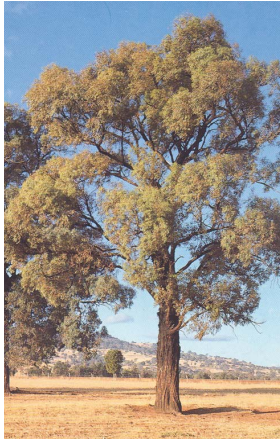
Angophora floribunda



Callistemon viminalis



Casuarina glauca



Eucalyptus crebra



Eucalyptus haemastoma



Eucalyptus moluccana



Eucalyptus tereticornis



Lophostemon confertus



Tristaniopsis laurina



Waterhousia floribunda

S  
H  
R  
U  
B  
S



Acacia decurrens



Acacia floribunda



Breyenia oblongifolia



Bursaria spinosa



Callistemon 'Captain Cook'



Correa reflexa



Dillwynia sieberi



Doryanthes excelsa



Grevillea 'Robyn Gordon'



Melaleuca decora



Melaleuca linariifolia



Syzygium leuhmanii

G  
/  
C  
O  
V  
E  
R  
S



Baumea articulata



Billardiera scandens



Carex appressa



Dianella longifolia



Hardenbergia violacea



Juncus usitatus



Lomandra longifolia



Microlaena stipoides



Phragmites australis



Themeda australis

REVISED PART 3A ISSUE	SM	12.02.10	C
PART 3A ISSUE	SM	09.02.10	B
PURPOSE OF ISSUE	REVIEW	DATE	ISSUE

INDICATIVE PLANT SPECIES

CLIENT PROJECT ADDRESS LOCATION	MIRVAC HOXTON PARK REDEVELOPMENT
DRAWING TITLE	Authority Approval
ORIGINAL MEDIA SIZE	A1
PLOT TIME	12.02.10
STATUS	C

Architects work is subject to Copyright. Documents should not be used contray to the purpose of the issue without written permission from Habitation. NEVER scale off drawings, use figured dimensions only



SPECIFICATION NOTES

SERVICES  
Before landscape work is commenced the Landscape Contractor is to establish the position of all service lines and ensure tree planting is carried out at least 3 metres away from these services. Service lids, vents and hydrants shall be left exposed and not covered by any landscape finishes (turfing, paving, garden beds etc.) Finish adjoining surfaces flush with pit lids.

PLANTING MIXTURE  
Shall be homogenous blend of soil and additives in the following proportions:  
Imported Topsoil 50%  
Compost 30%  
D/W Sand 20%

MULCH  
APPLICATION: Place mulch to the required depth, (refer to drawings) clear of plant stems, and rake to an even surface finishing 25mm below adjoining levels. Ensure mulch is watered in and tamped down during installation.  
MULCH TYPE: Hardwood chip: 25mm size brown hardwood chips from purpose grown hardwood plantations.

COMPOST  
Shall be well rotted vegetative material or animal manure, or other approved material, free from harmful chemicals, grass and weed growth and with neutral pH. Provide a certificate of proof of pH upon request.

PLANT MATERIAL  
All plants supplied are to conform with those species listed in the Plant Schedule on the drawings. Generally plants shall be vigorous, well established, hardened off, of good form consistent with species or variety, not soft or forced, free from disease or insect pests with large healthy root systems and no evidence of having been restricted or damaged. Trees shall have a leading shoot. Immediately reject dried out, damaged or unhealthy plant material before planting. All stock is to be container grown for a minimum of six (6) months prior to delivery to site.

FERTILISER  
MASS PLANTING AREAS: Fertiliser shall be 'Nutricote' or approved equivalent in granule form intended for slow release of plant nutrients over a period of approximately nine months. Thoroughly mix fertiliser with planting mixture at the recommended rate, prior to installing plants.  
TURF: Shall be Shirleys No. 17 or approved equal thoroughly mixed into the topsoil prior to placing turf.  
TREES IN GRASS AND SUPER ADVANCED TREES: Pellets shall be in the form intended to uniformly release plant food elements for a period of approximately nine months equal to Shirleys Kokei pellets, analysis 6.3:1.8:2.9. Kokei pellets shall be placed at the time of planting to the base of the plant, 50mm minimum from the root ball at a rate of two pellets per 300mm of top growth to a maximum of 8 pellets per tree.

STAKING AND TYING  
Stakes shall be straight hardwood, free from knots and twists, pointed at one end and sized according to size of plants to be staked.  
a. 5-15 litre size plant 1x(1200x25x25mm)  
b. 35-75 litre size plant 2x(1500x38x38mm)  
c. 100-greater than 200litre 3x(1800x50x50mm)  
Ties shall be 50mm wide hessian webbing or approved equivalent nailed or stapled to stake. Drive stakes a minimum one third of their length, avoiding damage to the root system, on the windward side of the plant.

TURF  
Obtain turf from a specialist grower of cultivated turf. turf shall be of even thickness, free from weeds and other foreign matter; lay in stretcher pattern with joints staggered and close butted. Water immediately after laying.  
TURF TYPE: Kikuyu

LANDSCAPE MAINTENANCE PROGRAM

Maintenance shall mean the care and maintenance of the landscape works by accepted horticultural practice as rectifying any defects that become apparent in the landscape works under normal use. This shall include, but shall not be limited to, watering, mowing, fertilising, reseeding, returfing, weeding, pest and disease control, staking and tying, replanting, cultivation, pruning, aerating, renovating, top dressing, maintaining the site in a neat and tidy condition as follows:-

GENERAL  
The landscape contractor shall maintain the landscape works for the term of the maintenance (or Plant establishment) period to the satisfaction of the council. The landscape contractor shall attend to the site on a weekly basis. The maintenance period shall commence at practical completion and continue for a period of twenty six (26) weeks.

WATERING  
Grass, trees and garden areas shall be watered regularly so as to ensure continuous healthy growth.

RUBBISH REMOVAL  
During the term of the maintenance period the landscape contractor shall remove rubbish that may occur and reoccur throughout the maintenance period. This work shall be carried out regularly so that at weekly intervals the area may be observed in a completely clean and tidy condition.

REPLACEMENTS  
The landscape contractor shall replace all plants that are missing, unhealthy or dead at the Landscape Contractor's cost. Replacements shall be of the same size, quality and species as the plant that has failed unless otherwise directed by the Landscape Architect. Replacements shall be made on a continuing basis not exceeding two (2) weeks after the plant has died or is seen to be missing.

STAKES AND TIES  
The landscape contractor shall replace or adjust plant stakes, and tree guards as necessary or as directed by the Landscape Architect. Remove stakes and ties at the end of the maintenance period if so directed.

PRUNING  
Trees and shrubs shall be pruned as directed by the Landscape Architect. Pruning will be directed at the maintenance of the dense foliage or miscellaneous pruning and beneficial to the condition of the plants. Any damaged growth shall be pruned. All pruned material shall be removed from the site.

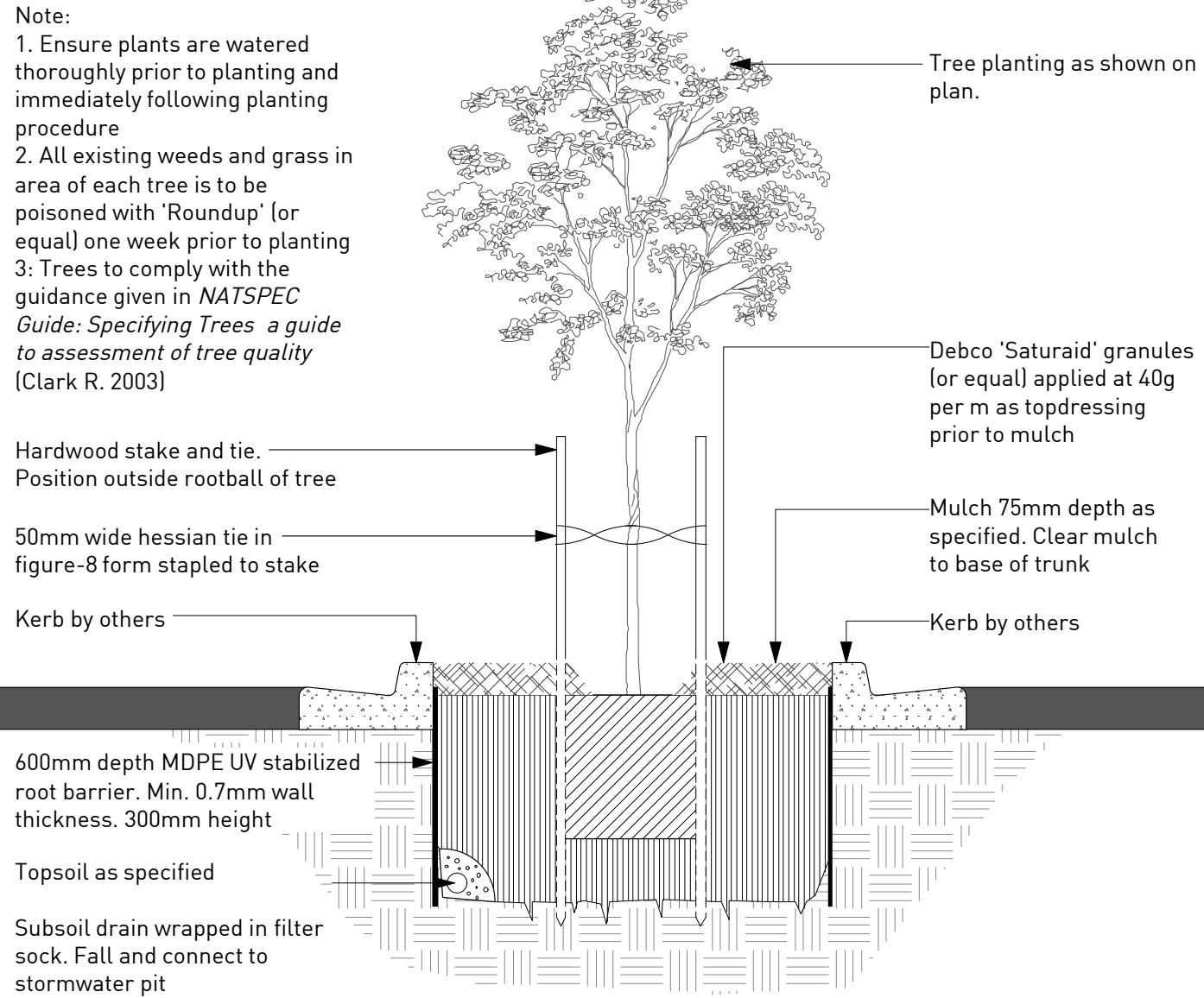
MULCHED SURFACES  
All mulched surfaces shall be maintained in a clean and tidy condition and be reinstated if necessary to ensure that a depth of 75mm is maintained. Ensure mulch is kept clear of plant stems at all times.

PEST AND DISEASE CONTROL  
The landscape contractor shall spray against insect and fungus infestation with all spraying to be carried out in accordance with the manufacturer's directions. Report all instances of pests and diseases (immediately that they are detected) to the Landscape Architect.

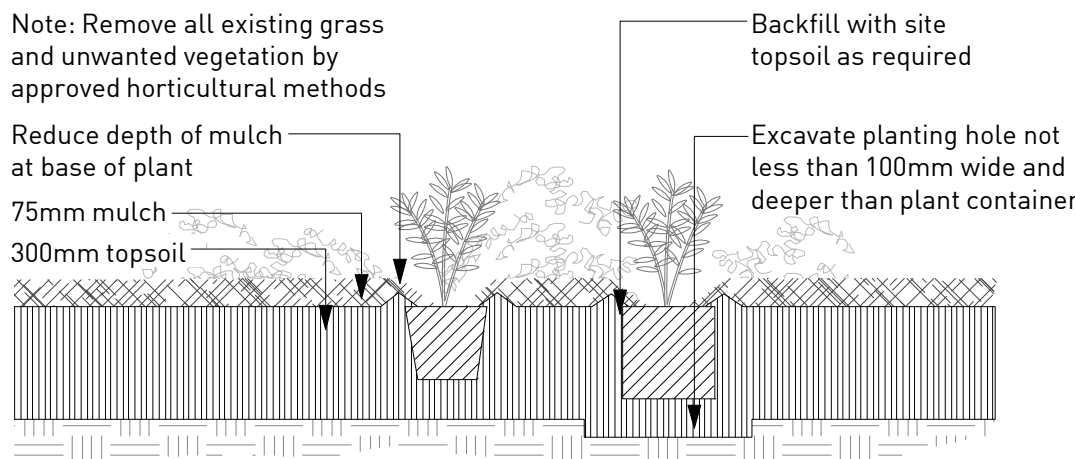
GRASS AND TURF AREAS  
The landscape contractor shall maintain all grass and turf areas by watering, weeding, reseeding, rolling, mowing, trimming or other operations as necessary. Seed and turf species shall be the same as the original specified mixture. Grass and turf areas shall be sprayed with approved selective herbicide against broad leafed weeds as required by the Landscape Architect and in accordance with the manufacturer's directions. Grass and turf areas shall be fertilised once a year in autumn with "Dynamic Lifter" for lawns at a rate of 20kg per 100m2. Fertiliser shall be watered in immediately after application. Irregularities in the grass and turf shall be watered in immediately after application. Grass and turf areas shall be kept mown to maintain a healthy and vigorous sward. Mowing height: 30-50mm.

WEED ERADICATION  
Eradicate weeds by environmentally acceptable methods using a non-residual glyphosate herbicide (eg. 'Roundup') in any of its registered formulae, at the recommended maximum rate. Regularly remove by hand, weed growth that may occur or recur throughout grassed, planted and mulched areas. Remove weed growth from an area 750mm diameter around the base of trees in grassed areas. Continue eradication throughout the course of the works and during the maintenance period.

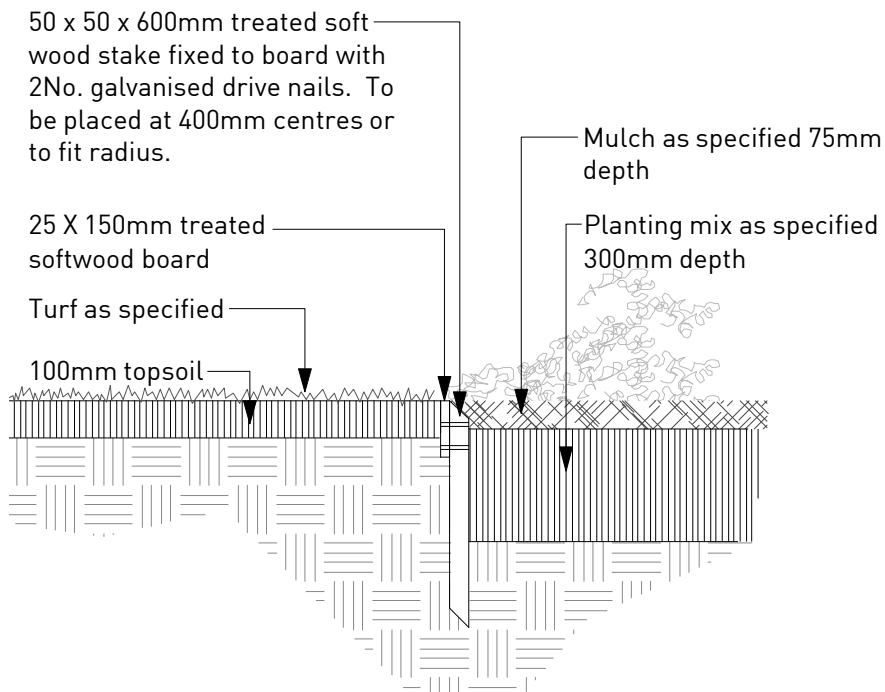
SOIL SUBSIDENCE  
Any soil subsidence or erosion which may occur after the soil filling and preparation operations shall be made good by the landscape contractor at no cost to the client.



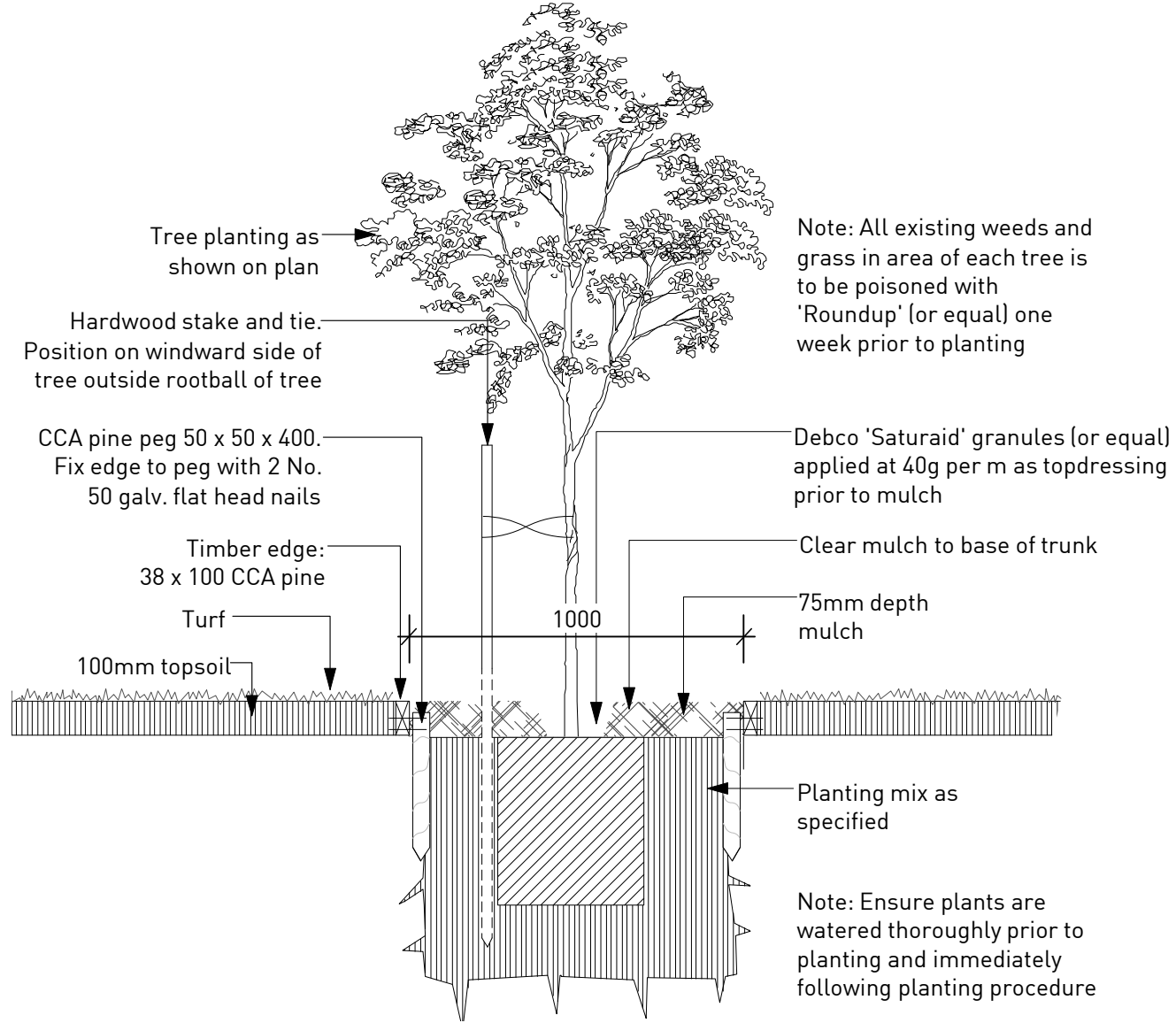
01 TREE PLANTING IN CARPARK  
DETAIL 1:20 @ A1



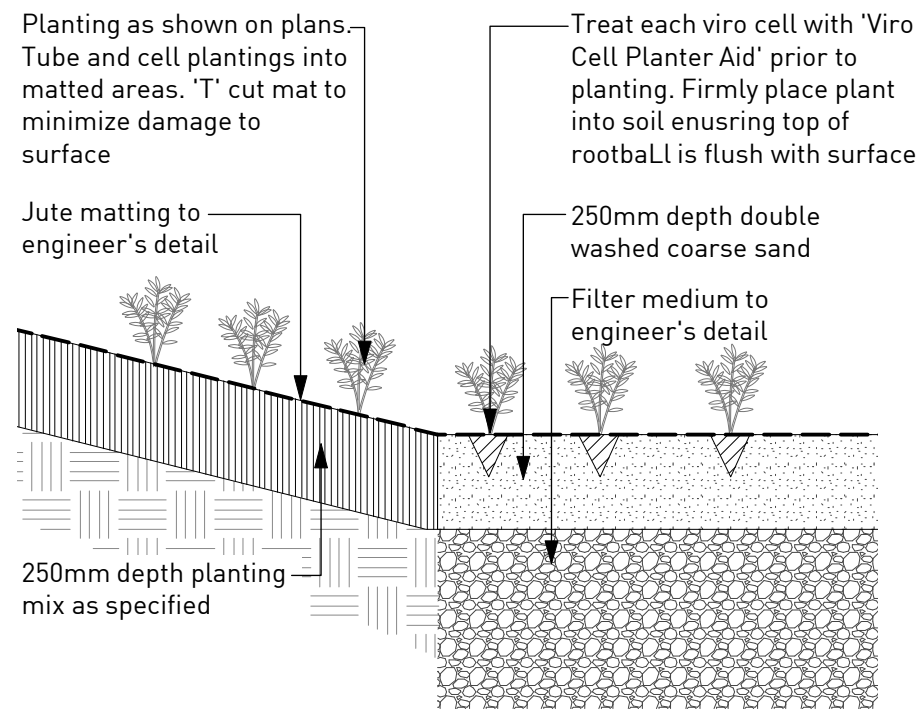
03 SHRUB / GROUND COVER PLANTING  
DETAIL 1:20 @ A1



04 TURF / TIMBER EDGE  
DETAIL 1:20 @ A1



02 TREE PLANTING IN TURF  
DETAIL 1:20 @ A1



05 DETENTION BASIN PLANTING  
DETAIL 1:20 @ A1

REVISED PART 3A ISSUE	SM	12.02.10	A
PURPOSE OF ISSUE	REVIEW	DATE	ISSUE

LANDSCAPE DETAILS

CLIENT	MIRVAC
PROJECT ADDRESS	HOXTON PARK REDEVELOPMENT
LOCATION	
DRAWING TITLE	Authority Approval
ORIGINAL MEDIA SIZE	A1
PLOT TIME	12.02.10
STATUS	A

Architects work is subject to Copyright. Documents should not be used contrary to the purpose of the issue without written permission from Habitation. NEVER scale off drawings, use figured dimensions only