

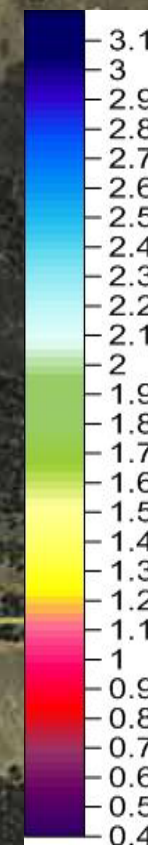
# Cobbora: Mates towed TEM Depth Slice

Resistivity at the specified depth in the smoothed  
1D model used to fit the TEM data.

Surveyed and processed by  
Groundwater Imaging P/L  
October 2011

**Lineaments**  
: Shallow  
: Deep

1m



Resistivity  
(log10(Ohm.m))

1558 m

© 2011 Cnes/Spot Image  
© 2011 Whereis® Sensis Pty Ltd

lat -32.099062° lon 149.189798° elev 349 m

©2010 Google


Eye alt 6.39 km


# Cobbora: Mates towed TEM Depth Slice

Resistivity at the specified depth in the smoothed  
1D model used to fit the TEM data.

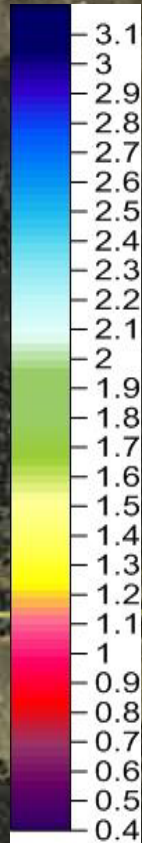
Surveyed and processed by  
Groundwater Imaging P/L  
October 2011

**Lineaments**

 : Shallow

 : Deep

3m



Resistivity  
(log10(Ohm.m))


# Cobbora: Mates towed TEM Depth Slice


Resistivity at the specified depth in the smoothed  
1D model used to fit the TEM data.

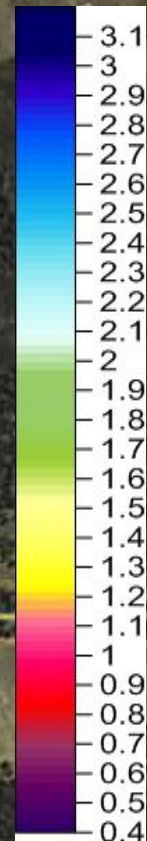
Surveyed and processed by  
Groundwater Imaging P/L  
October 2011

7m

**Lineaments**

 : Shallow

 : Deep



Resistivity  
(log10(Ohm.m))

1558 m

© 2011 Cnes/Spot Image  
© 2011 Whereis® Sensis Pty Ltd

lat -32.099062° lon 149.189798° elev 349 m

©2010 Google

Eye alt 6.39 km


# Cobbora: Mates towed TEM Depth Slice


Resistivity at the specified depth in the smoothed  
1D model used to fit the TEM data.

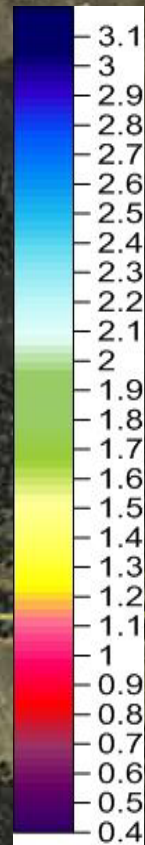
Surveyed and processed by  
Groundwater Imaging P/L  
October 2011

12m

**Lineaments**

 : Shallow

 : Deep



Resistivity  
(log10(Ohm.m))

# Cobbora: Mates towed TEM Depth Slice

Resistivity at the specified depth in the smoothed  
1D model used to fit the TEM data.

Surveyed and processed by  
Groundwater Imaging P/L  
October 2011

20m

## Lineaments

 : Shallow

 : Deep



Resistivity  
(log10(Ohm.m))

1558 m

© 2011 Cnes/Spot Image  
© 2011 Whereis® Sensis Pty Ltd

lat -32.099062° lon 149.189798° elev 349 m

©2010 Google

Eye alt 6.39 km


# Cobbora: Mates towed TEM Depth Slice


Resistivity at the specified depth in the smoothed  
1D model used to fit the TEM data.

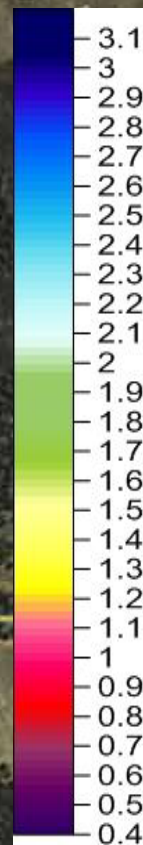
Surveyed and processed by  
Groundwater Imaging P/L  
October 2011

28m

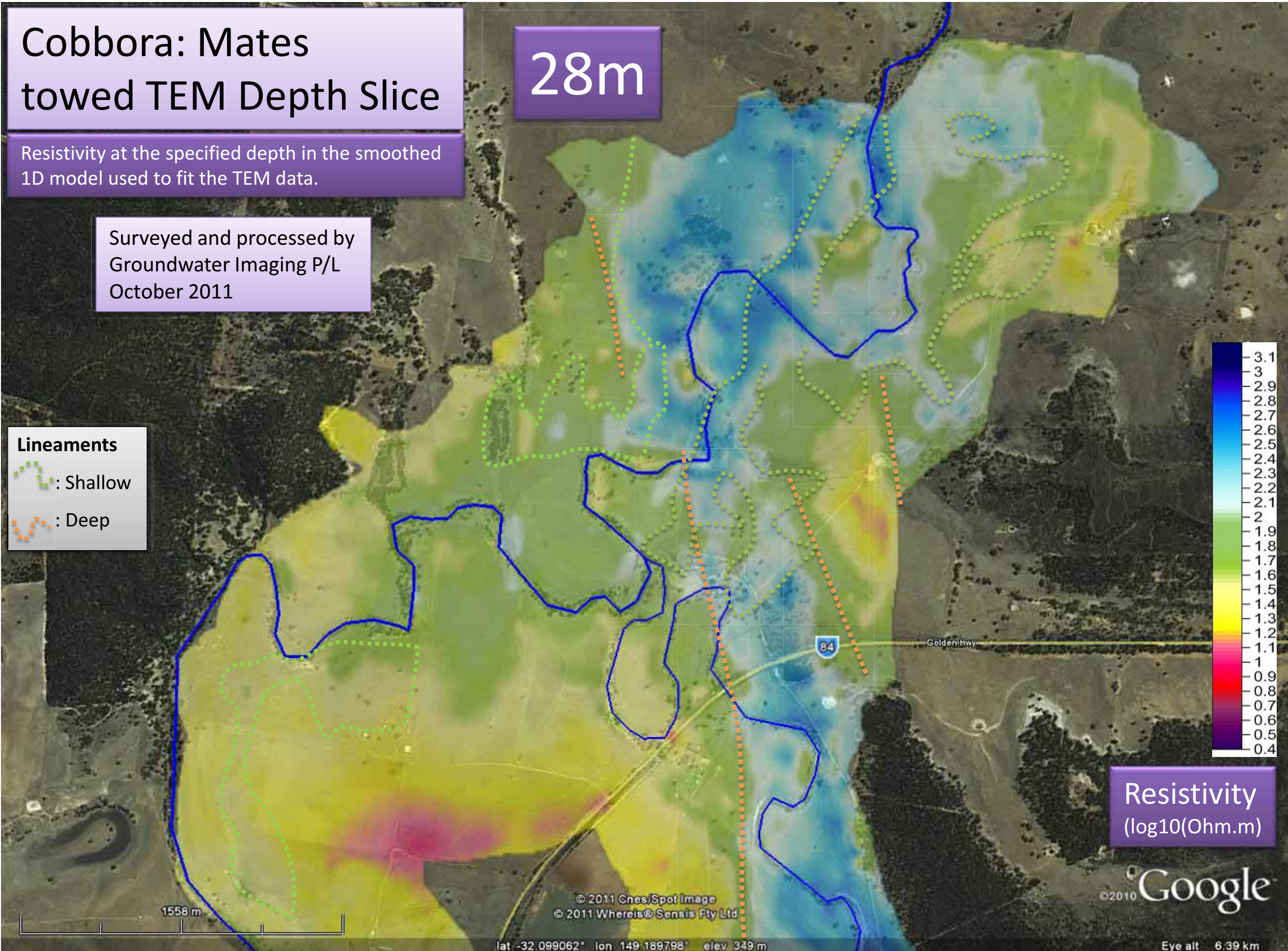
**Lineaments**

 : Shallow

 : Deep



Resistivity  
(log10(Ohm.m))




# Cobbora: Mates towed TEM Depth Slice


Resistivity at the specified depth in the smoothed  
1D model used to fit the TEM data.

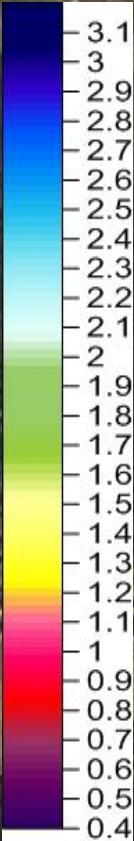
Surveyed and processed by  
Groundwater Imaging P/L  
October 2011

36m

**Lineaments**

 : Shallow

 : Deep



Resistivity  
(log10(Ohm.m))



© 2011 Cnes/Spot Image  
© 2011 Whereis® Sensis Pty Ltd

©2010 Google

lat -32.099062° lon 149.189798° elev 349 m

Eye alt 6.39 km


# Cobbora: Mates towed TEM Depth Slice


Resistivity at the specified depth in the smoothed  
1D model used to fit the TEM data.

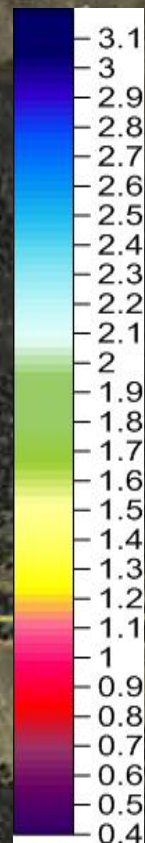
Surveyed and processed by  
Groundwater Imaging P/L  
October 2011

45m

**Lineaments**

 : Shallow

 : Deep



Resistivity  
(log10(Ohm.m))



© 2011 Cnes/Spot Image  
© 2011 Whereis® Sensis Pty Ltd

©2010 Google

lat -32.099062° lon 149.189798° elev 349 m

Eye alt 6.39 km


# Cobbora: Mates towed TEM Depth Slice


Resistivity at the specified depth in the smoothed  
1D model used to fit the TEM data.

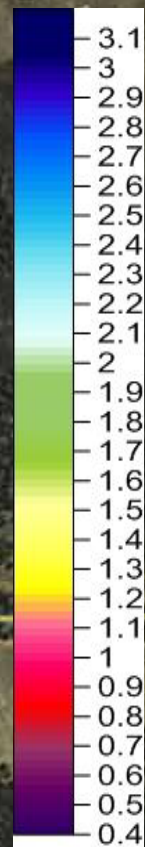
Surveyed and processed by  
Groundwater Imaging P/L  
October 2011

58m

**Lineaments**

 : Shallow

 : Deep



Resistivity  
(log10(Ohm.m))

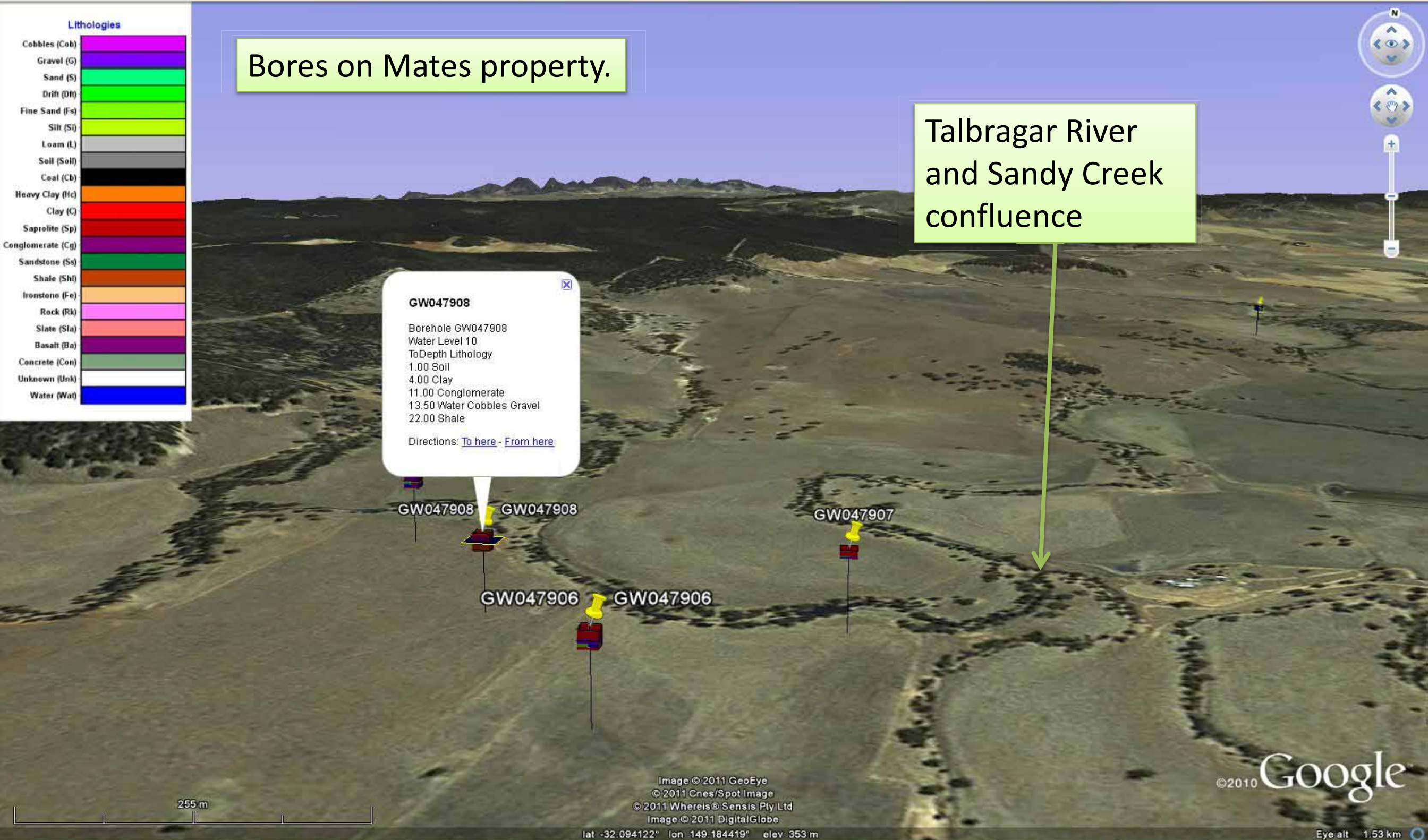
1558 m

© 2011 Cnes/Spot Image  
© 2011 WhereIs® Sensis Pty Ltd

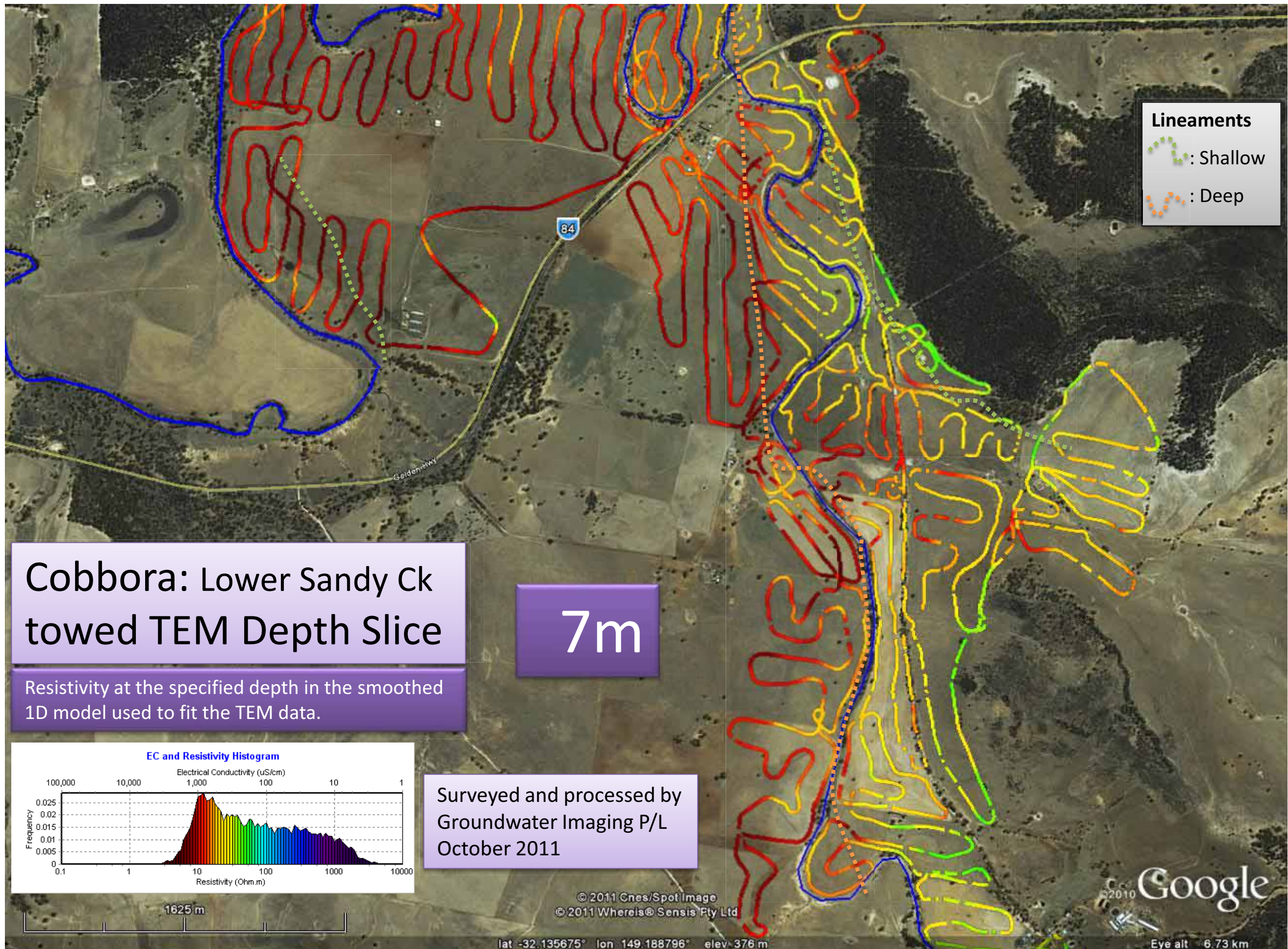
lat -32.099062° lon 149.189798° elev 349 m

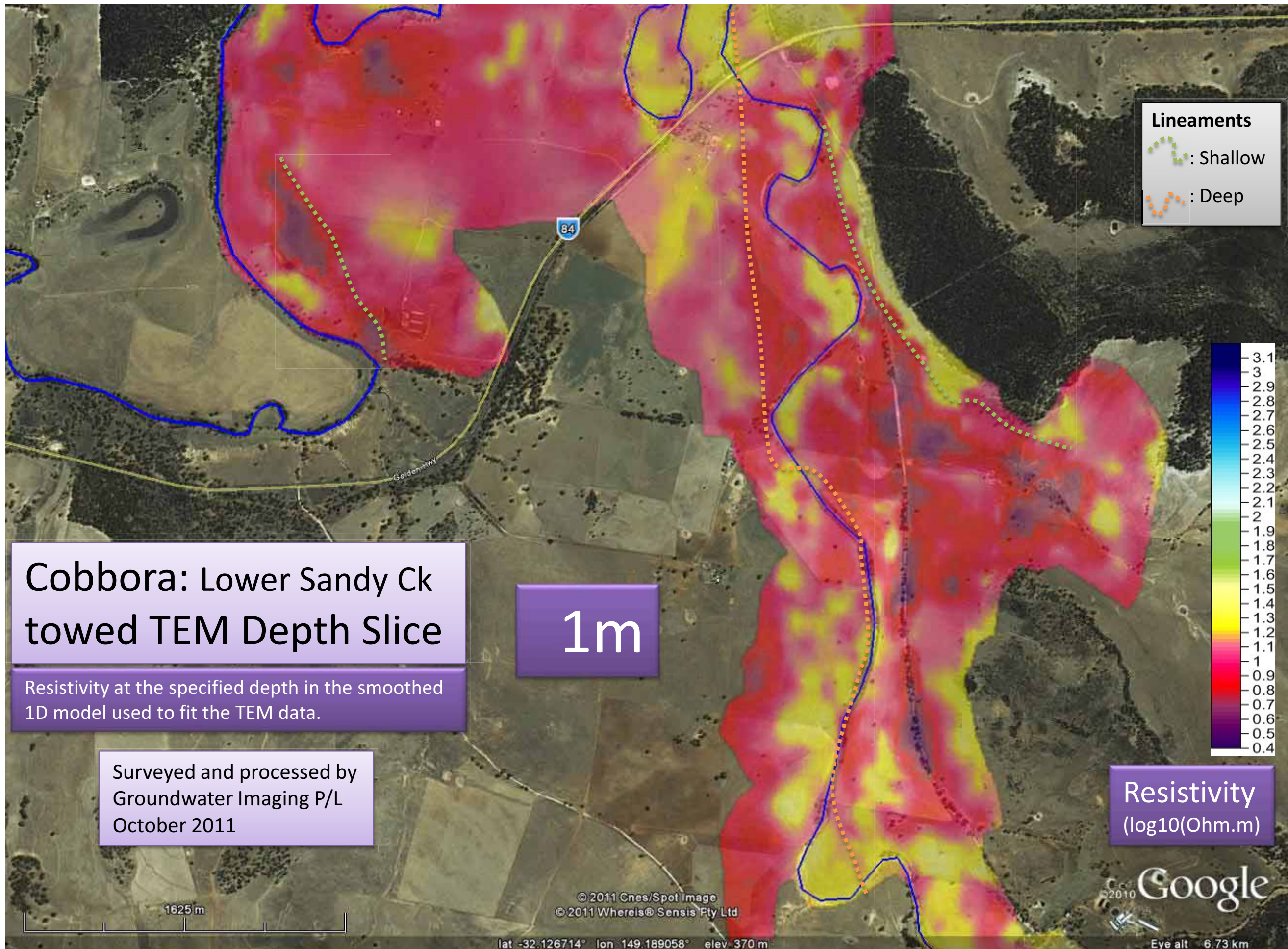
©2010 Google

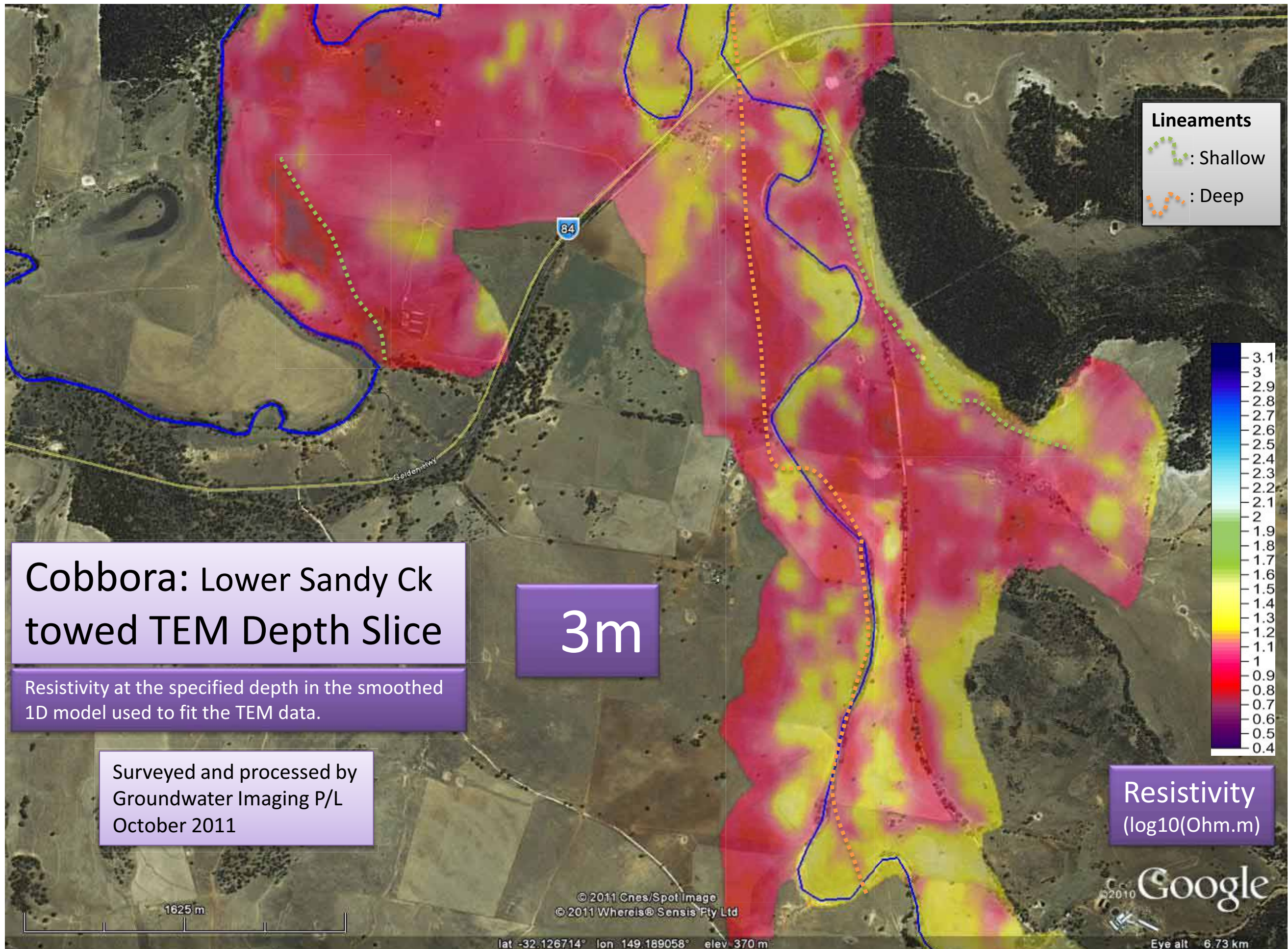
Eye alt 6.39 km

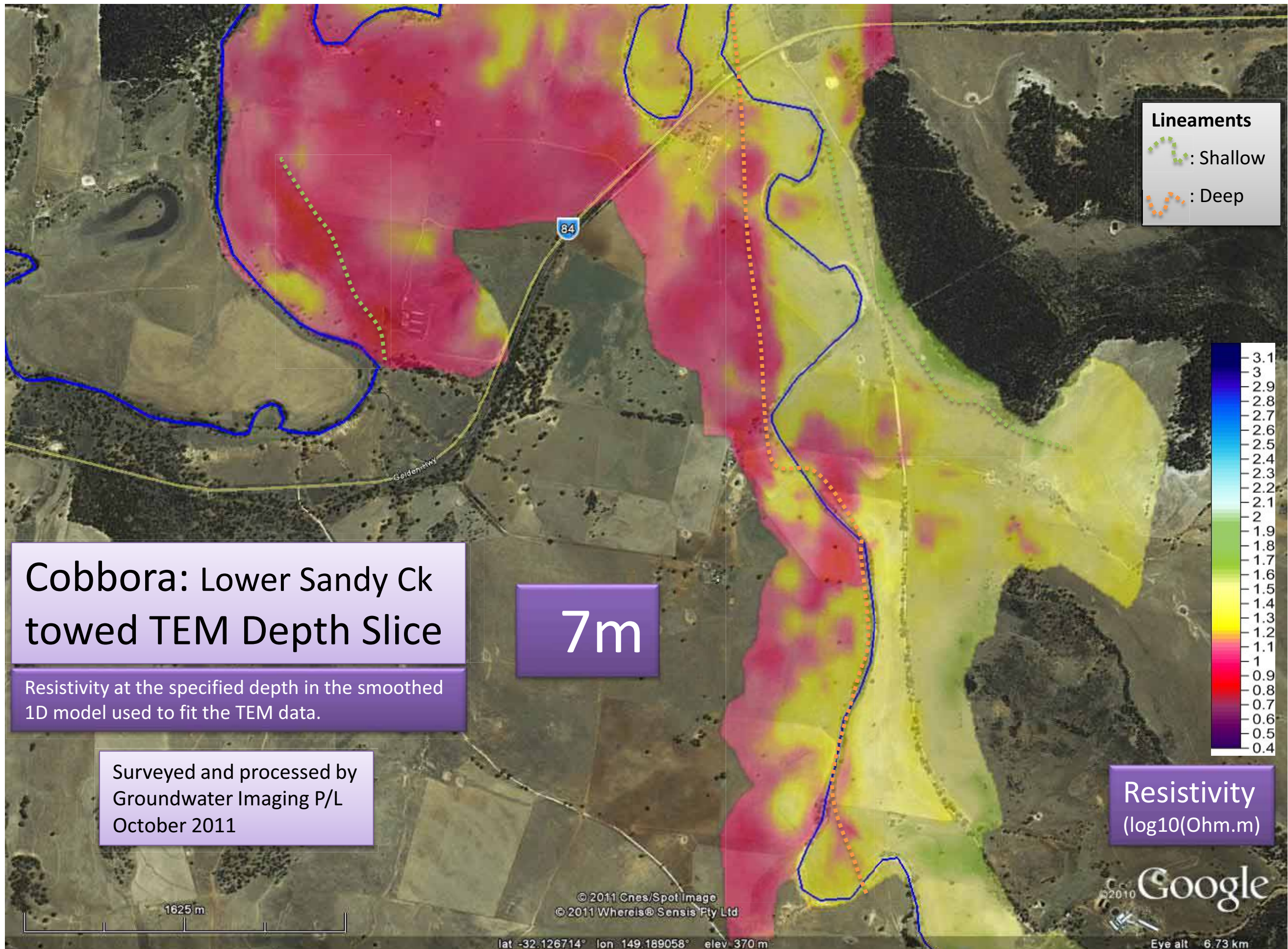


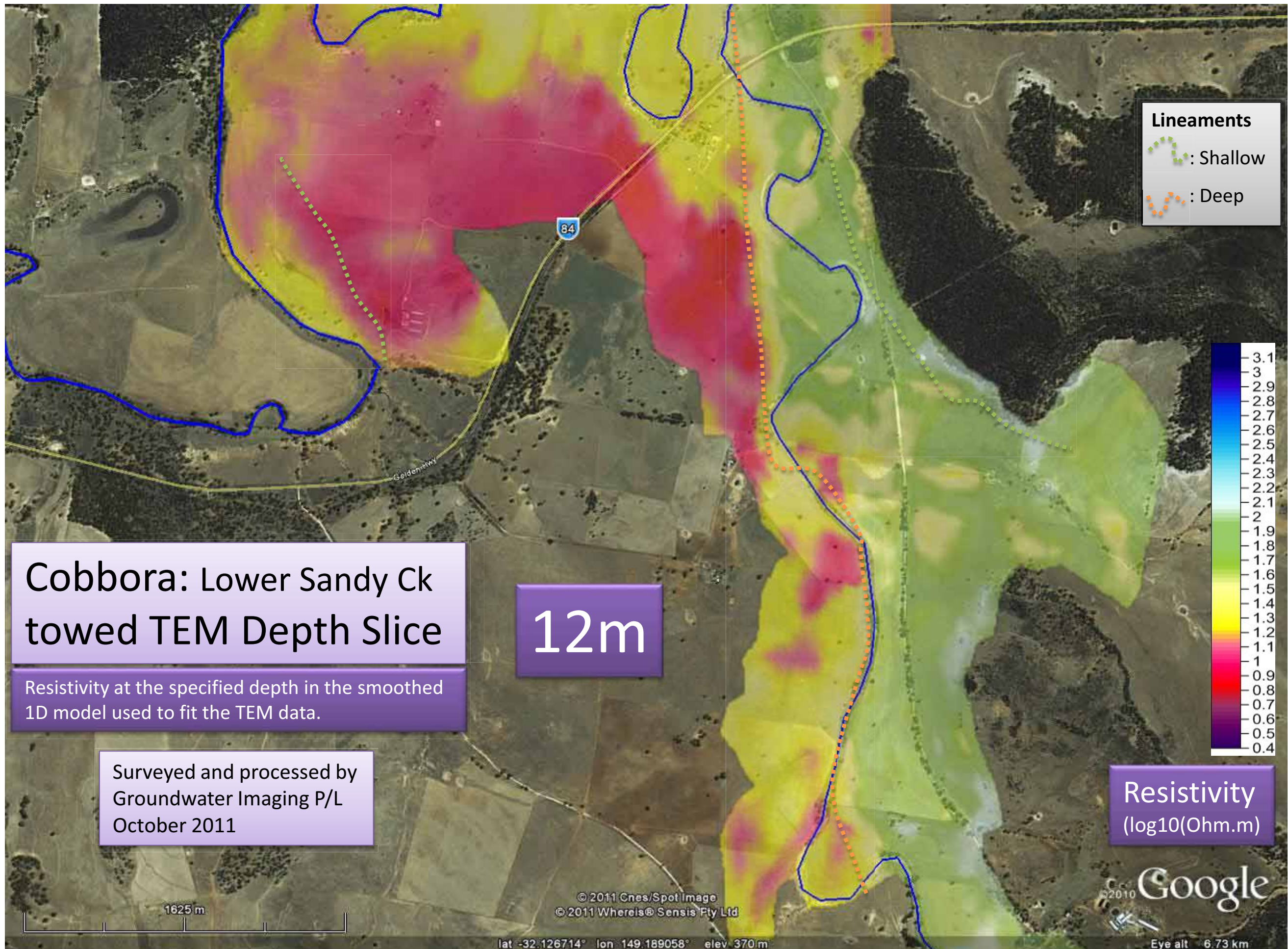
These bores indicate about 4m of clay over course and/or consolidated sediment thought to be weathered pre-quaternary sediment due to its similarity to the coal seam bearing strata.

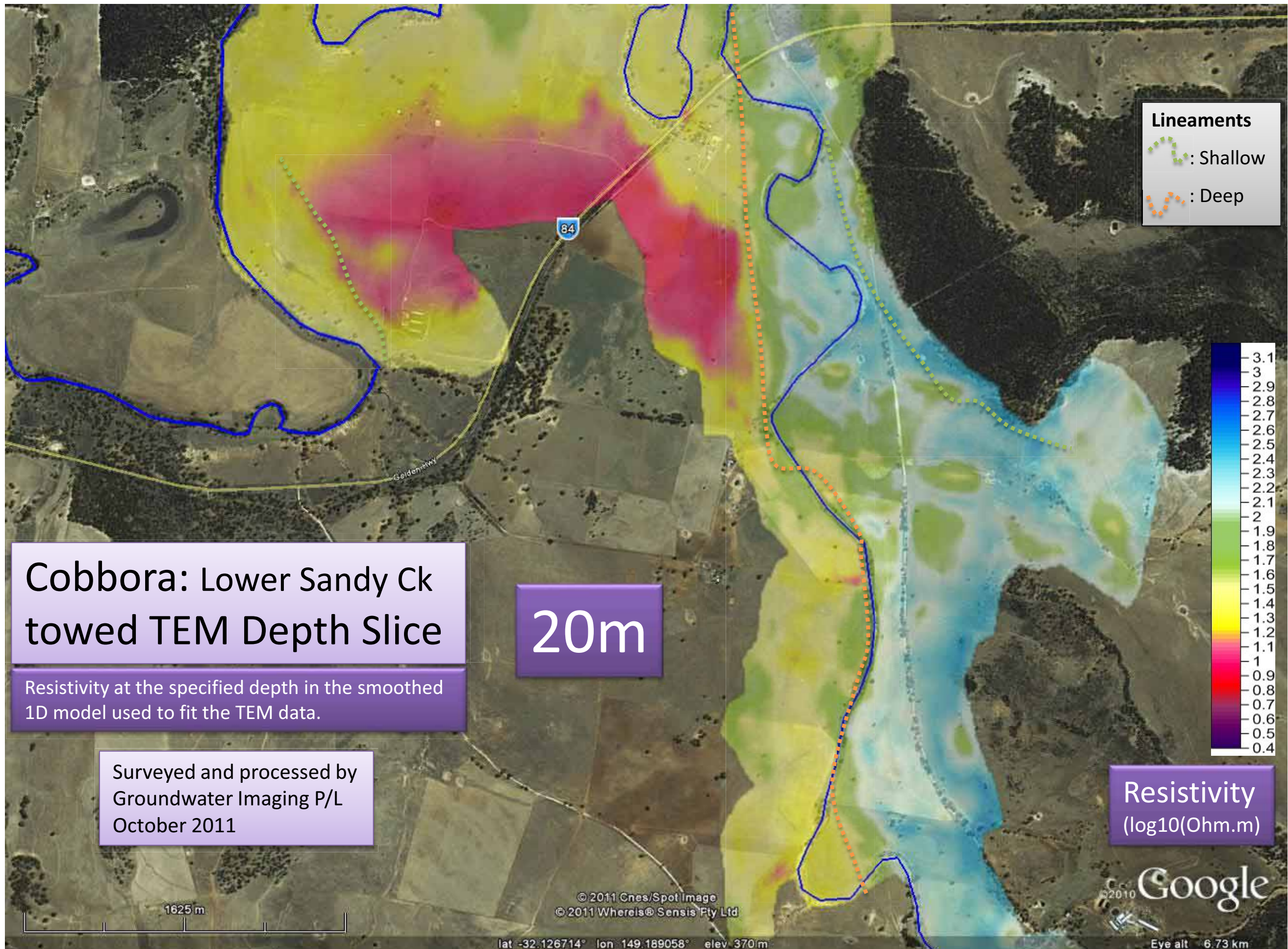


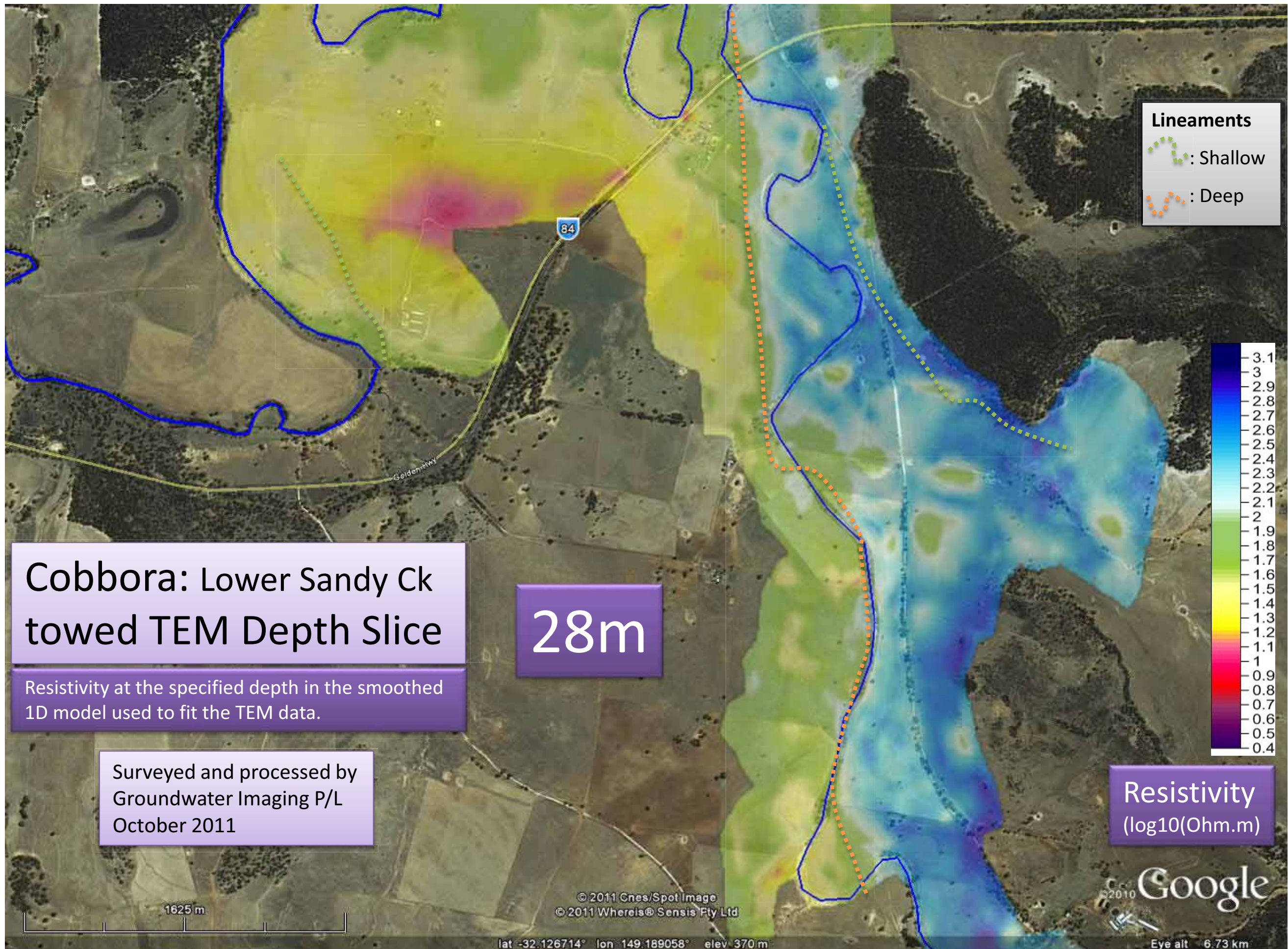


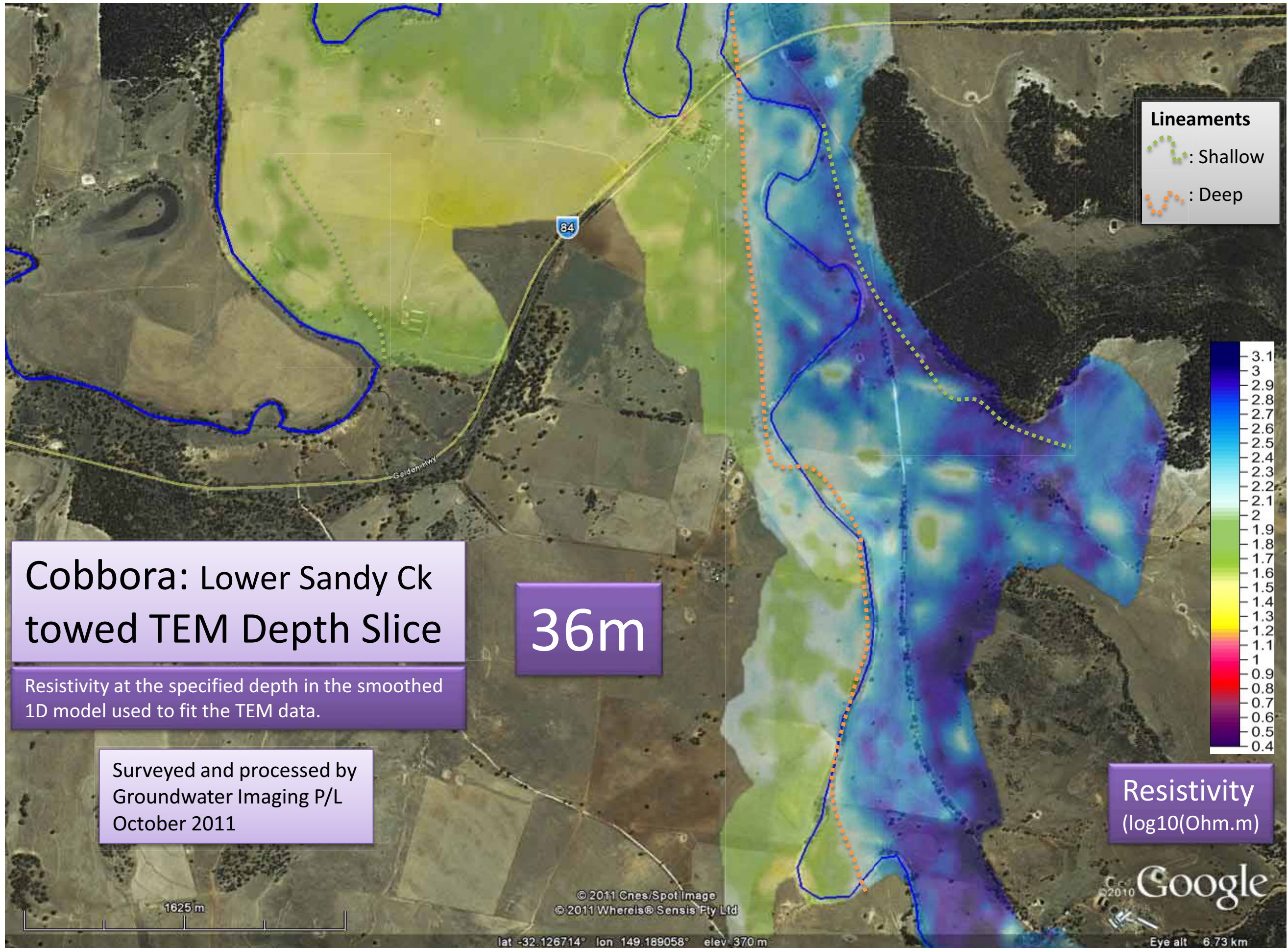








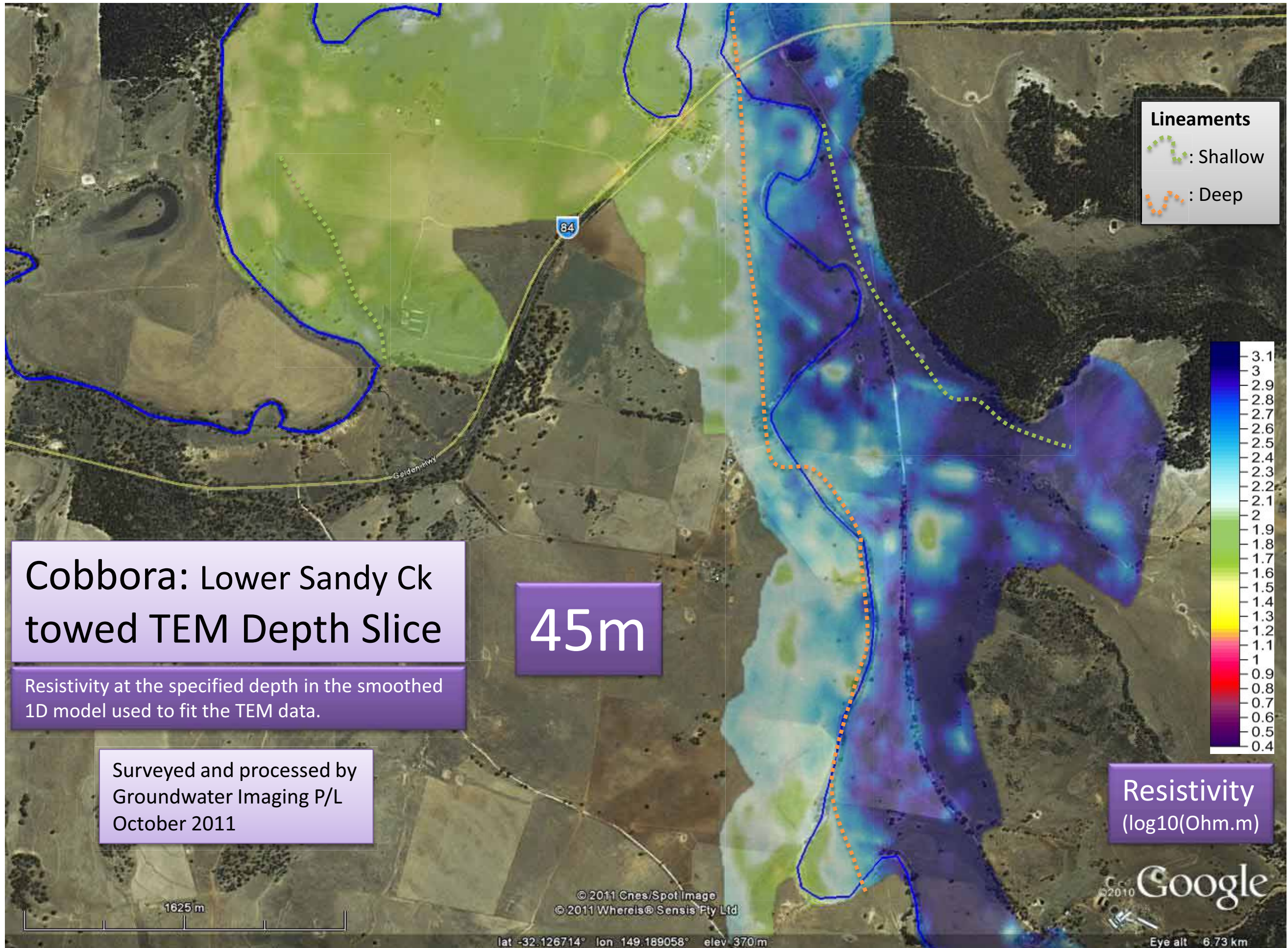





# Cobbora: Lower Sandy Ck towed TEM Depth Slice


Resistivity at the specified depth in the smoothed  
1D model used to fit the TEM data.

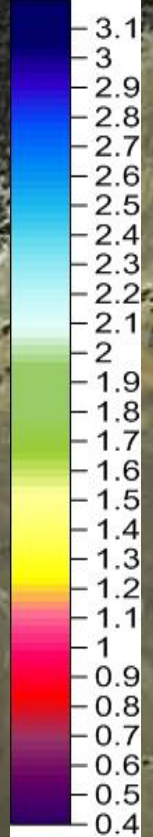
Surveyed and processed by  
Groundwater Imaging P/L  
October 2011



**Lineaments**

 : Shallow

 : Deep



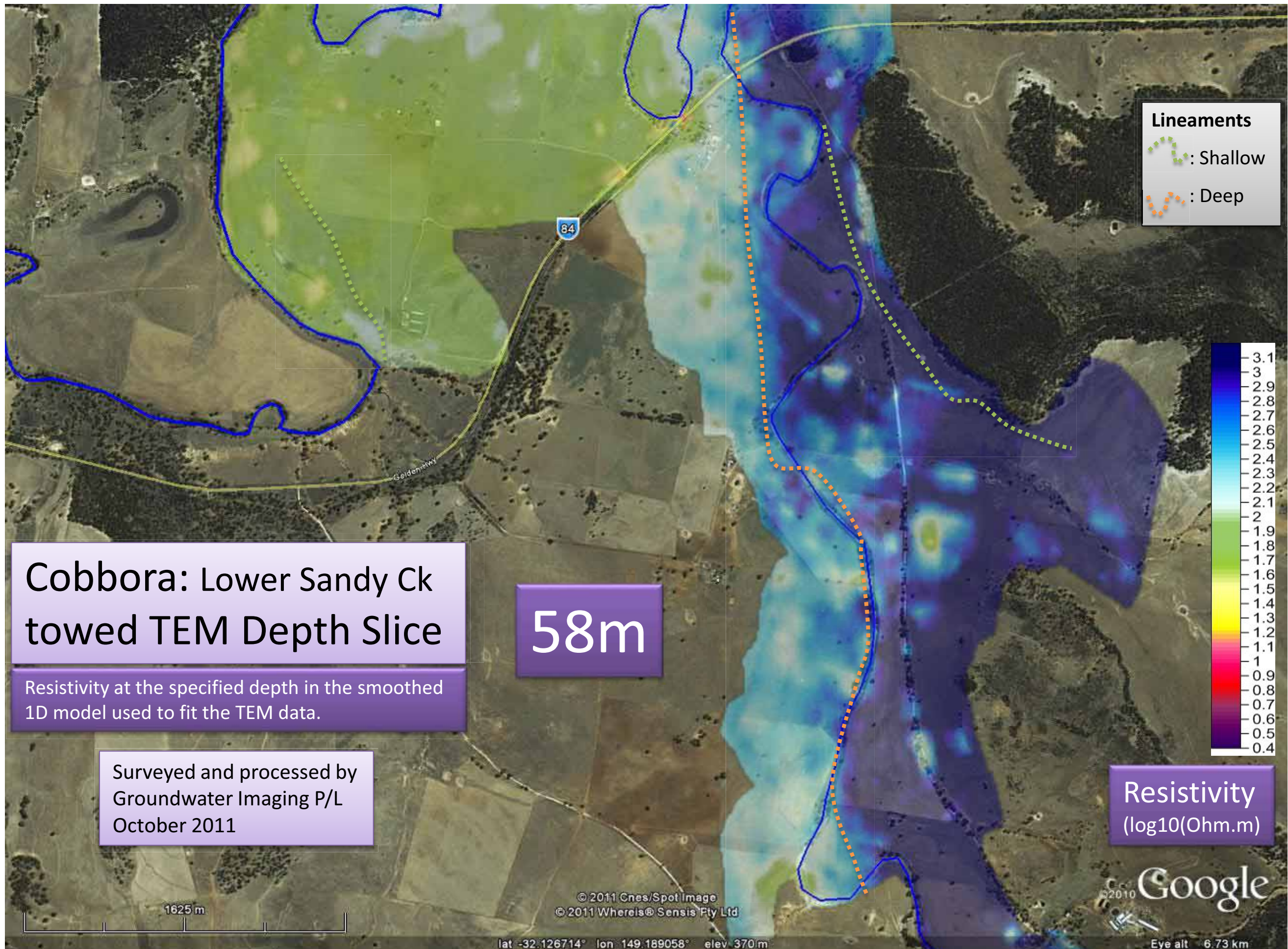
# Cobbora: Lower Sandy Ck towed TEM Depth Slice

Resistivity at the specified depth in the smoothed  
1D model used to fit the TEM data.

Surveyed and processed by  
Groundwater Imaging P/L  
October 2011

45m

Resistivity  
(log10(Ohm.m))



7m

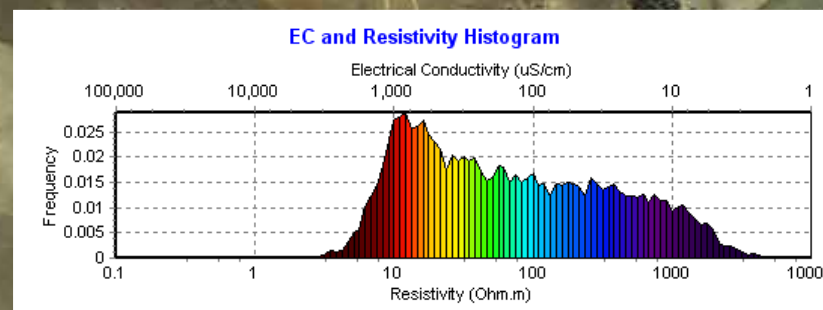
# Cobbora: Upper Sandy Creek and Laheys Creek towed TEM Depth Slice

Resistivity at the specified depth in the smoothed 1D model used to fit the TEM data.

## Lineaments

: Shallow

: Deep



Surveyed and processed by  
Groundwater Imaging P/L  
October 2011

© 2011 Cnes/Spot Image  
© 2011 WhereIs® Sensis Pty Ltd

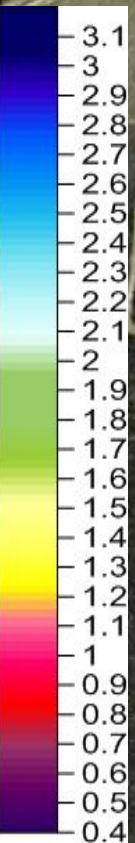
© 2010 Google

Eye alt 7.39 km


1m

# Cobbora: Upper Sandy Creek and Laheys Creek towed TEM Depth Slice

Resistivity at the specified depth in the smoothed 1D model used to fit the TEM data.



## Lineaments

 : Shallow

 : Deep

Resistivity  
(log10(Ohm.m))

Surveyed and processed by  
Groundwater Imaging P/L  
October 2011

©2010 Google

Eye alt 7.39 km

©2011 Cnes/Spot Image  
©2011 WhereIs@Sensis Pty Ltd

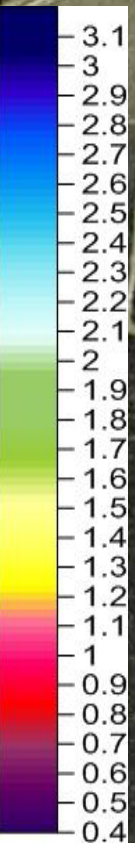
lat -32.169680° lon 149.228998° elev 385 m

1777 m

# Cobbora: Upper Sandy Creek and Laheys Creek towed TEM Depth Slice

Resistivity at the specified depth in the smoothed 1D model used to fit the TEM data.

3m



## Lineaments

 : Shallow

 : Deep

Resistivity  
(log10(Ohm.m))

Surveyed and processed by  
Groundwater Imaging P/L  
October 2011

©2010 Google

©2011 Cnes/Spot Image  
©2011 Whereis@ Sensis Pty Ltd

lat -32.169680° lon 149.228998° elev 385 m

Eye alt 7.39 km

1777 m

# Cobbora: Upper Sandy Creek and Laheys Creek towed TEM Depth Slice

Resistivity at the specified depth in the smoothed 1D model used to fit the TEM data.

7m



## Lineaments

 : Shallow

 : Deep

Resistivity  
(log10(Ohm.m))

Surveyed and processed by  
Groundwater Imaging P/L  
October 2011

© 2011 Cnes/Spot Image  
© 2011 Whereis@ Sensis Pty Ltd

© 2010 Google

lat -32.169680° lon 149.228998° elev 385 m

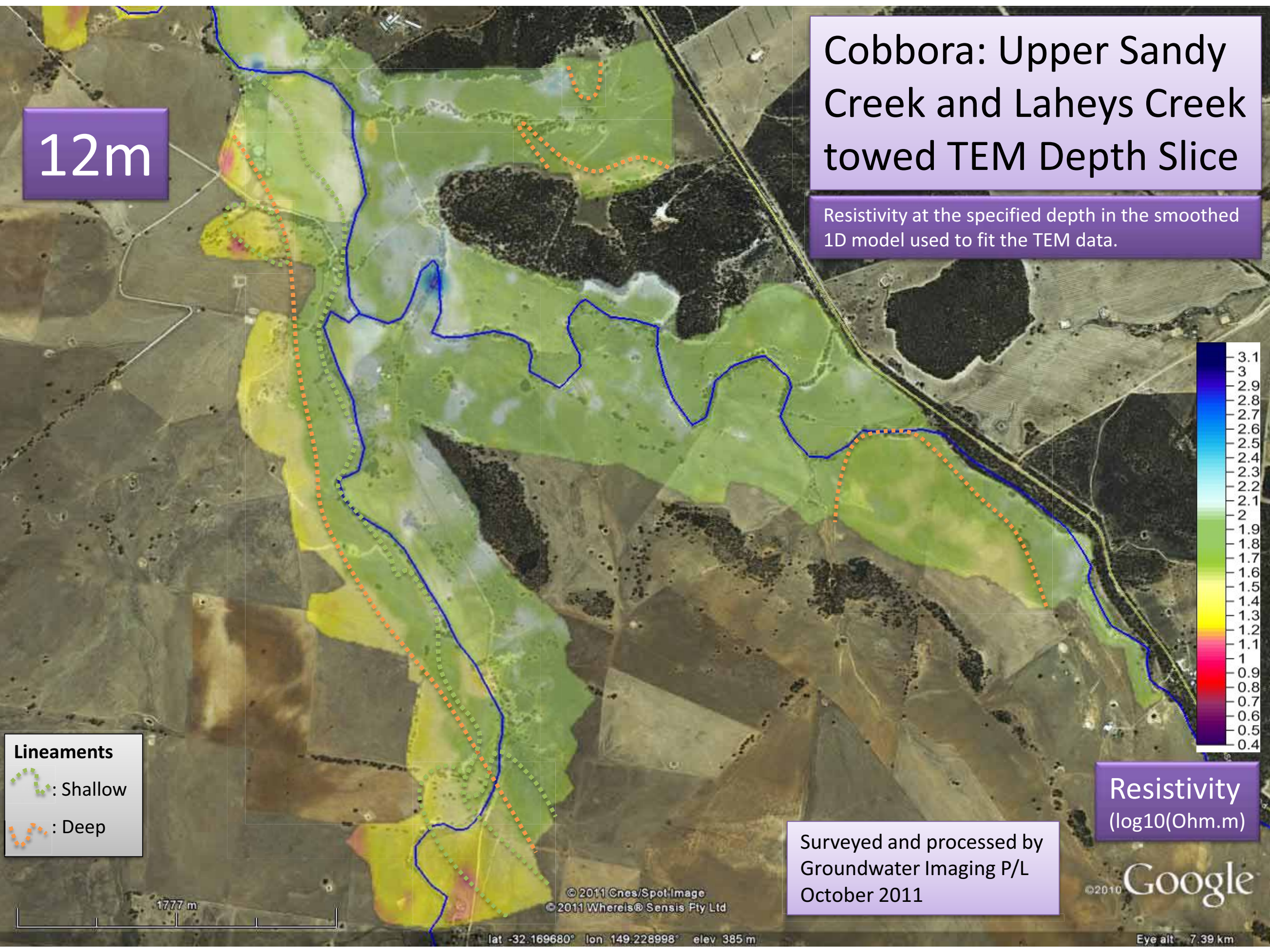
Eye alt 7.39 km

1777 m

12m

# Cobbora: Upper Sandy Creek and Laheys Creek towed TEM Depth Slice

Resistivity at the specified depth in the smoothed 1D model used to fit the TEM data.



## Lineaments

: Shallow

: Deep

Resistivity  
( $\log_{10}(\text{Ohm.m})$ )

Surveyed and processed by  
Groundwater Imaging P/L  
October 2011

©2010 Google

lat -32.169680° lon 149.228998° elev 385 m

Eye alt 7.39 km

20m

# Cobbora: Upper Sandy Creek and Laheys Creek towed TEM Depth Slice

Resistivity at the specified depth in the smoothed 1D model used to fit the TEM data.



## Lineaments

 : Shallow

 : Deep

Resistivity  
(log10(Ohm.m))

Surveyed and processed by  
Groundwater Imaging P/L  
October 2011

© 2011 Cnes/Spot Image  
© 2011 Whereis@ Sensis Pty Ltd

© 2010 Google

lat -32.169680° lon 149.228998° elev 385 m

Eye alt 7.39 km

28m

# Cobbora: Upper Sandy Creek and Laheys Creek towed TEM Depth Slice

Resistivity at the specified depth in the smoothed 1D model used to fit the TEM data.



## Lineaments

 : Shallow

 : Deep

Resistivity  
(log10(Ohm.m))

Surveyed and processed by  
Groundwater Imaging P/L  
October 2011

©2010 Google

Eye alt 7.39 km

©2011 Cnes/Spot Image  
©2011 WhereIs@Sensis Pty Ltd

lat -32.169680° lon 149.228998° elev 385 m

1777 m

36m

# Cobbora: Upper Sandy Creek and Laheys Creek towed TEM Depth Slice

Resistivity at the specified depth in the smoothed 1D model used to fit the TEM data.



## Lineaments

: Shallow

: Deep

Resistivity  
(log10(Ohm.m))

Surveyed and processed by  
Groundwater Imaging P/L  
October 2011

©2010 Google

Eye alt 7.39 km

©2011 Cnes/Spot Image  
©2011 Whereis@ Sensis Pty Ltd

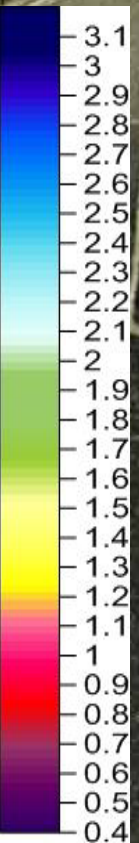
lat -32.169680° lon 149.228998° elev 385 m

1777 m

45m

# Cobbora: Upper Sandy Creek and Laheys Creek towed TEM Depth Slice

Resistivity at the specified depth in the smoothed 1D model used to fit the TEM data.



## Lineaments

- : Shallow
- : Deep

Resistivity  
(log10(Ohm.m))

Surveyed and processed by  
Groundwater Imaging P/L  
October 2011

©2010 Google

58m

# Cobbora: Upper Sandy Creek and Laheys Creek towed TEM Depth Slice

Resistivity at the specified depth in the smoothed 1D model used to fit the TEM data.



## Lineaments

 : Shallow

 : Deep

Resistivity  
(log10(Ohm.m))

Surveyed and processed by  
Groundwater Imaging P/L  
October 2011

©2010 Google

Eye alt 7.39 km

©2011 Cnes/Spot Image  
©2011 WhereIs@Sensis Pty Ltd

lat -32.169680° lon 149.228998° elev 385 m

1777 m