



Shepherds Bay - Renewal

Landscape Concept Plan - Project Application MP09_0219

Report Issue No. HOL02 - A

November 2013





contents

Page 4.....	Stage One - Landscape Masterplan
Page 5.....	Stage One - Courtyard Upper Level
Page 6.....	Stage One - Courtyard Lower Level
Page 7.....	Stage One - Hamilton, Belmore and Rothesay Ave Edge Treatment
Page 8	Foreshore Link Upper Level
Page 9.....	Foreshore Link Lower Level
Page 10-11	Foreshore Link Section
Page 12.....	Foreshore Link - Stair wall elevation
Page 13.....	Stage One - Courtyard - Hardscape Palette
Page 14.....	Foreshore Link Hardscape Palette
Page 15.....	Stage One - Courtyard Softscape Palette
Page 16.....	Stage One and foreshore link - External Softscape Palette
Page 17.....	Indicative Planting Schedule



stage one - landscape masterplan



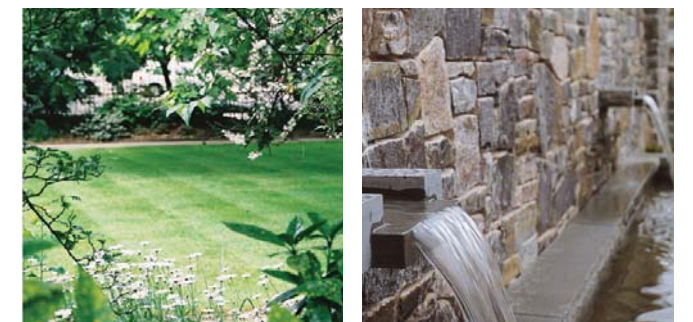
design intent



Location Plan

The following pages outline the proposed landscape for Stage 1. Maintained and managed by the body corporate, the space is to be of high quality with a design style that is intended to work seamlessly with the architecture and surrounding public domain. This high quality has been reflected in the choice of hardscape material, furniture palette the planted material. External public spaces which form part of the Stage I Project Application will be of similar character, whilst catering for greater usage.

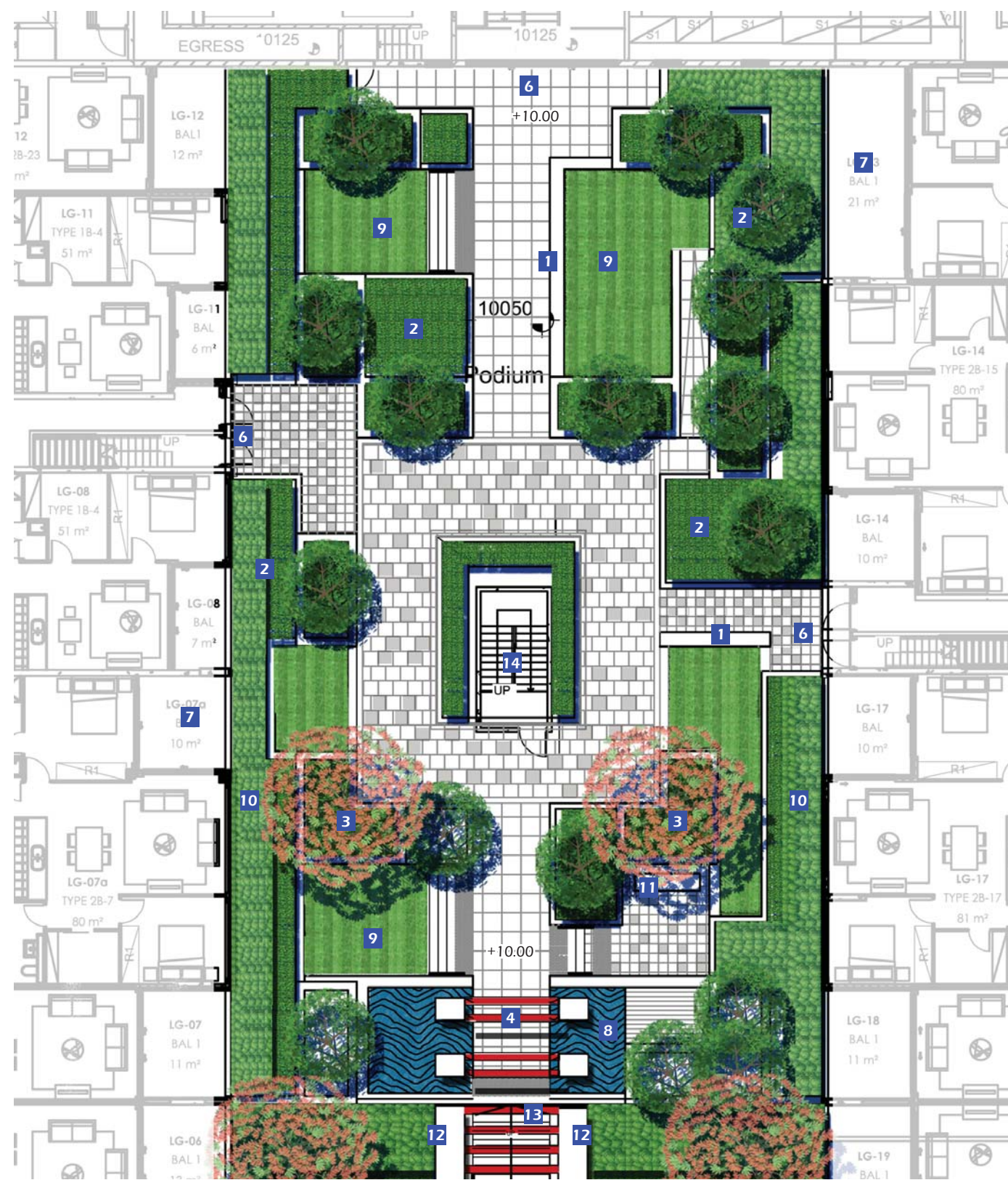
- 1 Staircase access from Hamilton Crescent
- 2 Stage 1 upper level courtyard
- 3 Stage 1 lower level courtyard
- 4 Foreshore link pocket park upper level
- 5 Foreshore link pocket park mid level
- 6 Foreshore link pocket park terraced
- 7 Foreshore link pocket park lower level
- 8 Foreshore link Commercial square
- 9 Stage 1 courtyard level change
- 10 Ramp access from Belmore Street
- 11 Stage One Boundary Line
- 12 Residents southern entry with security gate
- 13 Hamilton Crescent and associated wall works
- 14 Feature Tress
- 15 Existing Fig trees retained
- 16 Extent of Stage 1 Project Landscape Works
- 17 Groundfloor Lobby Entrance/Exit
- 18 Substation location



Scale 1:500 @ A3



stage one - courtyard upper level



Scale 1:200 @ A3



Location Plan

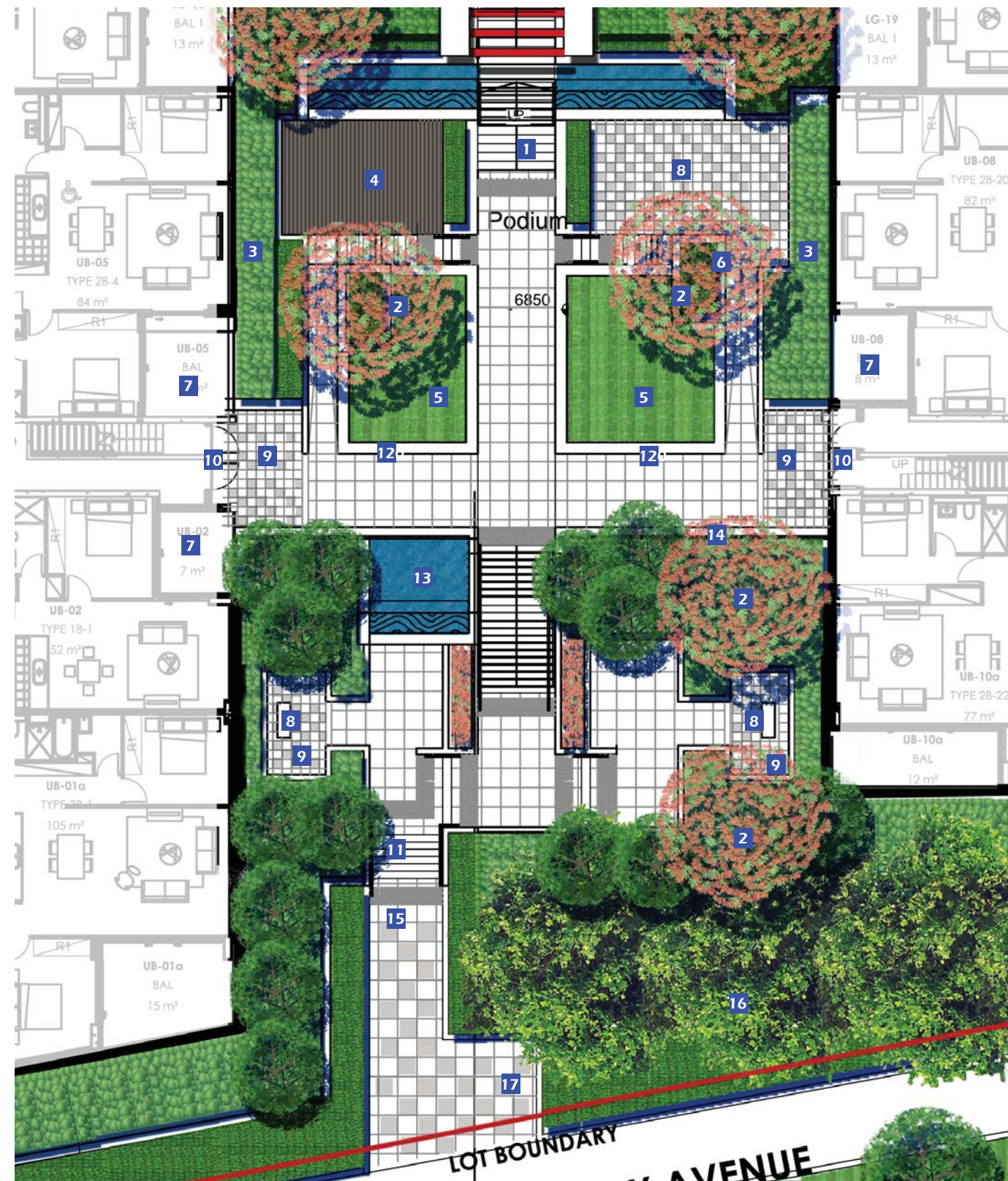
- 1 Stone slab seating element
- 2 Raised shrub planter bed
- 3 Feature shade tree
- 4 Central overhead structure
- 5 Central upper ground feature paving
- 6 Entry/exit point
- 7 Private Patio Area
- 8 Reflection pool
- 9 Raised grass planter
- 10 Buffer/screening shrubs planting to private patio
- 11 Monolithic seating element with views to the river
- 12 Air vents
- 13 Central stairway connecting upper and lower courtyard levels
- 14 Stairs to basement

The spatial arrangement of shrub and buffer screen planting, turf squares and paved plazas responds directly to the architectural alignments for a seamless transition between landscape and building. Private courtyards to ground floor apartments are screened by mid hall height shrub planting. Mid size specimen trees accentuate verticality and provide shade in summer months.





stage one - courtyard lower level



Scale 1:200 @ A3

0 4 8 12m



Location Plan

- 1 Central stairway connecting upper and lower courtyard levels
- 2 Feature trees
- 3 Buffer / screening shrub planting
- 4 Timber Deck
- 5 Open lawn
- 6 Shade tree
- 7 Private Patio space
- 8 Shaded seating zone
- 9 Feature paving
- 10 Entry/exit point with security gate
- 11 Private courtyard entry
- 12 Seating edge
- 13 Cascade water feature
- 14 Basement wall
- 15 Entry/exit stairs to street level
- 16 Existing fig trees retained
- 17 Bicycle racks for 10 bicycles

A sequence of rectilinear shallow water pools located strategically throughout the internal courtyard provide relaxation and acoustic benefits associated with water movement. High quality hardscape materials and a furniture palette contribute to the high quality feel of the space. The courtyard will be gated at the Southern entry point with electronic swipe card access for residents.



stage one - hamilton, belmore and rothesay edge treatment



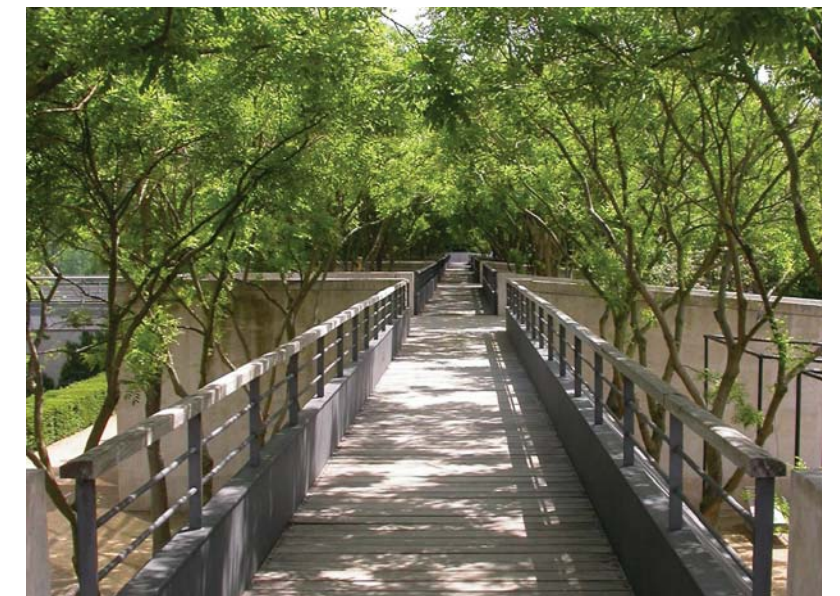
design intent

The design allows for clear and direct movement around the Stage 1 site. Mid height screen / buffer shrubs between the buildings and footpath will soften the interface between the built form and landscape.

Terraced walls, dense shrub planting and mid /large size deciduous and evergreen trees within a designated deep soil zone provide a valuable backdrop to Stage 1. Existing fig trees are retained to Rothesay Avenue with manicured lawn understorey. The introduction of proposed streetscape trees the West and East reinforces the defined Streetscape character.

- 1 Grand staircase entrance from Hamilton Crescent
- 2 Ramp Access from Belmore Street
- 3 Deep soil planting zone (refer note 1)
- 4 Buffer shrub planting
- 5 Stage One boundary line
- 6 Street trees
- 7 Entry/exit point
- 8 Existing trees to retain
- 9 Open lawn (mounded)
- 10 Central gathering space in-line with courtyard
- 11 Bicycle racks for 10 bikes
- 12 Overhead entrance structure

Note 1 : Deep soil planting zone
There is a maximised area of deep soil planting between the building and Hamilton Crescent West. We anticipate that the deep soil area and soil depth will be enough to support large canopy tree planting. Proposed species include Fraxinus, Waterhousea and Cupaniopsis in addition to larger shrubs. The deep soil through this area will be a minimum of 2m deep. The area of deep soil planting to this zone is approximately 285 sqmt.





Foreshore link upper level



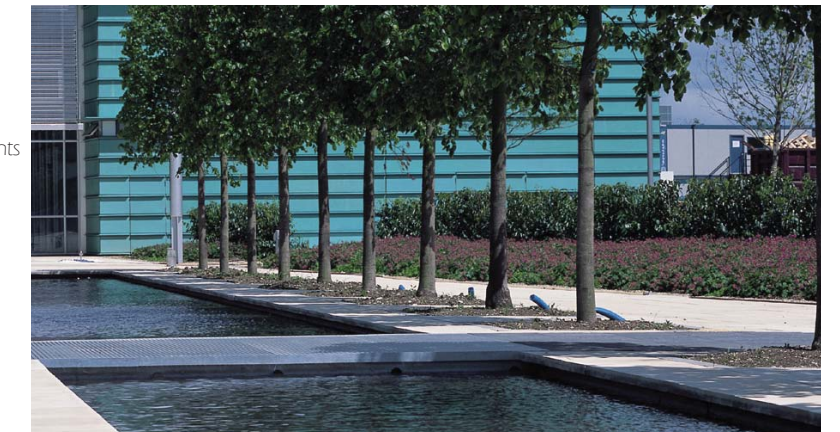
Location Plan

- 1 Overhead structure for lobby entrance paths
- 2 Pedestrian connection from Hamilton Crescent top Pocket Park
- 3 Linear water feature
- 4 Upper level pocket park with river views
- 5 Large 'floating' stone slab seating elements
- 6 Stairway connecting upper to mid level pocket park
- 7 Basement fire escape exit
- 8 Cascading water wall
- 9 Open lawn
- 10 Large shade trees
- 11 Integrated seating element at high end of lawn
- 12 Lightweight pedestrian grate over water (stainless steel)
- 13 Timber ground inserts adjacent to seating
- 14 Timber entrance path
- 15 Steps leading to lower level pocket park
- 16 Feature paving
- 17 Flush pedestrian entry to lawn
- 18 Buffer planting for ground floor patio security & privacy
- 19 Stage 1 boundary

The northern end of the pocket park is accessible via stairs from Hamilton Crescent. Linear pedestrian paths continue southward to connect to Rothesay Avenue and the foreshore.

The design replicates the internal courtyard arrangement with a sequence of terraces, retaining walls and cascade water features. The signature vegetation strategy focuses on lines of evergreen specimen trees for shade and increased amenity to the periphery of the turf and within hardscape plaza spaces on the lower level.

19 Lobby Entrance



Foreshore link - lower level



design intent



Location Plan

The southern half of the pocket park is connected seamlessly with the northern half via lineal pedestrian paths and a visual lineal water feature. The design to the south incorporates a sequence of retained turf terraces that provide space for relaxation and occasional passive recreation. The formal alignments of feature trees reinforce the geometry to the ground plan and provide increased shade combined with visual interest. An entrance feature tree at the south visually connects the entrance feature tree at the north.



- 1 Terracing gardens connecting upper and lower level pocket parks
- 2 Linear open lawns with shade trees
- 3 Pedestrian paths
- 4 Feature trees
- 5 Built in seating under shade trees with view to river
- 6 Overhead structure at lobby entrances
- 7 Feature paving for Threshold plaza
- 8 Integrated seating and sculptural lawn
- 9 Stage One boundary line
- 10 Steps connecting threshold plaza to raised pocket park
- 11 Bicycle racks
- 12 Buffer planting for ground floor patio security & privacy
- 13 Lineal water feature
- 14 Access ramps (1:14)
- 15 Ground floor lobby entrance
- 16 Shaded square for gathering and seating

