



stage one - foreshore link section - part 1



- | | | | |
|--|--|---|-------------------------------------|
| 1 Stairs to Hamilton Crecent | 5 Shade trees for look out point | 9 Large open lawn | 13 Feature trees |
| 2 Trees screening wall heights | 6 Stone slab seating with views | 10 Shade trees in buffer planting | 14 Boardwalk lobby entrance |
| 3 Cascading water feature behind | 7 Seating steps with views | 11 Built-in stone seating edges at end of retaining walls | 15 Buffer Planting |
| 4 Linear water feature beyond grass line | 8 Planters integrated with seating steps | 12 Over head structure at lobby entrance path | 16 Rothesay Avenue entrance seating |

stage one - foreshore link section - part 2





Foreshore link - Stair wall elevation



Section - Location Plan

design intent

Stair wall

"The staircase provides direct and efficient access from Hamilton Crescent to the Foreshore Link. The central location allows for increased distance between the buildings and staircase, thus minimizing the impact on adjacent residents and allowing for significant deep soil terraced planter beds to each side. This in turn results in an opportunity for significant low maintenance shrub and native grass planting combined with mid size evergreen trees that minimize the impact of the change in level. The ultimate size of this planting will still allow expansive views from Hamilton Crescent through to the foreshore.

The design also ensures that the footprint of the staircase will be kept to a minimum, allowing maximum surface area for usable landscape plaza and lawns at the base of the slope. The staircase walls will be low with powder-coated or polished steel railings providing permeability across the structure and minimizing the impact of the staircase when viewed from below. Low maintenance, high quality materials and finishes will be used throughout to ensure a consistent aesthetic with the stage 1 built form and landscape and to also ensure full integration with the wider foreshore link materials palette"

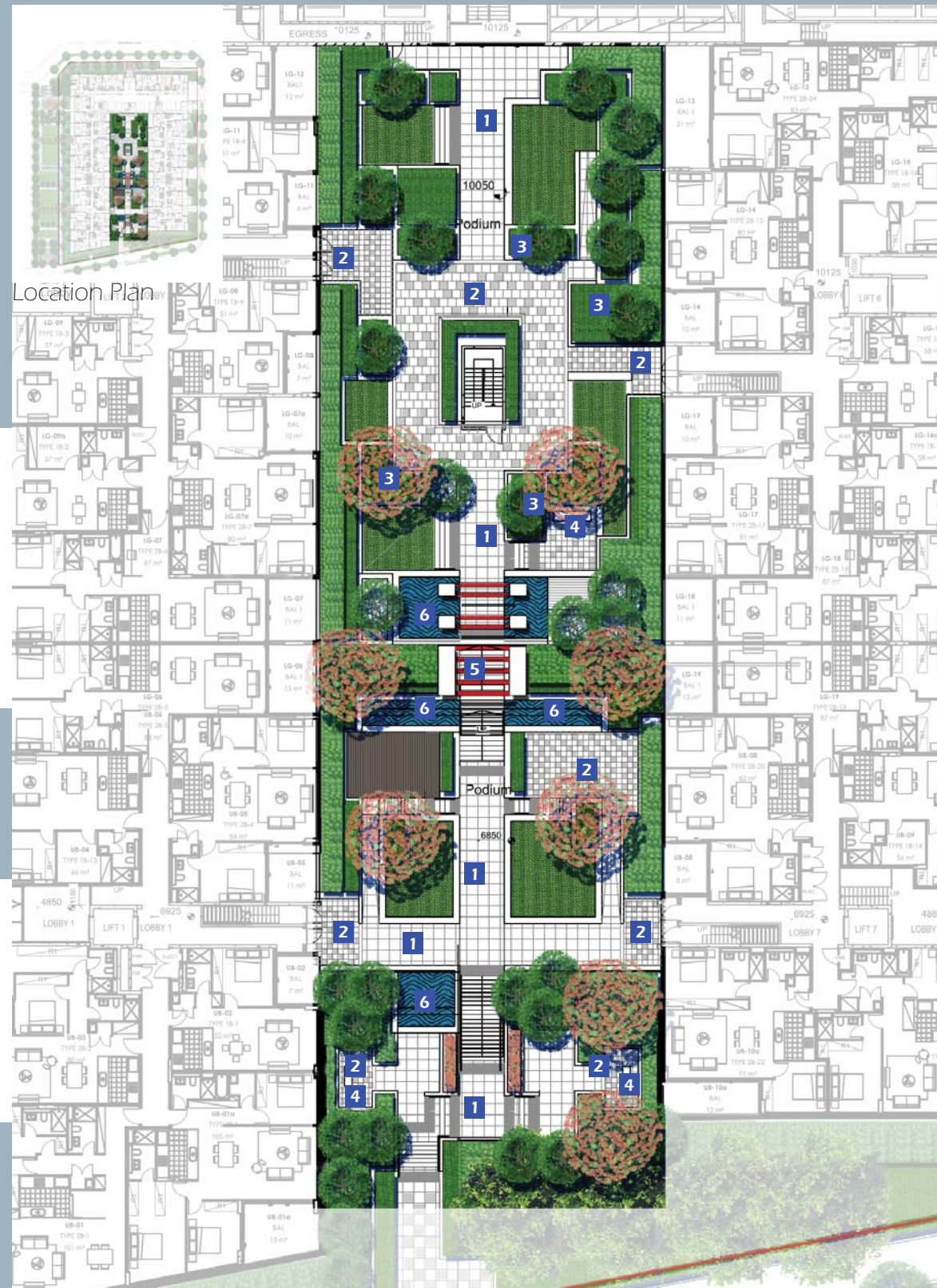


Scale 1:50 @ A3



stage one courtyard - hardscape palette

design intent



- 1 Paving
- 2 Feature Paving

Pavements

An indicative selection of hardscape pavement materials has been identified for Stage 1 that responds to the architectural palette and provides fresh and contemporary appearances. The selection also is intended to fully meet the performance requirements of each space. Products will be durable, low maintenance and able to sustain medium to heavy usage over time.

Colour: Mix grey/blue granite in a variety of pattern and texture.

Kerbing: Will generally be white to denote colour contrast.

Seating alcoves: Small unit porphyry seats with split face finish.

Bonding: Dark grey with contrasting finish.



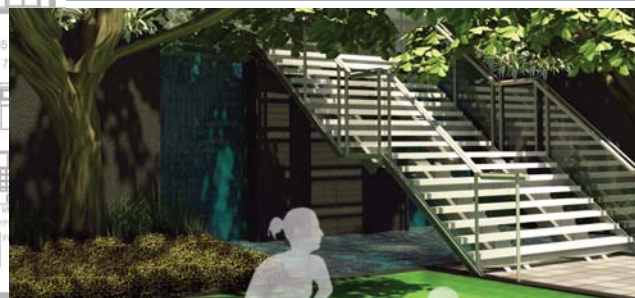
3 Courtyard planters

Concrete edged planters will contain a combination of tall shrubs, architectural native grasses and bamboo to provide vertical emphasis. Planter edging will be dark grey granite to contrast with the paving colour palette.



4 Seating

The seating elements throughout the Stage 1 courtyard will be preformed shaped concrete blocks, light grey or white in colour with polished surfaces. Lighting will be integrated into the seating element.



5 Central stairway

The central staircase between the north and south portion of the courtyard will be modern in style and relate to surrounding architectural finishes. The palette will be predominantly stainless steel, glass or perforated steel with tension wired balustrade.



6 Water features

Water features will be designed to complement the paving palette and scale of the space. Clean simple and modern using polished granite or bluestone tiles for the base and sides. Edging will match the planters for consistency.



Foreshore link hardscape palette



design intent



1 Paving



2 Feature Paving

Paving External

The paving palette for peripheral areas will contrast with the internal Stage 1 courtyard whilst retaining similar principals. Materials choice will again be based on high usage and be low maintenance.

Pavement bonding and header course will contrast with in fill paving and provide textural contrast



3 Water features

Cladding materials for the linear water rills and cascades will complement both the architecture and landscape design: Edging slabs will match the planter design to retain consistency through the palette



4 Seating elements

The seating elements throughout the external space will be preformed shaped concrete blocks intergrated with the high lawn edge, light grey in colour with polished surfaces.

Lighting will be integrated into the seating element.



5 Lobby Entrance Structures

At each building lobby entrance the access path will boast a change in ground materials introducing a mix of timber/concrete as well as an overhead timber structure to create entrance identity nodes throughout the foreshore link park.

stage one courtyard - softscape palette



Pyrus 'Chanticleer'
Manchurian Pear
Type: Deciduous Tree
Height: 8m



Pistacia chinensis
Chinese Pistache
Type: Deciduous Tree
Height: 10m



Sapium sebiferum
Chinese Tallowood
Type: Semi- Deciduous Tree
Height: 10m



Viburnum Odoratissimum
Sweet Viburnum
Type: Screening Shrub
Height: 3m



Westringia fruticosa 'Zena'
Coastal Rosemary
Type: Low Shrub
Height: 0.75m



Philodendron 'Xanadu'
Xanadu
Type: Low Shrub
Height: 0.75m



Murraya paniculata
Orange Jessamine
Type: Screening Shrub
Height: 4m

design intent

The planting strategy to Stage 1 informs the creation of a legible and permeable framework of footpaths and semi private seating areas. Colour, texture, height and form are critical factors that contribute to the success of the internal courtyard area. Tree planting is intended to provide seasonal interest and solar access in winter. Shrubs and taller native grasses will be utilised to separate the private and public domain whilst framing the internal courtyards on all sides.

The Stage One courtyard will be in shade for many hours of the day. Therefore a quality over quantity is the key for trees as is there locations and form. Four feature trees are strategically placed though out to balance the colours and vertical elements. Shrubs are chosen for the purpose of screening patios and windows where necessary while at the same time complimenting the colour of the surrounding water feature.



Gardenia augusta 'Florida'
Gardenia
Type: Low Shrub
Height: 1m



Scaevola aemula
Fairy Fan-flower
Type: Groundcover
Height: 0.5m



Liriope muscari 'El Marco'
Turf Lily
Type: Grass
Height: 0.3m



Stenotaphrum secundatum
Soft leaf buffalo grass
Type: Turf



stage one and foreshore link - external softscape palette



Cupaniopsis anacardioides
Tuckeroo
Type: Evergreen Tree
Height: 8m



Waterhousia floribunda
Weeping Lily Pilly
Type: Evergreen Tree
Height: 15m



Pyrus 'Chanticleer'
Manchurian Pear
Type: Deciduous Tree



Fraxinus 'Cimmeron'
Claret Ash
Type: Deciduous Tree
Height: 15m



Ulmus parvifolia
Chinese Elm
Type: Deciduous Tree
Height: 12m

design intent

A combination of both endemic native and evergreen introduced species for shade creation are at the core of the aesthetics for the external landscape. Species that relate to the river and riparian environment will be chosen to enforce the strong connection between the proposed domain and existing ecology. Final species selection will occur in consultation with Council.



Lomandra 'Tanika'
Mat Rush
Type: Grass
Height: 0.7m



Liriope muscari
Turf Lily
Type: Grass
Height: 0.75m



Trachelospermum
jasminoides
Star Jasmine
Type: Groundcover
Height: 0.75m



Dianella 'Silver Streak'
Paroo Lily
Type: Grass
Height: 0.6m



Lomandra hystrix
Mat Rush
Type: Grass
Height: 1m



Stenotaphrum secundatum
Soft leaf buffalo grass
Type: Turf

Indicative planting schedule

SYM	BOTANICAL NAME	COMMON NAME	HEIGHT	SPACING	POT SIZE
DECIDUOUS TREES					
	Fraxinus pennsylvanina 'Cimмерon'	Claret Ash	15m	As Shown	200L
	Pistascia chinensis	Chinese Pistache	12m	As Shown	100L
	Pyrus calleryana 'Chanticleer'	Manchurian Pear	12m	As Shown	100L
	Sapium serbiferum	Chinese Tallowood	12m	As Shown	100L
	Ulmus parvifolia	Chinese Elm	12m	As Shown	100L
EVERGREEN TREES					
	Tristanopsis laurina 'Luscious'	Water Gum	12m	As Shown	75L
	Waterhousia floribunda	Weeping Lily Pily	8m	As Shown	75L
	Cupaniopsis anacardiodes	Tuckeroo	10m	As Shown	75L
SHRUBS					
	Gardenia augusta 'Florida'	Gardenia	1m	3m2	25L
	Murraya paniculata	Orange Jessamine	3m	2m2	150mm
	Philodendron 'Xanadu'	Xanadu	0.75m	5m2	200mm
	Viburnum odoratissimum	Sweet Viburnum	6m	500mm	25L
	Westringia fruticosa 'Zena'	Coastal Rosemary	0.75	500mm	25L
GRASSES & GROUND COVERS					
	Dianella 'Silver Streak'	Paroo Lily	0.6m	5/m²	150mm
	Liriope 'El Marco '	Turf Lily	0.3m	5/m²	150mm
	Liriope muscari	Turf Lily	0.5m	5/m²	150mm
	Lomandra hystrix	Mat Rush	0.7m	7/m²	75mm Tube
	Lomandra longifolia 'Tanika'	Mat Rush	0.6m	7/m²	75mm Tube
	Scaevola aemula	Fairy Fan-flower	0.5m	7/m²	75mm Tube
	Trachelospermum jasminoides	Star Jasmine	0.6m	5/m²	150m
	Viola hederacea	Native Violet	0.2m	5/m²	100mm

Note: Final Planting Schedule Subject to Detailed Landscape Plans

design intent

The Indicative planting palette to be used throughout Stage One has been selected upon it’s suitability to fulfill the following criteria:

- Enhance the local character of Meadowbank
- Remain in line with the City of Ryde’s environmental policies
- Soften and visually reduce bulk/scale of built forms
- Provide buffering/screening to residential areas
- Create a aesthetically pleasing & tranquil environment for residents to enjoy
- Contribute to habitats of the local fauna

A wide selection of trees, both native and exotic, have been selected for the sites streetscapes and landscaped areas. Where possible local natives will be used so as to remain consistent with the vegetation communities found within the City of Ryde. Specific areas will see exotic species used for accent planting and foliage interest.

Shrubs have been chosen not only for their aesthetic attributes but also functionality in terms of providing buffering and screening to residents on groundfloor apartment surrounding the courtyard. Lush foliage and dense growing habits have been favoured.

Grasses and groundcovers have been selected from a predominantly native palette and will be aimed at softening edges and large areas of hardscape.