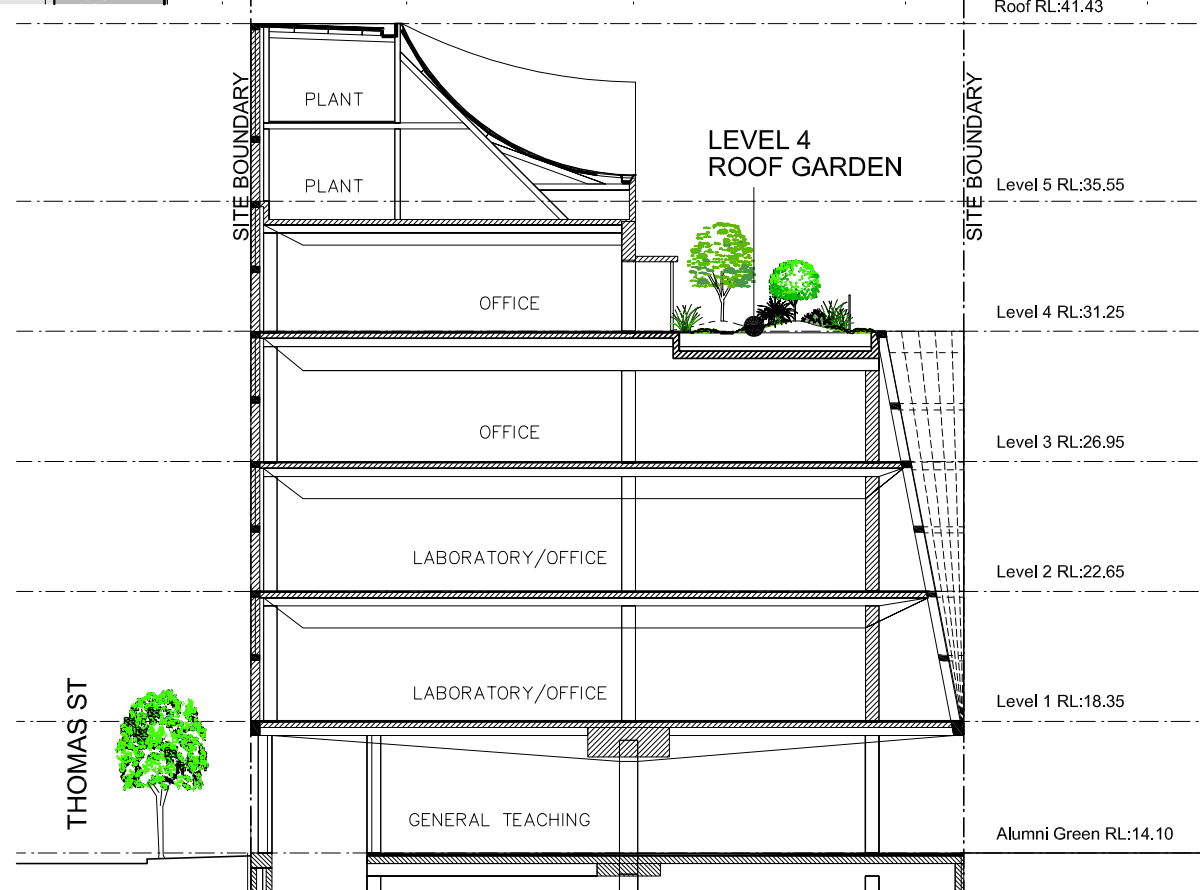


**GROUND FLOOR 1:250**



**BUILDING SECTION 1:250**

### LANDSCAPE DESIGN INTENT

The Landscape Concept Plans address the Department of Planning, Director General's Requirements in relation to landscaping for the Thomas Street Building, UTS Sydney Broadway project.

Site landscaping is proposed on Level 4 as a roof garden over an area of approx. 750 sq.m. and in a planter on the western side of Level 1.

The garden is a green roof with environmental values that include stormwater management, insulation and visual amenity. It will function as a biofilter for stormwater management and also as a passive recreational space for staff. An informal path and seating nodes are elements in the garden design.

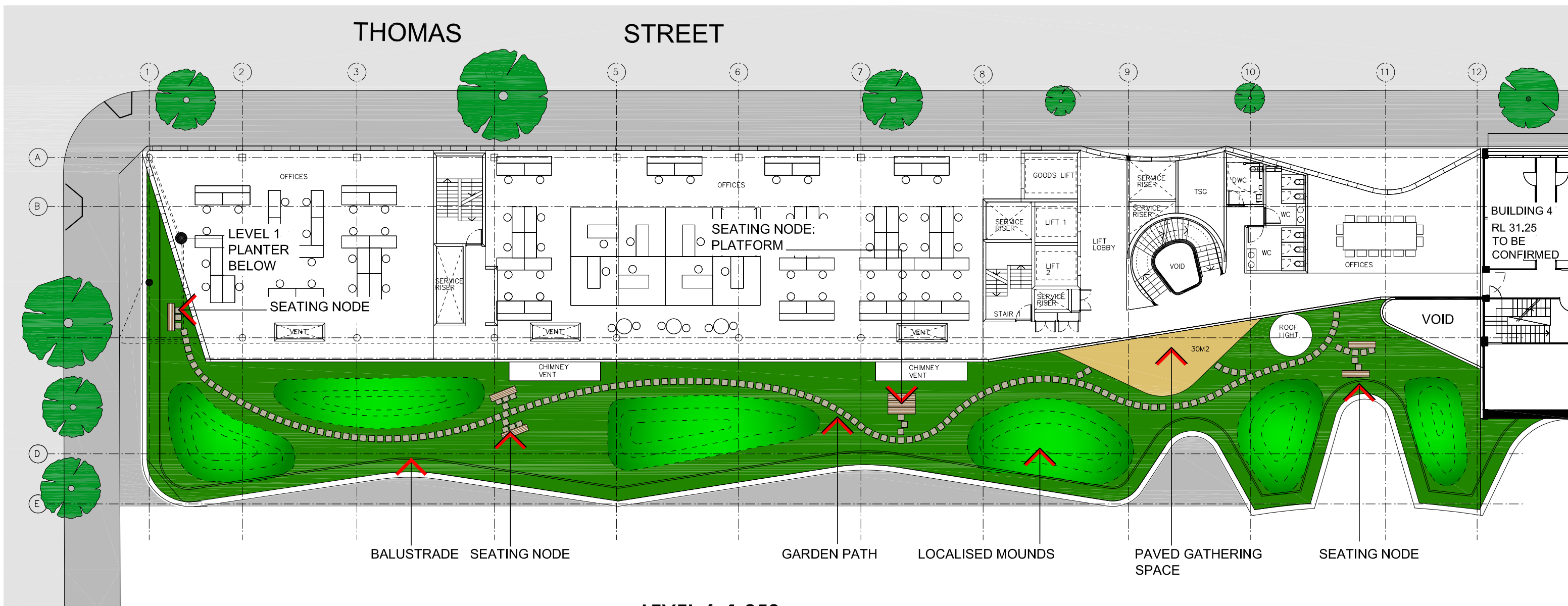
Plant selection will be based on a hardy, 'waterwise' palette of grasses, groundcovers, shrubs and small trees with a sub-tropical character. The Green Roof will incorporate experimental plantings by the Faculty.

The substrate growing media will be mounded to provide varying depths for the planting arrangement. Similar plantings are proposed for the Level 1 planter.

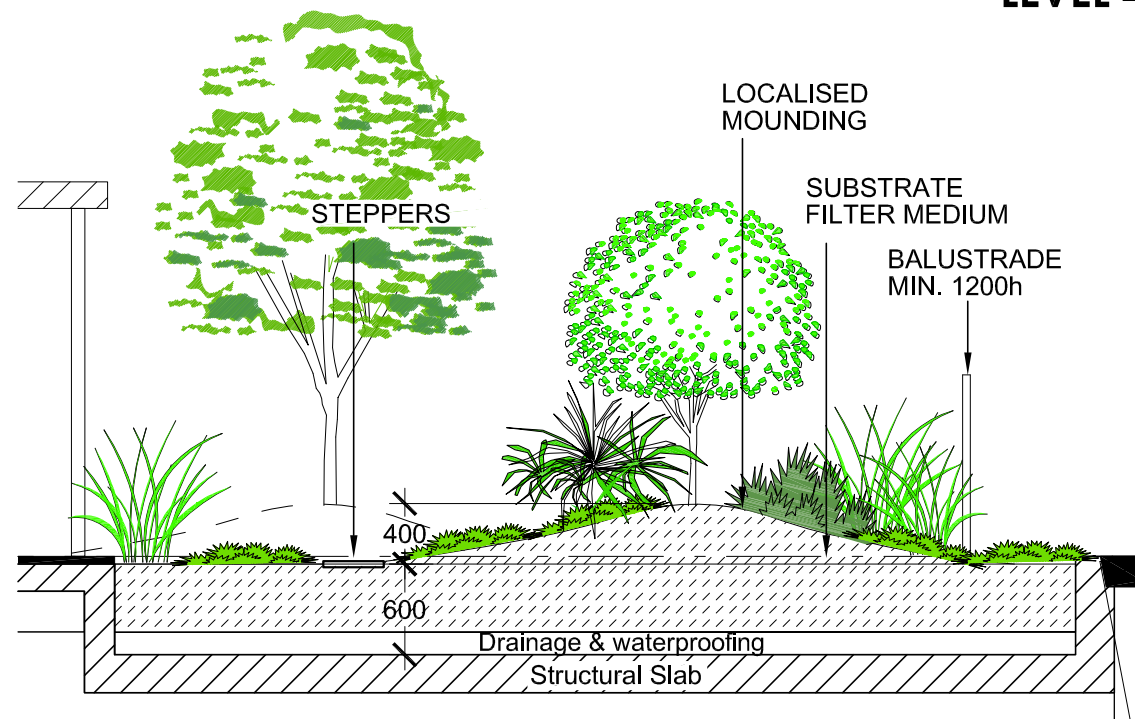
Existing street trees and hardscape in the public domain of Thomas and Jones Streets will be retained.



# THOMAS STREET



LEVEL 4 1:250



TYPICAL ROOF GARDEN SECTION 1:50



SELECTED TREES, SHRUBS & GROUNDCOVERS

GREEN ROOF TO INCORPORATE EXPERIMENTAL PLANTINGS BY FACULTY



**Deverson + Associates** Pty Ltd  
Landscape Architects



## THOMAS ST BUILDING UTS BROADWAY CAMPUS LANDSCAPE CONCEPT

Scale 1:250 A3  
Date DEC 2011  
Issue C

Sheet 2 of 2  
Drg. No. 1300-2