

LEGEND

- 1 WALL
- 2 WALL
- 3 WALL
- 4 ENTRY CANOPY
- 5 EXTERNAL SUN SHADING
- 6 EXTERNAL SUN SHADING
- 7 WALL
- 8 BALUSTRADE
- 9 PLANT ROOM

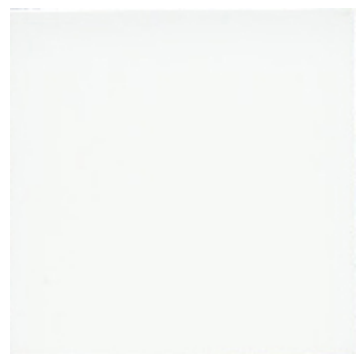
- CURTAIN WALL SYSTEM
- NATURAL FINISH OFF-FORM CONCRETE
- ALPOLIC- DULUX ICE WHITE Z500
- SLATTED TIMBER
- HORIZONTAL ALUMINUM LOUVERS
- VERTICAL TIMBER LOUVERS
- HONED SANDSTONE TILES
- GLASS BALUSTRADE
- HORIZONTAL LOUVERS



1



2



3



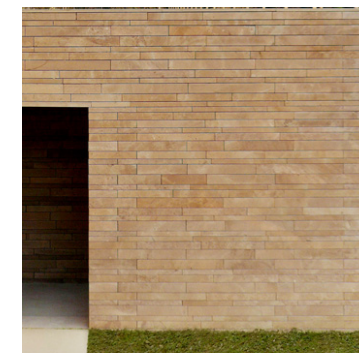
4



5



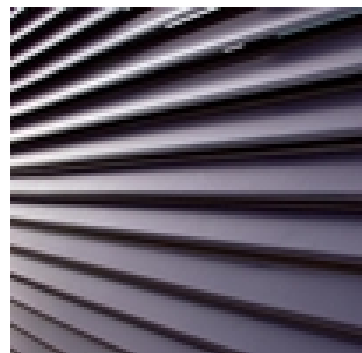
6



7



8



9

COPYRIGHT © ALL RIGHTS RESERVED, THIS DRAWING MAY NOT BE REPRODUCED OR TRANSMITTED IN ANY FORM OR BY ANY MEANS IN PART OR IN WHOLE WITHOUT PERMISSION OF MORRIS BRAY ARCHITECTS PTY. LTD.

ALL LEVELS AND DIMENSIONS TO BE VERIFIED PRIOR TO COMMENCEMENT OF WORK. USE FIGURED DIMENSIONS ONLY. DO NOT SCALE.

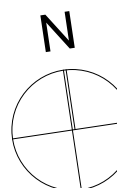
ALL WORK TO COMPLY WITH CURRENT REGULATIONS AND S.A.A. STANDARDS.

NOTES	No.	Initial	DATE	REVISION / ISSUE DETAILS	Check	PROJECT
	B	ST	13.07.10	Approval		

SAH Day Surgery Hornsby Redevelopment Northcote Road / Palmerston Road Hornsby

SYDNEY ADVENTIST HOSPITAL

186 Fox Valley Road
Wahroonga NSW
phone : +61 2 9487 9111
fax : +61 2 9487 9266



morrisbrayarchitects

Morris Bray Architects
186-188 Willoughby Rd
Crows Nest NSW 2067 Australia
ABN 16 001 268 211
NSW Architects Registration Board Nominated Architects: Terry Morris 3354 Garry Bray 3555

[P] +612 9438 8622
[F] + 612 9438 4873
[E] info@morrisbray.com.au
[W] www.morrisbray.com.au

DRAWING TITLE:

STAGE 2 MATERIALS AND FINISHES

[Scale ref: 00008 EA 01a (jobprintserver)]
NA @A2

09009
JOB NO.

A/E-A-215
DRAWING NUMBER:

PLOT DATE:
14/07/2010

B
ISSUE:

215