

Existing access	Side of road	Existing access name/type	Layout under initial staging	Layout under full motorway upgrade
Ch 70900	East	Crown Road with private access	<p>Retain current location.</p> <p>Left in/out movements onto southbound carriageway only.</p> <p>Southbound to northbound U-turn possible at Ch 70700.</p> <p>Northbound to southbound U-turn possible at Serendipity Road.</p>	<p>Retain current location.</p> <p>Connect to new two-way service road.</p> <p>Connection from east service road to highway possible immediately beyond project limits at Ch 66000.</p>
Ch 70900	West	Private access	<p>Retain current location.</p> <p>Left in/out movements onto northbound carriageway only.</p> <p>Southbound to northbound U-turn possible at Ch 70700.</p> <p>Northbound to southbound U-turn possible at Serendipity Road.</p>	<p>Retain current location.</p> <p>Remove connection to existing highway and connect to new two-way service road.</p> <p>Connection from service road back to highway possible immediately beyond project limits at Ch 66000 and Ch 71000.</p>
Ch 72100	West	Private access	<p>Retain current location.</p> <p>Left in/left out movements onto northbound carriageway only.</p> <p>Southbound to northbound U-turn possible at Ch 70700.</p> <p>Northbound to southbound U-turn possible at Serendipity Road.</p>	Retain current location and access arrangement.
Ch 72150	East	Private access	<p>Retain current location.</p> <p>Left in/out movements onto southbound carriageway only.</p> <p>Southbound to northbound U-turn possible at Ch 70700.</p> <p>Northbound to southbound U-turn possible at Serendipity Road.</p>	<p>Remove access.</p> <p>Alternative access provided at Ch 70900.</p>

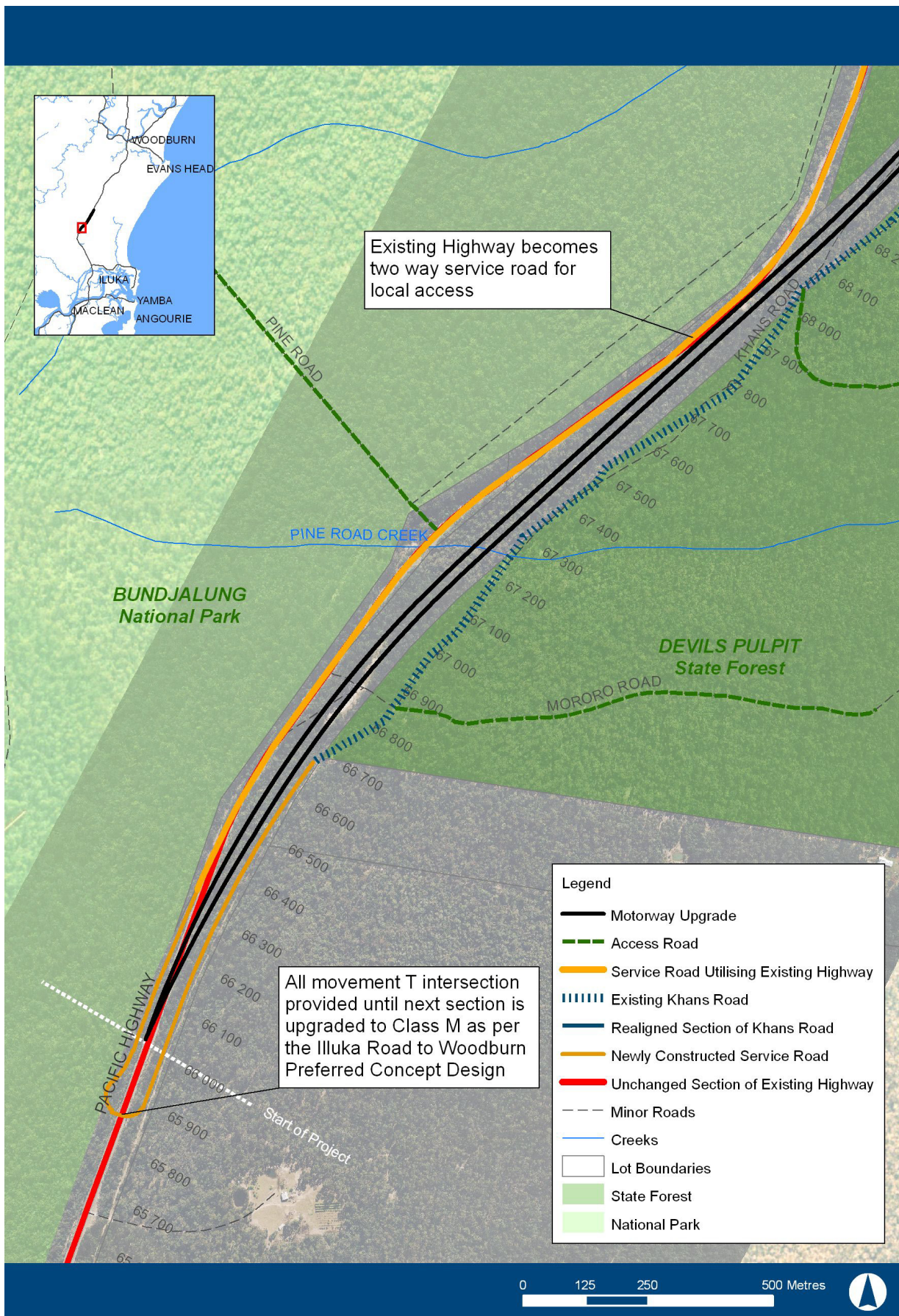


Figure 4-7a Proposed access (Motorway upgrade) (Ch 66000-68000)

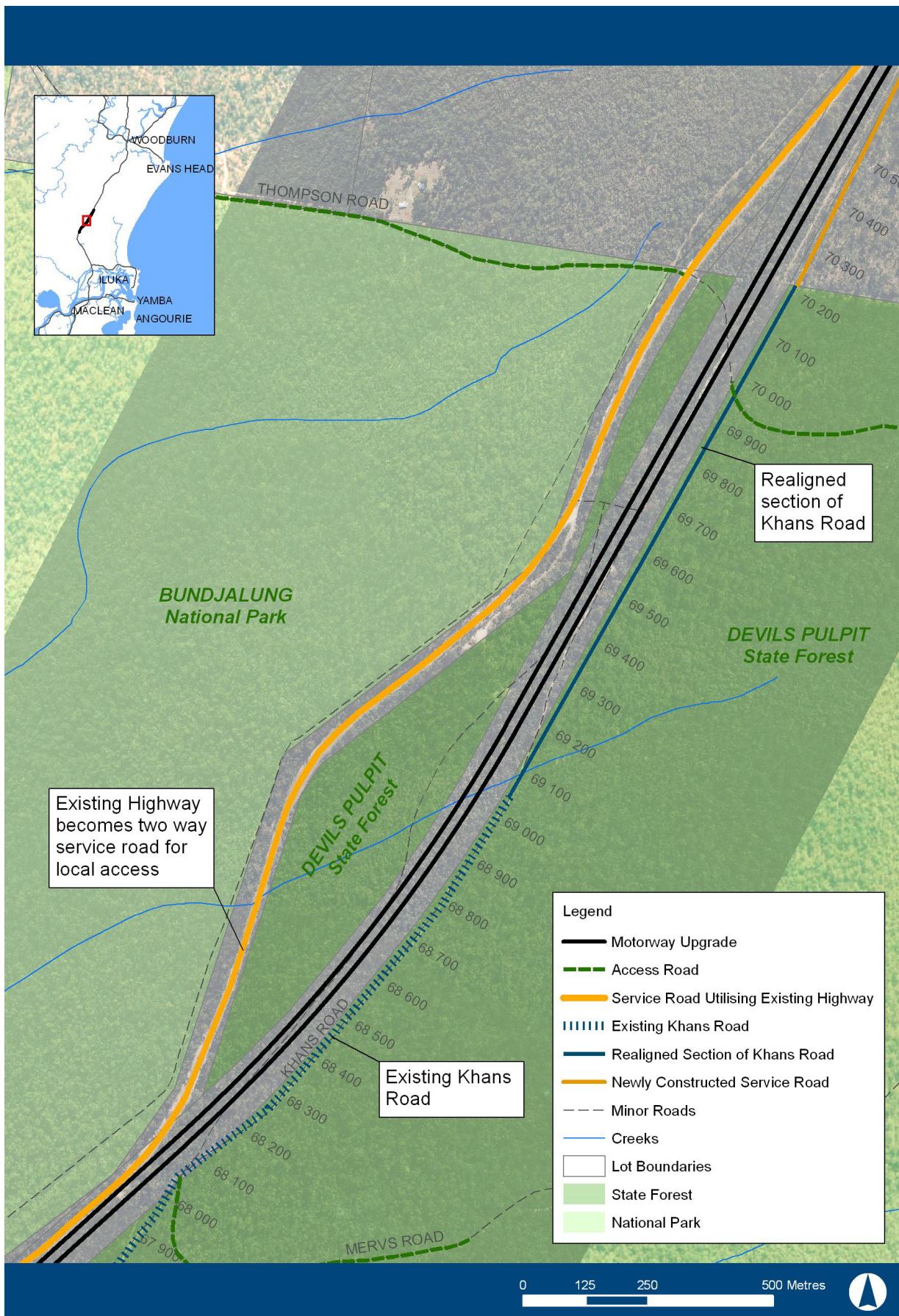


Figure 4-7b Proposed access (Motorway upgrade) (Ch 68000-70500)

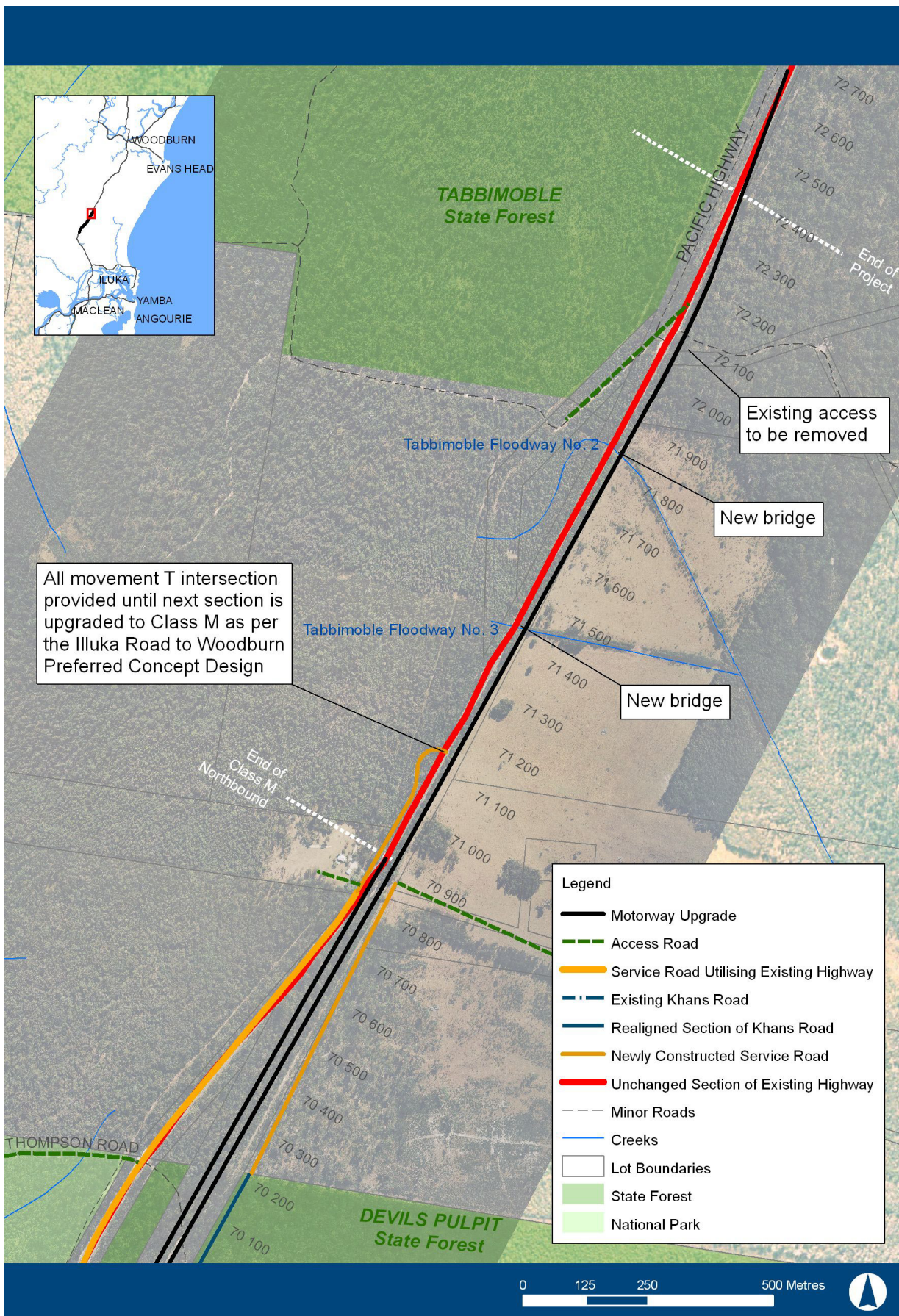


Figure 4-7c Proposed access (Motorway upgrade) (Ch 70500-72500)