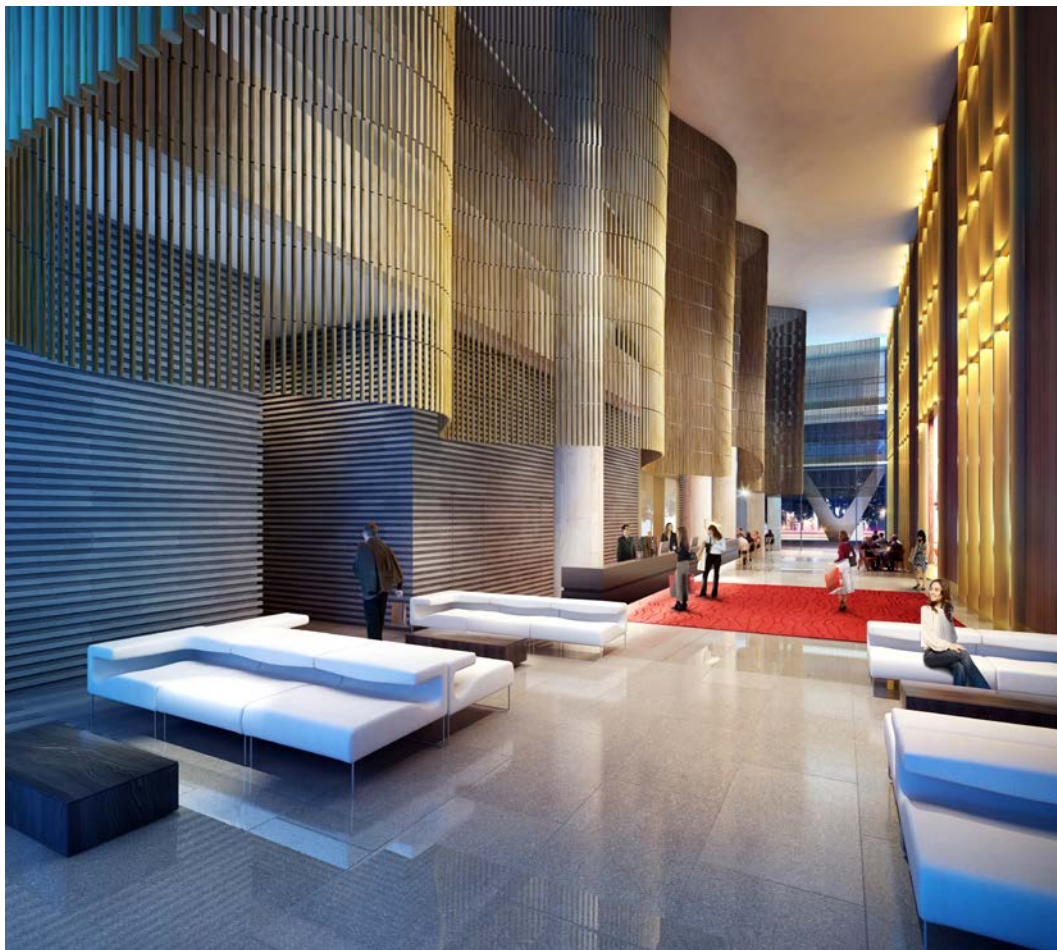




ARTIST IMPRESSION

PLANS/ SECTIONS/ ELEVATIONS 02

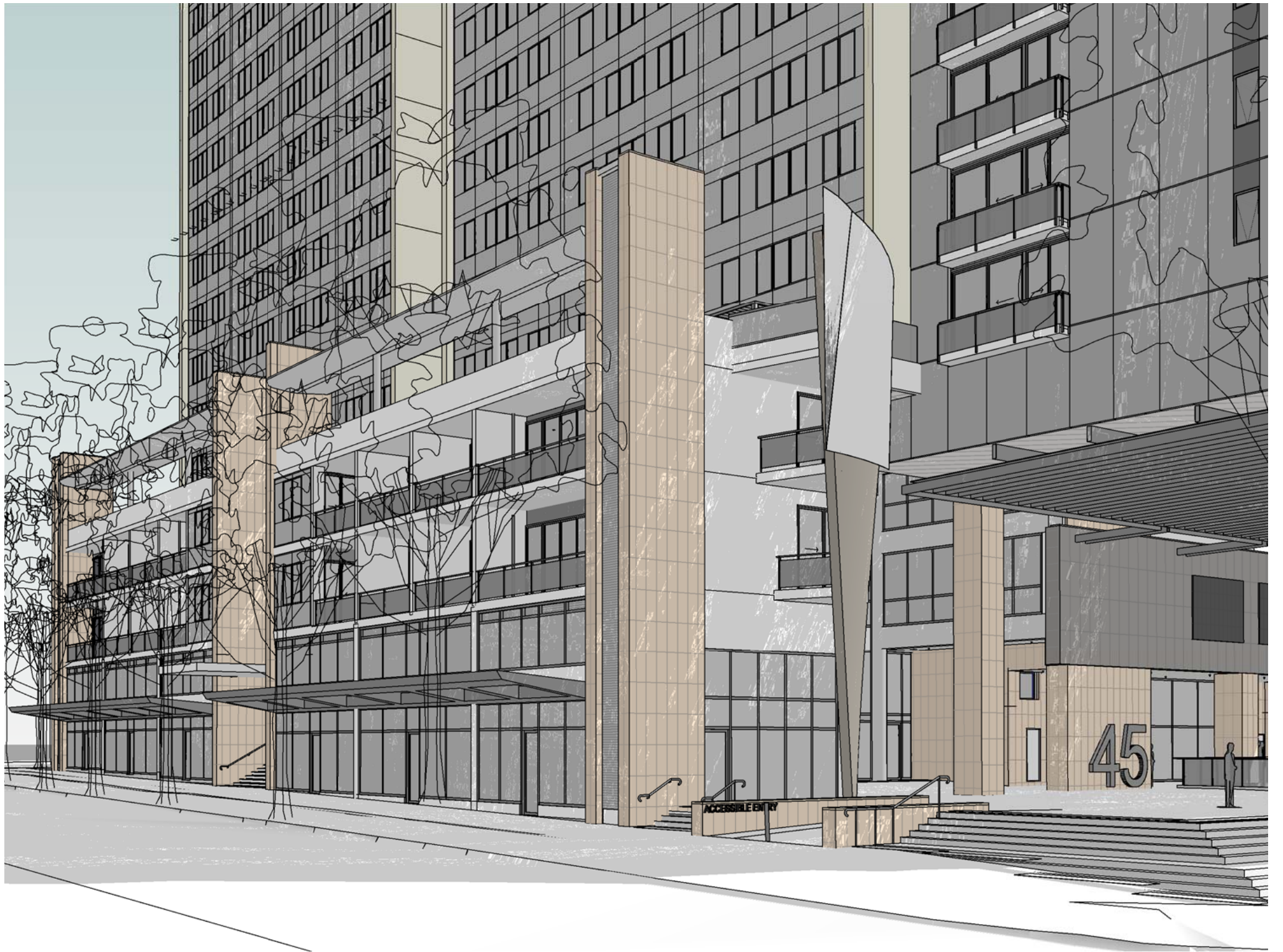


ARTIST IMPRESSION

PLANS/ SECTIONS/ ELEVATIONS 02



ARTIST IMPRESSION - HUNTER STREET
PLANS/ SECTIONS/ ELEVATIONS 02



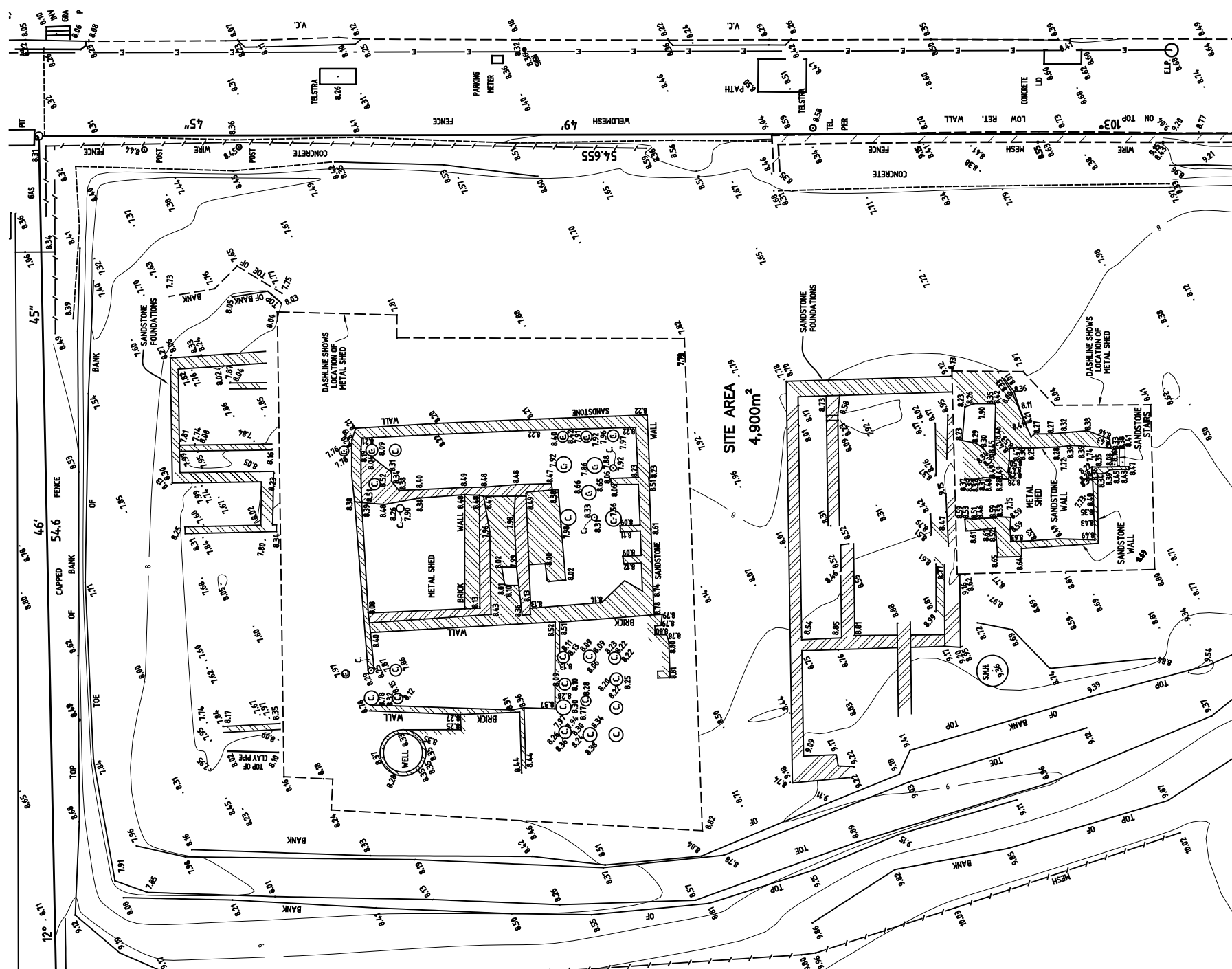
ARTIST IMPRESSION - MARSDEN STREET
PLANS/ SECTIONS/ ELEVATIONS 02



Elevated photo looking east over the revealed archaeology during the 2005 excavations.



Part of the archaeological heritage items on the site enclosed in a protective shed.



The timber floor of the hotel cellar, before the removal of the timber floor boards for conservation and the protective backfilling.



Layers of history revealed in the excavation included later alterations to the early 19 century buildings and reinforced concrete footings from a failed 1970s office development on the site.

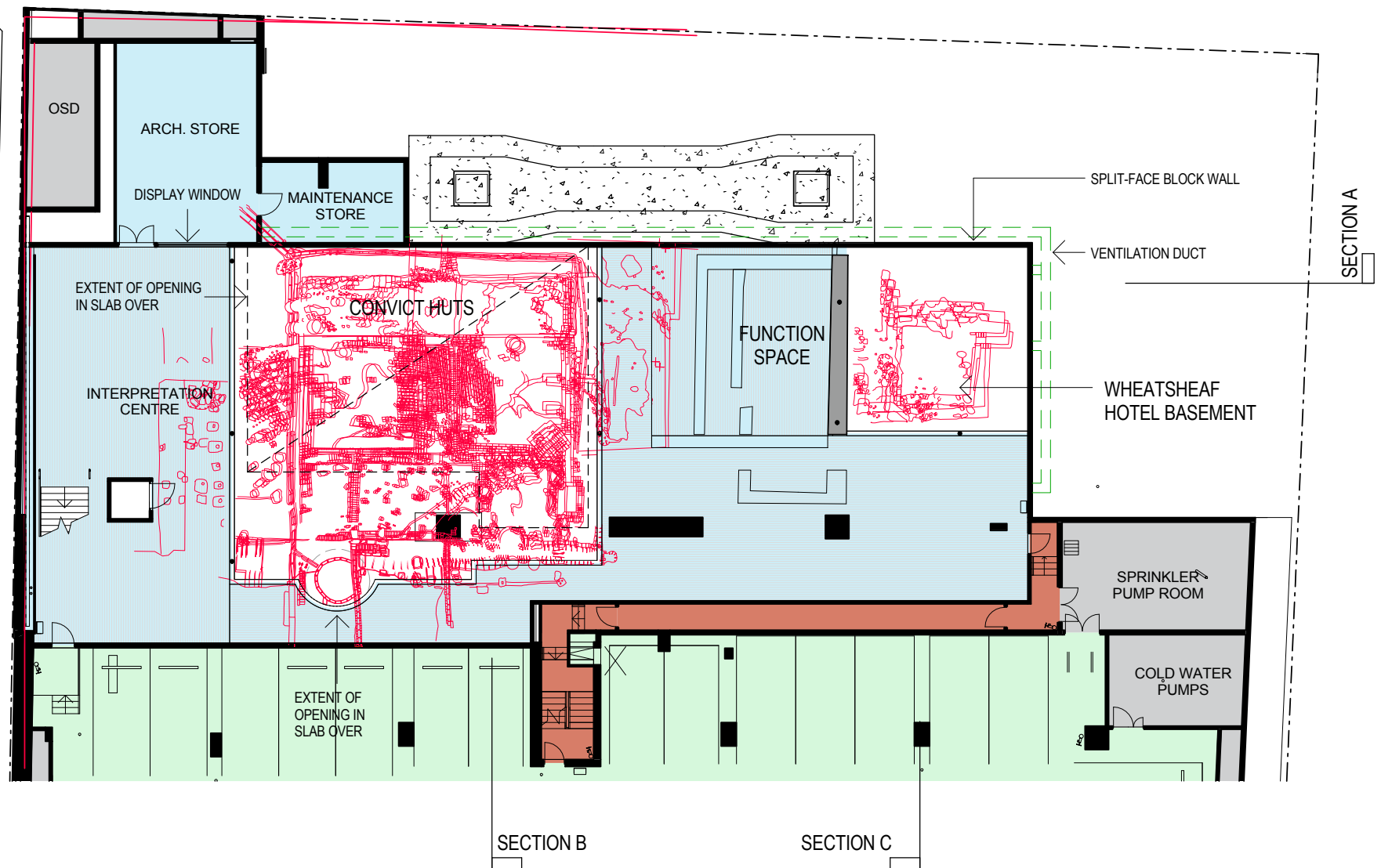
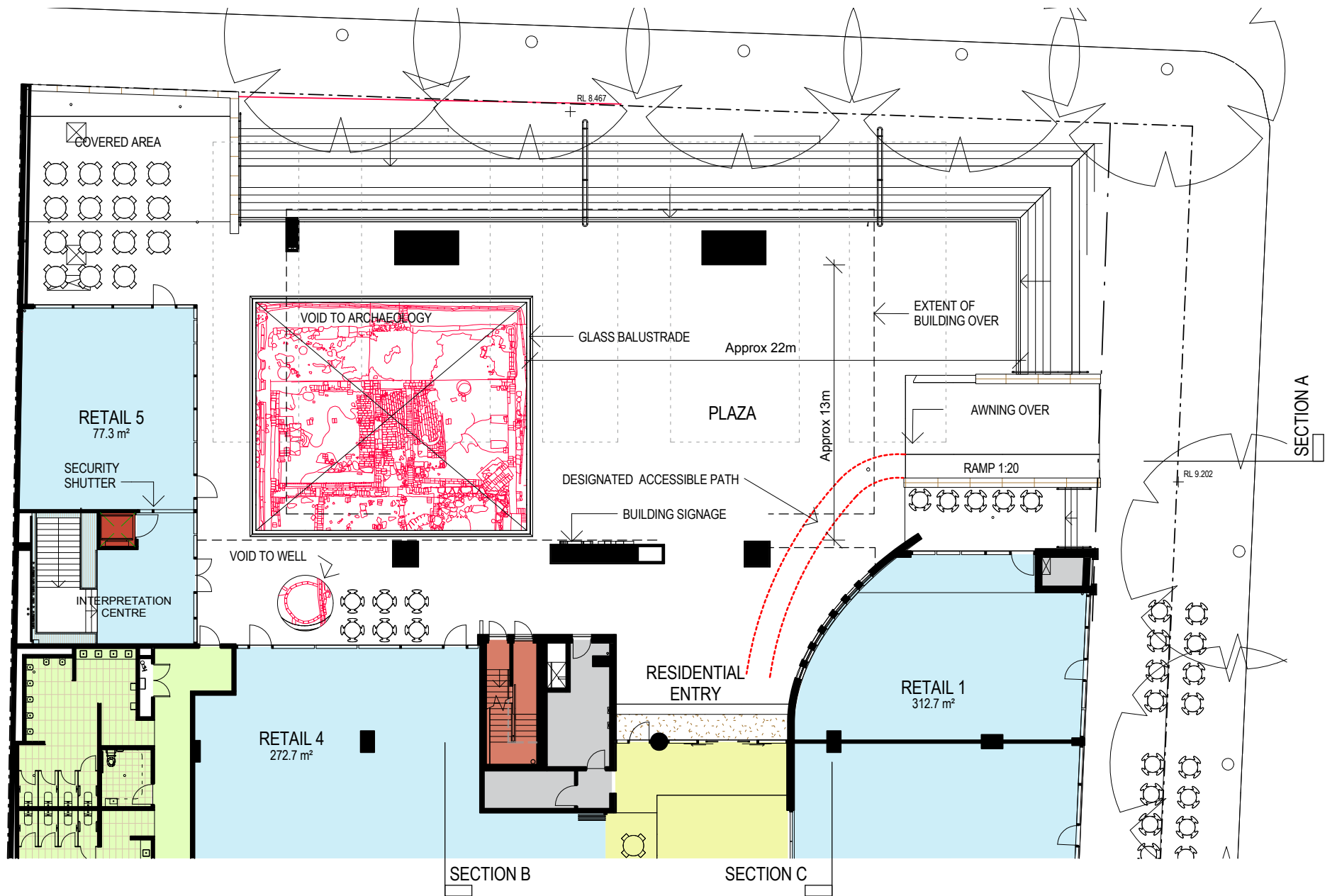


Remnants of the 1830s cottage and its later extensions.



N scale 1:200

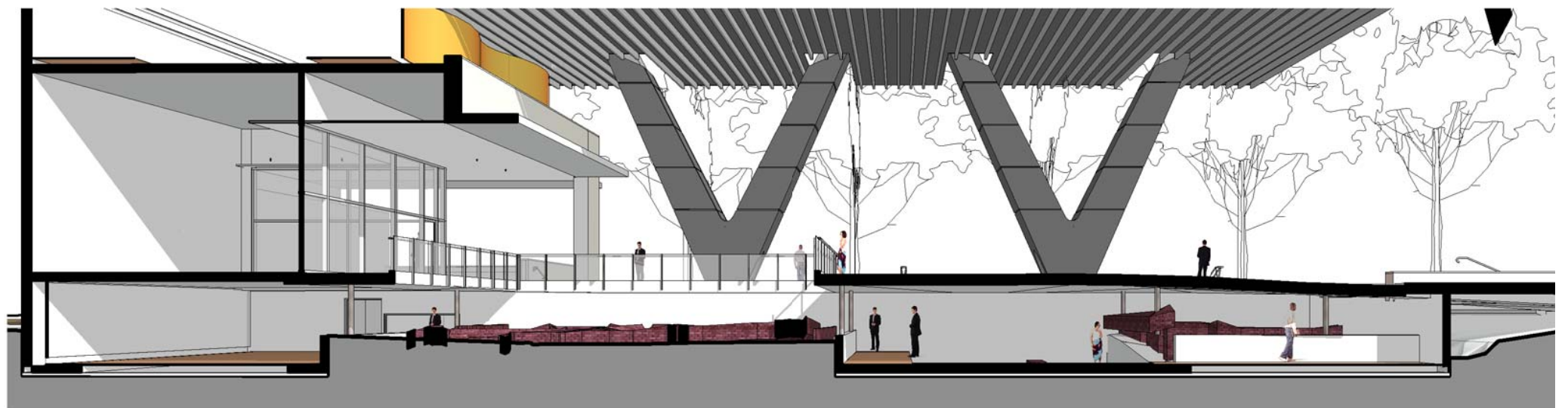
PLANS
ARCHAEOLOGY 03



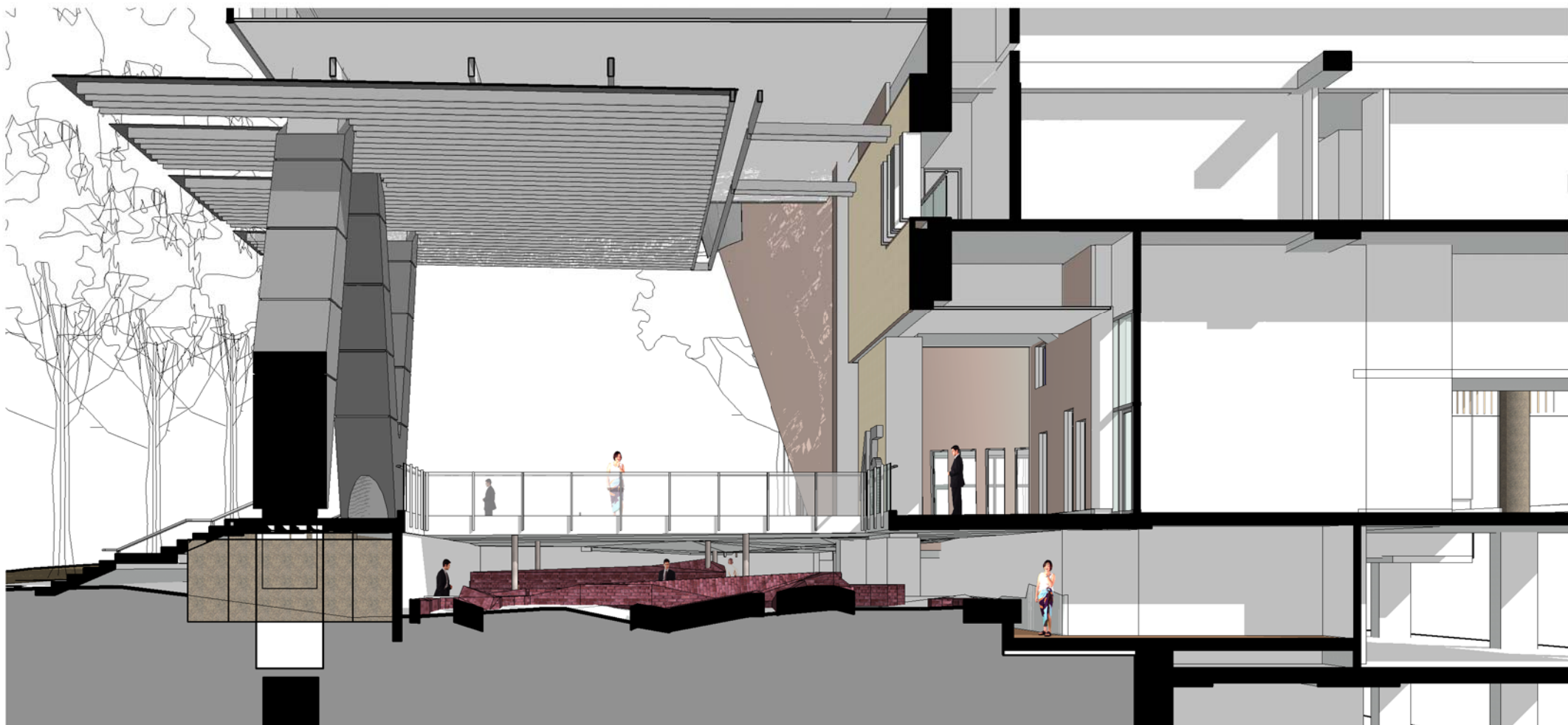
scale 1:250

PLANS

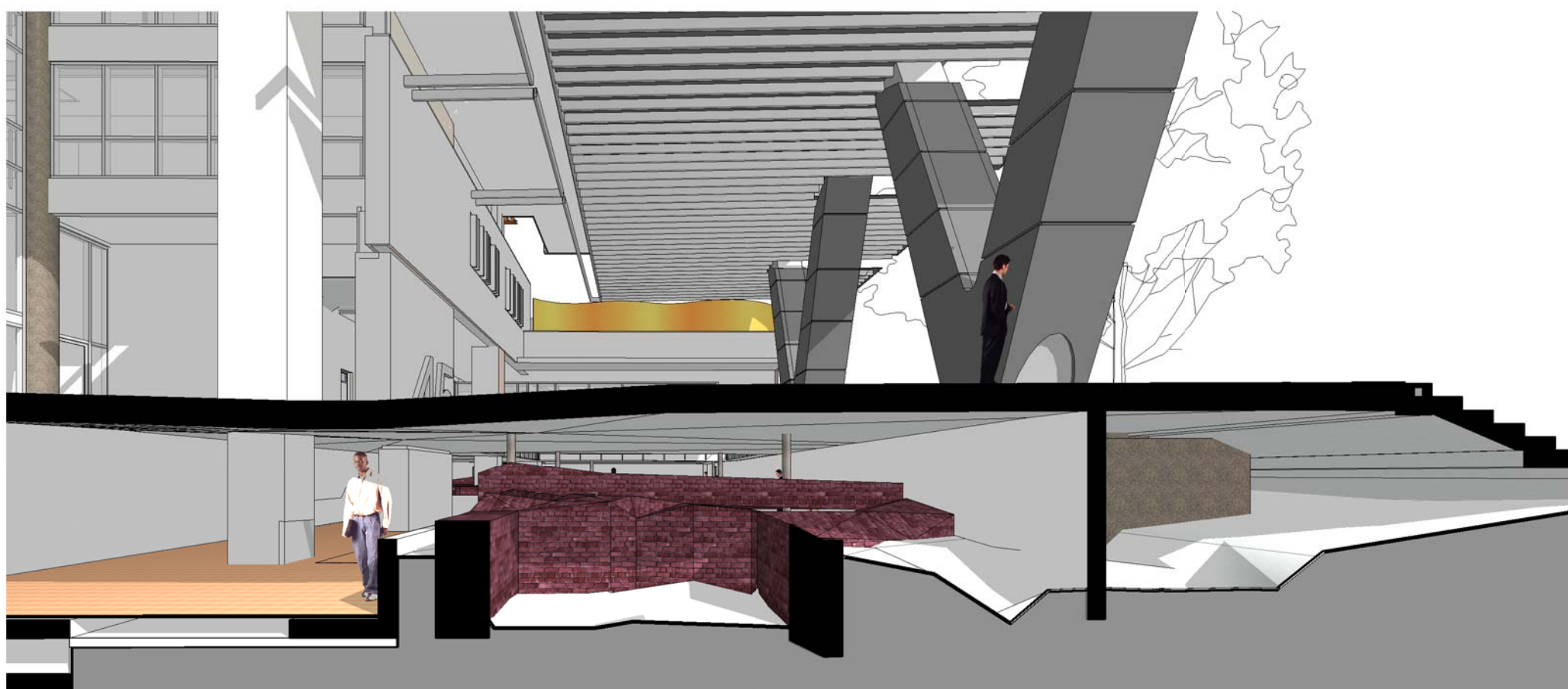
ARCHAEOLOGY 03



Section A



Section B



Section C

SECTION B + SECTION C
ARCHAEOLOGY 03