

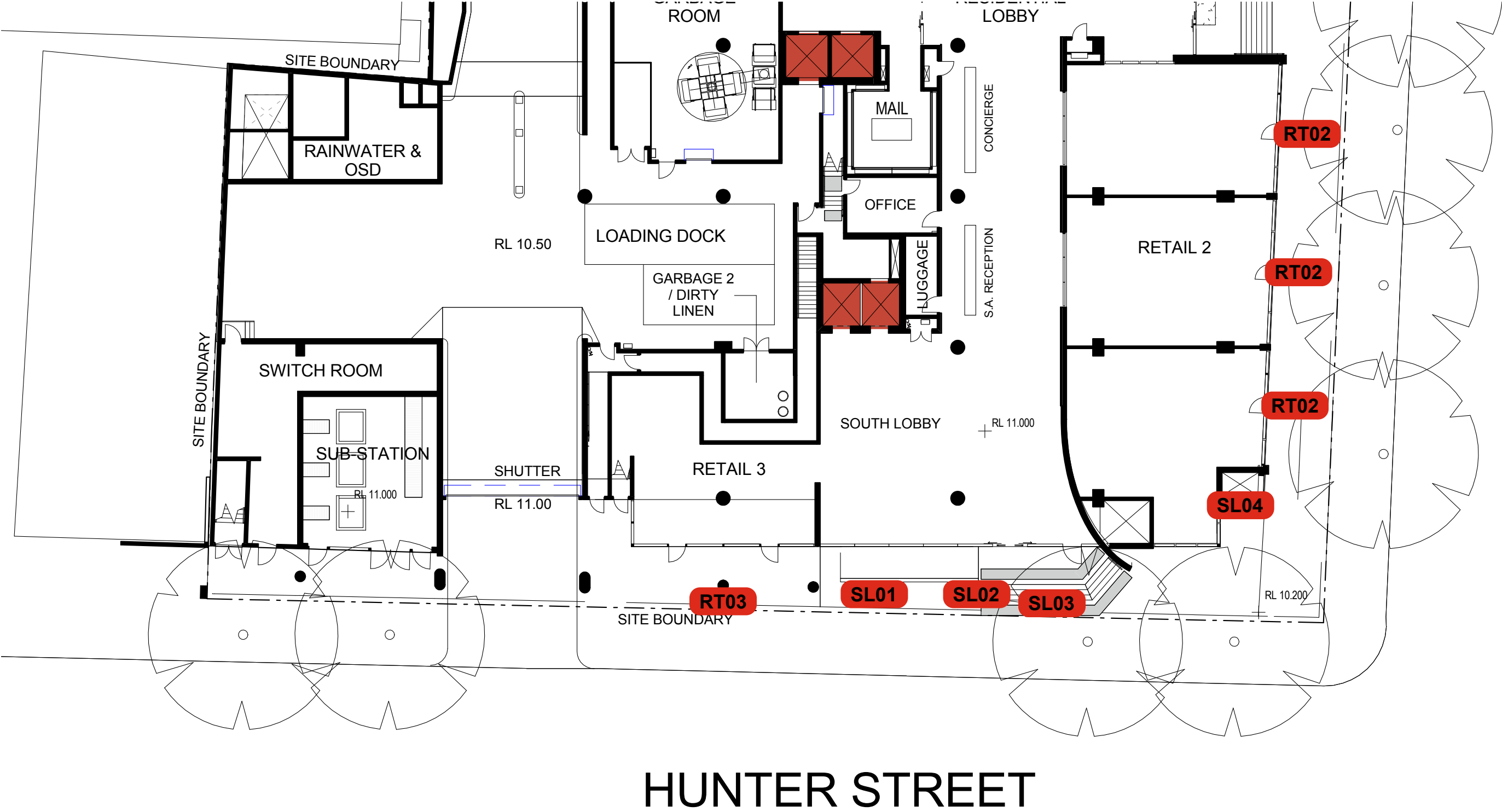
General Exterior Signage  
for the  
V by Crown Development



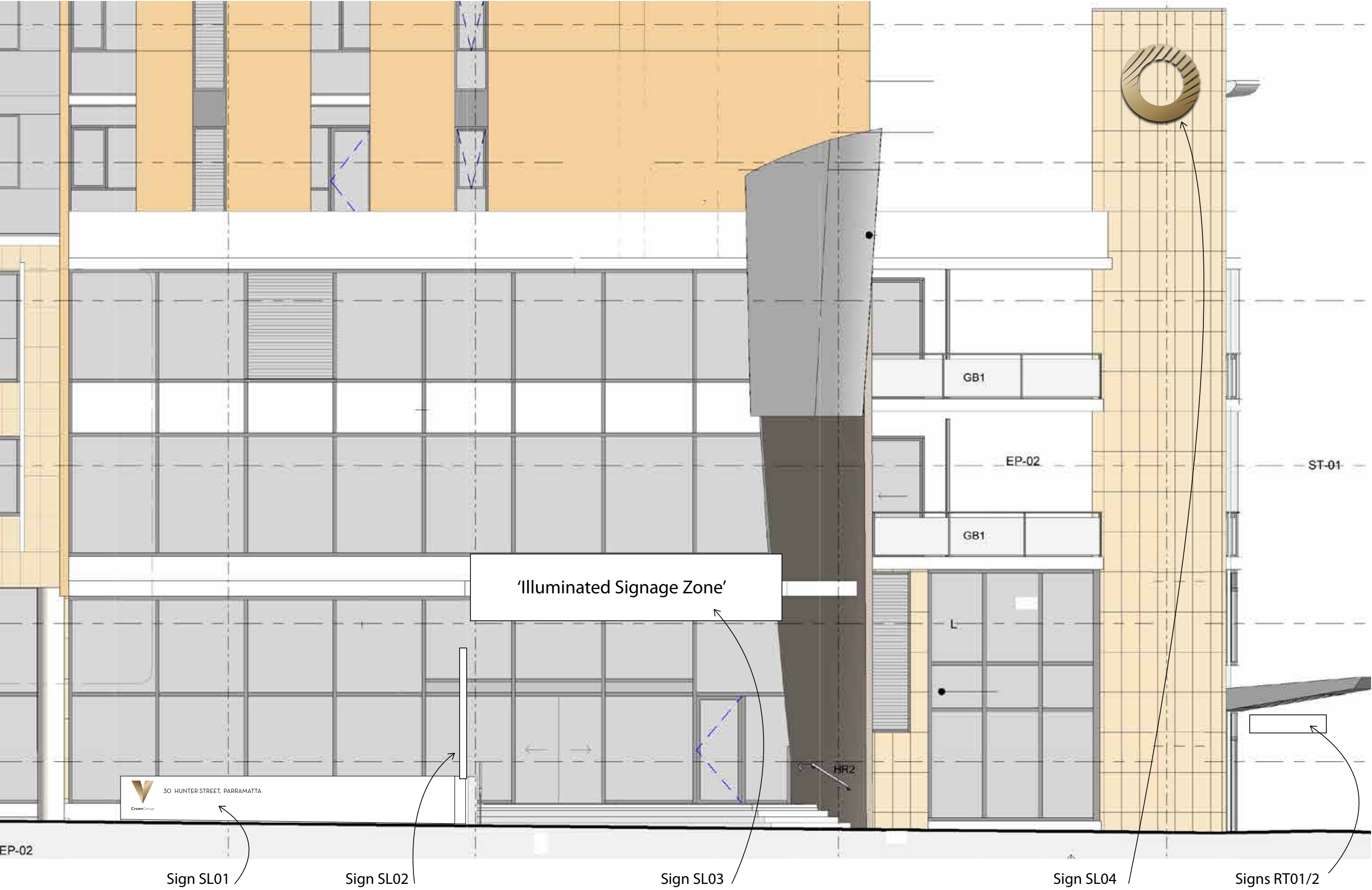
**ISSUES** Revisions to previous issue are either in underline (additional/amended) or ~~strikethrough~~ (deleted) text.

Issue	Date	Reason for Issue	Comment	Checked	Approved
A	16/06/15	Text and artwork revisions to SL01 (pg7), NL01 (pg13), NL02 (pg14) Sign SK02 (DELETED)			
B	07/07/15	Artwork updated signs SL01, SL02, SL03, NL01, NL02, SK01			
C	04/08/15	Signs SL03 (page 8) and SK01 (page 16), reference to 'Crown' deleted from message note			
D	18/09/15	Crown Logo updated - signs SL01, SL02, NL01, NL02 Signs redesigned and resized to suite new cladding tile - NL01, NL02, NL03, RT05, RT06 New wayfinding signs added NL05, NL06			
E	10/11/15	Retail Sign RT05 removed	Retail Tenancy 5 has no signage		

# South Lobby



HUNTER STREET





Sign	SL01
Message	Street address
Visibility	From Hunter Street travelling east/west, short range
Description	Laser cut metal letters, sculptured 'V'
Lighting	None
Colour	Letters - Dark bronze metal finish 'V' - Light bronze
Fixing	Pin fixed to wall
Font	Neutra Text Book
Location	
Size	3000 mm wide x 700 mm high
Notes	

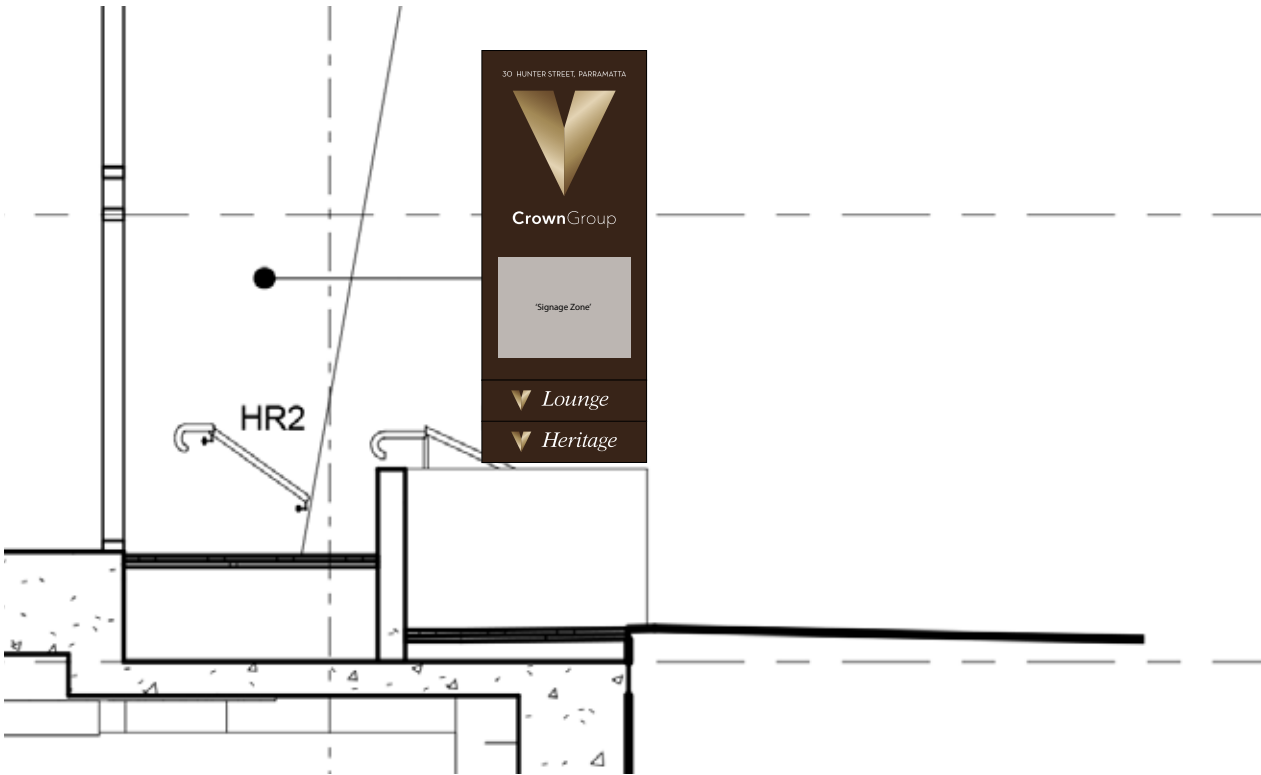
3000 mm





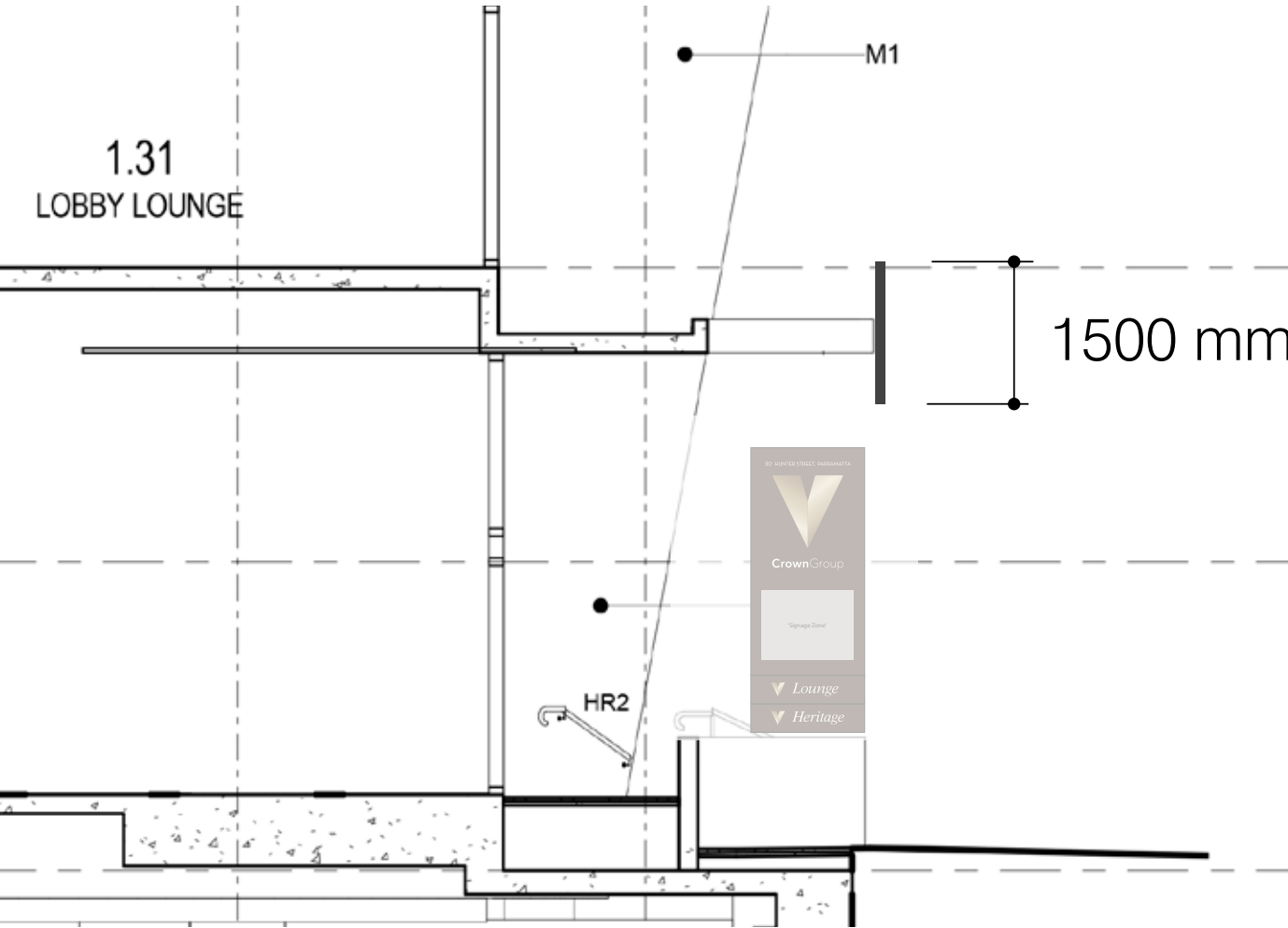


Sign	SL02
Message	Residential Name, V Heritage, V Lounge
Visibility	From Hunter Street looking west, medium range From Hunter Street looking east, medium range
Description	Double sided blade sign -
Lighting	Internally illuminated by neon
Colour	Dark bronze metal finish backing plate, light bronze/white coloured translucent lettering/symbols
Fixing	
Font	Neutra Text Book, Austin Italic
Location	
Description	1200 mm wide x 3000 mm high x 200 mm deep
Notes	240 v power supply required for 12 v transformer. Transformer to be concealed within 15 m of signage All 3 panels to be installed flush against each other to give an appearance of 1 sign Transformer to be accessible.

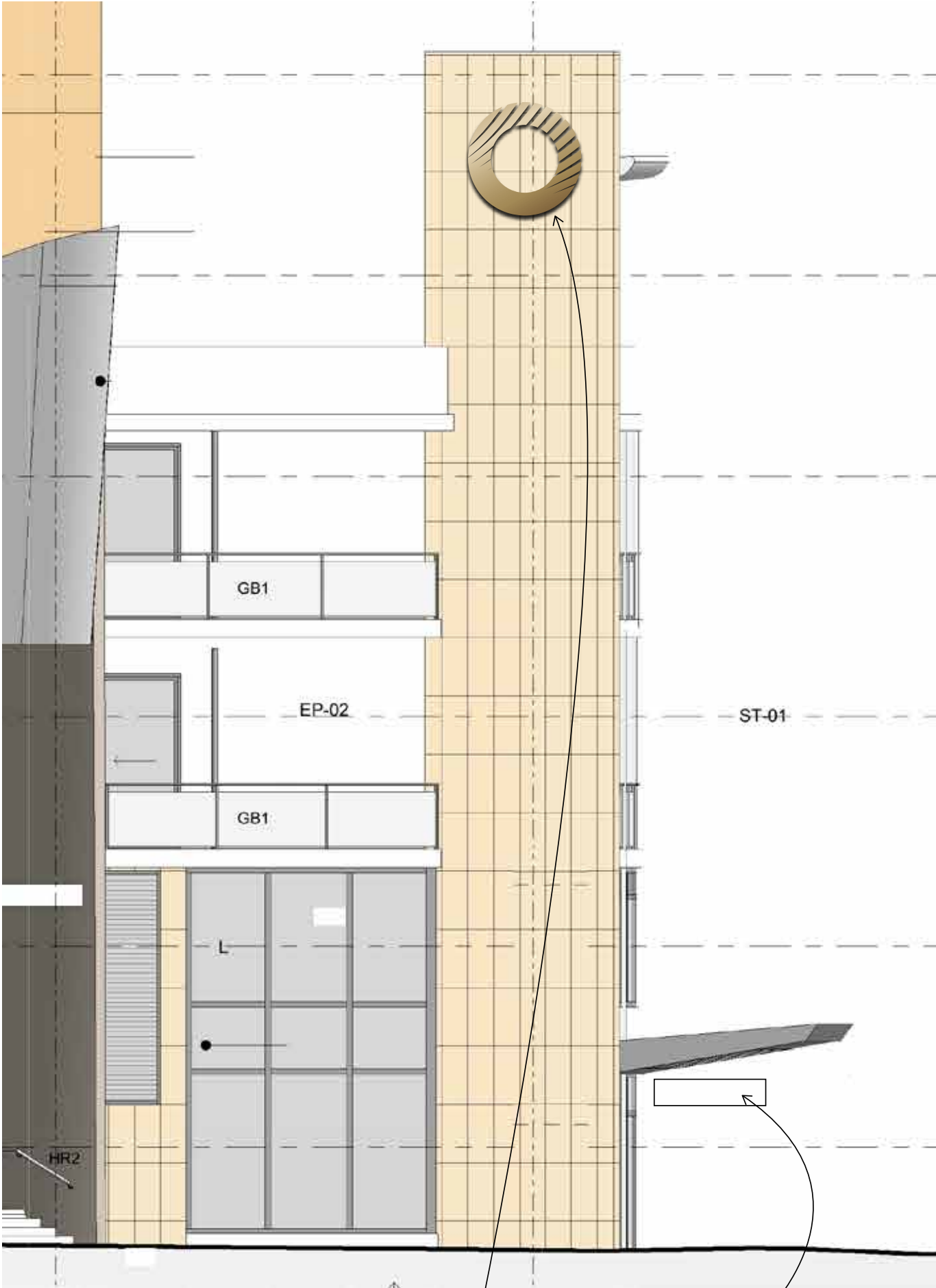




Sign	SL03
Message	TBA
Visibility	From Marsden Street travelling north, medium range From Hunter Street travelling east/west, short range
Description	
Lighting	
Colour	
Fixing	
Font	
Location	Centre sign on slab edge
Size	Overall sign approx 7000 mm x 1500 mm by 175 mm deep.
Notes	240 v power supply required for 12 v transformer. Transformer to be concealed within 15 m of signage. Transformer to be accessible.







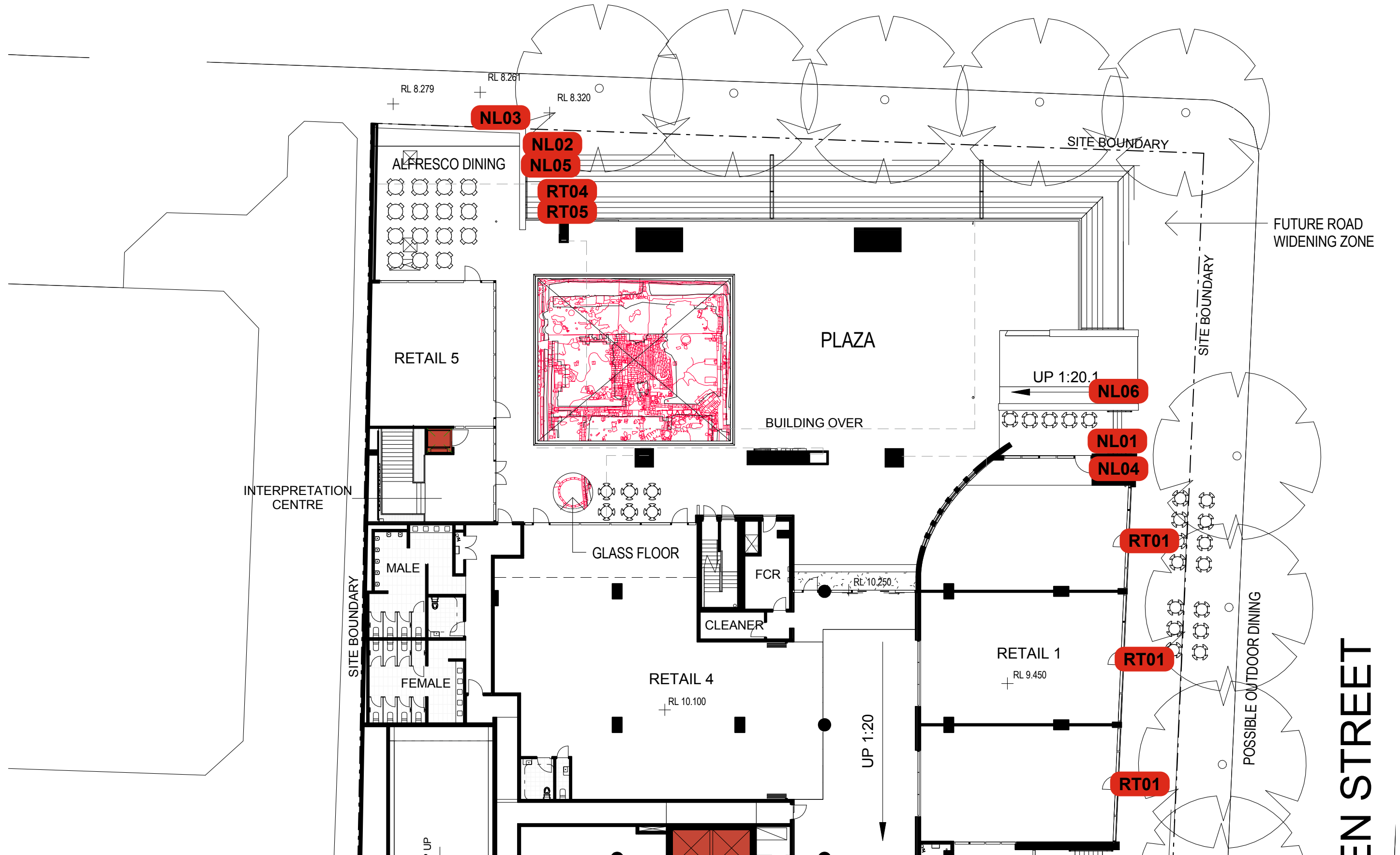
Sign SL04

Signs RT01/2

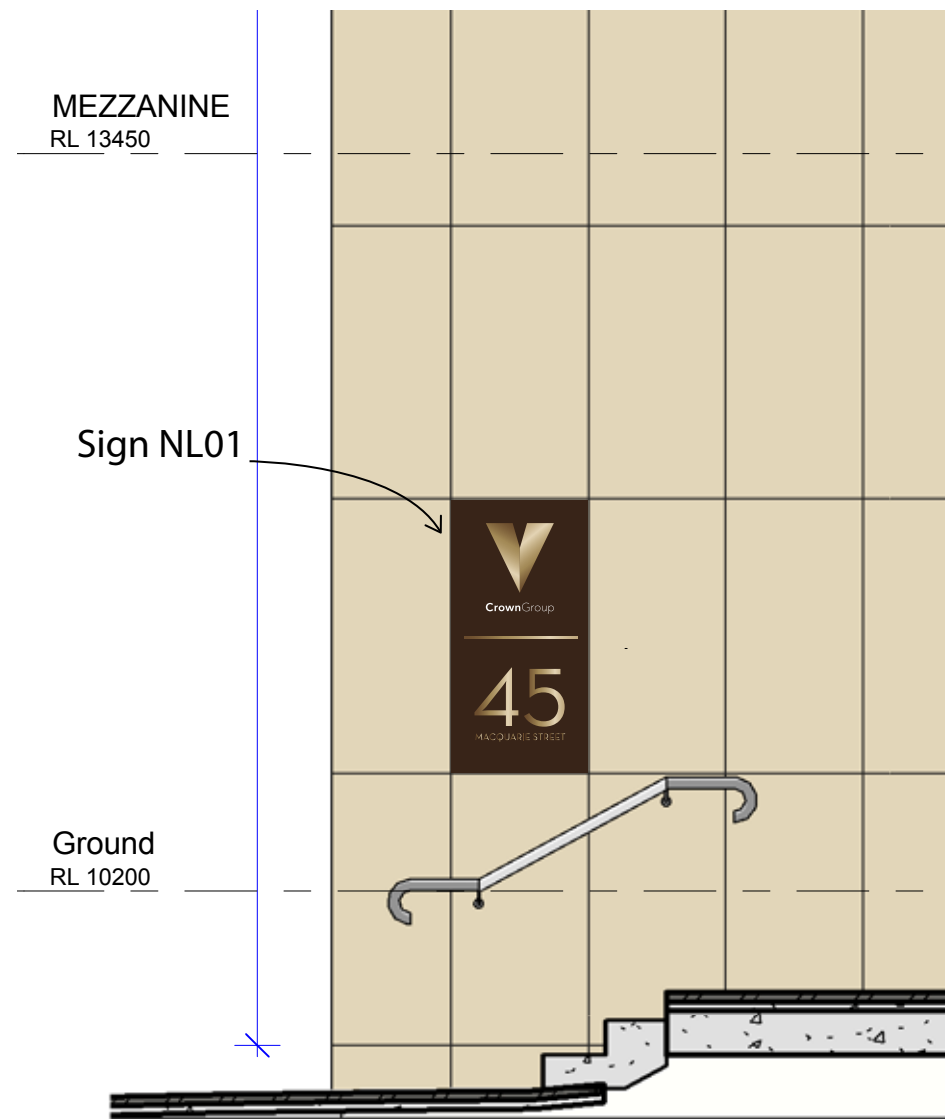
Sign	SL04
Message	Crown 'O' symbol
Visibility	From Marsden Street travelling north, long range From Hunter Street travelling west, short range
Description	Three dimensional 'O'
Lighting	Neon internal + halo light
Colour	Crown 'O' Symbol - Gold cmyk gradient - testing required
Fixing	
Font	
Location	
Size	1750 mm wide x 1750 mm high x 120 mm deep
Notes	240 v power supply required for 12 v transformer. Transformer to be concealed within 15 m of signage. Transformer to be accessible.

# North Lobby

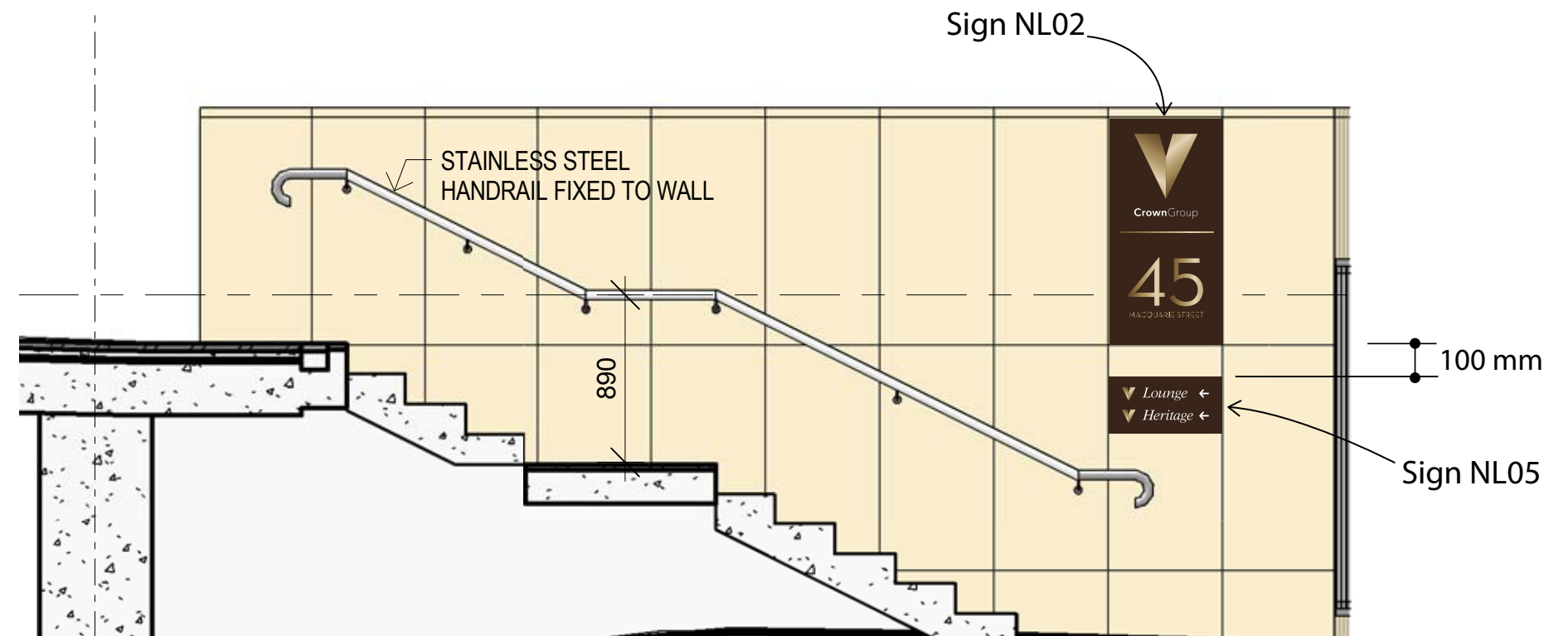
# MACQUARIE STREET



## Sign NL01 and NL02

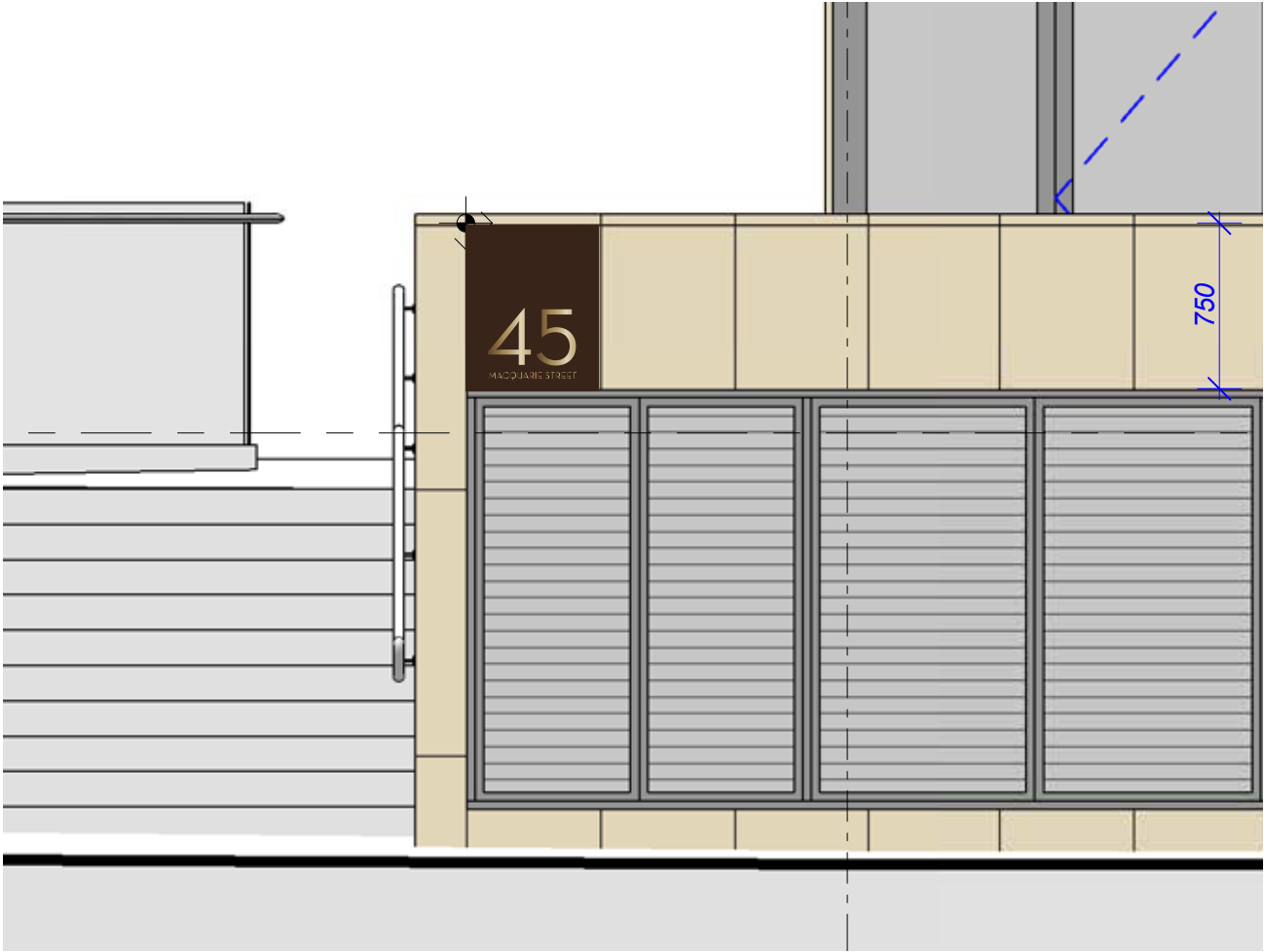


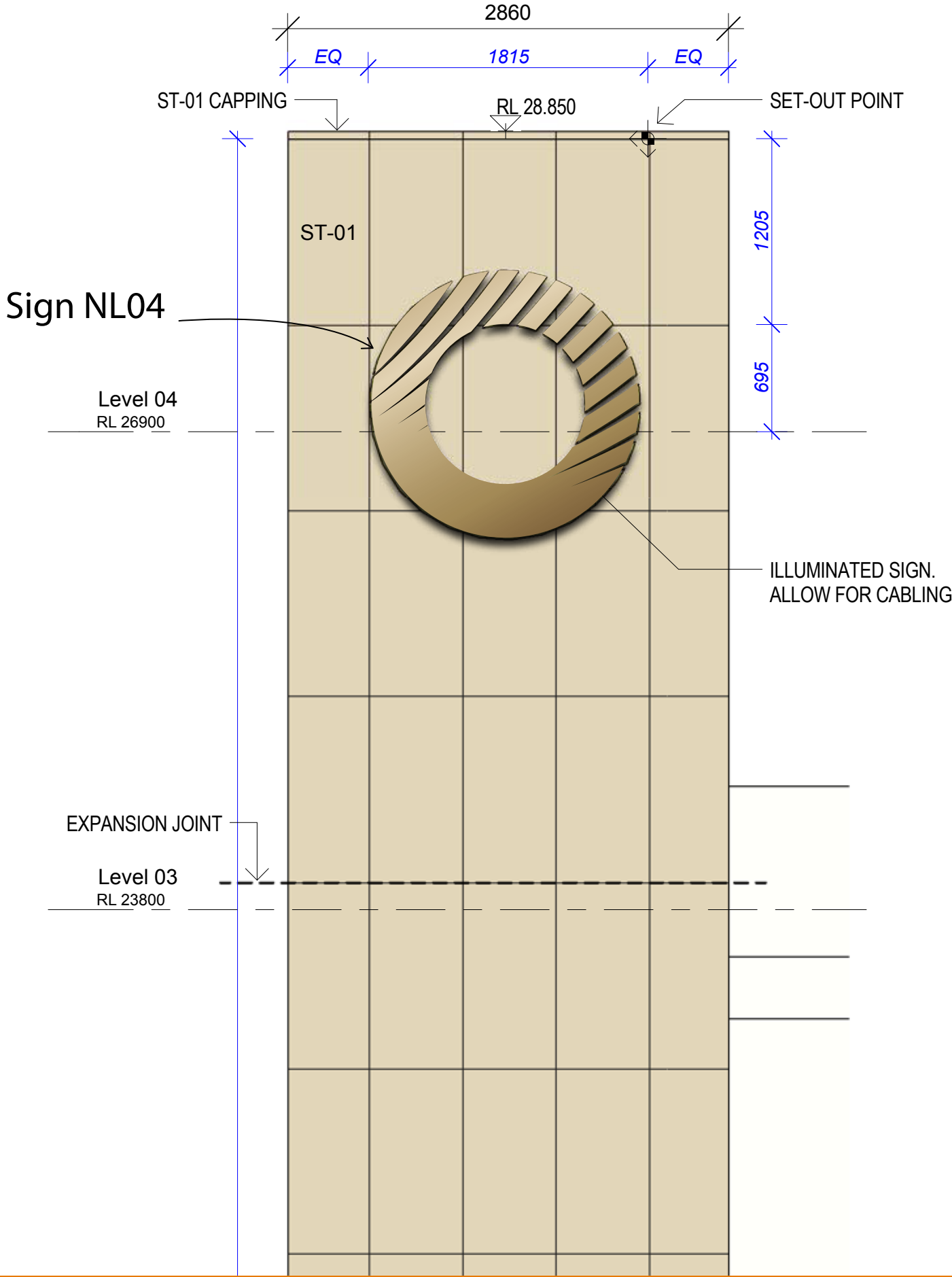
<b>Sign</b>	NL01 and NL02
<b>Message</b>	Residential Name and Street Address
<b>Visibility</b>	From Macquarie Street as a pedestrian, short range From Marsden Street looking south, medium range
<b>Description</b>	Sculptured light bronze 'V', numbers and letters on dark bronze plate
<b>Lighting</b>	none
<b>Colour</b>	
<b>Fixing</b>	
<b>Font</b>	Neutra Text Book, Austin Italic
<b>Location</b>	Replace one cladding tile as shown
<b>Size</b>	Plate 600 mm wide x 1200 mm high
<b>Notes</b>	Sign dimensions to suite ST1 porcelain/stone tile Check dimensions on site Sign back plate set flush with porcelain/stone tile Material options to be investigated





Sign	NL03
Message	Street Address
Visibility	From Macquarie Street as a pedestrian, short range
Description	Light bronze numbers and letters on dark bronze plate
Lighting	none
Colour	
Fixing	
Font	Neutra Text Book
Location	To replace 1 porcelain/stone tile
Size	Plate 600 mm wide x 750 mm high
Notes	Sign dimensions to suite ST1 porcelain/stone tile Sign back plate set flush with porcelain/stone tile Material options to be investigated



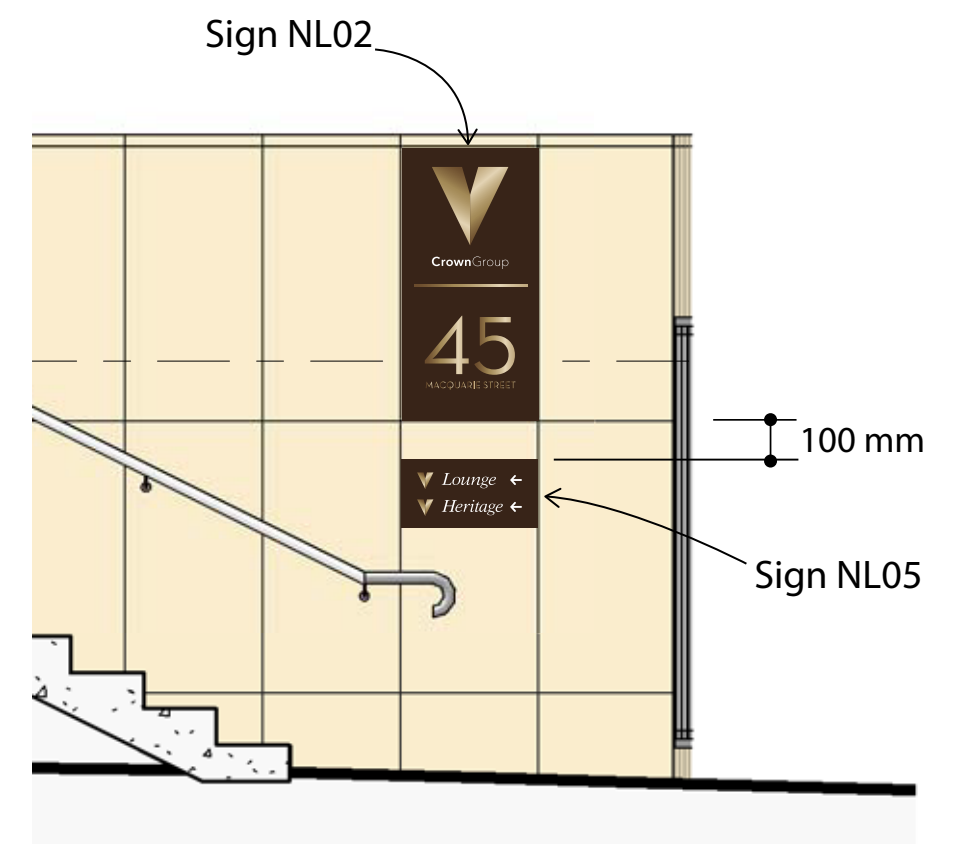
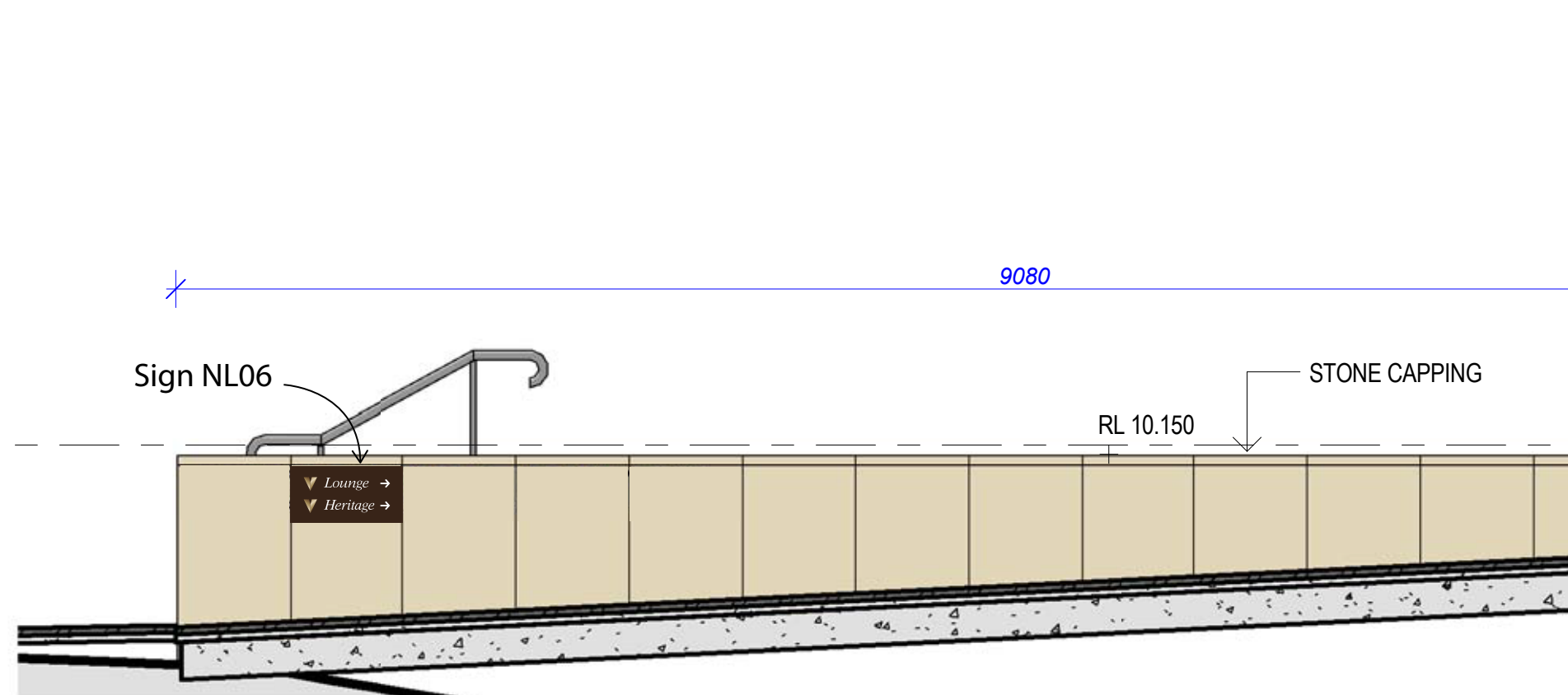


Sign	NL04
Message	Crown 'O'
Visibility	From Marsden Street travelling south, long range From Macquarie Street travelling west, short range
Description	Three dimensional 'O'
Lighting	Neon internal + halo light
Colour	Crown 'O' Symbol - Gold cmyk gradient - testing required
Fixing	
Font	
Location	
Size	1750 mm wide x 1750 mm high x 120 mm deep
Notes	240 v power supply required for 12 v transformer. Transformer to be concealed within 15 m of signage. Transformer to be accessible.

## Sign NL05 and NL06

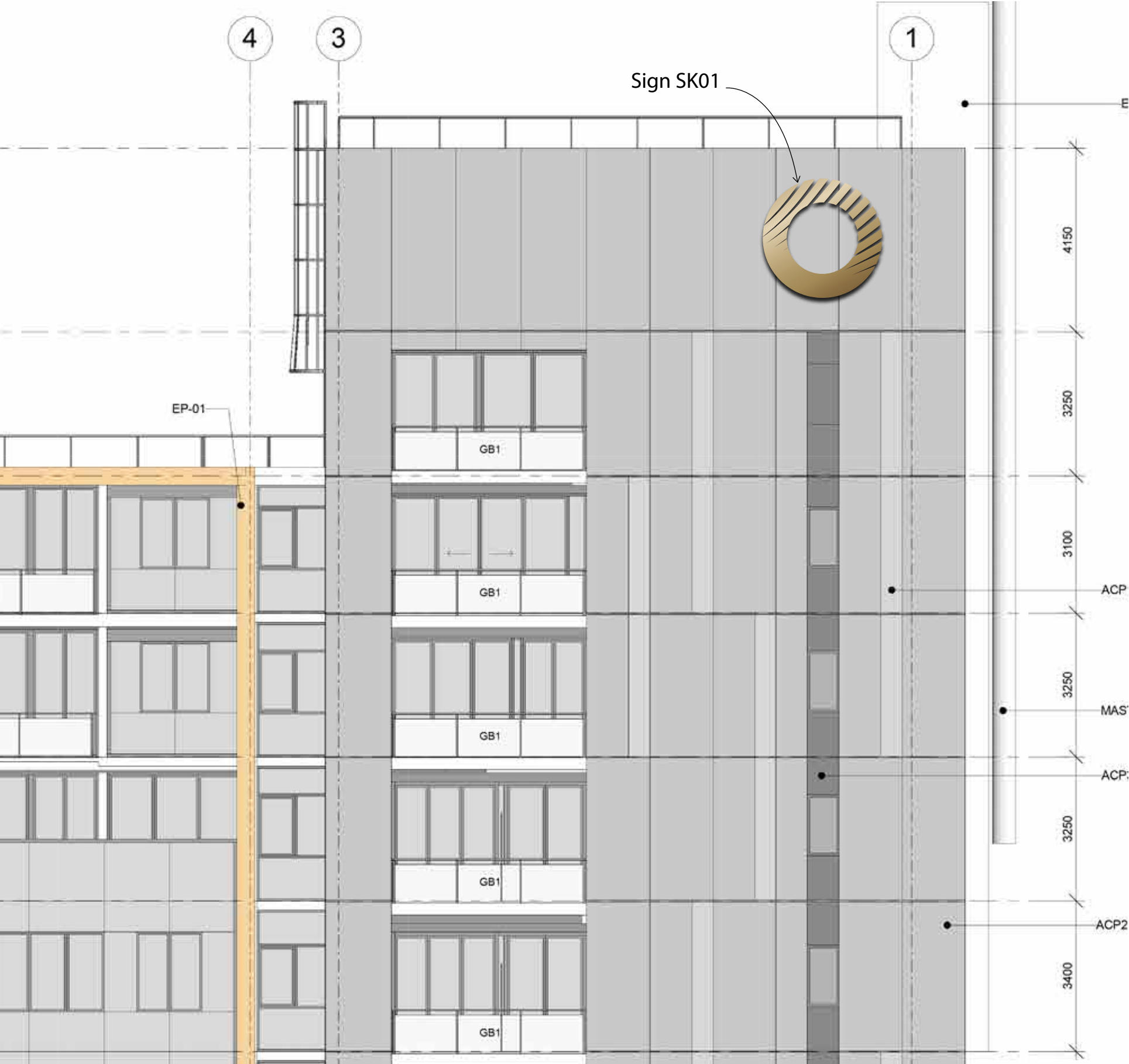


<b>Sign</b>	NL05 and NL06
<b>Message</b>	Wayfinding for V Lounge and V Heritage
<b>Visibility</b>	From Macquarie Street/Marsden Street as a pedestrian, short range
<b>Description</b>	Light bronze numbers and letters on dark bronze plate
<b>Lighting</b>	none
<b>Colour</b>	
<b>Fixing</b>	
<b>Font</b>	Neutra Text Book, Austin Italic
<b>Location</b>	Partially replace porcelain/stone tile as shown
<b>Size</b>	Plate 600 mm wide x 300 mm high
<b>Notes</b>	<p>Sign dimensions to suite ST1 porcelain/stone tile</p> <p>Check dimensions on site</p> <p>Sign back plate set flush with porcelain/stone tile</p> <p>Material options to be investigated</p> <p>Sign NL05 arrows point to left</p> <p>Sign NL06 arrows point to right</p> <p>These signs are to be constructed and installed in such a way as to be easily updated/replaced should the message change</p>

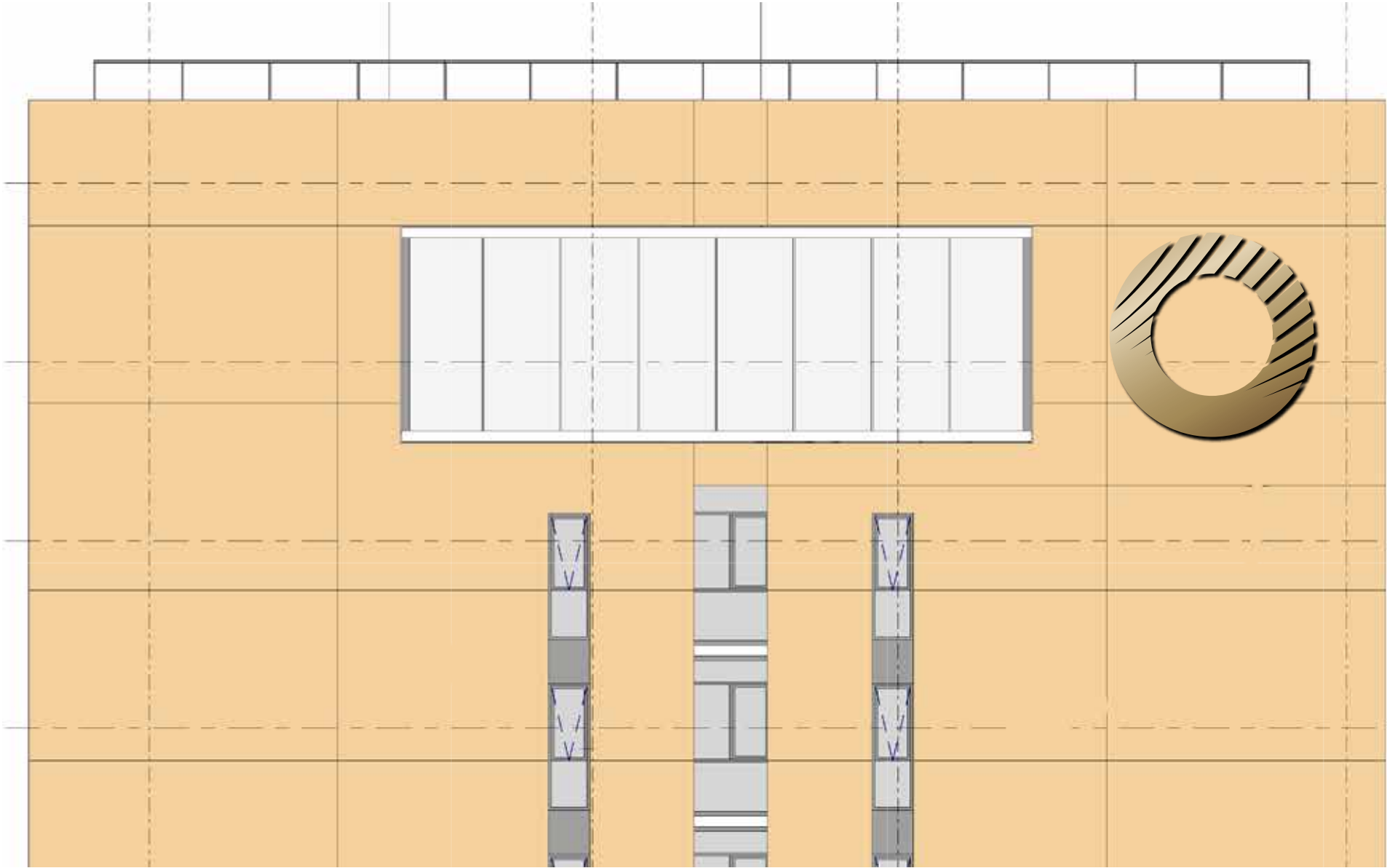




# Sky Signs



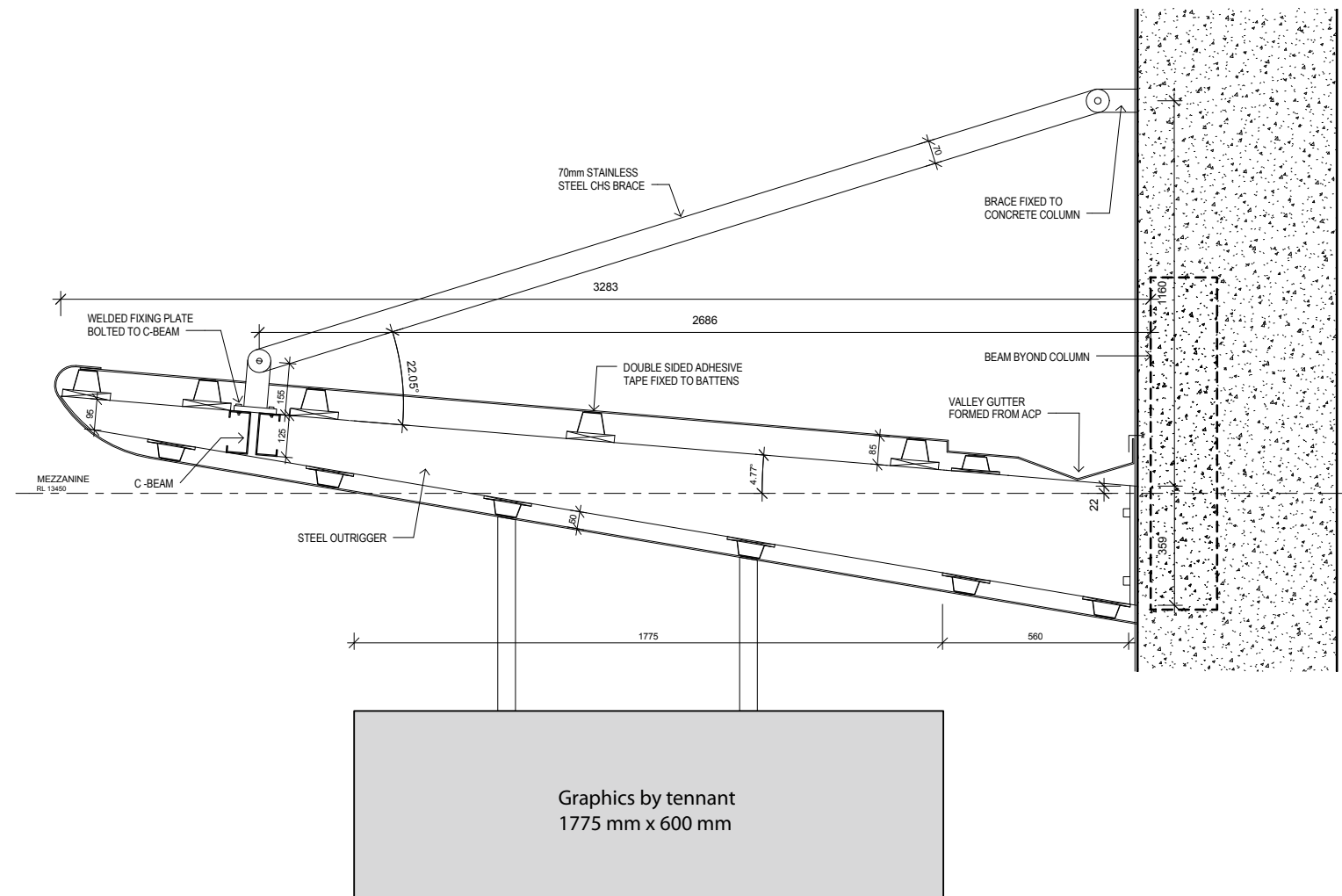
Sign	SK01
Message	Crown 'O' symbol
Visibility	Sky sign - visible from east of Marsden Street - long range
Description	Three dimensional 'O'
Lighting	Internal + halo lighting
Colour	Crown 'O' symbol - Gold cmyk gradient - testing required
Fixing	
Font	
Location	Vertically center on top panel of curtain wall (2075 mm from top edge) Horizontally centre on verticle window strip
Size	Overall - 2700 mm wide x 2700 mm high
Notes	240 v power supply required for 12 v transformer. Transformer to be concealed within 15 m of signage. Transformer to be accessible.



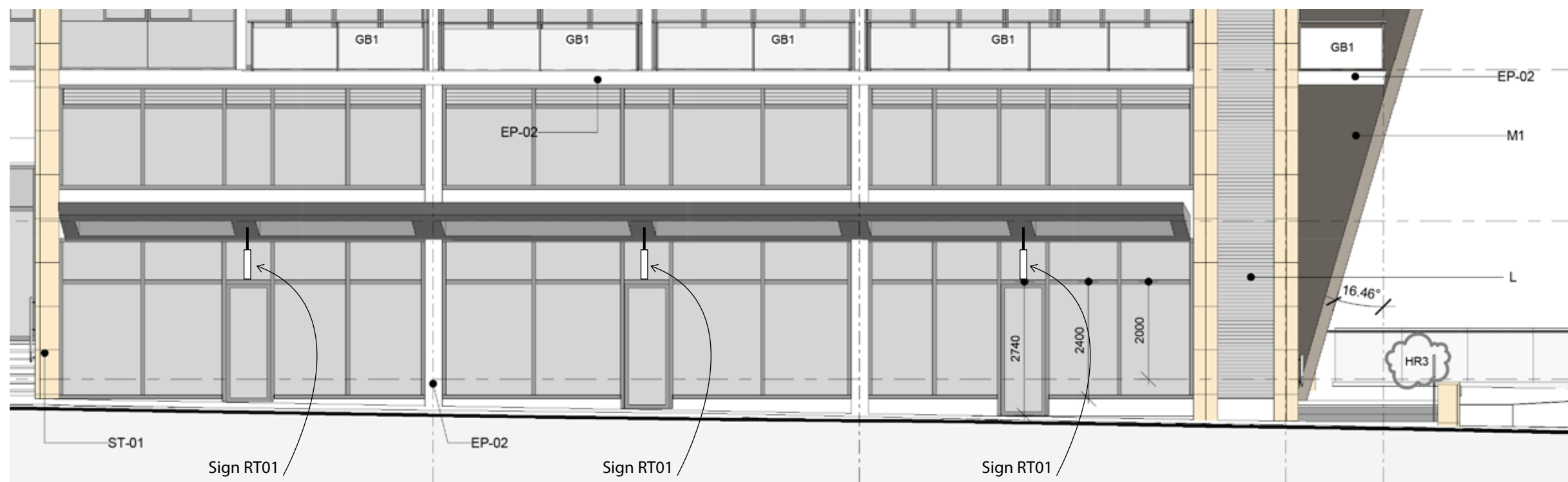
Sign	SK03
Message	Crown 'O' symbol
Visibility	Sky sign - visible from south of Hunter Street - long range
Description	Three dimensional 'O'
Lighting	Internal + halo lighting
Colour	Crown 'O' Symbol - Gold cmyk gradient - testing required
Fixing	
Font	
Location	
Size	3900 mm wide x 3900 mm high
Notes	240 v power supply required for 12 v transformer. Transformer to be concealed within 15 m of signage. Transformer to be accessible.

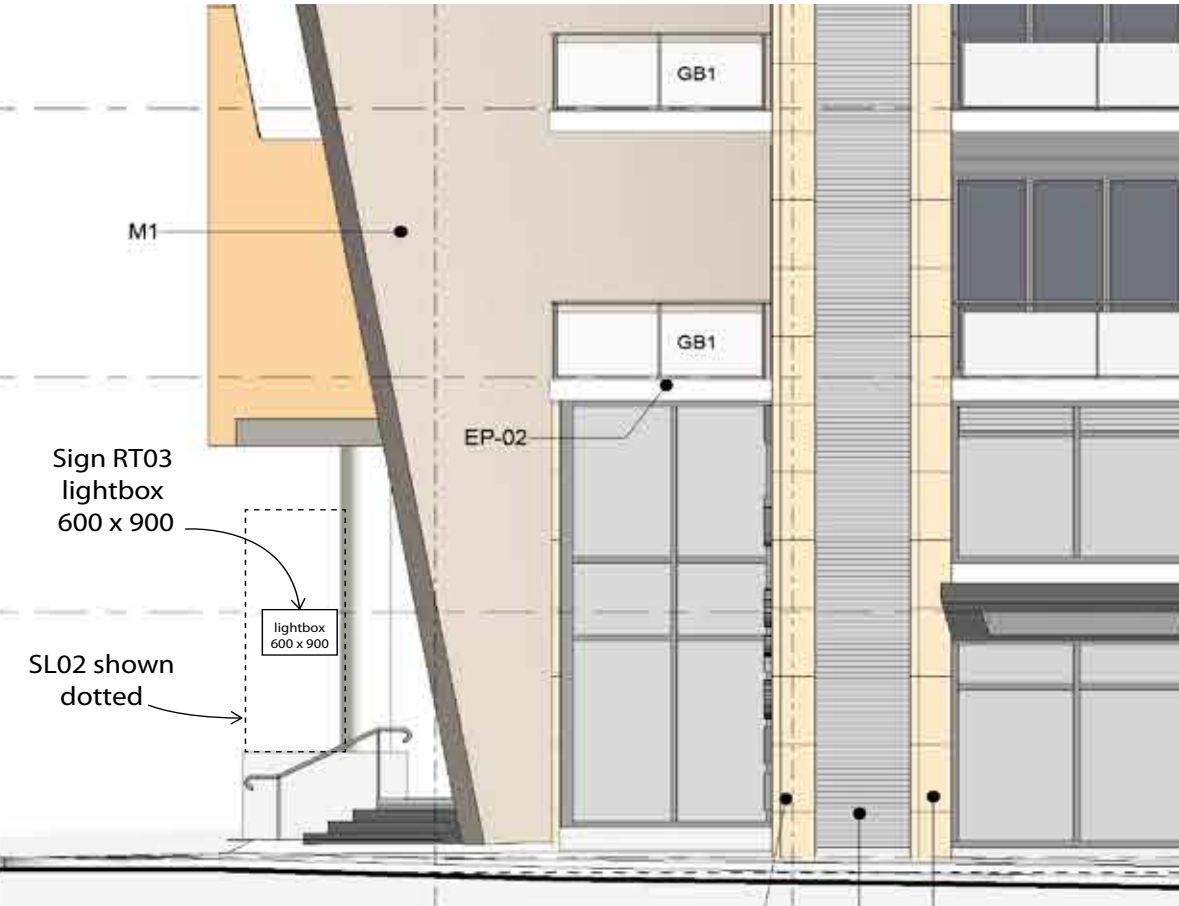
# Retail Signs

## Retail Tenancies 1 + 2

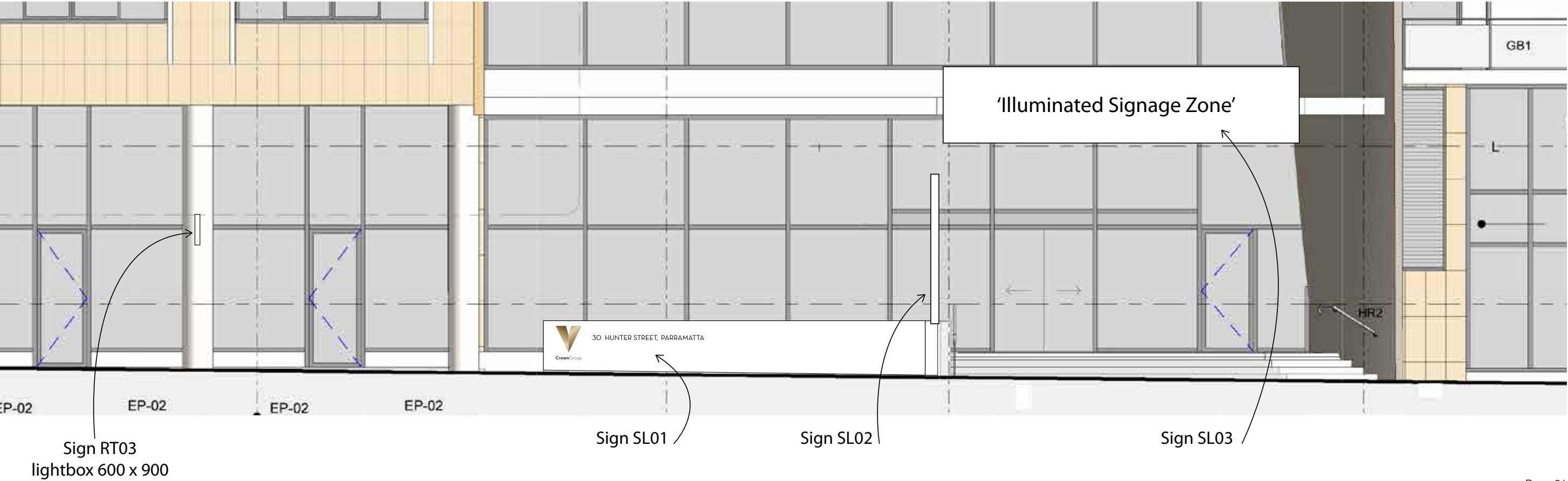


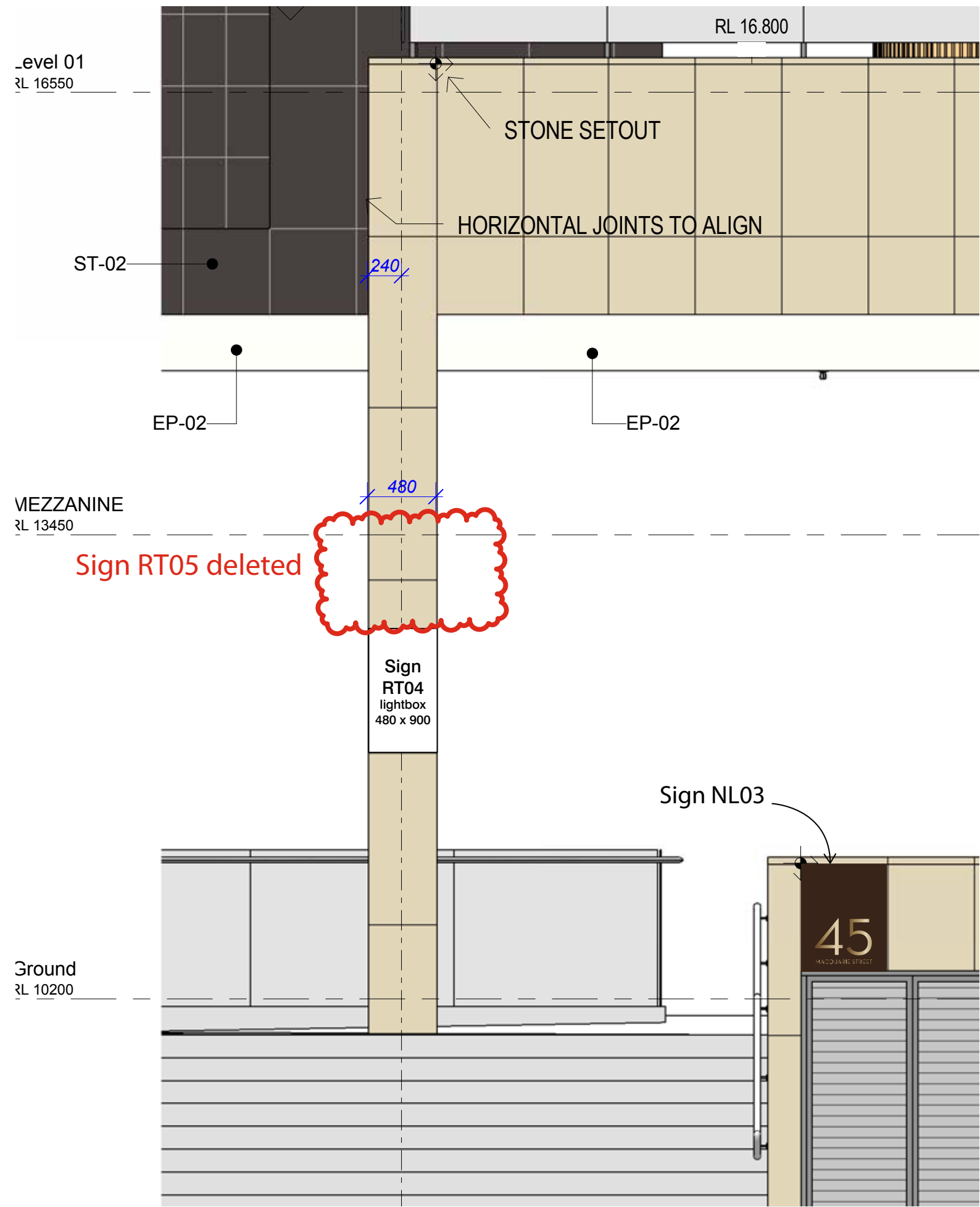
<b>Sign</b>	RT01, RT02 - Retail tenancies 1 + 2, awning signage
<b>Message</b>	By Tennant
<b>Visibility</b>	From Marsden Street looking north and south, medium range.
<b>Description</b>	Double sided slimline lightbox suspended from awning above. Width of lightbox to match glazed section of awning above. One lightbox centred on each retail entry - total six lightboxes.
<b>Lighting</b>	Internally illuminated
<b>Colour</b>	Metal frame to match awning
<b>Fixing</b>	
<b>Font</b>	
<b>Location</b>	Lightbox centred on solid panel in awning above door. Bottom of lightbox to align with top of door.
<b>Size</b>	1775 mm wide x 600 mm high
<b>Notes</b>	





Sign	RT03 - Retail tenancy 3, column signage
Message	By Tennant
Visibility	From Hunter Street looking east and west, medium range.
Description	Double sided slimline lightbox fixed perpendicular to southern edge of column.
Lighting	Internally illuminated
Colour	Metal frame to match awning
Fixing	
Font	
Location	As shown. Bottom edge of sign approx 2400 mm above ground level
Size	Each 900 mm wide x 600 mm high approx
Notes	Power supply required.





Sign	RT04 - Retail tenancy 4, column signage
Message	By Tennant
Visibility	From Macquarie Street looking east and west, medium range.
Description	Single sided slimline lightbox fixed to northern face of column, one above the other. Lightbox to partially replace one stone cladding tiles Lightbox to be flush with stone cladding
Lighting	Internally illuminated
Colour	Metal frame to match stone cladding
Fixing	
Font	
Location	As shown
Size	480 mm wide x 900 mm high approx
Notes	Power supply required to each individual lightbox.  Tenancy 5 no longer has any signage