

45 Macquarie Street Parramatta MOD4 SHI Report
6 August 2014

Ms Kim Shmuel
Principal Planner
JBA Urban Development Services
77 berry Street
NORTH SYDNEY NSW 2060



Dear Kim

Proposed Modification (MP09_0167 MOD4) Archaeological Display Precinct 45 Macquarie Street, Parramatta Statement of Heritage Impact

Further to our recent discussions and the most recent design changes with regard to the proposed access and below plaza accommodation provisions for the in-situ archaeology, we have pleasure in providing this concise Statement of Heritage Impact for the relevant component of the proposed MOD4 modifications. Graham Brooks and Associates prepared the initial and subsequent Statements of Heritage Impact and have worked closely with the original Design Review Panel and the Archaeological display team. We have also briefed the NSW Heritage Council on the schematic interpretive display proposals.

Most importantly, the current MOD4 proposal does not include any detail on the proposed archaeological interpretive display. Details of this display and the associated conservation monitoring are to be separately examined and approved by the NSW Heritage Council in accordance with Condition E14A of MOD2 approval, dated 26 June 2014.

Subject Drawings

The relevant architectural drawings, as contained in the AJC Architectural Design Report, dated 01 August 2014, have been referred to in the preparation of this SHI report.

- Ground Floor Plan
- Basement 1 Plan
- Section A
- Section B
- Section C

Extracts of these drawings are reproduced overleaf.

Proposed Modifications

The proposed modifications at Plaza Level assessed in this SHI report are:

- Adequately sized Plaza Level Entry to basement level Interpretation Centre located in the south west corner of the Plaza
- Replacement of the former glass balustrade around the circular viewing hole above the basement level archaeological well, replaced with a circular glass floor panel set into a interpretative metal frame

71 York Street, Level 1
Sydney 2000 Australia
Tel: 61 2 9299 8600
Fax: 61 2 9299 8711
gbamain@gbaheritage.com
www.gbaheritage.com

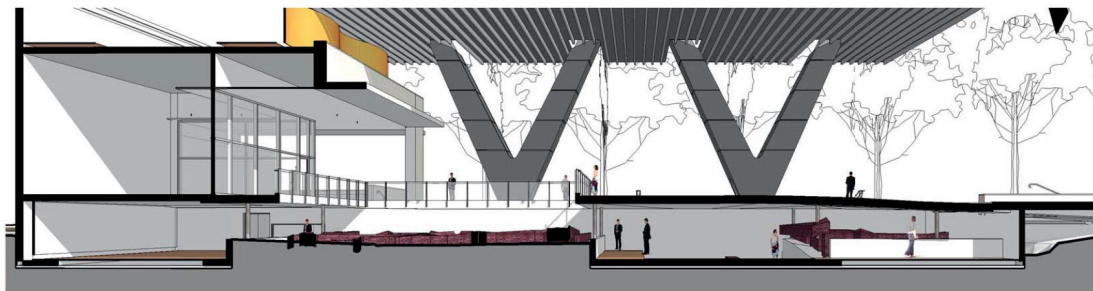
Graham Brooks and
Associates Pty Ltd
Incorporated in NSW
ACN 073 802 730
ABN 56 073 802 730
Nominated Architect Graham Leslie Brooks
NSW Architects Registration 3836

- Reconfiguration of Retail 4 to accommodate entry to new set of plaza level public toilets
- Reorganisation of Retail 5 to be centrally aligned, on an east-west axis, with the large display opening in the plaza
- Reallocation of Plaza Level seating area for Retail 5 to the northern edge of the Plaza

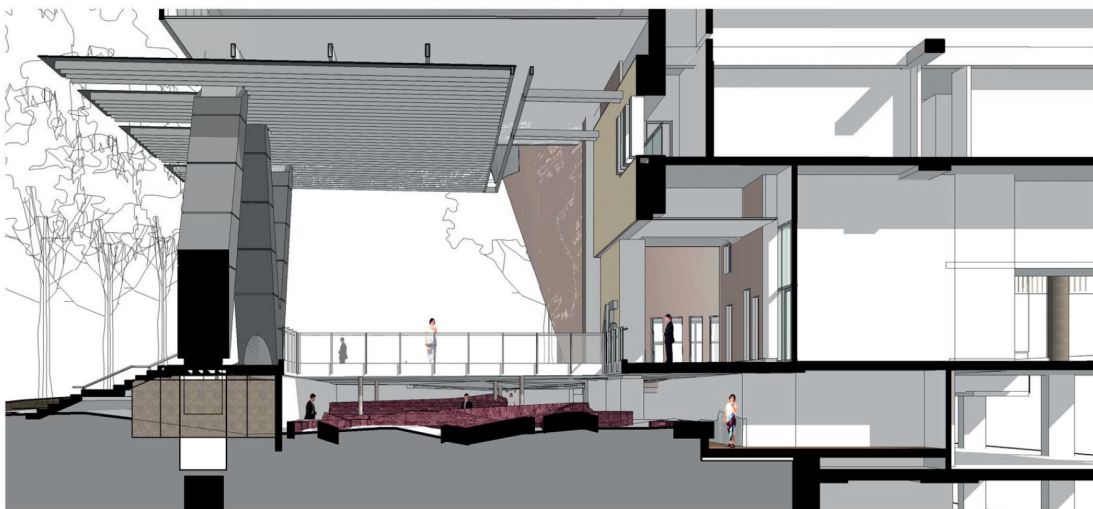
The proposed modifications at Basement Level that are assessed in this SHI report are:

Reorganisation of the layout of new building works including stair and lift

- Introduction of a Maintenance Store to support the maintenance and reactive monitoring of the in-situ archaeology.
- Introduction of a window from the Interpretation Space into the Archaeology Store.

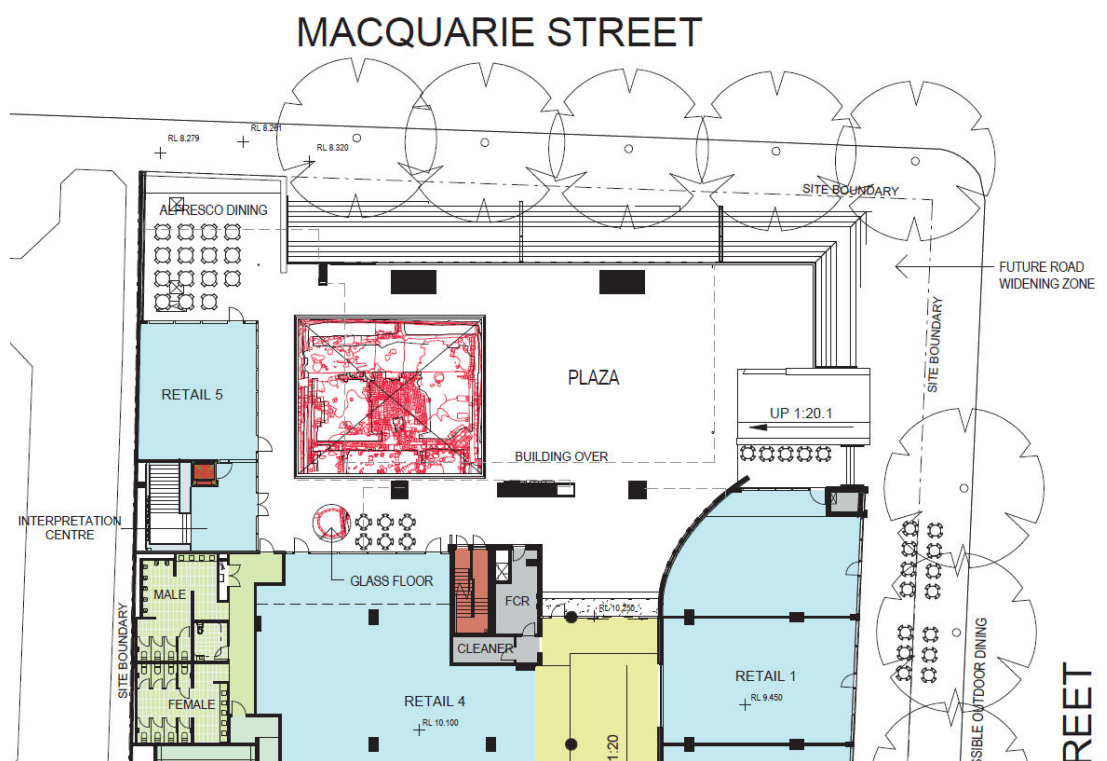


Section A



Section B

Sections illustrating how the new structure around In-site Archaeology will be arranged



Extract from the Plaza Level Plan illustrating the new location for the Entry to the Interpretation Centre and circular glass floor above the in-situ well below



Extract from Basement Level Archaeological Display, illustrating the new Maintenance Store, lift and stair entry

Assessment of Heritage Impact

The revised layout of the Plaza and Basement Level Archaeological Display and Interpretation Centre has achieved the following positive outcomes:

- The modified layout for the Plaza Level has achieved a suitable and equitable balance between the need for a highly visible Entry to the Archaeological Interpretation Centre with the need to create a lively retail environment and opportunities for the Plaza to be utilised for entertaining community events.
- Entry to the Archaeological Interpretation Centre is now clearly visible on the axial pedestrian approach beside the Plaza opening.
- Glazed circular window over well will continue to provide viewing opportunities and natural lighting to archaeology while improving the circulation around the main archaeology viewing opening in the Plaza.
- Access to the new Plaza Level toilets is separated from the Interpretation Centre Entry.
- Archaeological Display Consultants have advised that the revised layout, sizing and identity are suitable as a backdrop for the design and installation of a high quality Interpretive Display at both Plaza and Basement Levels.
- The addition of a Maintenance Store at Basement Level has been in response to a direct request from the Consultant Archaeologist.

Conclusions

- The resultant architectural and spatial backdrop is now available for the finalisation of a world class Archaeological Interpretation Display, commensurate with the importance of the in-situ archaeology and its historical links with the nearby World Heritage Listed Old Government House and Domain, in accordance with previous conditions of consent and the approval of the NSW Heritage Council.
- The resultant architectural and spatial backdrop is now available for the finalisation of the required archaeological conservation and monitoring programmes in accordance with previous conditions of consent and the approval of the NSW Heritage Council.
- There are no adverse heritage impacts arising from the proposed modifications of this component of the overall project.
- Limitations may need to be imposed on the area of Plaza Level seating to the immediate north of Retail 4 to avoid visual or physical interruption to the Interpretation Entry.

Recommendations

The Consent Authority should have no hesitation, on heritage grounds, in approving the proposed modification of the Plaza and Basement designs related to the provision of a future Archaeological Interpretation Centre

Yours faithfully
GRAHAM BROOKS AND ASSOCIATES

A handwritten signature in blue ink, appearing to read 'G. Brooks', with a large, stylized loop at the end.

Graham Brooks
Director
grahambrooks@gbaheritage.com