

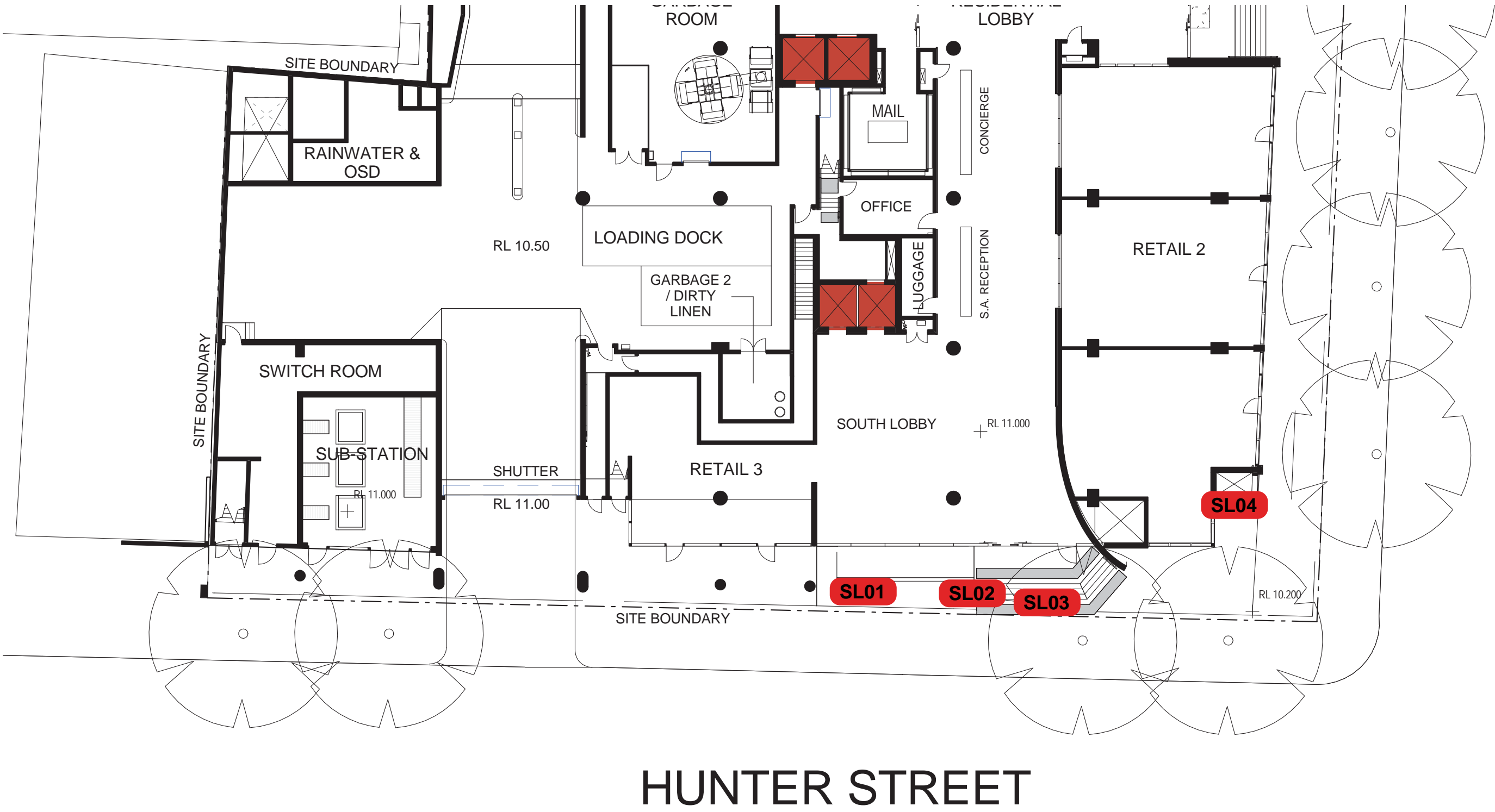
General Exterior Signage
for the
V by Crown Development



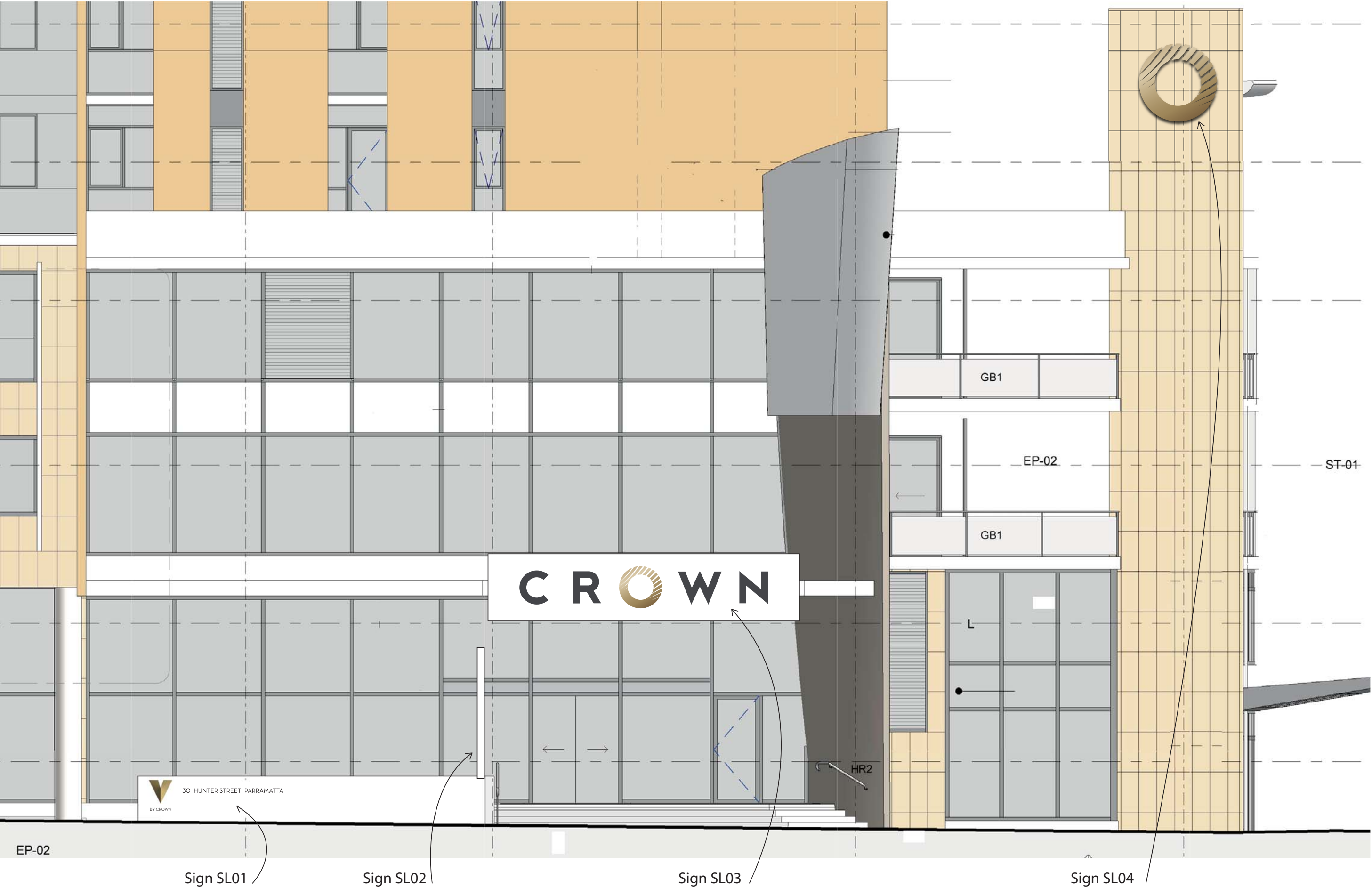
ISSUES Revisions to previous issue are either in underline (additional/amended) or ~~strikethrough~~ (deleted) text.

Issue	Date	Reason for Issue	Comment	Checked	Approved
A					

South Lobby



HUNTER STREET





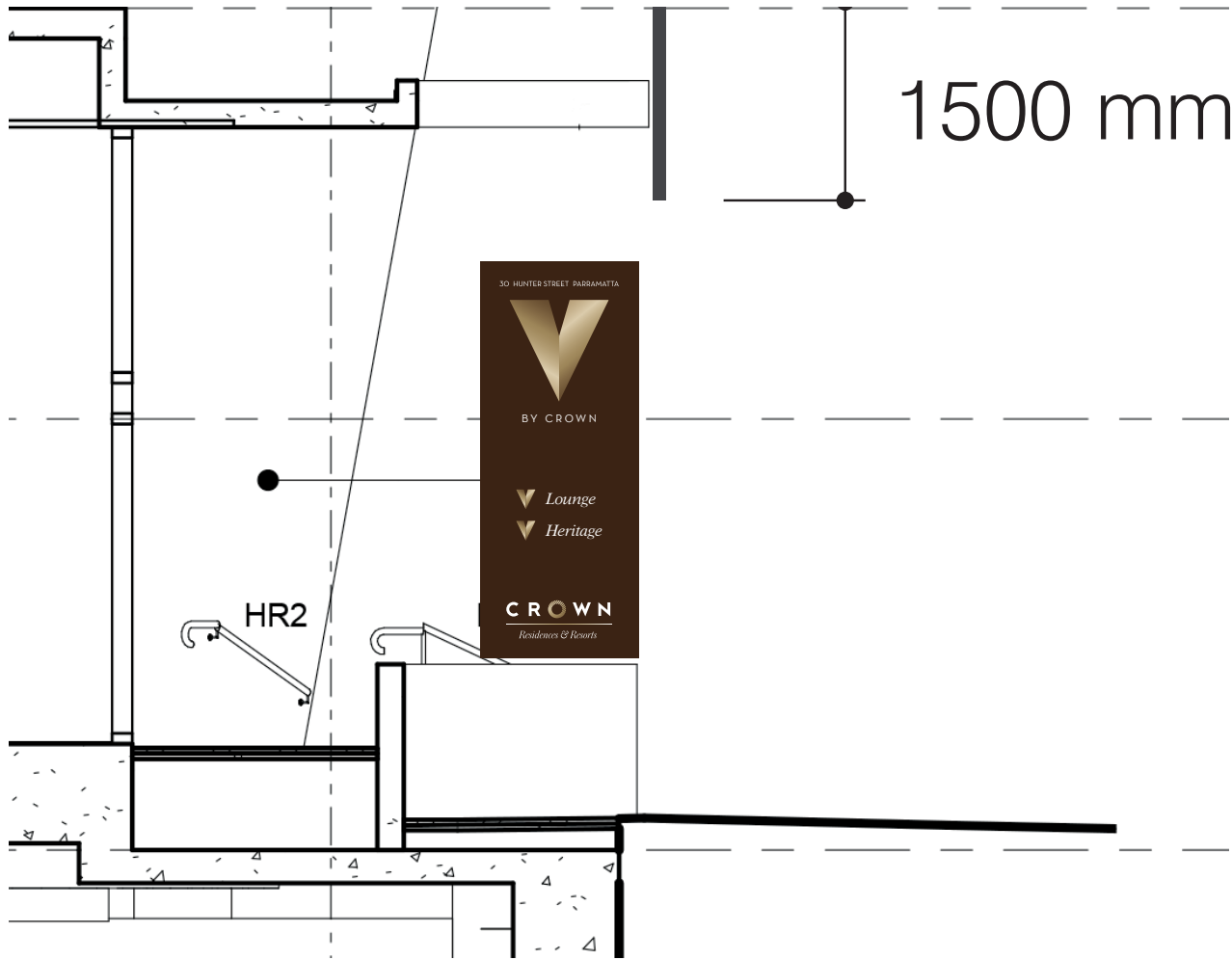
Sign	SL01
Message	Street address
Visibility	From Hunter Street travelling east/west, short range
Description	Laser cut metal letters, sculptured 'V'
Lighting	None
Colour	Letters - Dark bronze metal finish 'V' - Light bronze
Fixing	Pin fixed to wall
Font	Neutra Text Book
Location	
Size	3000 mm wide x 700 mm high
Notes	

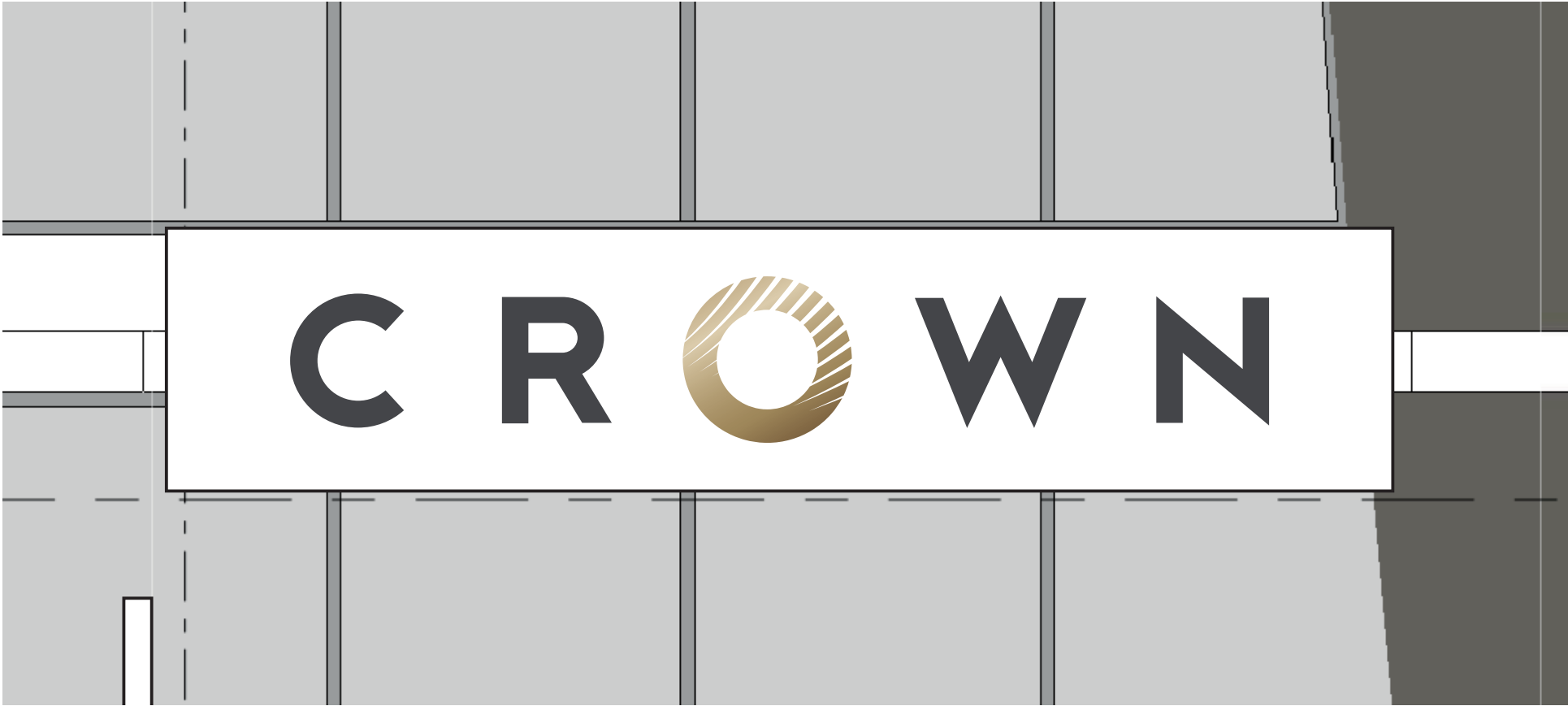
3000 mm



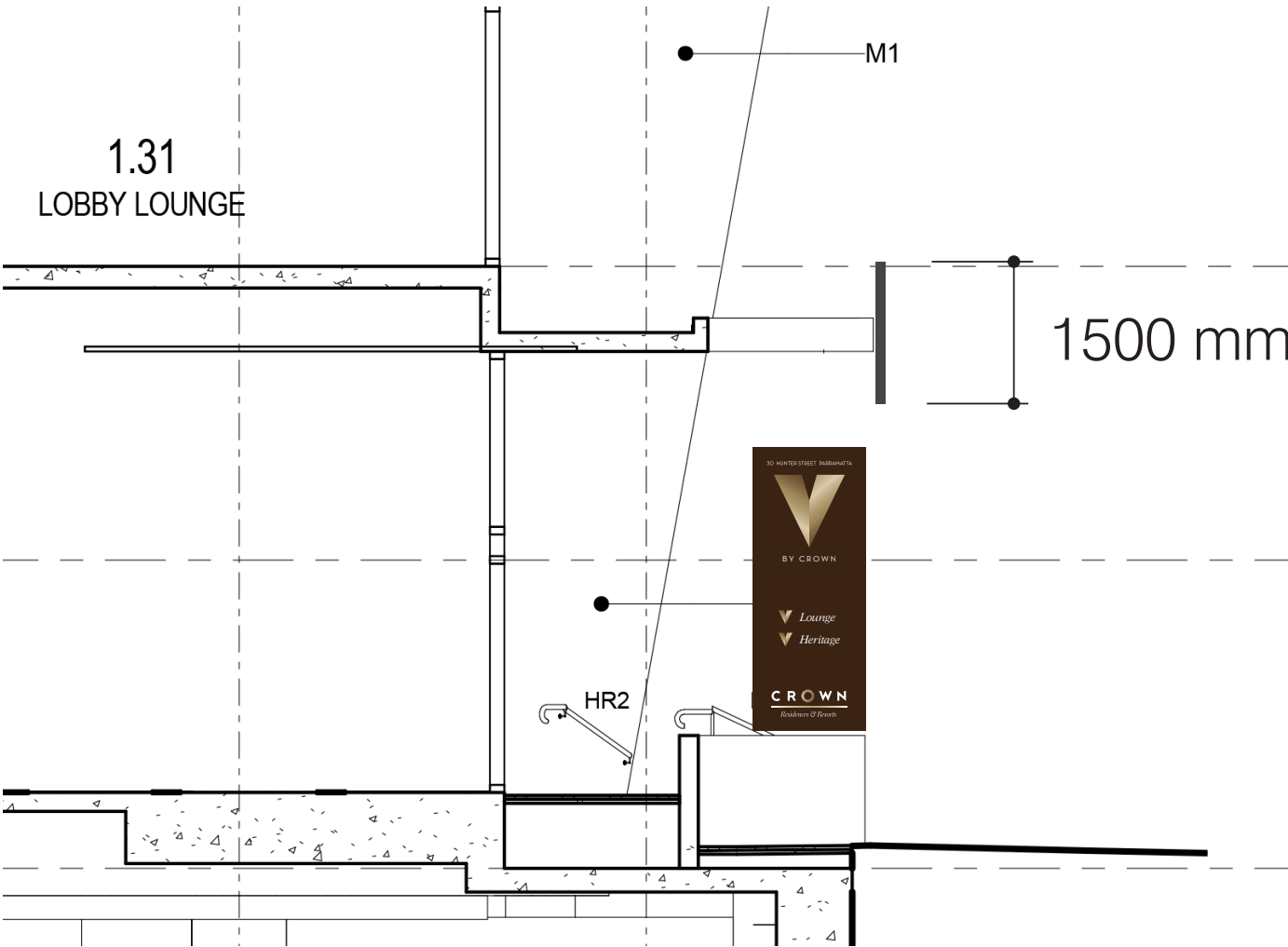


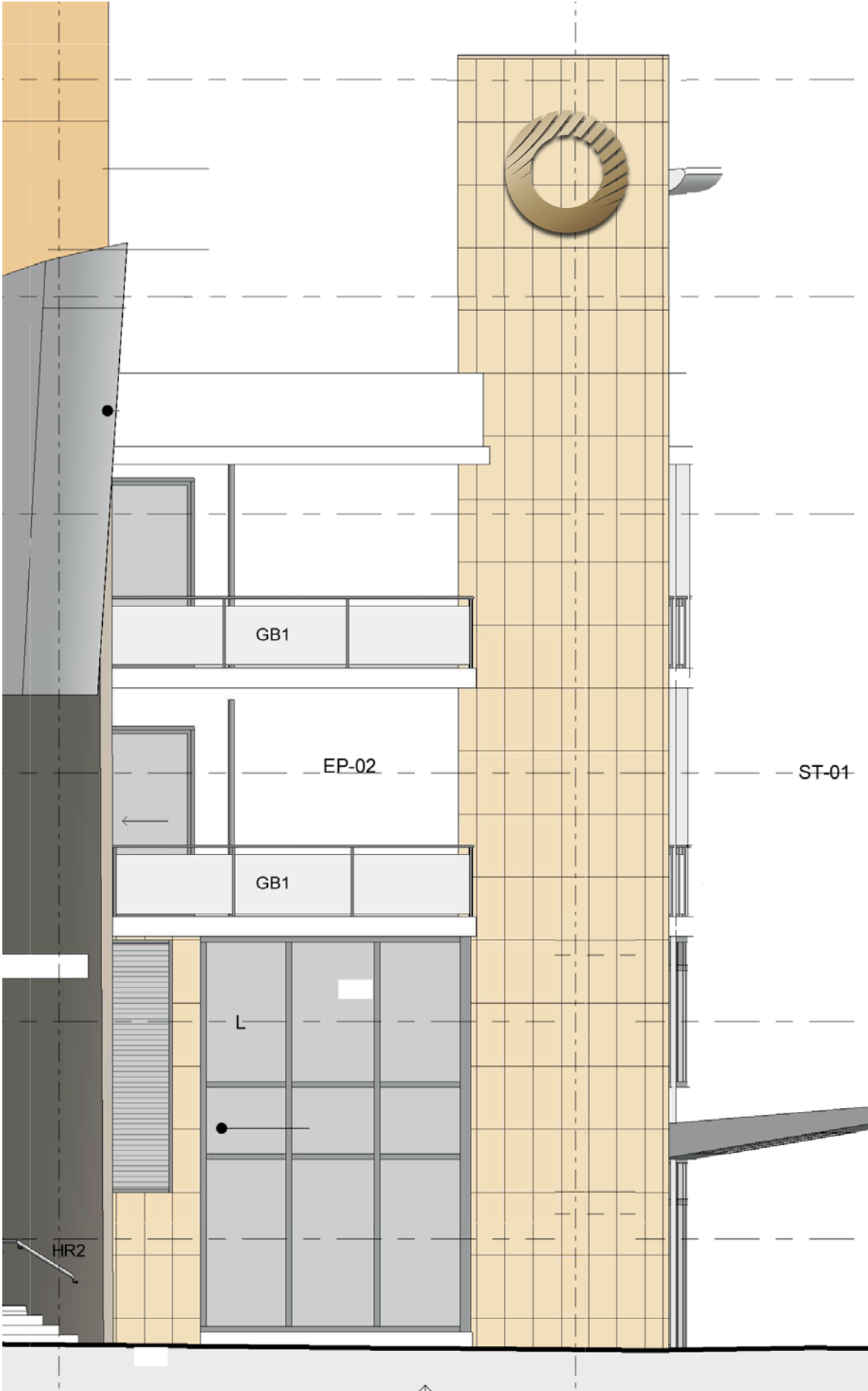
Sign	SL02
Message	Residential Name, Crown Residence & Resorts, V Heritage, V Lounge
Visibility	From Hunter Street looking west, medium range From Hunter Street looking east, medium range
Description	Double sided blade sign -
Lighting	Internally illuminated by neon
Colour	Dark bronze metal finish backing plate, light bronze/white coloured translucent lettering/symbols
Fixing	
Font	Neutra Text Book, Austin Italic
Location	
Description	1200 mm wide x 3200 mm high x 200 mm deep
Notes	240 v power supply required for 12 v transformer. Transformer to be concealed within 15 m of signage. Transformer to be accessible.





Sign	SL03
Message	Crown
Visibility	From Marsden Street travelling north, medium range From Hunter Street travelling east/west, short range
Description	Individual letters/symbol mounted on backboard
Lighting	Individual letters internally illuminated by neon
Colour	Individual letters - Pantone 426 Crown 'O' Symbol - Gold cmyk gradient - testing required Back board - White
Fixing	
Font	
Location	Centre sign on slab edge
Size	Individual letters approx 750 mm high by 100 mm deep. Crown symbol approx 950 mm x 950 mm by 100 mm deep. Overall sign approx 7000 mm x 1500 mm by 175 mm deep.
Notes	240 v power supply required for 12 v transformer. Transformer to be concealed within 15 m of signage. Transformer to be accessible.

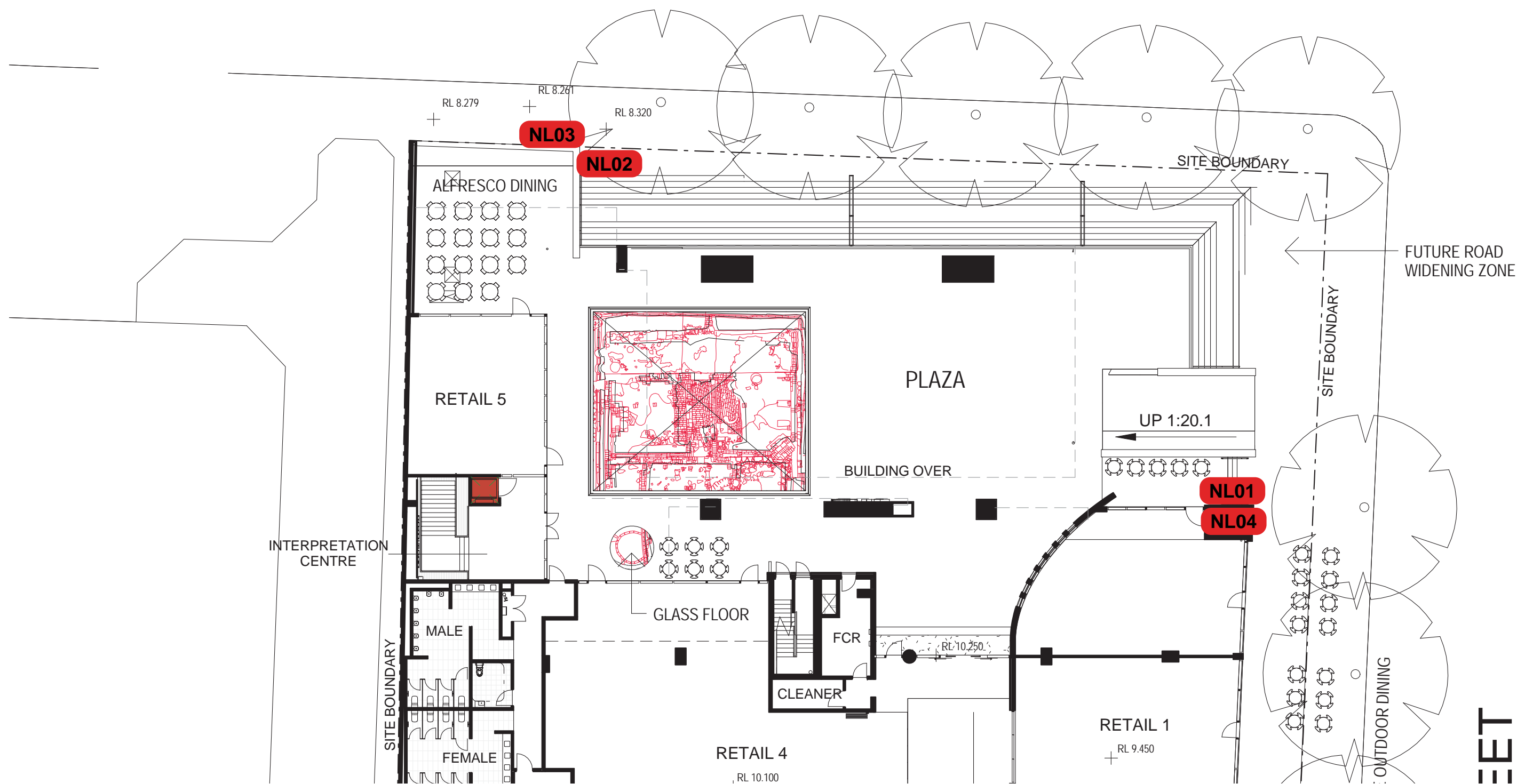




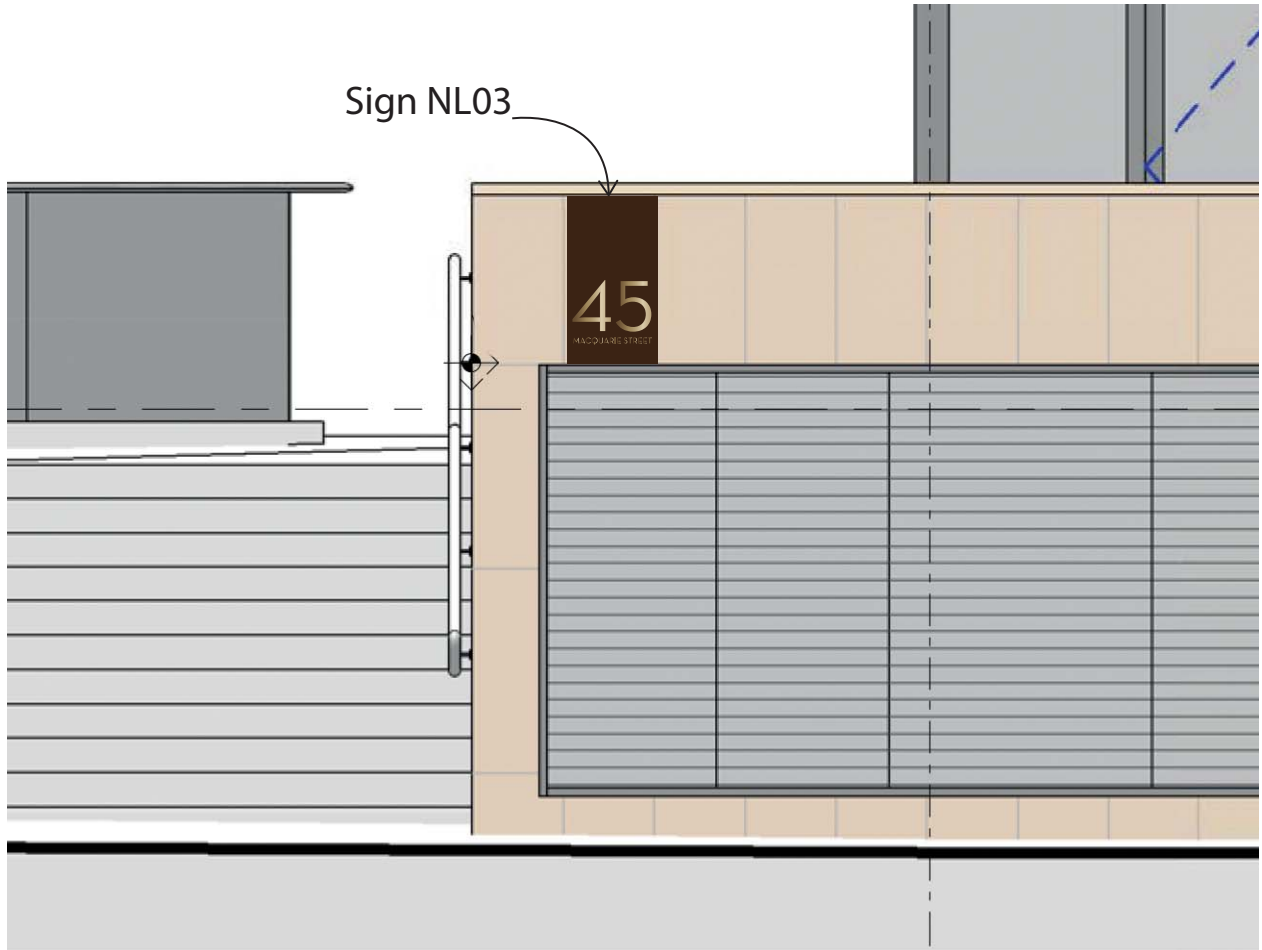
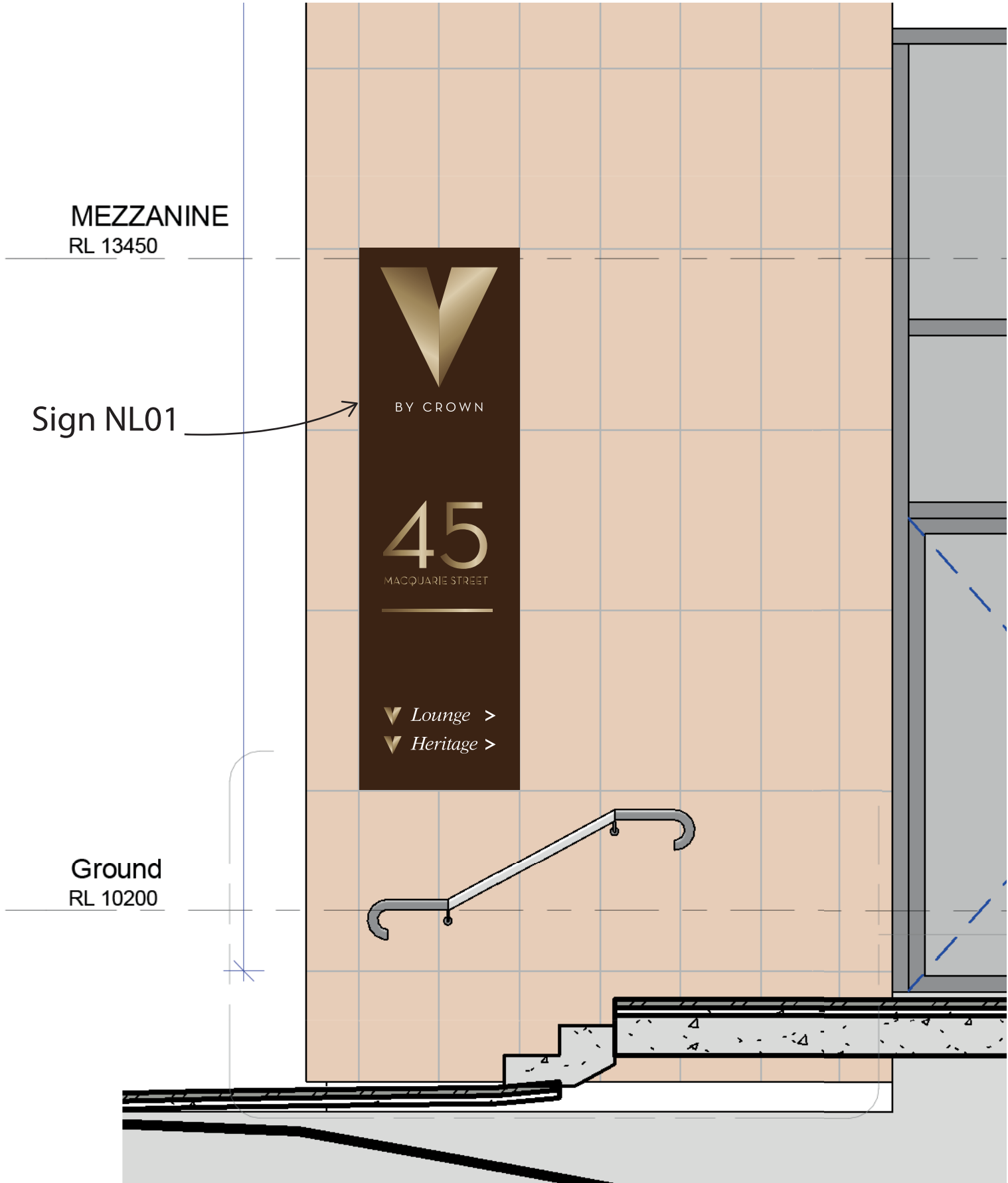
Sign	SL04
Message	Crown 'O'
Visibility	From Marsden Street travelling north, long range From Hunter Street travelling west, short range
Description	Three dimensional 'O'
Lighting	Neon internal + halo light
Colour	Crown 'O' Symbol - Gold cmyk gradient - testing required
Fixing	
Font	
Location	
Size	1750 mm wide x 1750 mm high x 120 mm deep
Notes	240 v power supply required for 12 v transformer. Transformer to be concealed within 15 m of signage. Transformer to be accessible.

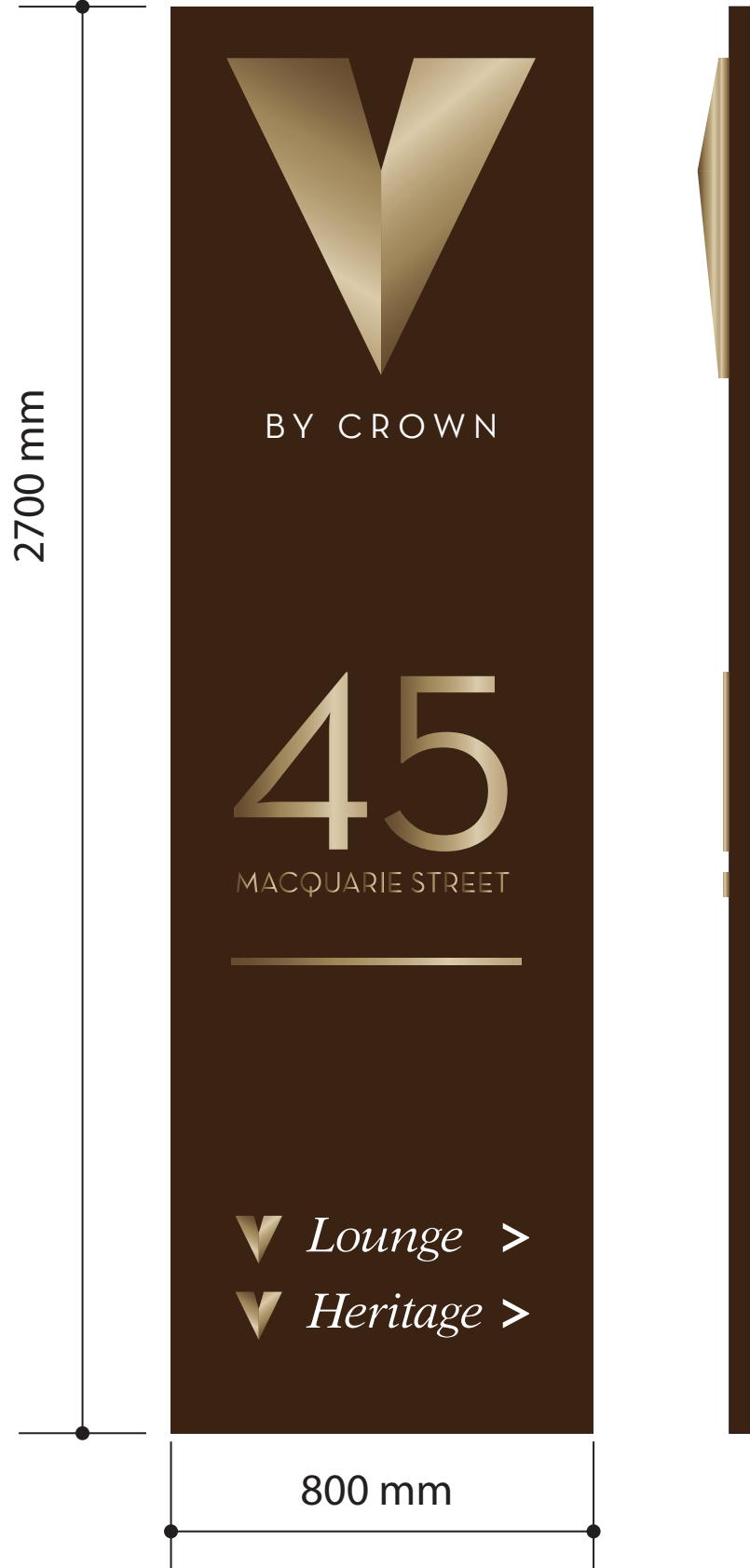
North Lobby

MACQUARIE STREET



ET





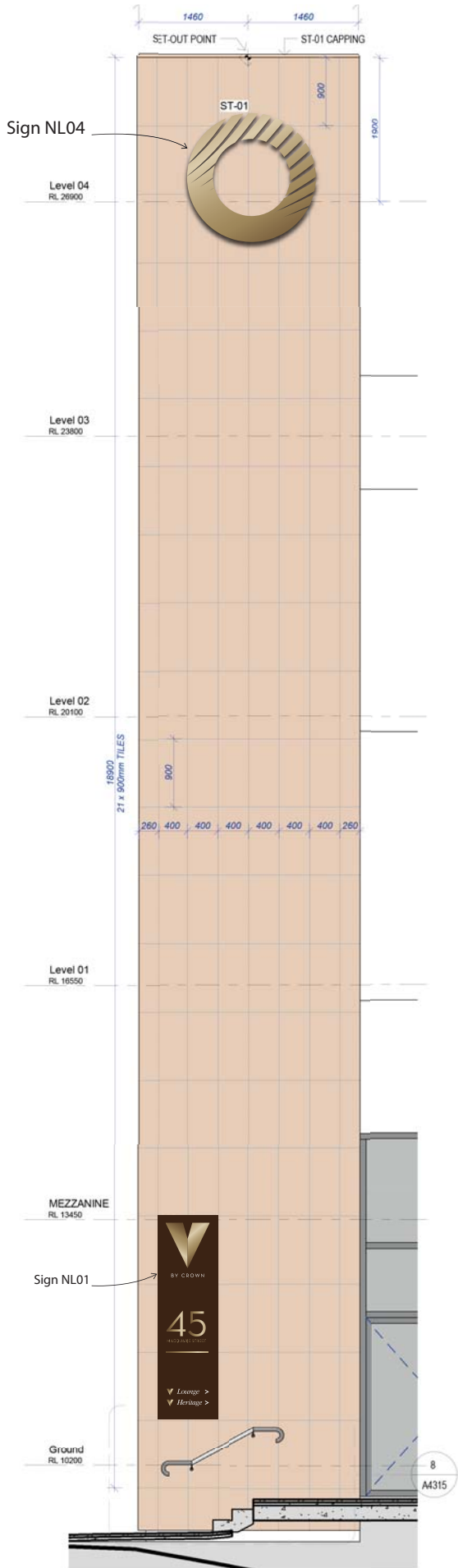
Sign	NL01
Message	Residential Name and Street Address Wayfinding for V Lounge and V Heritage
Visibility	From Macquarie Street as a pedestrian, short range From Marsden Street looking south, medium range
Description	Sculptured light bronze 'V', numbers and letters on dark bronze plate
Lighting	none
Colour	
Fixing	
Font	Neutra Text Book, Austin Italic
Location	
Size	Plate 800 mm wide x 2700 mm high (to replace 6 limestone panels)
Notes	Sign dimensions to suite ST1 limestone panelling Sign back plate set flush with limestone panelling Material options to be investigated



Sign	NL02
Message	Residential Name and Street Address Wayfinding for V Lounge and V Heritage
Visibility	From Macquarie Street as a pedestrian, short range
Description	Light bronze numbers and letters on dark bronze plate
Lighting	none
Colour	
Fixing	
Font	Neutra Text Book, Austin Italic
Location	
Size	Plate 400 mm wide x 1350 mm high (to replace 1.5 limestone panels)
Notes	Sign dimensions to suite ST1 limestone panelling Sign back plate set flush with limestone panelling Material options to be investigated

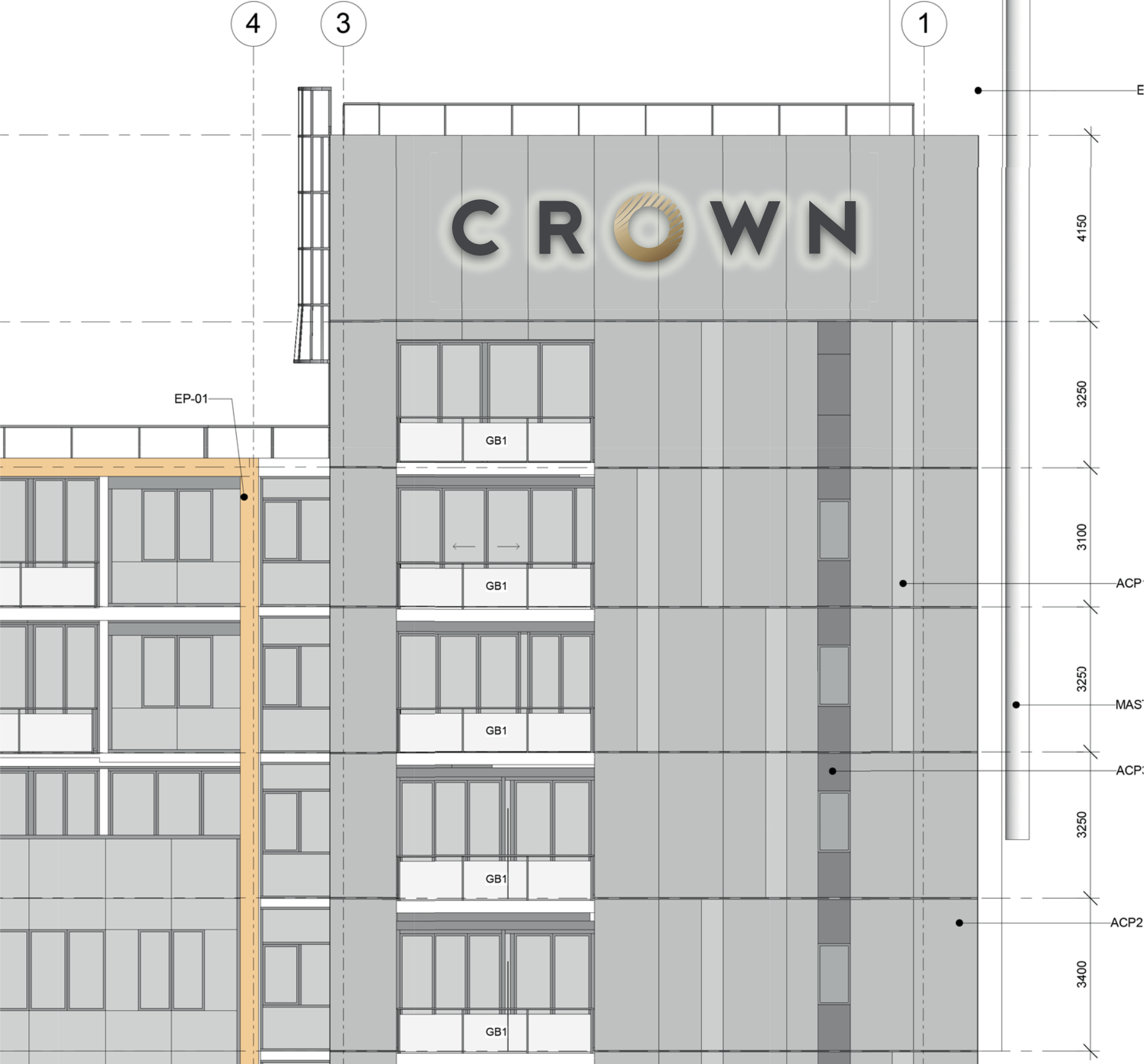


Sign	NL03
Message	Street Address
Visibility	From Macquarie Street as a pedestrian, short range
Description	Light bronze numbers and letters on dark bronze plate
Lighting	none
Colour	
Fixing	
Font	Neutra Text Book
Location	
Size	Plate 400 mm wide x 750 mm high (to replace 1 limestone panels)
Notes	Sign dimensions to suite ST1 limestone panelling Sign back plate set flush with limestone panelling Material options to be investigated



Sign	NL04
Message	Crown 'O'
Visibility	From Marsden Street travelling south, long range From Macquarie Street travelling west, short range
Description	Three dimensional 'O'
Lighting	Neon internal + halo light
Colour	Crown 'O' Symbol - Gold cmyk gradient - testing required
Fixing	
Font	
Location	
Size	1750 mm wide x 1750 mm high x 120 mm deep
Notes	240 v power supply required for 12 v transformer. Transformer to be concealed within 15 m of signage. Transformer to be accessible.

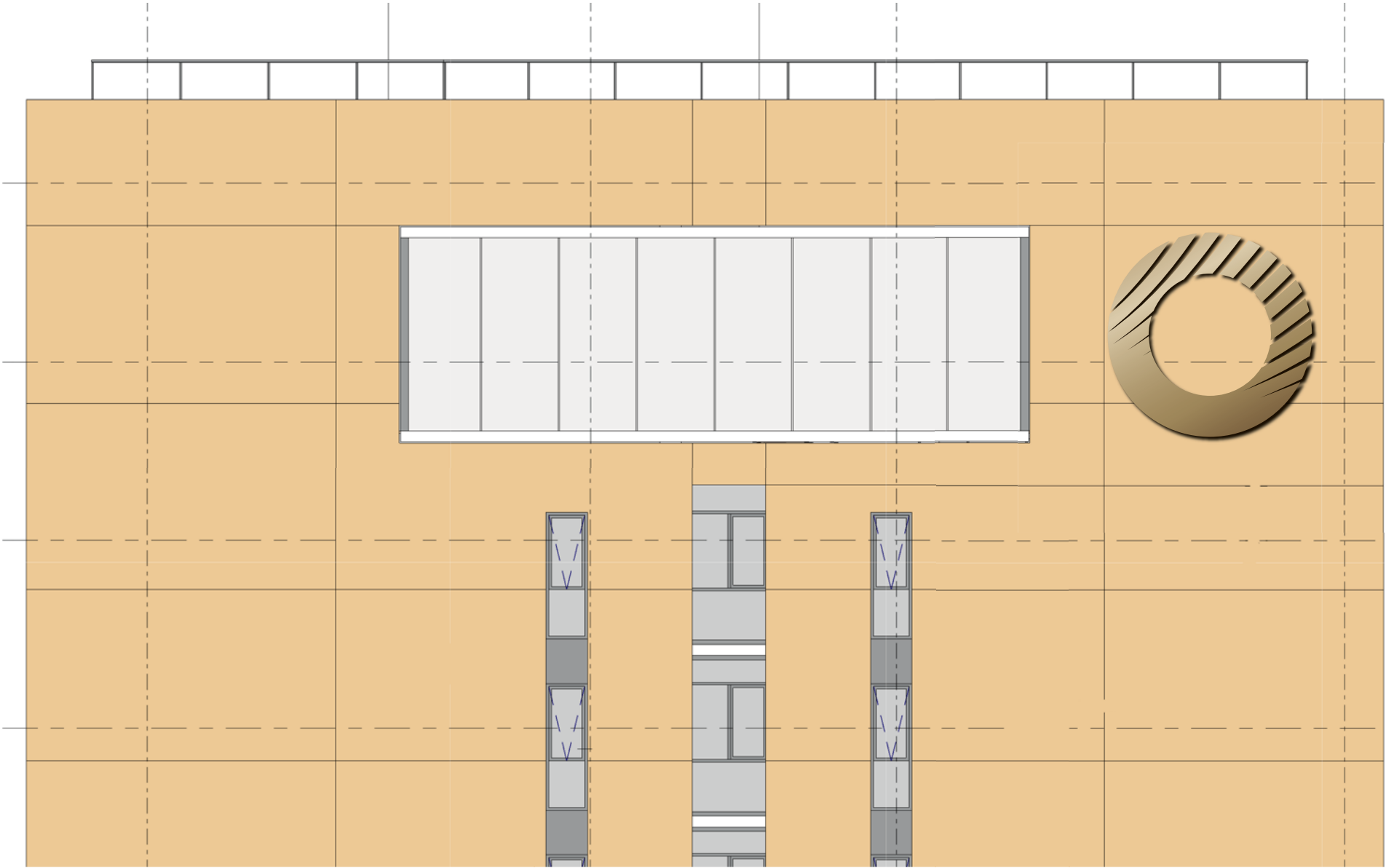
Sky Signs



Sign	SK01
Message	Crown
Visibility	Sky sign - visible from east of Marsden Street - long range
Description	Individual letters/elements
Lighting	Internal + halo lighting
Colour	Possibly black letters by day, white letters at night. Crown 'O' gold
Fixing	
Font	
Location	
Size	Overall - 9000 mm wide x 1550 mm high (Crown 'O' symbol approx 1550 mm x 1550 mm)
Notes	240 v power supply required for 12 v transformer. Transformer to be concealed within 15 m of signage. Transformer to be accessible.

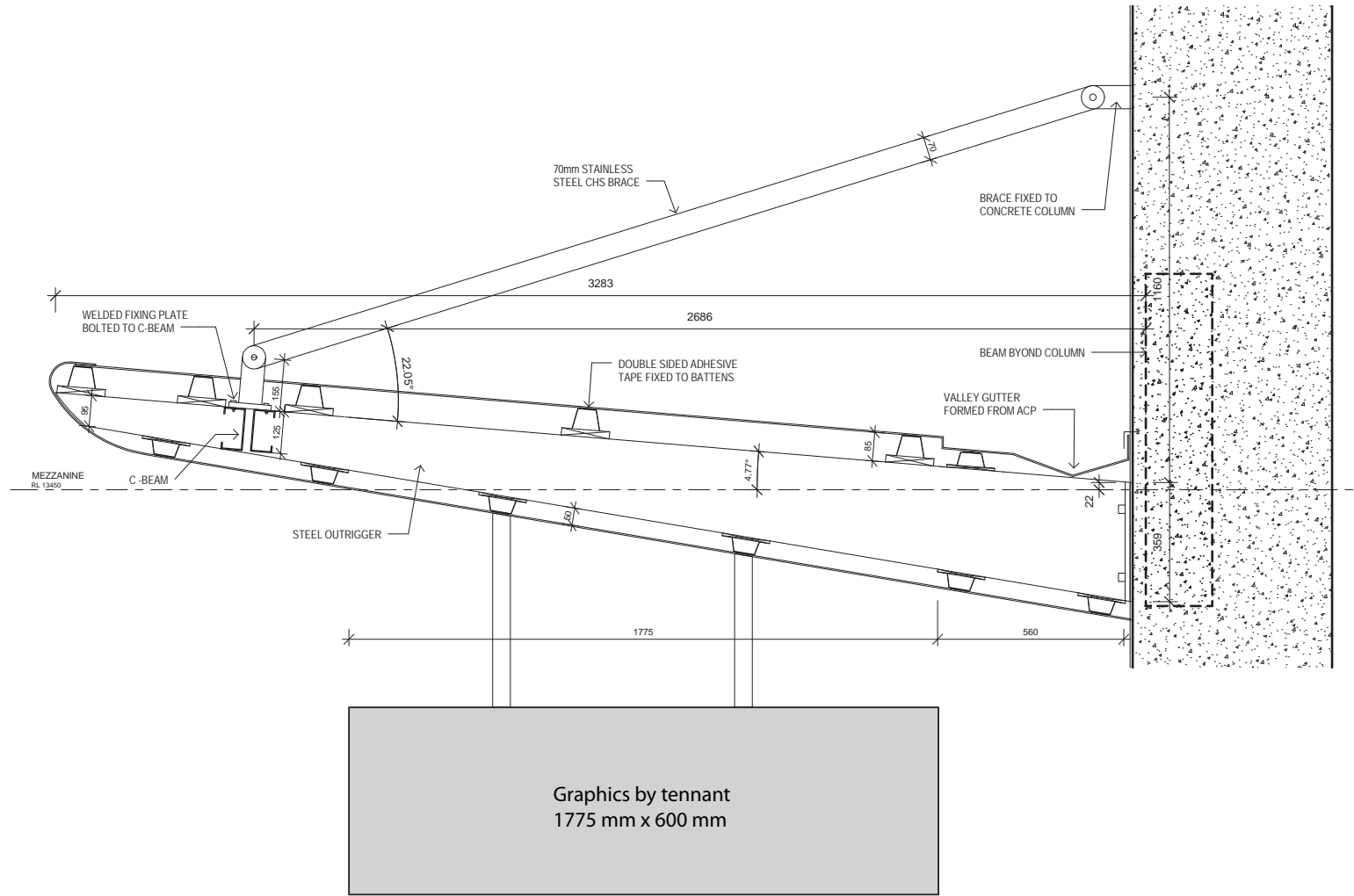


Sign	SK02
Message	Crown
Visibility	Sky sign - visible from east of Marsden Street - long range
Description	Individual letters/elements
Lighting	Internal + halo lighting
Colour	Possibly black letters by day, white letters at night. Crown 'O' symbol gold
Fixing	
Font	
Location	
Size	Overall - 9000 mm wide x 1550 mm high (Crown 'O' symbol approx 1550 mm x 1550 mm)
Notes	240 v power supply required for 12 v transformer. Transformer to be concealed within 15 m of signage. Transformer to be accessible.



Sign	SK03
Message	Crown 'O' symbol
Visibility	Sky sign - visible from south of Hunter Street - long range
Description	Three dimensional 'O'
Lighting	Internal + halo lighting
Colour	
Fixing	
Font	
Location	
Size	3900 mm wide x 3900 mm high
Notes	240 v power supply required for 12 v transformer. Transformer to be concealed within 15 m of signage. Transformer to be accessible.

Retail Awning Signage



Sign	Retail Awning
Message	By Tennant
Visibility	From Marsden Street looking north and south, medium range.
Description	Double sided slimline lightbox suspended from awning above. Width of lightbox to match glazed section of awning above. One lightbox centred on each retail entry - total six lightboxes.
Lighting	Internally illuminated
Colour	Metal frame to match awning
Fixing	
Font	
Location	Lightbox centred on solid panel in awning above door. Bottom of lightbox to align with top of door.
Size	1775 mm wide x 600 mm high
Notes	

