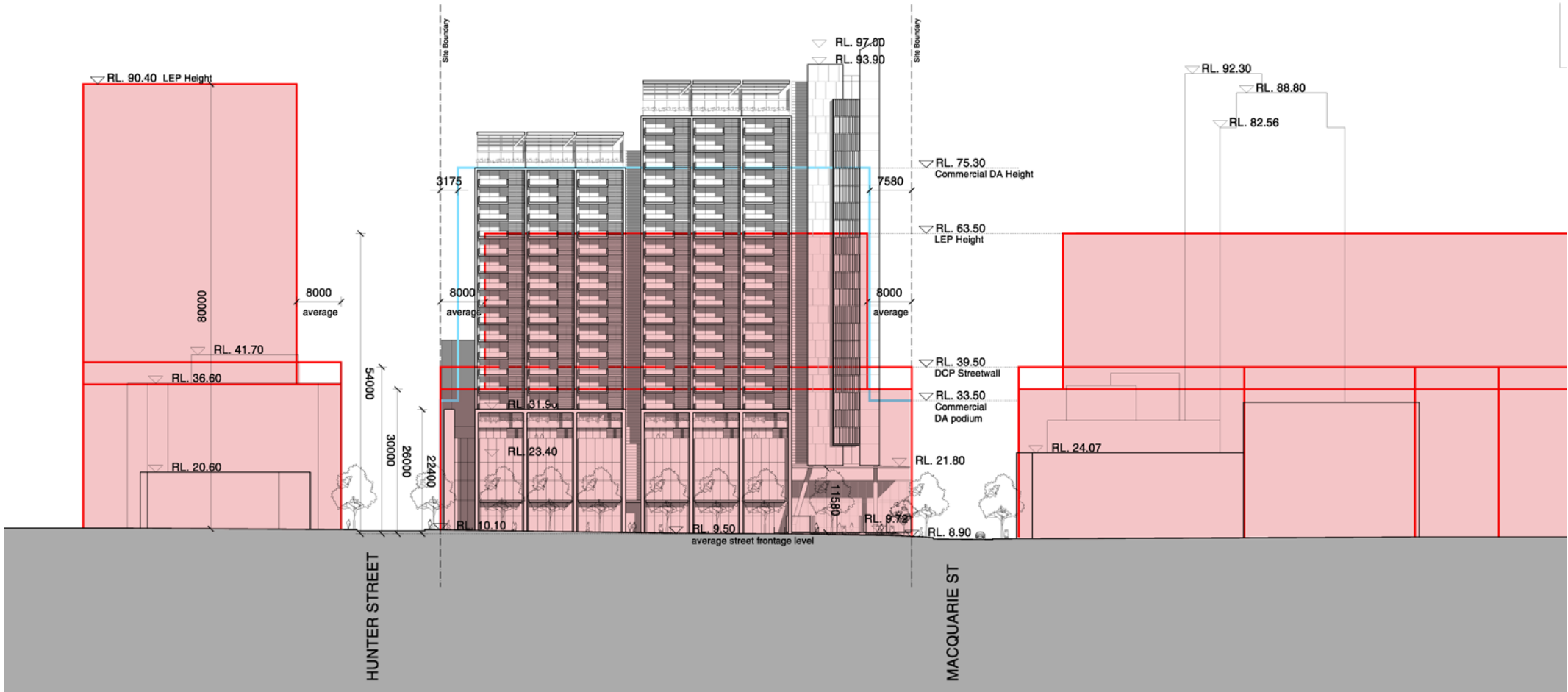
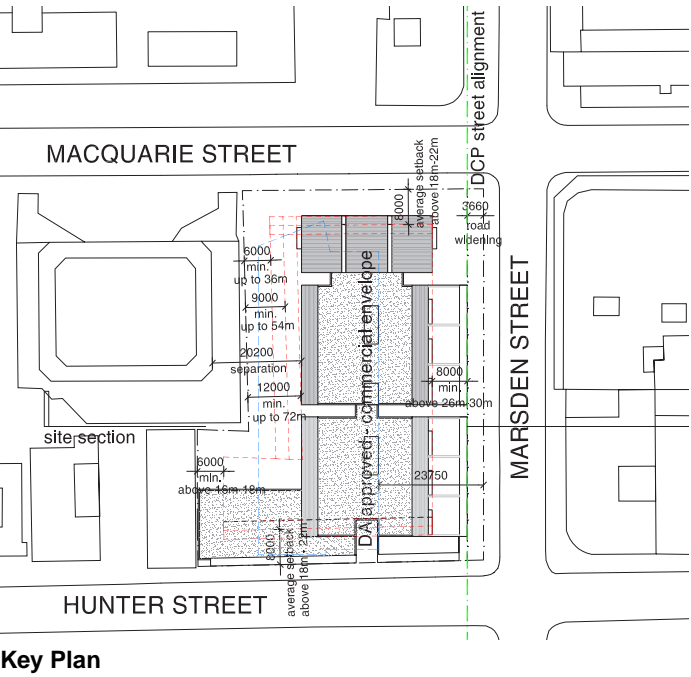


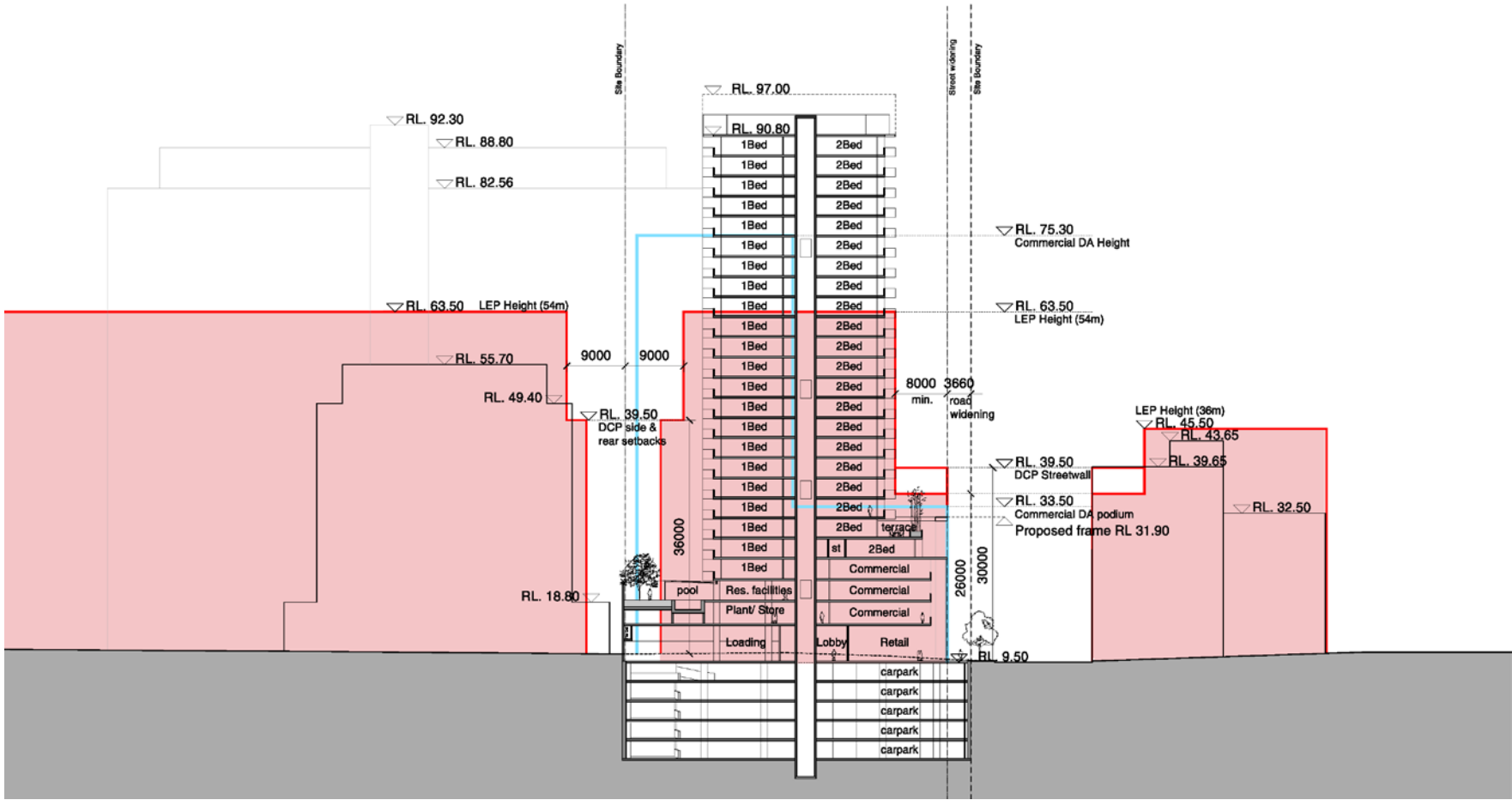
7. Architectural Drawings

i. Street Context Elevations

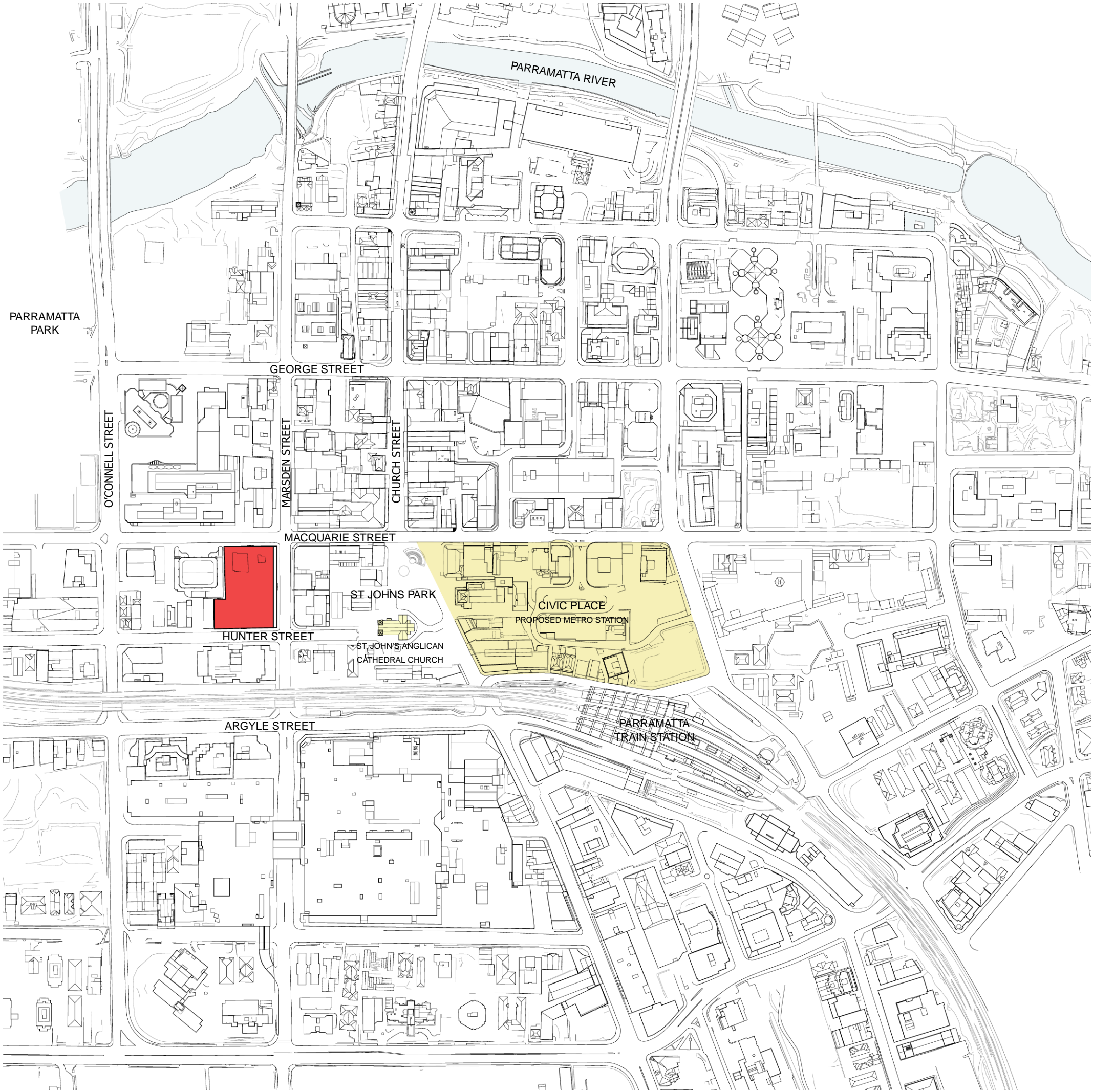
NTS

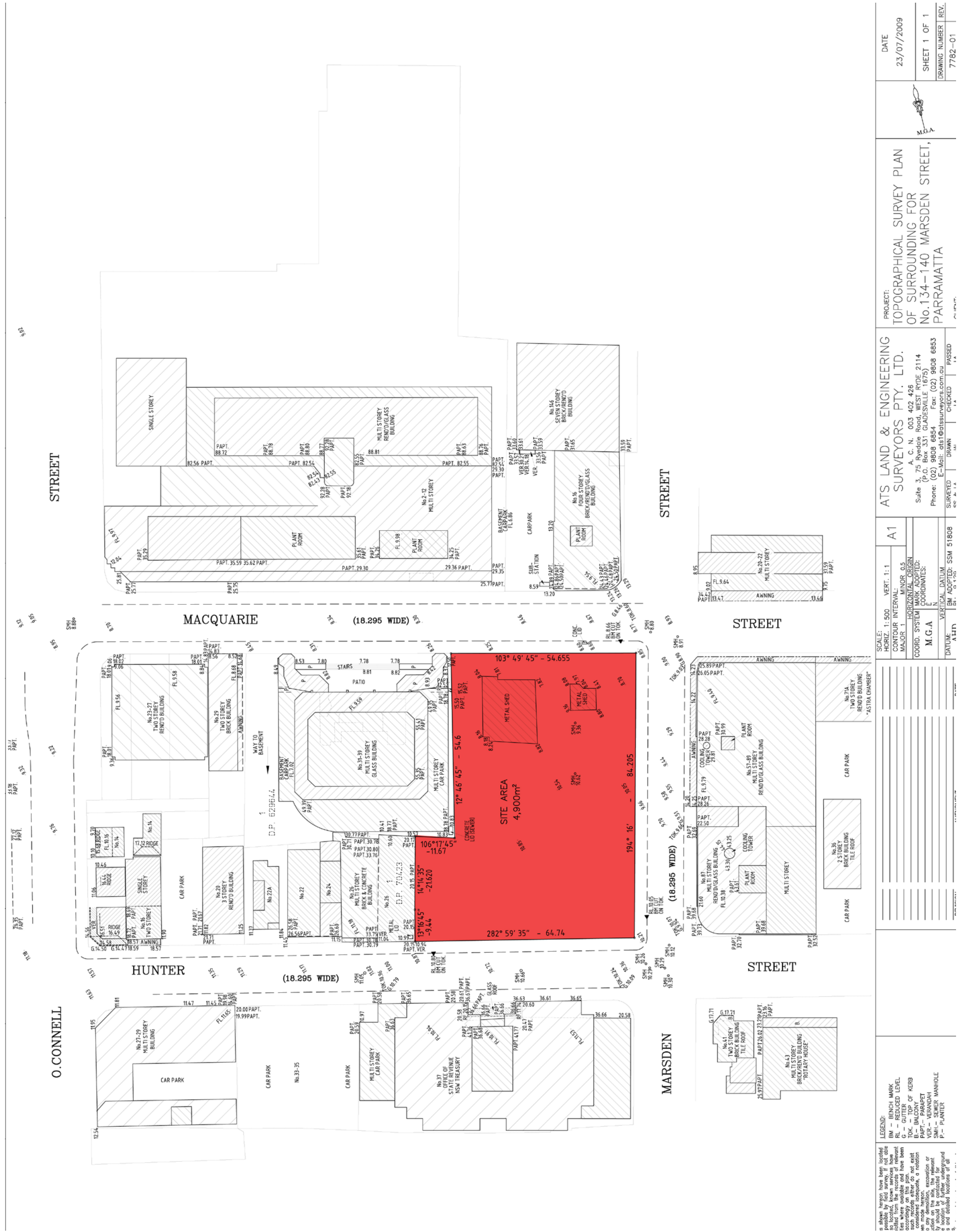


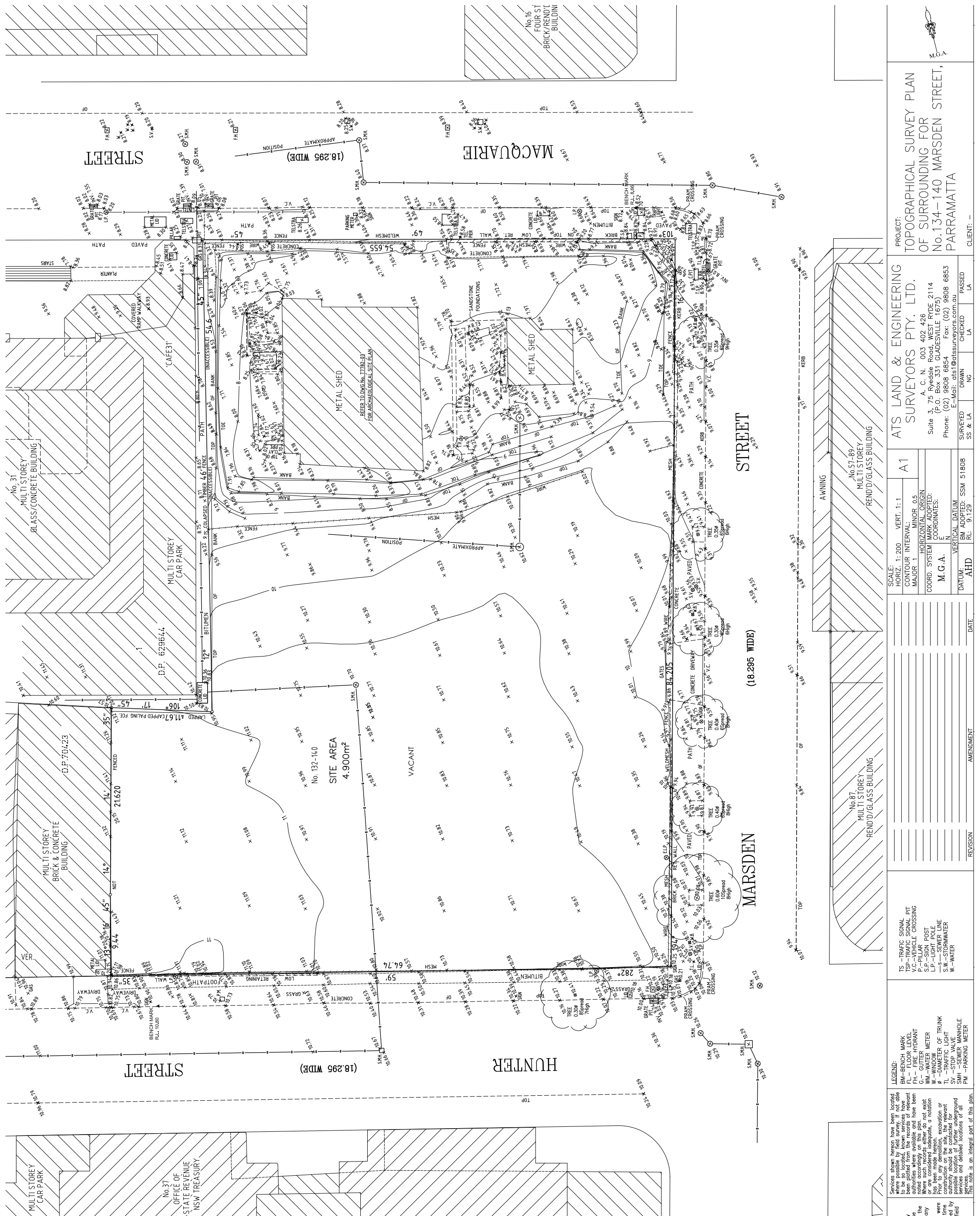
Marsden Street



Site Section looking North



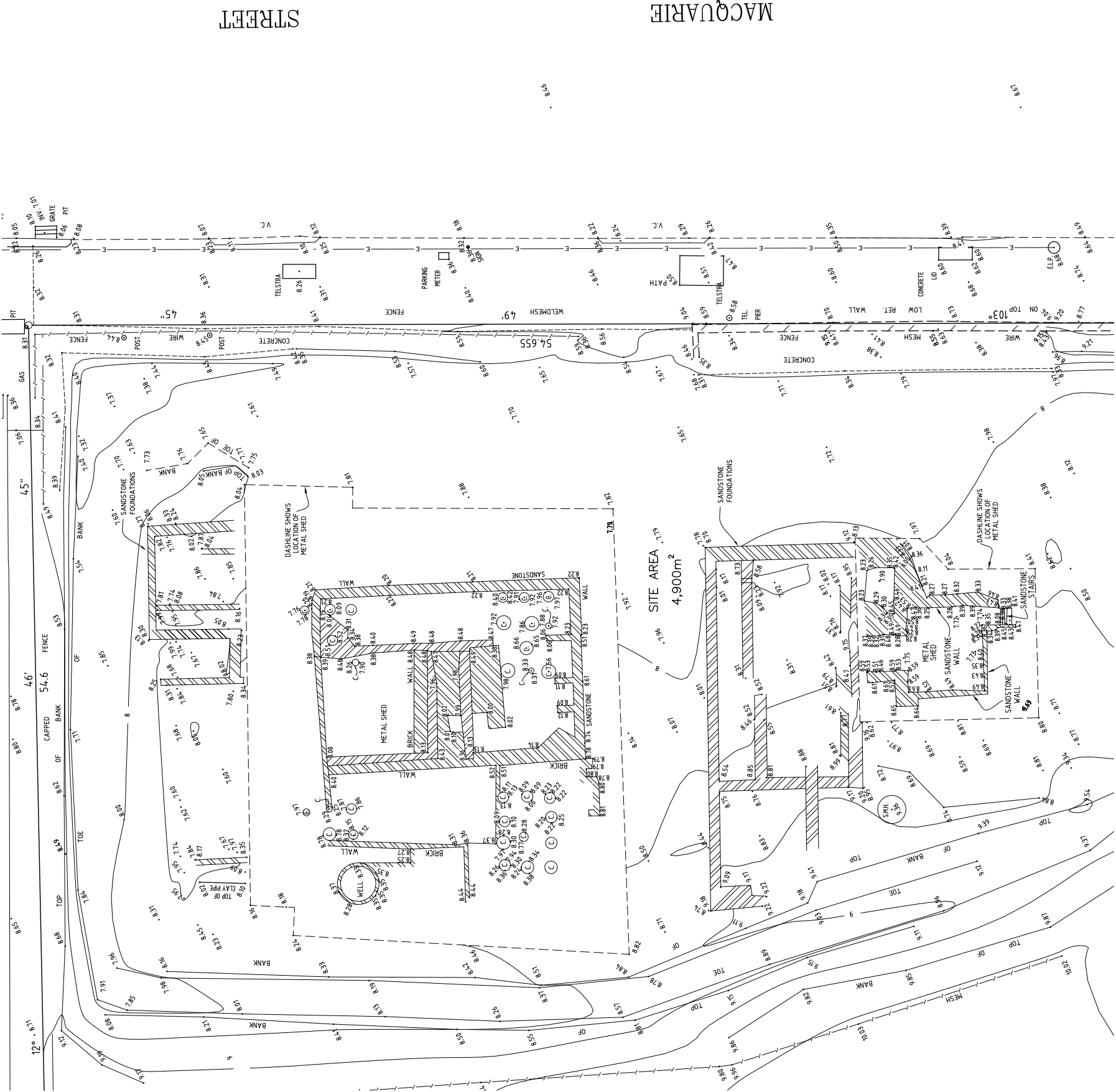




7. Architectural Drawings

v. Detailed Site Survey Plan - Archaeological Remains

Scale 1:200



REFER TO DRAWING No.7782-02

<p>LEGEND:</p> <p>BM—BENCH MARK ELP—ELECTRICITY & LIGHT POLE E—E—ELECTRICITY LINE C— COLUMN</p> <p>Services shown hereon have been located where possible by field survey, if not able to be so located, known services have been plotted from the records of relevant authorities. If any services have been noted accordingly on this plan, not exist or are considered inadequate, a notation has been made hereon, excavation or construction on the site, the relevant authority should be contacted for services and detailed locations of all services.</p> <p>This note is an integral part of this plan.</p>	<p>REVISION</p>	<p>AMENDMENT</p>	<p>DATE</p>	SCALE:		<p>A1</p>	<p>PROJECT: ARCHAEOLOGICAL SITE PLAN FOR No.134—140 MARSDEN STREET, PARRAMATTA</p>	<p>M.G.A.</p>
				HORIZ. 1: 100 VERT. 1: 1				
				CONTOUR INTERVAL: MAJOR 1 MINOR 0.5				
				COORD. SYSTEM MARK ADOPTED: M.G.A. E				
				COORDINATES:				
				VERTICAL DATUM				
				BM ADOPTED: SSM 51808				
				RL: 9.129				
				DRAWN				
				CHECKED				
PASSED								
CLIENT:								