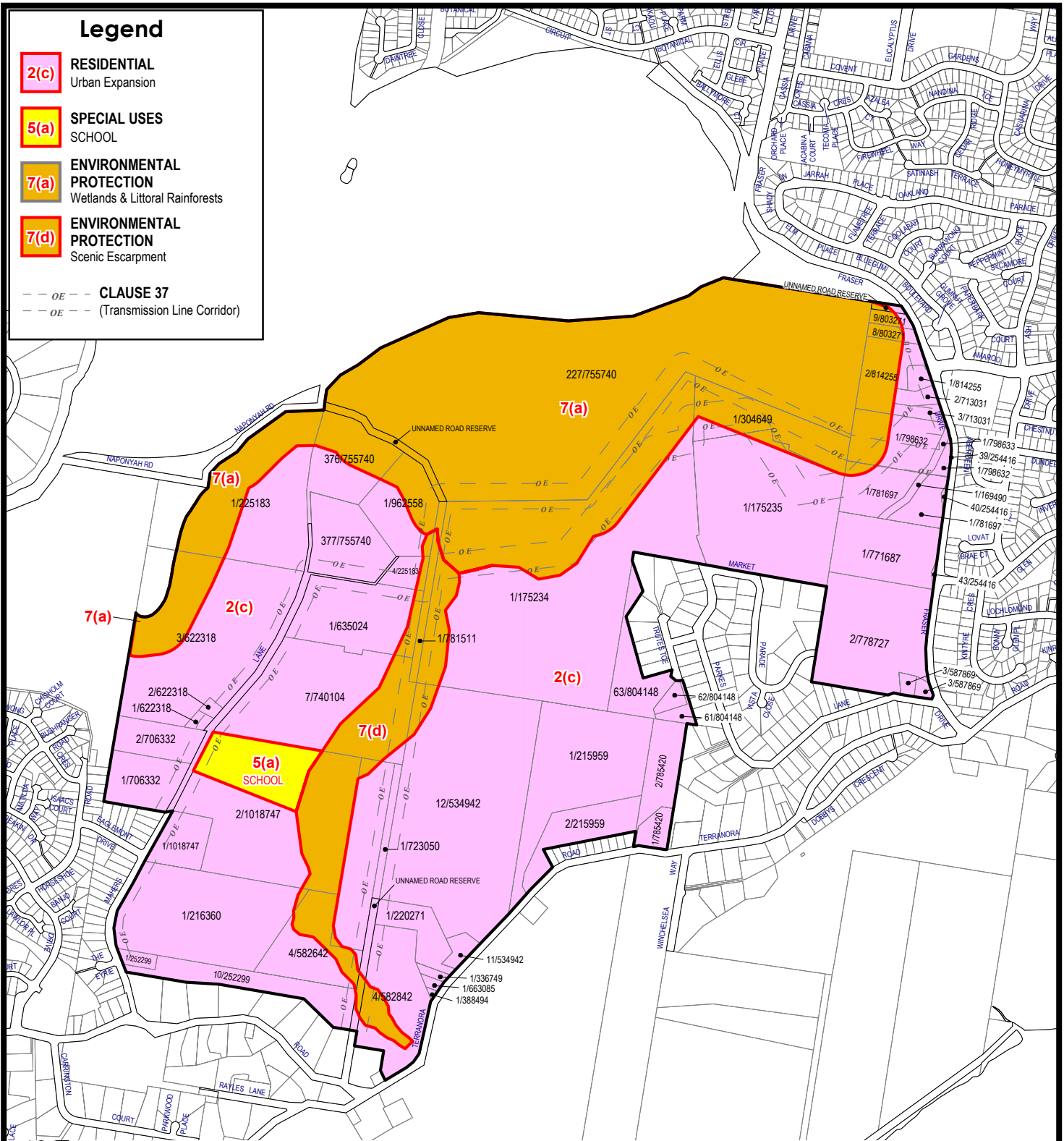


Legend

- 2(c)** RESIDENTIAL
Urban Expansion
- 5(a)** SPECIAL USES
SCHOOL
- 7(a)** ENVIRONMENTAL
PROTECTION
Wetlands & Littoral Rainforests
- 7(d)** ENVIRONMENTAL
PROTECTION
Scenic Escarpment
- OE --- **CLAUSE 37**
--- OE --- (Transmission Line Corridor)



SCALE: 1:15,000

LOCALITY: TERRANORA

PARISH: TERRANORA

COUNTY: ROUS

SHEET: 1 of 1

ENVIRONMENTAL PLANNING & ASSESSMENT ACT, 1979

TWEED

DRAFT LOCAL ENVIRONMENTAL PLAN 2000 AMENDMENT No. 10

DRAWN BY: J. Batchelor DATE: 07/10/2004

SUPERVISING DRAFTER:

PLANNING OFFICER: Eber Butron

COUNCIL FILE No. GTI/LEP/2000/10

DEPT. FILE No.: G94/00396

GOVT. GAZETTE OF:

STATEMENT OF RELATIONSHIP WITH OTHER PLANS

AMENDS: TWEED LOCAL ENVIRONMENTAL PLAN 2000

CERTIFIED IN ACCORDANCE WITH
THE ENVIRONMENTAL PLANNING &
ASSESSMENT ACT 1979, AND REGULATIONS

13/03/2006

GENERAL MANAGER

DATE