

EROSION AND SEDIMENT CONTROL NOTES

GENERAL INSTRUCTIONS

1. All references of details, testing and procedures are to be followed as specified in the department of housing "managing urban stormwater soils and construction" manual (March 04)
2. This plan is to be read in conjunction with the engineering plans, and any other plans or written instructions that may be issued and relating to development at the subject site.
3. The contractor will ensure that all soil and water management works are located as shown in this specification.
4. All contractors shall be aware of their responsibilities in minimising the potential for soil erosion and pollution to downslope lands and waterways.
5. These plans present concepts only, the contractor shall be responsible for the establishment & management of a detailed scheme meeting council's approval.

CONSTRUCTION SEQUENCE

6. The soil erosion potential on this site shall be minimised, hence initial works shall be undertaken in the following sequence prior to commencing construction :-
  - (a) Install all temporary sediment fences and barrier fences where fences are adjacent to each other the sediment fence can be incorporated into the barrier fence.
  - (b) Construct temporary stabilised site access.
  - (c) Install sediment traps.
7. Undertake site development works so that land disturbance is confined to areas of minimum workable size.

EROSION CONTROL

8. At all times and in particular during windy and dry weather, large, unprotected areas will be kept moist (not wet) by sprinkling with water to keep dust under control.

SEDIMENT CONTROL

9. Any sand used in the concrete curing process (spread over the surface) will be removed as soon as possible and within 10 working days from placement.
10. Water will be prevented from entering the permanent drainage system unless it is relatively sediment free, i.e. the catchment area has been permanently landscaped/stabilised and/or any likely sediment has been filtered through an approved structure.
11. Temporary soil and water management structures will be removed only after the lands they are protecting are stabilised/rehabilitated.

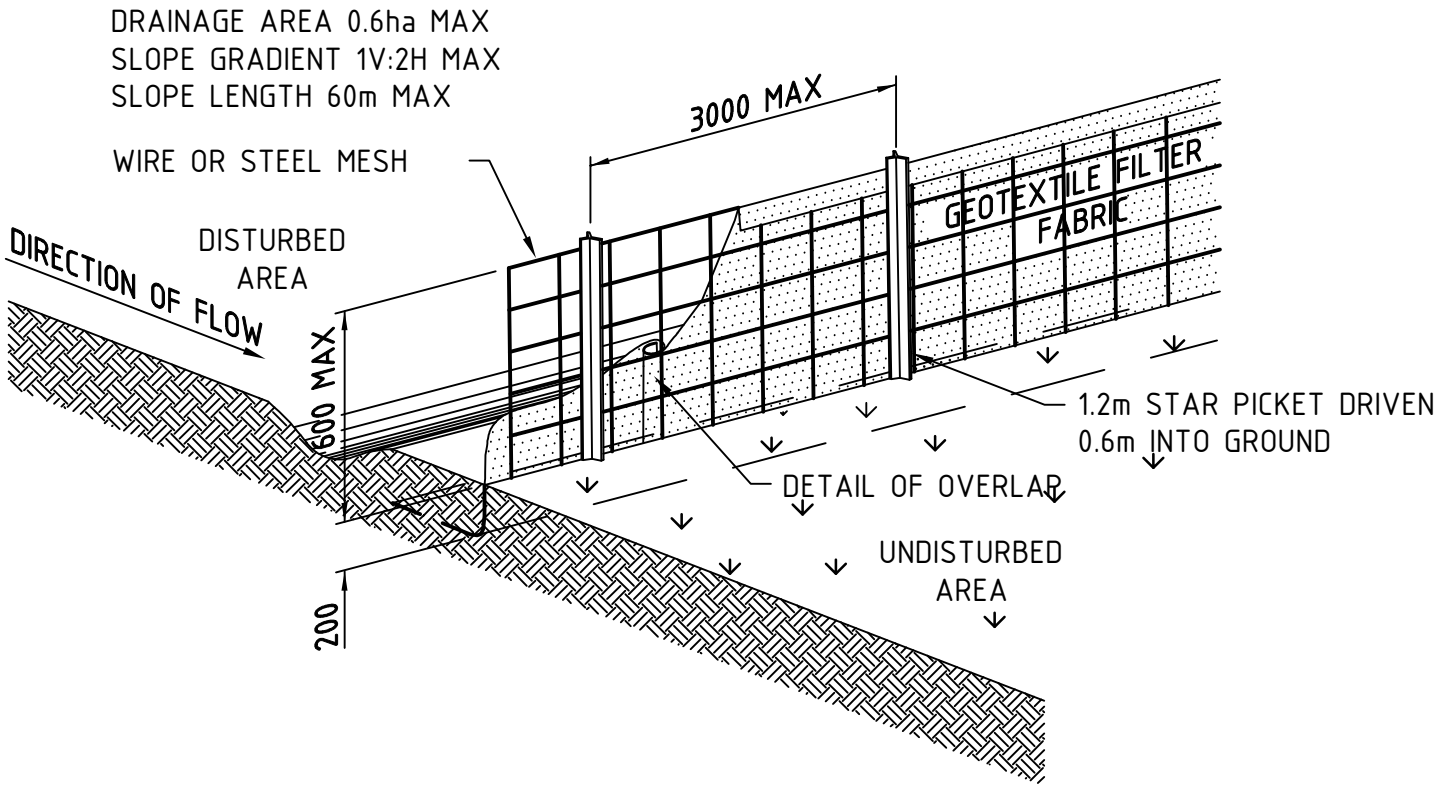
OTHER MATTERS

12. Acceptable receptors will be constructed for concrete and mortar slurries, paints, acid washings, light-weight waste materials and litter.
13. Any existing trees which form part of the final landscaping plan will be protected from construction activities by:
  - (a) Protecting them with barrier fencing or similar materials installed outside the drip line.
  - (b) Ensuring that nothing is nailed to them.
  - (c) Prohibiting paving, grading, sediment wash or placing of stockpiles within the drip line except under the following conditions.
    - (i) Encroachment only occurs on one side and no closer to the trunk than either 1.5 metres or half the distance between the outer edge of the drip line and the trunk, whichever ever is the greater
    - (ii) A drainage system that allows air and water to circulate through the root zone (e.g. a gravel bed) is placed under all fill layers of more than 300 millimetres depth
    - (iii) Care is taken not to cut roots unnecessarily nor to compact the soil around them.

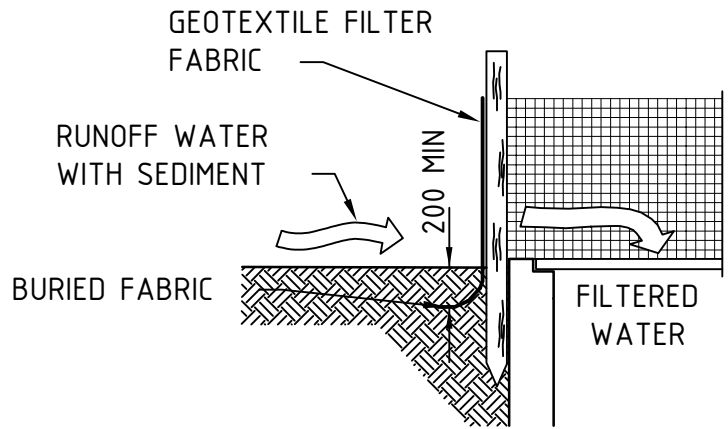
SITE INSPECTION & MAINTENANCE

14. Allow for grass stabilisation of unstable areas, open channels and rock batters as and where directed.
15. Allow for establishment of other erosion protection measures as directed.
16. Receptors for concrete and mortar slurries, paints, acid washings, light-weight waste materials and litter are to be emptied as necessary, disposal of waste shall be in a manner approved by the site superintendent.
17. Erosion and sediment control measures shall be inspected to ensure that they operate effectively, repairs and or maintenance shall be undertaken regularly and as required, particularly following storm events.
18. The contractor shall provide all monitoring controls & testing.

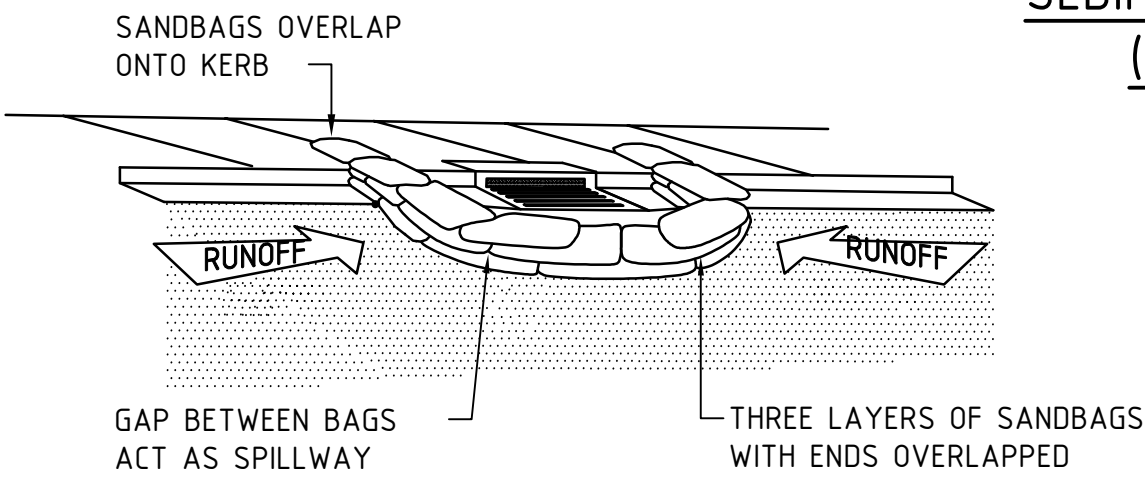
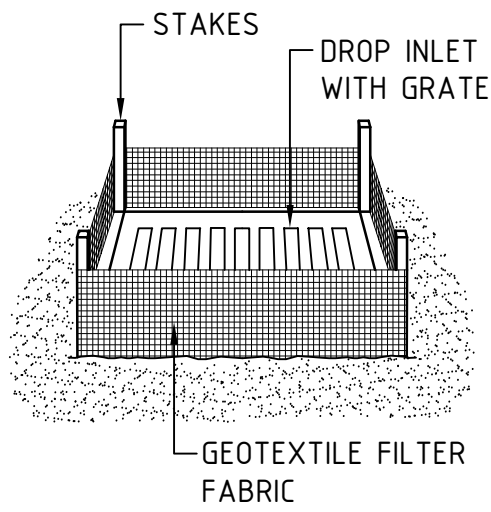
LEGEND	
	CONSTRUCT TEMPORARY SEDIMENT FENCE (REFER DWG C06)
	CONSTRUCT BARRIER FENCE (1800mm HIGH TEMPORARY CONSTRUCTION FENCE).
	CONSTRUCT TEMPORARY STABILISED SITE ACCESS (REFER DWG C06)
	INSTALL SANDBAG SEDIMENT TRAP (REFER DWG C06)
	INSTALL TEMPORARY GEOTEXTILE FILTER FABRIC DROP INLET SEDIMENT TRAP (REFER DWG C06).



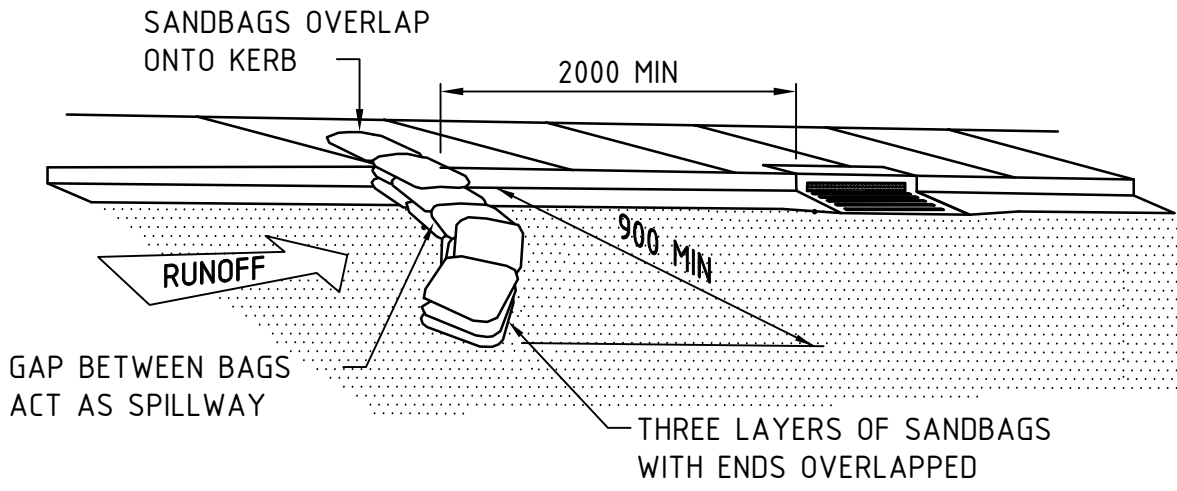
SEDIMENT FENCE  
(GEOTEXTILE FILTER FABRIC)  
NOT TO SCALE



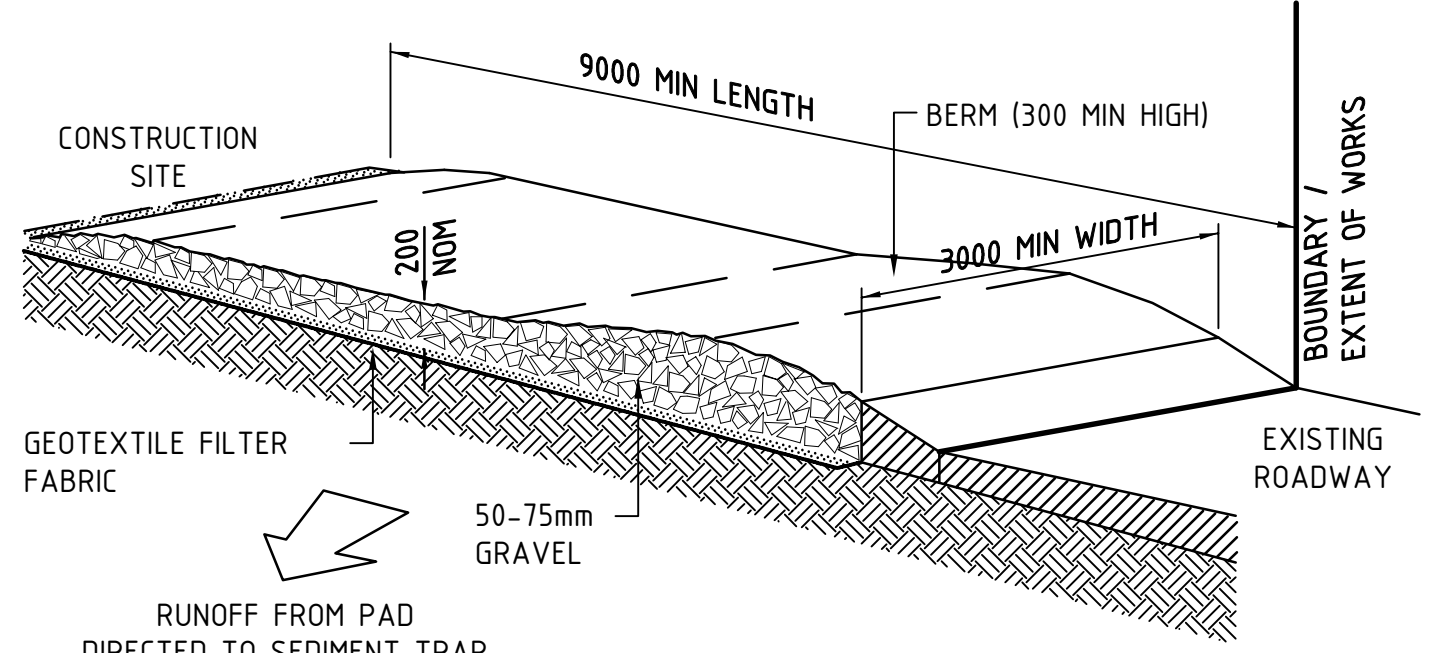
SEDIMENT TRAP FOR DROP INLET  
(GEOTEXTILE FILTER FABRIC)  
NOT TO SCALE



SEDIMENT TRAP FOR KERB INLET  
(AT LOW POINT - SANDBAG)  
NOT TO SCALE



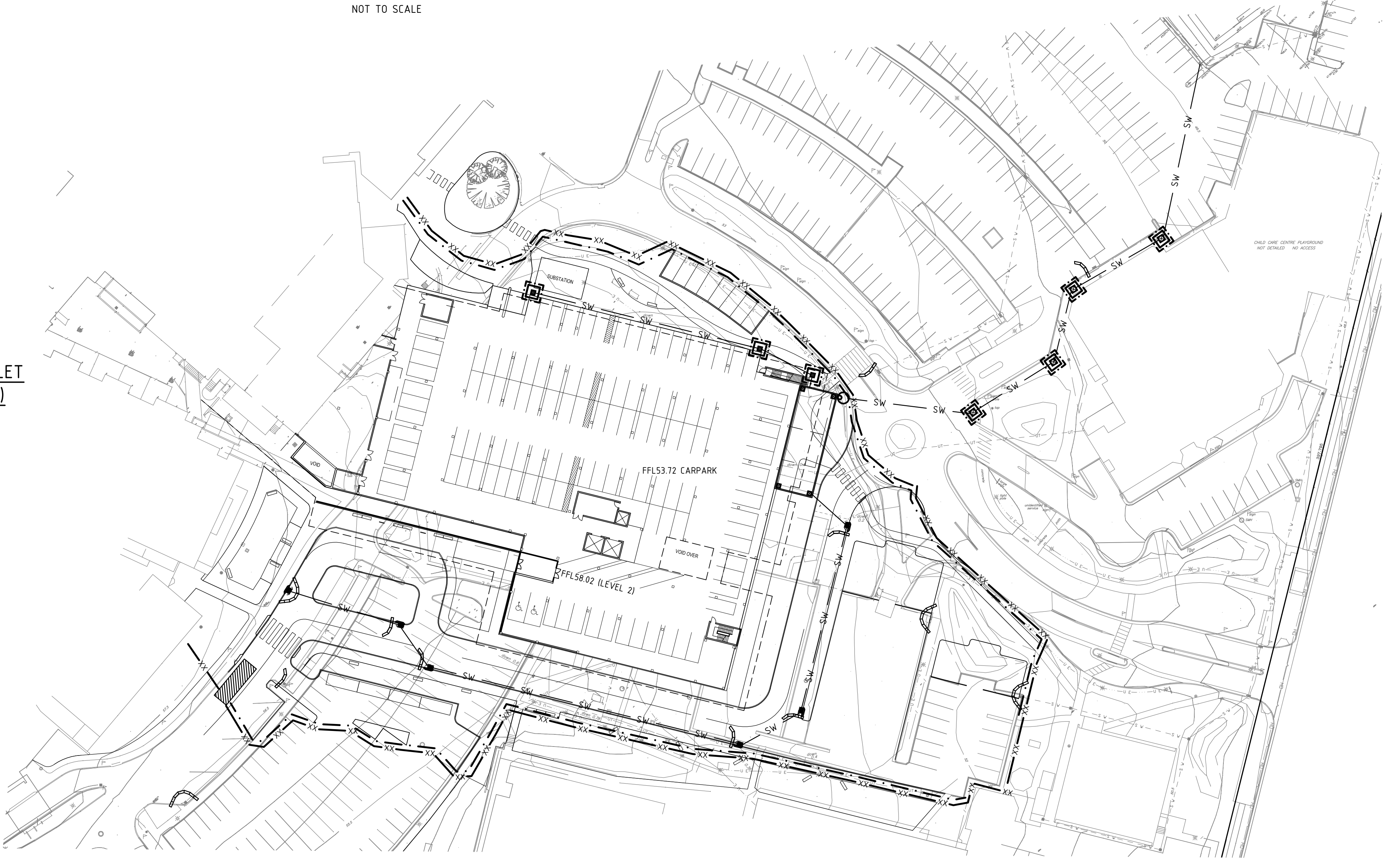
SEDIMENT TRAP FOR KERB INLET  
(ON GRADE - SANDBAG)  
NOT TO SCALE



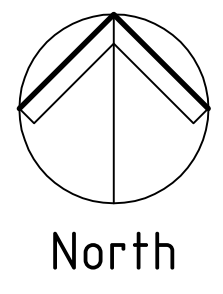
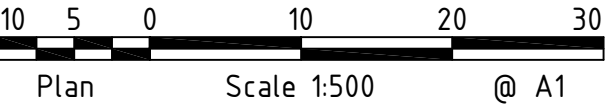
TEMPORARY SITE ENTRANCE  
NOT TO SCALE

MAINTENANCE

- THE TEMPORARY ACCESS SHALL BE MAINTAINED IN A CONDITION THAT PREVENTS TRACKING OR FLOWING OF SEDIMENT ONTO PUBLIC RIGHTS OF WAY.
- THIS MAY REQUIRE PERIODIC TOP DRESSING WITH ADDITIONAL GRAVEL AS CONDITIONS DEMAND AND REPAIR AND/OR CLEANOUT OF ANY MEASURES USED TO TRAP SEDIMENT.
- ALL SEDIMENT SPILLED, DROPPED, WASHED OR TRACKED ONTO PUBLIC RIGHTS OF WAY MUST BE REMOVED IMMEDIATELY.



Copyright  
This drawing remains the property of Hughes Trueman Pty. Ltd.  
It may only be used for the purpose for which it was commissioned &  
in accordance with the terms of engagement for that commission.  
Hughes Trueman denies any liability or responsibility for loss or  
damage caused by the inappropriate use of this drawing.  
\* Drawing Status Warning: Unless there is an authorised Hughes  
Trueman signature at \*, this drawing is not authorised for issue.  
This Drawing may have been prepared using C0 DUR,  
and may be incomplete if copied to BLACK & WHITE



**HughesTrueman**  
Consulting Engineers Planners & Managers  
ABN 53 831 529 091  
Level 2, 60 Pacific Hwy, PO Box 151, ST LEONARDS NSW 2065  
T +61 2 9439 2633 F +61 2 9438 4505 stleonards@hughestrueman.com.au

Project  
**NEPEAN HOSPITAL  
PENRITH**  
Client  
**PENRITH HEALTH CAMPUS REDEVELOPMENT**  
Architect/Project Manager  
**AURORA PROJECTS**

Drawing Title  
**EROSION AND SEDIMENT  
CONTROL CONCEPT PLAN  
NOTES AND DETAILS**  
Drawing No.  
**09S569C11**  
Sheet  
02  
Of  
02  
Rev  
**A**

300mm A1 SHEET

200mm

100mm