

APPENDIX D

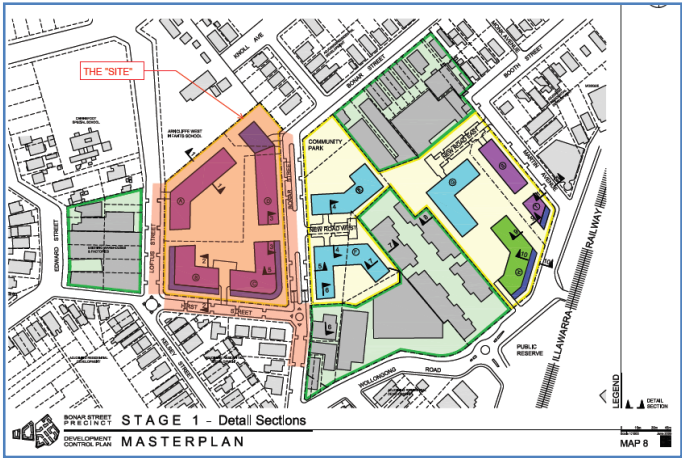
FLOOD MODELLING



MERITON

RE-GRADING OF BONAR STREET, ARNCLIFFE

Hydraulic Assessment



October 2009





Level 2, 160 Clarence Street
Sydney, NSW, 2000

Tel: 9299 2855
Fax: 9262 6208
Email: wma@wmawater.com.au
Web: www.wmawater.com.au

RE-GRADING OF BONAR STREET, ARNCLIFFE: HYDRAULIC ASSESSMENT

OCTOBER, 2009

Project Re-grading of Bonar Street, Arncliffe: Hydraulic Assessment		Project Number 29011	
Client Meriton		Client's Representative Geoff Hopkins	
Authors Richard Dewar		Prepared by	
Date 2 October 2009		Verified by	
Revision	Description		Date
1	Final Report		2 October 2009

**RE-GRADING OF BONAR STREET, ARNCLIFFE: HYDRAULIC
ASSESSMENT**

TABLE OF CONTENTS

	PAGE
1. INTRODUCTION	1
2. HYDRAULIC ASSESSMENT	2
2.1. Approach	2
2.2. Hydraulic Model Setup.....	3
2.3. Design Scenarios.....	3
2.3.1. Existing Pipes	3
2.3.2. Adopted Design	4
Figure A Run10 100y ARI event- Difference Water Levels	
Figure B Run10 100y ARI event- Water Levels	

1. INTRODUCTION

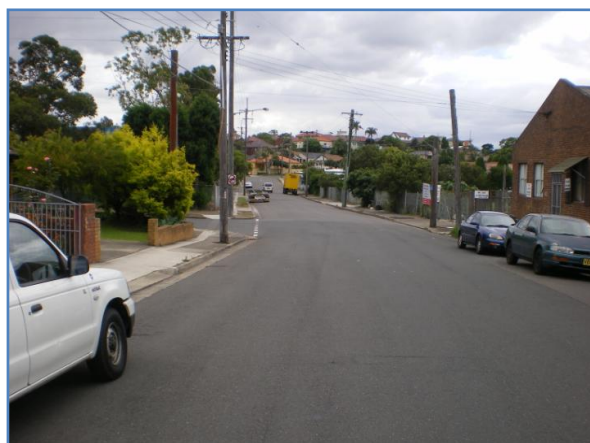
Meriton are proposing to re-grade Bonar Street, Arncliffe as part of their re-development of an adjacent site. WMAwater was engaged by Meriton to provide a hydraulic assessment of the proposed road works to quantify the change in the 100 year ARI (Average Recurrence Interval) flood levels in Hirst and Bonar Streets and in the adjoining properties.

WMAwater (formerly Webb, McKeown & Associates Pty Ltd) have over 25 years of experience in the field of hydrology and hydraulic modelling in NSW and are familiar with the local area and the associated flood problems.

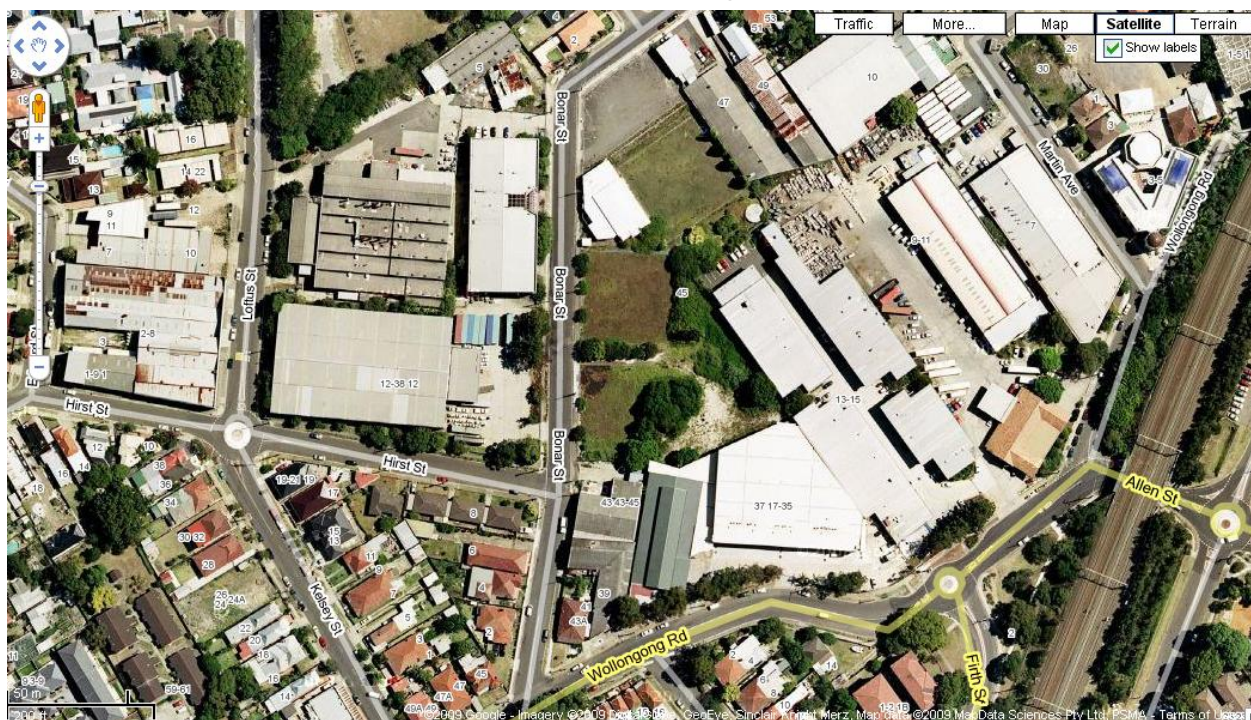
Photographs of the study area are provided below.



View east to Bonar Street



View north past Hirst Street intersection



Aerial image of study area courtesy of Google Maps