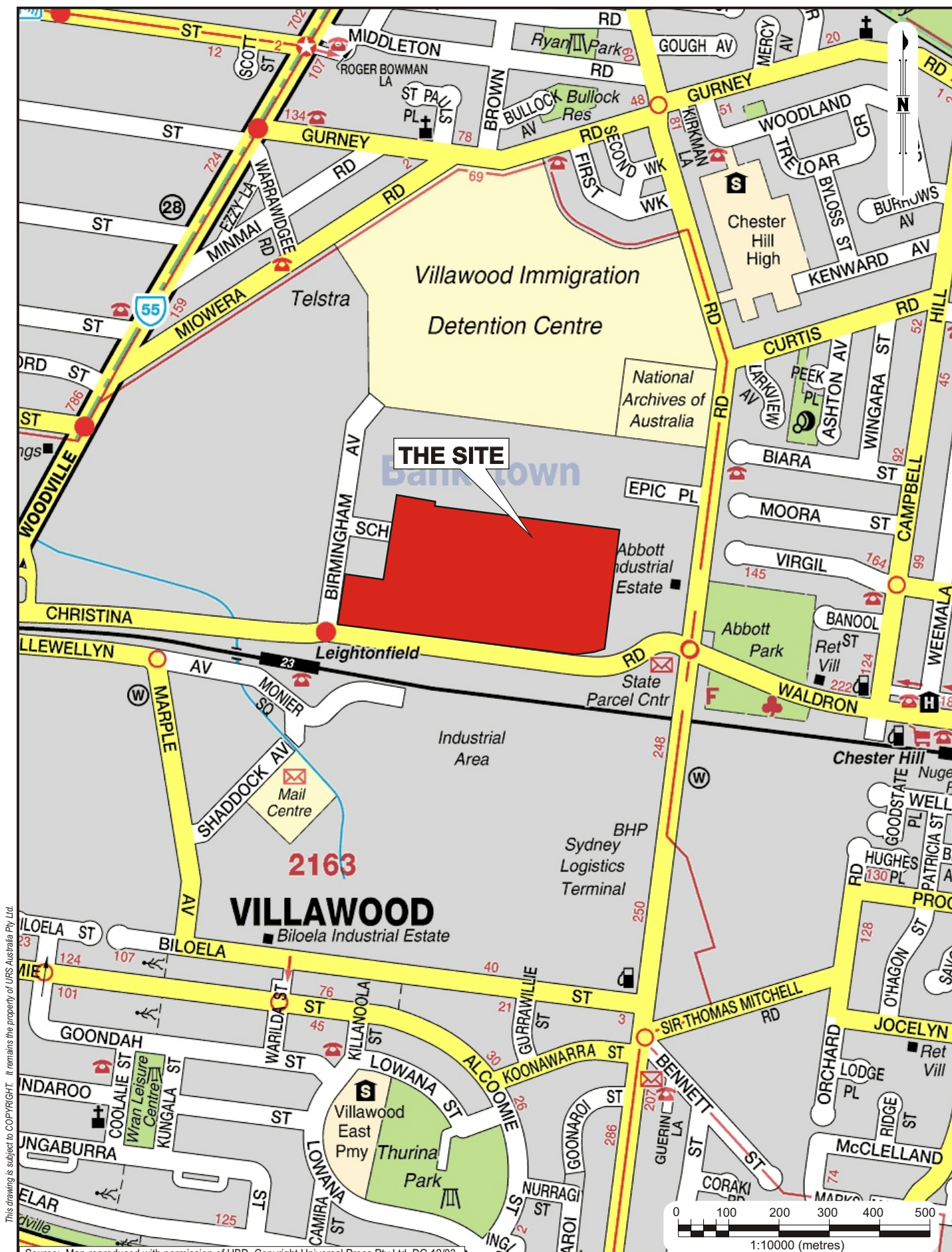
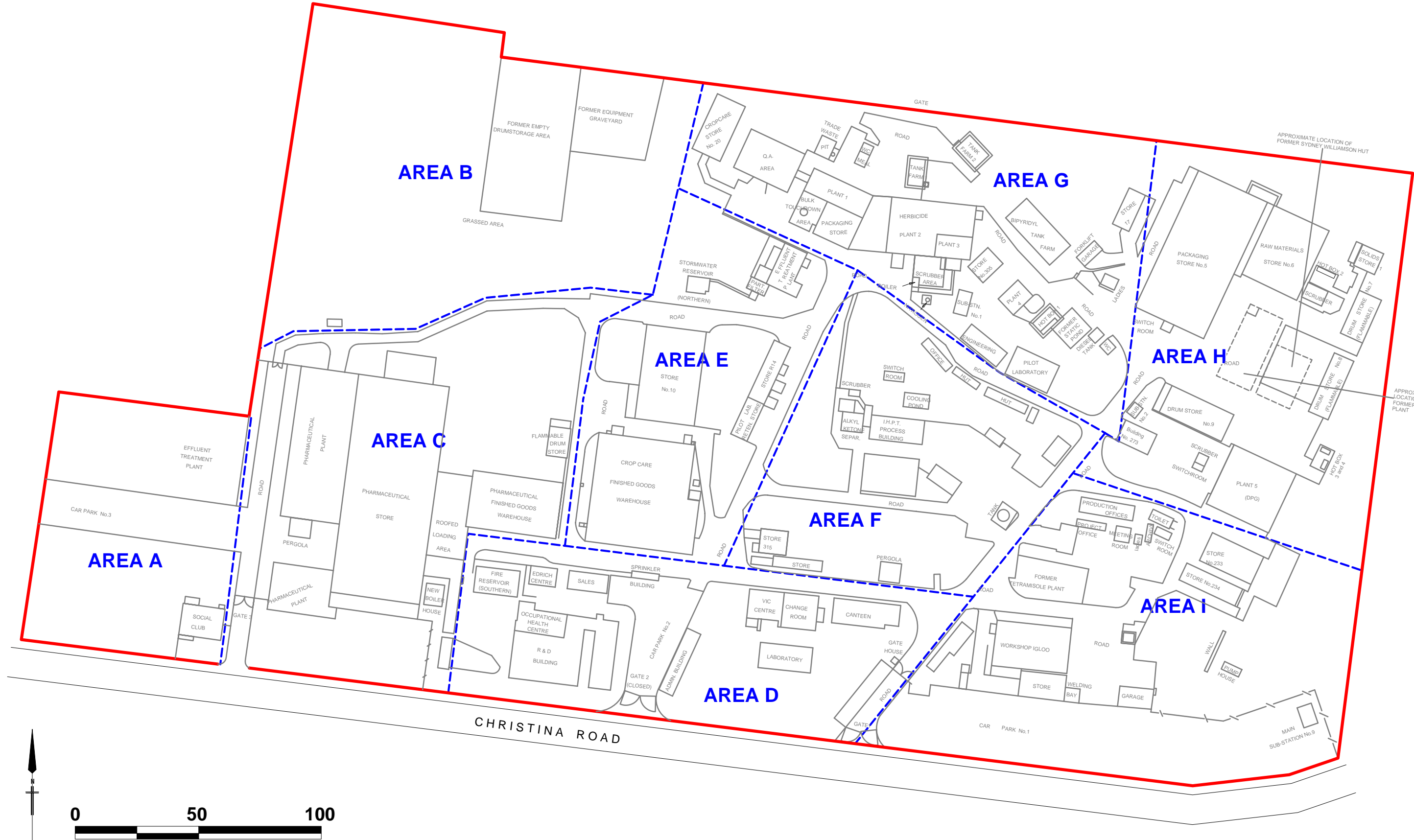



Figures



<p>Client</p> <p>ORICA AUSTRALIA PTY LIMITED</p>	<p>Project</p> <p>HUMAN HEALTH AND ENVIRONMENTAL RISK ASSESSMENT ORICA VILLAWOOD SITE</p>	<p>Title</p> <p>SITE LOCATION</p>
<p>URS</p>	<p>Drawn: AJW Approved: JLW Date: 14/06/2007</p> <p>Job No.: 43217484 File No. 43217484-001.cdr</p>	<p>Figure: 1</p> <p>Rev. A</p> <p>A4</p>



- Legend**
- Site Boundary
 - Area Boundary

Client	Project			Title			
ORICA AUSTRALIA PTY LTD	HUMAN HEALTH AND ENVIRONMENTAL RISK ASSESSMENT ORICA VILLAWOOD SITE			SITE LAYOUT (AREAS A TO I)			
	Drawn:	AJW	Approved:	JLW	Date:	14/06/2007	Figure: 2
	Job No:	43217484		File No:	43217484.003.wor		



Legend	
	Site Boundary
	Impacted Soil Zones
	Area Boundary
	Contaminated Groundwater Plume 1
	Contaminated Groundwater Plume 2
	Contaminated Groundwater Plume 3
	Contaminated Groundwater Plume 4
	Contaminated Groundwater Plume 5
	Contaminated Groundwater Plume 1 and 2 Overlap

Client
ORICA AUSTRALIA PTY LTD

Project		
HUMAN HEALTH AND ENVIRONMENTAL RISK ASSESSMENT ORICA VILLAWOOD SITE		
Drawn:	AY/SB	Approved: SB
Date:	09/02/2011	
Job No:	43217484	File No: 43217484.007.wor

Title	
LOCATION OF IMPACTED SOIL ZONES (ISZ) AND INFERRED GROUNDWATER PLUMES	
Figure:	3



Source: Aerial Image SKM Ausimage

<div>Legend</div> <div><div></div>Site Boundary</div> <div><div></div>Flux Hood and Soil Gas Locations (HLA)</div> <div><div></div>Vapour Assessment Locations (CH2MHill)</div>	Client		Project			Title		
	ORICA AUSTRALIA PTY LTD		HUMAN HEALTH AND ENVIRONMENTAL RISK ASSESSMENT ORICA VILLAWOOD SITE			APPROXIMATE AIR SAMPLING LOCATIONS (HLA AND CH2MHill)		
	<div>URS</div>		Drawn:	AJW	Approved:	JLW	Date:	14/06/2007
			Job No:		43217484		File No:	43217484.005.wor
		Figure:					4	