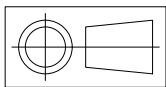


Material

EXOTEC® FACADE PANEL



Drawn to AS 1100

Dimensions in Millimetres

Do Not Scale

James Hardie Building Products

James Hardie Australia Pty Limited - ABN 12 084 635 558

This drawing is confidential. This drawing is the property of the above company and must not be used, disclosed or reproduced in any form what so ever except as authorised in writing by the above company. This drawing must be returned with quotation and/or on completion of job as applicable.

TECHNICAL PRODUCTS DEVELOPMENT
AUSTRALIA

EXOTEC® FACADE PANEL AND FIXING SYSTEM
PARKLANDS DEVELOPMENT
GOLD COAST QLD
WINDOW JAMB SECTION

Drawn Date

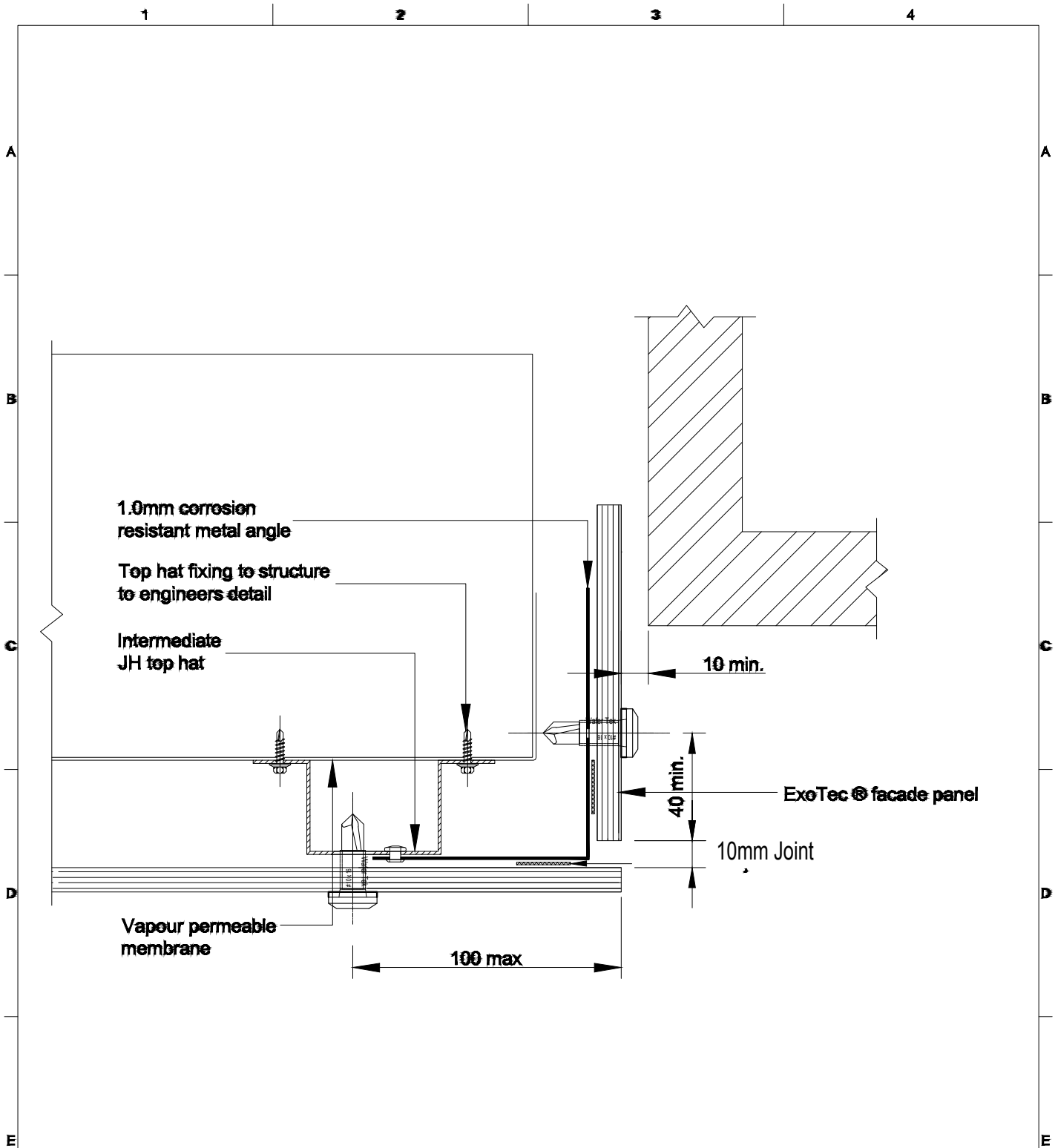
Checked Date

Approved Date

Sheet Size A4 Scale NTS

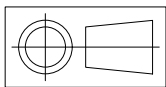
Drawing Number

Revision
A



Material

EXOTEC® FACADE PANEL



Drawn to AS 1100

Dimensions in Millimetres

Do Not Scale

James Hardie Building Products

James Hardie Australia Pty Limited - ABN 12 084 635 558

This drawing is confidential. This drawing is the property of the above company and must not be used, disclosed or reproduced in any form what so ever except as authorised in writing by the above company. This drawing must be returned with quotation and/or on completion of job as applicable.

TECHNICAL PRODUCTS DEVELOPMENT
AUSTRALIA

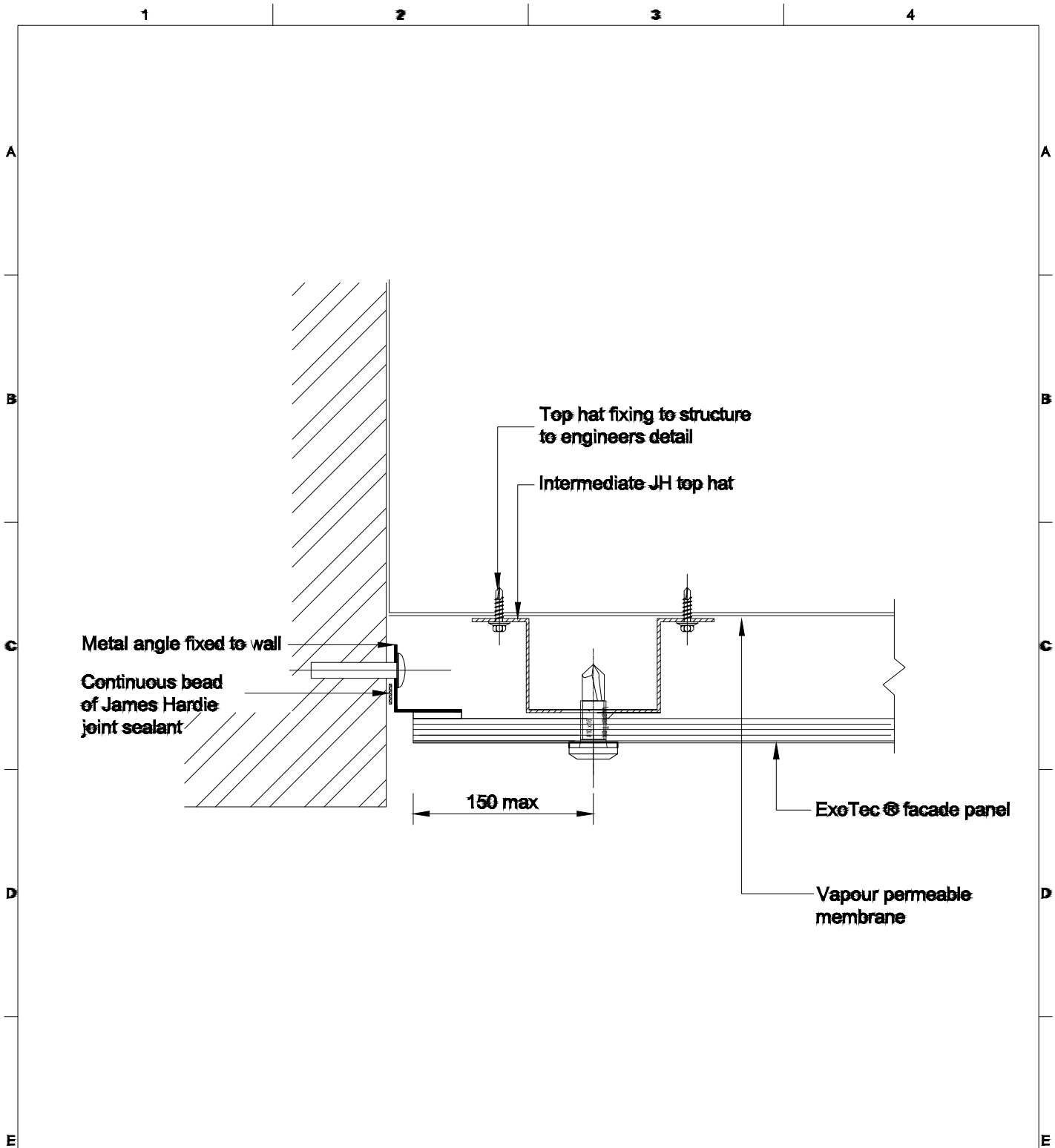
EXOTEC® FACADE PANEL AND FIXING SYSTEM

PARKLANDS DEVELOPMENT

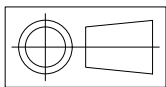
GOLD COAST QLD

WINDOW JAMB SECTION

Drawn	Date
Checked	Date
Approved	Date
Sheet Size A4	Scale NTS
Drawing Number	
Revision A	



Material
EXOTEC® FACADE PANEL



Drawn to AS 1100
Dimensions in Millimetres
Do Not Scale

**James Hardie
Building Products**

James Hardie Australia Pty Limited - ABN 12 084 635 558
This drawing is confidential. This drawing is the property of the above company and must not be used, disclosed or reproduced in any form what so ever except as authorised in writing by the above company. This drawing must be returned with quotation and/or on completion of job as applicable.

**TECHNICAL PRODUCTS DEVELOPMENT
AUSTRALIA**

**EXOTEC® FACADE PANEL AND FIXING SYSTEM
PARKLANDS DEVELOPMENT
GOLD COAST QLD
WINDOW JAMB SECTION**

Drawn Date

Checked Date

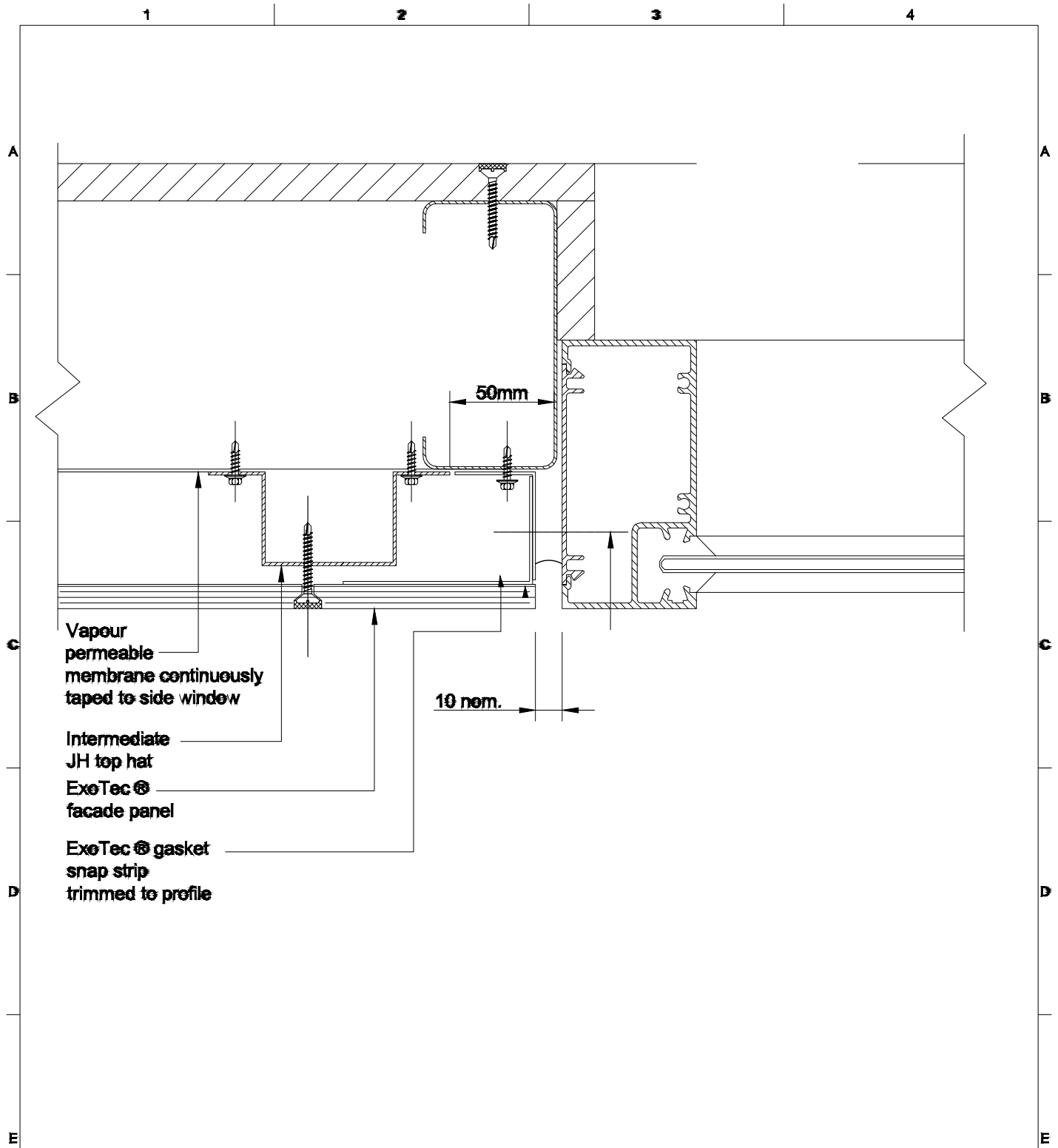
Approved Date

Sheet Size
A4

Scale
NTS

Drawing Number

Revision
A



Vapour permeable membrane continuously taped to side window

Intermediate JH top hat

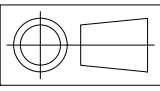
ExoTec® facade panel

ExoTec® gasket snap strip trimmed to profile

10 nom.

50mm

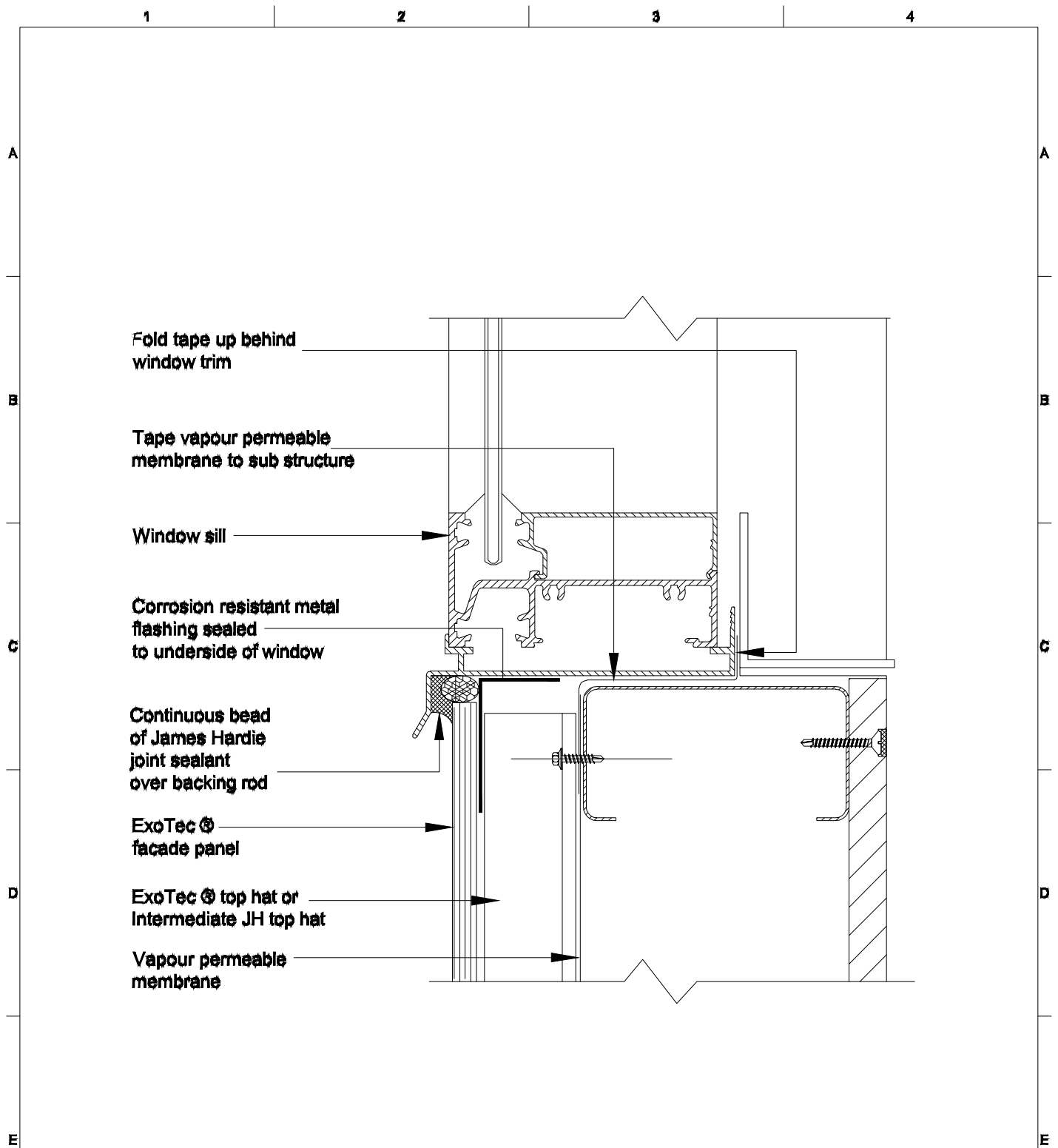
Material
EXOTEC® FACADE PANEL


Drawn to AS 1100
Dimensions in Millimetres
Do Not Scale

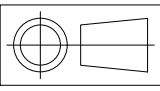
James Hardie Building Products
James Hardie Australia Pty Limited - ABN 12 084 635 558
This drawing is confidential. This drawing is the property of the above company and must not be used, disclosed or reproduced in any form what so ever except as authorised in writing by the above company. This drawing must be returned with quotation and/or on completion of job as applicable.

TECHNICAL PRODUCTS DEVELOPMENT AUSTRALIA
EXOTEC® FACADE PANEL AND FIXING SYSTEM
PARKLANDS DEVELOPMENT
GOLD COAST QLD
WINDOW JAMB SECTION

Drawn	Date
Checked	Date
Approved	Date
Sheet Size A4	Scale NTS
Drawing Number	
Revision A	



Material
EXOTEC® FACADE PANEL


Drawn to AS 1100
Dimensions in Millimetres
Do Not Scale

**James Hardie
Building Products**

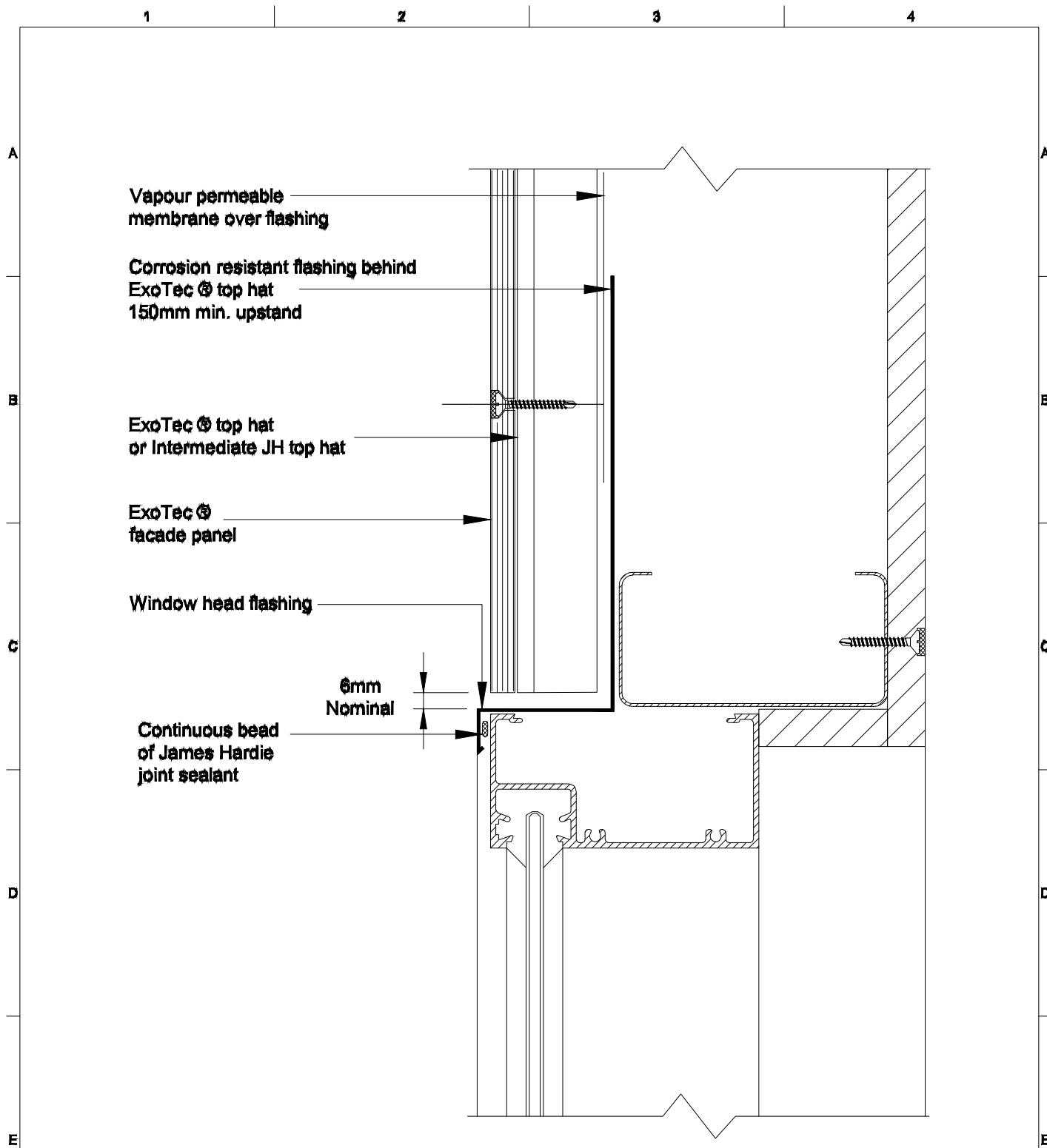
James Hardie Australia Pty Limited - ABN 12 084 635 558
This drawing is confidential. This drawing is the property of the above company and must not be used, disclosed or reproduced in any form what so ever except as authorised in writing by the above company. This drawing must be returned with quotation and/or on completion of job as applicable.

**TECHNICAL PRODUCTS DEVELOPMENT
AUSTRALIA**

**EXOTEC® FACADE PANEL AND FIXING SYSTEM
PARKLANDS DEVELOPMENT
GOLD COAST QLD**

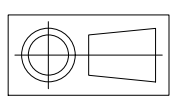
WINDOW JAMB SECTION

Drawn	Date
Checked	Date
Approved	Date
Sheet Size A4	Scale NTS
Drawing Number	
Revision A	



Material

EXOTEC® FACADE PANEL



Drawn to AS 1100

Dimensions in Millimetres

Do Not Scale

James Hardie Building Products

James Hardie Australia Pty Limited - ABN 12 084 635 558

This drawing is confidential. This drawing is the property of the above company and must not be used, disclosed or reproduced in any form what so ever except as authorised in writing by the above company. This drawing must be returned with quotation and/or on completion of job as applicable.

TECHNICAL PRODUCTS DEVELOPMENT AUSTRALIA

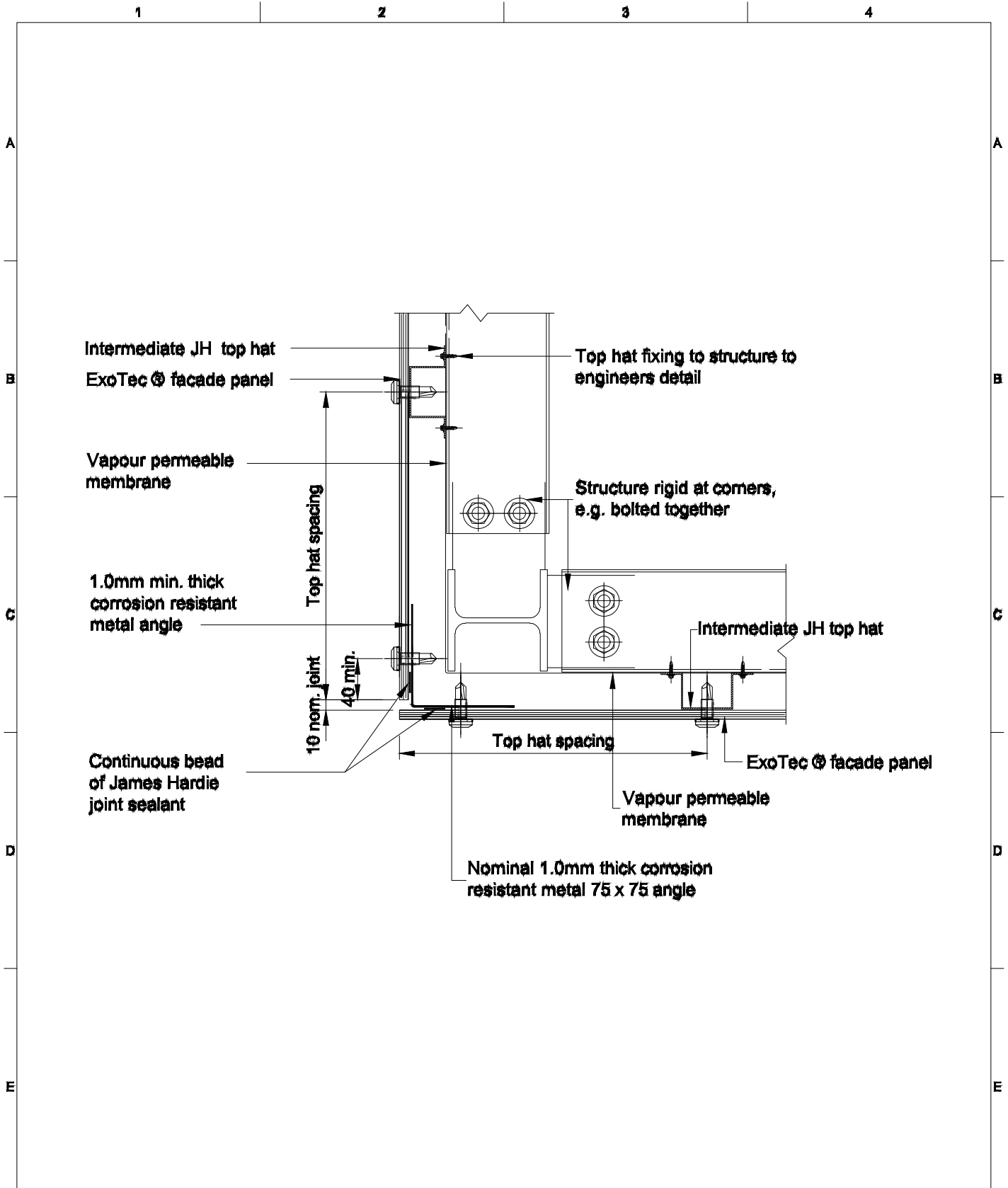
EXOTEC® FACADE PANEL AND FIXING SYSTEM

PARKLANDS DEVELOPMENT

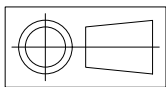
GOLD COAST QLD

WINDOW JAMB SECTION

Drawn	Date
Checked	Date
Approved	Date
Sheet Size A4	Scale NTS
Drawing Number	
Revision A	



Material
EXOTEC® FACADE PANEL



Drawn to AS 1100
Dimensions in Millimetres
Do Not Scale

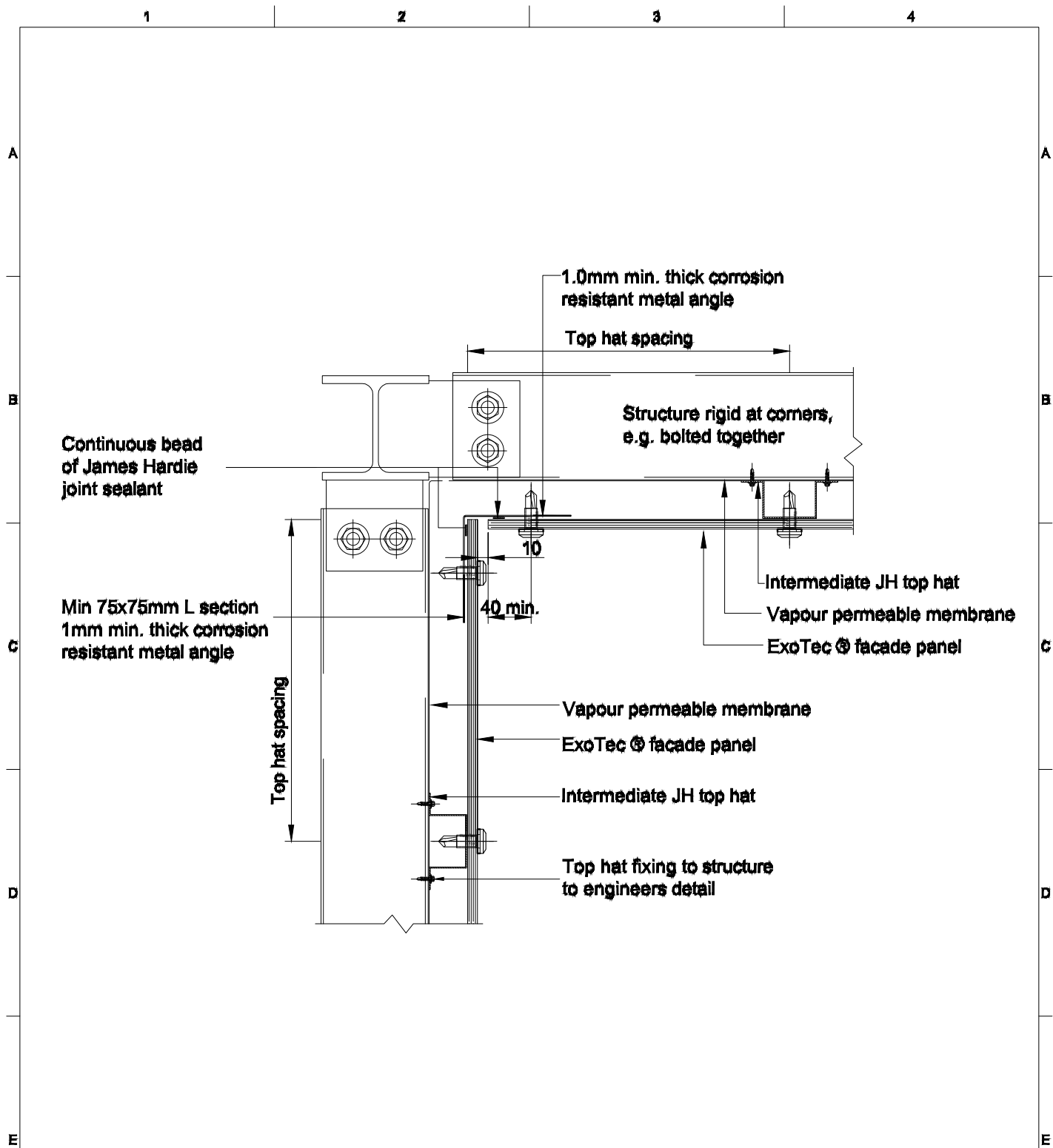
**James Hardie
Building Products**

James Hardie Australia Pty Limited - ABN 12 084 635 558
This drawing is confidential. This drawing is the property of the above company and must not be used, disclosed or reproduced in any form what so ever except as authorised in writing by the above company. This drawing must be returned with quotation and/or on completion of job as applicable.

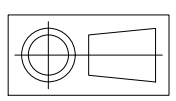
**TECHNICAL PRODUCTS DEVELOPMENT
AUSTRALIA**

**EXOTEC® FACADE PANEL AND FIXING SYSTEM
PARKLANDS DEVELOPMENT
GOLD COAST QLD
WINDOW JAMB SECTION**

Drawn	Date
Checked	Date
Approved	Date
Sheet Size A4	Scale NTS
Drawing Number	
Revision A	



Material
EXOTEC® FACADE PANEL



Drawn to AS 1100
Dimensions in Millimetres
Do Not Scale

**James Hardie
Building Products**

James Hardie Australia Pty Limited - ABN 12 084 635 558
This drawing is confidential. This drawing is the property of the above company and must not be used, disclosed or reproduced in any form what so ever except as authorised in writing by the above company. This drawing must be returned with quotation and/or on completion of job as applicable.

**TECHNICAL PRODUCTS DEVELOPMENT
AUSTRALIA**

**EXOTEC® FACADE PANEL AND FIXING SYSTEM
PARKLANDS DEVELOPMENT
GOLD COAST QLD
WINDOW JAMB SECTION**

Drawn	Date
Checked	Date
Approved	Date
Sheet Size A4	Scale NTS
Drawing Number	
Revision A	

1

2

3

4

A

A

B

B

C

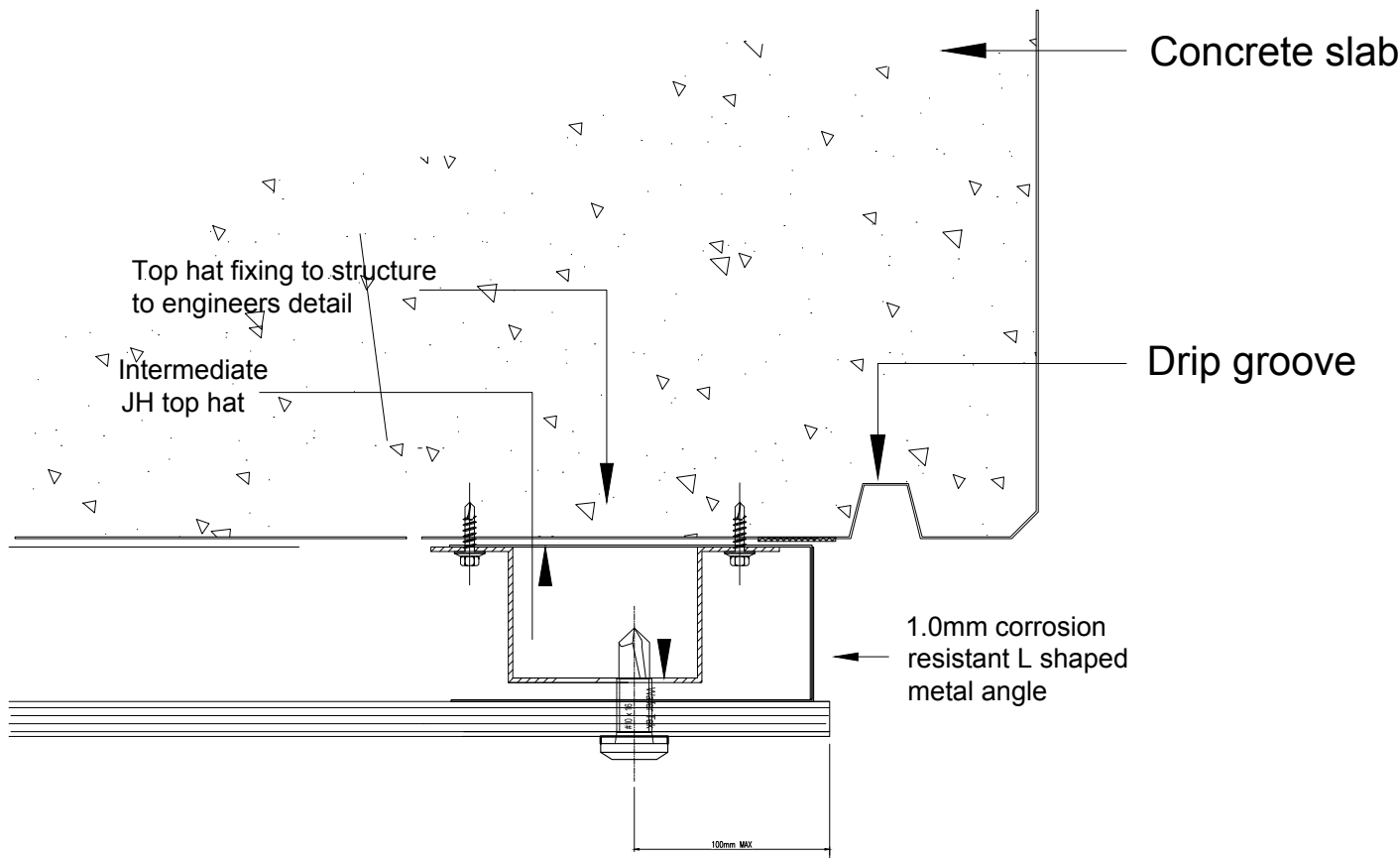
C

D

D

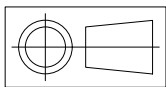
E

E



Material

EXOTEC® FACADE PANEL



Drawn to AS 1100

Dimensions in Millimetres

Do Not Scale

**James Hardie
Building Products**

James Hardie Australia Pty Limited - ABN 12 084 635 558
This drawing is confidential. This drawing is the property of the above company and must not be used, disclosed or reproduced in any form what so ever except as authorised in writing by the above company. This drawing must be returned with quotation and/or on completion of job as applicable.

**TECHNICAL PRODUCTS DEVELOPMENT
AUSTRALIA**

**EXOTEC® FACADE PANEL AND FIXING SYSTEM
PARKLANDS DEVELOPMENT
GOLD COAST QLD
WINDOW JAMB SECTION**

Drawn

Date

Checked

Date

Approved

Date

Sheet Size
A4

Scale
NTS

Drawing Number

Revision
A

1

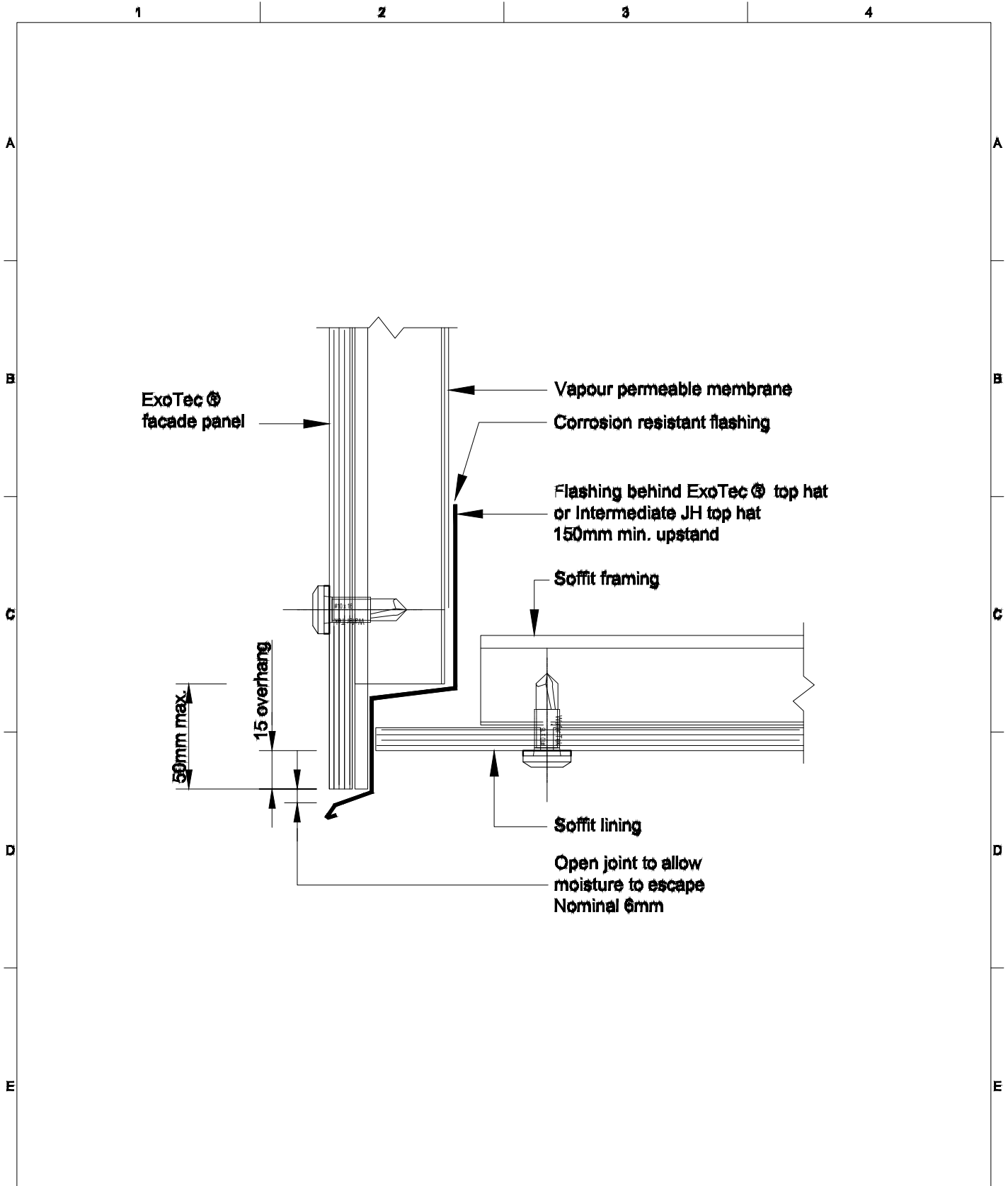
2

3

4

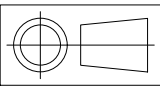
F

F



Material

EXOTEC® FACADE PANEL



Drawn to AS 1100

Dimensions in Millimetres

Do Not Scale

James Hardie Building Products

James Hardie Australia Pty Limited - ABN 12 084 635 558

This drawing is confidential. This drawing is the property of the above company and must not be used, disclosed or reproduced in any form what so ever except as authorised in writing by the above company. This drawing must be returned with quotation and/or on completion of job as applicable.

TECHNICAL PRODUCTS DEVELOPMENT AUSTRALIA

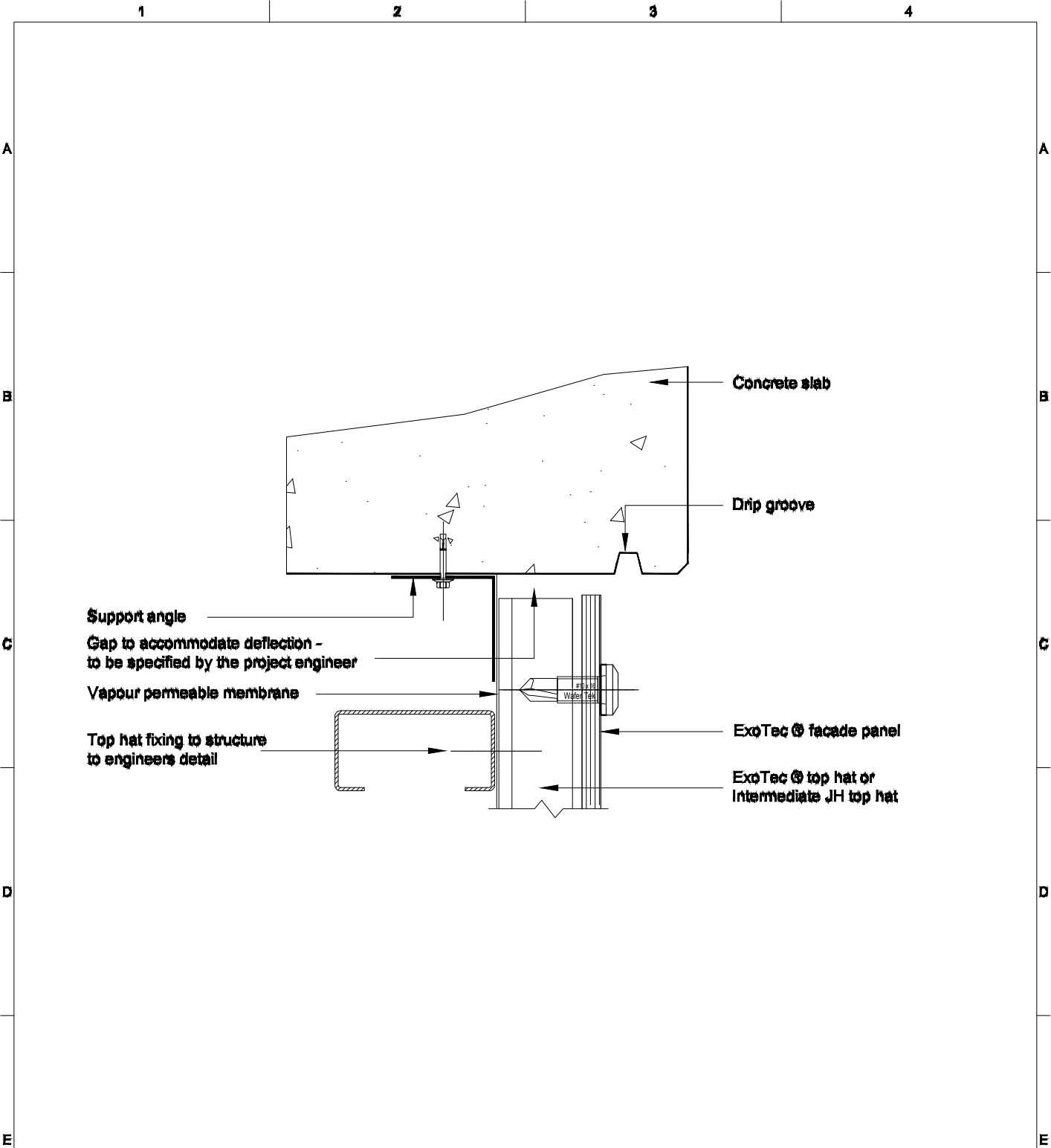
EXOTEC® FACADE PANEL AND FIXING SYSTEM

PARKLANDS DEVELOPMENT

GOLD COAST QLD

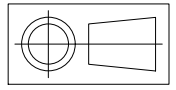
WINDOW JAMB SECTION

Drawn	Date
Checked	Date
Approved	Date
Sheet Size A4	Scale NTS
Drawing Number	
Revision A	



Material

EXOTEC® FACADE PANEL



Drawn to AS 1100

Dimensions in Millimetres

Do Not Scale

James Hardie
Building Products

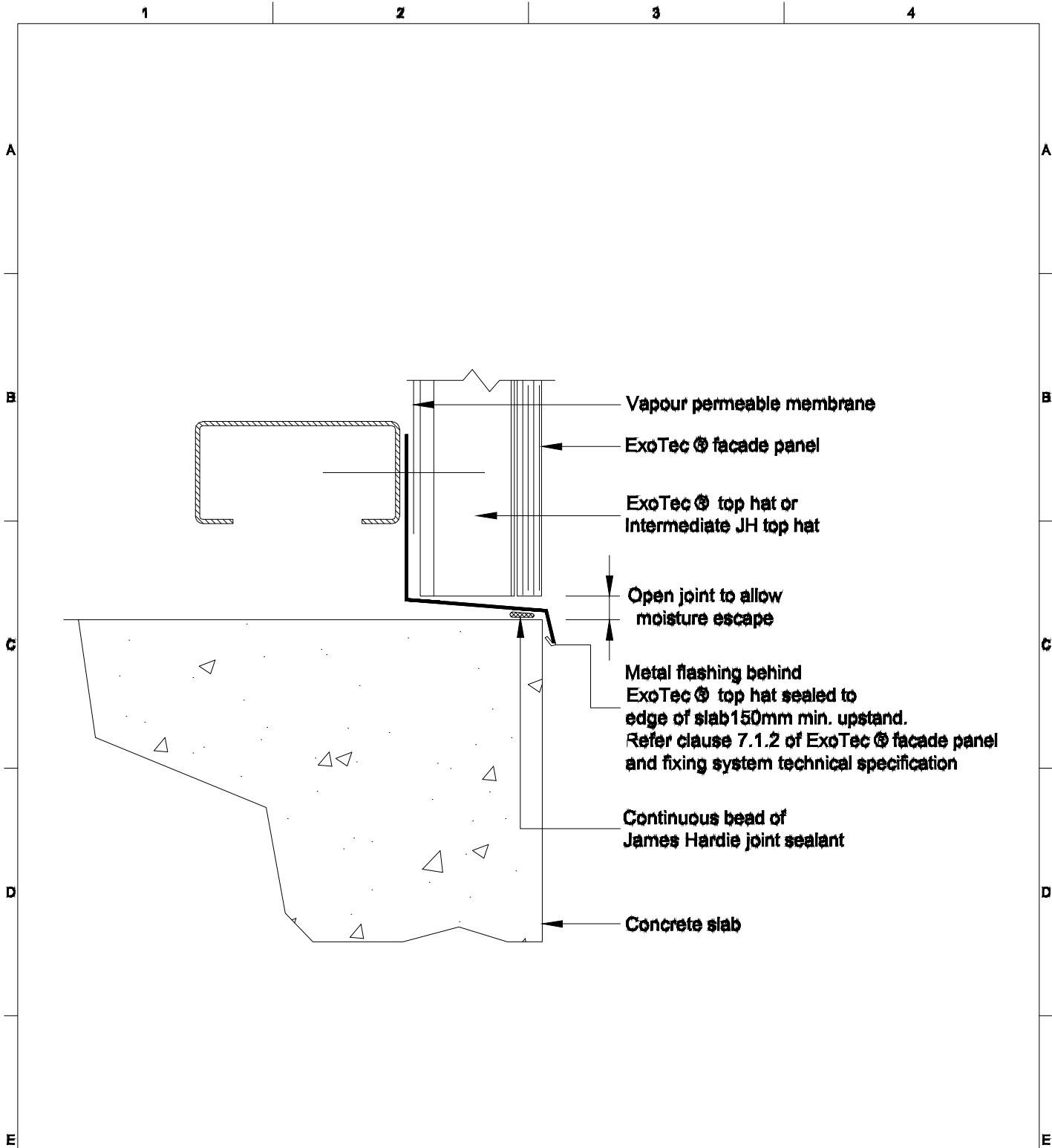
James Hardie Australia Pty Limited - ABN 12 084 635 558

This drawing is confidential. This drawing is the property of the above company and must not be used, disclosed or reproduced in any form what so ever except as authorised in writing by the above company. This drawing must be returned with quotation and/or on completion of job as applicable.

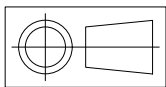
TECHNICAL PRODUCTS DEVELOPMENT
AUSTRALIA

EXOTEC® FACADE PANEL AND FIXING SYSTEM
PARKLANDS DEVELOPMENT
GOLD COAST QLD
WINDOW JAMB SECTION

Drawn	Date
Checked	Date
Approved	Date
Sheet Size A4	Scale NTS
Drawing Number	
Revision A	



Material
EXOTEC® FACADE PANEL



Drawn to AS 1100
Dimensions in Millimetres
Do Not Scale

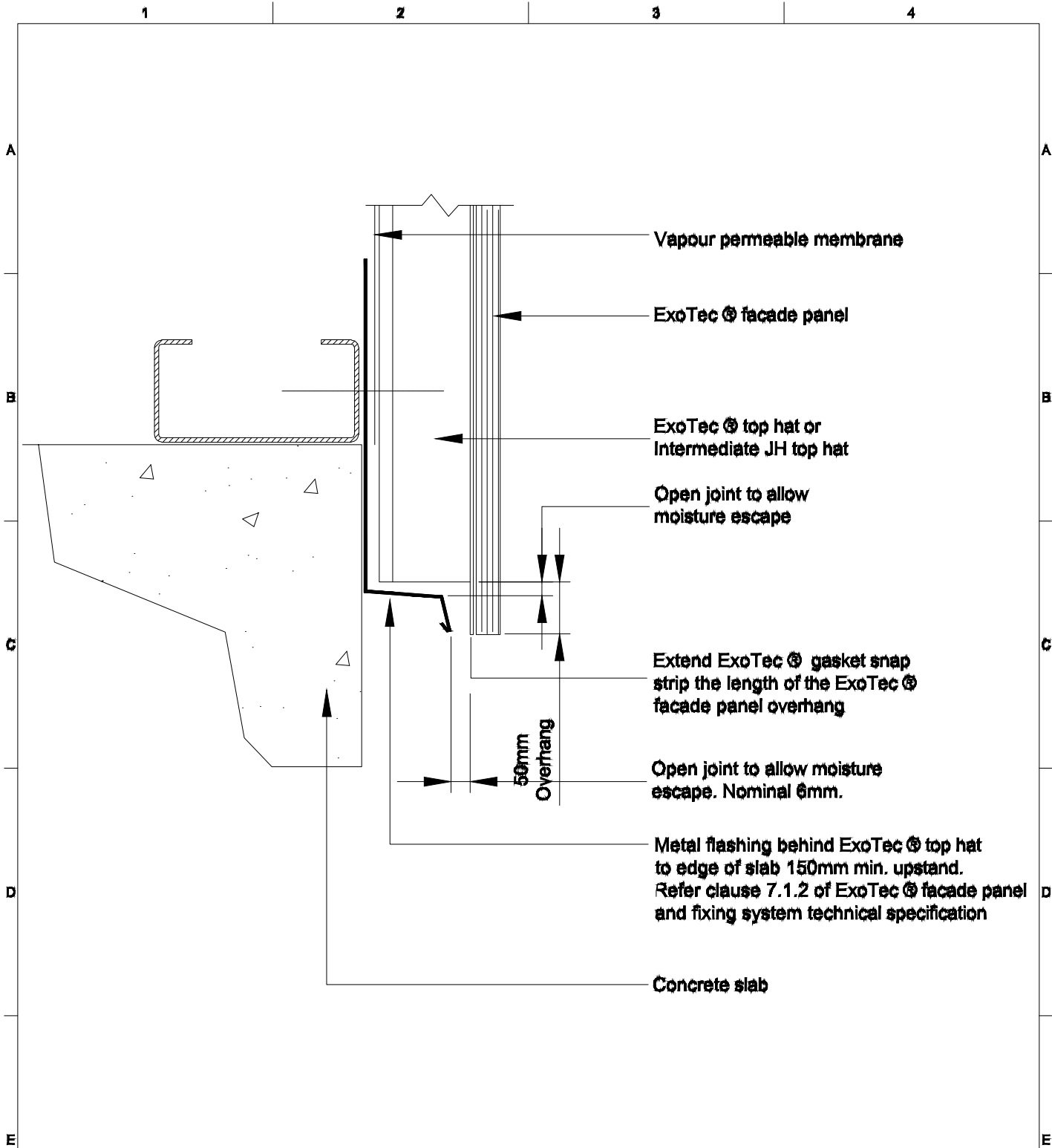
**James Hardie
Building Products**

James Hardie Australia Pty Limited - ABN 12 084 635 558
This drawing is confidential. This drawing is the property of the above company and must not be used, disclosed or reproduced in any form what so ever except as authorised in writing by the above company. This drawing must be returned with quotation and/or on completion of job as applicable.

**TECHNICAL PRODUCTS DEVELOPMENT
AUSTRALIA**

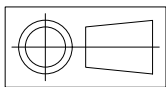
**EXOTEC® FACADE PANEL AND FIXING SYSTEM
PARKLANDS DEVELOPMENT
GOLD COAST QLD
WINDOW JAMB SECTION**

Drawn	Date
Checked	Date
Approved	Date
Sheet Size A4	Scale NTS
Drawing Number	
Revision A	



Material

EXOTEC® FACADE PANEL



Drawn to AS 1100

Dimensions in Millimetres

Do Not Scale

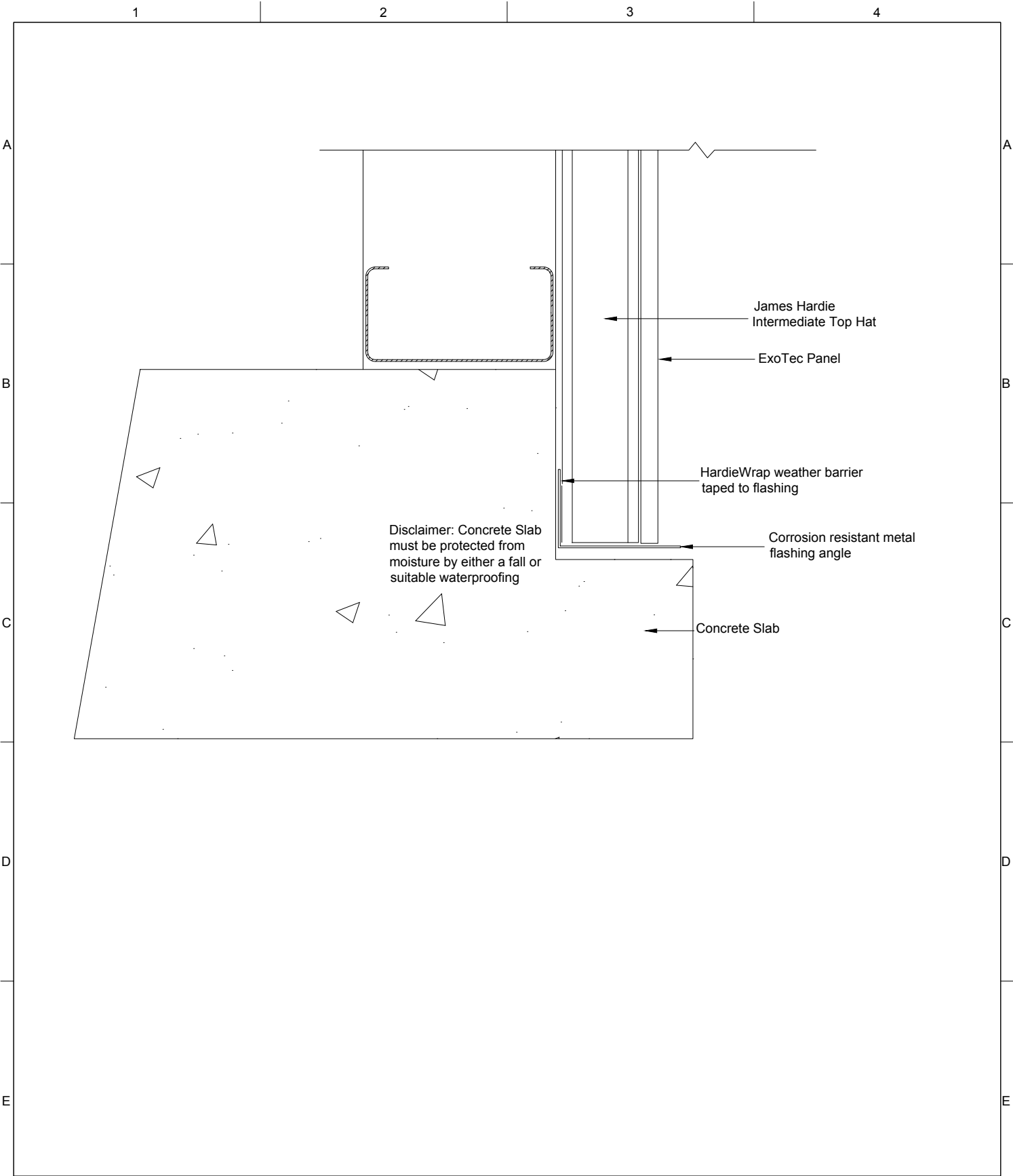
James Hardie
Building Products

James Hardie Australia Pty Limited - ABN 12 084 635 558
This drawing is confidential. This drawing is the property of the above company and must not be used, disclosed or reproduced in any form what so ever except as authorised in writing by the above company. This drawing must be returned with quotation and/or on completion of job as applicable.

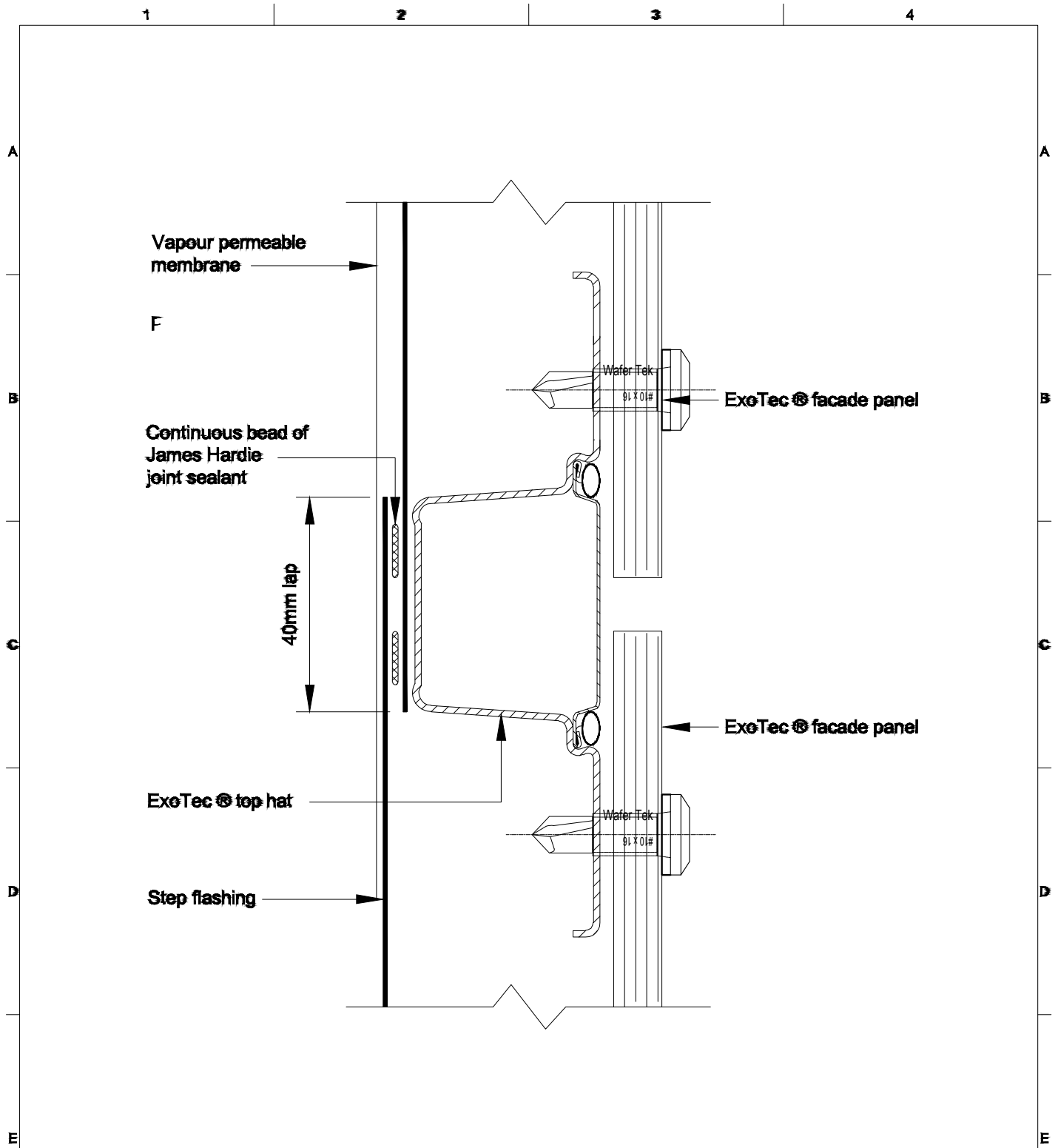
TECHNICAL PRODUCTS DEVELOPMENT
AUSTRALIA

EXOTEC® FACADE PANEL AND FIXING SYSTEM
PARKLANDS DEVELOPMENT
GOLD COAST QLD
WINDOW JAMB SECTION

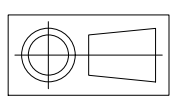
Drawn	Date
Checked	Date
Approved	Date
Sheet Size A4	Scale NTS
Drawing Number	
Revision A	



Material EXOTEC® FACADE PANEL	James Hardie Building Products James Hardie Australia Pty Limited - ABN 12 084 635 558 <small>This drawing is confidential. This drawing is the property of the above company and must not be used, disclosed or reproduced in any form what so ever except as authorised in writing by the above company. This drawing must be returned with quotation and/or on completion of job as applicable.</small>		Drawn	Date
			Checked	Date
			Approved	Date
	TECHNICAL PRODUCTS DEVELOPMENT AUSTRALIA EXOTEC® FACADE PANEL AND FIXING SYSTEM PARKLANDS DEVELOPMENT GOLD COAST QLD WINDOW JAMB SECTION		Sheet Size A4	Scale NTS
			Drawing Number	
 Drawn to AS 1100 Dimensions in Millimetres Do Not Scale			Revision A	



Material
EXOTEC® FACADE PANEL



Drawn to AS 1100
Dimensions in Millimetres
Do Not Scale

James Hardie Building Products
James Hardie Australia Pty Limited - ABN 12 084 635 558
This drawing is confidential. This drawing is the property of the above company and must not be used, disclosed or reproduced in any form what so ever except as authorised in writing by the above company. This drawing must be returned with quotation and/or on completion of job as applicable.

TECHNICAL PRODUCTS DEVELOPMENT AUSTRALIA

EXOTEC® FACADE PANEL AND FIXING SYSTEM

PARKLANDS DEVELOPMENT

GOLD COAST QLD

WINDOW JAMB SECTION

Drawn	Date
Checked	Date
Approved	Date
Sheet Size A4	Scale NTS
Drawing Number	
Revision A	

1

2

3

4

A

A

B

B

C

C

D

D

E

E

Allow for structural movement
in the vapour permeable membrane
across joint

Vapour permeable membrane

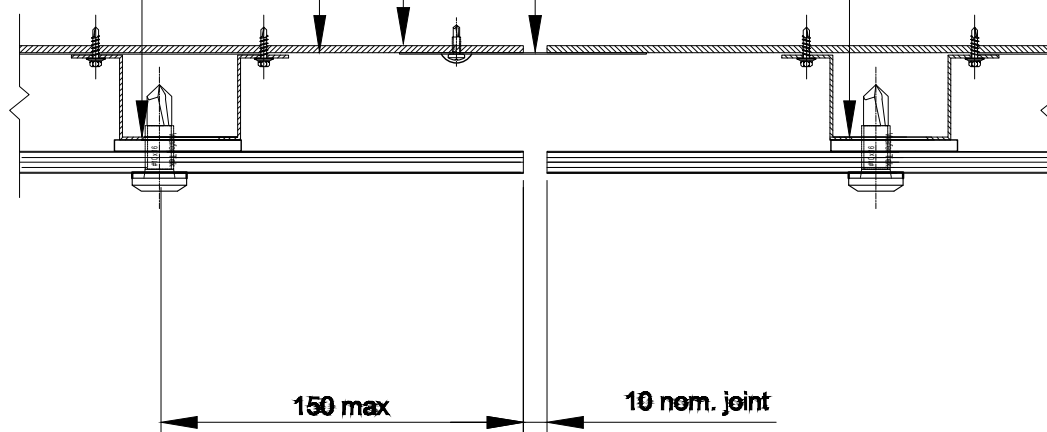
Intermediate
JH top hat

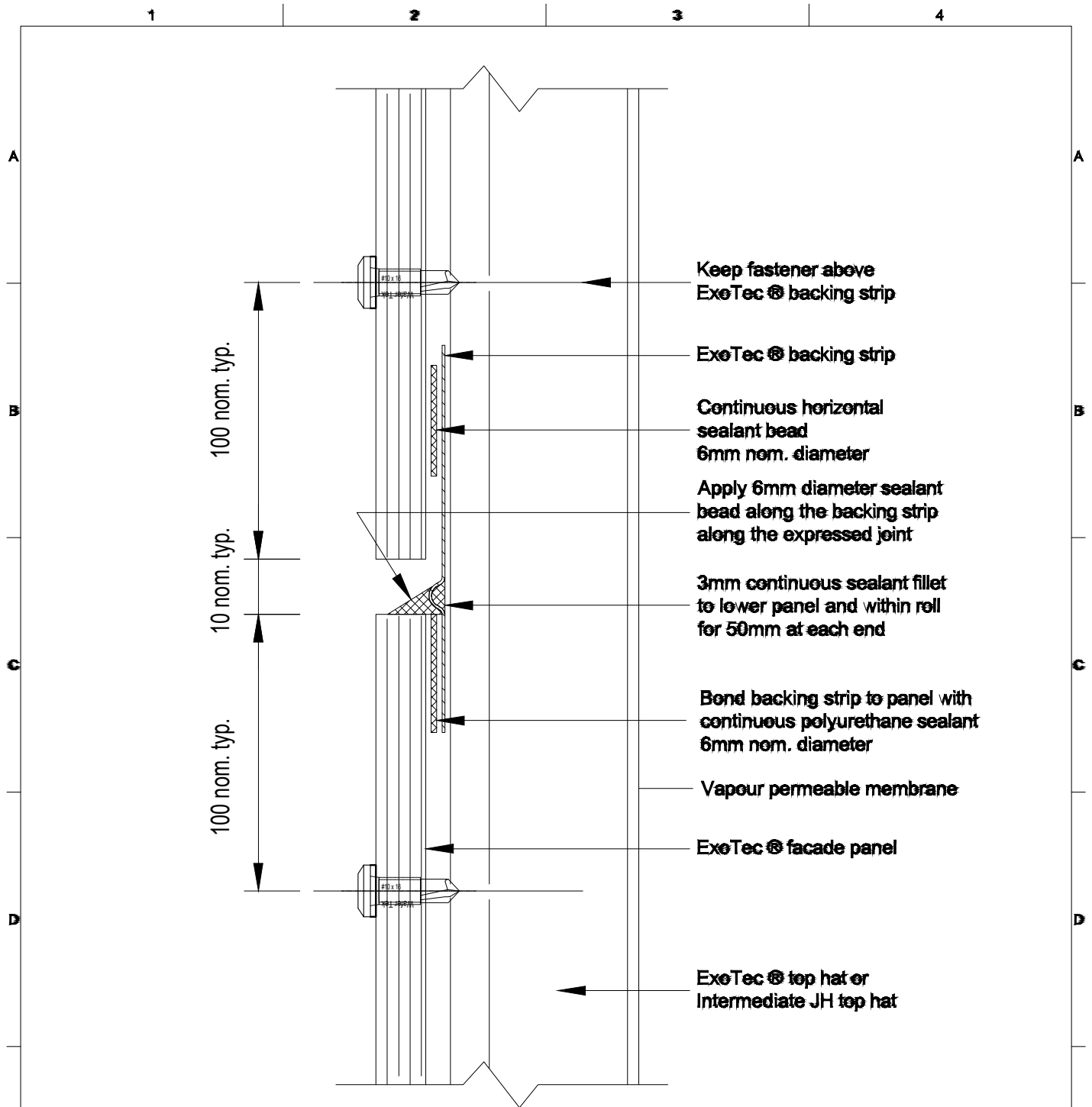
Structural joint in structure
as required by engineer

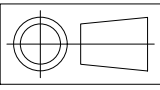
Intermediate
JH top hat

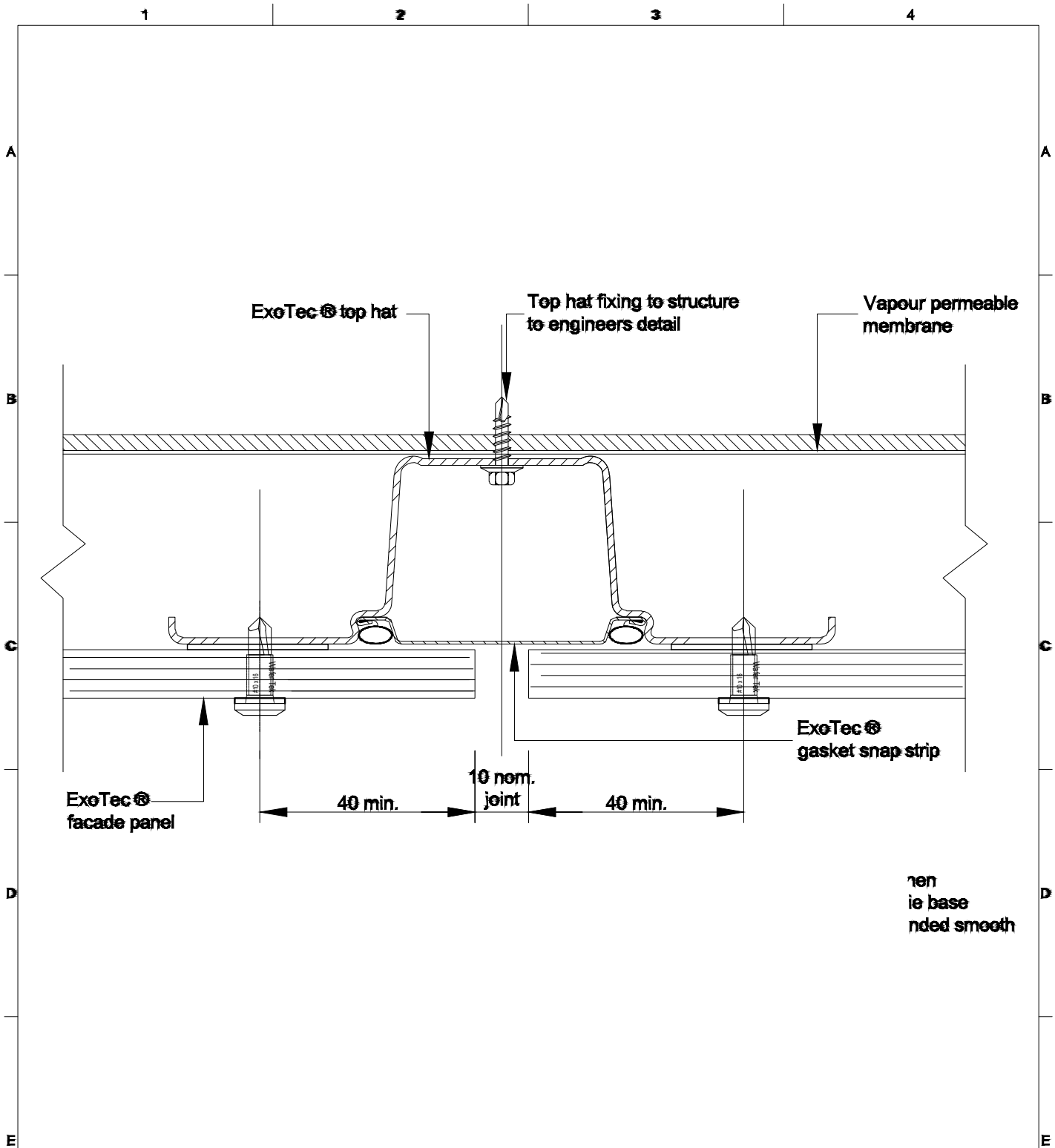
150 max

10 nom. joint

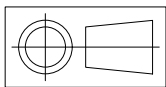




Material	James Hardie Building Products James Hardie Australia Pty Limited - ABN 12 084 635 558 <small>This drawing is confidential. This drawing is the property of the above company and must not be used, disclosed or reproduced in any form what so ever except as authorised in writing by the above company. This drawing must be returned with quotation and/or on completion of job as applicable.</small>	Drawn	Date
			Date
		Checked	Date
		Approved	Date
		Sheet Size A4	Scale NTS
 Drawn to AS 1100 Dimensions in Millimetres Do Not Scale	TECHNICAL PRODUCTS DEVELOPMENT AUSTRALIA EXOTEC® FACADE PANEL AND FIXING SYSTEM PARKLANDS DEVELOPMENT GOLD COAST QLD WINDOW JAMB SECTION	Drawing Number	
		Revision A	



Material
EXOTEC® FACADE PANEL



Drawn to AS 1100
Dimensions in Millimetres
Do Not Scale

**James Hardie
Building Products**

James Hardie Australia Pty Limited - ABN 12 084 635 558
This drawing is confidential. This drawing is the property of the above company and must not be used, disclosed or reproduced in any form what so ever except as authorised in writing by the above company. This drawing must be returned with quotation and/or on completion of job as applicable.

**TECHNICAL PRODUCTS DEVELOPMENT
AUSTRALIA**

**EXOTEC® FACADE PANEL AND FIXING SYSTEM
PARKLANDS DEVELOPMENT
GOLD COAST QLD
WINDOW JAMB SECTION**

Drawn	Date
Checked	Date
Approved	Date
Sheet Size A4	Scale NTS
Drawing Number	
Revision A	

1

2

3

4

A

A

B

B

C

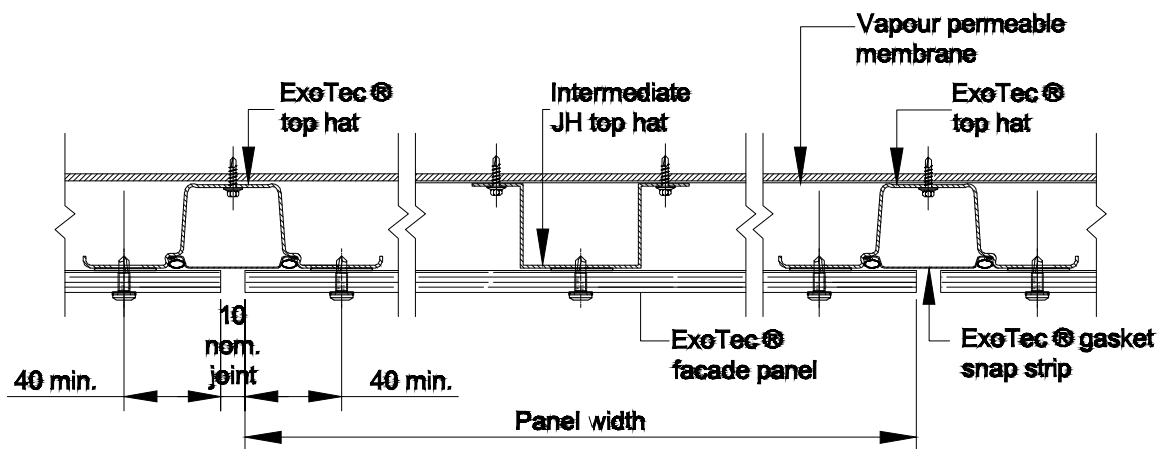
C

D

D

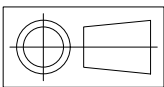
E

E



Material

EXOTEC® FACADE PANEL



Drawn to AS 1100

Dimensions in Millimetres

Do Not Scale

James Hardie
Building Products

James Hardie Australia Pty Limited - ABN 12 084 635 558
This drawing is confidential. This drawing is the property of the above company and must not be used, disclosed or reproduced in any form what so ever except as authorised in writing by the above company. This drawing must be returned with quotation and/or on completion of job as applicable.

TECHNICAL PRODUCTS DEVELOPMENT
AUSTRALIA

EXOTEC® FACADE PANEL AND FIXING SYSTEM

PARKLANDS DEVELOPMENT

GOLD COAST QLD

WINDOW JAMB SECTION

Drawn

Date

Checked

Date

Approved

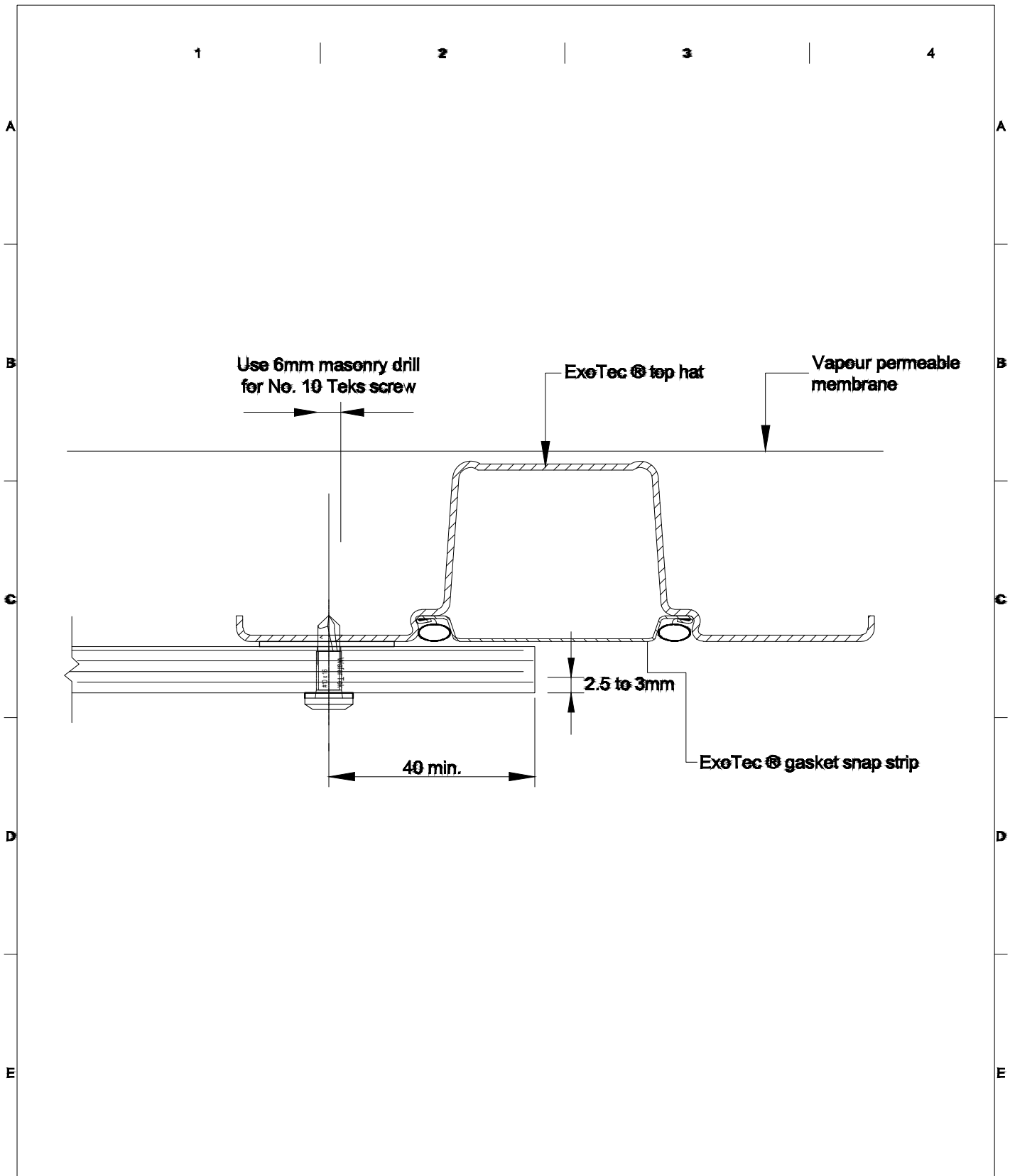
Date

Sheet Size
A4

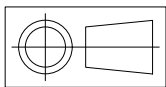
Scale
NTS

Drawing Number

Revision
A



Material
EXOTEC® FACADE PANEL



Drawn to AS 1100
Dimensions in Millimetres
Do Not Scale

**James Hardie
Building Products**

James Hardie Australia Pty Limited - ABN 12 084 635 558
This drawing is confidential. This drawing is the property of the above company and must not be used, disclosed or reproduced in any form what so ever except as authorised in writing by the above company. This drawing must be returned with quotation and/or on completion of job as applicable.

**TECHNICAL PRODUCTS DEVELOPMENT
AUSTRALIA**

**EXOTEC® FACADE PANEL AND FIXING SYSTEM
PARKLANDS DEVELOPMENT
GOLD COAST QLD
WINDOW JAMB SECTION**

Drawn	Date
Checked	Date
Approved	Date
Sheet Size A4	Scale NTS
Drawing Number	
Revision A	