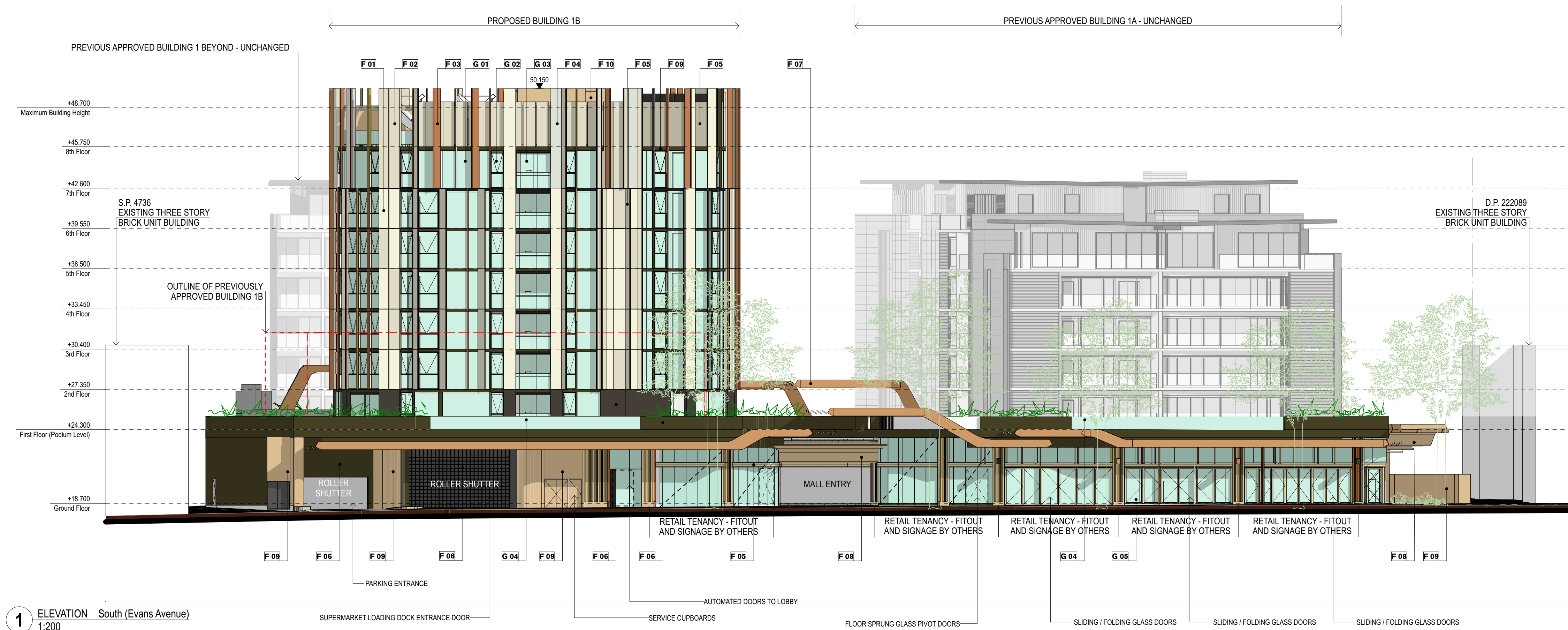


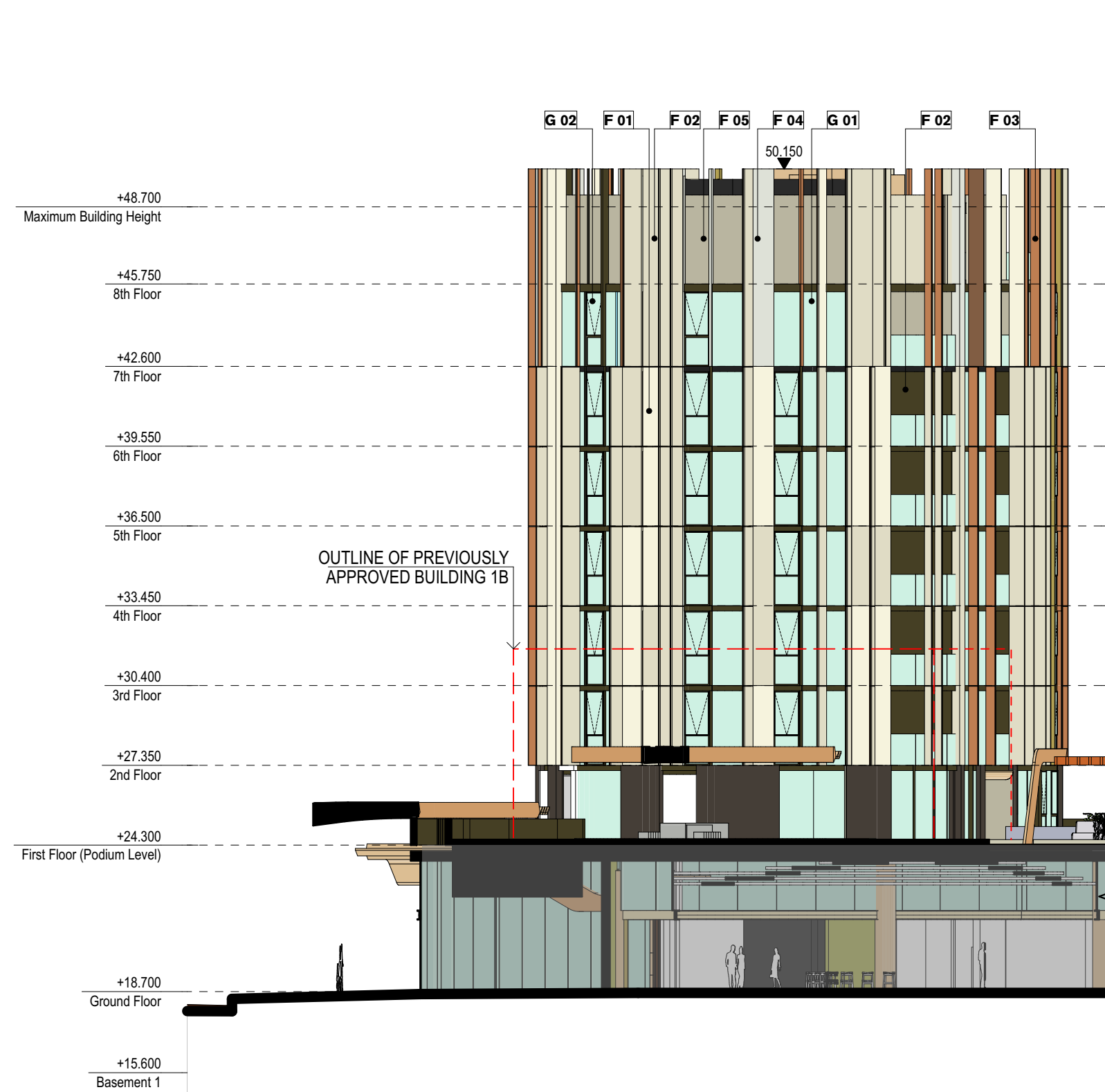
- GENERAL NOTES**
- ALL DIMENSIONS AND EXISTING CONDITIONS SHALL BE CHECKED AND VERIFIED BY THE CONTRACTOR BEFORE PROCEEDING WITH THE WORK
  - ALL LEVELS RELATIVE TO 'AUSTRALIAN HEIGHT DATUM'
  - DO NOT SCALE DRAWINGS
  - USE FIGURED DIMENSIONS ONLY

Legend

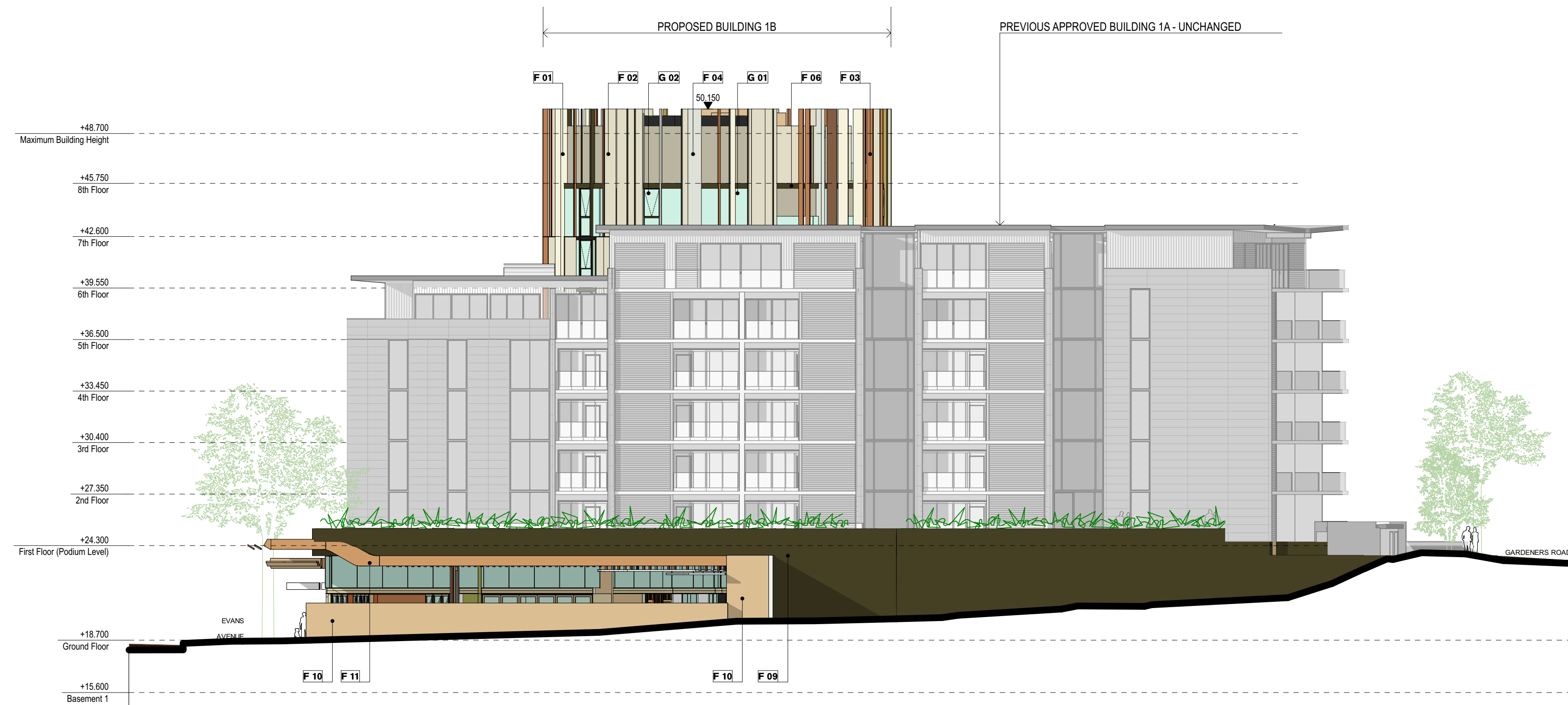
- G01 Fixed Glass
- G02 Top Hung Awning Window
- G03 Glass Sliding Door
- G04 Glass Balustrade
- F01 Light Bronze 1
- F02 Light Bronze 2
- F03 Terracotta / Copper Colour
- F04 Silver
- F05 Mid Bronze
- F06 Grey
- F07 Ochre colour
- F08 Timber cladding or equivalent look
- F09 Batten Tile



1 ELEVATION South (Evans Avenue)  
1:200



3 ELEVATION East (Building 1B)  
1:200



2 ELEVATION East (Full)  
1:200

03	14/7/17	Outline of Previously Approved Buildings Added	HK
02	08/6/17	STW submission	CR
01	23/6/17	STW submission	CR
D	19/6/17	Issue for Final Checking	HK
C	16/6/17	Final Check prior to STW submission	HK
B	9/6/17	Preliminary Issue	HK
A	30/5/17	Preliminary Issue	HK

rev date name by chk

client

Level 29, 1 Market Street  
Sydney 2000

CrownGroup

fjmt studio architecture interiors landscape urban  
sydney melbourne oxford  
Level 5, 70 King Street & +61 2 9251 7077 w fjmtstudio.com

fjmt

project  
**EASTLAKES TOWN CENTRE - NORTH SITE**  
Evans Avenue Eastlakes  
SYDNEY NSW 2018

title  
**SECTION 75W APPLICATION Elevations**

scale 1:200 @ A1 first issued 02/05/2017

project code sheet no. revision

CGE-NS S75W 130007 03

For Approval