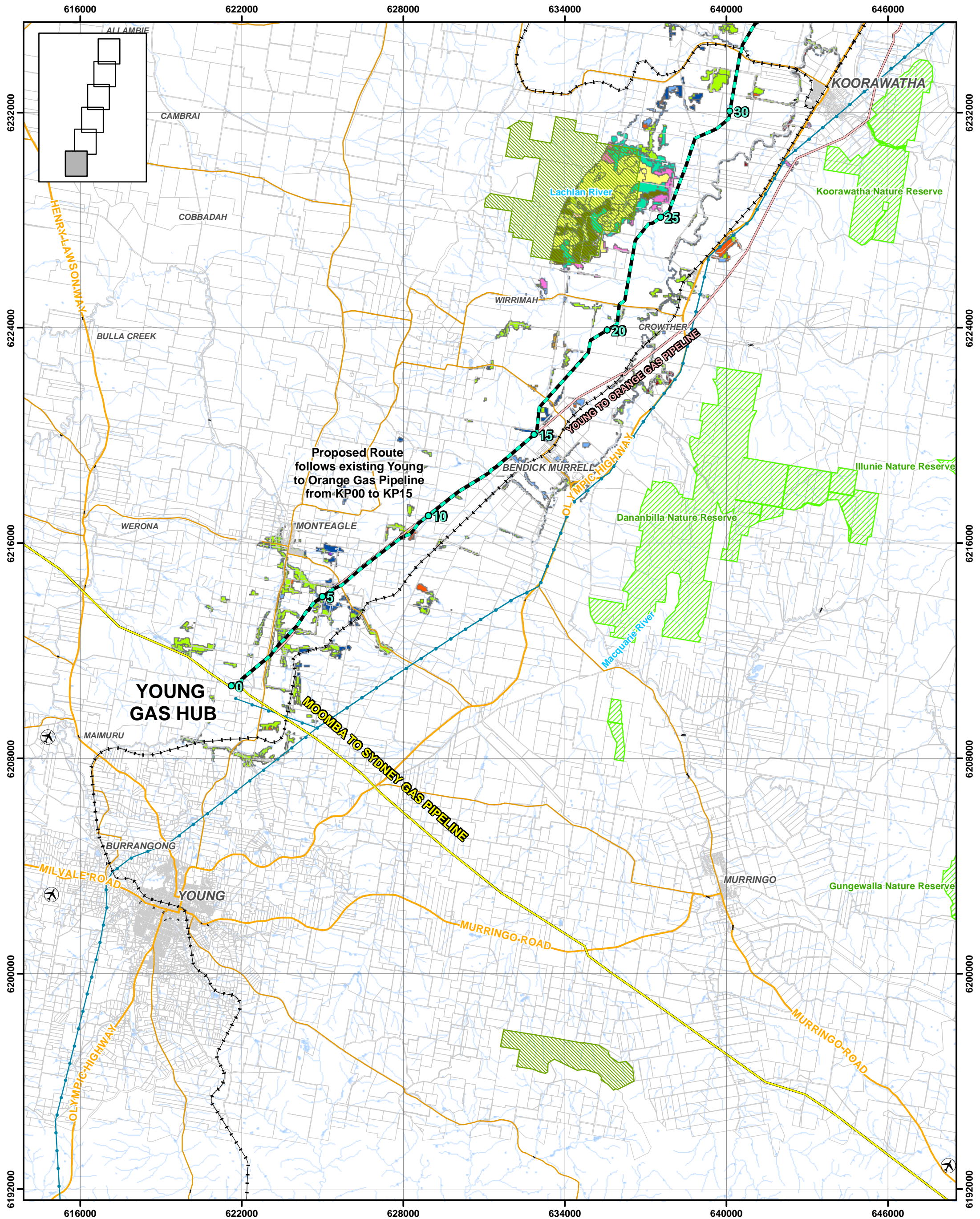


## Appendix M – Vegetation Maps



- |                                       |            |             |                   |               |                   |              |              |             |
|---------------------------------------|------------|-------------|-------------------|---------------|-------------------|--------------|--------------|-------------|
| Proposed Pipeline Route (Rev5a Oct09) | 5km Marker | Watercourse | <b>Powerlines</b> | 132kV         | 22kV              | <b>Roads</b> | Railways     | NPWS Estate |
| 500kV                                 | 66kV       | 330kV       | 33kV              | Arterial Road | Sub-Arterial Road | Airstrips    | State Forest |             |

**Proposed Indicative Route  
Young to Wellington Gas Pipeline**

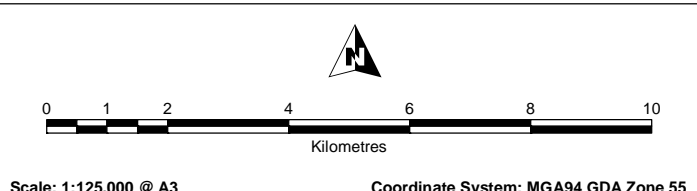
Cadastral: Department of Lands 2006 - 2009  
Proposed Pipeline Route: LandPartners 2009  
Extant Vegetation: Department of Environment & Climate Change 2008  
Vegetation Mapped by LandPartners: LandPartners Field Survey September 2009  
National Parks: NSW NPWS 2009

State Forests: Department of Primary Industries 2008  
Airstrips: Department of Lands 2006 - 2009  
Powerlines: Department of Lands 2006 - 2009  
Roads: Department of Lands 2006 - 2009  
Railways: Department of Lands 2006 - 2009

This plan was prepared for the purpose and exclusive use of ERM POWER and is not to be used for any other purpose. This plan is conceptual, and is not a detail design.

This map is not guaranteed to be free from error or omission. LandPartners Limited disclaim liability for any act done or omission made on the basis of the information in this map, and any consequences of such acts or omissions.

**VEGETATION**



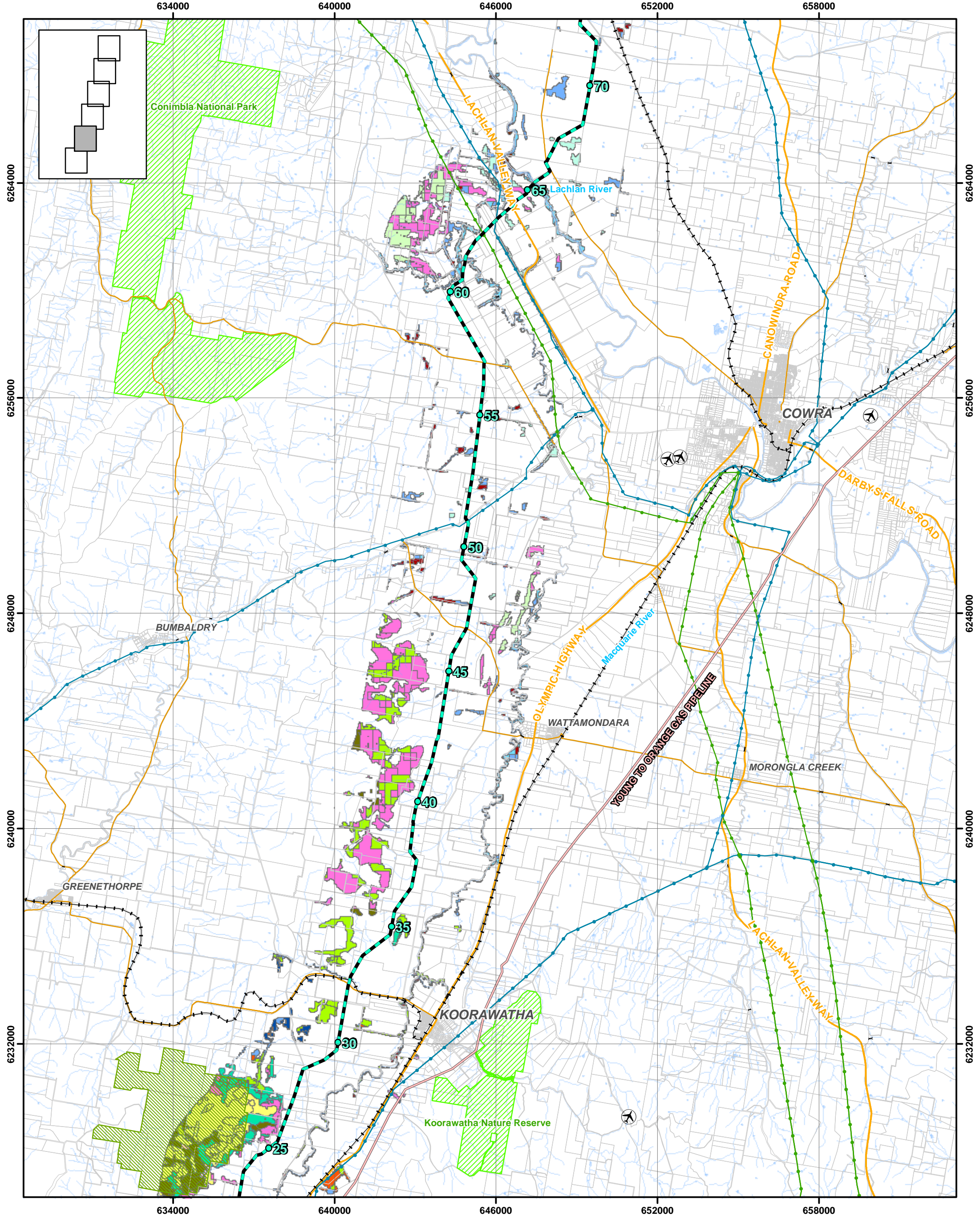
**Sheet 1 of 7**

Level 3, 99 Melbourne Street  
South Brisbane QLD 4101  
PO Box 3916 South Brisbane QLD 4101

Client: ERM Power  
Drawn by: AV  
Approved by: RK  
Date: 16-10-2009  
Plan: BRK4317-02-023b

T: 61 7 3842 1000  
F: 61 7 3842 1001  
E: brisbane@landpartners.com.au  
W: www.landpartners.com.au





- |                                       |            |             |                   |       |      |                   |           |              |
|---------------------------------------|------------|-------------|-------------------|-------|------|-------------------|-----------|--------------|
| Proposed Pipeline Route (Rev5a Oct09) | 5km Marker | Watercourse | <b>Powerlines</b> | 132kV | 22kV | <b>Roads</b>      | Railways  | NPWS Estate  |
|                                       |            |             | 500kV             | 66kV  |      | Arterial Road     | Airstrips | State Forest |
|                                       |            |             | 330kV             | 33kV  |      | Sub-Arterial Road |           |              |

**Proposed Indicative Route  
Young to Wellington Gas Pipeline**

**VEGETATION**

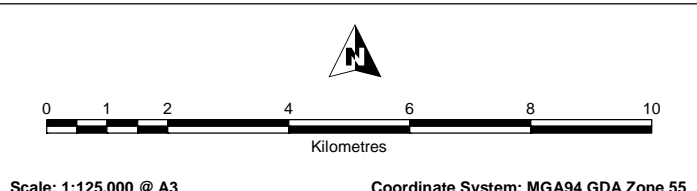
**Sheet 2 of 7**

Cadastral: Department of Lands 2006 - 2009  
Proposed Pipeline Route: LandPartners 2009  
Extant Vegetation: Department of Environment & Climate Change 2008  
Vegetation Mapped by LandPartners: LandPartners Field Survey September 2009  
National Parks: NSW NPWS 2009

State Forests: Department of Primary Industries 2008  
Airstrips: Department of Lands 2006 - 2009  
Powerlines: Department of Lands 2006 - 2009  
Roads: Department of Lands 2006 - 2009  
Railways: Department of Lands 2006 - 2009

This plan was prepared for the purpose and exclusive use of ERM POWER and is not to be used for any other purpose. This plan is conceptual, and is not a detail design.

This map is not guaranteed to be free from error or omission. LandPartners Limited disclaim liability for any act done or omission made on the basis of the information in this map, and any consequences of such acts or omissions.

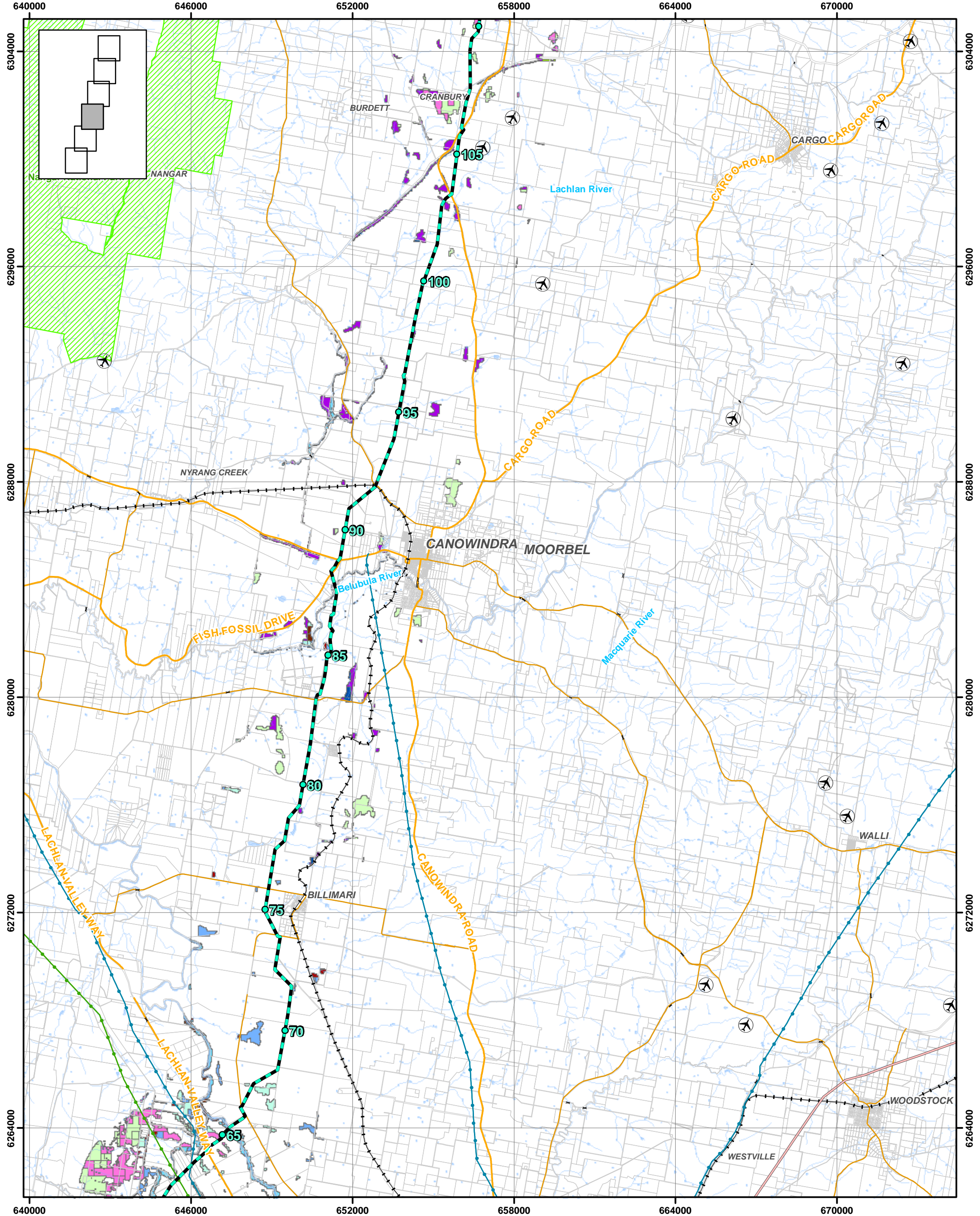


Level 3, 99 Melbourne Street  
South Brisbane QLD 4101  
PO Box 3916 South Brisbane QLD 4101

Client: ERM Power  
Drawn by: AV  
Approved by: RK  
Date: 16-10-2009  
Plan: BRK4317-02-023b

T: 61 7 3842 1000  
F: 61 7 3842 1001  
E: brisbane@landpartners.com.au  
W: www.landpartners.com.au





- |                                       |            |             |                   |                   |      |      |              |          |           |             |              |
|---------------------------------------|------------|-------------|-------------------|-------------------|------|------|--------------|----------|-----------|-------------|--------------|
| Proposed Pipeline Route (Rev5a Oct09) | 5km Marker | Watercourse | <b>Powerlines</b> | 132kV             | 66kV | 22kV | <b>Roads</b> | Railways | Airstrips | NPWS Estate | State Forest |
| 500kV                                 | 330kV      | 33kV        | Arterial Road     | Sub-Arterial Road |      |      |              |          |           |             |              |

**Proposed Indicative Route  
Young to Wellington Gas Pipeline**

**VEGETATION**

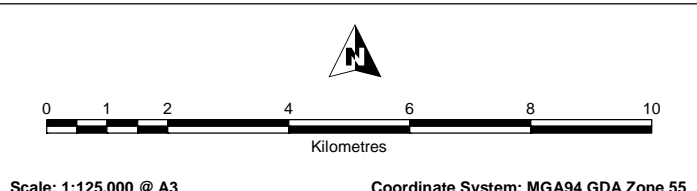
**Sheet 3 of 7**

Cadastral: Department of Lands 2006 - 2009  
Proposed Pipeline Route: LandPartners 2009  
Existant Vegetation: Department of Environment & Climate Change 2008  
Vegetation Mapped by LandPartners: LandPartners Field Survey September 2009  
National Parks: NSW NPWS 2009

State Forests: Department of Primary Industries 2008  
Airstrips: Department of Lands 2006 - 2009  
Powerlines: Department of Lands 2006 - 2009  
Roads: Department of Lands 2006 - 2009  
Railways: Department of Lands 2006 - 2009

This plan was prepared for the purpose and exclusive use of ERM POWER and is not to be used for any other purpose. This plan is conceptual, and is not a detail design.

This map is not guaranteed to be free from error or omission. LandPartners Limited disclaim liability for any act done or omission made on the basis of the information in this map, and any consequences of such acts or omissions.

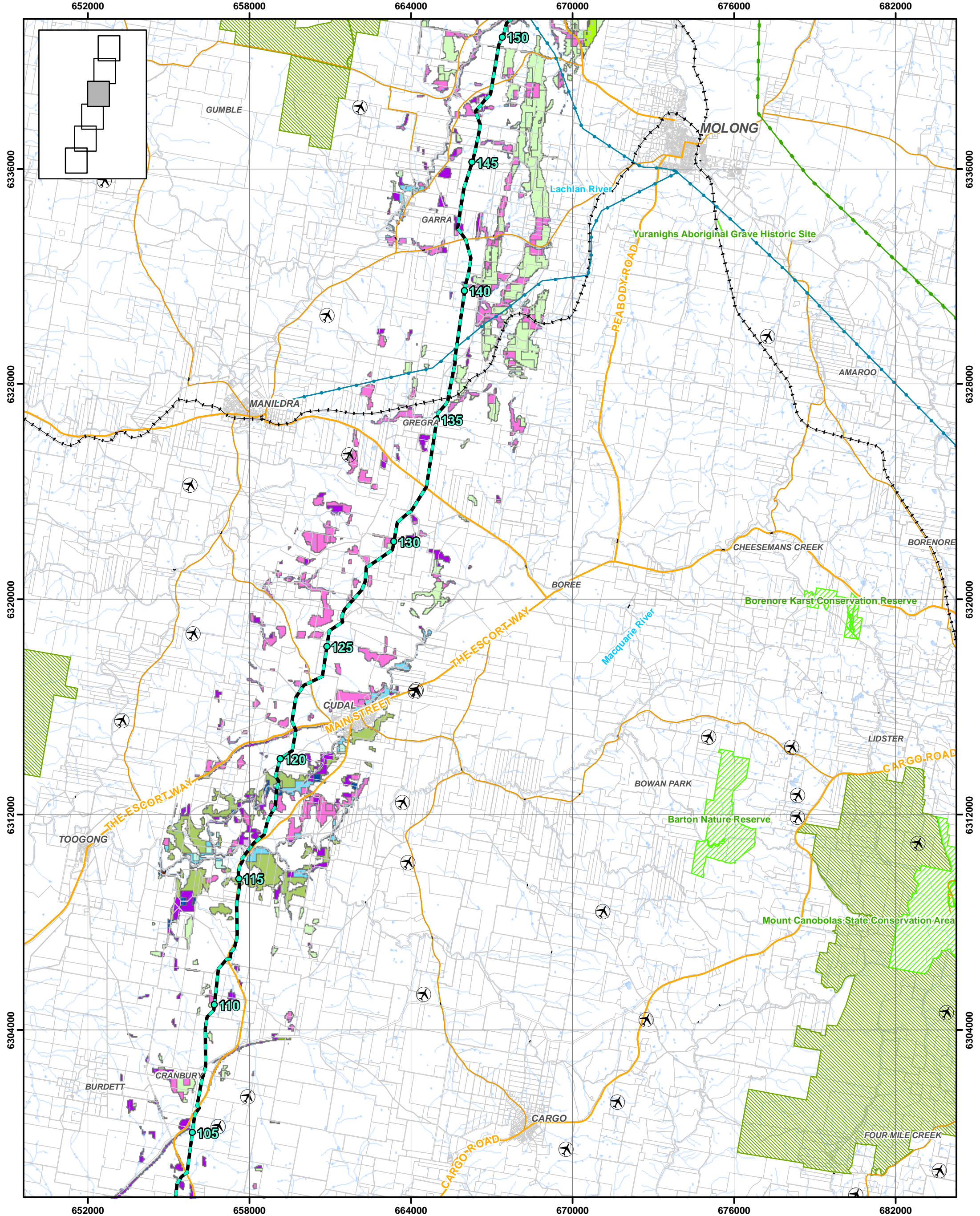


Level 3, 99 Melbourne Street  
South Brisbane QLD 4101  
PO Box 3916 South Brisbane QLD 4101

Client: ERM Power  
Drawn by: AV  
Approved by: RK  
Date: 16-10-2009  
Plan: BRRK4317-02-023b

T: 61 7 3842 1000  
F: 61 7 3842 1001  
E: brisbane@landpartners.com.au  
W: www.landpartners.com.au





- |                                       |            |             |                   |               |                   |              |              |             |
|---------------------------------------|------------|-------------|-------------------|---------------|-------------------|--------------|--------------|-------------|
| Proposed Pipeline Route (Rev5a Oct09) | 5km Marker | Watercourse | <b>Powerlines</b> | 132kV         | 22kV              | <b>Roads</b> | Railways     | NPWS Estate |
| 500kV                                 | 66kV       | 330kV       | 33kV              | Arterial Road | Sub-Arterial Road | Airstrips    | State Forest |             |

**Proposed Indicative Route  
Young to Wellington Gas Pipeline**

**VEGETATION**

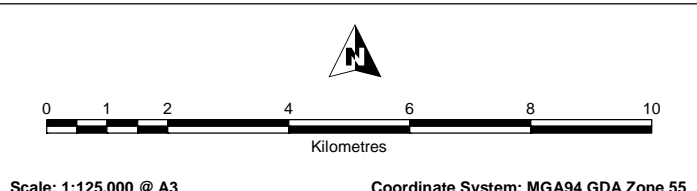
**Sheet 4 of 7**

Cadastral: Department of Lands 2006 - 2009  
Proposed Pipeline Route: LandPartners 2009  
Extant Vegetation: Department of Environment & Climate Change 2008  
Vegetation Mapped by LandPartners: LandPartners Field Survey September 2009  
National Parks: NSW NPWS 2009

State Forests: Department of Primary Industries 2008  
Airstrips: Department of Lands 2006 - 2009  
Powerlines: Department of Lands 2006 - 2009  
Roads: Department of Lands 2006 - 2009  
Railways: Department of Lands 2006 - 2009

This plan was prepared for the purpose and exclusive use of ERM POWER and is not to be used for any other purpose. This plan is conceptual, and is not a detail design.

This map is not guaranteed to be free from error or omission. LandPartners Limited disclaim liability for any act done or omission made on the basis of the information in this map, and any consequences of such acts or omissions.

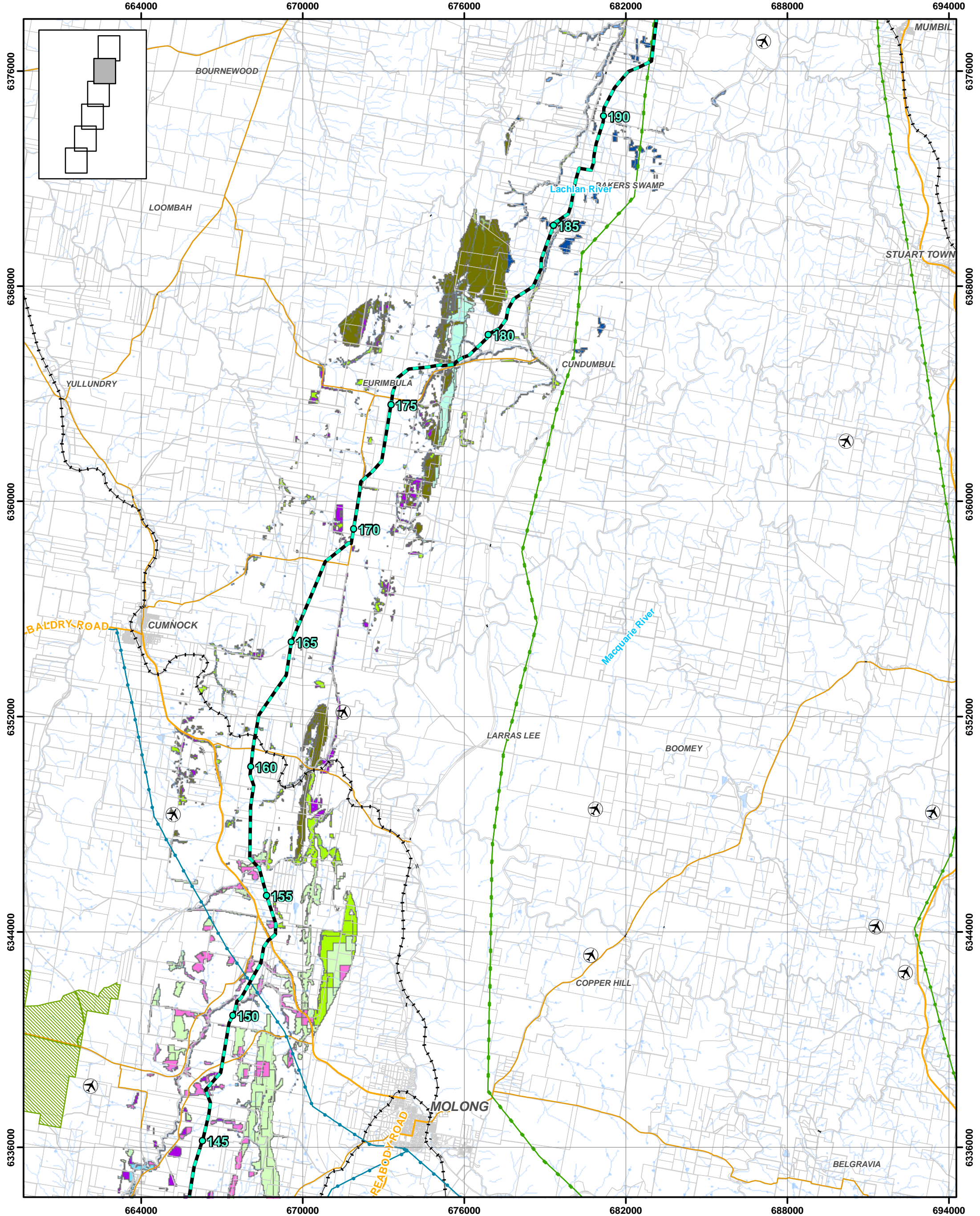


Level 3, 99 Melbourne Street  
South Brisbane QLD 4101  
PO Box 3916 South Brisbane QLD 4101

Client: ERM Power  
Drawn by: AV  
Approved by: RK  
Date: 16-10-2009  
Plan: BRRK4317-02-023b

T: 61 7 3842 1000  
F: 61 7 3842 1001  
E: brisbane@landpartners.com.au  
W: www.landpartners.com.au





- Proposed Pipeline Route (Rev5a Oct09)

5km Marker

Watercourse

Powerlines

500kV

330kV

66kV

33kV

132kV

22kV

Roads

Arterial Road

Sub-Arterial Road

Railways

Airstrips

NPWS Estate

State Forest

Proposed Indicative Route  
Young to Wellington Gas Pipeline

VEGETATION

Sheet 5 of 7

Cadastral: Department of Lands 2006 - 2009

Proposed Pipeline Route: LandPartners 2009

Extant Vegetation: Department of Environment & Climate Change 2008

Vegetation Mapped by LandPartners: LandPartners Field Survey September 2009

National Parks: NSW NPWS 2009

State Forests: Department of Primary Industries 2008

Airfields: Department of Lands 2006 - 2009

Powerlines: Department of Lands 2006 - 2009

Roads: Department of Lands 2006 - 2009

Railways: Department of Lands 2006 - 2009

0 1 2 4 6 8 10

Kilometres

Scale: 1:125,000 @ A3

Coordinate System: MGA94 GDA Zone 55

ERM

Lead for generation

LANDPARTNERS

built environment consultants

Level 3, 99 Melbourne Street

South Brisbane QLD 4101

PO Box 3916 South Brisbane QLD 4101

T: 61 7 3842 1000

F: 61 7 3842 1001

E: [brisbane@landpartners.com.au](mailto:brisbane@landpartners.com.au)

W: [www.landpartners.com.au](http://www.landpartners.com.au)

Client: ERM Power

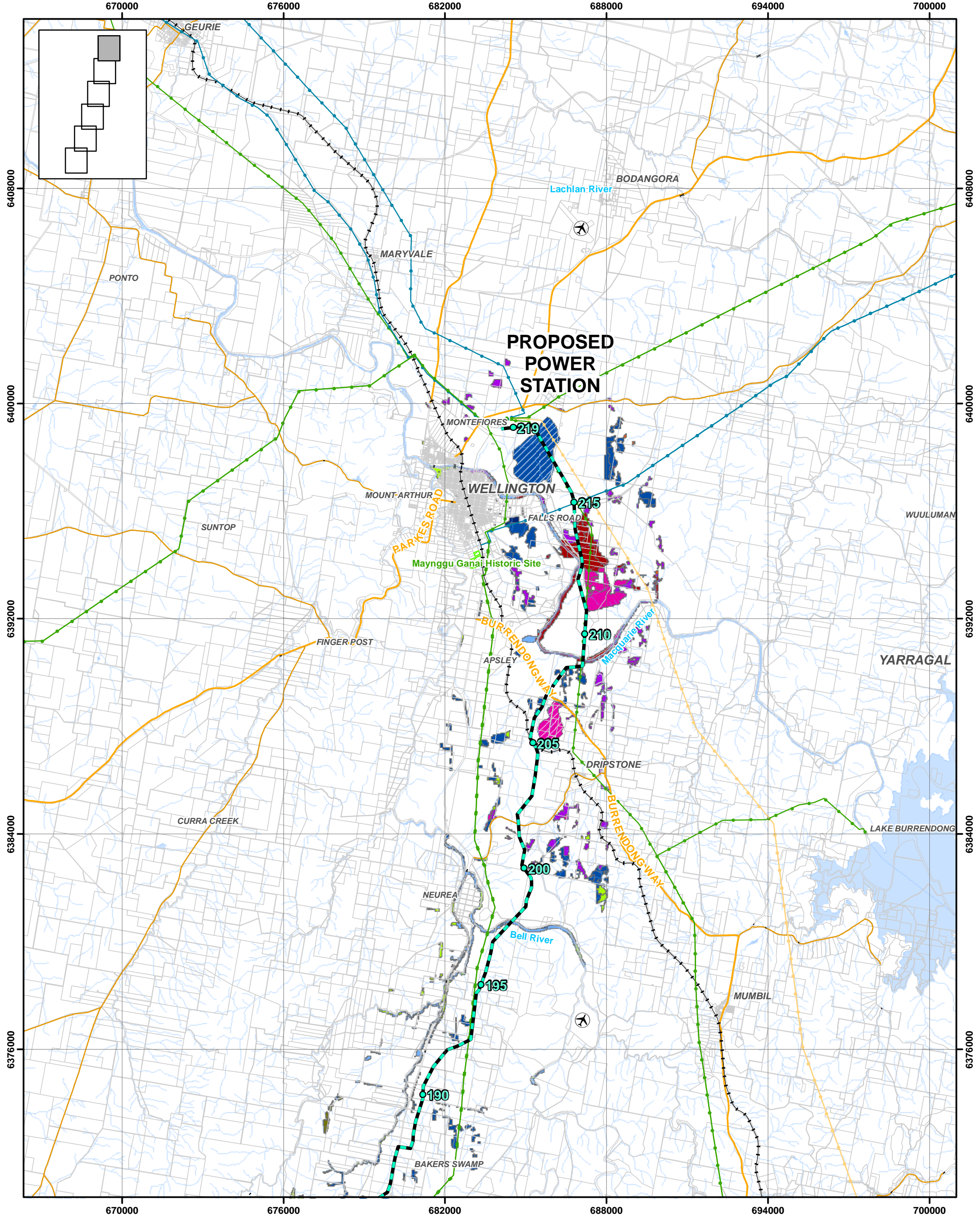
Drawn by: AV

Approved by: RK

Date: 16-10-2009

Plan: BRRK4317-02-023b





- |                                       |            |             |                   |       |      |      |              |               |                   |          |           |             |              |
|---------------------------------------|------------|-------------|-------------------|-------|------|------|--------------|---------------|-------------------|----------|-----------|-------------|--------------|
| Proposed Pipeline Route (Rev5a Oct09) | 5km Marker | Watercourse | <b>Powerlines</b> | 132kV | 66kV | 22kV | <b>Roads</b> | Arterial Road | Sub-Arterial Road | Railways | Airstrips | NPWS Estate | State Forest |
|                                       |            |             | 500kV             | 330kV | 33kV |      |              |               |                   |          |           |             |              |

**Proposed Indicative Route  
Young to Wellington Gas Pipeline**

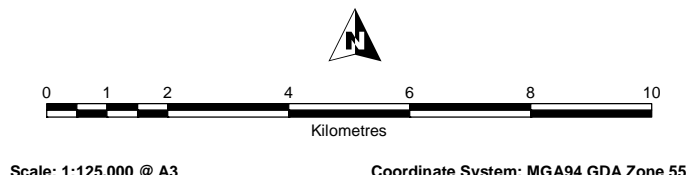
Cadastral: Department of Lands 2006 - 2009  
Proposed Pipeline Route: LandPartners 2009  
Extant Vegetation: Department of Environment & Climate Change 2008  
Vegetation Mapped by LandPartners: LandPartners Field Survey September 2009  
National Parks: NSW NPWS 2009

State Forests: Department of Primary Industries 2008  
Airstrips: Department of Lands 2006 - 2009  
Powerlines: Department of Lands 2006 - 2009  
Roads: Department of Lands 2006 - 2009  
Railways: Department of Lands 2006 - 2009

This plan was prepared for the purpose and exclusive use of ERM POWER and is not to be used for any other purpose. This plan is conceptual, and is not a detail design.

This map is not guaranteed to be free from error or omission. LandPartners Limited disclaim liability for any act done or omission made on the basis of the information in this map, and any consequences of such acts or omissions.

**VEGETATION**



**Sheet 6 of 7**

Level 3, 99 Melbourne Street  
South Brisbane QLD 4101  
PO Box 3916 South Brisbane QLD 4101

61 7 3842 1000  
61 7 3842 1001  
brisbane@landpartners.com.au  
www.landpartners.com.au

Client: ERM Power  
Drawn by: AV  
Approved by: RK  
Date: 16-10-2009  
Plan: BRRK4317-02-023b

T:  
F:  
E:  
W:



Legend

- (BVT 5) Red Stringybark (+/- Brittle Gum) open-forest
- (BVT 6) Scribbly Gum woodland
- (BVT 8) Dry open-forest on ranges of the lower slopes (Hervey Ranges)
- (BVT 12) Red Stringybark and/or Ironbark open-forest
- (BVT 13) Mugga Ironbark - Box - White Cypress Pine woodland
- (BVT 14) Mugga Ironbark Woodland on hills
- (BVT 15) Pine Woodland
- (BVT 17) Blakely's Red Gum - Rough Barked Apple woodland on flats and alluvial terraces
- (BVT 18) Mixed Box - Red Gum - Rough Barked Apple woodlands of the slopes
- (BVT 29) River Oak riparian woodland/forest of the slopes and tablelands
- (BVT 30) River Red Gum riparian woodland/forest on floodplains
- (BVT 32) River Red Gum - Black Box woodland/forest on floodplains
- (BVT 42) Tumbledown Red Gum - Black Cypress Pine - Red Box low woodland on hills
- (BVT 45) Red Stringybark - Blakely's Red Gum - Yellow Box woodland
- (BVT 46) Blakely's Red Gum - Yellow Box open-woodland of the tablelands
- (BVT 49) Dry woodland on rocky hills
- (BVT 50) Tumbledown Red Gum - Belah - White Cypress Pine low woodland
- (BVT 59) Floodplain Complex (Central Lachlan )
- (BVT 70) Yellow Box woodland on flats and alluvial terraces of the slopes
- (BVT 74) Inland Grey Box woodland
- (BVT 77) White Box - White Cypress Pine woodland
- (BVT 78) White Box - Kurrajong woodland
- (BVT 1002) Towns

Mapped by LandPartners

- (BVT 15) Pine Woodland
- (BVT 78) White Box - Kurrajong woodland