

REFERENCES

DRAWINGS TO BE READ IN CONJUNCTION WITH BUT NOT LIMITED TO ALL STRUCTURAL ENGINEERS, STORMWATER ENGINEERS, LANDSCAPE ARCHITECTS, AND OTHER ASSOCIATED PLANS & REPORTS

REFER TO THE BASIX REPORT FOR ADDITIONAL REQUIREMENTS TO THE ONES NOTED ON THE DRAWINGS.

NOTES

ALL DIMENSIONS AND SETOUTS ARE TO BE VERIFIED ON SITE AND ALL OMISSIONS OR ANY DISCREPANCIES TO BE NOTIFIED TO THE ARCHITECT.

FIGURED DIMENSIONS TO BE USED AT ALL TIME. DO NOT SCALE MEASUREMENTS OFF DRAWINGS.

PROPOSED AMENDMENTS

AREA ADDED TO GFA

ADDITIONAL S75W AMENDMENTS 26.09.18:

- ENTRY INTO PRIVATE LOBBY AMENDED
- PUBLIC BATHROOM DOOR LOCATION AND INTERNAL LAYOUT MODIFIED

Rev. Date Description

F	27.09.18	General Amendments
E	04.08.17	Additional Information
D	14.07.17	Additional Information
C	04.07.17	Additional Information
B	27.03.17	General Amendments
A	16.02.17	Modification Submission

Scale

0 5 10 15 20

1:500

Project Architect

**CDARCHITECTS**

LEVEL 2, 60 PARK STREET  
SYDNEY NSW 2000  
P: 02 9267 2000  
W: www.cdarchitects.com.au

© Copyright

The copyright of this drawing together with any other documents prepared by charnie design (CD) remains the property of CD. CD grants licence for the use of this document for the purpose for which it is intended. The licence is not transferable without permission from CD.

Project

**PROPOSED MIXED USE DEVELOPMENT**

47-50 THE ESPLANADE ETTALONG BEACH

Drawing Title

**GROUND FLOOR PLAN**

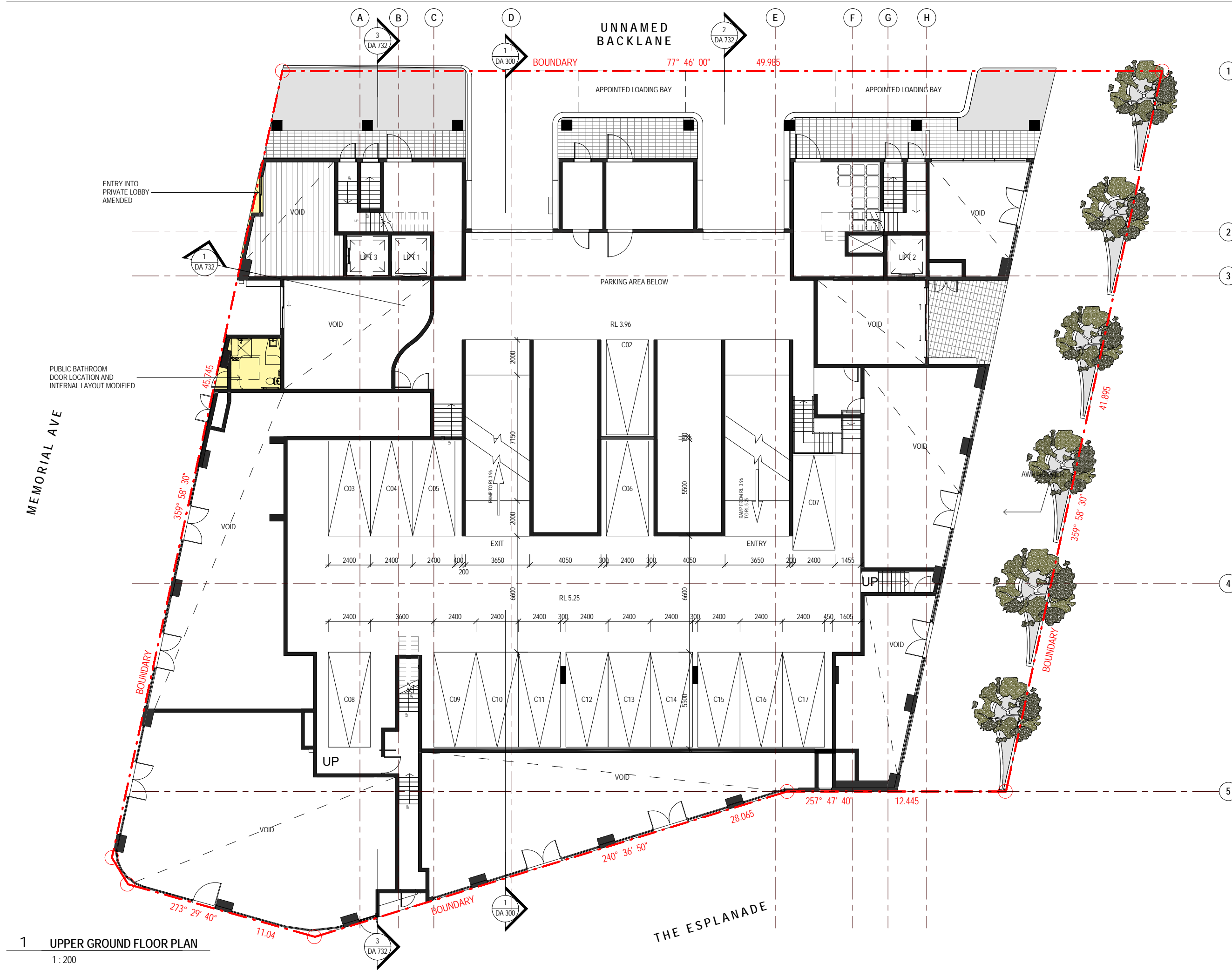
AMENDED SUBMISSION			
Job no.	Drawing no.	Rev.	
J15304S2	DA 101	F	

BICYCLE SCHEDULE For B2 Zone - Large Centres			
UNITS	RATE	REQUIRED	PROPOSED
RESIDENTIAL (59 UNITS)	1 SPACE / 5 UNITS	11.8	12
VISITORS (59 UNITS)	1 SPACE / 10 UNITS	5.9	6
COMMERCIAL (521.8 m <sup>2</sup> )		2	2
TOTAL		19.7	20

CAR PARKING SCHEDULE For B2 Zone - Large Centres			
UNITS	RATE	REQUIRED	PROPOSED
RESIDENTIAL (59 UNITS)			
SHOP TOP UNITS	1 SPACE / 1 UNIT	59	61
VISITORS	NOT REQUIRED	0	0
COMMERCIAL (521.8 m <sup>2</sup> )			
SHOPS	1 SPACE / 30 m <sup>2</sup>	17.39	17
TOTAL		76.39	78

1 GROUND FLOOR PLAN

1:200



REFERENCES

DRAWINGS TO BE READ IN CONJUNCTION WITH BUT NOT LIMITED TO ALL STRUCTURAL ENGINEERS, STORMWATER ENGINEERS, LANDSCAPE ARCHITECTS, AND OTHER ASSOCIATED PLANS & REPORTS

REFER TO THE BASIX REPORT FOR ADDITIONAL REQUIREMENTS TO THE ONES NOTED ON THE DRAWINGS.

NOTES

ALL DIMENSIONS AND SETOUTS ARE TO BE VERIFIED ON SITE AND ALL OMISSIONS OR ANY DISCREPANCIES TO BE NOTIFIED TO THE ARCHITECT.

FIGURED DIMENSIONS TO BE USED AT ALL TIME.

DO NOT SCALE MEASUREMENTS OFF DRAWINGS.



PROPOSED AMENDMENTS

AREA ADDED TO GFA

ADDITIONAL S75W AMENDMENTS 26.09.18:

- ENTRY INTO PRIVATE LOBBY AMENDED
- PUBLIC BATHROOM DOOR LOCATION AND INTERNAL LAYOUT MODIFIED

C	27.09.18	General Amendments
B	27.03.17	General Amendments
A	16.02.17	Modification Submission
Rev.	Date	Description
Scale	0	1:500
m	5	
	10	
	15	
	20	

Project Architect

**CDARCHITECTS**

LEVEL 2, 60 PARK STREET  
SYDNEY NSW 2000  
P: 02 9267 2000  
W: www.cdarchitects.com.au

© Copyright

The copyright of this drawing together with any other documents prepared by charnie design (CD) remains the property of CD. CD grants licence for the use of this document for the purpose for which it is intended. The licence is not transferable without permission from CD.

Project

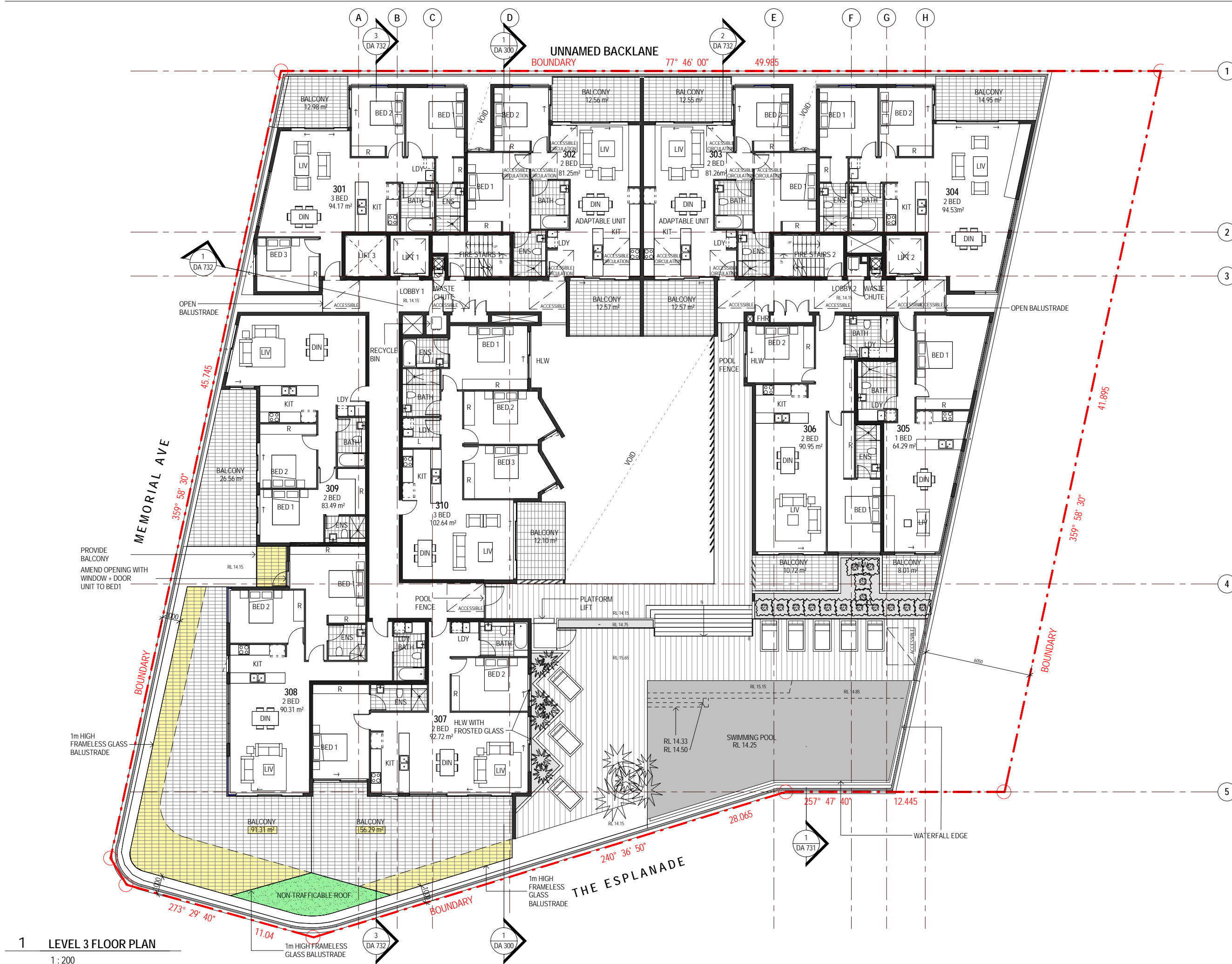
**PROPOSED MIXED USE DEVELOPMENT**

47-50 THE ESPLANADE ETTALONG BEACH

Drawing Title

**UPPER GROUND  
FLOOR PLAN (COMPARISON SHEET)**

AMENDED SUBMISSION		
Job no.	Drawing no.	Rev.
J15304S2	DA 102	C
Drawn by	Checked by	Date
Author	Checker	FEB 2017



REFERENCES

DRAWINGS TO BE READ IN CONJUNCTION WITH BUT NOT LIMITED TO ALL STRUCTURAL ENGINEERS, STORMWATER ENGINEERS, LANDSCAPE ARCHITECTS, AND OTHER ASSOCIATED PLANS & REPORTS

REFER TO THE BASIS REPORT FOR ADDITIONAL REQUIREMENTS TO THE ONES NOTED ON THE DRAWINGS.

NOTES

ALL DIMENSIONS AND SETOUTS ARE TO BE VERIFIED ON SITE AND ALL OMISSIONS OR ANY DISCREPANCIES TO BE NOTIFIED TO THE ARCHITECT.

FIGURED DIMENSIONS TO BE USED AT ALL TIME. DO NOT SCALE MEASUREMENTS OFF DRAWINGS.

- PROPOSED AMENDMENTS
- DIFFERENCE BETWEEN MOD 5 ORIGINAL SUBMISSION TO MOD 5 CURRENT SUBMISSION

- S75W AMENDMENTS 04.12.2018:
- BALCONY TO UNITS 307 & 308 AMENDED AND INCREASED
  - LINE OF FRAMELESS BALUSTRADES TO UNITS 307 & 308 EXTENDED
  - BALCONY TO B1 OF UNIT 308 ADDED
  - OPENING TO B1 OF UNIT 308 AMENDED

F	06.12.18	General Amendments
E	04.12.18	Frameless Balustrades
D	27.09.18	General Amendments
C	04.07.17	Additional Information
B	27.03.17	General Amendments
A	16.02.17	Modification Submission
Rev.	Date	Description
Scale	0 5 10 15 20	
m	1:500	

Project Architect

**CDARCHITECTS**

LEVEL 2, 60 PARK STREET  
SYDNEY NSW 2000  
P: 02 9267 2000  
W: www.cdarchitects.com.au

© Copyright

The copyright of this drawing together with any other documents prepared by charnie design (CD) remains the property of CD. CD grants licence for the use of this document for the purpose for which it is intended. The licence is not transferable without permission from CD.

Project

**PROPOSED MIXED USE DEVELOPMENT**

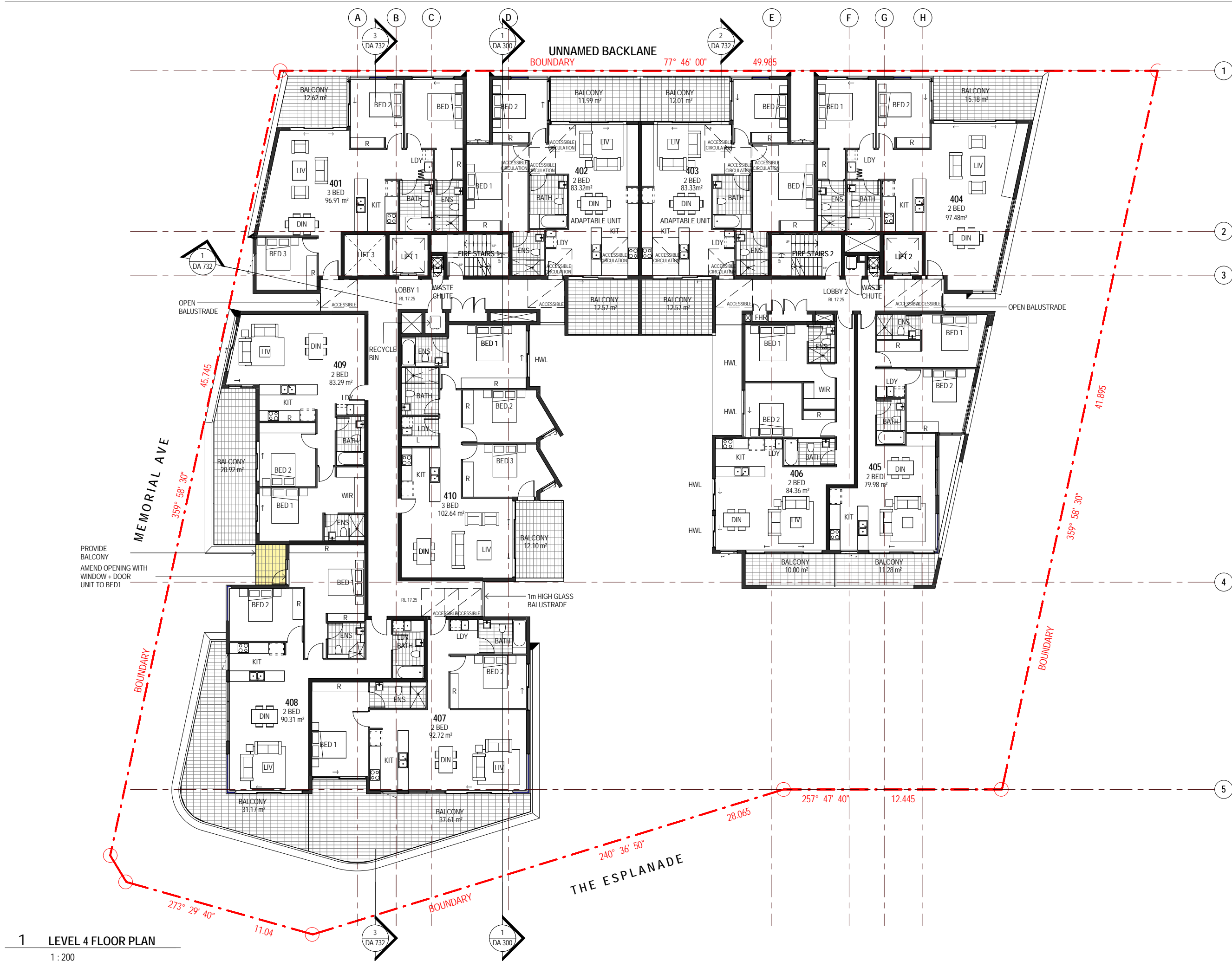
47-50 THE ESPLANADE ETTALONG BEACH

Drawing Title

**LEVEL 03  
FLOOR PLAN**

AMENDED SUBMISSION		
Job no.	Drawing no.	Rev.
J15304S2	DA 105	F
Drawn by	Checked by	Date
Author	Checker	FEB 2017





REFERENCES

DRAWINGS TO BE READ IN CONJUNCTION WITH BUT NOT LIMITED TO ALL STRUCTURAL ENGINEERS, STORMWATER ENGINEERS, LANDSCAPE ARCHITECTS, AND OTHER ASSOCIATED PLANS & REPORTS

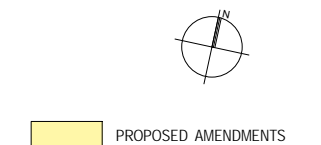
REFER TO THE BASIS REPORT FOR ADDITIONAL REQUIREMENTS TO THE ONES NOTED ON THE DRAWINGS.

NOTES

ALL DIMENSIONS AND SETOUTS ARE TO BE VERIFIED ON SITE AND ALL OMISSIONS OR ANY DISCREPANCIES TO BE NOTIFIED TO THE ARCHITECT.

FIGURED DIMENSIONS TO BE USED AT ALL TIME.

DO NOT SCALE MEASUREMENTS OFF DRAWINGS.



S75W AMENDMENTS 26.09.2018:

- BALCONY TO B1 OF UNIT 408 ADDED
- OPENING TO B1 OF UNIT 408 AMENDED

Rev.	Date	Description
D	27.09.18	General Amendments
C	04.07.17	Additional Information
B	27.03.17	General Amendments
A	16.02.17	Modification Submission

Scale  
m 0 5 10 15 20  
1:500

Project Architect

**CDARCHITECTS**

LEVEL 2, 60 PARK STREET  
SYDNEY NSW 2000  
P: 02 9267 2000  
W: www.cdarchitects.com.au

© Copyright

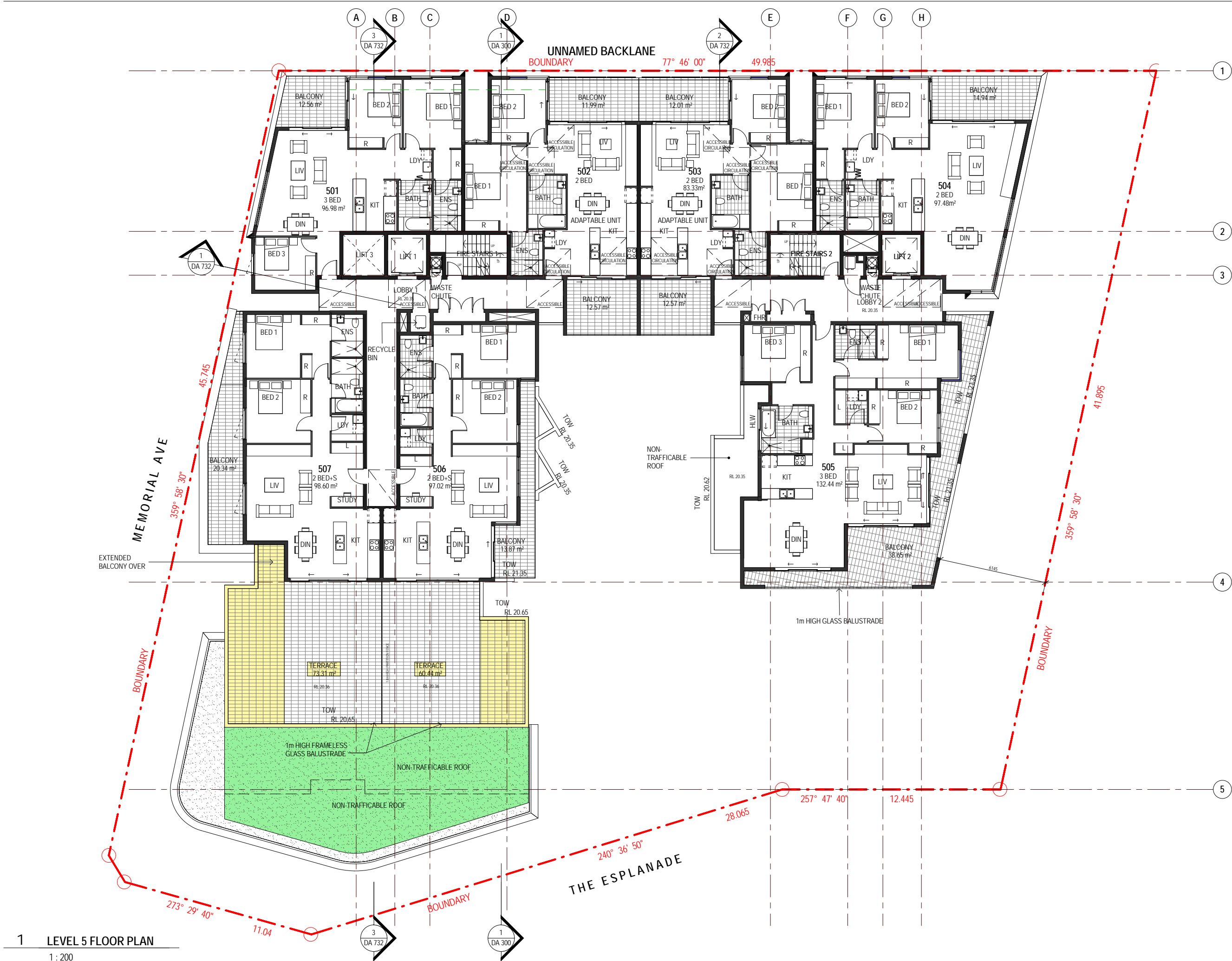
The copyright of this drawing together with any other documents prepared by charnie design (CD) remains the property of CD. CD grants licence for the use of this document for the purpose for which it is intended. The licence is not transferable without permission from CD.

Project  
**PROPOSED MIXED USE DEVELOPMENT**

47-50 THE ESPLANADE ETTALONG BEACH

Drawing Title  
**LEVEL 04  
FLOOR PLAN**

AMENDED SUBMISSION		
Job no.	Drawing no.	Rev.
J15304S2	DA 106	D
Drawn by Author	Checked by Checker	Date FEB 2017



REFERENCES

DRAWINGS TO BE READ IN CONJUNCTION WITH BUT NOT LIMITED TO ALL STRUCTURAL ENGINEERS, STORMWATER ENGINEERS, LANDSCAPE ARCHITECTS, AND OTHER ASSOCIATED PLANS & REPORTS

REFER TO THE BASIS REPORT FOR ADDITIONAL REQUIREMENTS TO THE ONES NOTED ON THE DRAWINGS.

NOTES

ALL DIMENSIONS AND SETOUTS ARE TO BE VERIFIED ON SITE AND ALL OMISSIONS OR ANY DISCREPANCIES TO BE NOTIFIED TO THE ARCHITECT.

FIGURED DIMENSIONS TO BE USED AT ALL TIME. DO NOT SCALE MEASUREMENTS OFF DRAWINGS.

PROPOSED AMENDMENTS

DIFFERENCE BETWEEN MOD 5 ORIGINAL SUBMISSION TO MOD 5 CURRENT SUBMISSION

**S75W AMENDMENTS 04.12.2018:**

- BALCONY TO UNITS 506 & 507 INCREASED
- LINE OF FRAMELESS BALUSTRADES TO UNITS 506 & 507 EXTENDED

F	06.12.18	General Amendments
E	04.12.18	Frameless Balustrades
D	27.09.18	General Amendments
C	04.07.17	Additional Information
B	27.03.17	General Amendments
A	16.02.17	Modification Submission
Rev.	Date	Description

Scale  
m 0 5 10 15 20  
1:500

Project Architect

**CDARCHITECTS**

LEVEL 2, 60 PARK STREET  
SYDNEY NSW 2000  
P: 02 9267 2000  
W: [www.cdarchitects.com.au](http://www.cdarchitects.com.au)

© Copyright

The copyright of this drawing together with any other documents prepared by charnie design (CD) remains the property of CD. CD grants licence for the use of this document for the purpose for which it is intended. The licence is not transferable without permission from CD.

Project  
**PROPOSED MIXED USE DEVELOPMENT**

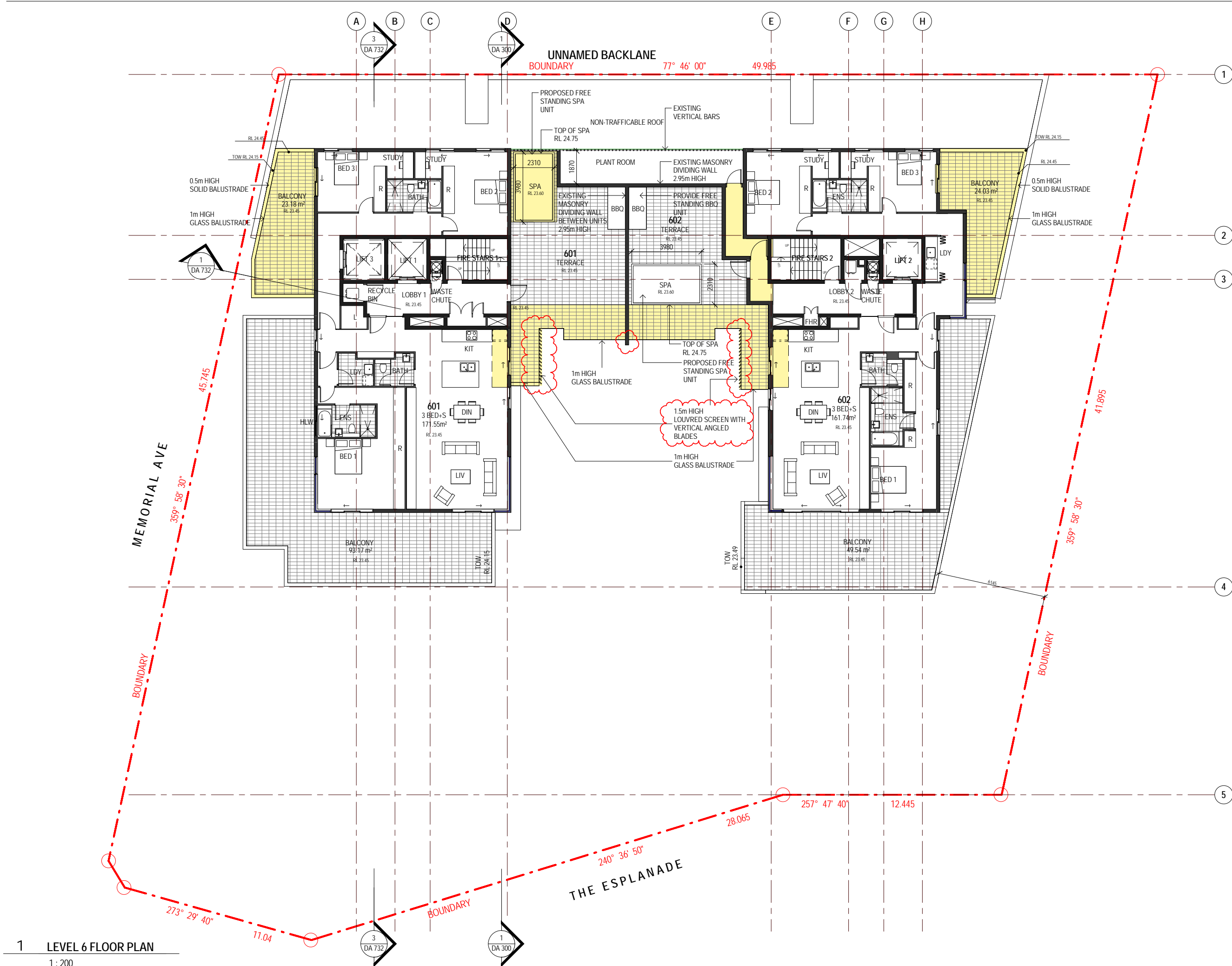
47-50 THE ESPLANADE ETTALONG BEACH

Drawing Title  
**LEVEL 05  
FLOOR PLAN**

AMENDED SUBMISSION		
Job no.	Drawing no.	Rev.
J15304S2	DA 107	F
Drawn by	Checked by	Date
Author	Checker	FEB 2017

**1 LEVEL 5 FLOOR PLAN**

1 : 200



REFERENCES

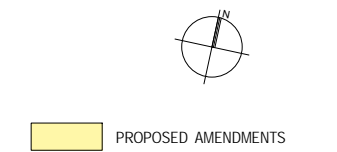
DRAWINGS TO BE READ IN CONJUNCTION WITH BUT NOT LIMITED TO ALL STRUCTURAL ENGINEERS, STORMWATER ENGINEERS, LANDSCAPE ARCHITECTS, AND OTHER ASSOCIATED PLANS & REPORTS

REFER TO THE BASIX REPORT FOR ADDITIONAL REQUIREMENTS TO THE ONES NOTED ON THE DRAWINGS.

NOTES

ALL DIMENSIONS AND SETOUTS ARE TO BE VERIFIED ON SITE AND ALL OMISSIONS OR ANY DISCREPANCIES TO BE NOTIFIED TO THE ARCHITECT.

FIGURED DIMENSIONS TO BE USED AT ALL TIME. DO NOT SCALE MEASUREMENTS OFF DRAWINGS.



- PROPOSED AMENDMENTS
- ADDITIONAL S75W AMENDMENTS 19.02.2019:
- 1.5m HIGH LOUVRED SCREENS WITH VERTICAL ANGLED BLADES ADDED TO UNIT 601 & 602 BALCONIES
  - WALL BETWEEN TERRACE 601 & 602 EXTENDED

H	19.02.19	General Amendments
G	17.12.18	General Amendments
F	04.12.18	General Amendments
E	27.09.18	General Amendments
D	25.05.18	Plant room amended, tiled Terrace proposed
C	04.07.17	Additional Information
B	27.03.17	General Amendments
A	16.02.17	Modification Submission

Rev.	Date	Description
1	16.02.17	Modification Submission

Scale  
m 0 2 4 6 8  
1:200

Project Architect

**CDARCHITECTS**

LEVEL 2, 60 PARK STREET  
SYDNEY NSW 2000  
P: 02 9267 2000  
W: [www.cdarchitects.com.au](http://www.cdarchitects.com.au)

© Copyright

The copyright of this drawing together with any other documents prepared by charnie design (CD) remains the property of CD. CD grants licence for the use of this document for the purpose for which it is intended. The licence is not transferable without permission from CD.

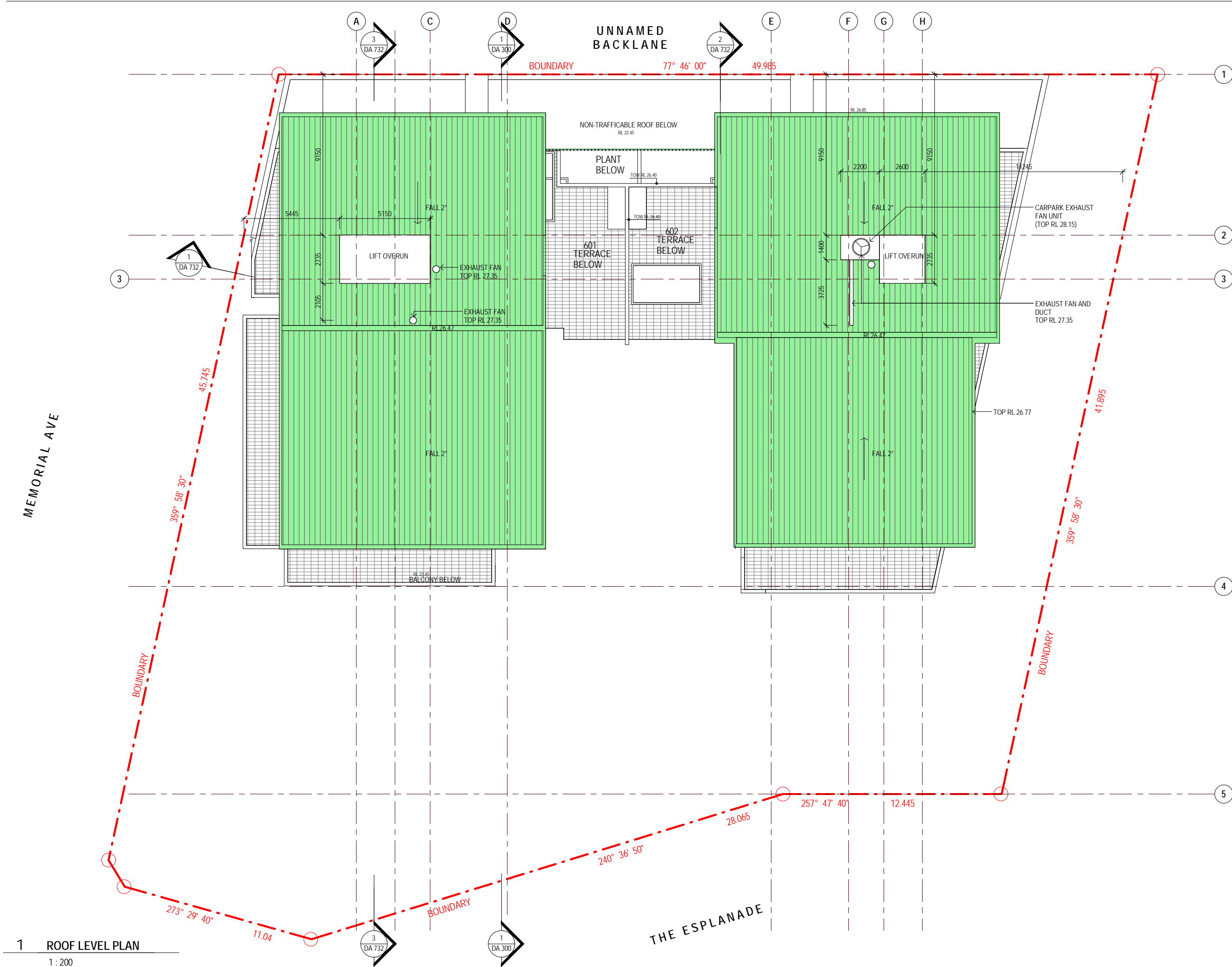
Project  
**PROPOSED MIXED USE DEVELOPMENT**

47-50 THE ESPLANADE ETTALONG BEACH

Drawing Title  
**LEVEL 06  
FLOOR PLAN**

AMENDED SUBMISSION		
Job no.	Drawing no.	Rev.
J15304S2	DA 108	H
Drawn by	Checked by	Date
PY	JY	FEB 2017

1 LEVEL 6 FLOOR PLAN  
1 : 200



REFERENCES

DRAWINGS TO BE READ IN CONJUNCTION WITH BUT NOT LIMITED TO ALL STRUCTURAL ENGINEERS, STORMWATER ENGINEERS, LANDSCAPE ARCHITECTS, AND OTHER ASSOCIATED PLANS & REPORTS

REFER TO THE BASIX REPORT FOR ADDITIONAL REQUIREMENTS TO THE ONES NOTED ON THE DRAWINGS.

NOTES

ALL DIMENSIONS AND SETOUTS ARE TO BE VERIFIED ON SITE AND ALL OMISSIONS OR ANY DISCREPANCIES TO BE NOTIFIED TO THE ARCHITECT.

FIGURED DIMENSIONS TO BE USED AT ALL TIME.

DO NOT SCALE MEASUREMENTS OFF DRAWINGS.



PROPOSED AMENDMENTS

DIFFERENCE BETWEEN MOD 5 ORIGINAL SUBMISSION TO MOD 5 CURRENT SUBMISSION

ADDITIONAL S75W AMENDMENTS 04.12.2018:

- CHANGES TO TERRACE BELOW ON LEVEL 6.

H	17.12.18	General Amendments
G	06.12.18	General Amendments
F	04.12.18	General Amendments
E	27.09.18	General Amendments
D	25.05.18	Plant room amended, tiled Terrace proposed
C	27.03.17	General Amendments
B	08.03.17	Lift overruns Shadow revised
A	16.02.17	Modification Submission

Rev.	Date	Description
1	16.02.17	Modification Submission

Scale  
m 0 5 10 15 20  
1:500

Project Architect

**CDARCHITECTS**

LEVEL 2, 60 PARK STREET  
SYDNEY NSW 2000  
P: 02 9267 2000  
W: www.cdarchitects.com.au

© Copyright

The copyright of this drawing together with any other documents prepared by charnie design (CD) remains the property of CD. CD grants licence for the use of this document for the purpose for which it is intended. The licence is not transferable without permission from CD.

Project  
**PROPOSED MIXED USE DEVELOPMENT**

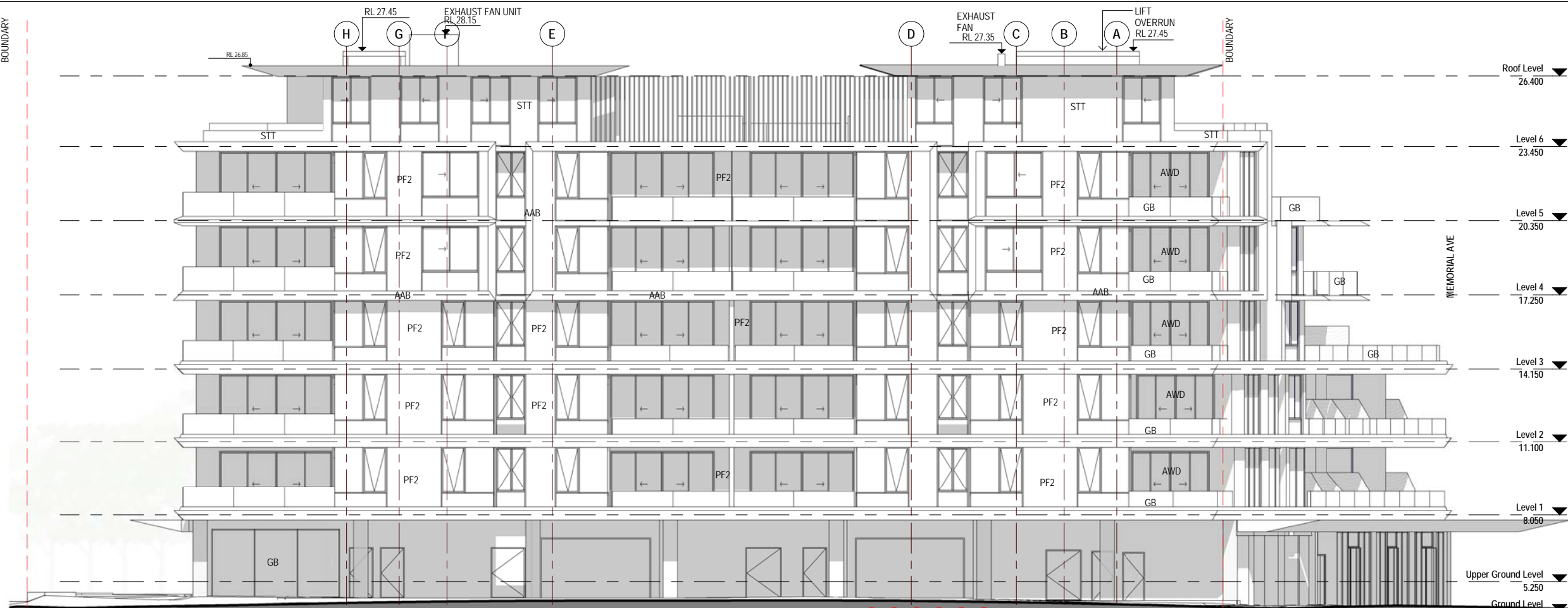
47-50 THE ESPLANADE ETTALONG BEACH

Drawing Title  
**ROOF PLAN**

AMENDED SUBMISSION		
Job no.	Drawing no.	Rev.
J15304S2	DA 109	H
Drawn by	Checked by	Date
PY	JY	FEB 2017



BOUNDARY



## 1 NORTH ELEVATION

1:200

BOUNDARY

MEMORIAL AVE



## 2 SOUTH ELEVATION

1:200

### REFERENCES

DRAWINGS TO BE READ IN CONJUNCTION WITH BUT NOT LIMITED TO ALL STRUCTURAL ENGINEERS, STORMWATER ENGINEERS, LANDSCAPE ARCHITECTS, AND OTHER ASSOCIATED PLANS & REPORTS

REFER TO THE BASIS REPORT FOR ADDITIONAL REQUIREMENTS TO THE ONES NOTED ON THE DRAWINGS.

### NOTES

ALL DIMENSIONS AND SETOUTS ARE TO BE VERIFIED ON SITE AND ALL OMISSIONS OR ANY DISCREPANCIES TO BE NOTIFIED TO THE ARCHITECT.  
FIGURED DIMENSIONS TO BE USED AT ALL TIME.  
DO NOT SCALE MEASUREMENTS OFF DRAWINGS.

### MATERIAL LEGEND

AAB	ANODISED ALUMINIUM BLADE
AVB	ALUMINIUM VERTICAL BLADE & AWNING
AWD	ALUMINIUM FRAME WINDOWS & DOORS - COLOUR 1
GB	SAFETY GLASS BALUSTRADE
PF1	MANABURN PAINT FINISH
PF2	CHARCOAL PAINT FINISH
STT	SANDSTONE TILED WALL

### PROPOSED AMENDMENTS

H	19.02.19	General Amendments
G	04.12.18	General Amendments
F	27.09.18	General Amendments
E	25.05.18	Plant room amended, tiled Terrace proposed
D	14.07.17	Additional Information
C	27.03.17	General Amendments
B	08.03.17	Lift overruns Shadow revised
A	16.02.17	Modification Submission

Rev.	Date	Description
1	19.02.2019	ADDITIONAL STSW AMENDMENTS 19.02.2019

• 1.5m HIGH LOUVRED SCREEN WITH VERTICAL ANGLED BLADES ADDED TO UNIT 601 & 602 BALCONIES

Project Architect

CDARCHITECTS

LEVEL 2, 60 PARK STREET  
SYDNEY NSW 2000  
P: 02 9267 2000  
W: www.cdarchitects.com.au

© Copyright

The copyright of this drawing together with any other documents prepared by charnie design (CD) remains the property of CD. CD grants licence for the use of this document for the purpose for which it is intended. The licence is not transferable without permission from CD.

Project

PROPOSED MIXED USE DEVELOPMENT

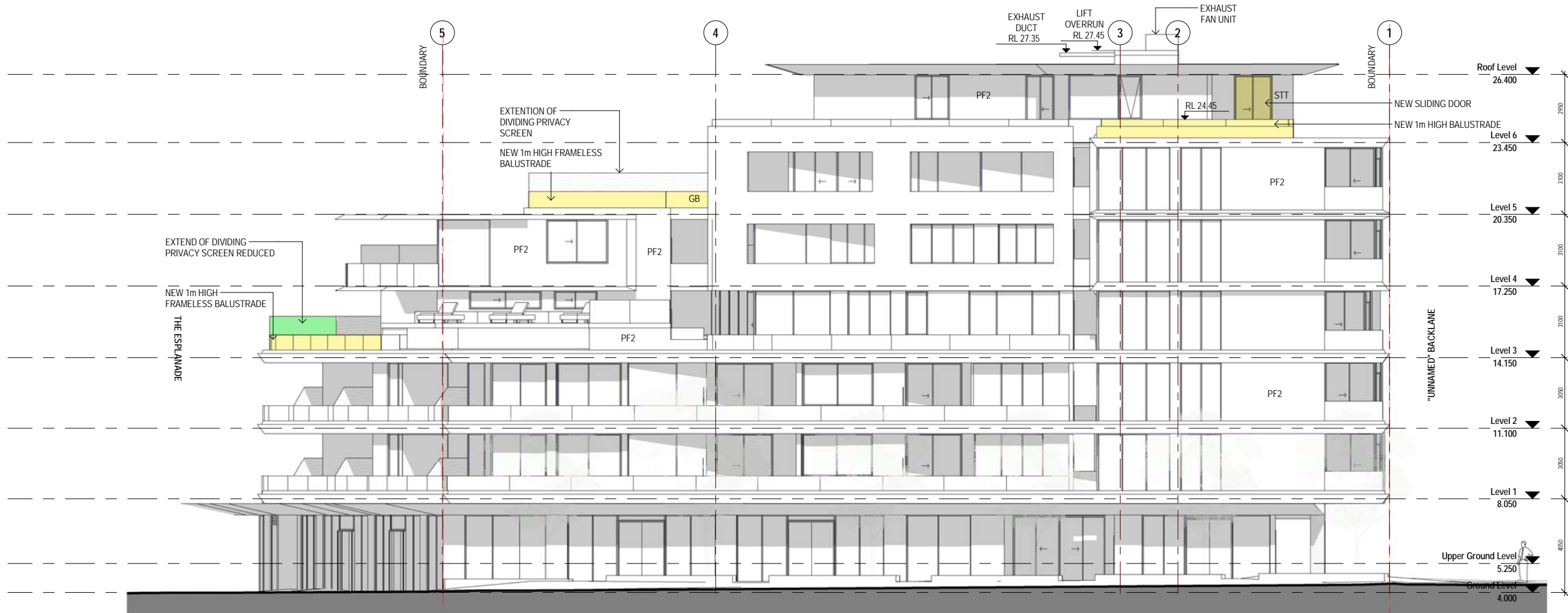
47-50 THE ESPLANADE ET TALONG BEACH

Drawing Title  
NORTH & SOUTH  
ELEVATIONS

### AMENDED SUBMISSION

Job no.	Drawing no.	Rev.
J15304S2	DA 200	H
Drawn by	Checked by	Date
PY	ZC	FEB 2017





1 EAST ELEVATION

1 : 200



2 WEST ELEVATION

1 : 200

#### REFERENCES

DRAWINGS TO BE READ IN CONJUNCTION WITH BUT NOT LIMITED TO ALL STRUCTURAL ENGINEERS, STORMWATER ENGINEERS, LANDSCAPE ARCHITECTS, AND OTHER ASSOCIATED PLANS & REPORTS

REFER TO THE BASIS REPORT FOR ADDITIONAL REQUIREMENTS TO THE ONES NOTED ON THE DRAWINGS.

#### NOTES

ALL DIMENSIONS AND SETOUTS ARE TO BE VERIFIED ON SITE AND ALL OMISSIONS OR ANY DISCREPANCIES TO BE NOTIFIED TO THE ARCHITECT.  
FIGURED DIMENSIONS TO BE USED AT ALL TIME.  
DO NOT SCALE MEASUREMENTS OFF DRAWINGS.

#### MATERIAL LEGEND

AAB	ANODISED ALUMINIUM BLADE
AVB	ALUMINIUM VERTICAL BLADE & AWNING
AWD	ALUMINIUM FRAME WINDOWS & DOORS - COLOUR 1
GB	SAFETY GLASS BALUSTRADE
PF1	MANABURN PAINT FINISH
PF2	CHARCOAL PAINT FINISH
STT	SANDSTONE TILED WALL

PROPOSED AMENDMENTS

DIFFERENCE BETWEEN MOD 5 ORIGINAL SUBMISSION TO MOD 5 CURRENT SUBMISSION

G	06.12.18	General Amendments
F	04.12.18	General Amendments
E	27.09.18	General Amendments
D	14.07.17	Additional Information
C	27.03.17	General Amendments
B	08.03.17	Lift overruns Shadow revised
A	16.02.17	Modification Submission

Rev.	Date	Description
1	16.02.17	Modification Submission



Project Architect

**CD**  
CDARCHITECTS

LEVEL 2, 60 PARK STREET  
SYDNEY NSW 2000  
P: 02 9267 2000  
W: www.cdarchitects.com.au

© Copyright

The copyright of this drawing together with any other documents prepared by charnie design (CD) remains the property of CD. CD grants licence for the use of this document for the purpose for which it is intended. The licence is not transferable without permission from CD.

Project

PROPOSED MIXED USE DEVELOPMENT

47-50 THE ESPLANADE ETTALONG BEACH

Drawing Title  
**EAST & WEST  
ELEVATIONS**

#### AMENDED SUBMISSION

Job no.	Drawing no.	Rev.
J15304S2	DA 201	G
Drawn by PY	Checked by JY	Date FEB 197

REFERENCES

DRAWINGS TO BE READ IN CONJUNCTION WITH BUT NOT LIMITED TO ALL STRUCTURAL ENGINEERS, STORMWATER ENGINEERS, LANDSCAPE ARCHITECTS, AND OTHER ASSOCIATED PLANS & REPORTS

REFER TO THE BASIX REPORT FOR ADDITIONAL REQUIREMENTS TO THE ONES NOTED ON THE DRAWINGS.

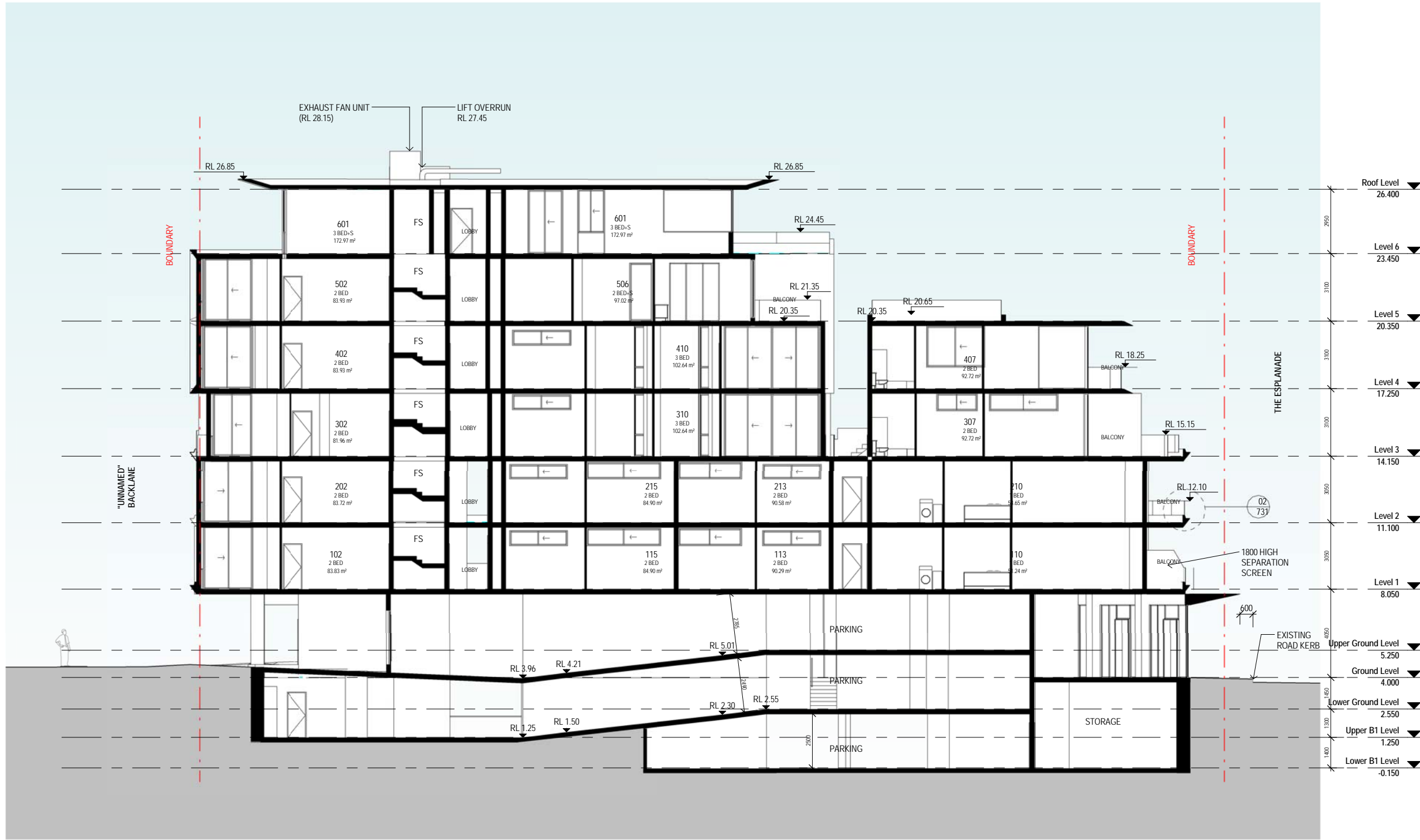
NOTES

ALL DIMENSIONS AND SETOUTS ARE TO BE VERIFIED ON SITE AND ALL OMISSIONS OR ANY DISCREPANCIES TO BE NOTIFIED TO THE ARCHITECT.

FIGURED DIMENSIONS TO BE USED AT ALL TIME.

DO NOT SCALE MEASUREMENTS OFF DRAWINGS.

NO CHANGE



	04.12.18	General Amendments
	27.09.18	General Amendments
	14.07.17	Additional Information
	08.03.17	Lift overruns Shadow revised
	16.02.17	Modification Submission
Rev.	Date	Description

Scale

Project Architect

**CD**  
CDARCHITECTS

LEVEL 2, 60 PARK STREET  
SYDNEY NSW 2000  
P: 02 9267 2000  
W: www.cdarchitects.com.au

© Copyright

The copyright of this drawing together with any other documents prepared by charnie design (CD) remains the property of CD. CD grants licence for the use of this document for the purpose for which it is intended. The licence is not transferable without permission from CD.

Project  
PROPOSED MIXED USE DEVELOPMENT

47-50 THE ESPLANADE ETTALONG BEACH  
Drawing Title  
SECTION A

AMENDED SUBMISSION		
Job no.	Drawing no.	Rev.
J15304S2	DA 300	E
Drawn by	Checked by	Date
PY	ZC	FEB 2017

1 SECTION A  
1 : 200