

REFERENCES

DRAWINGS TO BE READ IN CONJUNCTION WITH BUT NOT LIMITED TO ALL STRUCTURAL ENGINEERS, STORMWATER ENGINEERS, LANDSCAPE ARCHITECTS, AND OTHER ASSOCIATED PLANS & REPORTS

REFER TO THE BASIS REPORT FOR ADDITIONAL REQUIREMENTS TO THE ONES NOTED ON THE DRAWINGS.

NOTES

ALL DIMENSIONS AND SETOUTS ARE TO BE VERIFIED ON SITE AND ALL OMISSIONS OR ANY DISCREPANCIES TO BE NOTIFIED TO THE ARCHITECT.

FIGURED DIMENSIONS TO BE USED AT ALL TIME.

DO NOT SCALE MEASUREMENTS OFF DRAWINGS.

PROPOSED AMENDMENTS

AREA ADDED TO GFA

ADDITIONAL S75W AMENDMENTS 26.09.18:

- ENTRY INTO PRIVATE LOBBY AMENDED
- PUBLIC BATHROOM DOOR LOCATION AND INTERNAL LAYOUT MODIFIED

Rev. Date Description

F	27.09.18	General Amendments
E	04.08.17	Additional Information
D	14.07.17	Additional Information
C	04.07.17	Additional Information
B	27.03.17	General Amendments
A	16.02.17	Modification Submission

Scale

0 5 10 15 20

1:500

Project Architect

**CDARCHITECTS**

LEVEL 2, 60 PARK STREET  
SYDNEY NSW 2000  
P: 02 9267 2000  
W: www.cdarchitects.com.au

© Copyright

The copyright of this drawing together with any other documents prepared by charine design (CD) remains the property of CD. CD grants licence for the use of this document for the purpose for which it is intended. The licence is not transferable without permission from CD.

Project

**PROPOSED MIXED USE DEVELOPMENT**

47-50 THE ESPLANADE ETTALONG BEACH

Drawing Title

**GROUND FLOOR PLAN**

AMENDED SUBMISSION			
Job no.	Drawing no.	Rev.	
J15304S2	DA 101	F	

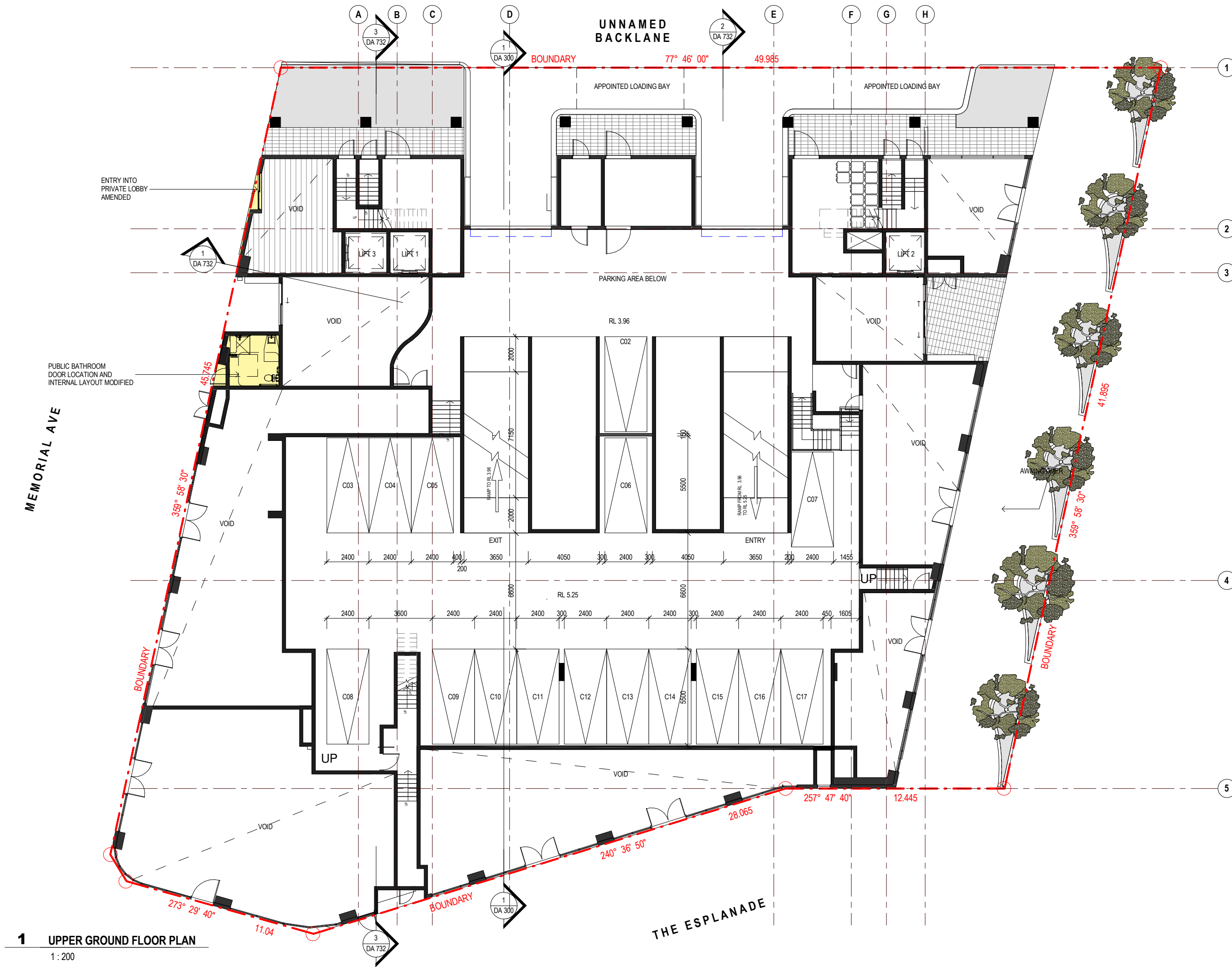
Drawn by	Checked by	Date
Author	Checker	FEB 2017

**CAR PARKING SCHEDULE**  
For B2 Zone – Large Centres

UNITS	RATE	REQUIRED	PROPOSED
RESIDENTIAL (59 UNITS)			
SHOP TOP UNITS 1 SPACE / 1 UNIT		59	61
VISITORS (59 UNITS)			
VISITORS NOT REQUIRED		0	0
COMMERCIAL (521.8m <sup>2</sup> )			
SHOPS 1 SPACE / 30 m <sup>2</sup>		17.39	17
TOTAL		76.39	78

**BICYCLE SCHEDULE**  
For B2 Zone – Large Centres

UNITS	RATE	REQUIRED	PROPOSED
RESIDENTIAL (59 UNITS)	1 SPACE / 5 UNITS	11.8	12
VISITORS (59 UNITS)	1 SPACE / 10 UNITS	5.9	6
COMMERCIAL (521.8 m <sup>2</sup> )		2	2
TOTAL		19.7	20



REFERENCES

DRAWINGS TO BE READ IN CONJUNCTION WITH BUT NOT LIMITED TO ALL STRUCTURAL ENGINEERS, STORMWATER ENGINEERS, LANDSCAPE ARCHITECTS, AND OTHER ASSOCIATED PLANS & REPORTS

REFER TO THE BASIS REPORT FOR ADDITIONAL REQUIREMENTS TO THE ONES NOTED ON THE DRAWINGS.

NOTES

ALL DIMENSIONS AND SETOUTS ARE TO BE VERIFIED ON SITE AND ALL OMISSIONS OR ANY DISCREPANCIES TO BE NOTIFIED TO THE ARCHITECT.

FIGURED DIMENSIONS TO BE USED AT ALL TIME.

DO NOT SCALE MEASUREMENTS OFF DRAWINGS.

PROPOSED AMENDMENTS

AREA ADDED TO GFA

ADDITIONAL S75W AMENDMENTS 26.09.18:

- ENTRY INTO PRIVATE LOBBY AMENDED
- PUBLIC BATHROOM DOOR LOCATION AND INTERNAL LAYOUT MODIFIED

C	27.09.18	General Amendments
B	27.03.17	General Amendments
A	16.02.17	Modification Submission
Rev.	Date	Description
Scale	0	1:500
m	5	10
	15	20

Project Architect

CDARCHITECTS

LEVEL 2, 60 PARK STREET  
SYDNEY NSW 2000  
P: 02 9267 2000  
W: www.cdarchitects.com.au

© Copyright

The copyright of this drawing together with any other documents prepared by charnie design (CD) remains the property of CD. CD grants licence for the use of this document for the purpose for which it is intended. The licence is not transferable without permission from CD.

Project

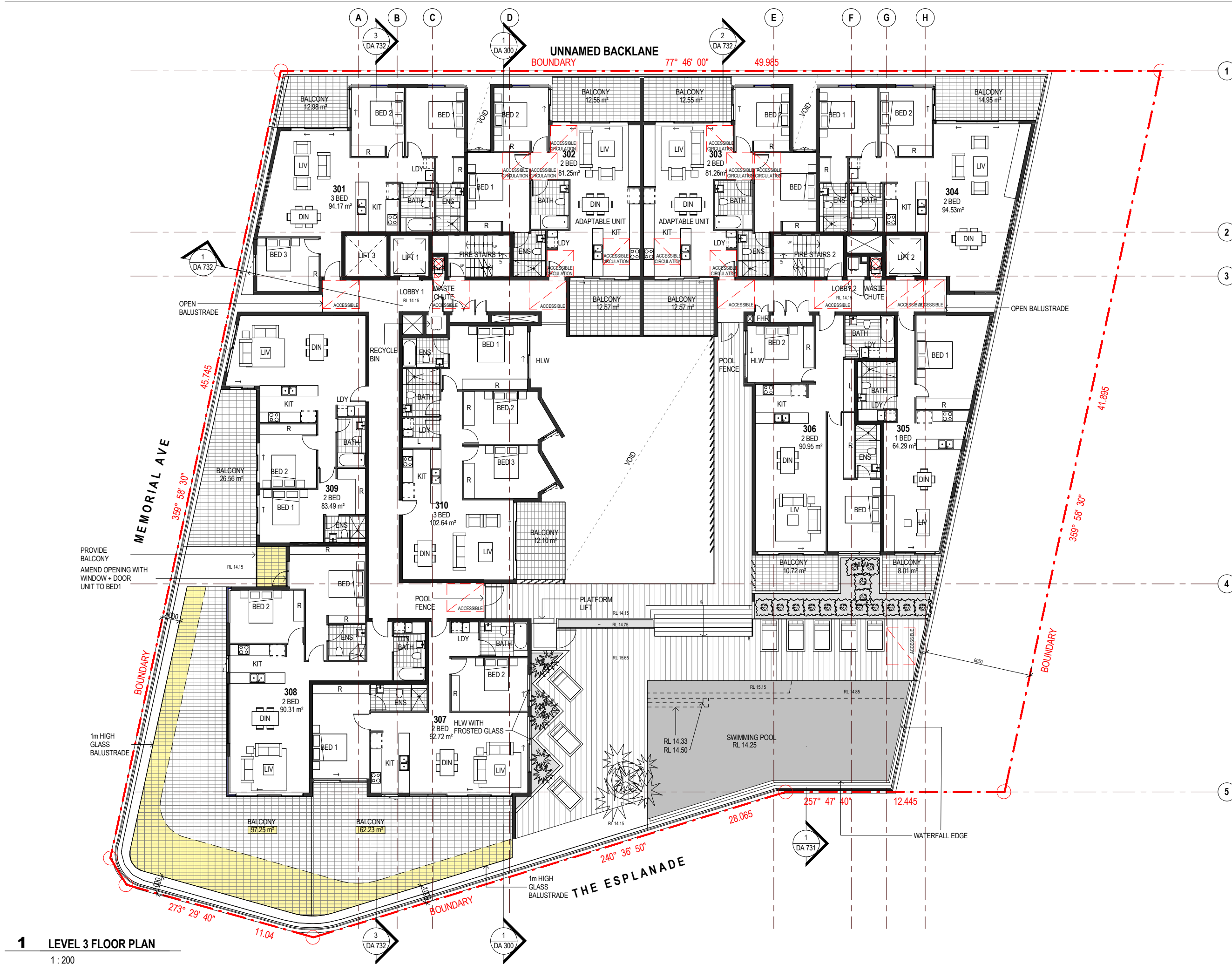
PROPOSED MIXED USE DEVELOPMENT

47-50 THE ESPLANADE ETTALONG BEACH

Drawing Title

UPPER GROUND  
FLOOR PLAN (COMPARISON SHEET)

AMENDED SUBMISSION		
Job no.	Drawing no.	Rev.
J15304S2	DA 102	C
Drawn by	Checked by	Date
Author	Checker	FEB 2017



REFERENCES

DRAWINGS TO BE READ IN CONJUNCTION WITH BUT NOT LIMITED TO ALL STRUCTURAL ENGINEERS, STORMWATER ENGINEERS, LANDSCAPE ARCHITECTS, AND OTHER ASSOCIATED PLANS & REPORTS

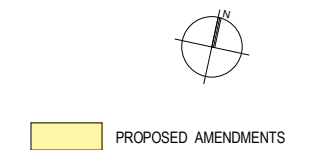
REFER TO THE BASIS REPORT FOR ADDITIONAL REQUIREMENTS TO THE ONES NOTED ON THE DRAWINGS.

NOTES

ALL DIMENSIONS AND SETOUTS ARE TO BE VERIFIED ON SITE AND ALL OMISSIONS OR ANY DISCREPANCIES TO BE NOTIFIED TO THE ARCHITECT.

FIGURED DIMENSIONS TO BE USED AT ALL TIME.

DO NOT SCALE MEASUREMENTS OFF DRAWINGS.



- S75W AMENDMENTS 26.09.2018:
- BALCONY TO UNITS 307 & 308 AMENDED AND INCREASED
  - LINE OF BALUSTRADES TO UNITS 307 & 308 EXTENDED
  - BALCONY TO B1 OF UNIT 308 ADDED
  - OPENING TO B1 OF UNIT 308 AMENDED

D	27.09.18	General Amendments
C	04.07.17	Additional Information
B	27.03.17	General Amendments
A	16.02.17	Modification Submission
Rev.	Date	Description
Scale	0 5 10 15 20	
m	1:500	

Project Architect

**CDARCHITECTS**

LEVEL 2, 60 PARK STREET  
SYDNEY NSW 2000  
P: 02 9267 2000  
W: www.cdarchitects.com.au

© Copyright

The copyright of this drawing together with any other documents prepared by charnie design (CD) remains the property of CD. CD grants licence for the use of this document for the purpose for which it is intended. The licence is not transferable without permission from CD.

Project

**PROPOSED MIXED USE DEVELOPMENT**

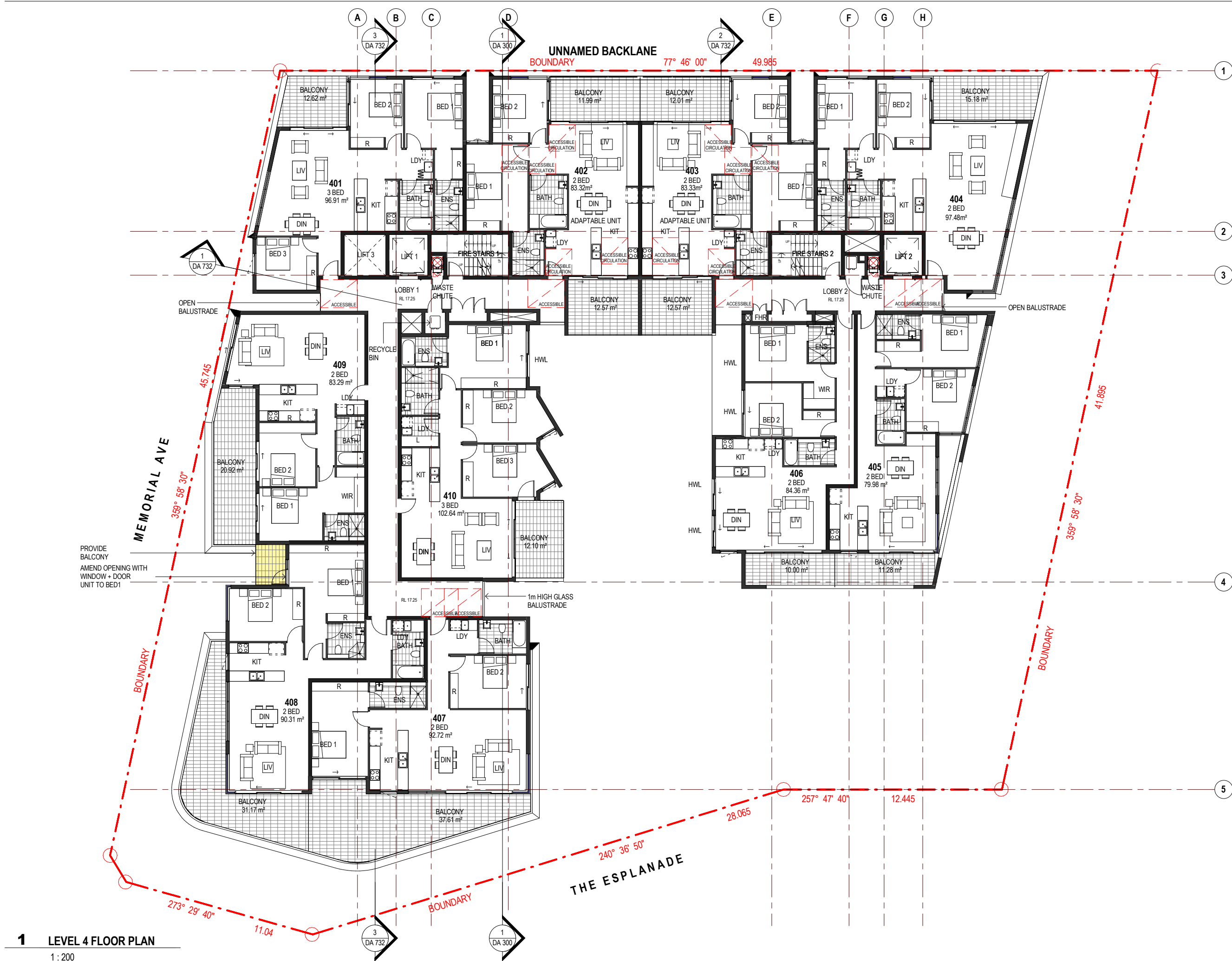
47-50 THE ESPLANADE ETTALONG BEACH

Drawing Title

**LEVEL 03  
FLOOR PLAN**

AMENDED SUBMISSION		
Job no.	Drawing no.	Rev.
J15304S2	DA 105	D
Drawn by	Checked by	Date
Author	Checker	FEB 2017





REFERENCES

DRAWINGS TO BE READ IN CONJUNCTION WITH BUT NOT LIMITED TO ALL STRUCTURAL ENGINEERS, STORMWATER ENGINEERS, LANDSCAPE ARCHITECTS, AND OTHER ASSOCIATED PLANS & REPORTS

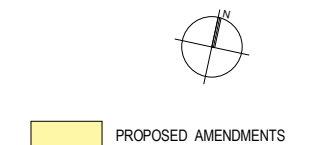
REFER TO THE BASIX REPORT FOR ADDITIONAL REQUIREMENTS TO THE ONES NOTED ON THE DRAWINGS.

NOTES

ALL DIMENSIONS AND SETOUTS ARE TO BE VERIFIED ON SITE AND ALL OMISSIONS OR ANY DISCREPANCIES TO BE NOTIFIED TO THE ARCHITECT.

FIGURED DIMENSIONS TO BE USED AT ALL TIME.

DO NOT SCALE MEASUREMENTS OFF DRAWINGS.



S75W AMENDMENTS 26.09.2018:

- BALCONY TO B1 OF UNIT 408 ADDED
- OPENING TO B1 OF UNIT 408 AMENDED

04.07.17	Additional Information	
27.03.17	General Amendments	
16.02.17	Modification Submission	
Rev.	Date	Description
<div><div>Scale</div><div><div><div>m</div><div>0</div><div>5</div><div>10</div><div>15</div><div>20</div></div><div><div>1:500</div></div></div></div>		

Project Architect

**CDARCHITECTS**

LEVEL 2, 60 PARK STREET  
SYDNEY NSW 2000  
P: 02 9267 2000  
W: www.cdarchitects.com.au

© Copyright

The copyright of this drawing together with any other documents prepared by charnie design (CD) remains the property of CD. CD grants licence for the use of this document for the purpose for which it is intended. The licence is not transferable without permission from CD.

Project

**PROPOSED MIXED USE DEVELOPMENT**

47-50 THE ESPLANADE ETTALONG BEACH

Drawing Title

**LEVEL 04  
FLOOR PLAN**

AMENDED SUBMISSION		
Job no.	Drawing no.	Rev.
J15304S2	DA 106	C
Drawn by	Checked by	Date
Author	Checker	FEB 2017

**1 LEVEL 4 FLOOR PLAN**

1 : 200

REFERENCES

DRAWINGS TO BE READ IN CONJUNCTION WITH BUT NOT LIMITED TO ALL STRUCTURAL ENGINEERS, STORMWATER ENGINEERS, LANDSCAPE ARCHITECTS, AND OTHER ASSOCIATED PLANS & REPORTS

REFER TO THE BASIX REPORT FOR ADDITIONAL REQUIREMENTS TO THE ONES NOTED ON THE DRAWINGS.

NOTES

ALL DIMENSIONS AND SETOUTS ARE TO BE VERIFIED ON SITE AND ALL OMISSIONS OR ANY DISCREPANCIES TO BE NOTIFIED TO THE ARCHITECT.

FIGURED DIMENSIONS TO BE USED AT ALL TIME.

DO NOT SCALE MEASUREMENTS OFF DRAWINGS.



PROPOSED AMENDMENTS

S75W AMENDMENTS 26.09.2018:

- BALCONY TO UNITS 506 & 507 AMENDED AND INCREASED
- LINE OF BALUSTRADES TO UNITS 506 & 507 EXTENDED

D	27.09.18	General Amendments
C	04.07.17	Additional Information
B	27.03.17	General Amendments
A	16.02.17	Modification Submission
Rev.	Date	Description
Scale	0 5 10 15 20	
m	1:500	

Project Architect

**CD A**  
CDARCHITECTS

LEVEL 2, 60 PARK STREET  
SYDNEY NSW 2000  
P: 02 9267 2000  
W: www.cdarchitects.com.au

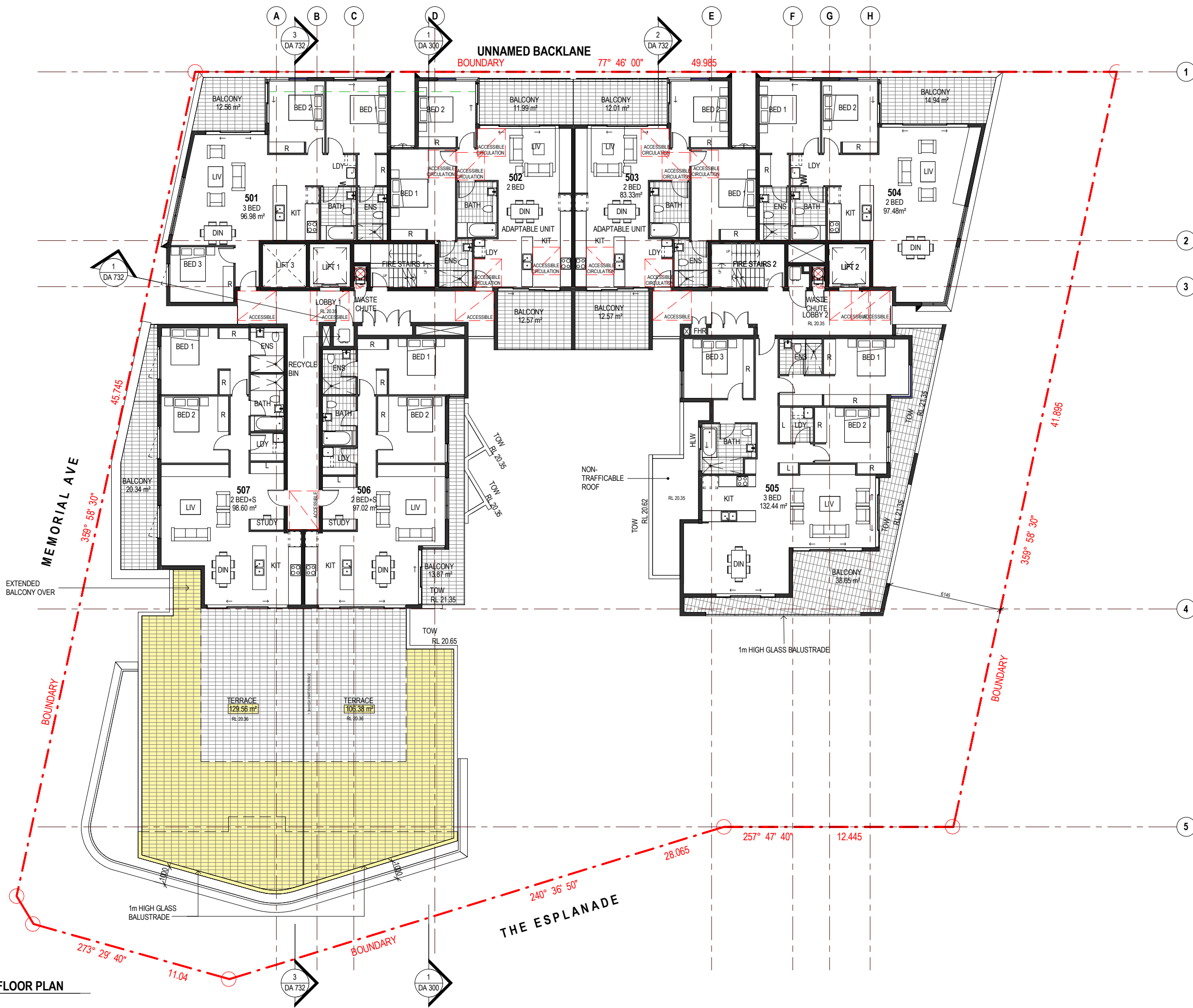
© Copyright

The copyright of this drawing together with any other documents prepared by charnie design (CD) remains the property of CD. CD grants licence for the use of this document for the purpose for which it is intended. The licence is not transferable without permission from CD.

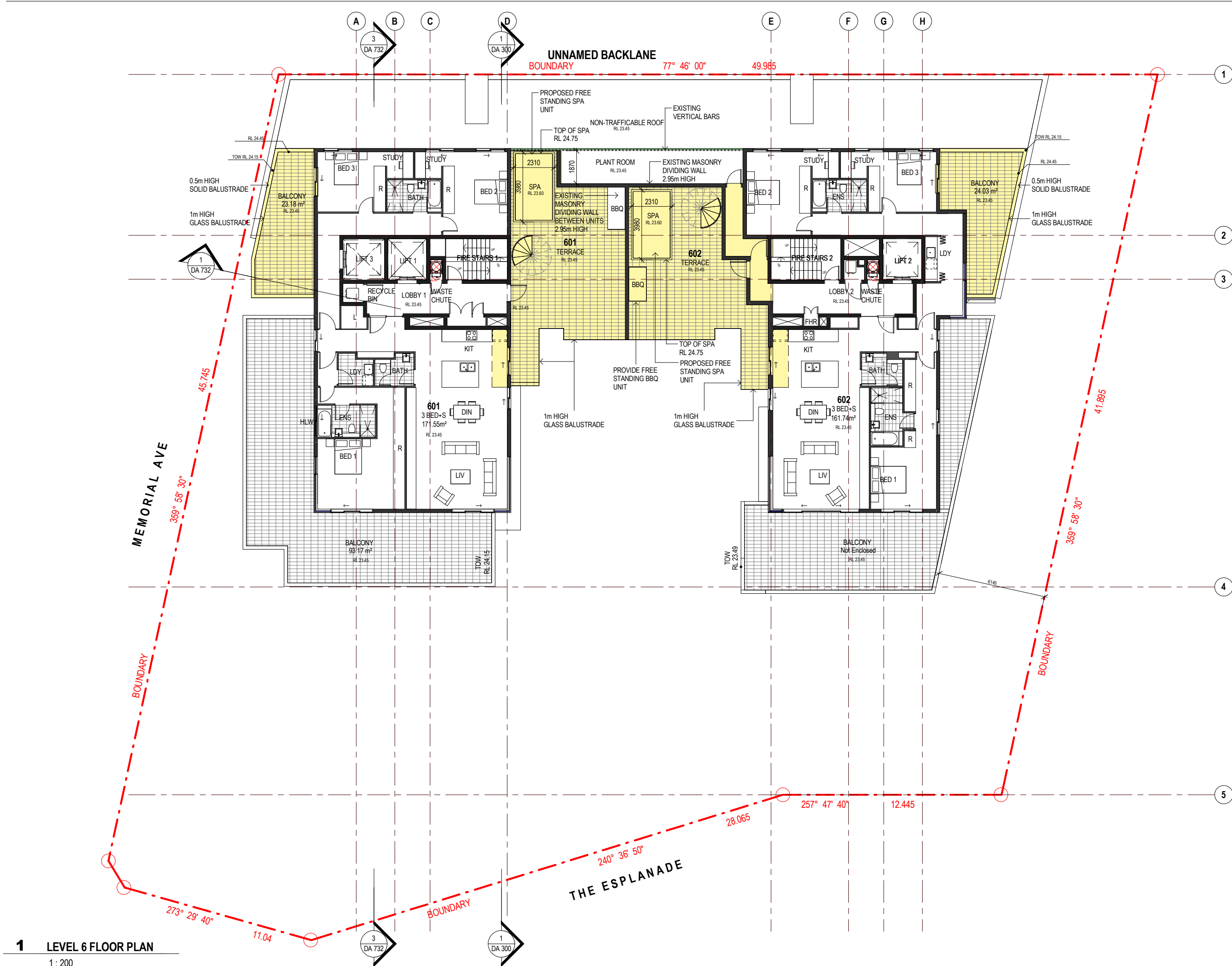
Project  
**PROPOSED MIXED USE DEVELOPMENT**

47-50 THE ESPLANADE ETTALONG BEACH  
Drawing Title  
**LEVEL 05  
FLOOR PLAN**

AMENDED SUBMISSION		
Job no.	Drawing no.	Rev.
J15304S2	DA 107	D
Drawn by	Checked by	Date
Author	Checker	FEB 2017



**1 LEVEL 5 FLOOR PLAN**  
1 : 200



REFERENCES

DRAWINGS TO BE READ IN CONJUNCTION WITH BUT NOT LIMITED TO ALL STRUCTURAL ENGINEERS, STORMWATER ENGINEERS, LANDSCAPE ARCHITECTS, AND OTHER ASSOCIATED PLANS & REPORTS

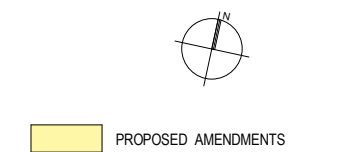
REFER TO THE BASIS REPORT FOR ADDITIONAL REQUIREMENTS TO THE ONES NOTED ON THE DRAWINGS.

NOTES

ALL DIMENSIONS AND SETOUTS ARE TO BE VERIFIED ON SITE AND ALL OMISSIONS OR ANY DISCREPANCIES TO BE NOTIFIED TO THE ARCHITECT.

FIGURED DIMENSIONS TO BE USED AT ALL TIME.

DO NOT SCALE MEASUREMENTS OFF DRAWINGS.



- ADDITIONAL S75W AMENDMENTS 26.09.2018:
- BALCONY PROVIDED TO BED 3 OF UNITS 601 & 602
  - PLANT ROOM AREA REDUCED
  - SPA RELOCATED IN TERRACE OF UNITS 601 & 602
  - SCREEN TO FRONT OF TERRACE OF UNITS 601 & 602 REMOVED
  - SPIRAL STAIRS PROVIDED IN TERRACE OF UNITS 601 & 602
  - NEW BALUSTRADE PROVIDED TO THE FRONT OF TERRACE OF UNITS 601 & 602
  - SLIDING DOOR PROVIDED TO KITCHENS OF UNITS 601 & 602
  - ISOLATED DOOR PROVIDED TO KITCHENS OF UNITS 601 & 602
  - ISOLATED ENTRY PLANT ROOM PROVIDED TO LOBBY 2

E	27.09.18	General Amendments
D	25.05.18	Plant room amended, tiled Terrace proposed
C	04.07.17	Additional Information
B	27.03.17	General Amendments
A	16.02.17	Modification Submission

Rev.	Date	Description
1		

Scale  
m 0 2 4 6 8  
1:200

Project Architect

**CDARCHITECTS**

LEVEL 2, 60 PARK STREET  
SYDNEY NSW 2000  
P: 02 9267 2000  
W: [www.cdarchitects.com.au](http://www.cdarchitects.com.au)

© Copyright

The copyright of this drawing together with any other documents prepared by charnie design (CD) remains the property of CD. CD grants licence for the use of this document for the purpose for which it is intended. The licence is not transferable without permission from CD.

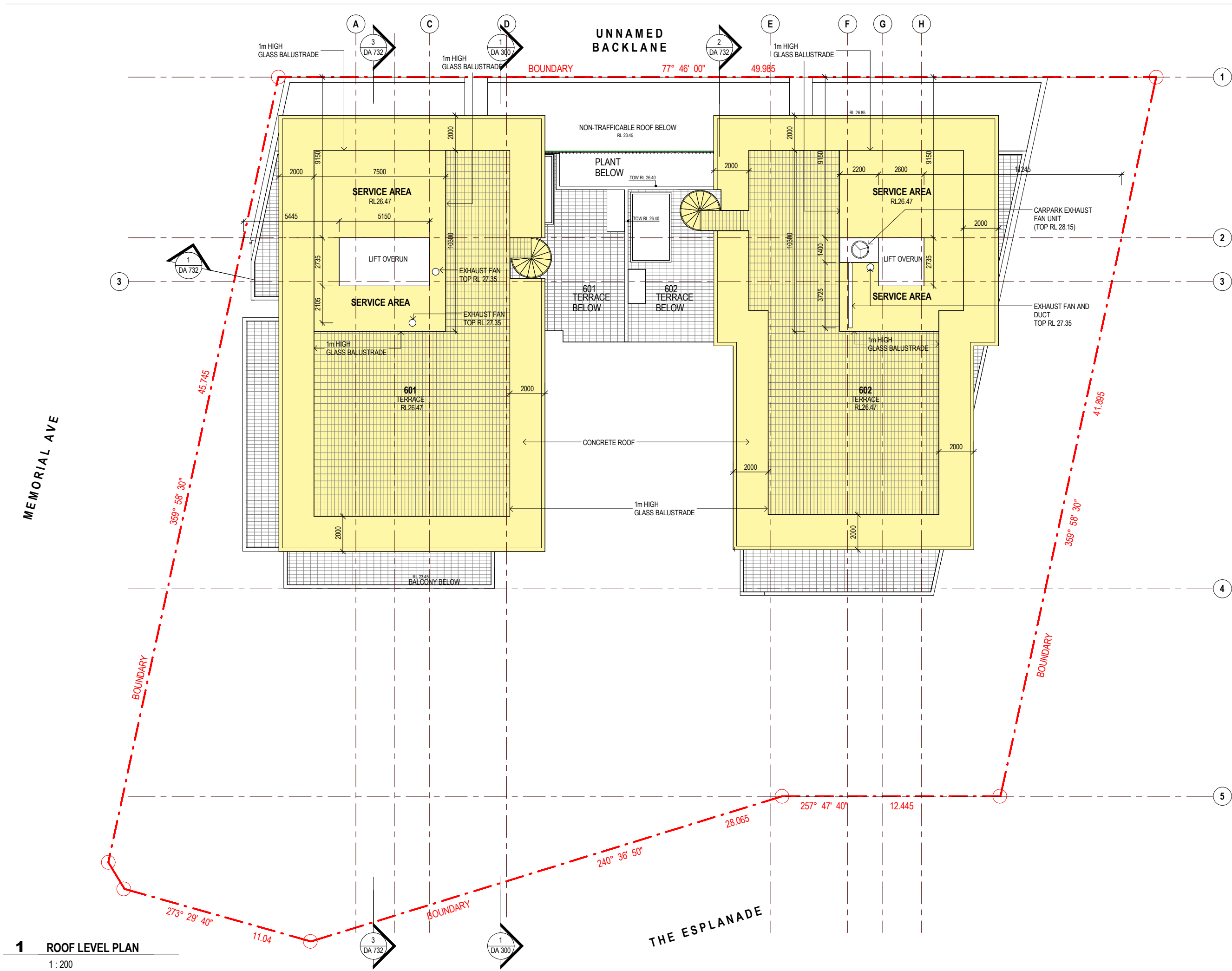
Project  
**PROPOSED MIXED USE DEVELOPMENT**

47-50 THE ESPLANADE ETTALONG BEACH

Drawing Title  
**LEVEL 06  
FLOOR PLAN**

AMENDED SUBMISSION		
Job no.	Drawing no.	Rev.
J15304S2	DA 108	E
Drawn by	Checked by	Date
PY	JY	FEB 2017

**1 LEVEL 6 FLOOR PLAN**  
1 : 200



**REFERENCES**

DRAWINGS TO BE READ IN CONJUNCTION WITH BUT NOT LIMITED TO ALL STRUCTURAL ENGINEERS, STORMWATER ENGINEERS, LANDSCAPE ARCHITECTS, AND OTHER ASSOCIATED PLANS & REPORTS

REFER TO THE BASIS REPORT FOR ADDITIONAL REQUIREMENTS TO THE ONES NOTED ON THE DRAWINGS.

**NOTES**

ALL DIMENSIONS AND SETOUTS ARE TO BE VERIFIED ON SITE AND ALL OMISSIONS OR ANY DISCREPANCIES TO BE NOTIFIED TO THE ARCHITECT.

FIGURED DIMENSIONS TO BE USED AT ALL TIME.

DO NOT SCALE MEASUREMENTS OFF DRAWINGS.



PROPOSED AMENDMENTS

- ADDITIONAL S75W AMENDMENTS 26.09.2018:**
- ROOF OVER UNITS 601 & 602 MODIFIED TO BE FLAT CONCRETE SLAB
  - SERVICE AREAS OVER UNITS 601 & 602 PROVIDED AND NEW BALUSTRADE PROVIDED TO AREA
  - SPIRAL STAIRS PROVIDED TO ROOFS OVER UNITS 601 & 602
  - NEW 1m BALUSTRADE PROVIDED TO PERIMETER OF ROOFS

E	27.09.18	General Amendments
D	25.05.18	Plant room amended, tiled Terrace proposed
C	27.03.17	General Amendments
B	08.03.17	Lift overruns Shadow revised
A	16.02.17	Modification Submission
Rev.	Date	Description

Scale

m

0

5

10

15

20

1:500

Project Architect

**CDARCHITECTS**

LEVEL 2, 60 PARK STREET  
SYDNEY NSW 2000  
P: 02 9267 2000  
W: [www.cdarchitects.com.au](http://www.cdarchitects.com.au)

© Copyright

The copyright of this drawing together with any other documents prepared by charnie design (CD) remains the property of CD. CD grants licence for the use of this document for the purpose for which it is intended. The licence is not transferable without permission from CD.

Project  
**PROPOSED MIXED USE DEVELOPMENT**

47-50 THE ESPLANADE ETTALONG BEACH  
Drawing Title  
**ROOF PLAN**

AMENDED SUBMISSION		
Job no.	Drawing no.	Rev.
J15304S2	DA 109	E
Drawn by	Checked by	Date
PY	JY	FEB 2017



BOUNDARY

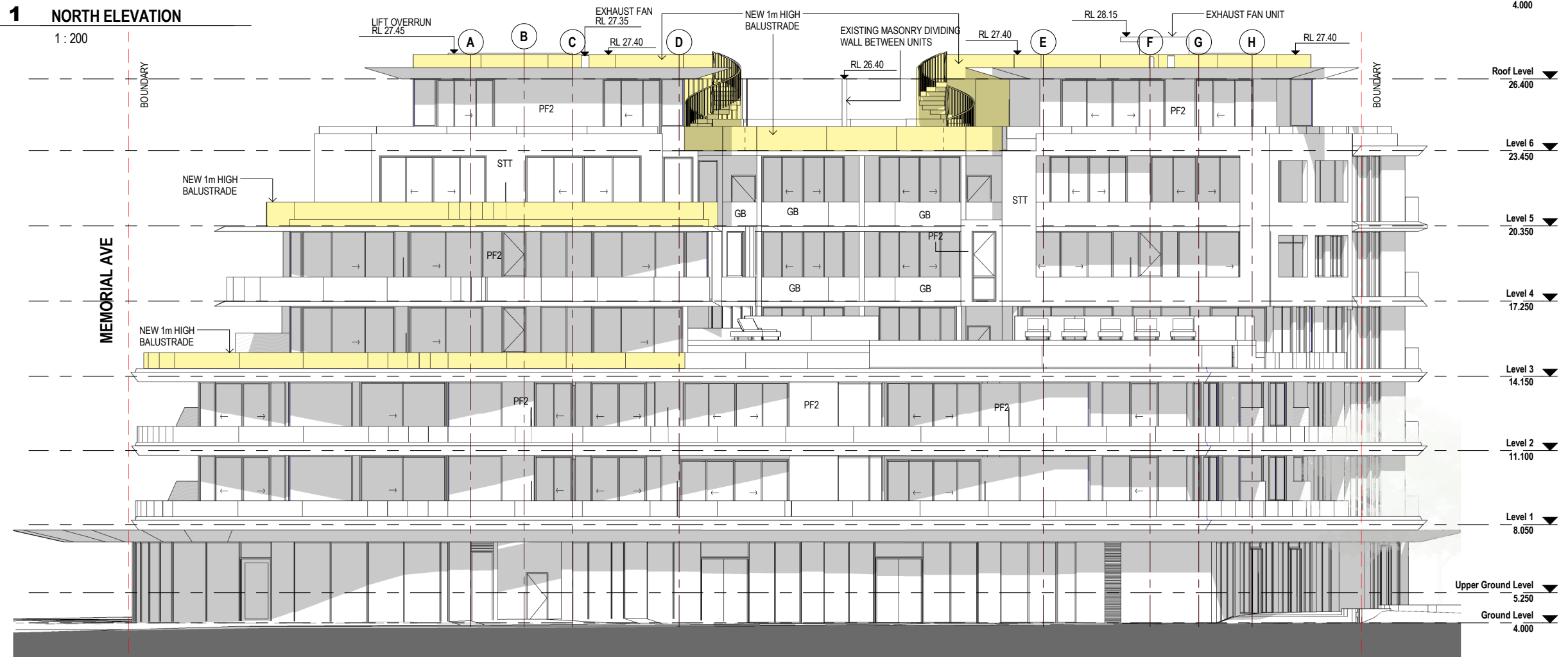


## 1 NORTH ELEVATION

1:200

BOUNDARY

MEMORIAL AVE



## 2 SOUTH ELEVATION

1:200

### REFERENCES

DRAWINGS TO BE READ IN CONJUNCTION WITH BUT NOT LIMITED TO ALL STRUCTURAL ENGINEERS, STORMWATER ENGINEERS, LANDSCAPE ARCHITECTS, AND OTHER ASSOCIATED PLANS & REPORTS

REFER TO THE BASIS REPORT FOR ADDITIONAL REQUIREMENTS TO THE ONES NOTED ON THE DRAWINGS.

### NOTES

ALL DIMENSIONS AND SETOUTS ARE TO BE VERIFIED ON SITE AND ALL OMISSIONS OR ANY DISCREPANCIES TO BE NOTIFIED TO THE ARCHITECT. FIGURED DIMENSIONS TO BE USED AT ALL TIME. DO NOT SCALE MEASUREMENTS OFF DRAWINGS.

### MATERIAL LEGEND

AAB	ANODISED ALUMINIUM BLADE
AVB	ALUMINIUM VERTICAL BLADE & AWNING
AWD	ALUMINIUM FRAME WINDOWS & DOORS - COLOUR 1
GB	SAFETY GLASS BALUSTRADE
PF1	MANABURN PAINT FINISH
PF2	CHARCOAL PAINT FINISH
STT	SANDSTONE TILED WALL

### PROPOSED AMENDMENTS

F	27.09.18	General Amendments
E	25.05.18	Plant room amended, tiled Terrace proposed
D	14.07.17	Additional Information
C	27.03.17	General Amendments
B	08.03.17	Lift overruns Shadow revised
A	16.02.17	Modification Submission

Rev.	Date	Description
1	26.09.2018	ADDITIONAL S75W AMENDMENTS 26.09.2018:
2	26.09.2018	NEW 1m HIGH BALUSTRADE PROVIDED ON LEVEL 6 AND ROOF LEVEL
3	26.09.2018	SPIRAL STAIRS PROVIDED IN TERRACE OF UNITS 601 & 602 AT LEVEL 6
4	26.09.2018	LINE OF BALUSTRADE TO UNIT 307 & 308 AMENDED AT LEVEL 3
5	26.09.2018	LINE OF BALUSTRADE TO UNIT 506 & 507 AMENDED AT LEVEL 5

- ADDITIONAL S75W AMENDMENTS 26.09.2018:
- NEW 1m HIGH BALUSTRADE PROVIDED ON LEVEL 6 AND ROOF LEVEL
- SPIRAL STAIRS PROVIDED IN TERRACE OF UNITS 601 & 602 AT LEVEL 6
- LINE OF BALUSTRADE TO UNIT 307 & 308 AMENDED AT LEVEL 3
- LINE OF BALUSTRADE TO UNIT 506 & 507 AMENDED AT LEVEL 5

Project Architect

CDARCHITECTS

LEVEL 2, 60 PARK STREET  
SYDNEY NSW 2000  
P: 02 9267 2000  
W: www.cdarchitects.com.au

© Copyright

The copyright of this drawing together with any other documents prepared by charnie design (CD) remains the property of CD. CD grants licence for the use of this document for the purpose for which it is intended. The licence is not transferable without permission from CD.

Project

PROPOSED MIXED USE DEVELOPMENT

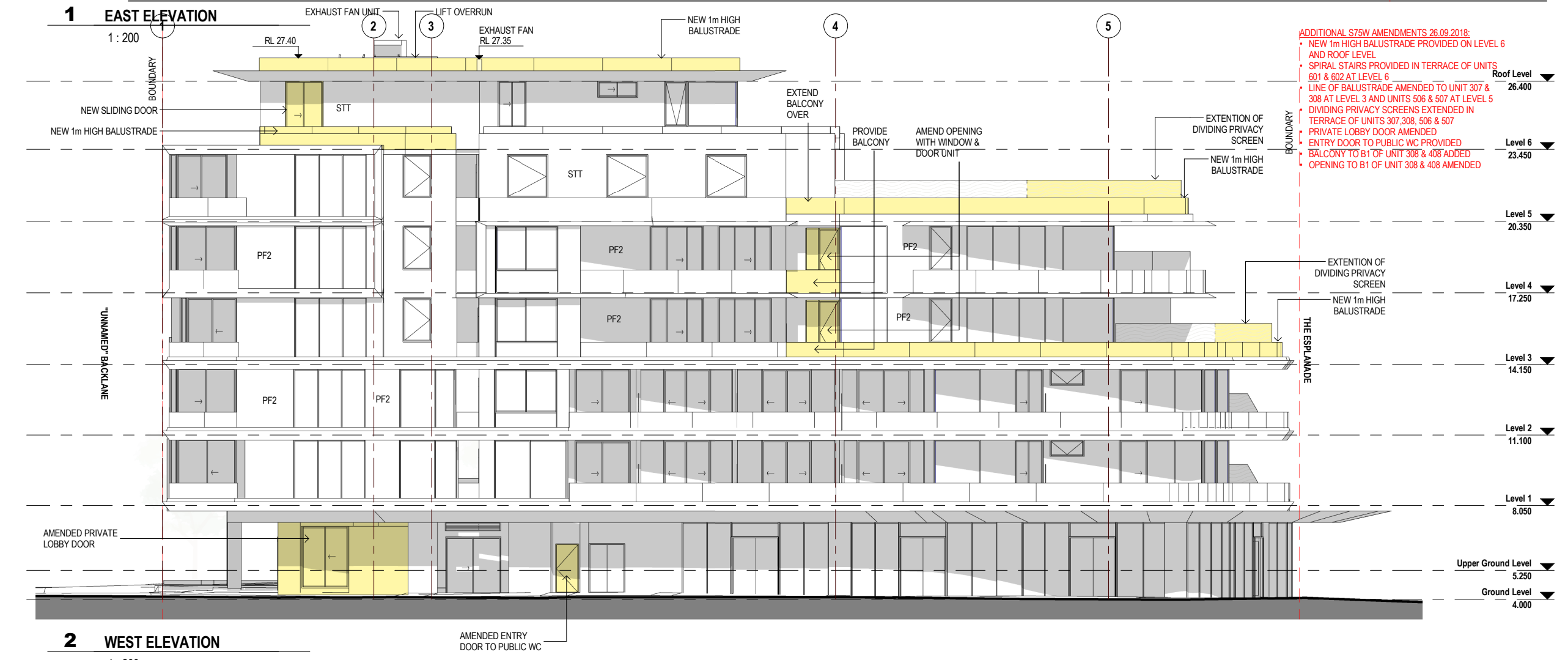
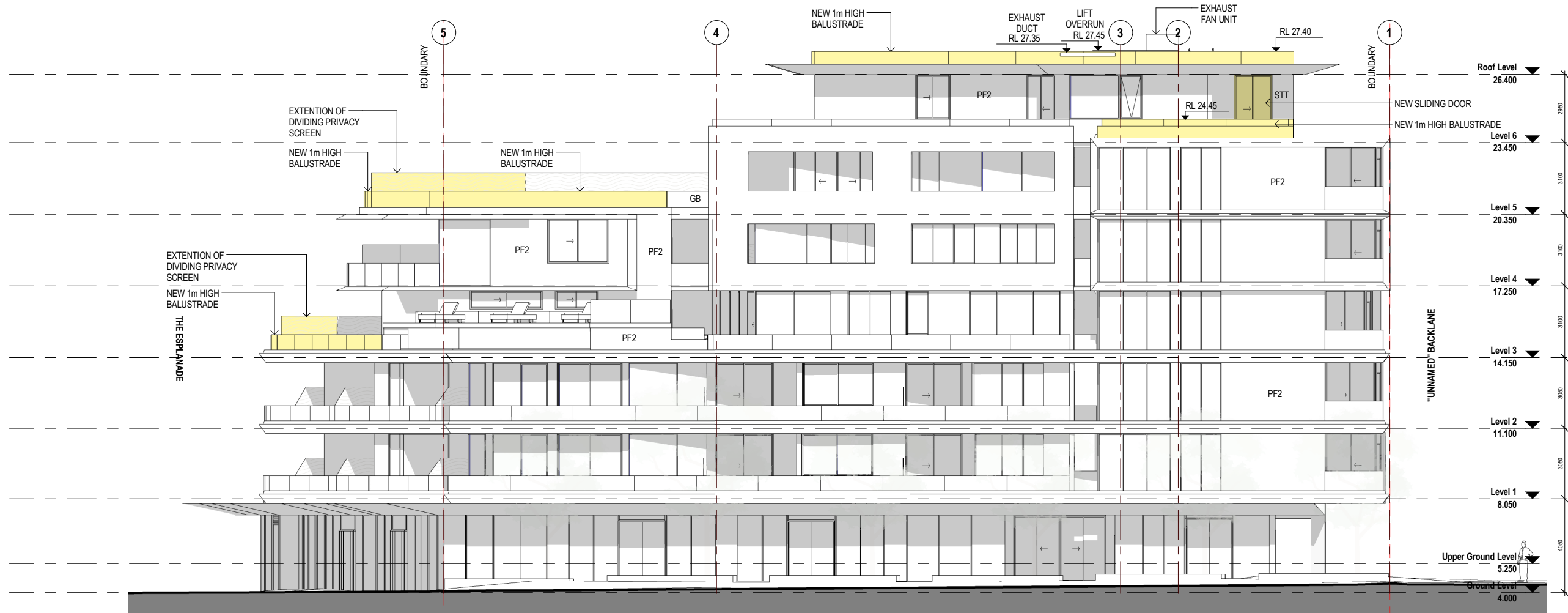
47-50 THE ESPLANADE ETTALONG BEACH

Drawing Title  
NORTH & SOUTH  
ELEVATIONS

### AMENDED SUBMISSION

Job no.	Drawing no.	Rev.
J15304S2	DA 200	F
Drawn by	Checked by	Date
PY	ZC	FEB 2017





REFERENCES

DRAWINGS TO BE READ IN CONJUNCTION WITH BUT NOT LIMITED TO ALL STRUCTURAL ENGINEERS, STORMWATER ENGINEERS, LANDSCAPE ARCHITECTS, AND OTHER ASSOCIATED PLANS & REPORTS

REFER TO THE BASIS REPORT FOR ADDITIONAL REQUIREMENTS TO THE ONES NOTED ON THE DRAWINGS.

NOTES

ALL DIMENSIONS AND SETOUTS ARE TO BE VERIFIED ON SITE AND ALL OMISSIONS OR ANY DISCREPANCIES TO BE NOTIFIED TO THE ARCHITECT. FIGURED DIMENSIONS TO BE USED AT ALL TIME. DO NOT SCALE MEASUREMENTS OFF DRAWINGS.

MATERIAL LEGEND

AAB	ANODISED ALUMINIUM BLADE
AVB	ALUMINIUM VERTICAL BLADE & AWNING
AWD	ALUMINIUM FRAME WINDOWS & DOORS - COLOUR 1
GB	SAFETY GLASS BALUSTRADE
PF1	MANABURN PAINT FINISH
PF2	CHARCOAL PAINT FINISH
STT	SANDSTONE TILED WALL
	PROPOSED AMENDMENTS

E	27.09.18	General Amendments
D	14.07.17	Additional Information
C	27.03.17	General Amendments
B	08.03.17	Lift overruns Shadow revised
A	16.02.17	Modification Submission
Rev.	Date	Description
Scale	0 2 4 6 8	1:200

Project Architect

DDA  
CDARCHITECTS

LEVEL 2, 60 PARK STREET  
SYDNEY NSW 2000  
P: 02 9267 2000  
W: www.cdarchitects.com.au

© Copyright

The copyright of this drawing together with any other documents prepared by charnie design (CD) remains the property of CD. CD grants licence for the use of this document for the purpose for which it is intended. The licence is not transferable without permission from CD.

Project  
PROPOSED MIXED USE DEVELOPMENT

47-50 THE ESPRANADE ETTALONG BEACH  
Drawing Title  
EAST & WEST  
ELEVATIONS

AMENDED SUBMISSION		
Job no.	Drawing no.	Rev.
J15304S2	DA 201	E
Drawn by	Checked by	Date
PY	JY	FEB 197

REFERENCES

DRAWINGS TO BE READ IN CONJUNCTION WITH BUT NOT LIMITED TO ALL STRUCTURAL ENGINEERS, STORMWATER ENGINEERS, LANDSCAPE ARCHITECTS, AND OTHER ASSOCIATED PLANS & REPORTS

REFER TO THE BASIS REPORT FOR ADDITIONAL REQUIREMENTS TO THE ONES NOTED ON THE DRAWINGS.

NOTES

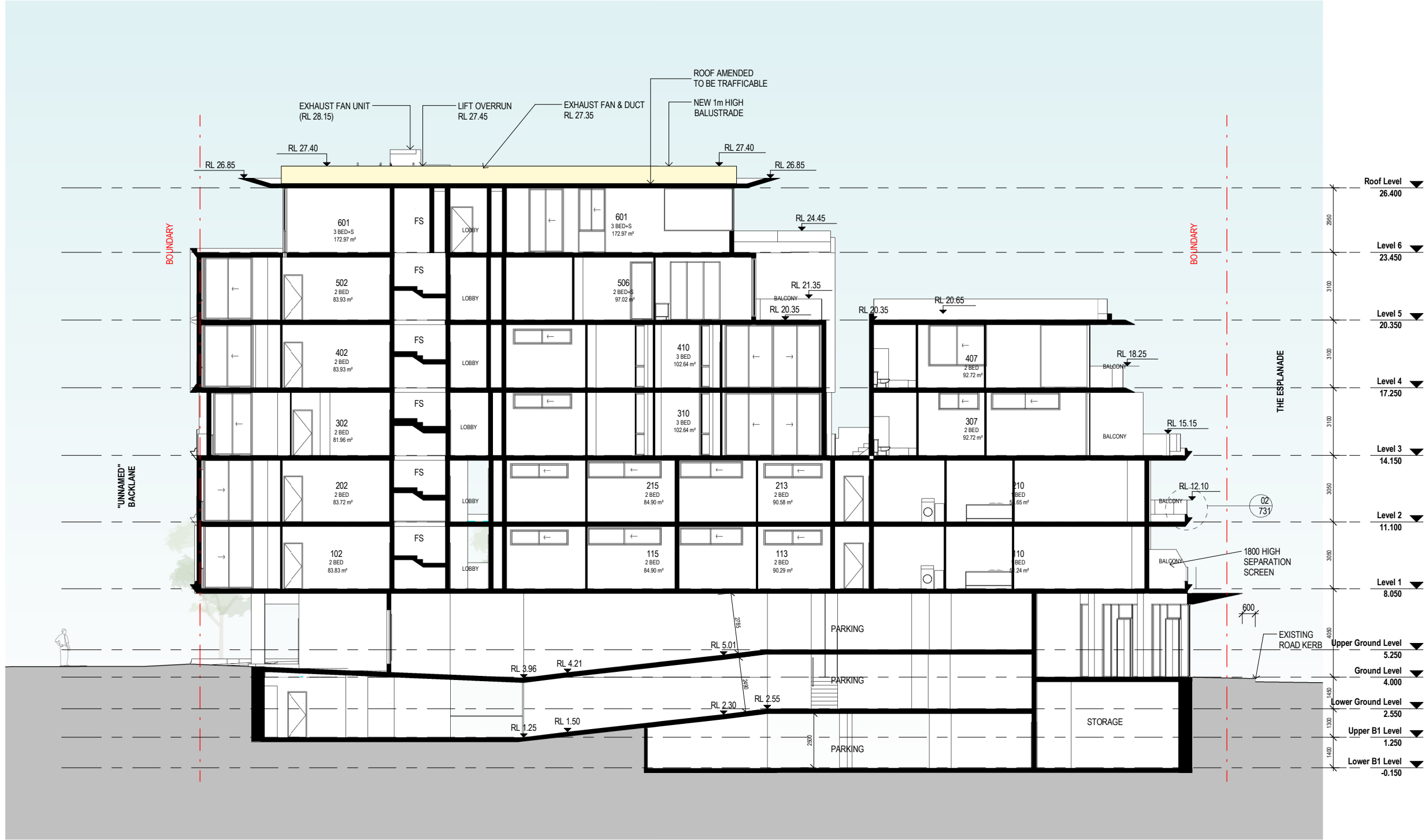
ALL DIMENSIONS AND SETOUTS ARE TO BE VERIFIED ON SITE AND ALL OMISSIONS OR ANY DISCREPANCIES TO BE NOTIFIED TO THE ARCHITECT.

FIGURED DIMENSIONS TO BE USED AT ALL TIME.

DO NOT SCALE MEASUREMENTS OFF DRAWINGS.

ADDITIONAL S75W AMENDMENTS 26.09.2018:

- NEW 1m HIGH BALUSTRADE PROVIDED ON ROOF LEVEL
- ROOF AMENDED TO BE TRAFFICABLE



Rev.	Date	Description
D	27.09.18	General Amendments
C	14.07.17	Additional Information
B	08.03.17	Lift overruns Shadow revised
A	16.02.17	Modification Submission

Scale  
m 0 2 4 6 8  
1:200

Project Architect

CDARCHITECTS

LEVEL 2, 60 PARK STREET  
SYDNEY NSW 2000  
P: 02 9267 2000  
W: www.cdarchitects.com.au

© Copyright

The copyright of this drawing together with any other documents prepared by charnie design (CD) remains the property of CD. CD grants licence for the use of this document for the purpose for which it is intended. The licence is not transferable without permission from CD.

Project  
PROPOSED MIXED USE DEVELOPMENT

47-50 THE ESPLANADE ETTALONG BEACH  
Drawing Title  
SECTION A

AMENDED SUBMISSION		
Job no.	Drawing no.	Rev.
J15304S2	DA 300	D
Drawn by	Checked by	Date
PY	ZC	FEB 2017

1 SECTION A  
1:200