

APPENDIX C – ECO LOGICAL AUSTRALIA TABLE

Table 1: National Environmental Significance Impacts and Offset Areas

Proposed Boco Rock Windfram Matters of NES revised impacts and offset package

			125 Turbine layout				122 Turbines	Area of mapped habitat on Potential offset Properties					Meets Requirements	
Biobanking vegetation Type	Matters of NES	Mapped habitat in Study Area (ha) <sup>#</sup>	Impact Area 6 m layout (Perm + Temp)	Impact Area 12 m layout (Perm + Temp)	Offset Required (Biobanking) 12 m layout *	Proposed Offset Area in Exhibition Documents**	Revised Impact Area 12 m layout (Perm + Temp)	Rolfe	Haylock	Bridgewater	Total	Offset Ratio (Offset:Impact)	DECCW (Biobanking)	DEWHA (5:1)
Kangaroo Grass	Natural Temperate Grassland	4000-6000	9	11.8	27.7-39.6		11.8							
Spear Grass			51.6	64.2	177.7-253.9		61.5							
River Tussock			1.2	1.6	2.0-2.9		1.6							
Sub-total			61.8	77.6	207.4-296.4	500	74.9	504	107.63	177.22	788.85	10.53	Yes	Yes
Snow Gum -Candlebark Woodland	N/A		0	0	8.6-12.3	0	0							N/A
Derived Grassland (SGCB)	N/A		2.1	2.7			2.7							N/A
Ribbon Gum-Snow Gum Open Forest	N/A		42.7	51.5	283.0-404.3	0	51.5			43.03	43.03	0.84	No	N/A
RGSg (Biometric Low)	N/A		14.6	17.4			17.4							N/A
Derived Grassland (RBSG)	N/A		22.7	27.8			27.8							N/A
Montane Lake	N/A		0	0			0	2	2.43	0	4.43			N/A
Total			143.9	177	499.1-713.0	500	174.3	506	110.06	220.25	836.31			
					579-828									

# Includes habitat subsequently mapped on offset sites (Rolfe) and Travelling Stock Reserves as shown in revised overview maps

\*Calculations based on "worst case scenario". Range includes whether Biobank site is in "moderate" or "benchmark" condition. Offset area required for site in moderate condition is significantly less as it has greater capacity to improve.

\*\* Option 2 where offset proposed consists of all NTG and GED/SLL habitat

			125 Turbine layout				122 Turbines	Area in Potential offsets					Meets Requirements	
Threatened Species	Matters of NES	Mapped Habitat <sup>#</sup>	Impact Area 6 m layout (Perm + Temp)	Impact Area 12 m layout (Perm + Temp)	Offset Required (Biobanking) 12m layout *	Proposed Offset Area in Exhibition Documents**	Revised Impact Area 12 m layout (Perm + Temp)	Rolfe	Haylock	Bridgewater	Total	Offset Ratio (Offset:Impact)	DECCW (Biobanking)	DEWHA
Grassland Earless Dragon	Grassland Earless Dragon													
Confirmed habitat (Recorded)		160 + 440	4.7	5.6			2.9	150	19.41	0	169.41	58.42	Yes	?
Likely (High Potential)		2200 + 1500	53.7	67			67	354	80.48	205.44	639.92	9.55	Yes	?
Potential (Low Potential)		1650	25.6	31			31	0	0	10.44	10.44	0.34	Yes	?
Total		4010-5950	84	103.6	230-1396 (750 <sup>^</sup> )	500	100.9	504	99.89	215.88	819.77	8.12	Yes	?
Striped Legless Lizard	Striped Legless Lizard	5000-6000	95.49	119.89	499.5	500	117.19	504	110	220.25	834.25	7.12	Yes	Yes
Little Whip Snake	N/A	6350	159.36	198.7	N/A	500	196	504	110	220.25	834.25	4.26	Yes	N/A

# Includes habitat subsequently mapped on offset sites (Rolfe) and Travelling Stock Reserves as shown in revised overview maps

\*Calculations based on "worst case scenario" i.e. 12 metre road layout, all impacts, permanent and temporary combined.

\*\* Option 2 where offset proposed consists of all NTG and GED/SLL habitat

<sup>^</sup> Biobanking calculation with GED Tg score of 0.75 required 1,396 credits or an estimated 232 ha, DECCW proposed revised Tg score of 0.125 requires 8,378 credits or an estimated 1,396ha. Negotiated agreement with DECCW of 750 ha.

APPENDIX D – REVISED FIGURES

Figure 3.1A: Boco Rock Wind Farm, Layout Option 1 and 2

Figure 3.3A: Springfield and Yandra Clusters, Layout Option 1 and 2

Figure 3.7A: Boco Rock Wind Farm and Potential Transmission Line

Figure 3.8: Boco Rock Wind Farm and Uninhabited Dwelling from Submission 15



FIGURE 3.1A: BOCO ROCK WIND FARM, LAYOUT OPTION 1 AND 2

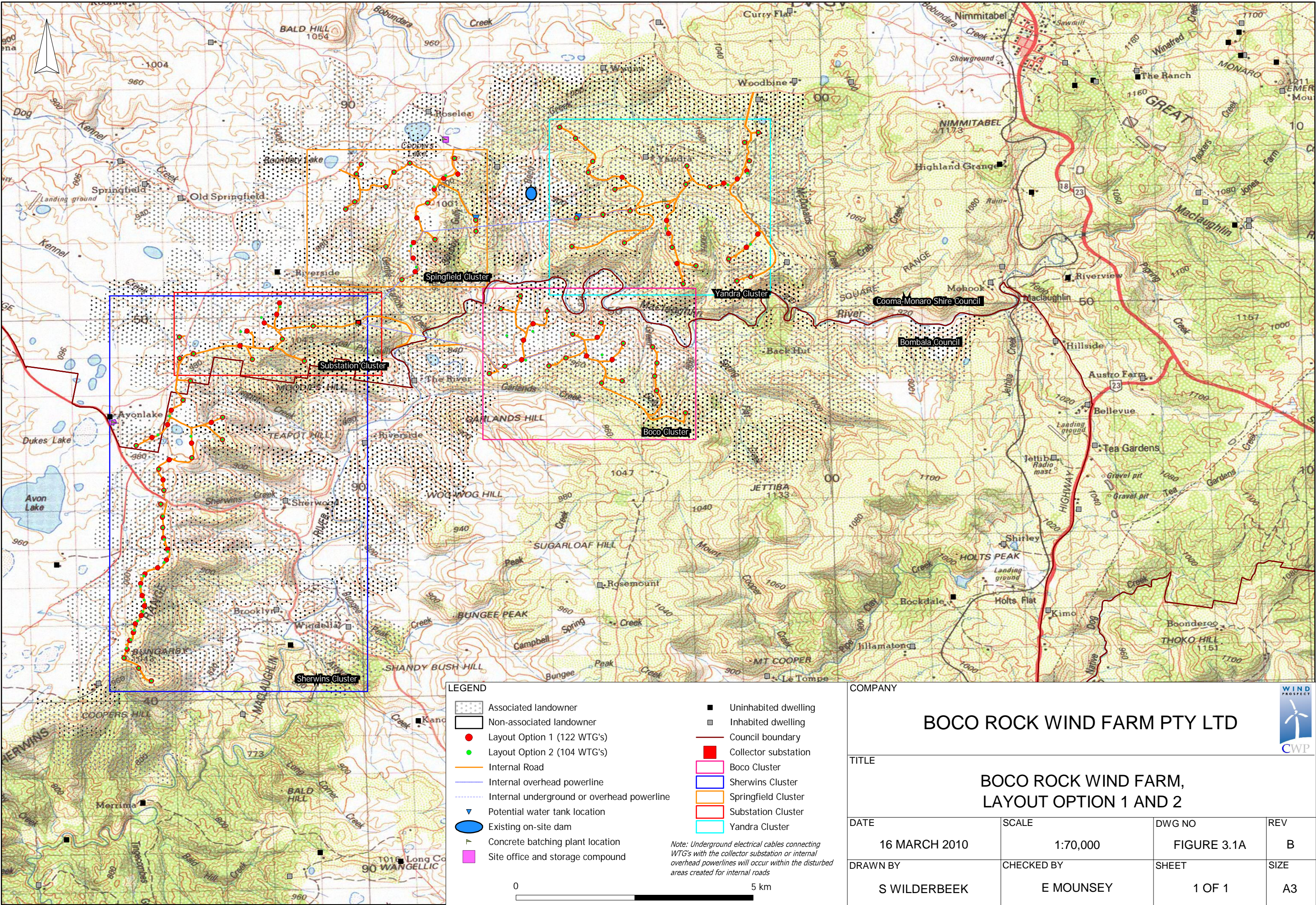




FIGURE 3.3A: SPRINGFIELD AND YANDRA CLUSTERS, LAYOUT OPTION 1 AND 2

