
Proposed Development of
Boco Rock Wind Farm
South-Eastern, New South Wales



Preferred Project Report
and Response to Submissions

Volume 2

April 2010

Prepared for Boco Rock Wind Farm Pty Ltd by Wind Prospect CWP Pty Ltd

APPENDIX B – ECO LOGICAL AUSTRALIA FIGURES

Figure 1: Impacts to GED Habitat – Springfield Cluster (As Exhibited)

Figure 2: Revised Impacts to GED Habitat – Springfield Cluster

Figure 3A: Potential Offsets – Grassland Earless Dragon Habitat

Figure 3B: Potential Offsets – Grassland Earless Dragon Habitat

Figure 4: Potential Offset Site Options – Rolfe Property

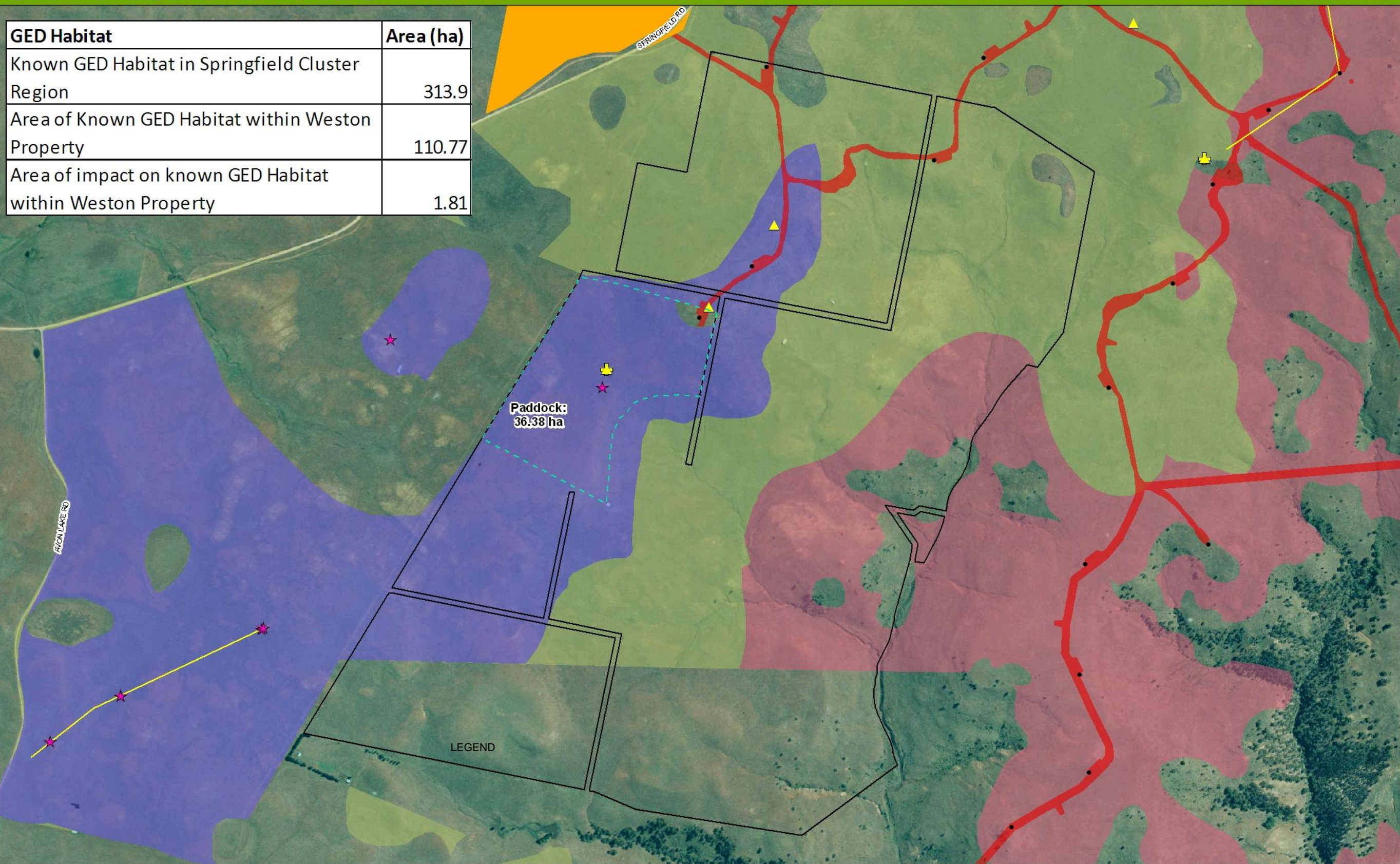
Figure 5: Haylock Property: Grassland Earless Dragon

Figure 6: Bridgewater Property: Grassland Earless Dragon

Figure 7: Proposed Road Alignment in the Yandra Cluster

Figure 2- Revised Impacts to GED Habitat- Springfield Cluster

GED Habitat	Area (ha)
Known GED Habitat in Springfield Cluster Region	313.9
Area of Known GED Habitat within Weston Property	110.77
Area of impact on known GED Habitat within Weston Property	1.81



Legend

- Turbine Locations
- Weston Property
- Paddock
- Revised 12m Impact Area (Roads, Turbine Pads & Earthworks)
- Travelling Stock Reserve

Revised Grassland Earless Dragon Habitat

- ★ Grassland Earless Dragon Records
- Known Grassland Earless Dragon Habitat
- High Potential Grassland Earless Dragon Habitat
- Low Potential Grassland Earless Dragon Habitat

Surveys

- ★ Funnel Trap
- ★ Rock Rolling
- ★ Tiles
- Dragon Surveys (Spider Tubes)

0 0.25 0.5 1

Kilometers

N

eco logical
AUSTRALIA
www.ecoaus.com.au

Datum/Projection: GDA 1994 MGA Zone 56

Prepared by: DJ Status: Draft Date: 19/03/2010

