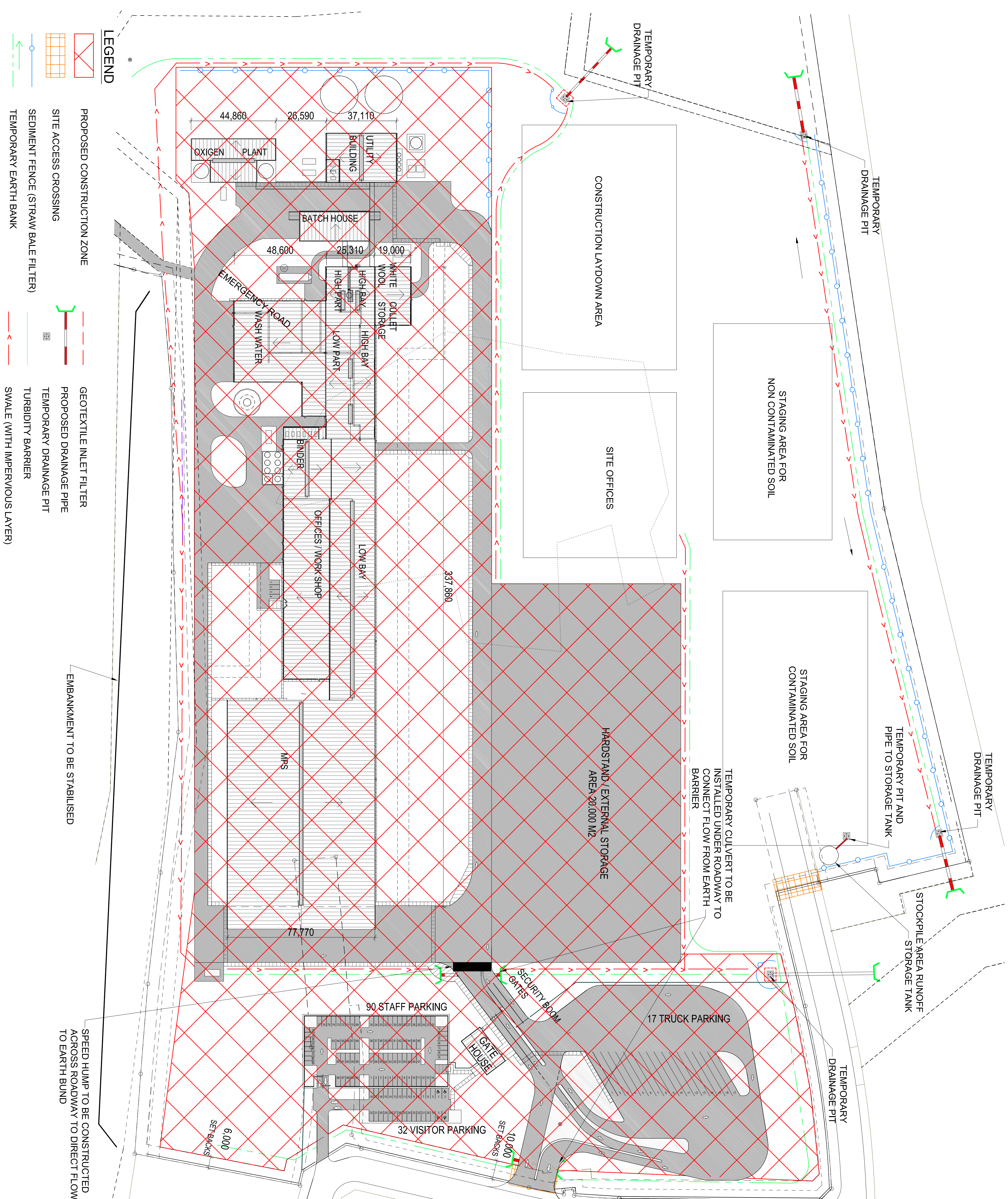


- NOTES:

1. PREPARATION OF PROGRESSIVE EROSION AND SEDIMENT CONTROL PLANS (ESPPs) FOR ALL STAGES OF THE PROJECT AND FOR SPECIFIC AREAS WITH A HIGH EROSION HAZARD. ESPPs ARE TO BE PREPARED PRIOR TO COMMENCEMENT OF CONSTRUCTION AND WILL IDENTIFY TEMPORARY CONTROLS INCLUDING SILT FENCES, DIVERSION DRAINS, TEMPORARY SURFACE AND DRAINAGE LININGS, ETC.
2. ALL CONTROL MEASURES TO BE INSTALLED PRIOR TO SITE DISTURBANCE
3. CONSTRUCTION ZONES TO BE BROKEN DOWN INTO SMALLER CONSTRUCTION SUB-CATCHMENTS TO ALLOW SMALLER TEMPORARY SEDIMENTATION STRUCTURES;
4. EXISTING PITS AT THE CONSTRUCTION INTERFACES TO BE PROTECTED FROM SILTED RUNOFF;
5. CONTROL MEASURES LOCATED ON EXISTING ROADWAYS ARE NOT TO ENCRATCH ON THE TRAFFICABLE LANES AND SHOULD BE CLEARLY IDENTIFIABLE DURING BOTH DAY AND NIGHT.
6. VEHICLE ACCESS TO THE SITE SHALL BE CONTROLLED THROUGH STABILISED ACCESS POINTS. VEHICLES NOT REQUIRED IN THE PERFORMANCE OF WORKS SHALL BE PARKED OFFSITE AWAY FROM DISTURBED AREAS.
7. LIMITING VEGETATION CLEARING TO THE MINIMUM REQUIRED SO AS TO MINIMISE SOIL SURFACE EXPOSURE.
8. CONSERVING CUT MATERIAL BY STRIPPING AND RETAINING IN STABILISED STOCKPILES FOR FUTURE REVEGETATION. TOPSOIL STOCKPILES ARE TO BE LESS THAN TWO (2) METERS IN HEIGHT AND STABILISED WITHIN TEN (10) DAYS OF COMPLETING THE STOCKPILE.
9. ALL STOCKPILES ARE TO BE PLACED AT LEAST TWO (2) METERS CLEAR OF EXISTING VEGETATION, CONCENTRATED WATER FLOW, ROADS AND HAZARD AREAS
10. DRAINAGE INLET PROTECTION TO BE PROVIDED FROM THE COMMENCEMENT OF EXCAVATION. CONTROLS TO BE REVISED FOLLOWING COMPLETION OF PIT.
11. INTERCEPTING OFFSITE SURFACE FLOW AND DIVERTING OR ALLOWING THROUGH THE EXISTING AND/OR NEWLY CONSTRUCTED PIPES OR CULVERTS WITHOUT MIXING WITH CONSTRUCTION RUNOFF.
12. STABILISING FLOW SURFACES OF CATCH DRAINS AND OUTLETS AGAINST EROSION.
13. IN SECTIONS OF CONSTRUCTION SITES WITH HIGH RUNOFF, REDUCING FLOW VELOCITIES WITH APPROPRIATE MEASURES (E.G. CHECK DAMS) AND DIVERTING TO STABLE LOCATIONS (E.G. GRASSED VERGES).
14. SEDIMENT TRAPS/FENCES OR EQUIVALENT TO BE USED. FILTER RUNOFF FROM SMALL ISOLATED CONSTRUCTION AREAS BEFORE DISCHARGING TO DRAINAGE CHANNELS OR NATURAL WATERCOURSES.
15. A TURF FILTER STRIP (400MM MIN WIDTH) TO BE PROVIDED BEHIND KERB AND GUTTERING.
16. ALL CONTROL MEASURES ARE TO BE REGULARLY MAINTAINED WITH ACCUMULATED SEDIMENT FROM SUCH DEVICES BEING REMOVED BEFORE 30% CAPACITY IS USED. THE CONTROL MEASURES SHALL BE MAINTAINED UNTIL SUCH AS THE DISTURBED AREAS HAVE BEEN REHABILITATED.
17. PROGRESSIVE STABILISATION OF DISTURBED AND BARE AREAS SUCH AS VEGETATION OR SOIL BINDER TECHNIQUES. AREAS TO BE ASSESSED FOR STABILISATION INCLUDE TEMPORARY STOCKPILES, VERGES AND BATTERS AS THEY ARE COMPLETED.
18. DISTURBED AREAS SHALL NOT REMAIN DENUDE FOR A PERIOD LONGER THAN 20 DAYS.
19. PUBLIC ROADS ARE TO BE SWEEP FREE OF DEBRIS RESULTING FROM CONSTRUCTION ACTIVITIES AT A MINIMUM OF TWICE WEEKLY.
20. INSPECTING ALL CONTROL MEASURES REGULARLY AND AFTER RAINFALL EVENTS FOR STRUCTURAL DAMAGE AND PROVIDING MAINTENANCE AND REPAIRS AS NECESSARY (E.G. SEDIMENT FENCES, DRAINS, SEDIMENT TRAPS, ETC).
21. PREPARING FOR RAINFALL EVENTS BY ENSURING THE FUNCTIONALITY AND CAPACITY OF CONTROL MEASURES. PROVIDING ADDITIONAL CONTROLS WHERE REQUIRED. STABILISING BARE GROUND AND TEMPORARY STOCKPILES, AND AVOIDING ADDITIONAL GROUND DISTURBANCE.
22. ALL CONTROL MEASURES ARE TO BE CONSTRUCTED ACCORDING TO THE REQUIREMENTS OF "MANAGING URBAN STORMWATER: SOILS AND CONSTRUCTION" - 4TH ED. (LANDCOM MARCH 2004).

[illegible]