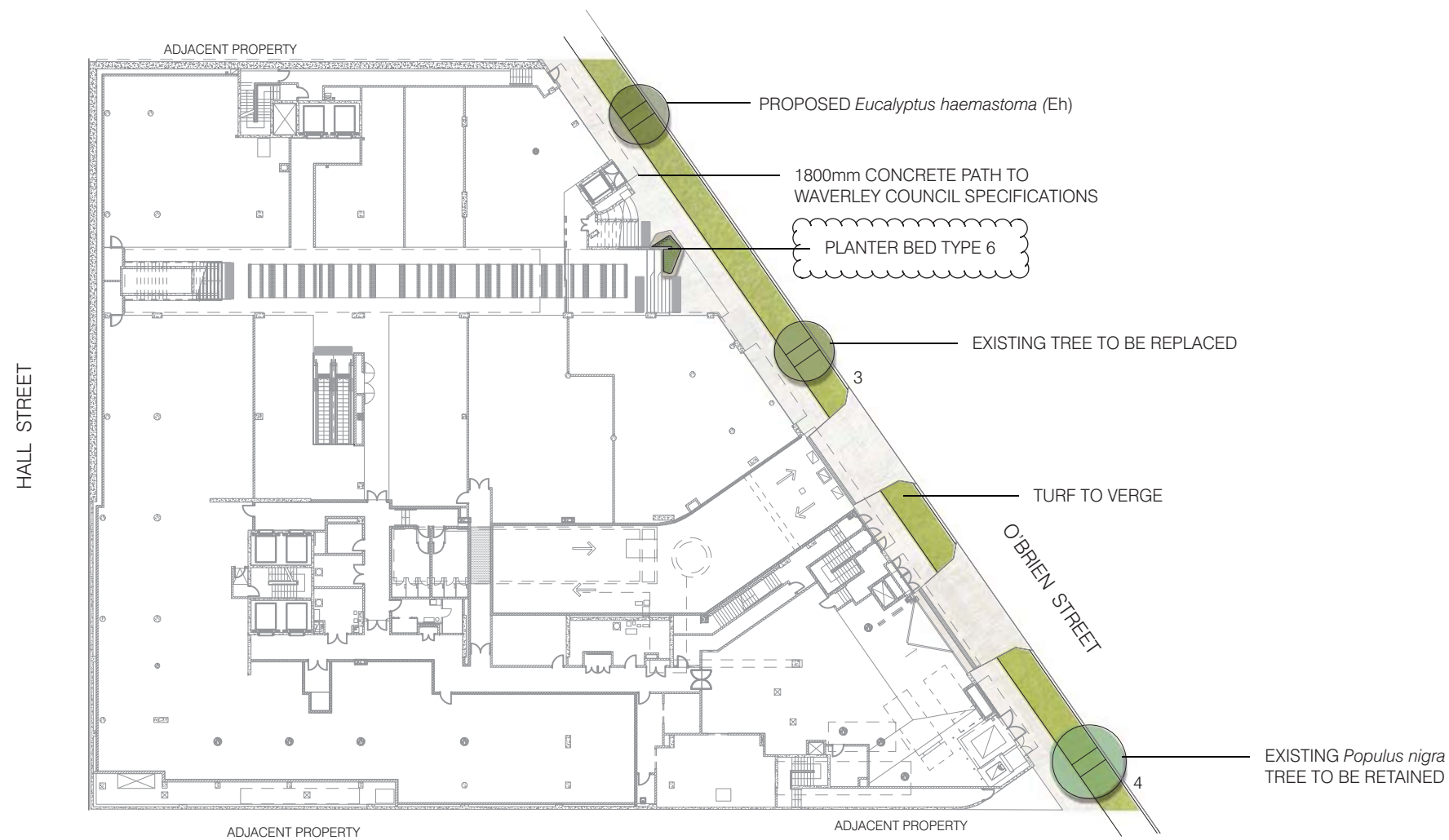


61 HALL STREET BONDI

Landscape Design Application

April 2012





PROPOSED TREE: *Eucalyptus haemastoma*



DESIGN INTENT
Low use residential street with large sized evergreen tree. Evergreen tree will provide year round canopy and reflect the adjacent existing planting.

PLANTING SCHEDULE

TREES					
SYMBOL	BOTANICAL NAME	COMMON NAME	MATURE HEIGHT	POT SIZE	NUMBER
Eh	<i>Eucalyptus haemastoma</i>	Scribbly gum	20m	400L	2

EXISTING LANDSCAPE



TYPICAL O'BRIEN STREET CONDITION

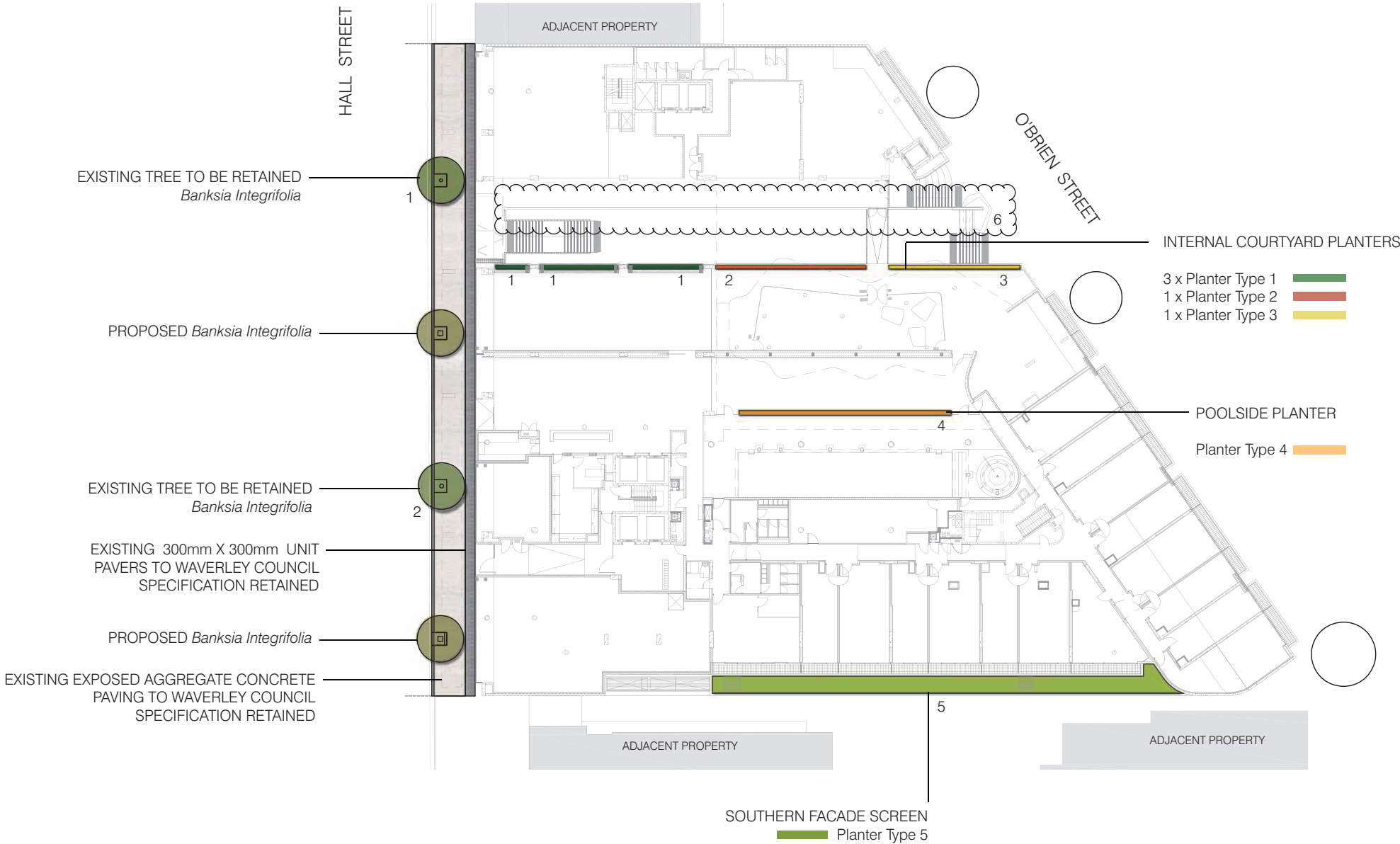
EXISTING TREES



EXISTING TREE 3
Casuarina equisetifolia



EXISTING TREE 4
Populus nigra



STREET TREE DESIGN CONSIDERATIONS

- Under the architectural awning proposal, the existing trees may require removal.
- Removal will enable rationalisation of the public domain and allow the inclusion of new, healthy trees. New planting pits with provision of new soils, aeration coils etc will assist long term tree health.
- Banksia integrifolia is a mid storey tree with gnarled and twisted branches between 2 and 8m height. The species also produces large fruit pods that could drop onto the awning. Replacement species should be considered.
- Turf Design recommend that a species which can attain a clear stem height above the awning is used. Alternatively a species with a narrow upright crown where only small branches or foliage would contact the awning could be used. Potential species include:
 1. *Hymenosporum flavum*,
 2. *Elaeocarpus reticulatus*,
 3. *Diploglottis australis*,
 4. *Livistona australis* (Palm)
 5. *Pyrus callieriana* 'Bradford'
- It is likely that all species will require pruning works to address potential awning conflicts.

EXISTING TREES



EXISTING TREE 1
Banksia Integrifolia



EXISTING TREE 2
Banksia Integrifolia

EXISTING LANDSCAPE



EXISTING WAVERLEY COUNCIL PAVING TO
HALL STREET



Diploglottis australis in Surrey Hills



- PLANTING DESIGN PRINCIPLES**
- Develop a rich planting character of lush green 'hanging gardens'.
 - Incorporate plant species with complimentary colours and textures.
 - Use plants that are hardy to the proposed conditions from hot midday sun through to deep shade.
 - Use plants that have appropriate size and form for their location.
 - Use plants with variegation to lighten and soften the planting effect.

Precedent -
Fraser's Broadway Marketing Suite

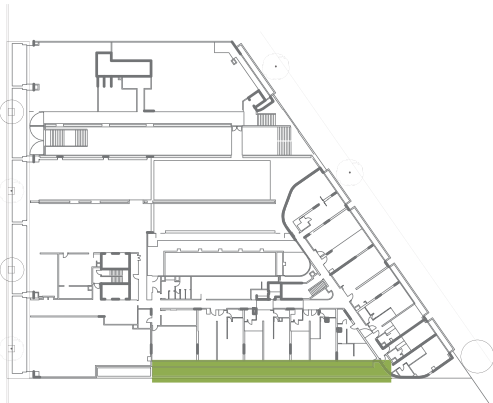
PLANTER TYPE 5

The G-PB5 planter is located along the south eastern boundary. It is largely hidden by architectural screening and needs to be robust and self supporting. Being adjacent the building, and with the potential of future development, the garden area will be largely shaded with reflected light.

The plant bed has varying soil depths. The shallow soil profile area (approx. 400mm) will contain the robust *Aspidistra elatior* (Cast Iron Plant). This is a low growing, tough hardy plant. The shallower soil profile necessitates the inclusion of a smaller plant type. The deeper soil profiles will incorporate Palms and Cordylines that can attain a height of up to 2m. This will provide a lush green backdrop behind the architectural panelling.

SYMBOL	BOTANICAL NAME	COMMON NAME	MATURE HEIGHT	POT SIZE	NUMBER
Re	Raphis excelsa	Raphis palm	2.5 - 3m	300mm	18
Aev	Aspidistra elatior 'Variegata'	Cast Iron Plant	1m	200mm	125
Cs	Chamaedorea sefrizii	Bamboo Palm	2m	300mm	18
Cg	Cordyline glauca	Green Ti Plant	1m	200mm	18

Planting type 5



Raphis excelsa



Chamaedorea sefrizii



Cordyline stricta 'Glaucous'



Aspidistra elatior 'Variegata'

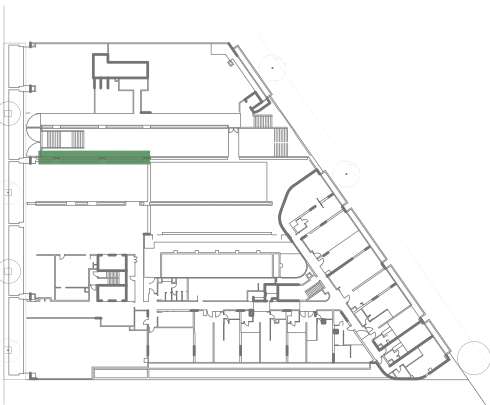
Ground Level - Planting
Planting type 1



PLANTER TYPE 1

The G-PB1 planters are located within a difficult area for growing plants. There is minimal overhead light, only that provided by internal lighting systems. The recommended species are chosen for their hardiness to low light reducing the effects of phototropism. Additionally, the location of operable windows and counter-top seating requires low plant forms to prevent annoying maintenance and reduction in human nuisance.

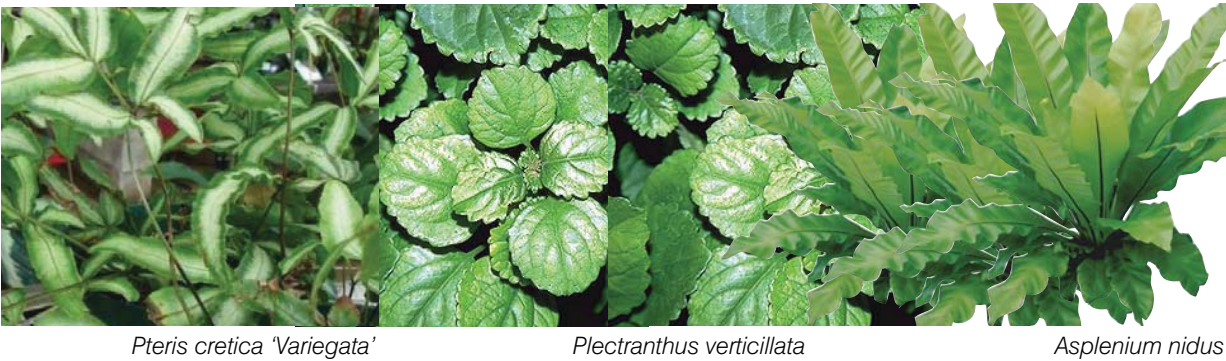
SYMBOL	BOTANICAL NAME	COMMON NAME	MATURE HEIGHT	POT SIZE	NUMBER
Vm	Vinca Major	Periwinkle	0.5m	150mm	55
Cc	Clorophytum comosum	Spider Plant	0.5m	150mm	55
Pv	Plectranthus verticillata	Swedish Ivy	0.5m	150mm	50



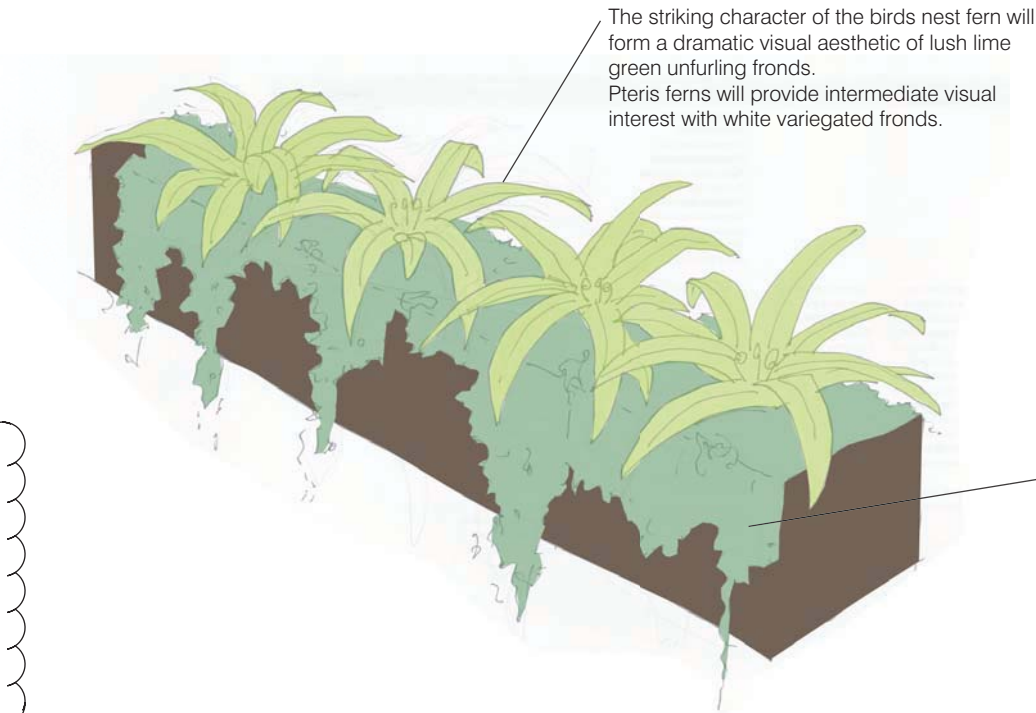
Planting type 2

PLANTER TYPE 2

The G-PB2 planters are located outside of the covered retail link. Greater ambient light will be received. This is reflected in alteration of the species, though still part of the overall homogenous plant palette.

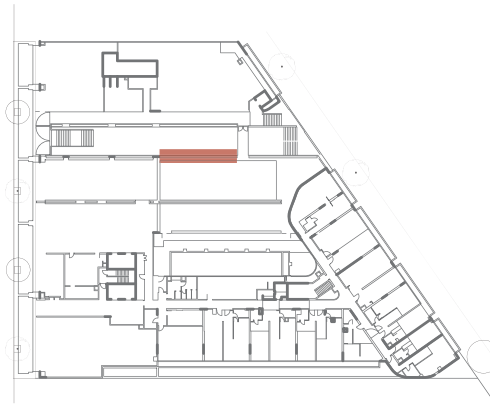


SYMBOL	BOTANICAL NAME	COMMON NAME	MATURE HEIGHT	POT SIZE	NUMBER
An	Asplenium nidus	Bird's nest fern	0.3 - 0.6m	200mm	56
Pv	Plectranthus verticillata	Swedish Ivy	0.5m	150mm	56
Pcv	Pteris cretica 'Variegated'	Variegated Table Fern	0.5m	150mm	56



The striking character of the birds nest fern will form a dramatic visual aesthetic of lush lime green unfurling fronds. Pteris ferns will provide intermediate visual interest with white variegated fronds.

The groundcover of Swedish Ivy will cover the planter and trail over providing a rich 'hanging garden' aesthetic.



Planting type 3

PLANTER TYPE 3

The G-PB3 planter is located at the northern entry off O'brien street. The planter will be very visible from the street and establish a welcoming visual cue for the internal public and private courtyards.

For this reason a double cascade is recommended. Nephrolepis ferns will drape over the planter to a length of around 600mm. The Swedish Ivy (Plectranthus) will cascade to around 2m, doubling the cascading effect. The Philodendrons will provide a striking vibrant green form echoing the overall planting character.

SYMBOL	BOTANICAL NAME	COMMON NAME	MATURE HEIGHT	POT SIZE	NUMBER
Pv	Plectranthus verticillata	Swedish Ivy	0.5m	150mm	24
Nc	Nephrolepis cordifolia	Fishbone fern	0.5m	200mm	24
Plg	Philodendron 'Imperial Green'	Philodendron Green	1m	200mm	24



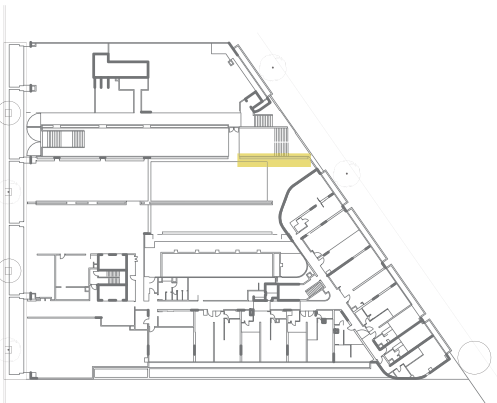
Plectranthus verticillata



Nephrolepis cordifolia



Philodendron 'Imperial Green'

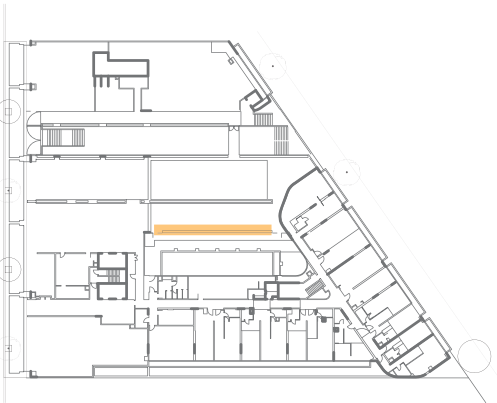


Planting type 4

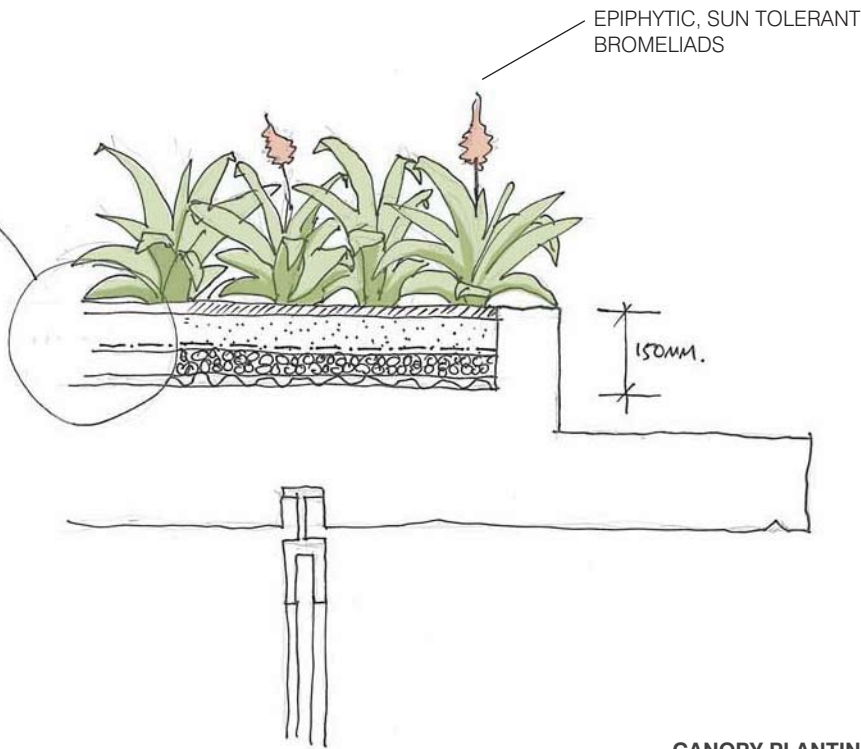
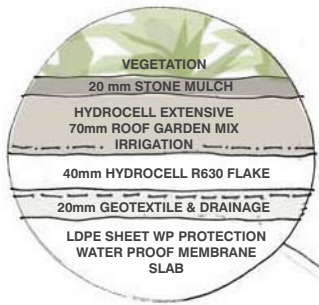
PLANTER TYPE 3

The G-PB4 planter is located along the pool area boundary fence. The boundary fence comprises glass panelling. To avoid an unsightly appearance of plants pushing up against the glass, smaller, soft stemmed species are recommended. To continue the hanging gardens theme the creeping native violet will be included to soften the planter edges.

SYMBOL	BOTANICAL NAME	COMMON NAME	MATURE HEIGHT	POT SIZE	NUMBER
Pcv	Pteris cretica 'Variegated'	Variegated Table Fern	0.5m	150mm	40
Lg	Liriope gigantea	Giant Turf Lilly	0.5m	150mm	40
Vh	Viola hederacea	Native Violet	0.1m	150mm	40



Level 1 - Canopy Garden



CANOPY PLANTING

Sun tolerant, epiphytic Bromeliads have been selected for their low maintenance nature & shallow root systems. This enables the thickness of the canopy roof structure to be minimised. 40mm Hydrocell is proposed to lighten the canopy load, retain moisture and support the plants in minimal growing media.



Vriesea hieroglyphica



Alcantarea Imperialis Rubra



Alcantarea extensa



Aechmea fasciata 'Primera'