

Check all dimensions and site conditions prior to commencement of any work, the purchase or ordering of any materials. Builders, plant, services, erections and the preparation of shop drawings and/or the fabrication of any components.

Do not scale drawings - refer to figured dimensions only. Any discrepancies shall immediately be referred to the architect for clarification.

All drawings may not be reproduced or distributed without prior permission from the architect.

Legend

Materials

CP-01 Textured Granosile sandbased render - white
CP-02 Sandblasted pre-cast concrete panels- green pigment added to mix
CP-03 Sandblasted pre-cast concrete panels- pink pigment added to mix
CP-04 Sandblasted pre-cast concrete panels- yellow pigment added to mix
CP-05 Sandblasted pre-cast concrete panels- blue pigment added to mix
CP-06 Sandblasted pre-cast concrete panels- orange pigment added to mix

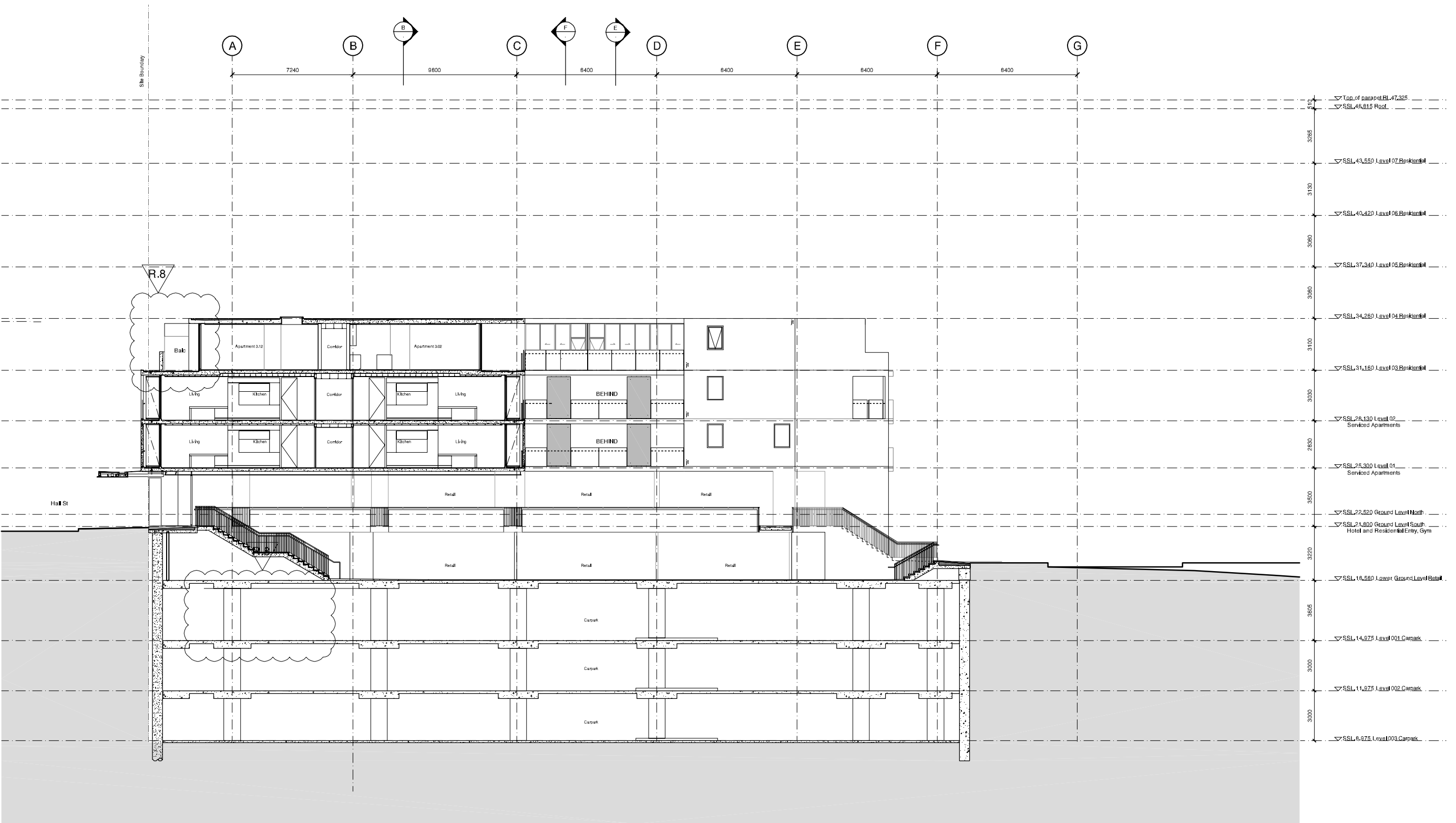
GL-01 Glass - clear to BASIX spec below
GL-02 Glass - colourbacked
GL-02 Glass - translucent

GC-01 Glass canopy - clear glass with stainless steel fittings on powdercoated steel frame

BH-01 Balustrade - clear glass
BH-02 Balustrade - sandblasted glass

RD-01 Rollerdoor - anodised aluminium

LV-01 Louvre - clear glass on anodised aluminium frame
LV-02 Louvre - anodised aluminium



8	24/06/11	MOD 2 Submission	JC	PB
7	04/02/11	Section 75W Submission	PL	PB
Revision	Date	Description	Initial	Checked

61 Hall Street, Bondi

Section G-G

Scale 1:100@B1
Drawn JI
Project No. 10788
Status MOD 2 Submission
Plot Date 27/6/2011 4:40 PM

Plot File S:\10788-10788\10788_jog_hallstreet01_mechanical\Architectural\A5.607.dwg
LPA Issue 20110621\lpa\A5.607.dwg
Revision

A5.607 8

Sydney 1/243 Liverpool Street
East Sydney NSW 2010 Australia
T 02 9364 5100 F 02 9364 5199
email ayt@batesmart.com.au
http://www.batesmart.com.au

Melbourne 1 Nicholson Street
Melbourne VIC 3000 Australia
T 03 9364 6200 F 03 9364 6300
email mel@batesmart.com.au
http://www.batesmart.com.au

Bates Smart Pty Ltd ABN 70 004 999 400

BATESSMART