

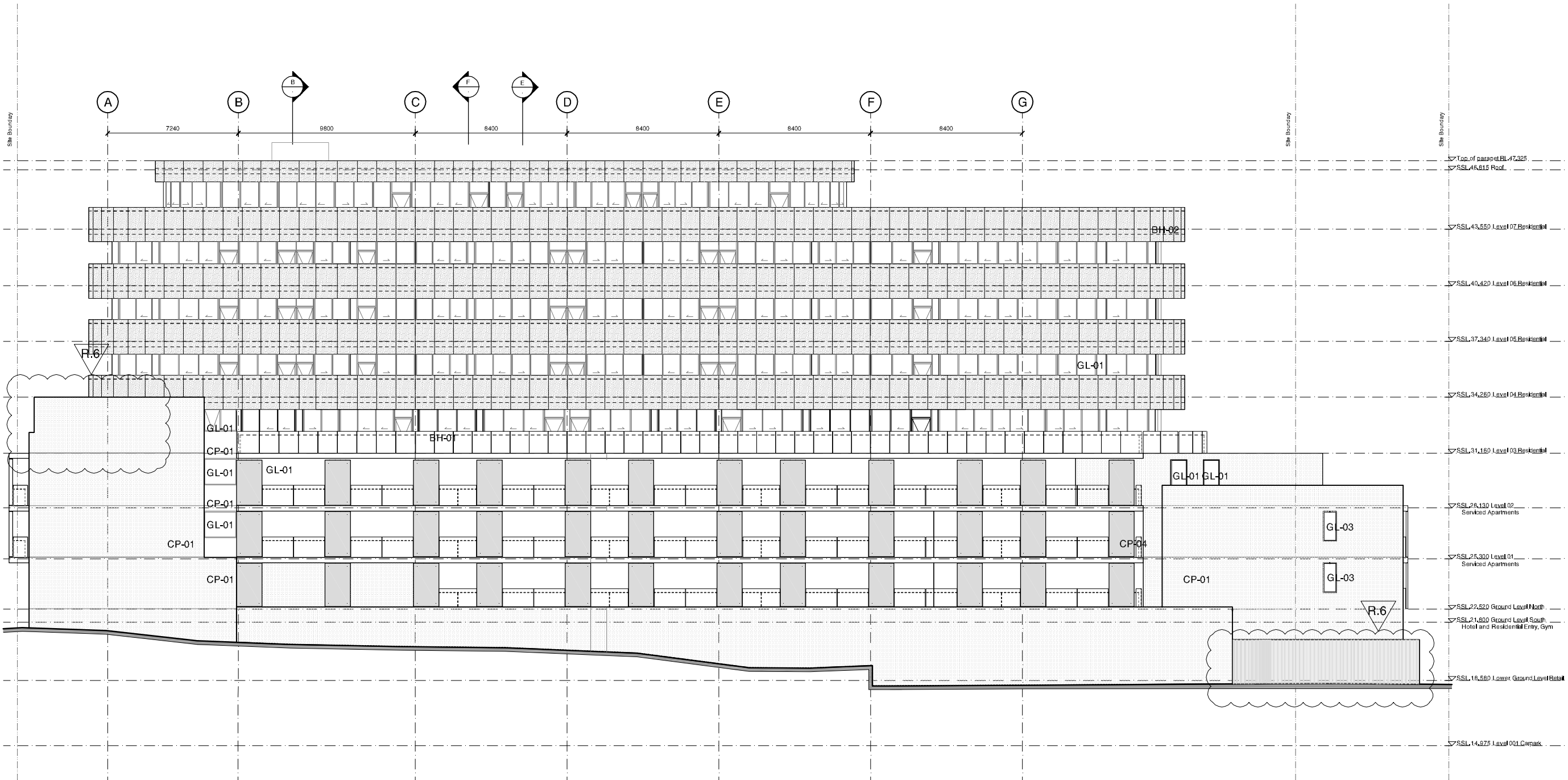
Check all dimensions and site conditions prior to commencement of any work, the purchase or ordering of any materials. Builders, plant services engineers and the preparation of shop drawings and/or the fabrication of any components.

Do not scale drawings - refer to figured dimensions only. Any discrepancies shall immediately be referred to the architect for clarification.

All drawings may not be reproduced or distributed without prior permission from the architect.  
Legend

Materials

CP-01	Textured Granite sandbased render - white
CP-02	Sandblasted pre-cast concrete panels - green pigment added to mix
CP-03	Sandblasted pre-cast concrete panels - pink pigment added to mix
CP-04	Sandblasted pre-cast concrete panels - yellow pigment added to mix
CP-05	Sandblasted pre-cast concrete panels - blue pigment added to mix
CP-06	Sandblasted pre-cast concrete panels - orange pigment added to mix
GL-01	Glass - clear to BASIX spec below
GL-02	Glass - colourbacked
GL-02	Glass - translucent
GC-01	Glass canopy - clear glass with stainless steel fittings on powdercoated steel frame
BH-01	Balustrade - clear glass
BH-02	Balustrade - sandblasted glass
RD-01	Rollerdoor - anodised aluminium
LV-01	Louvre - clear glass on anodised aluminium frame
LV-02	Louvre - anodised aluminium



6	24/08/11	MOD 2 Submission	JC	PB
5	04/02/11	Section 75W Submission	PL	PB
Revision	Date	Description	Initial	Checked

61 Hall Street, Bondi

South East Elevation

Scale	1:100@B1
Drawn	PL
Project No.	10788
Status	MOD 2 Submission
Plot Date	27/8/2011 4:36 PM
Plot File	S:\10788-10788\10788_Stage\Architect\Architectural\A5.104.dwg
Drawing No.	Revision

A5.104

6

Sydney 1/243 Liverpool Street  
East Sydney NSW 2010 Australia  
T 02 9354 5100 F 02 9354 5199  
email syd@batesmart.com.au  
http://www.batesmart.com.au

Melbourne 1 Nicholson Street  
Melbourne VIC 3000 Australia  
T 03 9354 6200 F 03 9354 6300  
email mel@batesmart.com.au  
http://www.batesmart.com.au

Bates Smart Pty Ltd ABN 70 004 999 400