

Check all dimensions and site conditions prior to commencement of any work, the purchase or ordering of any materials, fittings, plant, services or equipment and the preparation of shop drawings and/or the fabrication of any components.

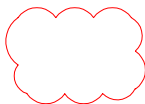
Do not scale drawings - refer to figured dimensions only. Any discrepancies shall immediately be referred to the architect for clarification.

All drawings may not be reproduced or distributed without prior permission from the architect.

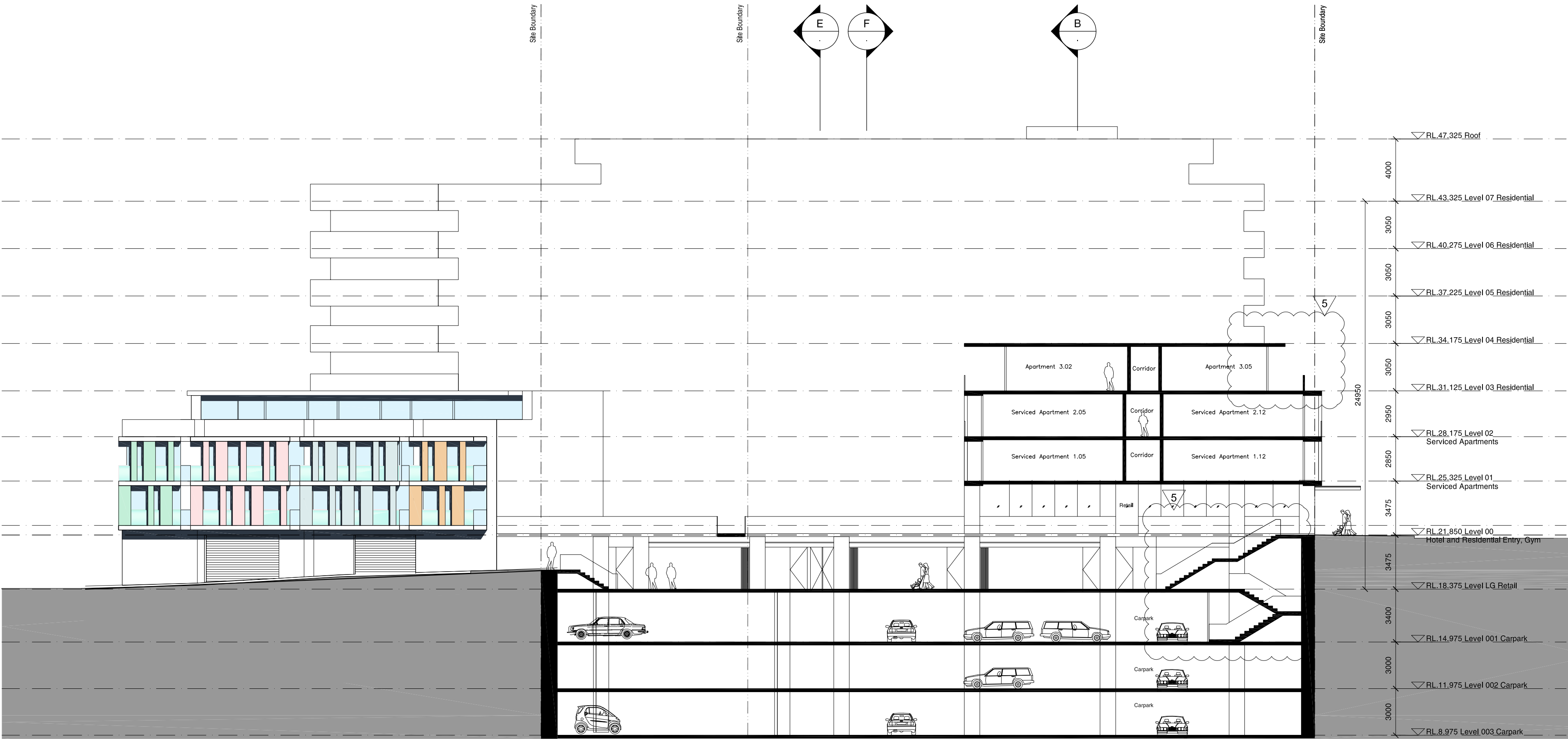
Legend

Materials

CP-01	Textured Granosite sandbased render - white
CP-02	Sandblasted pre-cast concrete panels- green pigment added to mix
CP-03	Sandblasted pre-cast concrete panels- pink pigment added to mix
CP-04	Sandblasted pre-cast concrete panels- yellow pigment added to mix
CP-05	Sandblasted pre-cast concrete panels- blue pigment added to mix
CP-06	Sandblasted pre-cast concrete panels- orange pigment added to mix
GL-01	Glass - clear to BASIX spec below
GL-02	Glass - colourbacked
GC-01	Glass canopy - clear glass with stainless steel fittings on powdercoated steel frame
BH-01	Balustrade - clear glass
BH-02	Balustrade - sandblasted glass
RD-01	Rollerdoor - anodised aluminium
LV-01	Louvre - clear glass on anodised aluminium frame
LV-02	Louvre - anodised aluminium



CONDITION B1



5	15/12/10	Section 75W Submission	PL	PB
4	06/08/10	Issued to DoP	PL	PB
3	26/03/10	PPR Submission	JL	KP
Rev.	Date	Description	Initial	Checked

61 Hall Street, Bondi

Section CC

Status	SECTION 75W SUBMISSION
Scale	1/200 @ A2
Drawn	JL
Project no.	---
Date	

Plot file	S:\10700-10799-S10788_T05A_HALLSTREET01_MAIN	Revision	5
Drawing no.	CADPLOTS\PPR\A5.603.DWG		

Melbourne 1 Nicholson Street Melbourne VIC 3000 Australia T 03 8664 6200 F 03 8664 6300 email: melb@batesmart.com.au http://www.batesmart.com.au	Sydney 1/243 Liverpool Street East Sydney NSW 2010 Australia T 02 8354 5100 F 02 8354 5199 email: syd@batesmart.com.au http://www.batesmart.com.au
--	--

Bates Smart Pty Ltd ABN 70 004 999 400

BATESSMART™