

Noise Model 4

Activities Completed and Noise Mitigation Installed

- Audio-visual mound around the recycling and re-processing area to a height of 57m AHD.
- Southern acoustic mound constructed to a height of 56m AHD to 60m AHD across the north of active waste cell.
- Eastern mound reinstated by WM to 57m
- Installation of all recycling and re-processing equipment and buildings.

Note: Northern face and central acoustic mound removed.

Activities in Progress

- A. Delivery of wastes by truck to recycling and re-processing area (@ 49m AHD (Tr1) and 48m AHD (Tr4) and active waste cell @ 48m AHD (Tr2) and 50m AHD (Tr3)). [16 truck movements per hour].
- B. Compaction of wastes in active waste cell [Waste Compactor (Cat 825H @ 48 m AHD) (WC)].
- E. Operation of all recycling and re-processing plant within the recycling and re-processing area at various levels 45m/48m AHD and long reach excavator (15t) @ 48 m AHD (Ex)].
- F. Dust suppression and road maintenance [1 x 30 000L truck @ 49m AHD (entering active waste cell)].
- G. Loading clay or shale from stockpile in contingency stockpile area – FeL @ 54m AHD behind stockpile area (54m AHD) and nearby stationary truck (Tr1) @ 54m AHD (idling only).
- H. Loading of recycling products into truck (tr) within the recycling and re-processing area. [Front-end loader (Cat 966) @ 49m AHD and stationary truck at 49m AHD).

NOISE MODEL 5



Noise Model 5

Activities Completed and Noise Mitigation Installed

- Northern face (continuous) to a height 53m AHD.
- North eastern face (continuous) to a height of between 55m AHD and 58m AHD.
- Audio-visual mound around the recycling and re-processing area to a height of 57m AHD.
- Operation of all recycling and re-processing equipment and buildings and contingency stockpile area.

Activities in Progress

- I. Delivery of wastes by truck to recycling and re-processing area @ 49m AHD (TR) and active waste cell @ 45m AHD (TR), 47m AHD (TR) and 48m AHD (TR). [16 truck movements per hour].
- J. Compaction of wastes in active waste cell [Waste Compactor (Cat 825H) @ 45m AHD (C)].
- K. Ripping and excavation of material from Cells 1B and 1C and Cells 2 and delivery to stockpile area in Cell 3 [1 x D11 Bulldozer @ 35m AHD (BD) and 1 x Scraper (Cat 637) @ 47m AHD (SC), delivery of shale to external stockpile area].
- L. Excavating [long reach excavator (15t) @ 35m AHD (EX)] and loading clay at ground level in Cell 1B into trucks for despatch off site [1 truck @ 35m AHD (TR)/ 1 mobile truck @ RL 47m AHD (TR)] (8 truck movements per hour).
- M. Operation of all recycling and re-processing plant within the recycling and re-processing area at various levels 45m-49m AHD and long reach excavator (15t) @ 48m AHD (EX).
- N. Dust suppression and road maintenance [1 x 30 000L truck @ 47m AHD (WT) (entering Cell 2A)].
- O. Loading clay or shale from stockpile in contingency stockpile area – Front End Loader @ 54m AHD (FEL) behind stockpile area (54m AHD) and nearby stationary truck @ 53m AHD (TR) (idling only).
- P. Loading of recycling products into truck within the recycling and re-processing area. [Front-end loader (Cat 966) @ 49m AHD (FEL) and stationary truck @ 49m AHD (TR)].

NOISE MODEL 6



Noise Model 6

Activities Completed and Noise Mitigation Installed

- Some of northern face removed – remaining at height of 53m AHD
- Central acoustic mound extending from west across active waste cells 1A and 1B
- North eastern face (continuous) to a height of between 55m AHD and 58m AHD.
- Audio-visual mound around the recycling and re-processing area to a height of 57m AHD.
- Operation of all recycling and re-processing equipment and buildings and contingency stockpile area.

Activities in Progress

- A. Delivery of wastes by truck to recycling and re-processing area @ 49 AHD (TR) and active waste cell @ 45m AHD (TR), 47m AHD (TR) and 48m AHD (TR). [16 truck movements per hour].
- B. Compaction of wastes in active waste cell [Waste Compactor (Cat 825H) @ 45m AHD (C)].
- C. Ripping and excavation of material from Cells 2A and 2B and delivery to stockpile area in Cell 3 [1 x D11 Bulldozer @ 35m AHD (BD) and 1 x Scraper (Cat 637) @ 47m AHD (SC), delivery of shale to external stockpile area].
- D. Excavating [long reach excavator (15t) @ 35m AHD (EX)] and loading clay at ground level in Cell 2B into trucks for despatch off site [1 truck @ 35m AHD (TR)/ 1 mobile truck @ RL 47m AHD (TR)] (8 truck movements per hour).
- E. Operation of all recycling and re-processing plant within the recycling and re-processing area at various levels 45m-49m AHD and long reach excavator (15t) @ 48m AHD (EX).
- F. Dust suppression and road maintenance [1 x 30 000L truck @ 48m AHD (WT) (entering Cell 2A)].
- G. Loading clay or shale from stockpile in contingency stockpile area – Front End Loader @ 54m AHD (FEL) behind stockpile area (54m AHD) and nearby stationary truck @ 53m AHD (TR) (idling only).
- H. Loading of recycling products into truck within the recycling and re-processing area. [Front-end loader (Cat 966) @ 49m AHD (FEL) and stationary truck @ 49m AHD (TR)].

NOISE MODEL 7



Noise Model 7

Activities Completed and Noise Mitigation Installed

- Some of northern face removed – remaining at height of 53m AHD
- North eastern face (continuous) to a height of between 55m AHD and 58m AHD.
- Central acoustic mound extending from west across rehabilitated waste cells 1A and 1B
- Southern acoustic mound extending from west across rehabilitated waste cells 1B and 1C
- Audio-visual mound around the recycling and re-processing area to a height of 57m AHD.
- Operation of all recycling and re-processing equipment and buildings and contingency stockpile area.

Activities in Progress

- A. Delivery of wastes by truck to recycling and re-processing area @ 49m AHD (TR) and active waste cell @ 45m AHD (TR), 47m AHD (TR) and 48m AHD (TR). [16 truck movements per hour].
- B. Compaction of wastes in active waste cell [Waste Compactor (Cat 825H) @ 45m AHD (C)].
- C. Ripping and excavation of material from Cells 2A and 2B and delivery to stockpile area in Cell 3 [1 x D11 Bulldozer @ 35m AHD (BD) and 1 x Scraper (Cat 637) @ 48m AHD (SC), delivery of shale to external stockpile area].
- D. Excavating [long reach excavator (15t) @ 35m AHD (EX)] and loading clay at ground level in Cell 2C into trucks for despatch off site [1 truck @ 35m AHD (TR)/ 1 mobile truck @ RL 47m AHD (TR)] (8 truck movements per hour).
- E. Operation of all recycling and re-processing plant within the recycling and re-processing area at various levels 45m-49m AHD and long reach excavator (15t) @ 48m AHD (EX).
- F. Dust suppression and road maintenance [1 x 30 000L truck @ 47m AHD (WT) (entering Cell 2A)].
- G. Loading clay or shale from stockpile in contingency stockpile area – Front End Loader @ 54m AHD (FEL) behind stockpile area (54m AHD) and nearby stationary truck @ 53m AHD (TR) (idling only).
- H. Loading of recycling products into truck within the recycling and re-processing area. [Front-end loader (Cat 966) @ 49m AHD (FEL) and stationary truck @ 49m AHD (TR)].

NOISE MODEL 8



Noise Model 8

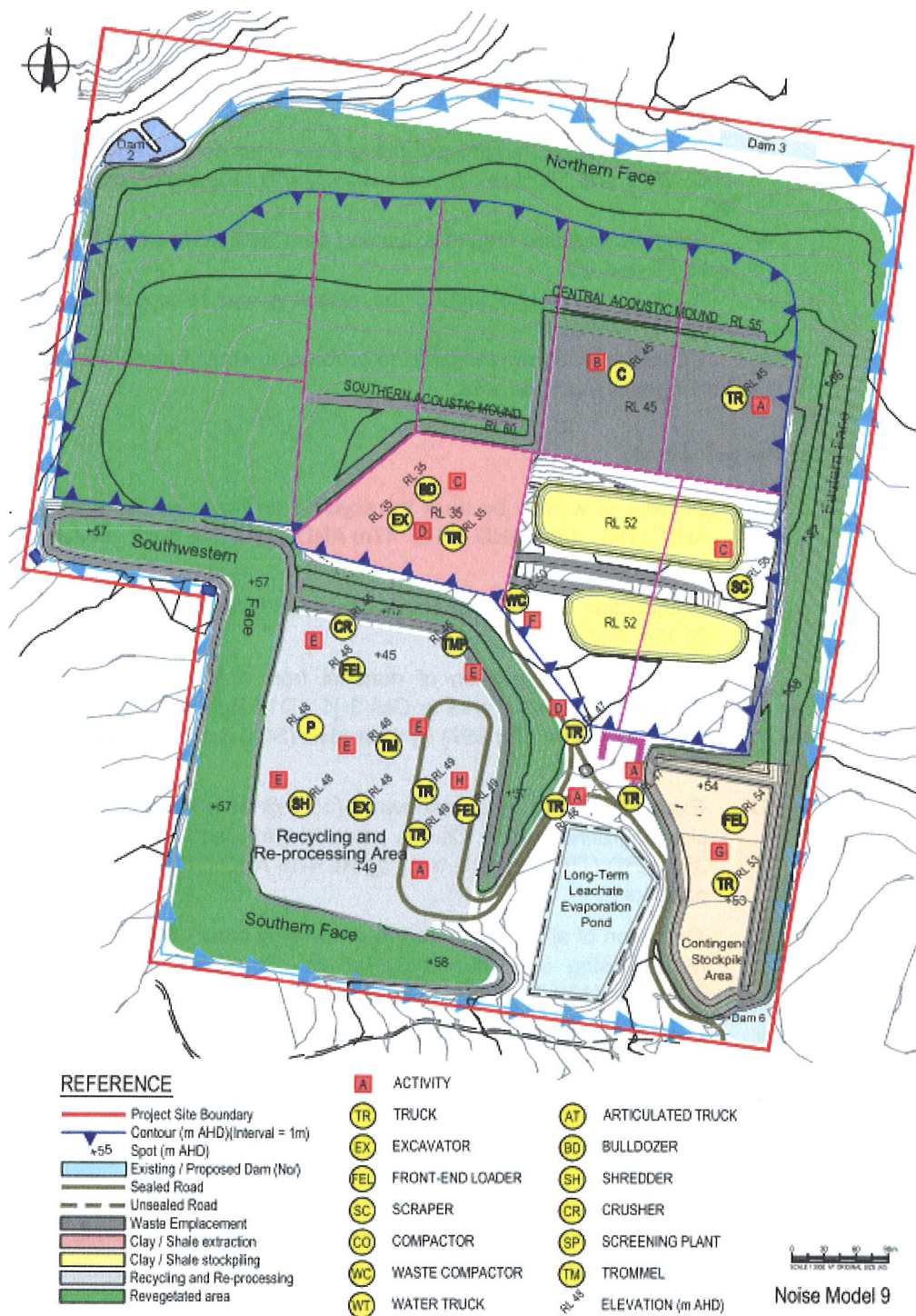
Activities Completed and Noise Mitigation Installed

- Most of northern face removed – remaining at height of 53m AHD
- North eastern face (continuous) to a height of between 55m AHD and 58m AHD.
- Central acoustic mound extending from west across rehabilitated waste cells 1A, and 1B, and clay extraction/landfill preparation cells 2A, 2B and 2C
- Southern acoustic mound extending from west across rehabilitated waste cells 1B and 1C
- Audio-visual mound around the recycling and re-processing area to a height of 57m AHD.
- Operation of all recycling and re-processing equipment and buildings and contingency stockpile area.

Activities in Progress

- A. Delivery of wastes by truck to recycling and re-processing area @ 49m AHD (TR), 48m AHD (TR), 47m AHD (TR). [16 truck movements per hour].
- B. Compaction of wastes in active waste cell [Waste Compactor (Cat 825H) @ 45m AHD (C)].
- C. Ripping and excavation of material from Cells 2A, 2B and 2C and delivery to stockpile area in Cell 3 [1 x D11 Bulldozer @ 35m AHD (BD) and 1 x Scraper (Cat 637) @ 48m AHD (SC), delivery of shale to external stockpile area].
- D. Excavating [long reach excavator (15t) @ 35m AHD (EX)] and loading clay at ground level in Cell 2A into trucks for despatch off site [1 truck @ 35m AHD (TR)/ 1 mobile truck @ RL 47m AHD (TR)] (8 truck movements per hour).
- E. Operation of all recycling and re-processing plant within the recycling and re-processing area at various levels 45m-49m AHD and long reach excavator (15t) @ 48m AHD (EX).
- F. Dust suppression and road maintenance [1 x 30 000L truck @ 47m AHD (WT) (entering Cell 2A)].
- G. Loading clay or shale from stockpile in contingency stockpile area – Front End Loader @ 54m AHD (FEL) behind stockpile area (54m AHD) and nearby stationary truck @ 53m AHD (TR) (idling only).
- H. Loading of recycling products into truck within the recycling and re-processing area. [Front-end loader (Cat 966) @ 49m AHD (FEL) and stationary truck @ 49m AHD (TR)].

NOISE MODEL 9



Noise Model 9

Activities Completed and Noise Mitigation Installed

- All of northern acoustic mound removed and some of north eastern acoustic mound removed
- Remaining north eastern acoustic mound to a height of between 56m AHD and 58m AHD.
- Central acoustic mound extending across active waste cells 2B and 2C
- Southern acoustic mound extending across rehabilitated waste cell 1B and clay extraction/landfill preparation cell 3C
- Audio-visual mound around the recycling and re-processing area to a height of 57m AHD.
- Operation of all recycling and re-processing equipment and buildings and contingency stockpile area.

Activities in Progress

- I. Delivery of wastes by truck to recycling and re-processing area @ 49m AHD (TR) and active waste cell @ 45m AHD (TR), 47m AHD (TR) and 48m AHD (TR). [16 truck movements per hour].
- J. Compaction of wastes in active waste cell [Waste Compactor (Cat 825H) @ 45m AHD (C)].
- K. Ripping and excavation of material from Cell 3C and delivery to stockpile area in Cell 3 [1 x D11 Bulldozer @ 35m AHD (BD) and 1 x Scraper (Cat 637) @ 50m AHD (SC), delivery of shale to external stockpile area].
- L. Excavating [long reach excavator (15t) @ 35m AHD (EX)] and loading clay at ground level in Cell 2B into trucks for despatch off site [1 truck @ 35m AHD (TR)/ 1 mobile truck @ RL 47m AHD (TR)] (8 truck movements per hour).
- M. Operation of all recycling and re-processing plant within the recycling and re-processing area at various levels 45m-49m AHD and long reach excavator (15t) @ 48m AHD (EX).
- N. Dust suppression and road maintenance [1 x 30 000L truck @ 50m AHD (WT) (entering Cell 3C)].
- O. Loading clay or shale from stockpile in contingency stockpile area – Front End Loader @ 54m AHD (FEL) behind stockpile area (54m AHD) and nearby stationary truck @ 53m AHD (TR) (idling only).
- P. Loading of recycling products into truck within the recycling and re-processing area. [Front-end loader (Cat 966) @ 49m AHD (FEL) and stationary truck @ 49m AHD (TR)].

NOISE MODEL 10



Noise Model 10

Activities Completed and Noise Mitigation Installed

- Some of north eastern acoustic mound removed
- Remaining north eastern acoustic mound to a height of between 57m AHD and 58m AHD alongside active waste cell 3A and contingency stockpile area.
- Southern acoustic mound extending across clay extraction/landfill preparation cell 3A, active waste cell 3B and rehabilitated waste cells 1B and 2A and 3C
- Audio-visual mound around the recycling and re-processing area to a height of 57m AHD.
- Operation of all recycling and re-processing equipment and buildings and contingency stockpile area.

Activities in Progress

- A. Delivery of wastes by truck to recycling and re-processing area @ 49m AHD (TR) and active waste cell @ 45m AHD (TR), 47m AHD (TR) and 48m AHD (TR). [16 truck movements per hour].
- B. Compaction of wastes in active waste cell [Waste Compactor (Cat 825H) @ 45m AHD (C)].
- C. Ripping and excavation of material from Cell 3A and delivery to external stockpile [1 x D11 Bulldozer @ 35m AHD (BD) and 1 x Scraper (Cat 637) @ 35m AHD (SC)].
- D. Excavating [long reach excavator (15t) @ 35m AHD (EX)] and loading clay at ground level in Cell 3A into trucks for despatch off site [1 truck @ 35m AHD (TR)/ 1 mobile truck @ RL 47m AHD (TR)] (8 truck movements per hour).
- E. Operation of all recycling and re-processing plant within the recycling and re-processing area at various levels 45m-49m AHD and long reach excavator (15t) @ 48m AHD (EX).
- F. Dust suppression and road maintenance [1 x 30 000L truck @ 47m AHD (WT) (entering Cell 3B)].
- G. Loading clay or shale from stockpile in contingency stockpile area – Front End Loader @ 54m AHD (FEL) behind stockpile area (54m AHD) and nearby stationary truck @ 53m AHD (TR) (idling only).
- H. Loading of recycling products into truck within the recycling and re-processing area. [Front-end loader (Cat 966) @ 49m AHD (FEL) and stationary truck @ 49m AHD (TR)].

