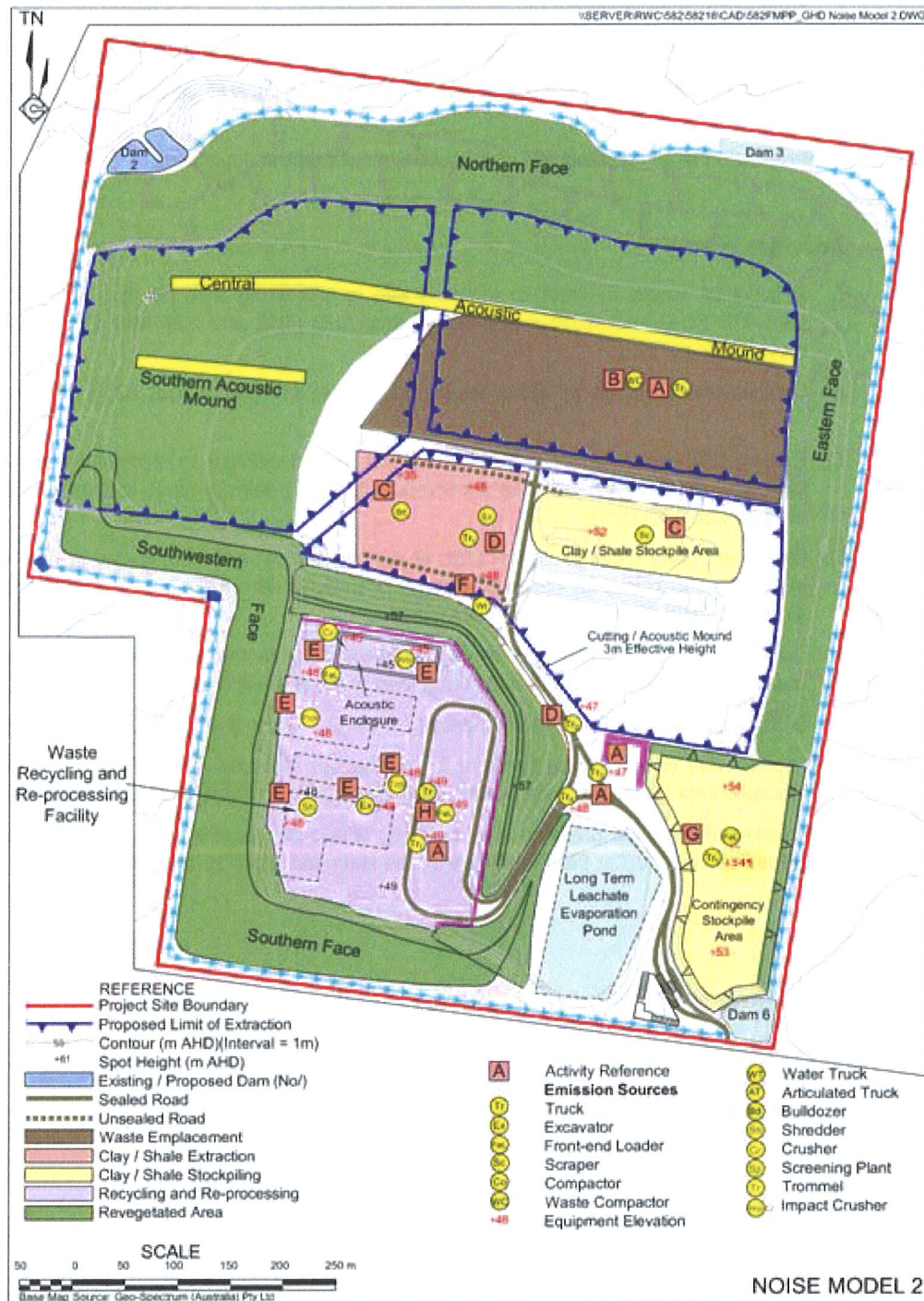


NOISE MODEL 2



Noise Model 2

Activities Completed and Noise Mitigation Installed

- Audio-visual mound around the recycling and re-processing area to a height of 57m AHD.
- Northern face (continuous) to a height 52m AHD.
- Central acoustic mound constructed to a height of 56 m AHD across the north of active waste cell.
- Installation of all recycling and re-processing equipment and buildings.

Activities in Progress

- A. Delivery of wastes by truck to recycling and re-processing area (@ 49m AHD (Tr1) and 48m AHD (Tr4) and active waste cell @ 52m AHD (Tr2) and 47m AHD (Tr3)). [16 truck movements per hour].
- B. Compaction of wastes in active waste cell [Waste Compactor (Cat 825H @ 52m AHD) (WC)].
- C. Ripping and excavation of material from Cell 3A and delivery to stockpile area [1 x D11 Bulldozer @ 35m AHD (Bd) and 1 x Scraper (Cat 637) delivery shale to external stockpile area @ 52m AHD (Sc)].
- D. Excavating [long reach excavator (15t) @ 48m AHD (Ex)] and loading clay at ground level in Cell 3C into trucks for despatch off site [1 truck @ 48m AHD (Tr1) / 1 mobile truck @ 47m AHD (Tr2) (8 truck movements per hour)].
- E. Operation of all recycling and re-processing plant within the recycling and re-processing area at various levels 45m/48m AHD and long reach excavator (15t) @ 48m AHD (Ex)].
- F. Dust suppression and road maintenance [1 x 30 000L truck @ 45m AHD (entering Cell 2A)].
- G. Loading clay or shale from stockpile in contingency stockpile area – FeL @ 54m AHD on stockpile area (54m AHD) and nearby stationary truck (Tr1) @ 54m AHD (idling only).
- H. Loading of recycling products into truck (tr) within the recycling and re-processing area. [Front-end loader (Cat 966) @ 49m AHD and stationary truck at 49m AHD].

NOISE MODEL 3



Noise Model 3

Activities Completed and Noise Mitigation Installed

- Audio-visual mound around the recycling and re-processing area to a height of 57m AHD.
- Southern acoustic mound constructed to a height of 56m AHD across the north of active waste cell.
- Installation of all recycling and re-processing equipment and buildings.

Note: Northern face and central acoustic mound removed.

Activities in Progress

- A. Delivery of wastes by truck to recycling and re-processing area (@ 49m AHD (Tr1) and 48m AHD (Tr4) and active waste cell @ 55m AHD (Tr2) and 44m AHD (Tr3)). [16 truck movements per hour].
- B. Compaction of wastes in active waste cell [Waste Compactor (Cat 825H @ 55m AHD) (WC)].
- C. Ripping and pushing of material from Cell 3B and loading by front-end loader into trucks [1 x D11 Bulldozer @ 35m AHD (Bd) and 1 x FeL @ 35 m AHD and 1 mobile truck @ 35m AHD].
- D. Excavating [long reach excavator (15t) @ 49m AHD (Ex)] and loading clay at ground level in Cell 3A into trucks for despatch off site [1 truck @ 49m AHD (Tr1) / 1 mobile truck @ 47m AHD (Tr2) (8 truck movements per hour)].
- E. Operation of all recycling and re-processing plant within the recycling and re-processing area at various levels 45m/48m AHD and long reach excavator (15t) @ 48m AHD (Ex)].
- F. Dust suppression and road maintenance [1 x 30 000L truck @ 48m AHD (entering active waste cell)].
- G. Loading clay or shale from stockpile in contingency stockpile area – FeL @ 54m AHD behind stockpile area (54m AHD) and nearby stationary truck (Tr1) @ 54m AHD (idling only).
- H. Loading of recycling products into truck (tr) within the recycling and re-processing area. [Front-end loader (Cat 966) @ 49m AHD and stationary truck at 49m AHD].

NOISE MODEL 4



Noise Model 4

Activities Completed and Noise Mitigation Installed

- Audio-visual mound around the recycling and re-processing area to a height of 57m AHD.
- Southern acoustic mound constructed to a height of 56m AHD to 60m AHD across the north of active waste cell.
- Eastern mound reinstated by WM to 57m
- Installation of all recycling and re-processing equipment and buildings.

Note: Northern face and central acoustic mound removed.

Activities in Progress

- A. Delivery of wastes by truck to recycling and re-processing area (@ 49m AHD (Tr1) and 48m AHD (Tr4) and active waste cell @ 48m AHD (Tr2) and 50m AHD (Tr3)). [16 truck movements per hour].
- B. Compaction of wastes in active waste cell [Waste Compactor (Cat 825H @ 48 m AHD) (WC)].
- E. Operation of all recycling and re-processing plant within the recycling and re-processing area at various levels 45m/48m AHD and long reach excavator (15t) @ 48 m AHD (Ex)].
- F. Dust suppression and road maintenance [1 x 30 000L truck @ 49m AHD (entering active waste cell)].
- G. Loading clay or shale from stockpile in contingency stockpile area – FeL @ 54m AHD behind stockpile area (54m AHD) and nearby stationary truck (Tr1) @ 54m AHD (idling only).
- H. Loading of recycling products into truck (tr) within the recycling and re-processing area. [Front-end loader (Cat 966) @ 49m AHD and stationary truck at 49m AHD).

NOISE MODEL 5



Noise Model 5

Activities Completed and Noise Mitigation Installed

- Northern face (continuous) to a height 53m AHD.
- North eastern face (continuous) to a height of between 55m AHD and 58m AHD.
- Audio-visual mound around the recycling and re-processing area to a height of 57m AHD.
- Operation of all recycling and re-processing equipment and buildings and contingency stockpile area.

Activities in Progress

- I. Delivery of wastes by truck to recycling and re-processing area @ 49m AHD (TR) and active waste cell @ 45m AHD (TR), 47m AHD (TR) and 48m AHD (TR). [16 truck movements per hour].
- J. Compaction of wastes in active waste cell [Waste Compactor (Cat 825H) @ 45m AHD (C)].
- K. Ripping and excavation of material from Cells 1B and 1C and Cells 2 and delivery to stockpile area in Cell 3 [1 x D11 Bulldozer @ 35m AHD (BD) and 1 x Scraper (Cat 637) @ 47m AHD (SC), delivery of shale to external stockpile area].
- L. Excavating [long reach excavator (15t) @ 35m AHD (EX)] and loading clay at ground level in Cell 1B into trucks for despatch off site [1 truck @ 35m AHD (TR)/ 1 mobile truck @ RL 47m AHD (TR)] (8 truck movements per hour).
- M. Operation of all recycling and re-processing plant within the recycling and re-processing area at various levels 45m-49m AHD and long reach excavator (15t) @ 48m AHD (EX).
- N. Dust suppression and road maintenance [1 x 30 000L truck @ 47m AHD (WT) (entering Cell 2A)].
- O. Loading clay or shale from stockpile in contingency stockpile area – Front End Loader @ 54m AHD (FEL) behind stockpile area (54m AHD) and nearby stationary truck @ 53m AHD (TR) (idling only).
- P. Loading of recycling products into truck within the recycling and re-processing area. [Front-end loader (Cat 966) @ 49m AHD (FEL) and stationary truck @ 49m AHD (TR)].

NOISE MODEL 6



Noise Model 6

Activities Completed and Noise Mitigation Installed

- Some of northern face removed – remaining at height of 53m AHD
- Central acoustic mound extending from west across active waste cells 1A and 1B
- North eastern face (continuous) to a height of between 55m AHD and 58m AHD.
- Audio-visual mound around the recycling and re-processing area to a height of 57m AHD.
- Operation of all recycling and re-processing equipment and buildings and contingency stockpile area.

Activities in Progress

- A. Delivery of wastes by truck to recycling and re-processing area @ 49 AHD (TR) and active waste cell @ 45m AHD (TR), 47m AHD (TR) and 48m AHD (TR). [16 truck movements per hour].
- B. Compaction of wastes in active waste cell [Waste Compactor (Cat 825H) @ 45m AHD (C)].
- C. Ripping and excavation of material from Cells 2A and 2B and delivery to stockpile area in Cell 3 [1 x D11 Bulldozer @ 35m AHD (BD) and 1 x Scraper (Cat 637) @ 47m AHD (SC), delivery of shale to external stockpile area].
- D. Excavating [long reach excavator (15t) @ 35m AHD (EX)] and loading clay at ground level in Cell 2B into trucks for despatch off site [1 truck @ 35m AHD (TR)/ 1 mobile truck @ RL 47m AHD (TR)] (8 truck movements per hour).
- E. Operation of all recycling and re-processing plant within the recycling and re-processing area at various levels 45m-49m AHD and long reach excavator (15t) @ 48m AHD (EX).
- F. Dust suppression and road maintenance [1 x 30 000L truck @ 48m AHD (WT) (entering Cell 2A)].
- G. Loading clay or shale from stockpile in contingency stockpile area – Front End Loader @ 54m AHD (FEL) behind stockpile area (54m AHD) and nearby stationary truck @ 53m AHD (TR) (idling only).
- H. Loading of recycling products into truck within the recycling and re-processing area. [Front-end loader (Cat 966) @ 49m AHD (FEL) and stationary truck @ 49m AHD (TR)].