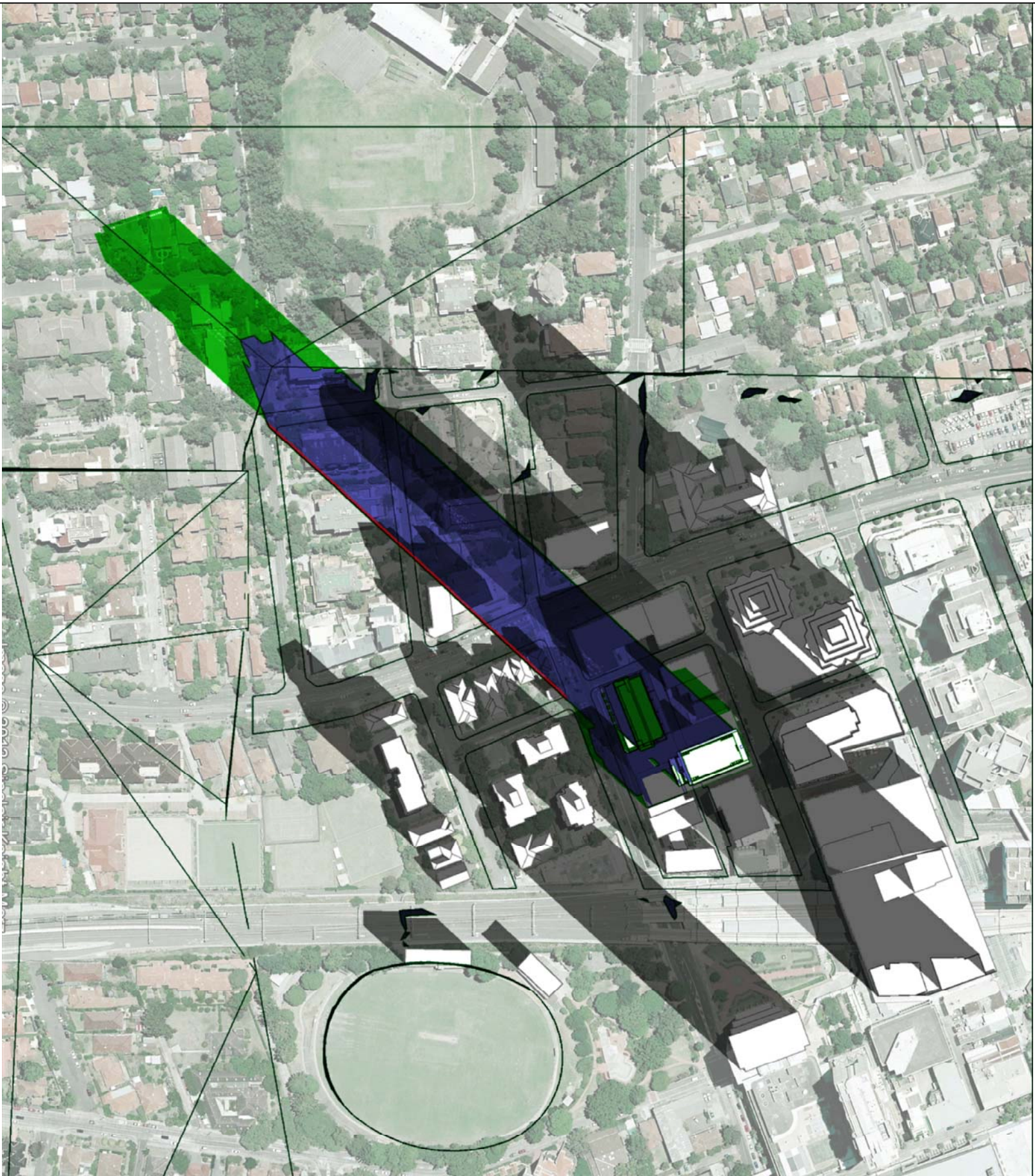
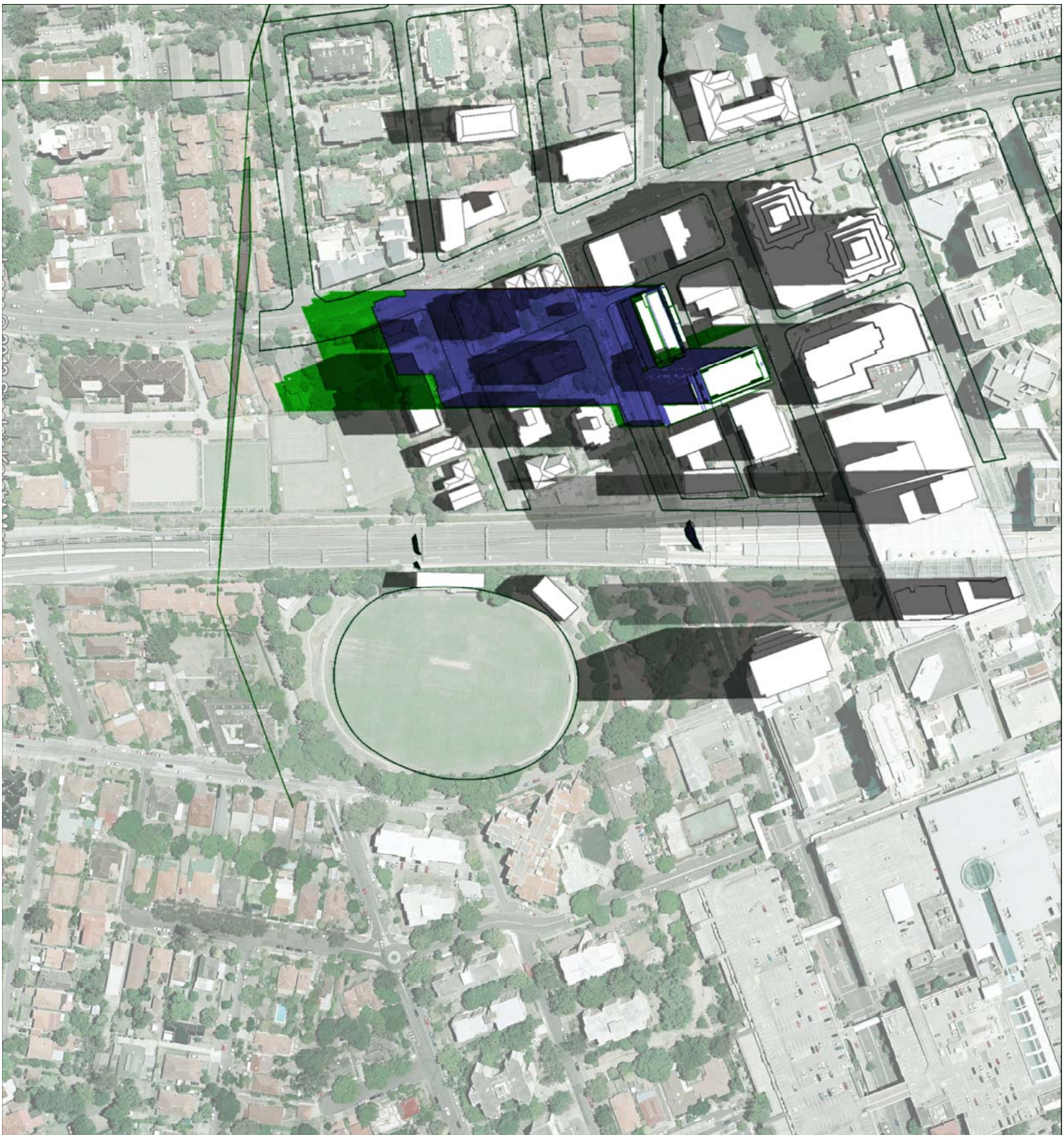


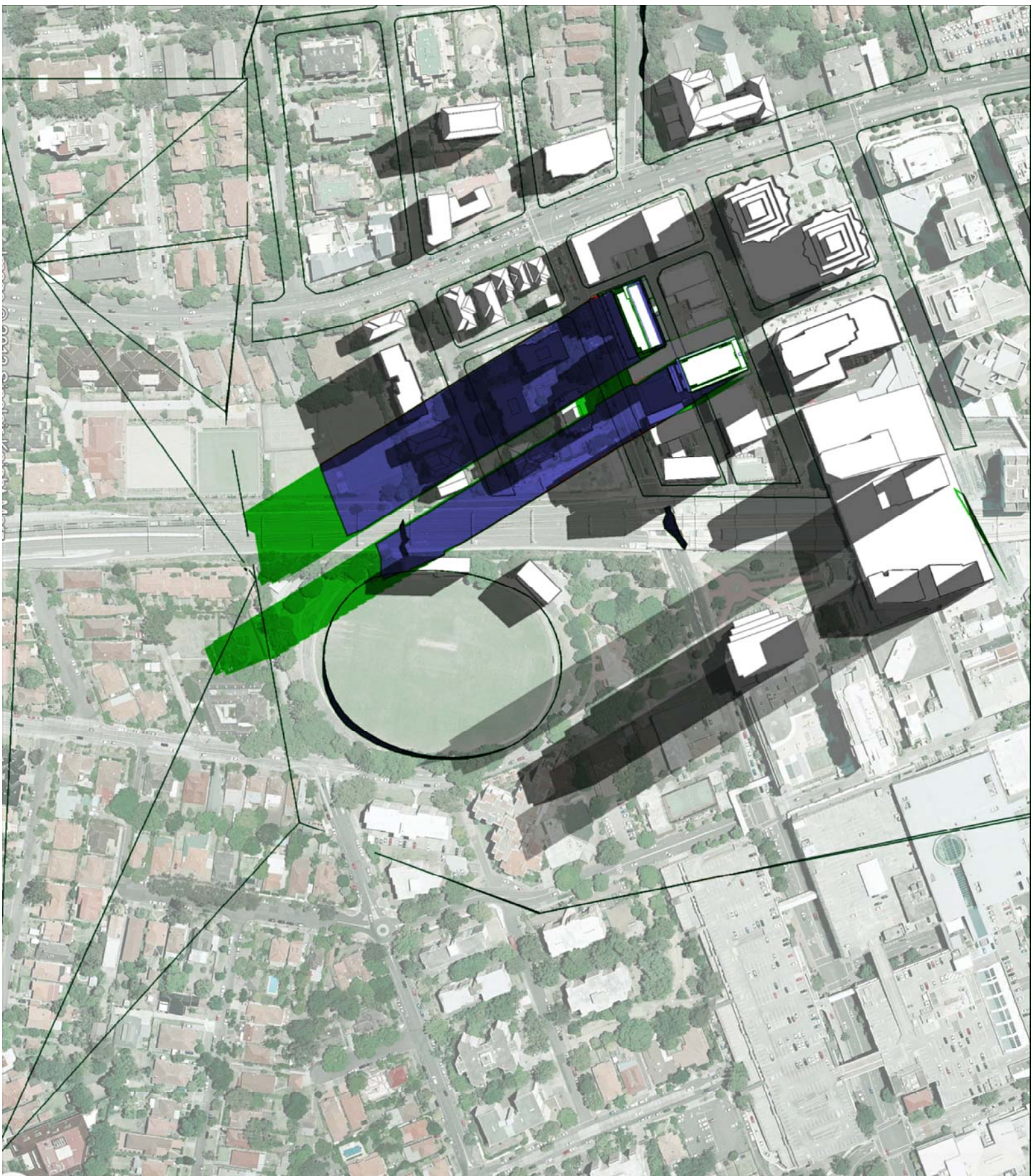
9 AM, 21 JUN



12 PM, 21 JUN



3 PM, 21 JUN



D 5/20W Modification 6	06.2013
C Section 75W Submission	11.2012
B EA Submission	16.12.09
A submitted for 'test of adequacy'	09.11.09

Do not scale from drawings. Verify all dimensions on site before commencing work. Copying or the reproduction of this drawing is strictly prohibited without the consent of PTW Architects P/L.

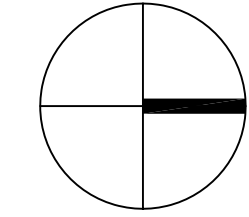
**Client**  
**Meriton Group**  
Level 11 Meriton Tower,  
528 Kent St,  
Sydney NSW 2000

**Architect**

**PTW Architects**  
  
Level 13, 9 Castlereagh St  
Sydney NSW Australia 2000  
T 612 9232 5877  
F 612 9221 4139  
www.ptw.com.au

**Contractor**

- Consultants**
- Planner
  - Structural
  - Services
  - Landscape
  - Acoustics
  - Traffic



LEGEND

- SHADOW OF APPROVED EA**
- SHADOW INCREASED FROM APPROVED EA**
- SHADOW DECREASED FROM APPROVED EA**
- SHADOW CAST BY EXISTING BUILDING**
- SHADOW CAST BY INTER CHANGE TOWERS**

**MERITON THOMAS STREET**  
Thomas Street/ Albert Avenue  
Cherrywood NSW 2067

**Project No.** 212007  
**Scale:** 1:2000(A1); 1:4000(A3)  
**Date:** 18/7/2012  
**Drawn** PW  
**Checked** SP  
**Approved**

SHADOW DIAGRAM  
21 JUN

**A-0202-3 D**  
SECTION 75W MODIFICATION 6