

**NSW GOVERNMENT**  
Planning

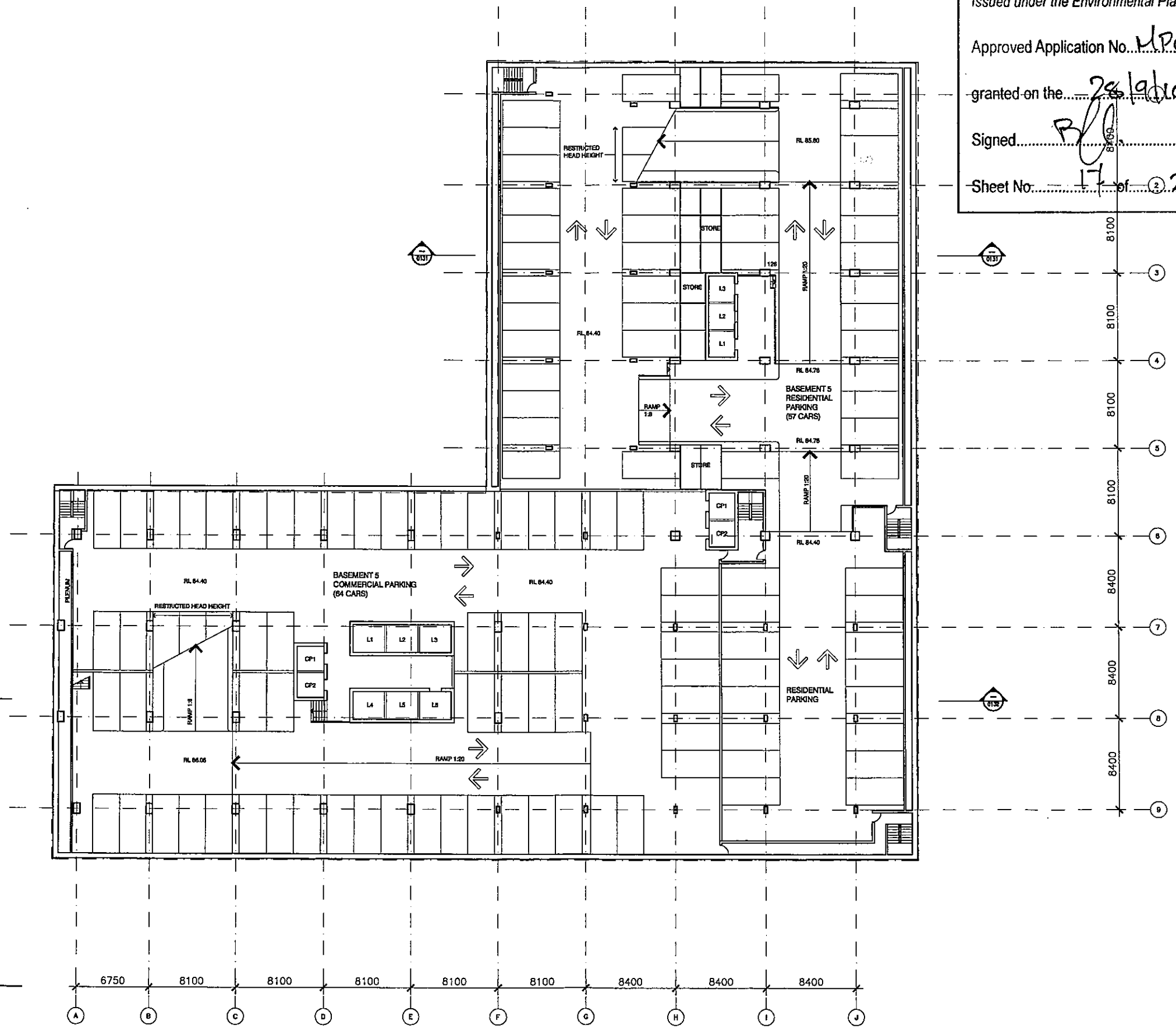
Issued under the Environmental Planning and Assessment Act 1979

Approved Application No. MP09-0066

granted on the 26/10/10

Signed [Signature]

Sheet No. 17 of 28



**1 BASEMENT 5 PLAN**  
1:200

B	EA Submission	18.12.09
A	Submitted for Test of Adequacy	09.11.09

Do not scale from drawings. Verify all dimensions on site before commencing work. Copying or the reproduction of this drawing is strictly prohibited without the consent of PTW Architects PL.

Client  
Welles Thomas Pty Ltd  
Suite 22, Level 4  
12 Thomas Street  
Chatswood NSW 2007

Architect  
**PTW Architects**  
Level 17, 9 Castlereagh St  
Sydney NSW Australia 2000  
T 612 9232 5877  
F 612 9221 4139  
www.ptw.com.au

Contractor

Consultants

Planner	JBA Planning
Structural	Birzu's Associates
Services	George Floth Pty. Ltd
Landscape	Site Image
Acoustics	Acoustic Logic
Traffic	TTPA

**WELLES THOMAS PLAZA**  
Thomas Street/ Albert Avenue  
Chatswood NSW 2007

Project No. 209039  
Scale: 1:200@A1;1:400@A3  
Date: 10/9/2009  
Drawn: DH  
Checked: -  
Approved: [Signature]

**BASEMENT 5 PLAN**  
A-0115 /B  
PRELIMINARY