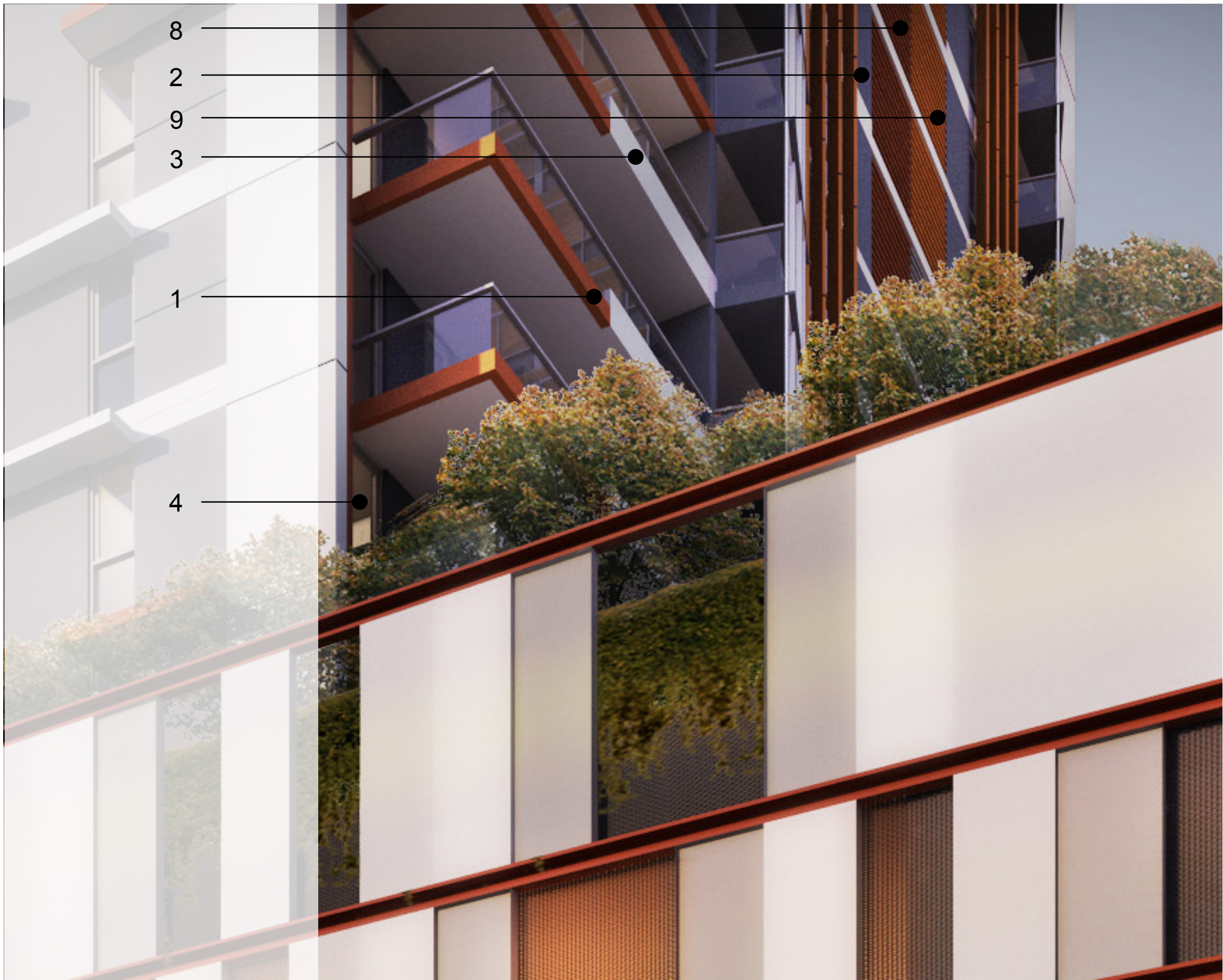
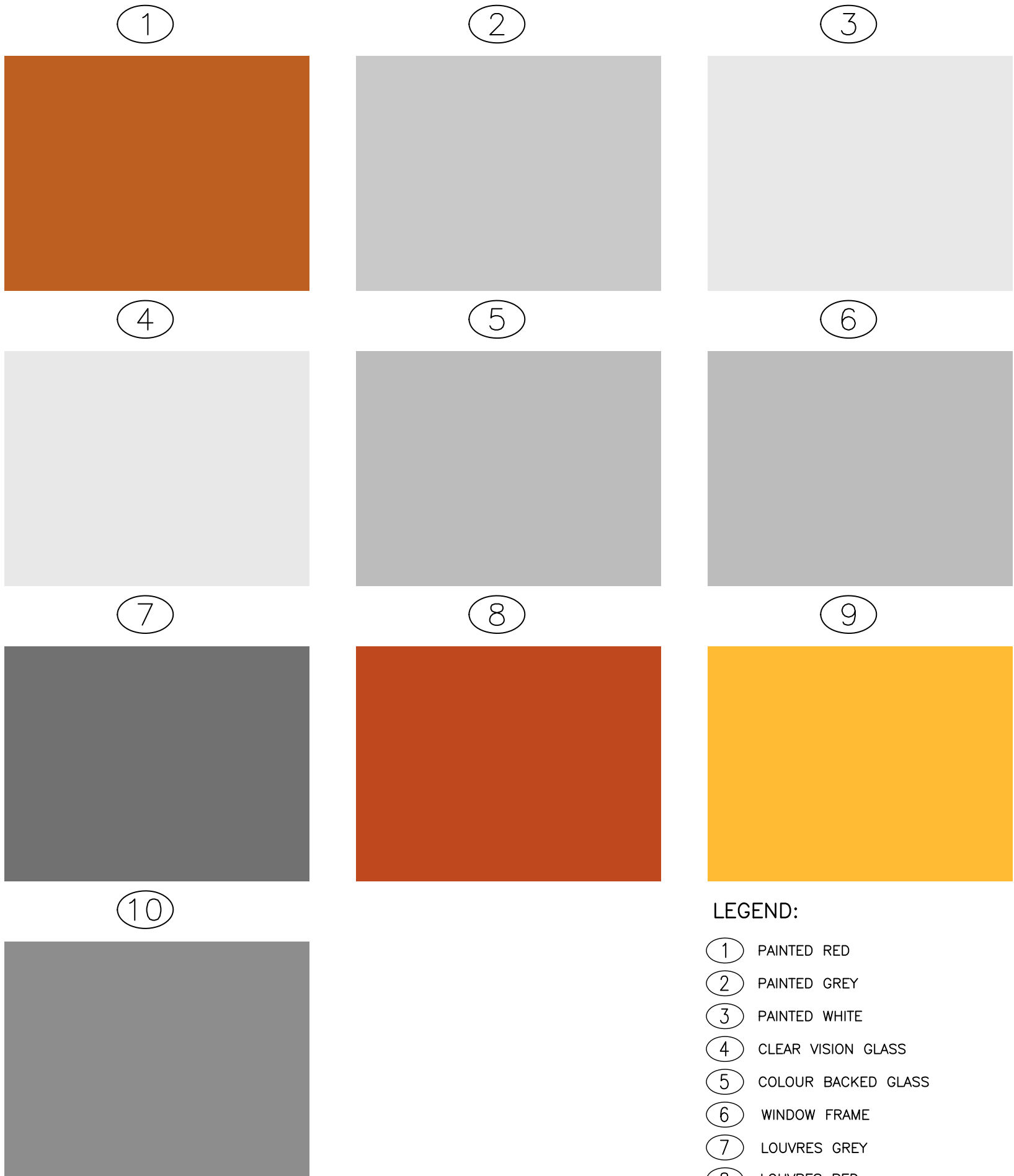




1 BUILDING 1 FACADE FINISHES



2 BUILDING 1 FACADE FINISHES



- LEGEND:
- 1 PAINTED RED
  - 2 PAINTED GREY
  - 3 PAINTED WHITE
  - 4 CLEAR VISION GLASS
  - 5 COLOUR BACKED GLASS
  - 6 WINDOW FRAME
  - 7 LOUVRES GREY
  - 8 LOUVRES RED
  - 9 SCREEN GOLD
  - 10 PANEL DARK GREY

Revisions

C Section 75W Submission 02.11.12  
B EA Submission 18.12.09

Do not scale from drawings. Verify all dimensions on site before commencing work. Copying or the reproduction of this drawing is strictly prohibited without the consent of PTW Architects P/L.

Client  
**Meriton Group**  
Level 11 Meriton Tower,  
528 Kent St,  
Sydney NSW 2000

Architect  
PTW Architects  
**PTW**  
Level 13, 9 Castlereagh St  
Sydney NSW Australia 2000  
T 612 9232 5877  
F 612 9221 4139  
www.ptw.com.au

Contractor

Consultants  
Planner -  
Structural -  
Services -  
Landscape -  
Acoustics -  
Traffic -

**MERITON THOMAS STREET**  
Thomas Street/ Albert Avenue  
Chatswood NSW 2067

Project No. 212007  
Scale: -  
Date: 12/2009  
Drawn WP  
Checked EA  
Approved SP

BUILDING 1  
FACADE FINISHES  
**A-0181**  
SECTION 75 W SUBMISSION

C