

NOTE:
BUILDING LEVEL BELOW 50m DOES NOT REQUIRE
TECHNICIAN TO BE LATERALLY RESTRAINED.
REFER TO NATIONAL HEIGHT AND SAFETY
DRAWING FOR DETAILS.
* THIS BALUSTRADE MUST BE CAPABLE OF TAKING
THE 12KN LOAD OF ROPE ACCESS TECHNICIAN.
THE BALUSTRADE MUST NOT HAVE ABRASIVE
PROPERTIES

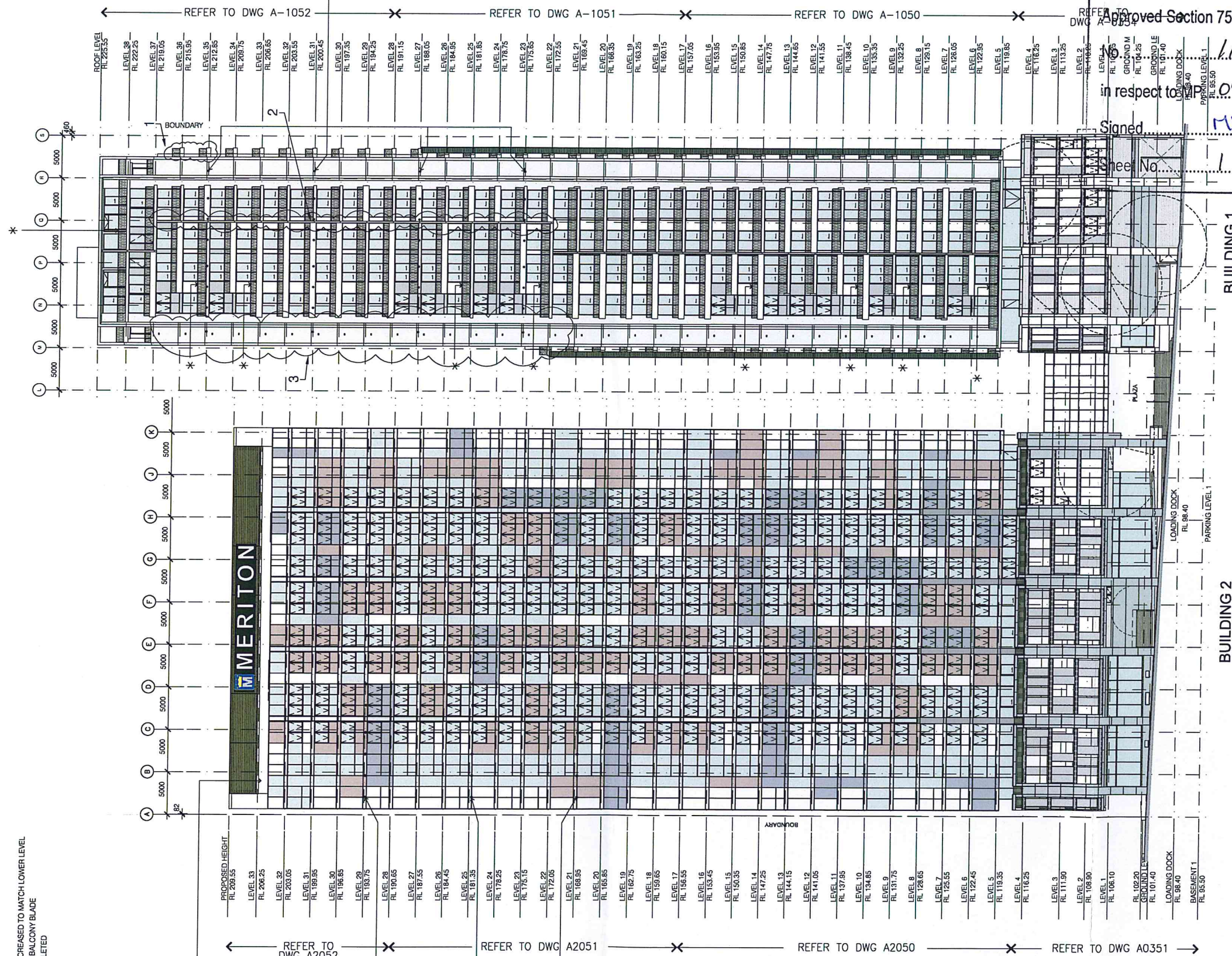
LEGEND

- 1 BALCONY INCREASED TO MATCH LOWER LEVEL
2 RELOCATED BALCONY BLADE
3 WINDOW DELETED

PARAPET REQUIRES
12KN LOADING
CAPABILITY. EDGE NOT
TO HAVE ABRASIVE
PROPERTIES AS ROPES
PROCEED OVER.

LATERAL RESTRAINT
ANCHORING
REQUIRED FOR ROPE
ACCESS TECHNICIAN.
NHS RECOMMENDS
LATERAL RESTRAINT
HAS A LOADING
CAPACITY OF 1KN

LATERAL RESTRAINT
ANCHORING
REQUIRED FOR ROPE
ACCESS TECHNICIAN.
NHS RECOMMENDS
LATERAL RESTRAINT
HAS A LOADING
CAPACITY OF 1KN



NSW GOVERNMENT
Planning

Issued under the Environmental Planning and Assessment Act 1979

Approved Section 75W Modification Application

1/1 granted on the 10/09/2014

in respect to P 09_0066

Signed: MB
Sheet No. 1 of 12

Revisions	
10 SECTION 75W	
- BALCONY BLADE WALL BETWEEN APART, RELOCATED	
- WINDOWS REMOVED	27.06.2014
- BALCONY ADJUSTED	
9 ISSUED FOR CC	30.05.2014
8 SAFETY NOTES ADDED	10.04.2014
7 SIGNAGE UPDATED	28.03.2014
6 SIGNAGE/PODIUM UPDATED	24.03.2014
5 ISSUED FOR CONSTRUCTION CERTIFICATE	03.02.2014
4 ELEVATION AMENDED (REVISED MOD 6)	13.12.2013
3 ISSUE FOR INFORMATION	18.06.2013
2 GLASS BRIDGE INTRODUCED	23.05.2013
1 ISSUE FOR CO-ORDINATION	01.05.2013

Do not scale from drawings. Verify all
dimensions on site before commencing
work. Copying or the reproduction of this
drawing is strictly prohibited without the
consent of PTW Architects P/L.

Client
Meriton Group
Level 11 Meriton Tower,
528 Kent St
Sydney NSW 2000

Architect
PTW Architects
Level 13, 9 Castlereagh St
Sydney NSW Australia 2000
T 612 9232 5877
F 612 9221 4139
www.ptw.com.au

Contractor

Consultants
Planner
Structural
Services
Landscape
Acoustics
Traffic

MERITON THOMAS STREET
Thomas Street/ Albert Avenue
Chatswood NSW 2067

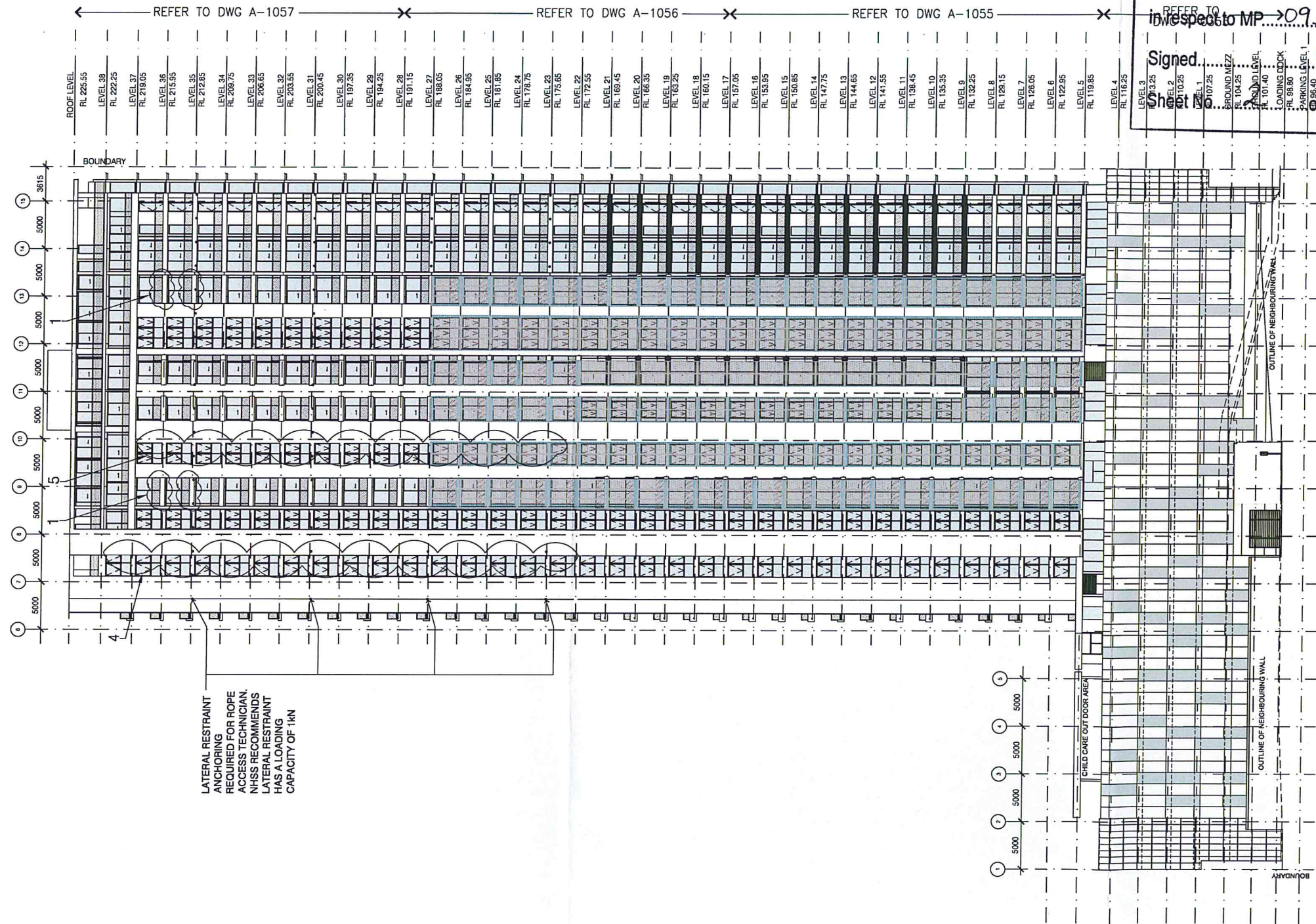
Project No. 212007
Scale: 1:250@A1;1:500@A3
Date: APRIL 2013
Drawn: AL/LR
Checked: EA
Approved: SP

SOUTH ELEVATION
A0071 10
FOR APPROVAL

NOTE:
BUILDING LEVEL BELOW 50m DOES NOT REQUIRE
TECHNICIAN TO BE LATERALLY RESTRAINED.
REFER TO NATIONAL HEIGHT AND SAFETY
DRAWING FOR DETAILS -
'NHSAS BUILDING 1 EAST ELEVATION'

LEGEND

- 1 BALCONY INCREASED TO MATCH LOWER LEVEL
4 WINDOW INCREASED
5 WINDOW DECREASED



NSW GOVERNMENT
Planning

Issued under the Environmental Planning and Assessment Act 1979

Approved Section 75W Modification Application

No. 111 granted on the 10/09/2014

in respect to MP 09 0066

Signed
Sheet No. 12 of 12

Revisions

7	SECTION 75W - BALCONY INCREASED - WINDOWS INCREASED/ REDUCED	27.06.2014
7	ISSUED FOR CC	30.05.2014
6	PODIUM UPDATED	25.03.2014
5	ISSUED FOR CONSTRUCTION CERTIFICATE	03.02.2014
4	ELEVATION AMENDED (REVISED MOD 6)	13.12.2013
3	ISSUE FOR INFORMATION	27.06.2013
2	GLASS BRIDGE INTRODUCED	23.05.2013
1	ISSUE FOR CO-ORDINATION	01.05.2013

Do not scale from drawings. Verify all
dimensions on site before commencing
work. Copying or the reproduction of this
drawing is strictly prohibited without the
consent of PTW Architects P/L.

Client
Meriton Group
Level 11 Meriton Tower,
528 Kent St
Sydney NSW 2000

Architect
PTW Architects
Level 13, 9 Castlereagh St
Sydney NSW Australia 2000
T 612 9232 5877
F 612 9221 4139
www.ptw.com.au

PTW

Contractor

Consultants

Planner -
Structural -
Services -
Landscape -
Acoustics -
Traffic -

MERITON THOMAS STREET
Thomas Street/ Albert Avenue
Chatswood NSW 2067

Project No. 212007
Scale: 1:250@A1, 1:500@A3
Date: APRIL 2013
Drawn: FA
Checked: EA
Approved: SP

BUILDING 1
EAST-ELEVATION
A-0072 7
FOR APPROVAL

THIS DRAWING IS SUBJECT TO SERVICES COORDINATION

ALL SERVICES INFORMATION SHOWN IS DESIGN INTENT ONLY. FOR ALL SERVICES CONSTRUCTION INFORMATION PLEASE REFER TO RELEVANT SUBCONTRACTORS DRAWINGS AND SPECIFICATIONS.

LEGEND			
E/A - EXHAUST AIR RISER	PS - PUBLIC STAIR	B - BOLLARD	
S/A - SUPPLY AIR	F/S - FIRE STAIR	ST - STORAGE	
S/P - STAIR PRESSURISATION	L1 - LIFT 1	OF - OVER FLOW	
L - LINEN CUPBOARD	PL1 - PUBLIC LIFT		
C - COAT CUPBOARD	E - ELECTRICAL		
R - RECYCLE WASTE ROOM	TM - TICKET MACHINE		



**NSW GOVERNMENT
Planning**

Issued under the Environmental Planning and Assessment Act 1979

Approved Section 75W Modification Application

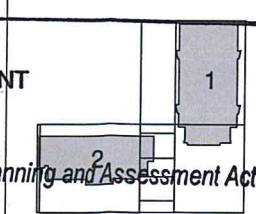
No. 11 granted on the 10/09/2014

in respect to MP 09 0066

Signed MB

Sheet No. 3 of 12

Keyzone



9 SECTION 75W	23.05.2014
2x 2B & 1B CONVERTED INTO 2x 3B	
8 LAYOUT RE-DESIGNED	12.03.2014
EXTENTS OF TILE FINISH COORDINATED	
7 ISSUE FOR CONSTRUCTION CERTIFICATE	03.02.2014
6 COORDINATED WITH REVISED MOD. 6	12.12.2013
DWG TITLE CHANGED FROM L22-33 TO L22-31	
5 LIFT TO BLDG 1 ADDED	28.08.2013
4 ISSUE FOR CO-ORDINATION	13.08.2013
3 GENERAL UPDATE	01.08.2013
2 GLASS BRIDGE INTRODUCED	23.05.2013
1 ISSUE FOR CO-ORDINATION	01.05.2013

Do not scale from drawings. Verify all dimensions on site before commencing work. Copying or the reproduction of this drawing is strictly prohibited without the consent of PTW Architects P/L.

Client
Meriton Group
Level 11 Meriton Tower,
525 Kent St,
Sydney NSW 2000

Architect

PTW Architects

Level 13, 9 Castlereagh St,
Sydney NSW Australia 2000
T 612 9232 5877
F 612 9221 4139
www.ptw.com.au

PTW

Contractor

Consultants

Planner -
Structural -
Services -
Landscape -
Acoustics -
Traffic -

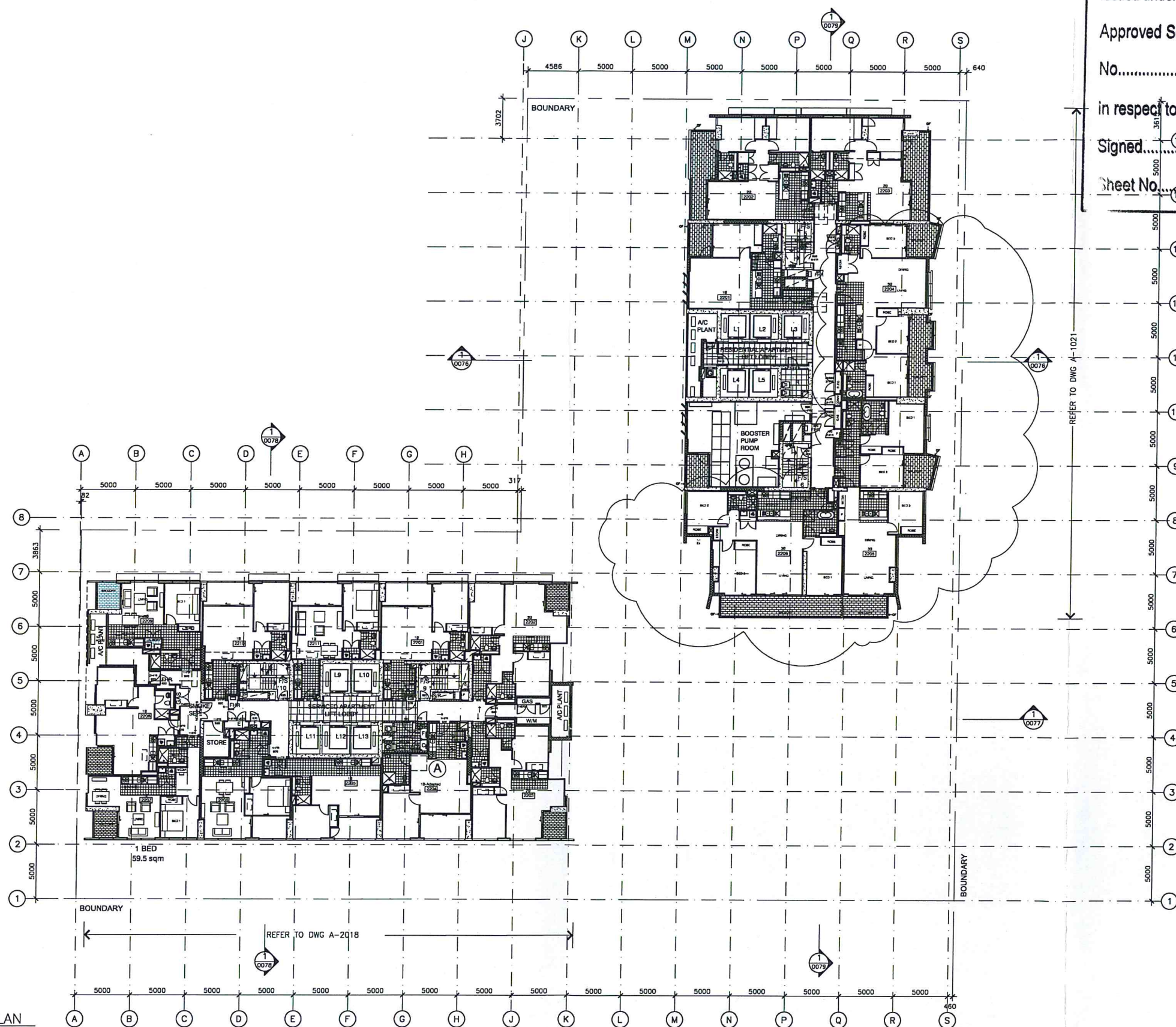
MERITON THOMAS STREET

Thomas Street/ Albert Avenue
Chatswood NSW 2067

Project No. 212007
Scale: 1:200@A1; 1:400@A3
Date: APRIL 2013
Drawn: DH
Checked: EA
Approved: SP

LEVEL 22 PLAN

A0038 9
FOR APPROVAL



1 LEVELS 22 FLOOR PLAN
1:200

ALL SERVICES INFORMATION SHOWN IS DESIGN INTENT ONLY. FOR ALL SERVICES CONSTRUCTION INFORMATION PLEASE REFER TO RELEVANT SUBCONTRACTORS DRAWINGS AND SPECIFICATIONS.

LEGEND		
E/A - EXHAUST AIR RISER	PS - PUBLIC STAIR	B - BOLLARD
S/A - SUPPLY AIR	F/S - FIRE STAIR	ST - STORAGE
S/P - STAIR PRESSURISATION	L1 - LIFT 1	
L - LINEN CUPBOARD	PL1 - PUBLIC LIFT	
C - COAT CUPBOARD	E - ELECTRICAL	
R - RECYCLE WASTE ROOM	TM - TICKET MACHINE	

	Keyzo
--	-------

NSW GOVERNMENT
Planning

Issued under the Environmental Planning and Assessment Act 1979

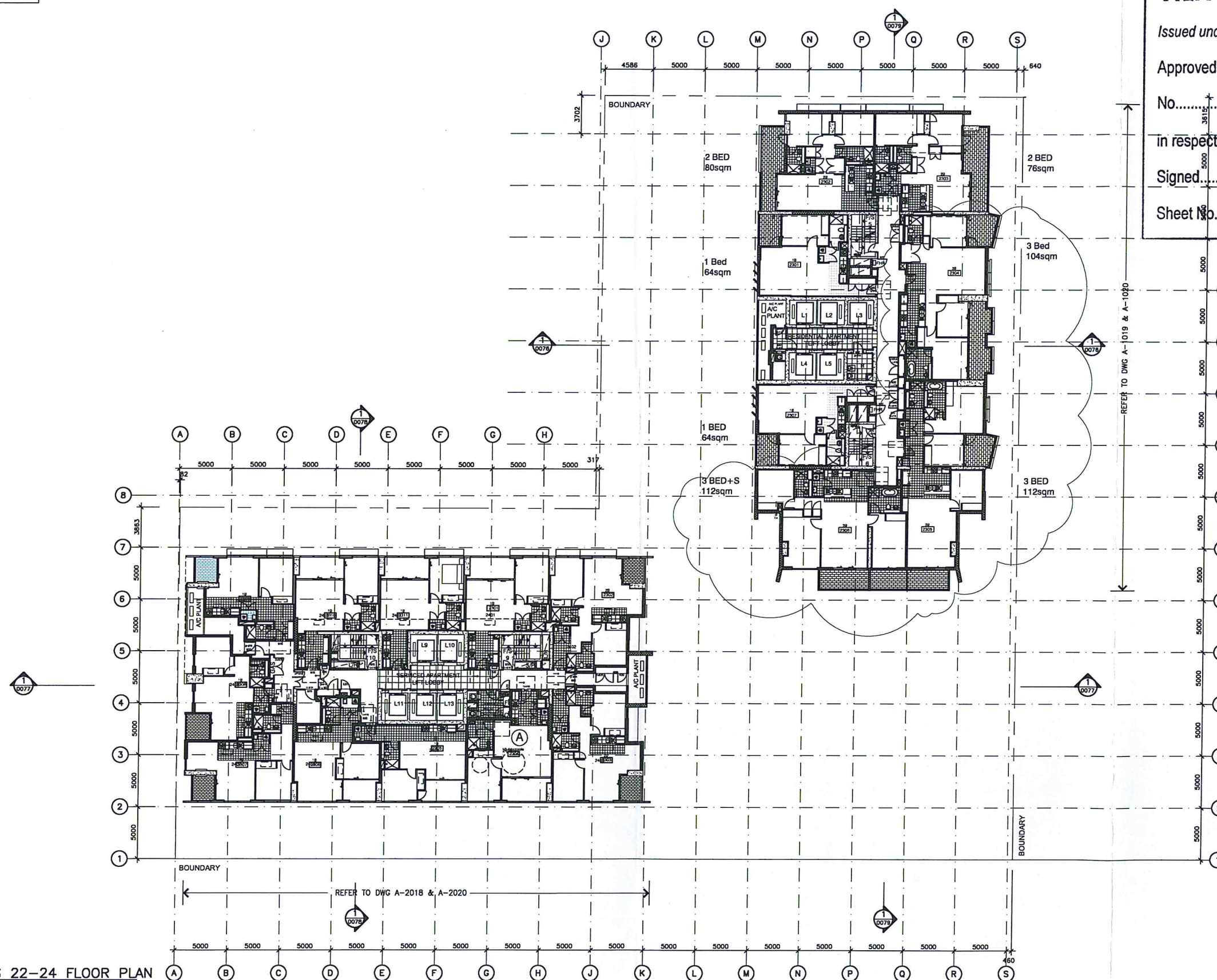
Approved Section 75W Modification Application

No. 11 granted on the 10/09/2014

in respect to MP 09 0066 Revision

Signed MB

Sheet No. 4 of 12



3	SECTION 75W 2x 2B & 1B CONVERTED INTO 2x 3B	23.05.2014
2	LAYOUT RE-DESIGNED EXTENTS OF TILE FINISH COORDINATED	11.03.2014
1	ISSUE FOR CONSTRUCTION CERTIFICATE	03.02.2014

Do not scale from drawings. Verify all dimensions on site before commencing work. Copying or the reproduction of this drawing is strictly prohibited without the consent of PTW Architects P/L.

Client
Meriton Group
Level 11 Meriton Tower,
528 Kent St,
Sydney NSW 2000

Architect

PTW Architects

PTW

Level 13, 9 Castlereagh St
Sydney NSW Australia 2000
T 612 9232 5877
F 612 9221 4139
www.pjw.com.au

Contractor

Consultants	
-------------	--

Planner
Structural
Services
Landscape
Acoustics
Traffic

MERITON THOMAS STREET

Thomas Street/ Albert Avenue
Chatswood NSW 2067

Project No.	212007
Scale:	1:200@A1;1:400@A3
Date:	APRIL 2013
Drawn	DH
Checked	EA
Approved	SP

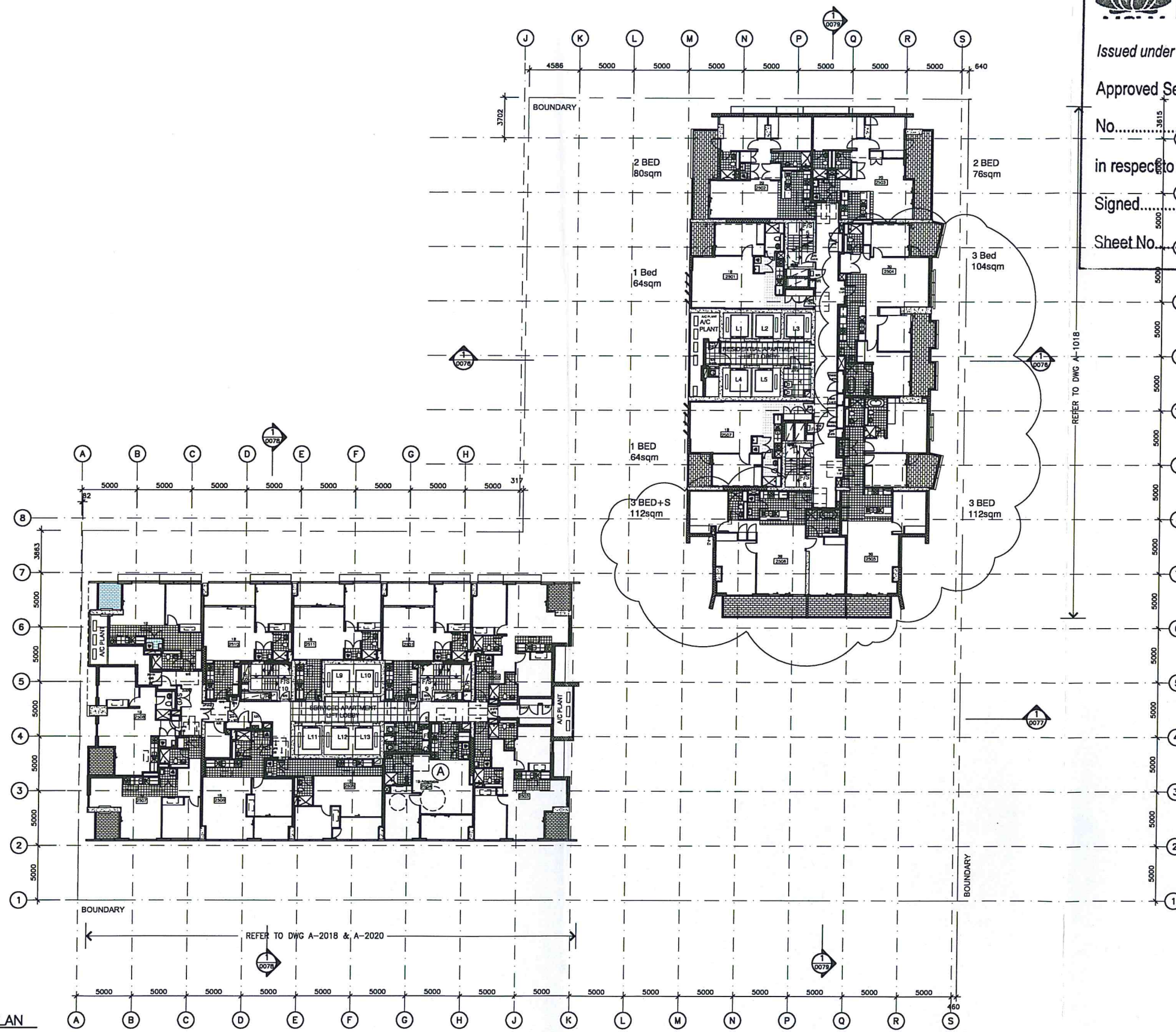
LEVELS 23-24 PLAN

A0039 3
FOR APPROVAL

THIS DRAWING IS SUBJECT TO SERVICES COORDINATION

ALL SERVICES INFORMATION SHOWN IS DESIGN INTENT ONLY. FOR ALL SERVICES CONSTRUCTION INFORMATION PLEASE REFER TO RELEVANT SUBCONTRACTORS DRAWINGS AND SPECIFICATIONS.

LEGEND
 E/A - EXHAUST AIR RISER P/S - PUBLIC STAIR B - BOLLARD
 S/A - SUPPLY AIR F/S - FIRE STAIR ST - STORAGE
 S/P - STAIR PRESSURISATION L1 - LIFT 1
 L - LINEN CUPBOARD PL1 - PUBLIC LIFT
 C - COAT CUPBOARD E - ELECTRICAL
 R - RECYCLE WASTE ROOM TM - TICKET MACHINE



1 LEVELS 25 FLOOR PLAN
1:200



NSW GOVERNMENT
Planning

Issued under the Environmental Planning and Assessment Act 1979

Approved Section 75W Modification Application

No. 11 granted on the 10/09/2014

in respect to MP 09 0066

Signed MB

Sheet No. 5 of 12

Revisions

3 SECTION 75W
2x 28 & 18 CONVERTED INTO 2x 36 23.05.2014
2 LAYOUT RE-DESIGNED 12.03.2014
EXTENTS OF FINE FINISH COORDINATED
1 ISSUE FOR CONSTRUCTION CERTIFICATE 03.02.2014

Do not scale from drawings. Verify all dimensions on site before commencing work. Copying or the reproduction of this drawing is strictly prohibited without the consent of PTW Architects P/L.

Client
Meriton Group
Level 11 Meriton Tower,
528 Kent St,
Sydney NSW 2000

Architect

PTW Architects **PTW**
Level 13, 9 Castlereagh St
Sydney NSW Australia 2000
T 612 9232 5877
F 612 9221 4139
www.ptw.com.au

Contractor

Consultants

Planner -
Structural -
Services -
Landscape -
Acoustics -
Traffic -

MERITON THOMAS STREET
Thomas Street/ Albert Avenue
Chatswood NSW 2067

Project No. 212007
Scale: 1:200@A1;1:400@A3
Date: APRIL 2013
Drawn: DH
Checked: EA
Approved: SP

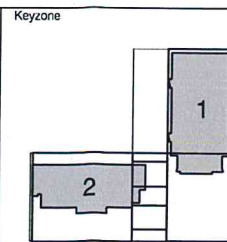
LEVEL 25 PLAN

A0041 **3**
FOR APPROVAL

THIS DRAWING IS SUBJECT TO SERVICES COORDINATION

ALL SERVICES INFORMATION SHOWN IS DESIGN INTENT ONLY. FOR ALL SERVICES CONSTRUCTION INFORMATION PLEASE REFER TO RELEVANT SUBCONTRACTORS DRAWINGS AND SPECIFICATIONS.

LEGEND
 E/A - EXHAUST AIR RISER PS - PUBLIC STAIR B - BOLLARD
 S/A - SUPPLY AIR F/S - FIRE STAIR ST - STORAGE
 S/P - STAIR PRESSURISATION L1 - LIFT 1
 L - LINEN CUPBOARD PL1 - PUBLIC LIFT
 C - COAT CUPBOARD E - ELECTRICAL
 R - RECYCLE WASTE ROOM TM - TICKET MACHINE



NSW GOVERNMENT
Planning

Issued under the Environmental Planning and Assessment Act 1979

Approved Section 75W Modification Application

No. 11 granted on the 10/09/2014

in respect of MP 09-0066

Signed MB

Sheet No. 6 of 12

SAFETY NOTES:
 FOR LEVEL 27 REFER TO NATIONAL HEIGHT AND
 SAFETY DRAWINGS FOR DETAILS - NHAS BUILDING
 1 LEVEL 27, NHAS SOUTH ELEVATION, NHAS
 EAST ELEVATION, NHAS WEST ELEVATION

Revisions

3 SECTION 75W
 2x 28 & 18 CONVERTED INTO 2x 36 23.05.2014
 2 LAYOUT RE-DESIGNED 12.03.2014
 EXTENTS OF TILE FINISH COORDINATED
 1 ISSUE FOR CONSTRUCTION CERTIFICATE 03.02.2014

Do not scale from drawings. Verify all
 dimensions on site before commencing
 work. Copying or the reproduction of this
 drawing is strictly prohibited without the
 consent of PTW Architects P/L.

Client
 Meriton Group
 Level 11 Meriton Tower,
 528 Kent St.
 Sydney NSW 2000

Architect
 PTW Architects
 Level 13, 9 Castlereagh St
 Sydney NSW Australia 2000
 T 612 9232 5877
 F 612 9221 4139
 www.ptw.com.au

Contractor

Consultants

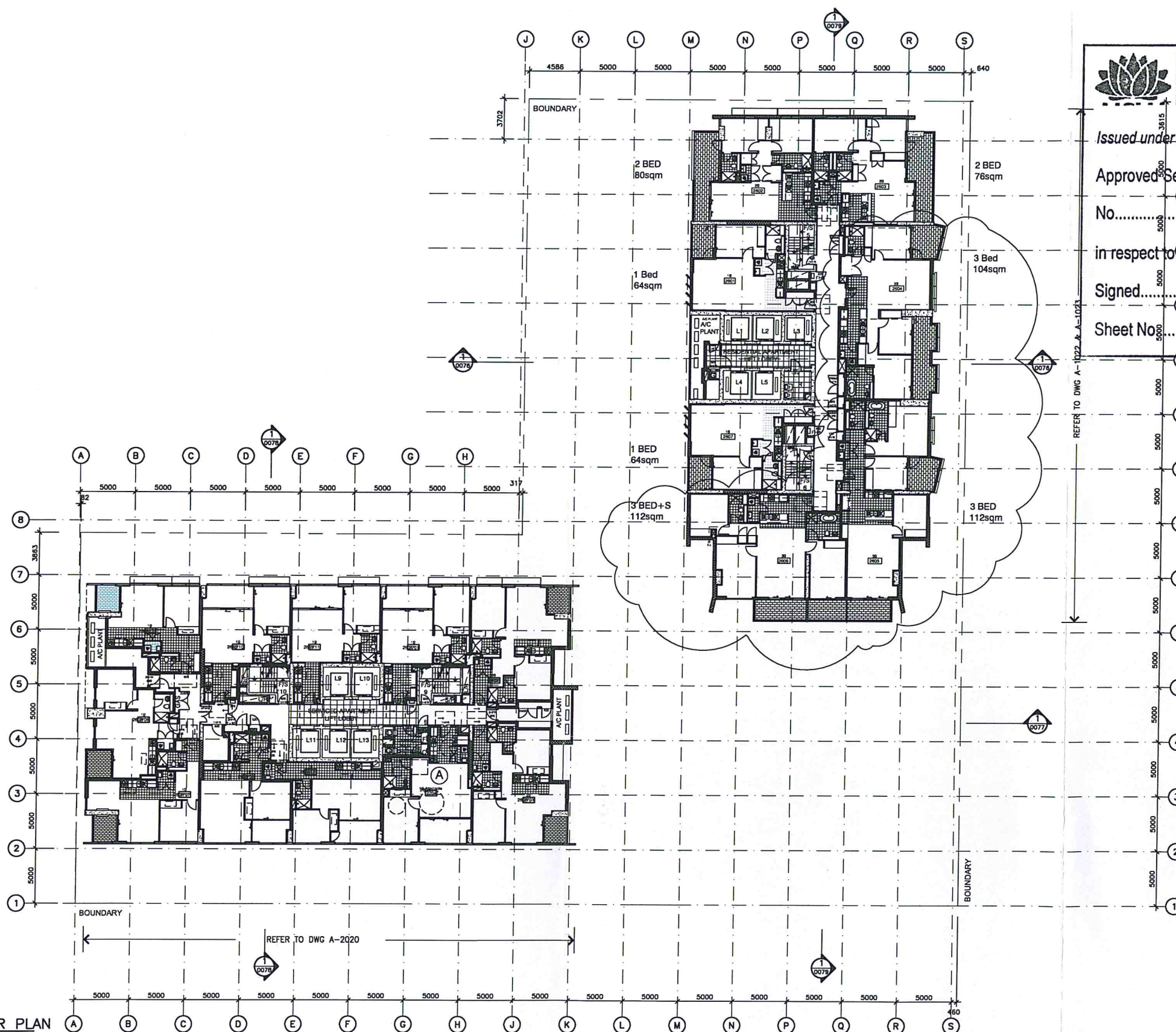
Planner
 Structural
 Services
 Landscape
 Acoustics
 Traffic

MERITON THOMAS STREET
 Thomas Street/ Albert Avenue
 Chatswood NSW 2067

Project No. 212007
 Scale: 1:200@A1; 1:400@A3
 Date: APRIL 2013
 Drawn: DH
 Checked: EA
 Approved: SP

LEVELS 26-27 PLAN

A0042 3
 FOR APPROVAL



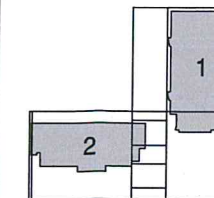
1 LEVELS 26-27 FLOOR PLAN
 1:200

THIS DRAWING IS SUBJECT TO SERVICES COORDINATION

ALL SERVICES INFORMATION SHOWN IS DESIGN INTENT ONLY. FOR ALL SERVICES CONSTRUCTION INFORMATION PLEASE REFER TO RELEVANT SUBCONTRACTORS DRAWINGS AND SPECIFICATIONS.

LEGEND
 E/A - EXHAUST AIR RISER PS - PUBLIC STAIR B - BOLLARD
 S/A - SUPPLY AIR F/S - FIRE STAIR ST - STORAGE
 S/P - STAIR PRESSURISATION L1 - LIFT 1 OF - OVER FLOW
 L - LINEN CUPBOARD PL1 - PUBLIC LIFT
 C - COAT CUPBOARD E - ELECTRICAL
 R - RECYCLE WASTE ROOM TM - TICKET MACHINE

Keyzone



**NSW GOVERNMENT
Planning**

Issued under the Environmental Planning and Assessment Act 1979

Approved Section 75W Modification Application

No. 11 granted on the 10/09/2014

in respect to MP 09-0066

Signed MB

Sheet No 7 of 12

3 SECTION 75W
2x 2B & 1B CONVERTED INTO 2x 3B 23.05.2014
2 LAYOUT RE-DESIGNED 12.03.2014
EXTENTS OF FILE FINISH COORDINATED
1 ISSUE FOR CONSTRUCTION CERTIFICATE 03.02.2014

Do not scale from drawings. Verify all dimensions on site before commencing work. Copying or the reproduction of this drawing is strictly prohibited without the consent of PTW Architects P/L.

Client
Meriton Group
Level 11 Meriton Tower,
528 Kent St,
Sydney NSW 2000

Architect
PTW Architects
Level 13, 9 Castlereagh St
Sydney NSW Australia 2000
T 612 9232 5877
F 612 9221 4139
www.ptw.com.au

Contractor

Consultants

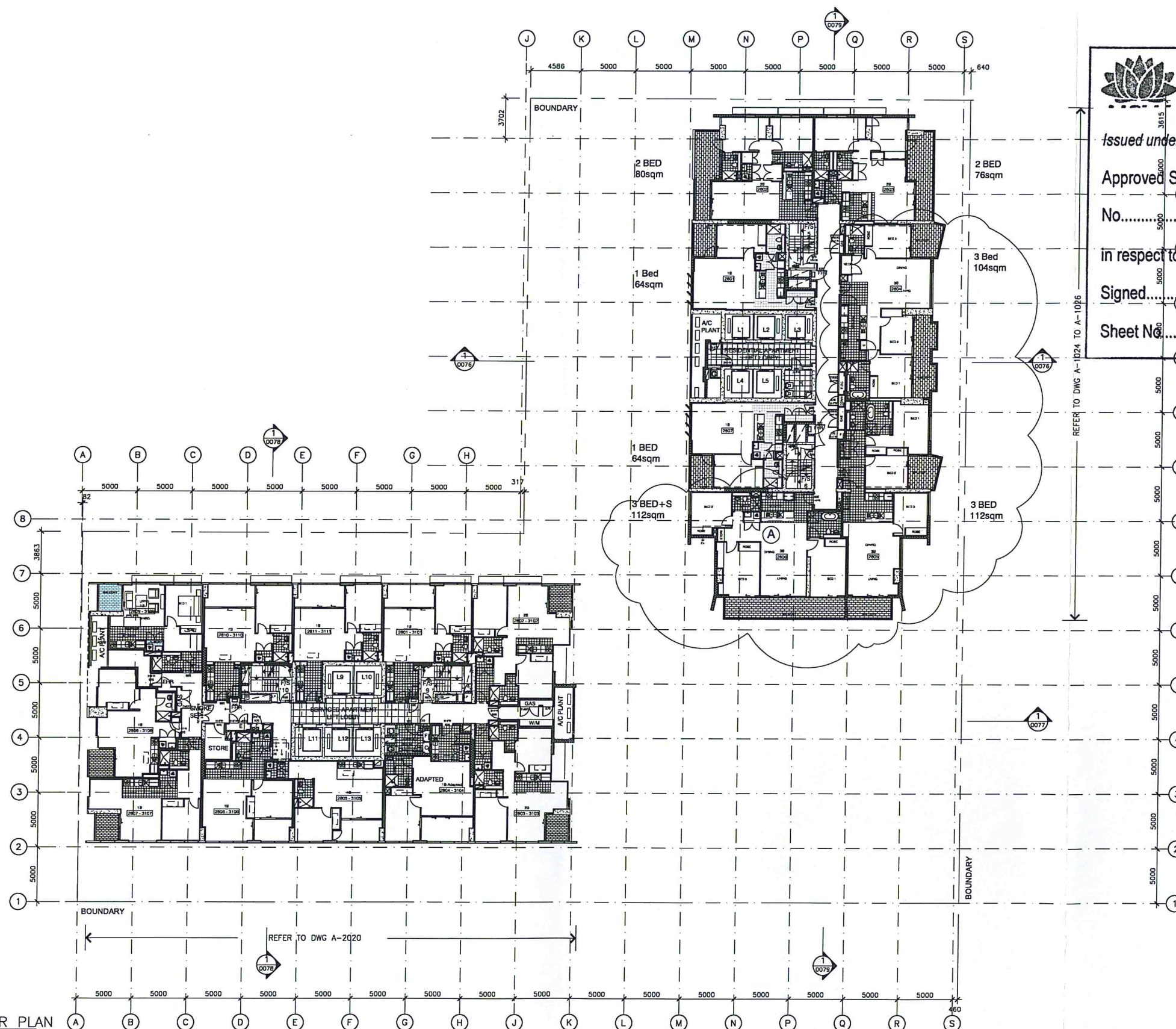
Planner
Structural
Services
Landscape
Acoustics
Traffic

MERITON THOMAS STREET
Thomas Street/ Albert Avenue
Chatswood NSW 2067

Project No. 212007
Scale: 1:200 @ A1; 1:400 @ A3
Date: APRIL 2013
Drawn: DH
Checked: EA
Approved: SP

LEVELS 28-31 PLAN

A0044 3
FOR APPROVAL

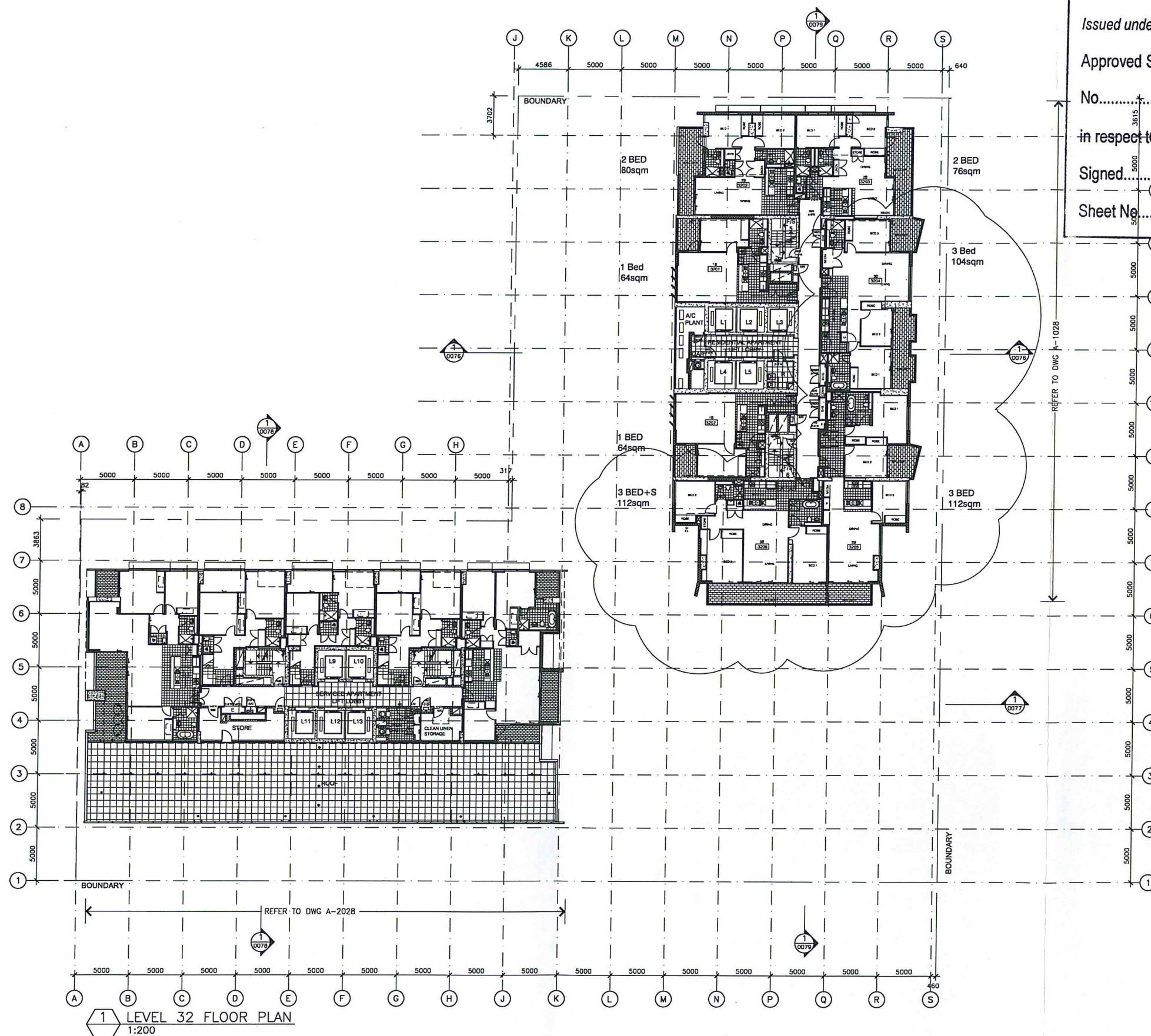


1 LEVELS 28-31 FLOOR PLAN
1:200

THIS DRAWING IS SUBJECT TO SERVICES COORDINATION

ALL SERVICES INFORMATION SHOWN IS DESIGN INTENT ONLY. FOR ALL SERVICES CONSTRUCTION INFORMATION PLEASE REFER TO RELEVANT SUBCONTRACTORS DRAWINGS AND SPECIFICATIONS.

LEGEND		
E/A - EXHAUST AIR RISER	PS - PUBLIC STAIR	B - BOLLARD
S/A - SUPPLY AIR	F/S - FIRE STAIR	ST - STORAGE
S/P - STAIR PRESSURISATION	L1 - LIFT 1	OF - OVER FLOW
L - LINEN CUPBOARD	PL1 - PUBLIC LIFT	
C - COAT CURBOARD	E - ELECTRICAL	
R - RECYCLE WASTE ROOM	TM - TICKET MACHINE	



NSW GOVERNMENT
Planning

Issued under the Environmental Planning and Assessment Act 1979

Approved Section 75W Modification Application

No. 11 granted on the 10/09/2014

in respect to MP 09 0066

Signed MB

Sheet No 8 of 12

10 SECTION 75W	23.05.2014
2x 2B & 1B CONVERTED INTO 2x 3B	
9 SIGNAGE ALLOCATED	24.03.2014
8 LAYOUT RE-DESIGNED	12.03.2014
EXTENTS OF TILE FINISH COORDINATED	
7 ISSUE FOR CONSTRUCTION CERTIFICATE	3.02.2014
6 COORDINATED WITH REVISED MOD. 6	12.12.2013
DWG TITLE CHANGED FROM L34-38	
TO L32. DWG REFERENCE NO. UPDATED	
5 GENERAL UPDATE	25.10.2013
4 LIFT TO BLDG 1 ADDED	28.08.2013
3 ISSUE FOR CO-ORDINATION	20.08.2013
2 GLASS BRIDGE INTRODUCED	23.05.2013
1 ISSUE FOR CO-ORDINATION	01.05.2013

Do not scale from drawings. Verify all dimensions on site before commencing work. Copying or the reproduction of this drawing is strictly prohibited without the consent of PTW Architects P/L.

Client
Meriton Group
Level 11 Meriton Tower,
528 Kent St,
Sydney NSW 2000

Architect
PTW Architects
Level 13, 9 Castlereagh St
Sydney NSW Australia 2000
T 612 9232 5877
F 612 9221 4139
www.ptw.com.au

Contractor

Consultants

Planner -
Structural -
Services -
Landscape -
Acoustics -
Traffic -

MERITON THOMAS STREET
Thomas Street/ Albert Avenue
Chatswood NSW 2067

Project No. 212007
Scale: 1:200@A1; 1:400@A3
Date: APRIL 2013
Drawn: DH
Checked: EA
Approved: SP

LEVEL 32 PLAN

A0048 10
FOR APPROVAL

THIS DRAWING IS SUBJECT TO SERVICES COORDINATION

ALL SERVICES INFORMATION SHOWN IS DESIGN INTENT ONLY. FOR ALL SERVICES CONSTRUCTION INFORMATION PLEASE REFER TO RELEVANT SUBCONTRACTORS DRAWINGS AND SPECIFICATIONS.

LEGEND		
E/A - EXHAUST AIR RISER	PS - PUBLIC STAIR	B - BOLLARD
S/A - SUPPLY AIR	F/S - FIRE STAIR	ST - STORAGE
SP - STAIR PRESSURISATION	L1 - LIFT 1	OF - OVER FLOW
L - LINEN CUPBOARD	PL1 - PUBLIC LIFT	
C - COAT CUPBOARD	E - ELECTRICAL	
R - RECYCLE WASTE ROOM	TM - TICKET MACHINE	



NSW GOVERNMENT
Planning

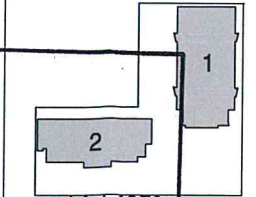
Issued under the Environmental Planning and Assessment Act 1979

Approved Section 75W Modification Application

No. 11 granted on the 10/04/2013
In respect to MP 09-0066

Signed MB
Sheet No. 9 of 12

Keyzone



SAFETY NOTES:
FOR RESIDENTIAL APARTMENT REFER TO NATIONAL HEIGHT AND SAFETY DRAWING FOR DETAILS - 'NHSAS SOUTH ELEVATION'
FOR SERVICES APARTMENT REFER TO NATIONAL HEIGHT AND SAFETY DRAWING FOR DETAILS - 'NHSAS SOUTH ELEVATION'

Revisions

10 SECTION 75W	23.05.2014
2x 2B & 1B CONVERTED INTO 2x 3B	
9 SAFETY NOTES ADDED	20.05.2014
8 ISSUED FOR CONSTRUCTION	12.03.2014
7 ISSUE FOR CONSTRUCTION CERTIFICATE	03.02.2014
6 COORDINATED WITH REVISED MOD. 6	12.12.2013
DWG TITLE CHANGED FROM L37 TO L33. DWG REFERENCE NO. UPDATED	
5 GENERAL UPDATE	25.10.2013
4 LIFT TO BLDG 1 ADDED	28.08.2013
3 ISSUE FOR CO-ORDINATION	20.08.2013
2 GLASS BRIDGE INTRODUCED	23.05.2013
1 ISSUE FOR CO-ORDINATION	01.05.2013

Do not scale from drawings. Verify all dimensions on site before commencing work. Copying or the reproduction of this drawing is strictly prohibited without the consent of PTW Architects P/L.

Client
Meriton Group
Level 11 Meriton Tower,
528 Kent St.
Sydney NSW 2000

Architect
PTW Architects
Level 13, 9 Castlereagh St
Sydney NSW Australia 2000
T 612 9232 5877
F 612 9221 4139
www.ptw.com.au

Contractor

Consultants

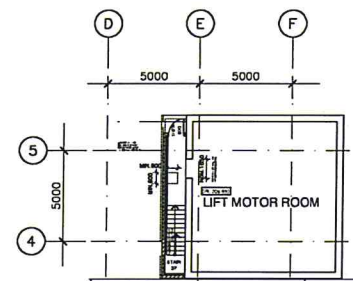
Planner -
Structural -
Services -
Landscape -
Acoustics -
Traffic -

MERITON THOMAS STREET
Thomas Street/ Albert Avenue
Chatswood NSW 2067

Project No. 212007
Scale: 1:200 @ A1; 1:400 @ A3
Date: APRIL 2013
Drawn: DH
Checked: EA
Approved: SP

LEVEL 33 PLAN

A0049 9
FOR APPROVAL



2 LIFT MOTOR ROOM
1:200

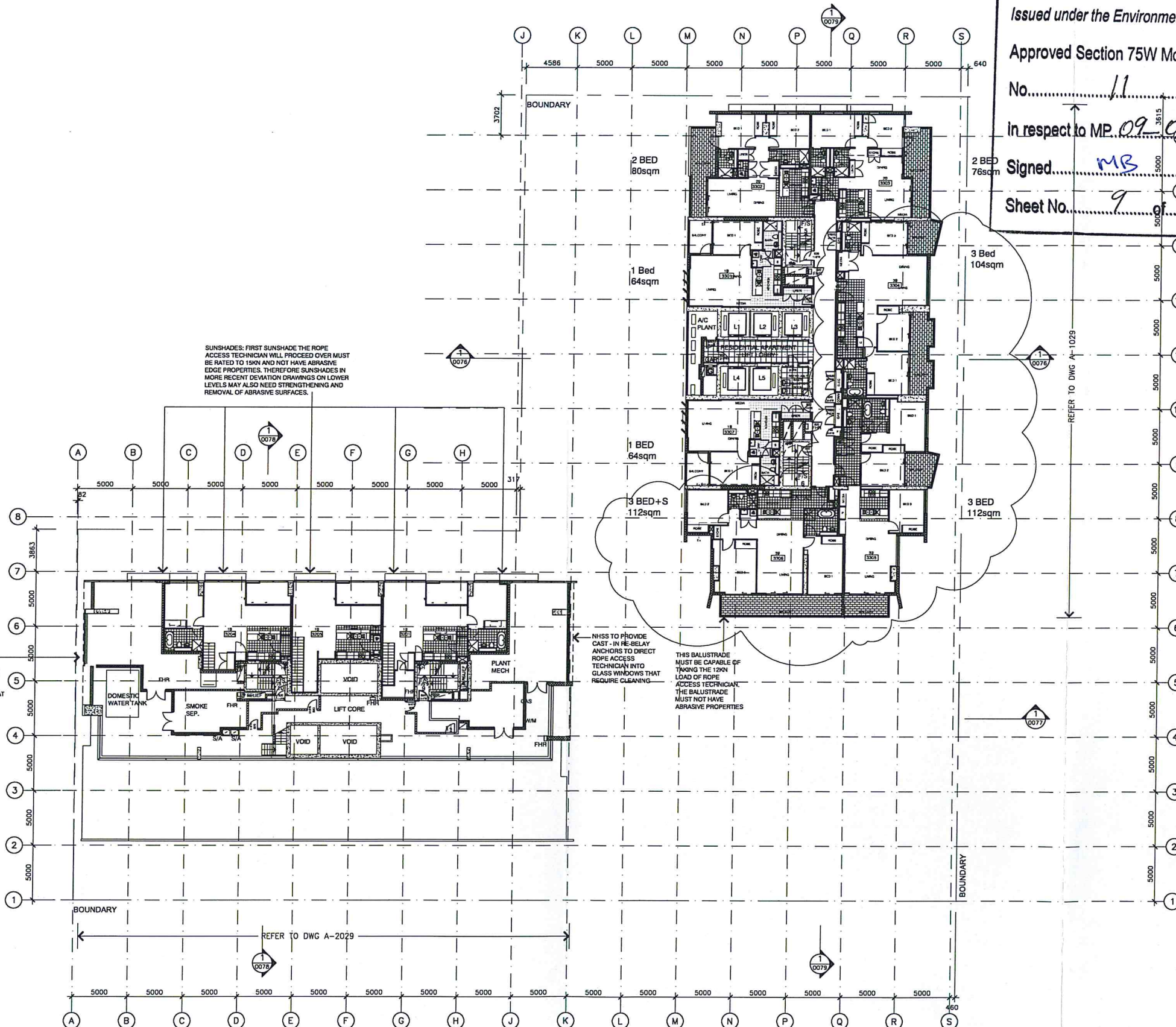
NHSS TO PROVIDE CAST-IN RE-BELAY ANCHORS TO DIRECT ROPE ACCESS TECHNICIAN INTO GLASS WINDOWS THAT REQUIRE CLEANING

SUNSHADES: FIRST SUNSHADE THE ROPE ACCESS TECHNICIAN WILL PROCEED OVER MUST BE RATED TO 15kN AND NOT HAVE ABRASIVE EDGE PROPERTIES. THEREFORE SUNSHADES IN MORE RECENT DEVIATION DRAWINGS ON LOWER LEVELS MAY ALSO NEED STRENGTHENING AND REMOVAL OF ABRASIVE SURFACES.

NHSS TO PROVIDE CAST-IN RE-BELAY ANCHORS TO DIRECT ROPE ACCESS TECHNICIAN INTO GLASS WINDOWS THAT REQUIRE CLEANING

THIS BALUSTRADE MUST BE CAPABLE OF TAKING THE 12kN LOAD OF ROPE ACCESS TECHNICIAN. THE BALUSTRADE MUST NOT HAVE ABRASIVE PROPERTIES

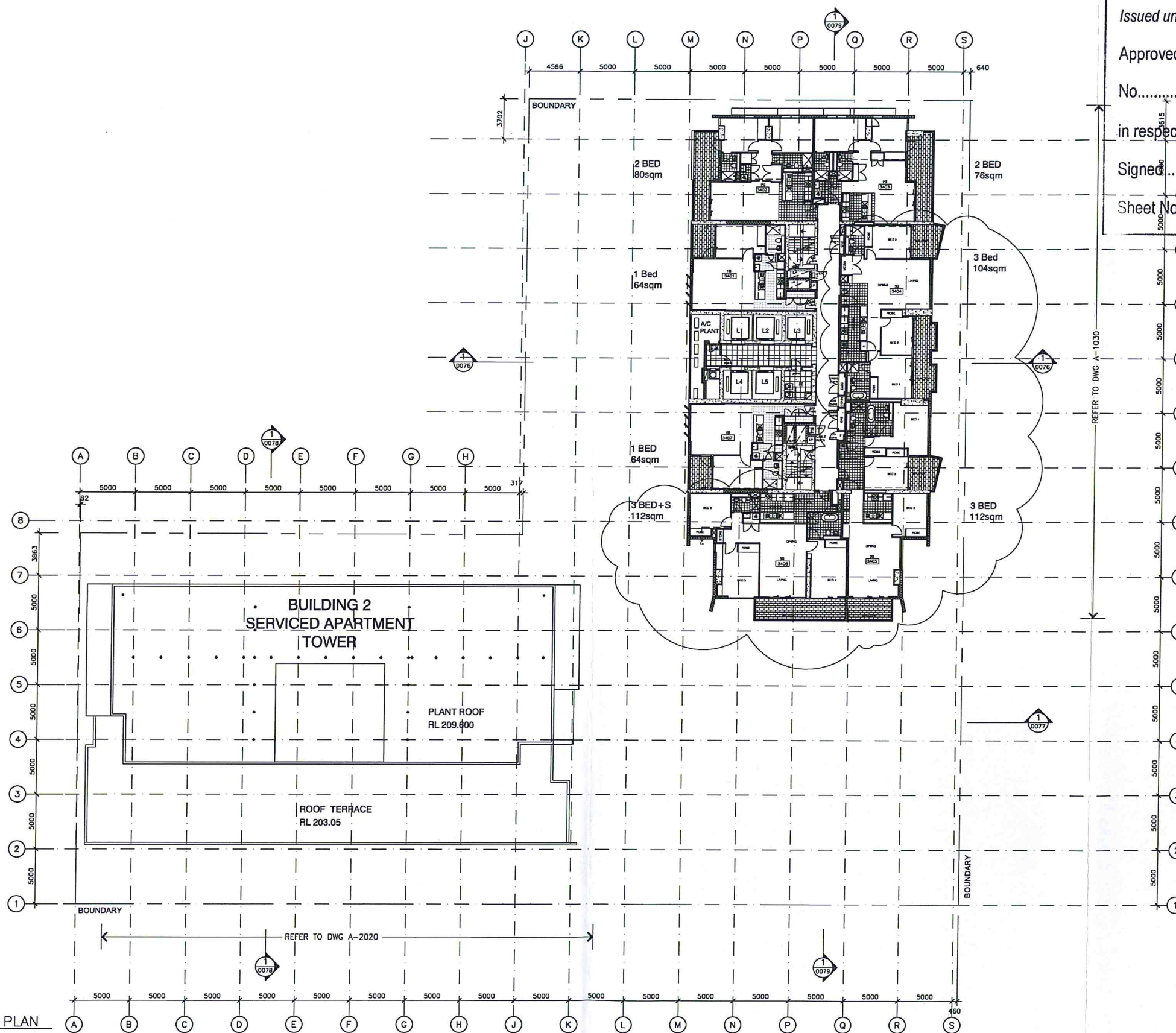
1 LEVEL 33 FLOOR PLAN
1:200



THIS DRAWING IS SUBJECT TO SERVICES COORDINATION

ALL SERVICES INFORMATION SHOWN IS DESIGN INTENT ONLY. FOR ALL SERVICES CONSTRUCTION INFORMATION PLEASE REFER TO RELEVANT SUBCONTRACTORS DRAWINGS AND SPECIFICATIONS.

LEGEND		
E/A - EXHAUST AIR RISER	PS - PUBLIC STAIR	B - BOLLARD
S/A - SUPPLY AIR	F/S - FIRE STAIR	ST - STORAGE
S/P - STAIR PRESSURISATION	L1 - LIFT 1	OF - OVER FLOW
L - LINEN CUPBOARD	PL1 - PUBLIC LIFT	
C - COAT CUPBOARD	E - ELECTRICAL	
R - RECYCLE WASTE ROOM	TM - TICKET MACHINE	



1 LEVELS 34 FLOOR PLAN
1:200



NSW GOVERNMENT
Planning

Issued under the Environmental Planning and Assessment Act 1979

Approved Section 75W Modification Application

No. 11 granted on the 10/09/2014

in respect to MP 09-0066

Signed *MS*

Sheet No. 10 of 12

Revisions

9 SECTION 75W	23.05.2014
2x 2B & 1B CONVERTED INTO 2x 3B	
8 LAYOUT RE-DESIGNED	12.02.2014
EXTENTS OF TILE FRESH COORDINATED	
7 ISSUED FOR CONSTRUCTION CERTIFICATE	03.02.2014
6 DWG TITLE CHANGED FROM L38-45	12.12.2013
TO L34-36	
5 LIFT TO BLDG 1 ADDED	28.08.2013
4 ISSUE FOR CO-ORDINATION	20.08.2013
3 GENERAL UPDATE	01.08.2013
2 GLASS BRIDGE INTRODUCED	23.05.2013
1 ISSUE FOR CO-ORDINATION	01.05.2013

Do not scale from drawings. Verify all dimensions on site before commencing work. Copying or the reproduction of this drawing is strictly prohibited without the consent of PTW Architects P/L.

Client
Meriton Group
Level 11 Meriton Tower,
528 Kent St,
Sydney NSW 2000

Architect
PTW
PTW Architects
Level 13, 9 Castlereagh St
Sydney NSW Australia 2000
T 612 9232 5877
F 612 9221 4139
www.ptw.com.au

Contractor

Consultants

Planner -
Structural -
Services -
Landscape -
Acoustics -
Traffic -

MERITON THOMAS STREET
Thomas Street/ Albert Avenue
Chatswood NSW 2067

Project No. 212007
Scale: 1:200@A1;1:400@A3
Date: APRIL 2013
Drawn: DH
Checked: EA
Approved:

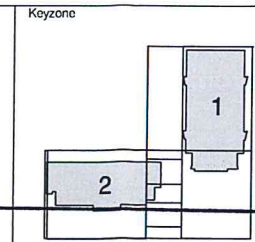
LEVELS 34 PLAN

A0050 9
FOR APPROVAL

THIS DRAWING IS SUBJECT TO SERVICES COORDINATION

ALL SERVICES INFORMATION SHOWN IS DESIGN INTENT ONLY. FOR ALL SERVICES CONSTRUCTION INFORMATION PLEASE REFER TO RELEVANT SUBCONTRACTORS DRAWINGS AND SPECIFICATIONS.

LEGEND
E/A - EXHAUST AIR RISER
S/A - SUPPLY AIR
S/P - STAIR PRESSURISATION
L - LINEN CUPBOARD
C - COAT CUPBOARD
R - RECYCLE WASTE ROOM
PS - PUBLIC STAIR
F/S - FIRE STAIR
L1 - LIFT 1
PL1 - PUBLIC LIFT
E - ELECTRICAL
TM - TICKET MACHINE
B - BOLLARD
ST - STORAGE
OF - OVER FLOW



NSW GOVERNMENT
Planning

Issued under the Environmental Planning and Assessment Act 1979

Approved Section 75W Modification Application

No. 11 granted on the 10/09/2014

in respect to MP 09 00.66

Signed M.B.

Sheet No. 11 of 12

Revisions

3 SECTION 75W
2x 28 & 18 CONVERTED INTO 2x 38 23.05.2014
2 LAYOUT RE-DESIGNED
EXTENTS OF TILE FINISH COORDINATED 12.03.2014
1 ISSUED FOR CONSTRUCTION CERTIFICATE 03.02.2014

Do not scale from drawings. Verify all dimensions on site before commencing work. Copying or the reproduction of this drawing is strictly prohibited without the consent of PTW Architects P/L.

Client
Meriton Group
Level 11 Meriton Tower,
528 Kent St,
Sydney NSW 2000

Architect
PTW Architects
Level 13, 9 Castlereagh St
Sydney NSW Australia 2000
T 612 9232 5877
F 612 9221 4139
www.ptw.com.au

Contractor

Consultants

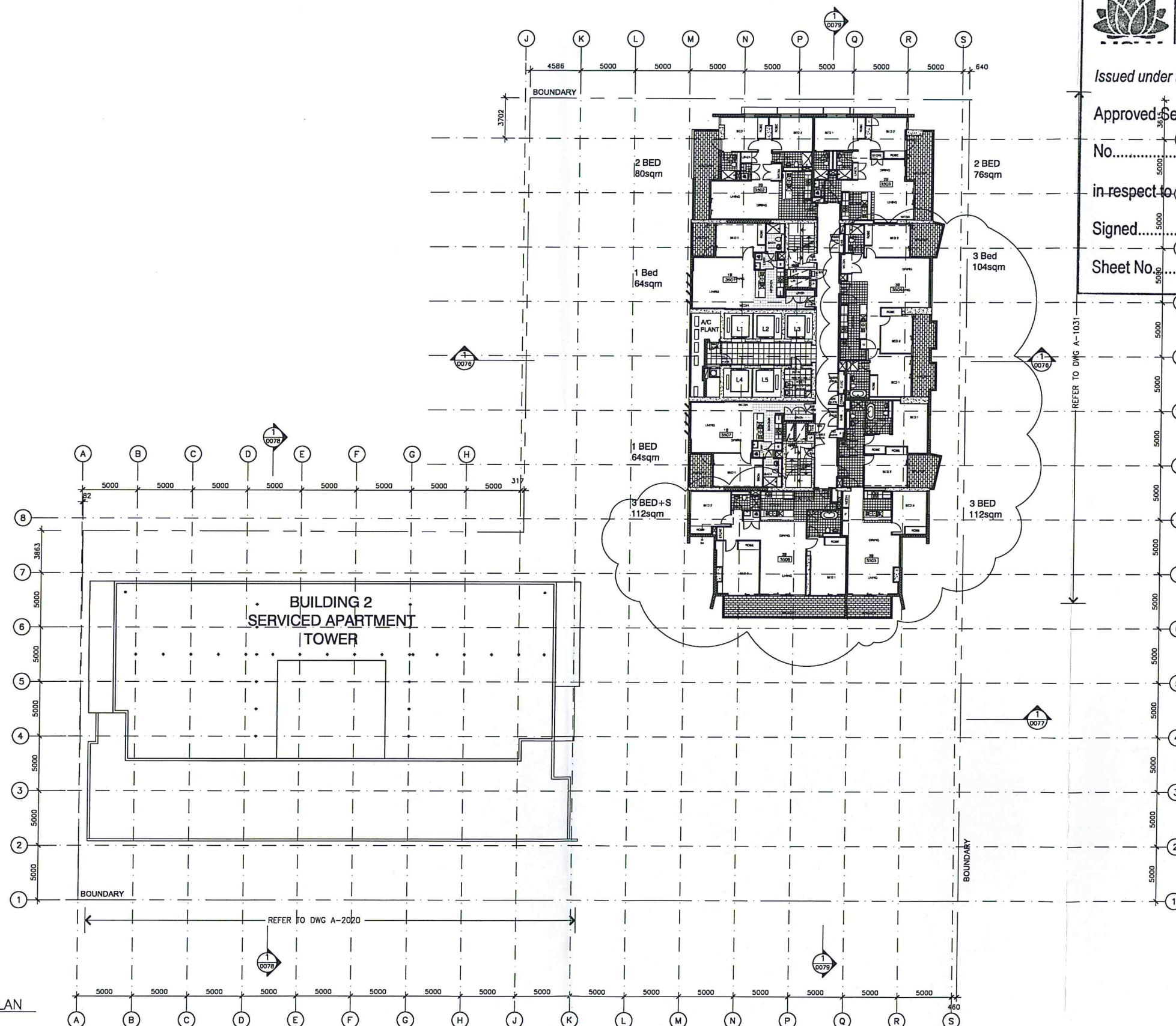
Planner
Structural
Services
Landscape
Acoustics
Traffic

MERITON THOMAS STREET
Thomas Street/ Albert Avenue
Chatswood NSW 2067

Project No. 212007
Scale: 1:200@A1;1:400@A3
Date: APRIL 2013
Drawn: DH
Checked: EA
Approved:

LEVELS 35 PLAN

A0051 3
FOR APPROVAL

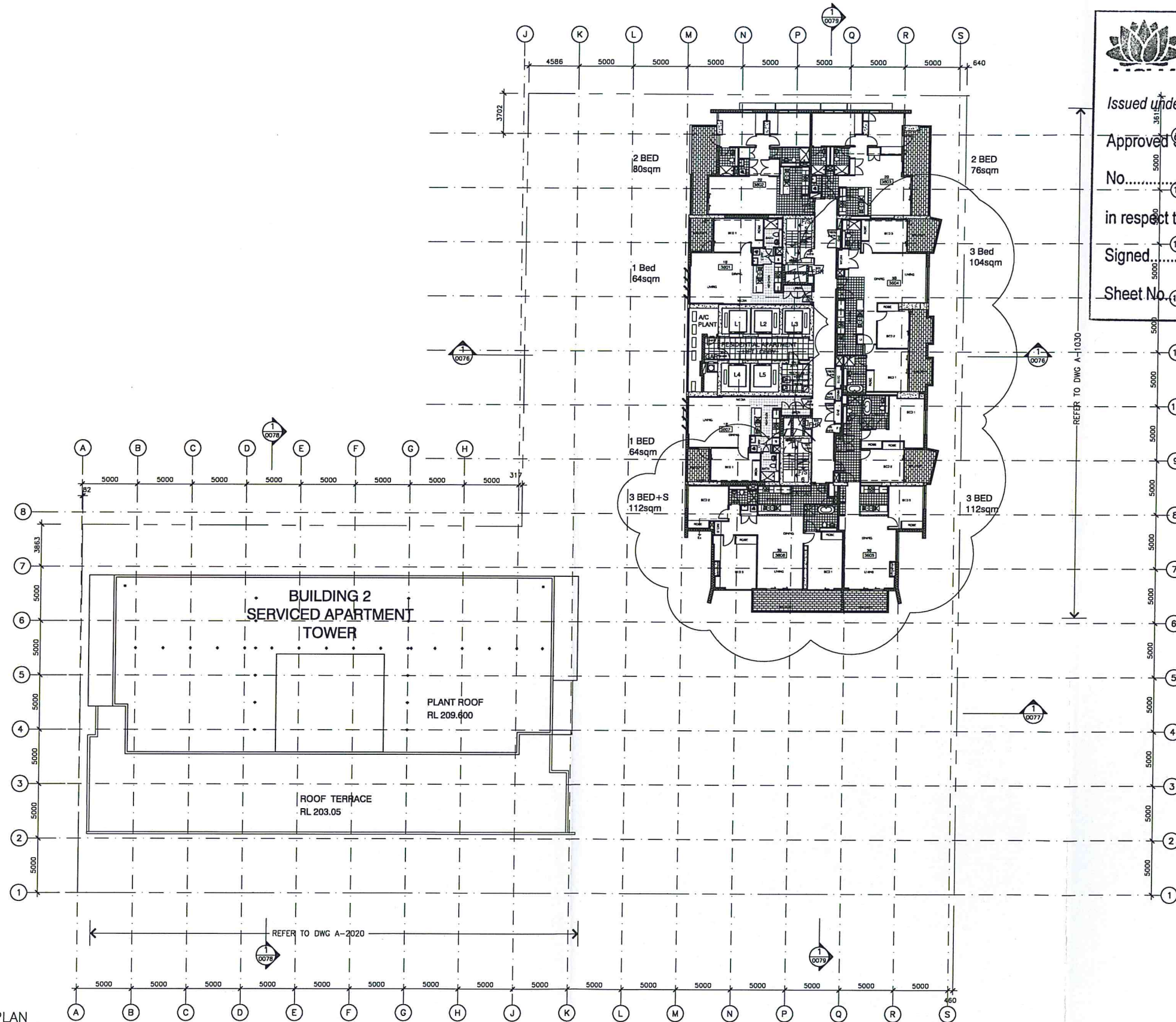


1 LEVELS 35 FLOOR PLAN
1:200

THIS DRAWING IS SUBJECT TO SERVICES COORDINATION

ALL SERVICES INFORMATION SHOWN IS DESIGN INTENT ONLY. FOR ALL SERVICES CONSTRUCTION INFORMATION PLEASE REFER TO RELEVANT SUBCONTRACTORS DRAWINGS AND SPECIFICATIONS.

E/A - EXHAUST AIR RISER	PS - PUBLIC STAIR	B - BOLLARD
S/A - SUPPLY AIR	F/S - FIRE STAIR	ST - STORAGE
S/P - STAIR PRESSURISATION	L1 - LIFT 1	OF - OVER FLOW
L - LINEN CUPBOARD	PL1 - PUBLIC LIFT	
C - COAT CUPBOARD	E - ELECTRICAL	
R - RECYCLE WASTE ROOM	TM - TICKET MACHINE	



1 LEVELS 36 FLOOR PLAN
1:200



NSW GOVERNMENT
Planning

Issued under the Environmental Planning and Assessment Act 1979

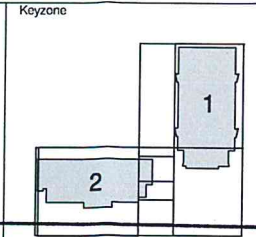
Approved Section 75W Modification Application

No. 11 granted on the 10/09/2014

in respect to MP 09.00.66

Signed: MB

Sheet No. 12 of 12



2 SECTION 75W
2x2B & 1B CONVERTED INTO 2x3B 23.05.2014
1 ISSUED FOR CONSTRUCTION CERTIFICATE 03.02.2014

Do not scale from drawings. Verify all dimensions on site before commencing work. Copying or the reproduction of this drawing is strictly prohibited without the consent of PTW Architects P/L.

Client
Meriton Group
Level 11 Meriton Tower,
528 Kent St,
Sydney NSW 2000

Architect
PTW Architects
Level 13, 9 Castlereagh St
Sydney NSW Australia 2000
T 612 9232 5877
F 612 9221 4139
www.ptw.com.au

PTW

Contractor

Consultants

Planner -
Structural -
Services -
Landscape -
Acoustics -
Traffic -

MERITON THOMAS STREET
Thomas Street/ Albert Avenue
Chatswood NSW 2067

Project No. 212007
Scale: 1:200@A1;1:400@A3
Date: APRIL 2013
Drawn: DH
Checked: EA
Approved:

LEVELS 36 PLAN

A0052 2
FOR APPROVAL