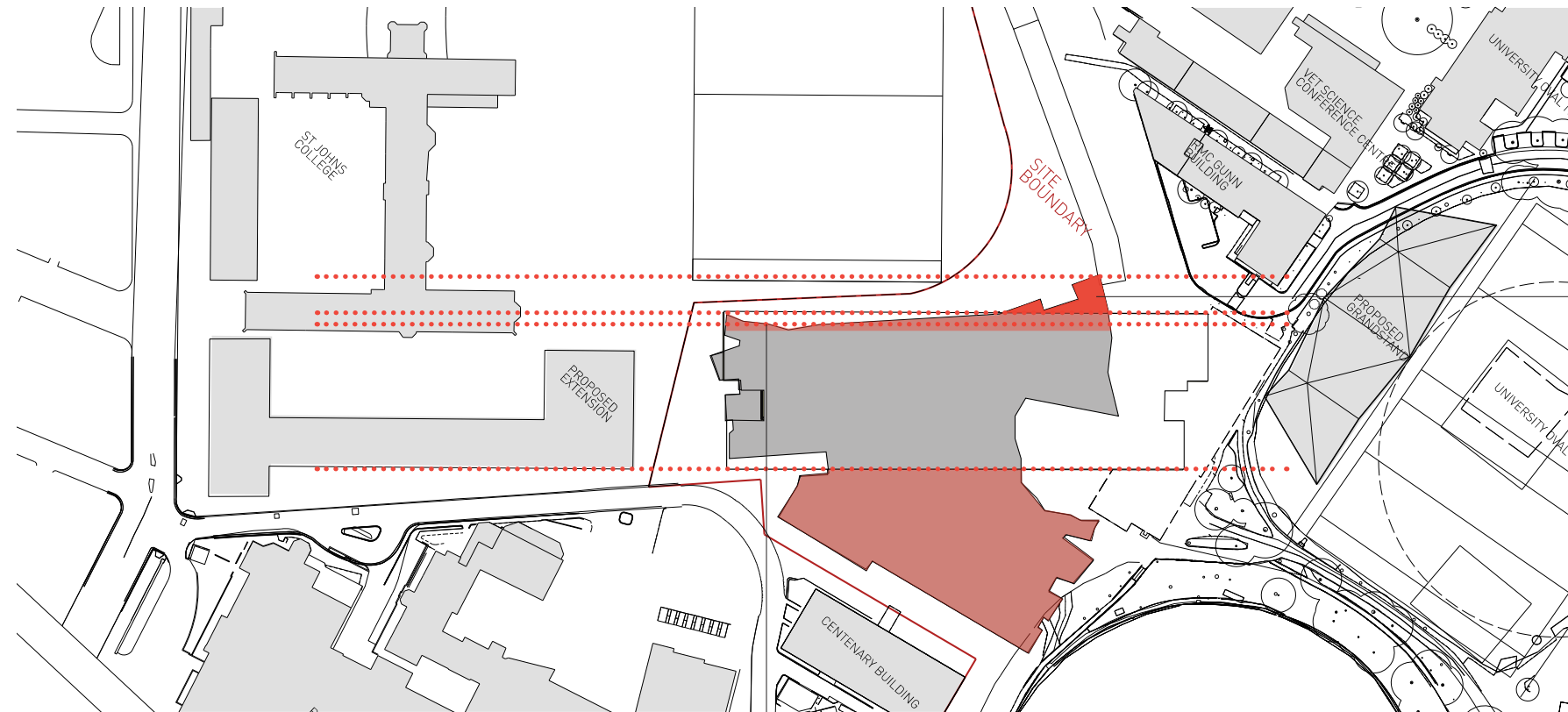


Building Alignments



Submitted scheme setback from
Mod 1 scheme by 11.8m

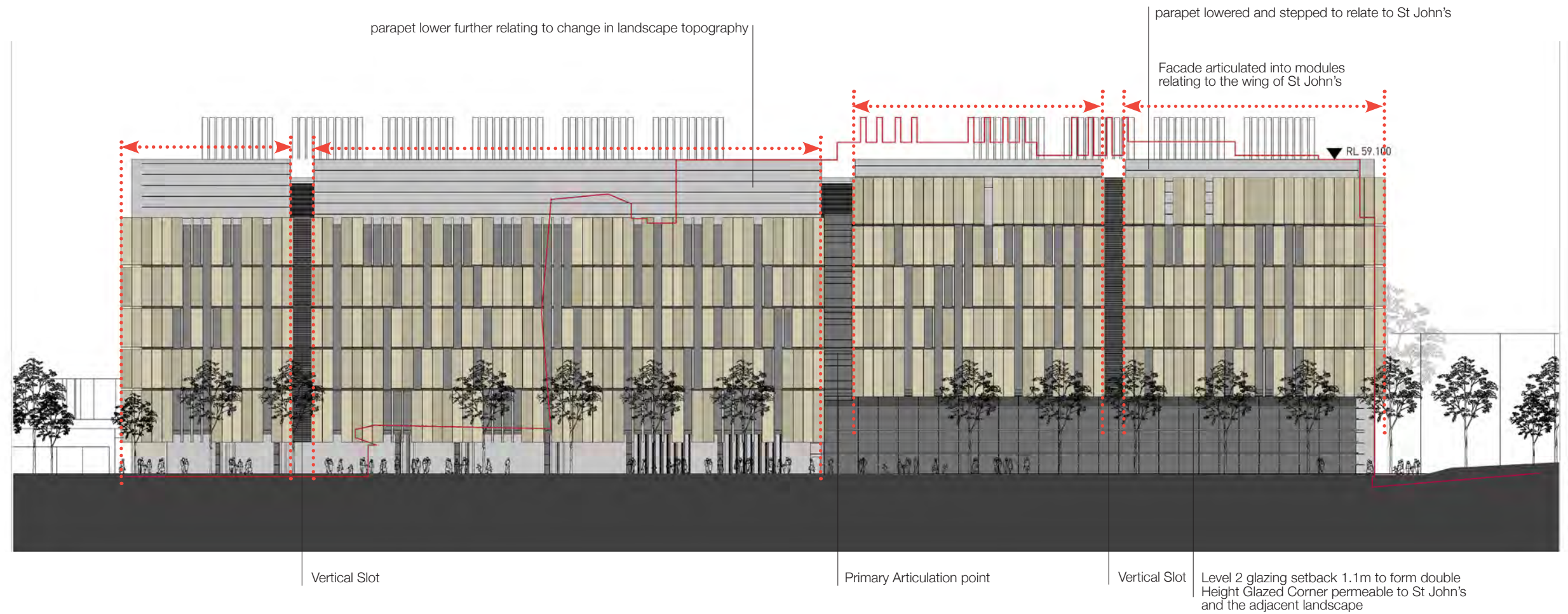
submitted scheme - glazing on Level 1 further setback by 1.1m

amended scheme - Level 2 West setback by 1.1m from submitted scheme to align with Level 1

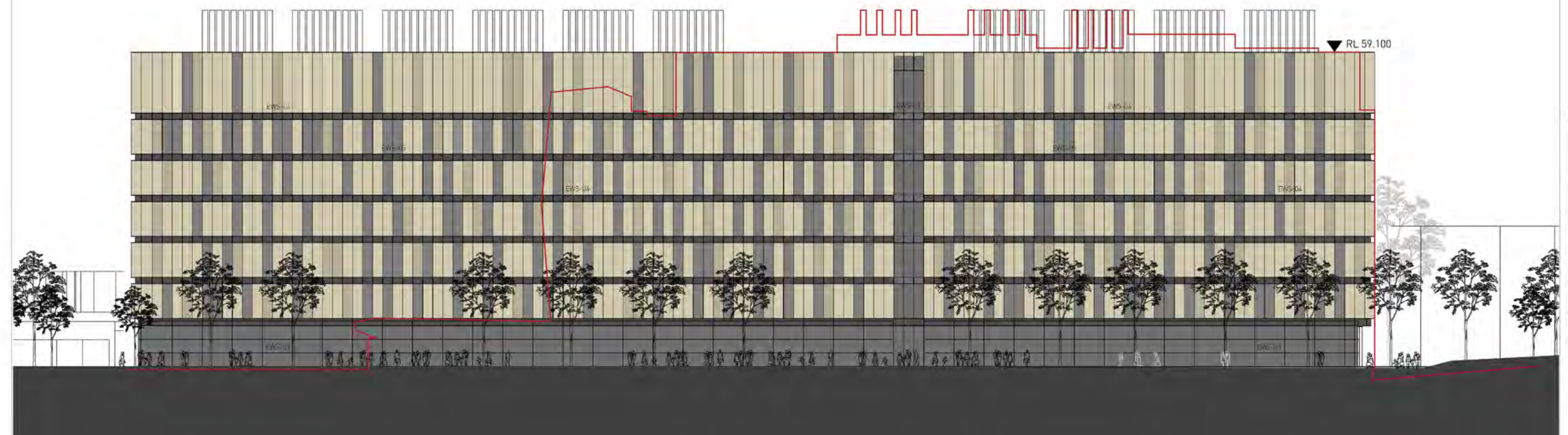
Sight lines to St Johns and the landscape setting



Design refinements and adjustments to north-western facade



Proposed North West Elevation



Existing North West Elevation

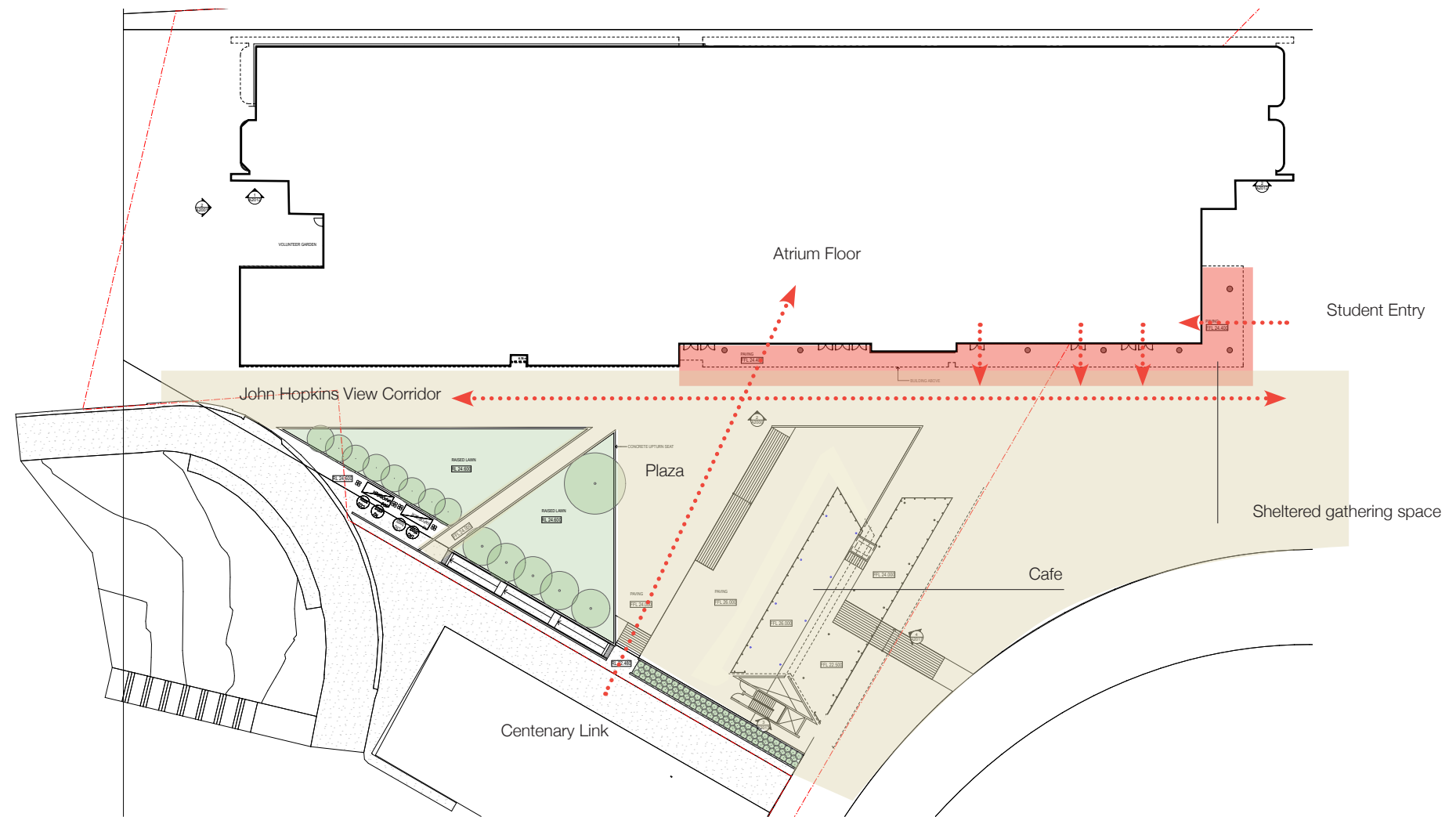


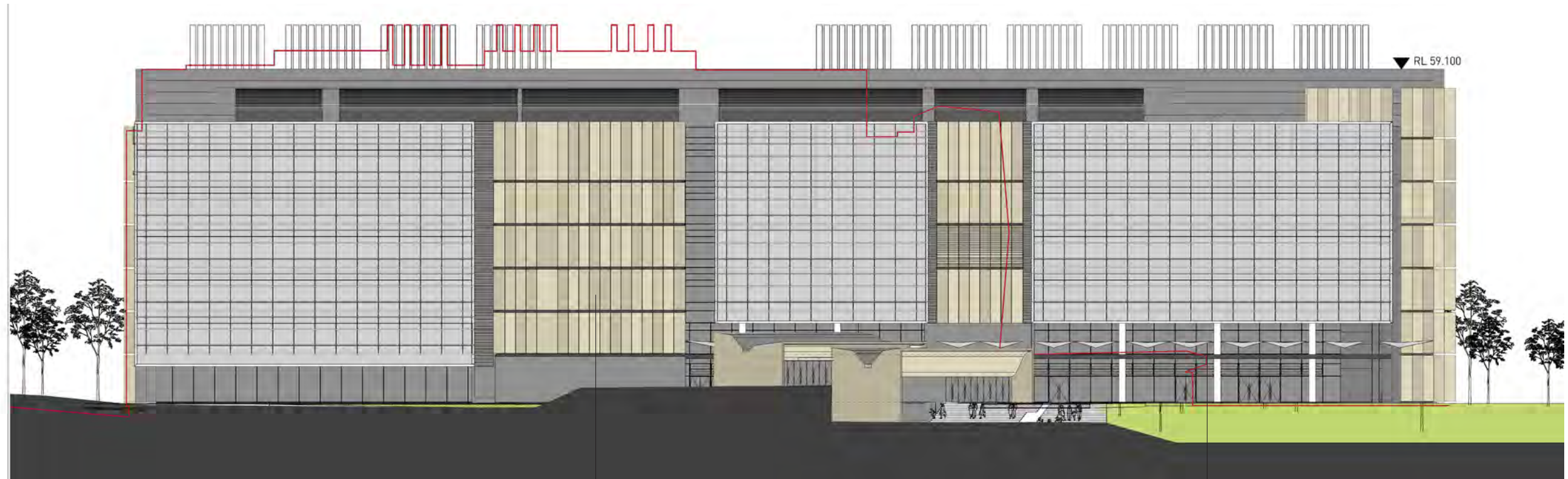
Existing Perspective from North



Proposed Perspective from North

Groundplane

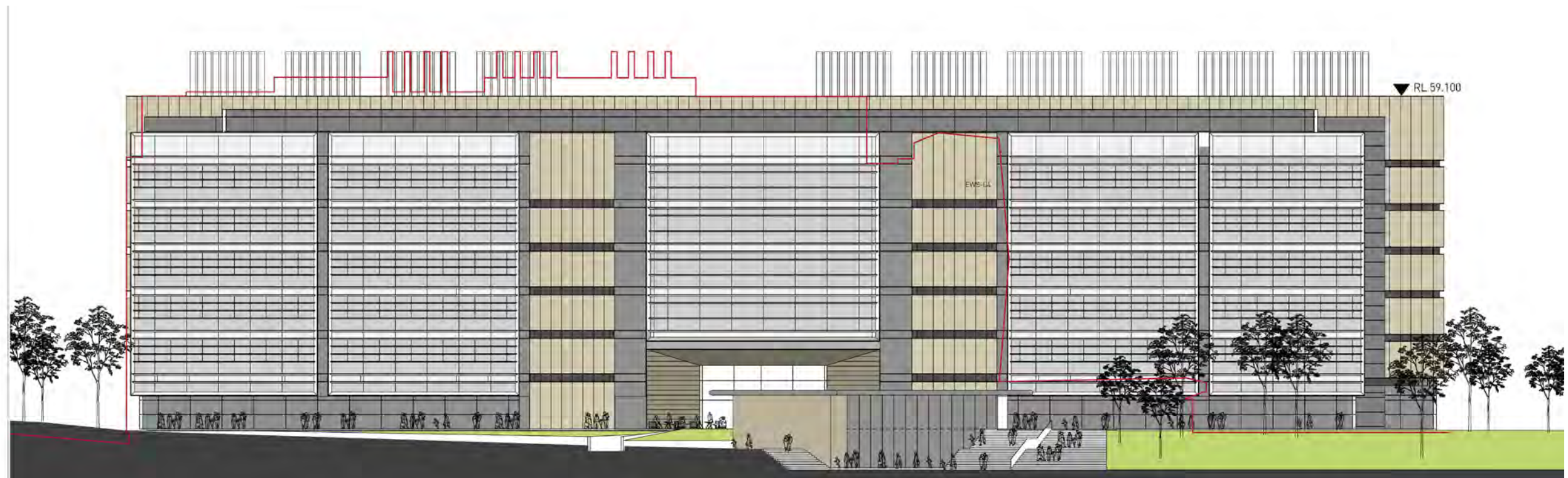




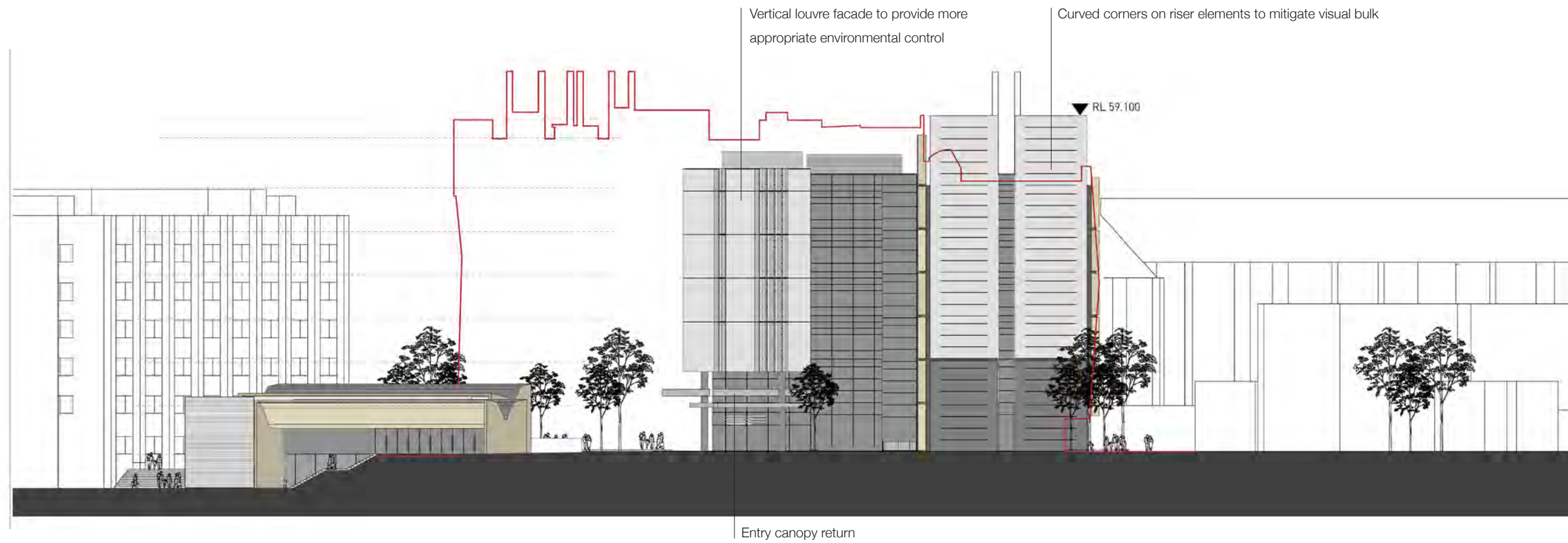
Proposed South Elevation

Provision of an increased west core sandstone element to achieve an asymmetric yet harmonious composition and also in response to internal functional planning.

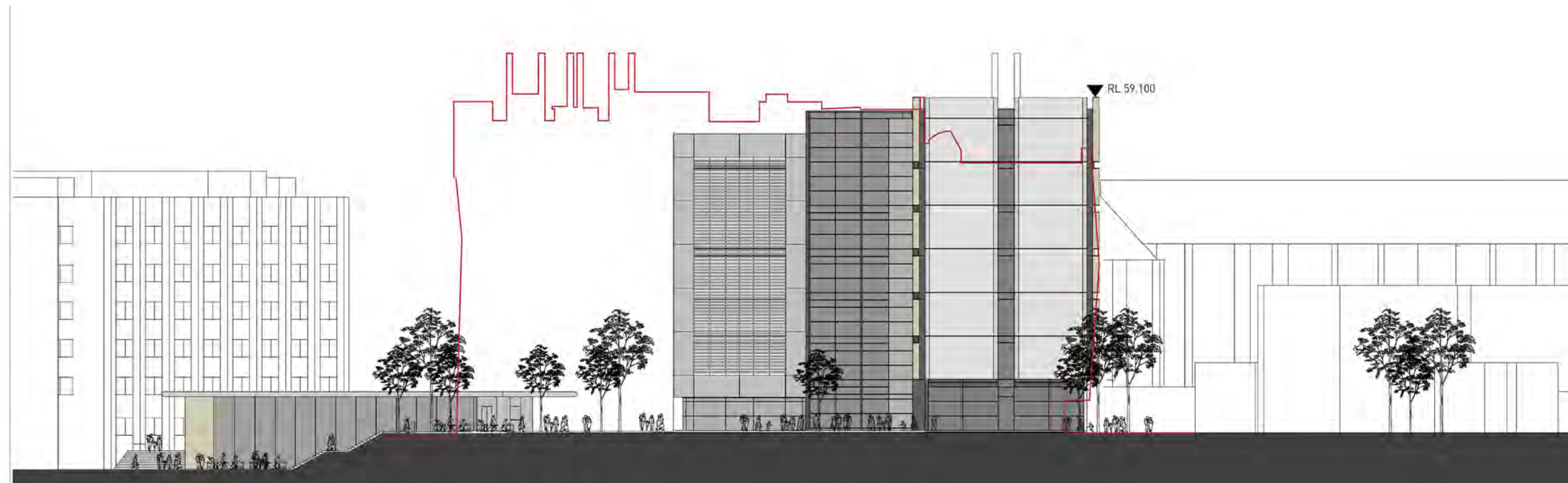
Double height canopy to acknowledge entry and provide shelter from inclement weather



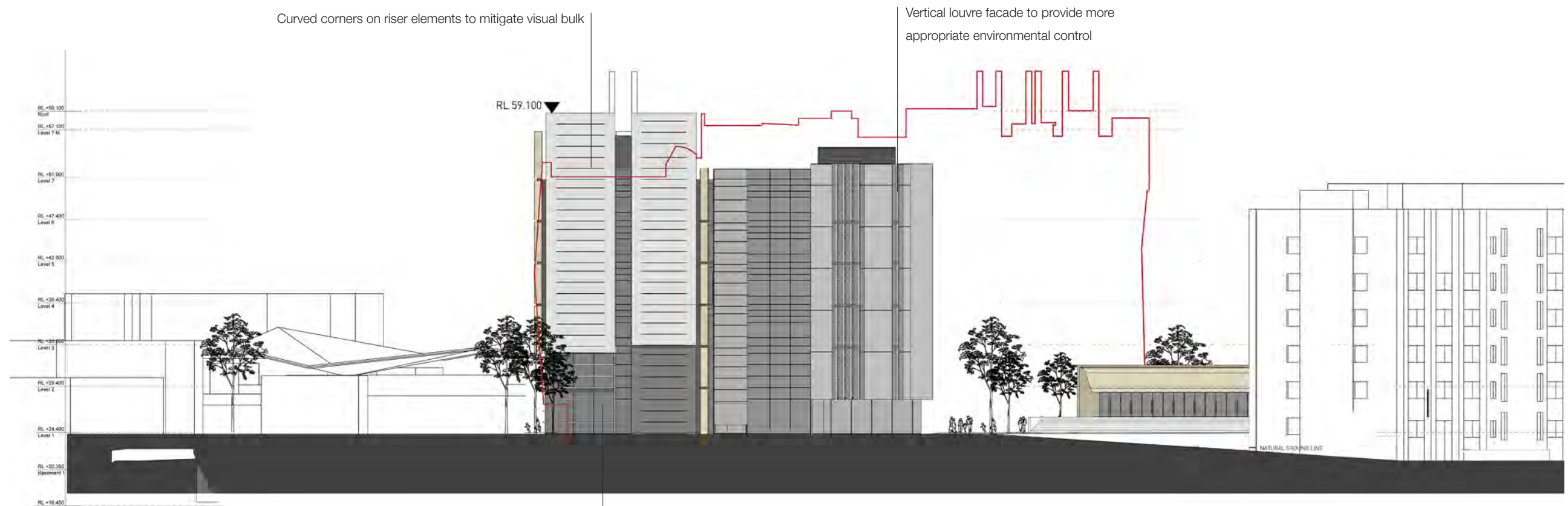
Existing South Elevation



Proposed East Elevation

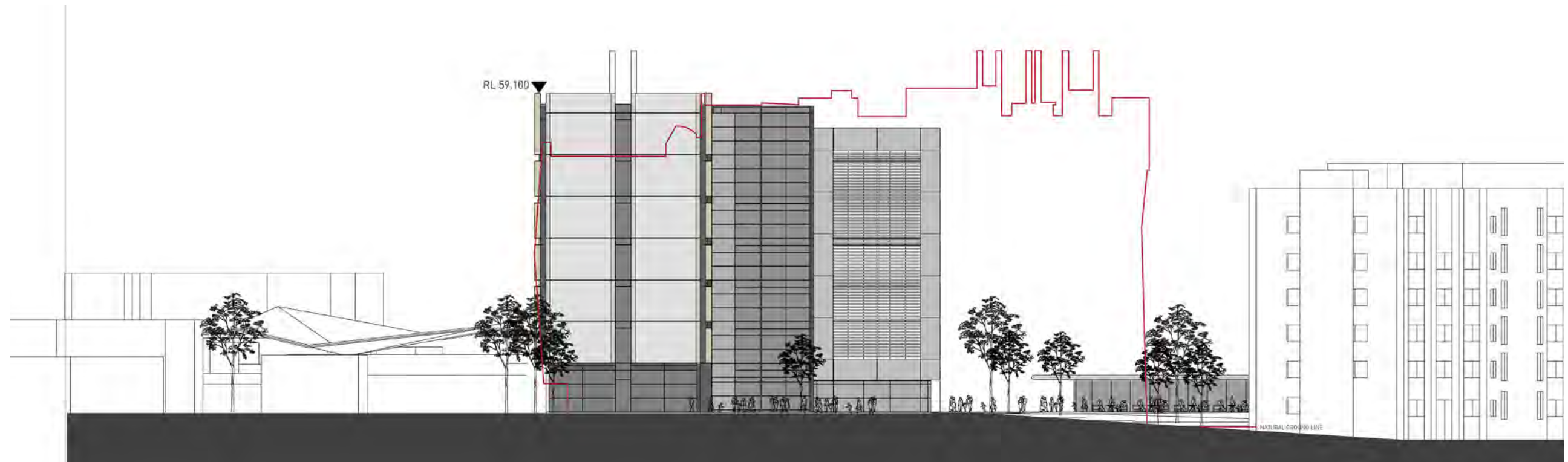


Existing East Elevation



Proposed West Elevation

Glazed return to provide permeability to St John's



Existing West Elevation